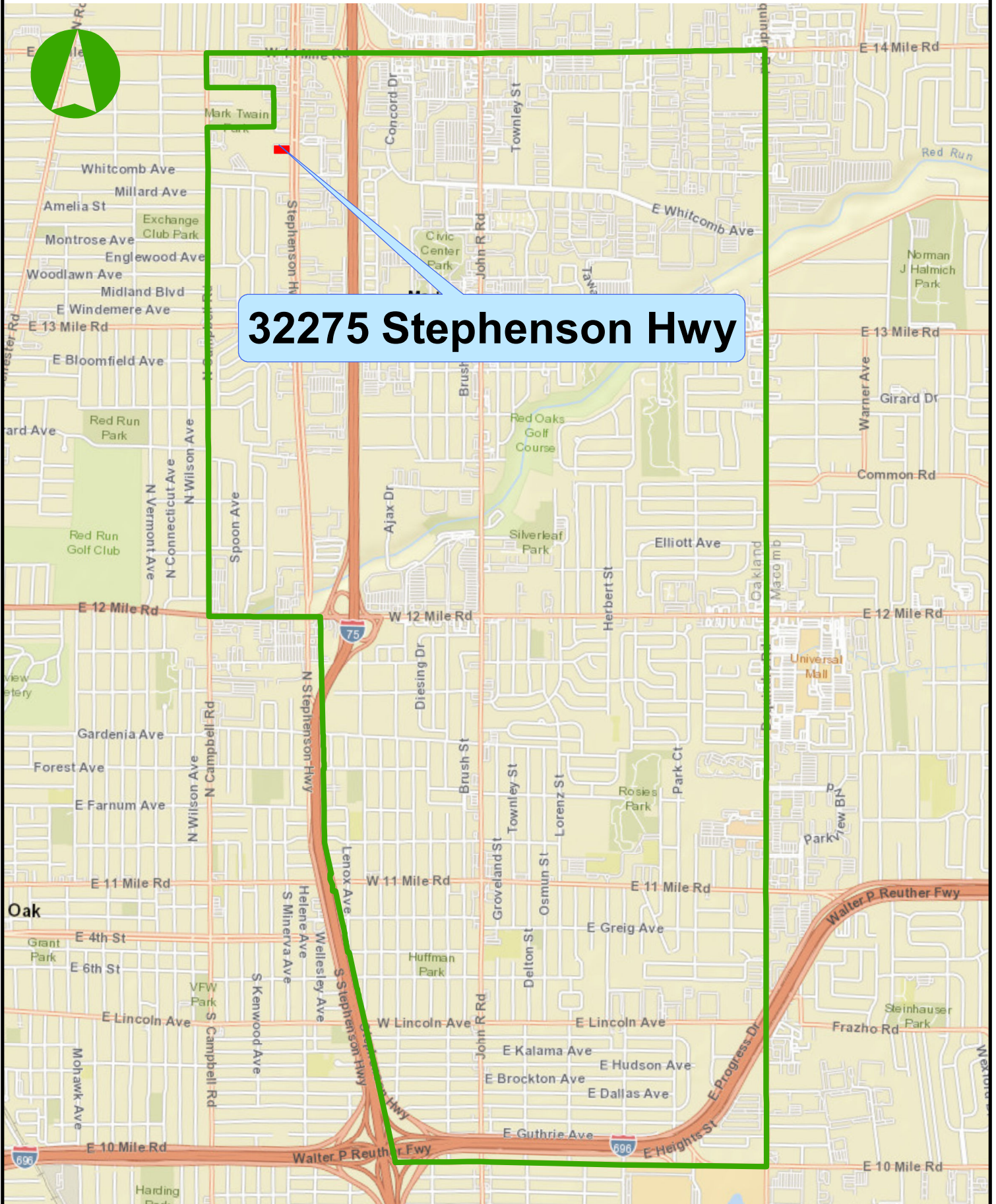


# PZBA Case 25-04: 32275 Stephenson Hwy

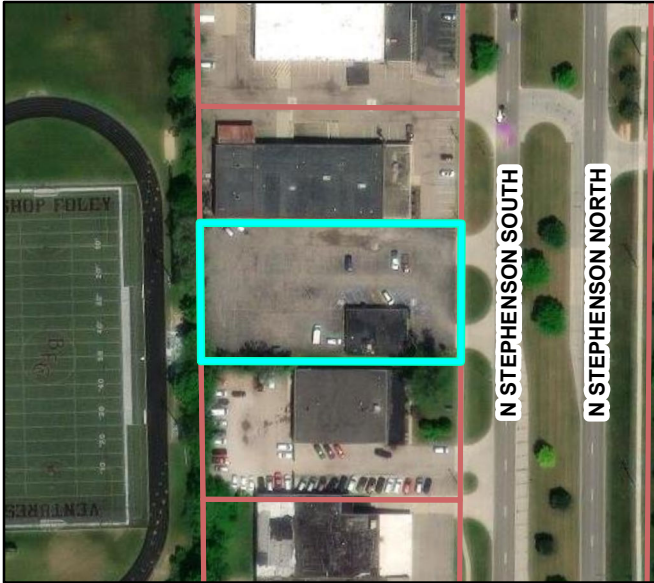


# Site Address: 32275 Stephenson Hwy



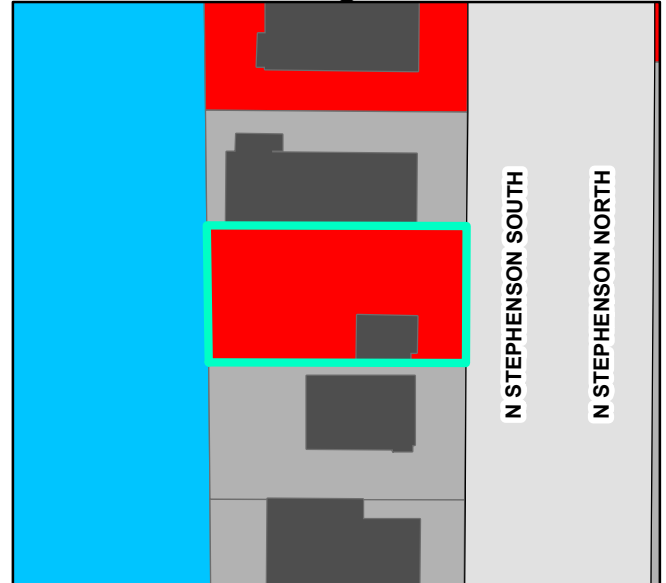
[Click for maps](#)

Aerial



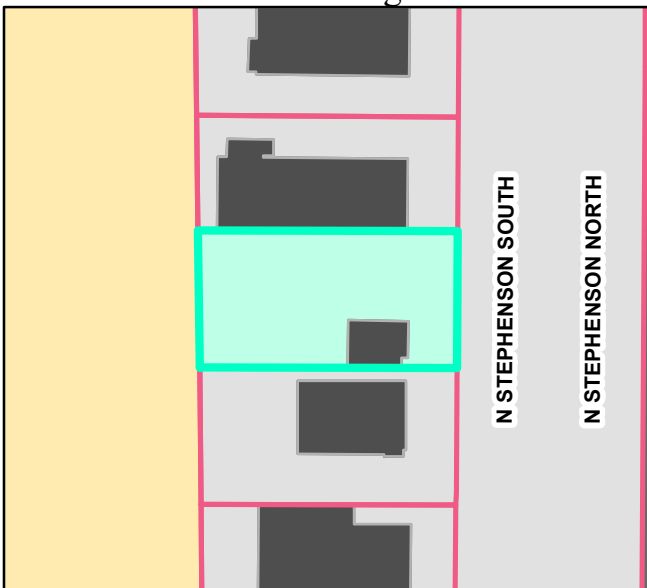
32275 Stephenson Hwy Parcels

Existing Land Use



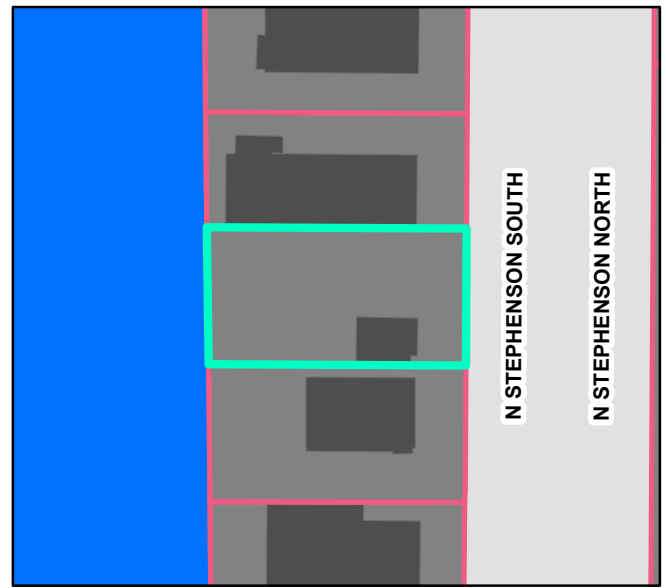
32275 Stephenson Hwy Commercial  
 Buildings Industrial  
 Quasi-public

Zoning



32275 Stephenson Hwy MUI  
 Parcels R-2  
 M-1

Future Land Use



32275 Stephenson Hwy Industrial  
 Public and Schools Parcels

# PZBA Case 25-04: 32275 Stephenson Hwy Buffer 300 Ft

