



Good for cars. Great for your city.

Why Tommy's Express?

We have owned and operated some of the busiest car washes in the world. That, topped with our 50 years of operations experience, and our proven and tested process and site models makes Tommy's Express the clean choice for car wash franchising.







50
YEARS

INNOVATION
INSPIRED BY
OPERATION

It all started with a few washes in West Michigan

Quality Car Wash opens its Easttown location on Holland's main street. For decades, this location would hold the record for washing **2,500 cars per day** for two consecutive days.

Jun and Tom Essenburg build and open a 180' Gas C-Store Car Wash. The site was the first to incorporate the **Integrated Flight Deck System**, which still grounds Tommy Car Wash Designs. At peak performance the site can wash up to 205 cars per hour.

Tom Essenburg launches the Tommy Car Wash Systems equipment line as a new **signature series equipment** package for operators. The launch is highlighted in the grand opening of Tommy's Express, a full service wash converted to an Express car wash in Grand Rapids, Michigan, as well as a brand new Quality Car Wash Gas C-Store Carwash model with a barrel vault, clear acrylic roof located in Muskegon, Michigan.

Tommy Car Wash Systems reaches a milestone, installing the **100th Tommy Equipment package**.

'69

'80

'91

'02

'07

'01

'90

'71

Jun and Sonny Essenburg launch the first Quality Car Wash with a **dual rollover system** located on 17th street in Holland, Michigan. After just a few years and great success they convert the wash into an automated 60' tunnel.

Quality Car Wash builds several new locations in Holland, Michigan. Quality also purchases several existing locations and renovates them for **improved services** and processing.

Tommy Car Wash Systems **partners with AVW** Equipment and launches a national distributorship network, helping to bring cutting-edge AVW products to leading car washes in the United States and abroad.

Tommy Car Wash Systems and AVW Equipment develop and install the **first ever wet tunnel belt conveyor** (the Tommy Transporter™) at Quality Car Wash's Easttown location.

50
YEARS

INNOVATION
INSPIRED BY
OPERATION

It all started with a few washes in West Michigan

Tommy Car Wash Systems completes the first freestanding **Totally Tommy** Express site design in Tulsa Oklahoma.

Quality Car Wash opens their 6th location, a Totally Tommy Gas Wash C-Store in Holland, MI. The 'Waverly Site' goes on to achieve record breaking success, processing **419,000 total vehicles in its first year** of operation.

Wash Club, an **advanced licensed plate reader system** designed to support car wash club membership programs, is introduced to the car wash market. Tommy's Express Car Wash opens franchise partner site in Overland Park, KS.

Corporate owned Quality Car Wash sets world record by washing **3,255 cars in one day**. The Tommy's Express franchise opens 4 more locations in first quarter. (Las Vegas, NV / Manhattan, KS / Richmond, VA / Jonesboro, AR)

08

13

16

18

11

14

17

19

Tommy Car Wash Systems goes global, establishing relationships with **seven European distributors** and taking the continent by storm with a full size equipment demo at Automechanika in Frankfurt, Germany.

The Totally Tommy site design is updated and revised with new features plus **updated technology and architecture**. Orders are placed and independent Totally Tommy washes begin operation around the United States.

The **Tommy's Express Car Wash franchise** is inaugurated as a sister car wash company supported by Tommy Car Wash Systems. Tommy's Express car washes feature the Totally Tommy building design and a complete Tommy Car Wash Systems equipment package.

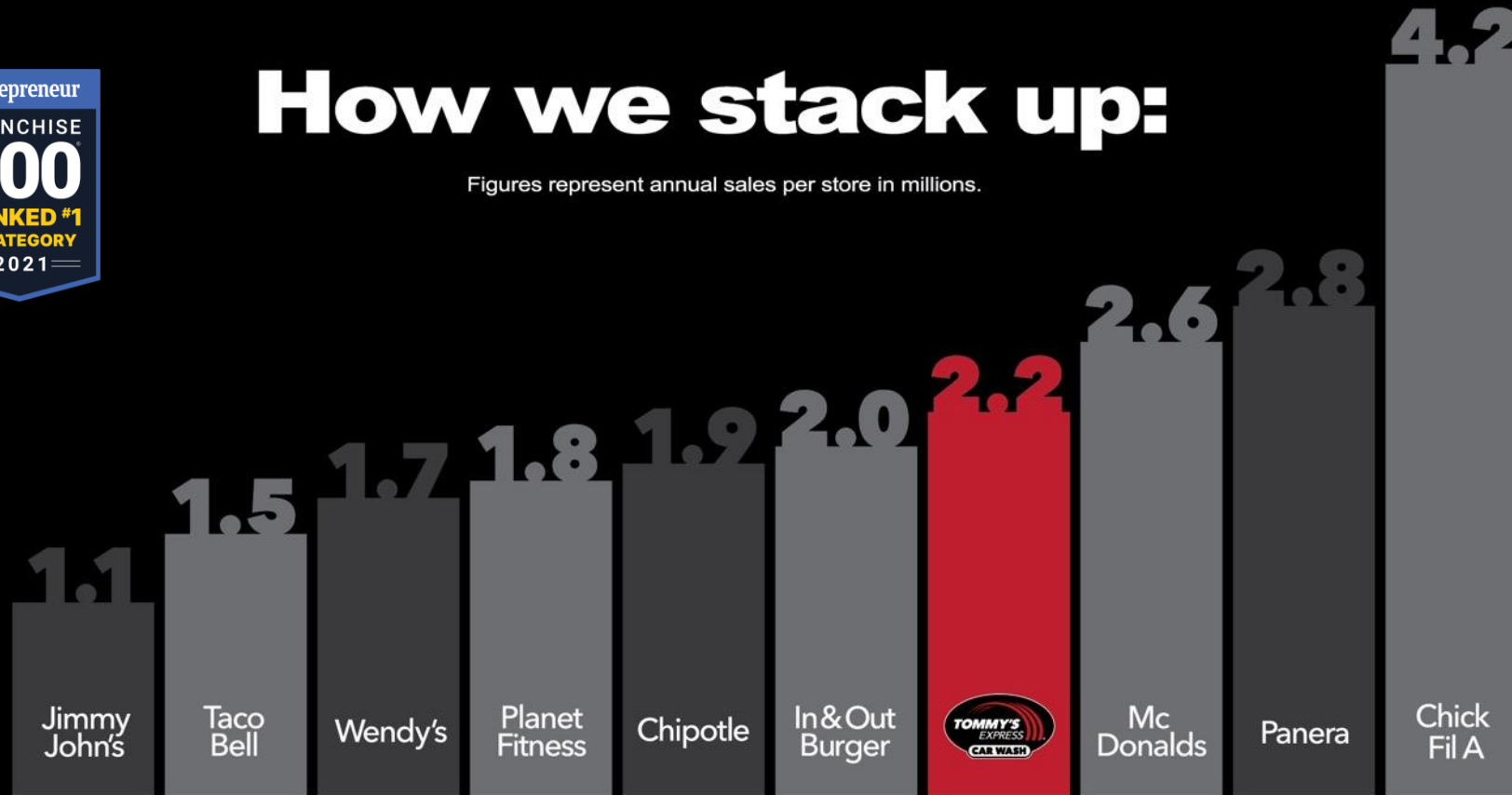
The Tommy's Express Car Wash franchise opens **6 locations across the USA**. (Joplin, MO / San Antonio, TX / Jenison, MI / Menifee, CA / Omaha, NE / Sarasota, FL)

We are one of the fastest growing businesses with the most **proven** and **complete** opportunity in one of the **fastest** growing franchise industries.



How we stack up:

Figures represent annual sales per store in millions.



The next big story in franchising.



Over 95 sites open and 200+ more in development

Tommy's Express

BENEFITS

Environmentally Friendly

- Every location employs an advanced water reclaim system which not only uses up to 60% less fresh water than washing at home, it also keeps 100% of used water out of the storm system.
- Every Tommy's Express uses an average of 28 gallons of fresh water per car, where a typical home wash uses 100 gallons in 10min.
- We use advanced lighting controls and all LED lights to ensure every location can monitor and manage their everyday power usage.
- Our clear acrylic roof system allows for daylight harvesting so no lighting is required during most operational hours.



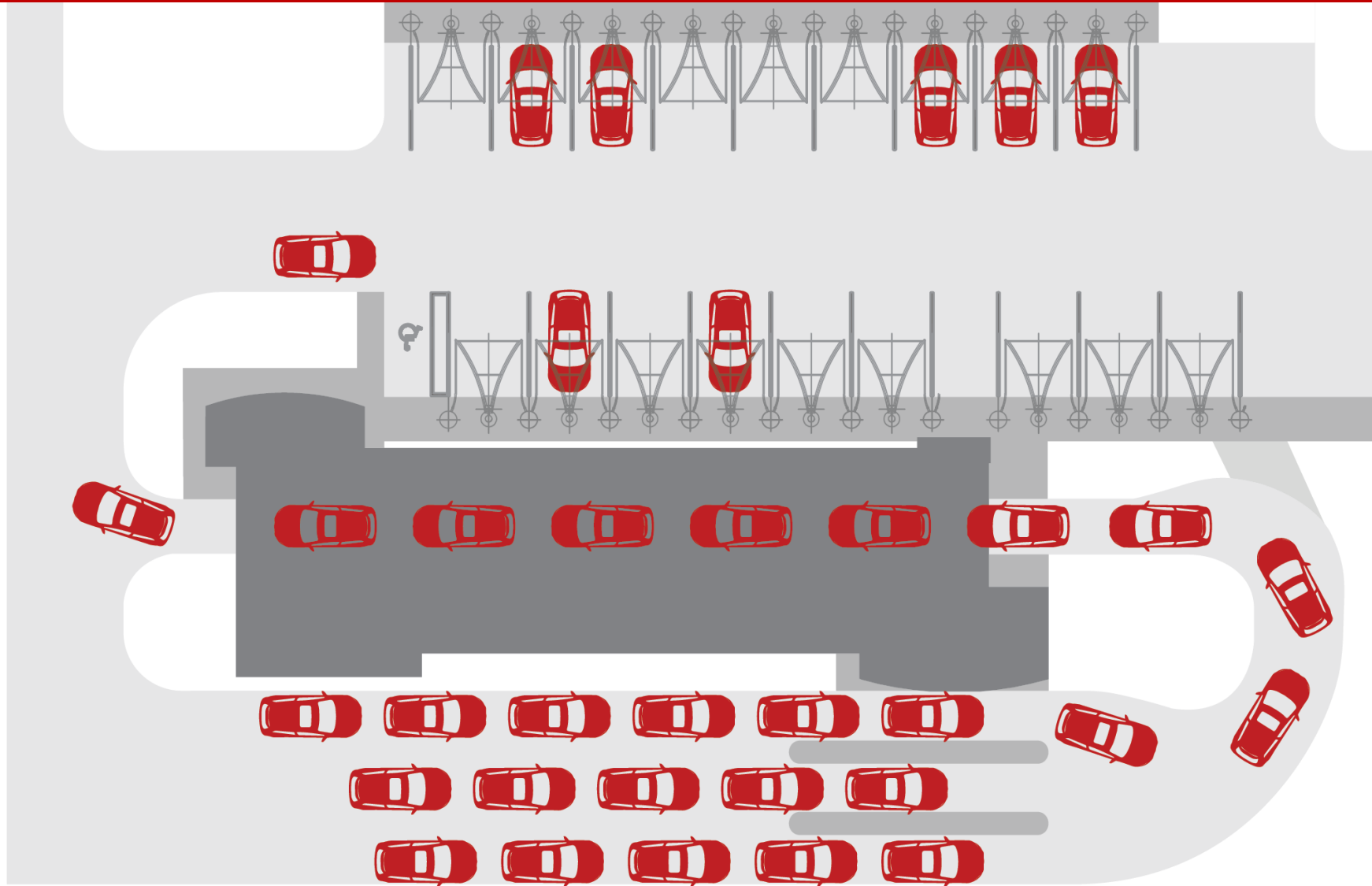
Tommy's Express

BENEFITS

Efficient Processing

With a combination of our unique, high-capacity design and proven efficient site layout, Tommy's Express locations can process more than 200 vehicles per hour, keeping lines short and customers happy.

Stacking Model



Tommy's Express

BENEFITS

World Class Facilities and Operations

- The iconic Tommy's Express architecture is aesthetically appealing and an instantly identifiable landmark in cities across the country
- Every site is required to maintain our high standards of professionalism. Extensive training and regular auditing provides cities with a clean, professionally-run retail destination and a valuable community partner.



Tommy's Express

BENEFITS



Community Focused

Every Tommy's Express location is part of a national franchise brand and is locally owned and operated, providing high national standards and a valuable community partner. Tommy's Express owners are encouraged to partner with local organizations for the benefit of the community.

Other Videos

Car Wash Karaoke:

<https://www.youtube.com/watch?v=XACXNymBK3M>

Water Mission:

<https://www.youtube.com/watch?v=ZyEHpkMMI94>

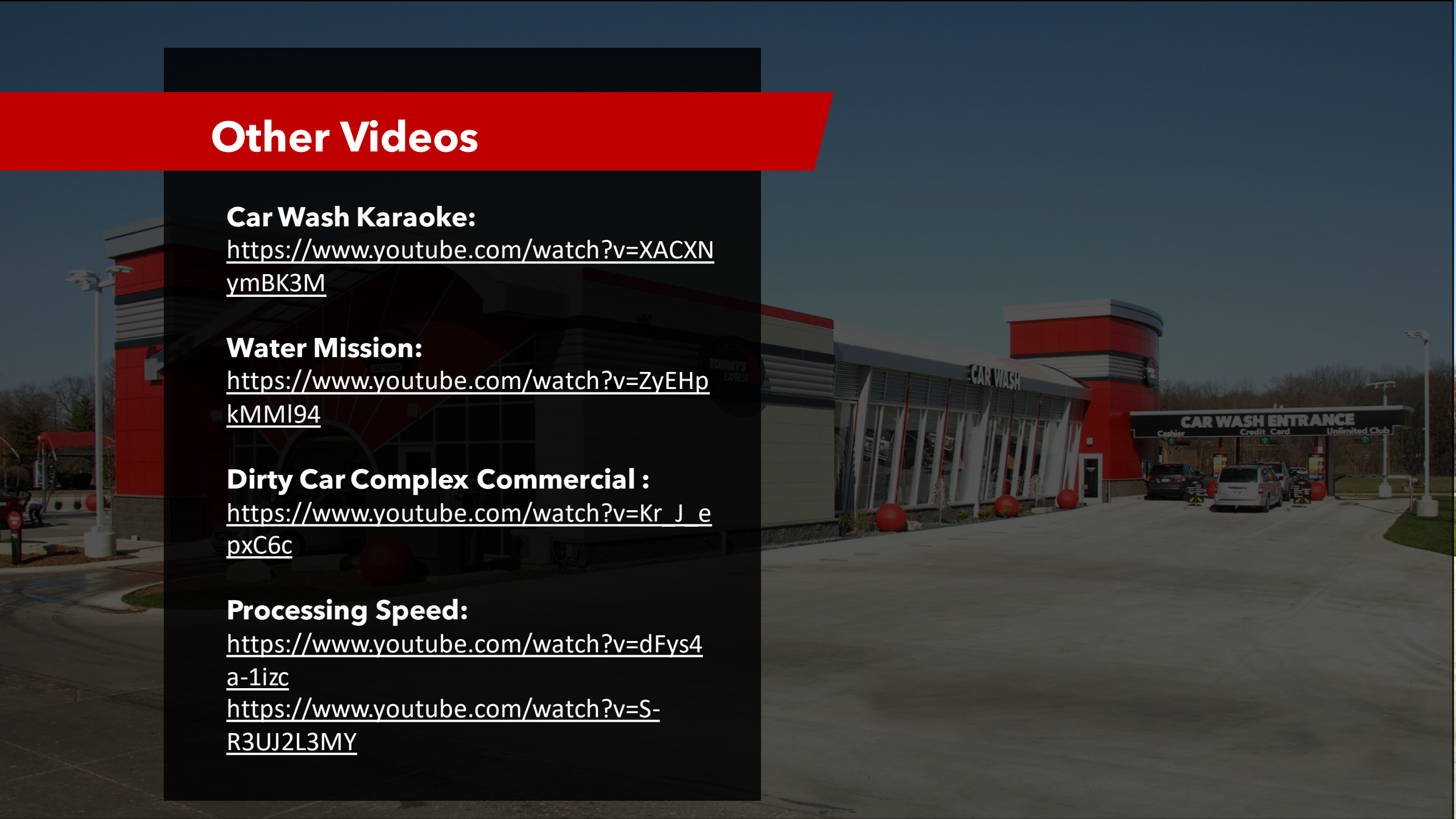
Dirty Car Complex Commercial :

https://www.youtube.com/watch?v=Kr_J_epxC6c

Processing Speed:

<https://www.youtube.com/watch?v=dFys4a-1izc>

<https://www.youtube.com/watch?v=S-R3UJ2L3MY>





T

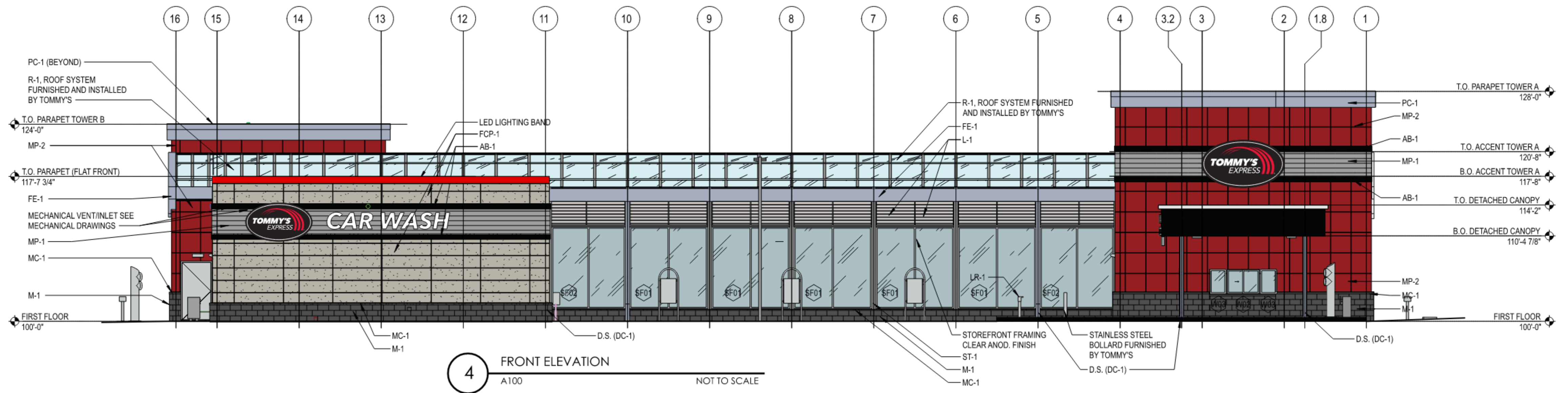
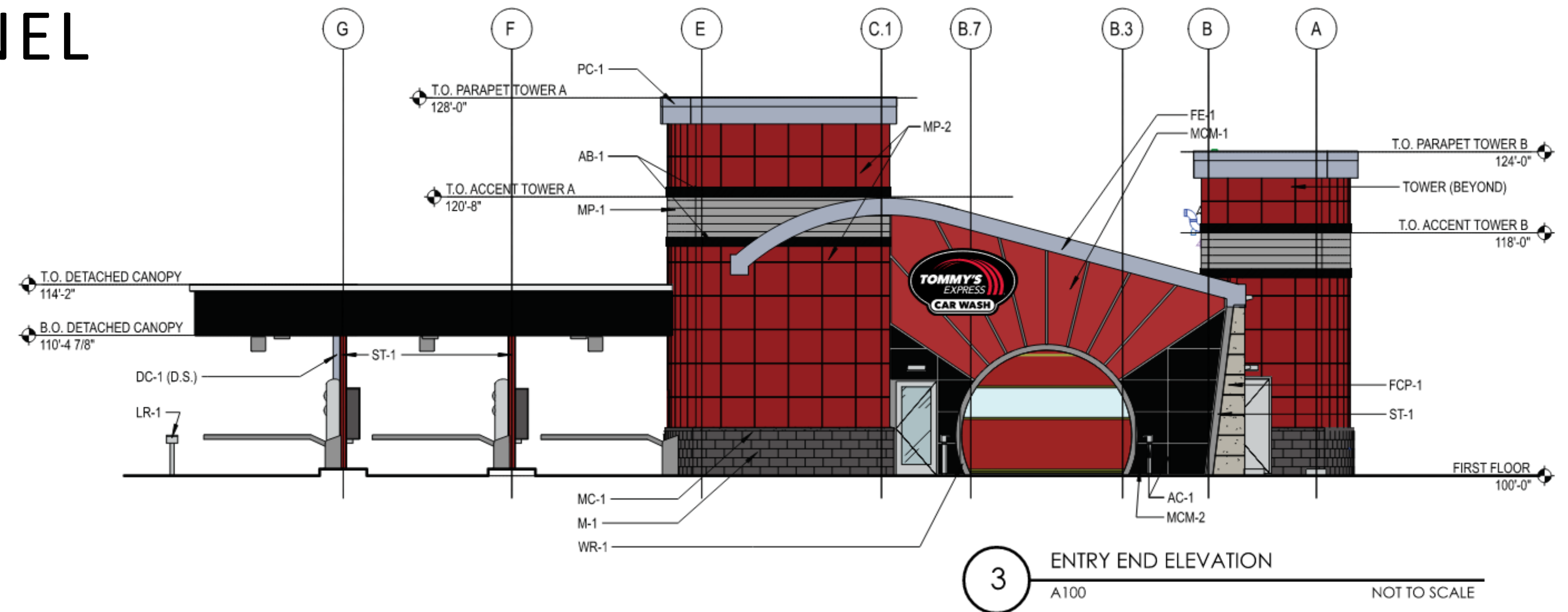
Tommy's Express Car Wash



EXTERIOR COLORS AND MATERIALS

M1 – RED METAL PANEL

[M1 Colors & Materials](#)
[M1 Exterior Elevations in Color](#)





M1 – RED METAL PANEL

Towers: 30" x 30" Prefinished Metal Panel – Cardinal Red

End Walls: Prefinished Aluminum Composite Panels – Brite Red & Ebony

Backroom: Fiber Cement Panel - Gray



T



M1 RED METAL PANEL

T



M1 RED METAL PANEL

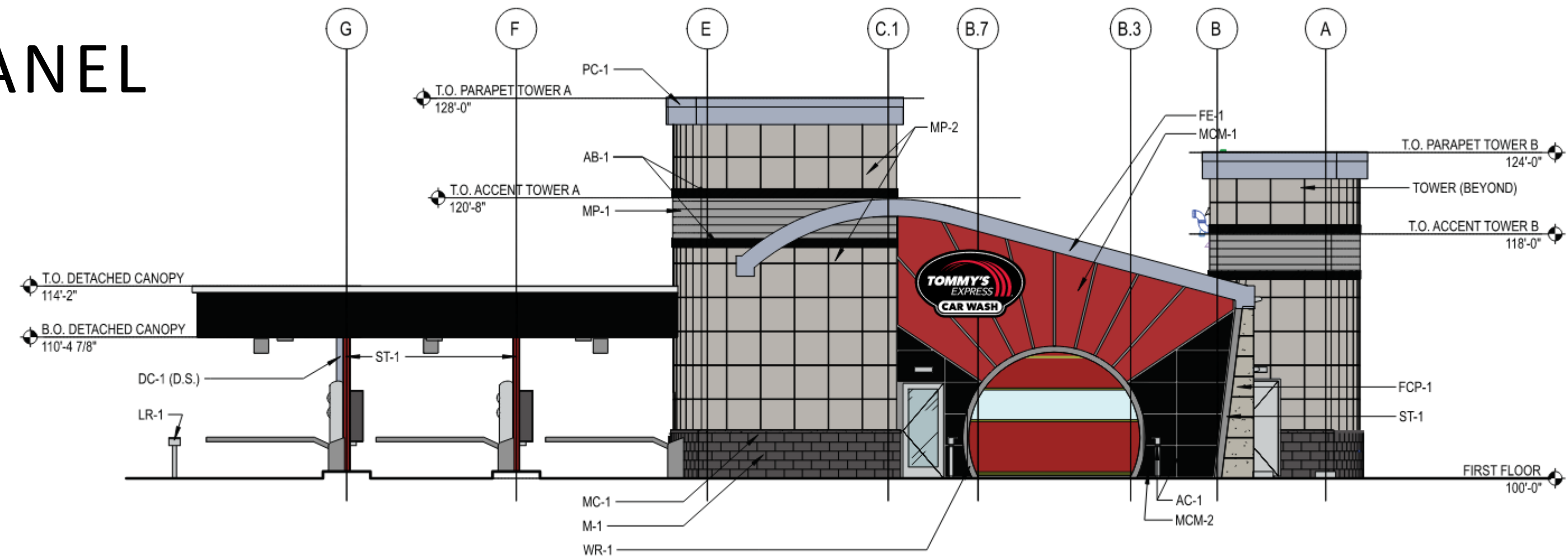
T



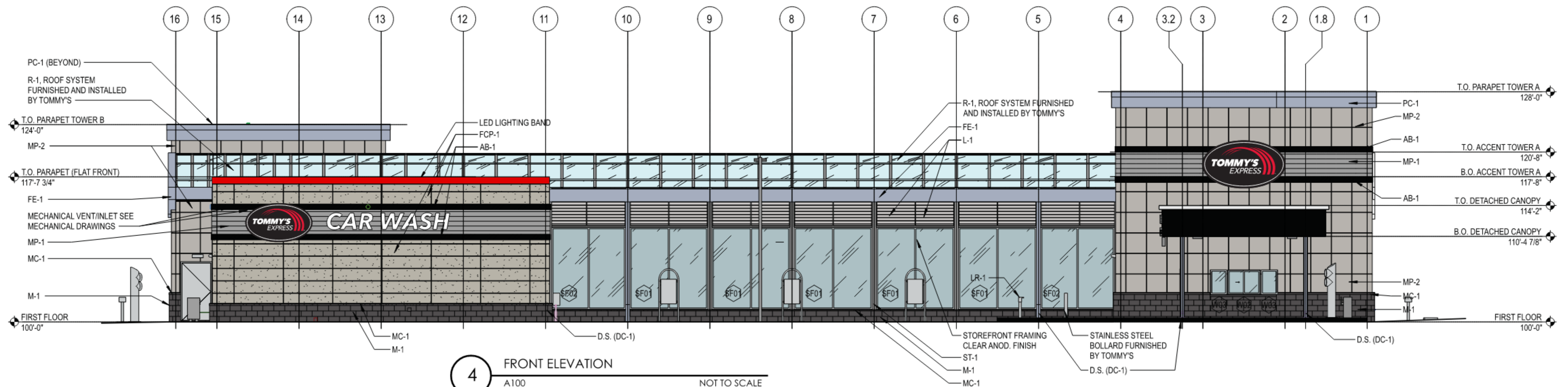
M1 RED METAL PANEL

M2 – GRAY METAL PANEL

[M2 Colors & Materials](#)
[M2 Exterior Elevations in Color](#)



3 ENTRY END ELEVATION
 A100 NOT TO SCALE



4 FRONT ELEVATION
 A100 NOT TO SCALE



M2 – GRAY METAL PANEL

Towers: 30" x 30" Prefinished Metal Panel – Fawn Brindle

End Walls: Prefinished Aluminum Composite Panels – Brite Red & Ebony

Backroom: Fiber Cement Panel - Gray



T

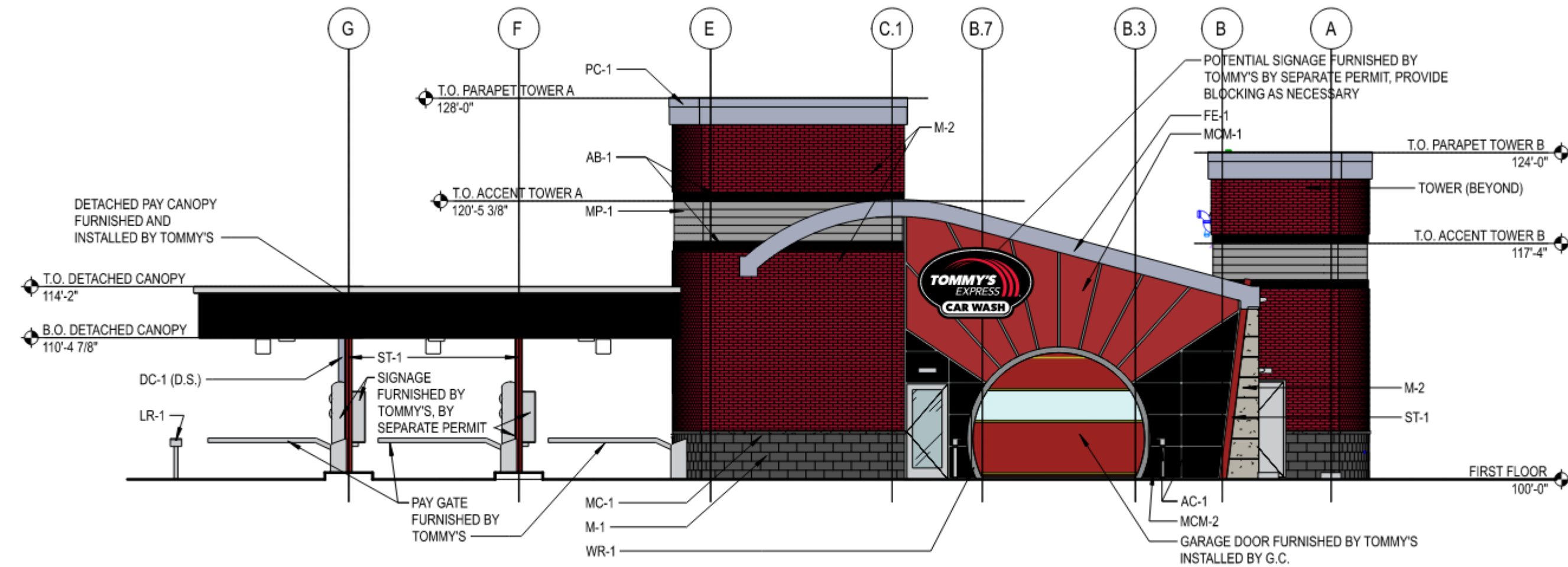


M2 GRAY METAL PANEL

B1 – RED BRICK

[B1 Colors & Materials](#)

[B1 Exterior Elevations in Color](#)

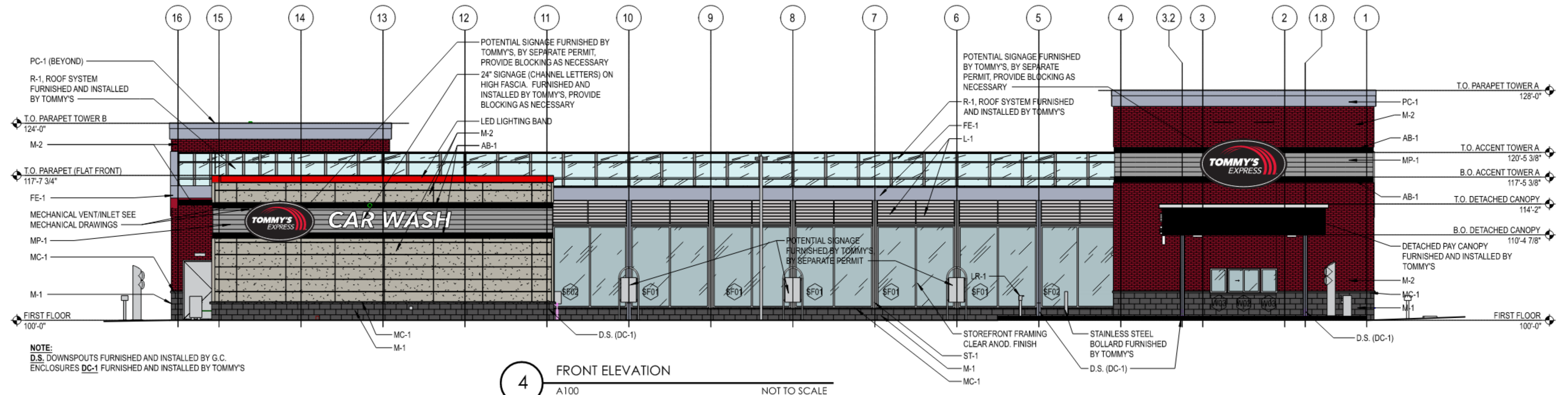


3

ENTRY END ELEVATION

A100

NOT TO SCALE

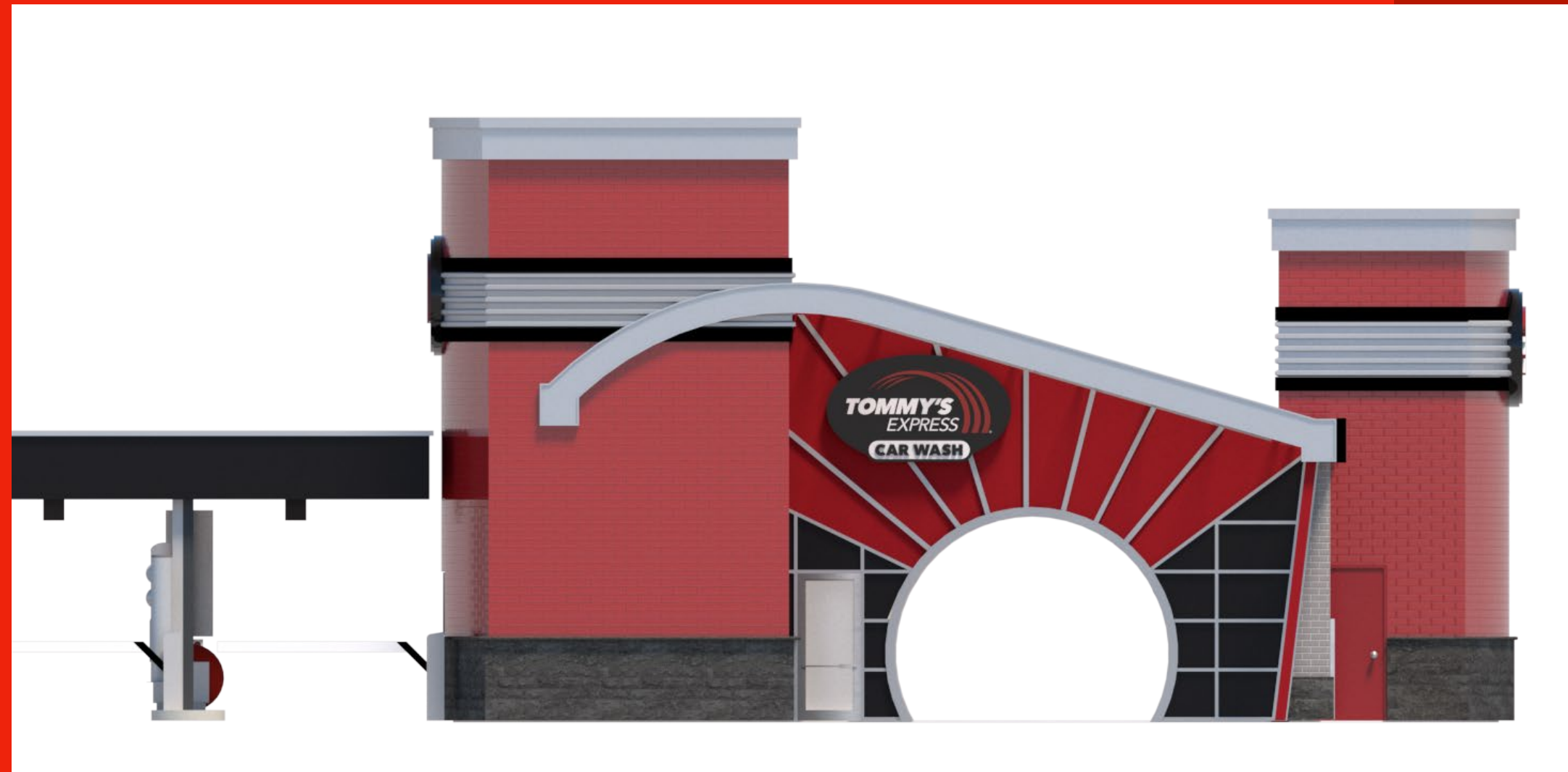


4

FRONT ELEVATION

A100

NOT TO SCALE



B1 – RED BRICK

Towers: Brick – Classic Red

End Walls: Prefinished Aluminum Composite Panels – Brite Red & Ebony

Backroom: Brick – Fiber Cement Panel - Gray



T



B1 RED BRICK

T

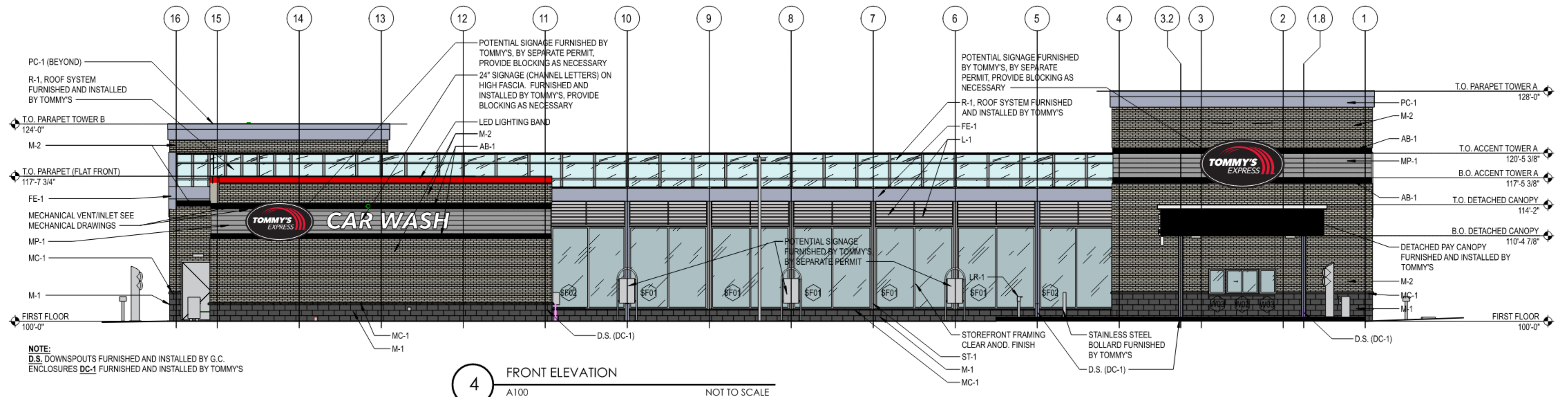
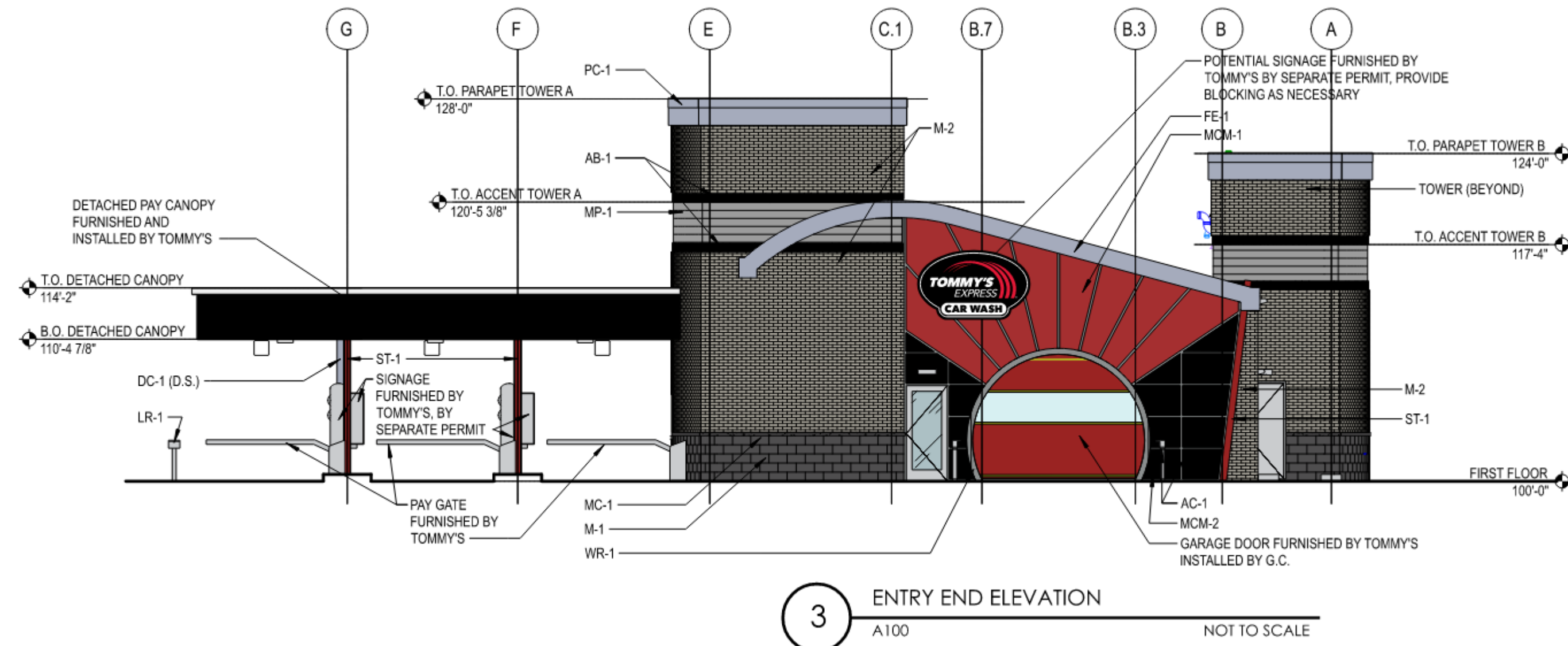


B1 RED BRICK

B2 – GRAY BRICK

[B2 Colors & Materials](#)

[B2 Exterior Elevations in Color](#)





B2 – GRAY BRICK

Towers: Brick – Stone Gray

End Walls: Prefinished Aluminum Composite Panels – Brite Red & Ebony

Backroom: Brick – Stone Gray



T



B2 GRAY BRICK

T



B2 GRAY BRICK



Good for cars. Great for your city.



Environmentally Friendly

- We use advanced lighting controls and all LED lights to ensure every location can monitor and manage their everyday power usage.
- Our clear acrylic roof system allows for daylight harvesting so no lighting is required during most operational hours.
- Every location employs an advanced water reclaim system which not only uses up to 60% less fresh water than washing at home, it also keeps 100% of used water out of the storm system.

Efficient Processing

- With a combination of our unique, high-capacity design and proven efficient site layout, Tommy's Express locations can process more than 200 vehicles per hour, keeping lines short and customers happy.

World Class Facility and Operations

- The iconic Tommy's Express architecture is aesthetically appealing and an instantly identifiable landmark in cities across the country
- Every site is required to maintain our high standards of professionalism. Extensive training and regular auditing provides cities with a clean, professionally-run retail destination and a valuable community partner.

Community Focused

- Every Tommy's Express location is part of a national franchise brand and is locally owned and operated, providing high national standards and a valuable community partner. Tommy's Express owners are encouraged to partner with local organizations for the benefit of the community.

for more info visit: www.tommys-express.com/franchise