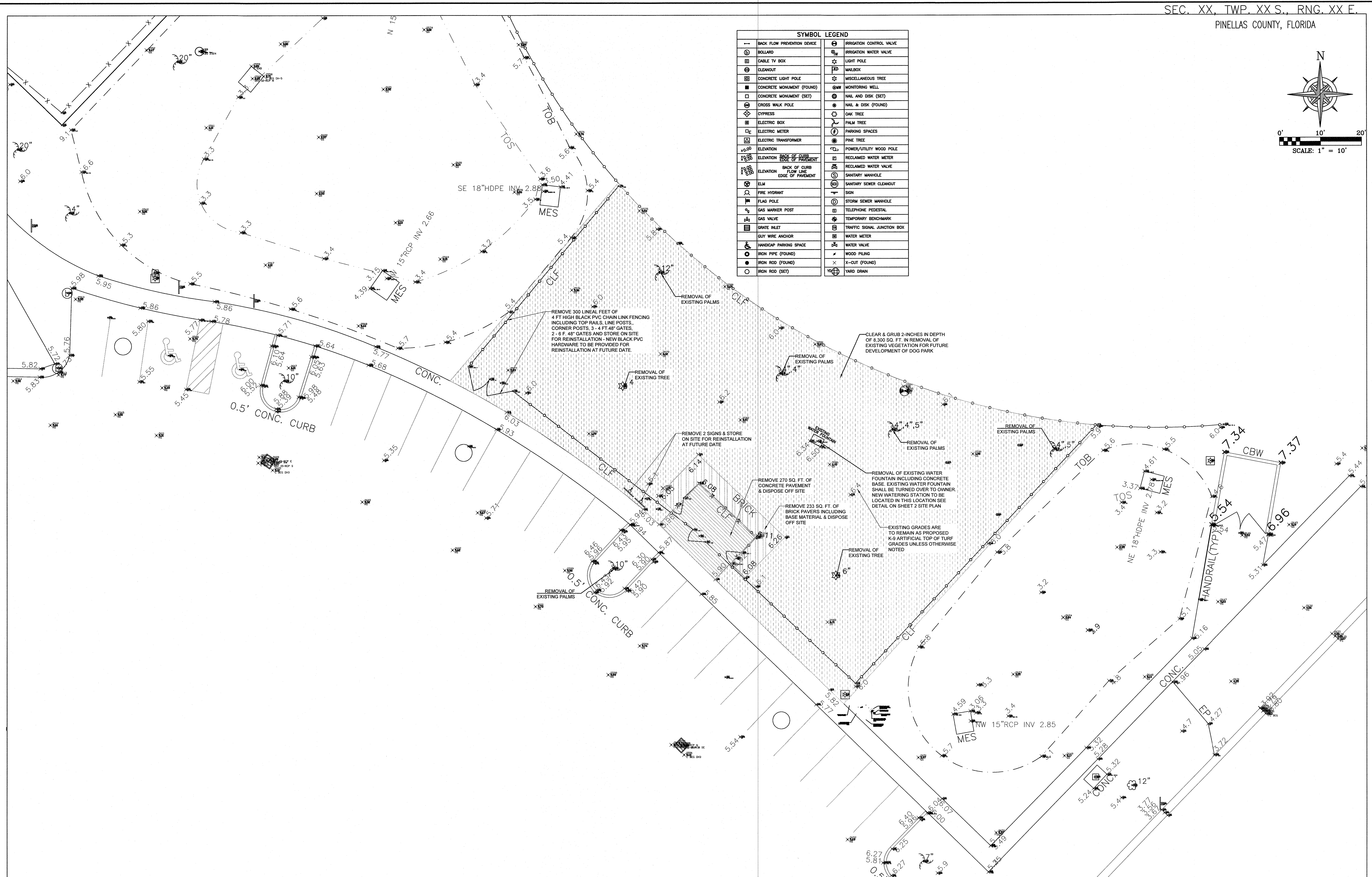


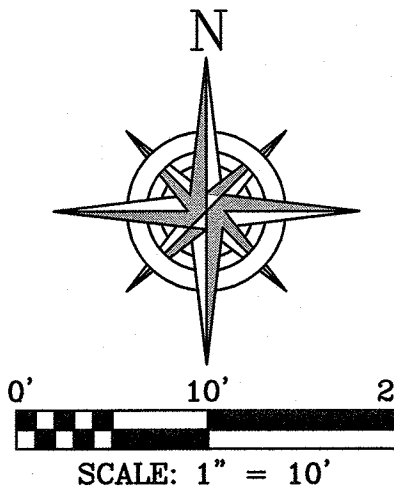
SYMBOL		LEGEND	
—	BACK FLOW PREVENTION DEVICE	⊗	IRRIGATION CONTROL VALVE
⊙	ROLLARD	⊗	IRRIGATION WATER VALVE
⊞	CABLE TV BOX	⊙	LIGHT POLE
⊕	CLEANOUT	✉	MAILBOX
⊙	CONCRETE LIGHT POLE	⊗	MISCELLANEOUS TREE
■	CONCRETE MONUMENT (FOUND)	⊗	MONITORING WELL
□	CONCRETE MONUMENT (SET)	⊙	NAIL AND DISK (SET)
⊕	CROSS WALK POLE	⊙	NAIL & DISK (FOUND)
⊕	CYPRESS	⊙	OAK TREE
⊞	ELECTRIC BOX	⊙	PALM TREE
⊞	ELECTRIC METER	⊙	PARKING SPACES
⊞	ELECTRIC TRANSFORMER	⊙	PINE TREE
x 60	ELEVATION	⊙	POWER/UTILITY WOOD POLE
x 60	ELEVATION BACK OF CURB EDGE OF PAVEMENT	⊞	RECLAIMED WATER METER
x 60	ELEVATION BACK OF CURB FLOW LINE EDGE OF PAVEMENT	⊞	RECLAIMED WATER VALVE
⊙	ELM	⊙	SANITARY MANHOLE
⊙	FIRE HYDRANT	⊙	SANITARY SEWER CLEANOUT
⊙	FLAG POLE	—	SIGN
⊙	GAS MARKER POST	⊙	STORM SEWER MANHOLE
⊙	GAS VALVE	⊙	TELEPHONE PEDESTAL
⊙	GRATE INLET	⊙	TEMPORARY BENCHMARK
⊙	GUY WIRE ANCHOR	⊙	TRAFFIC SIGNAL JUNCTION BOX
⊙	HANDICAP PARKING SPACE	⊙	WATER METER
⊙	IRON PIPE (FOUND)	⊙	WATER VALVE
⊙	IRON PIPE (SET)	⊙	WOOD PILING
⊙	IRON ROD (FOUND)	⊙	X—OUT (FOUND)
⊙	IRON ROD (SET)	⊙	YARD DRAIN



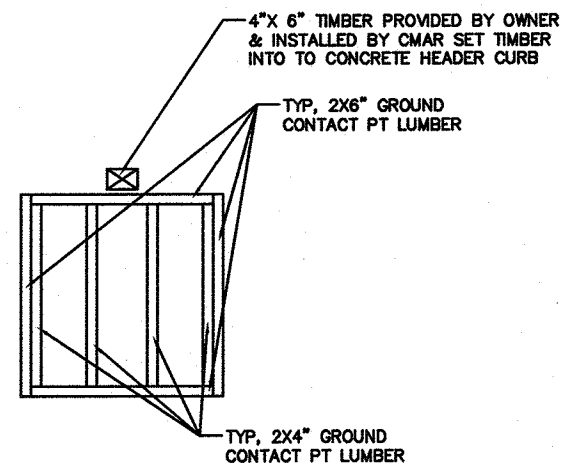
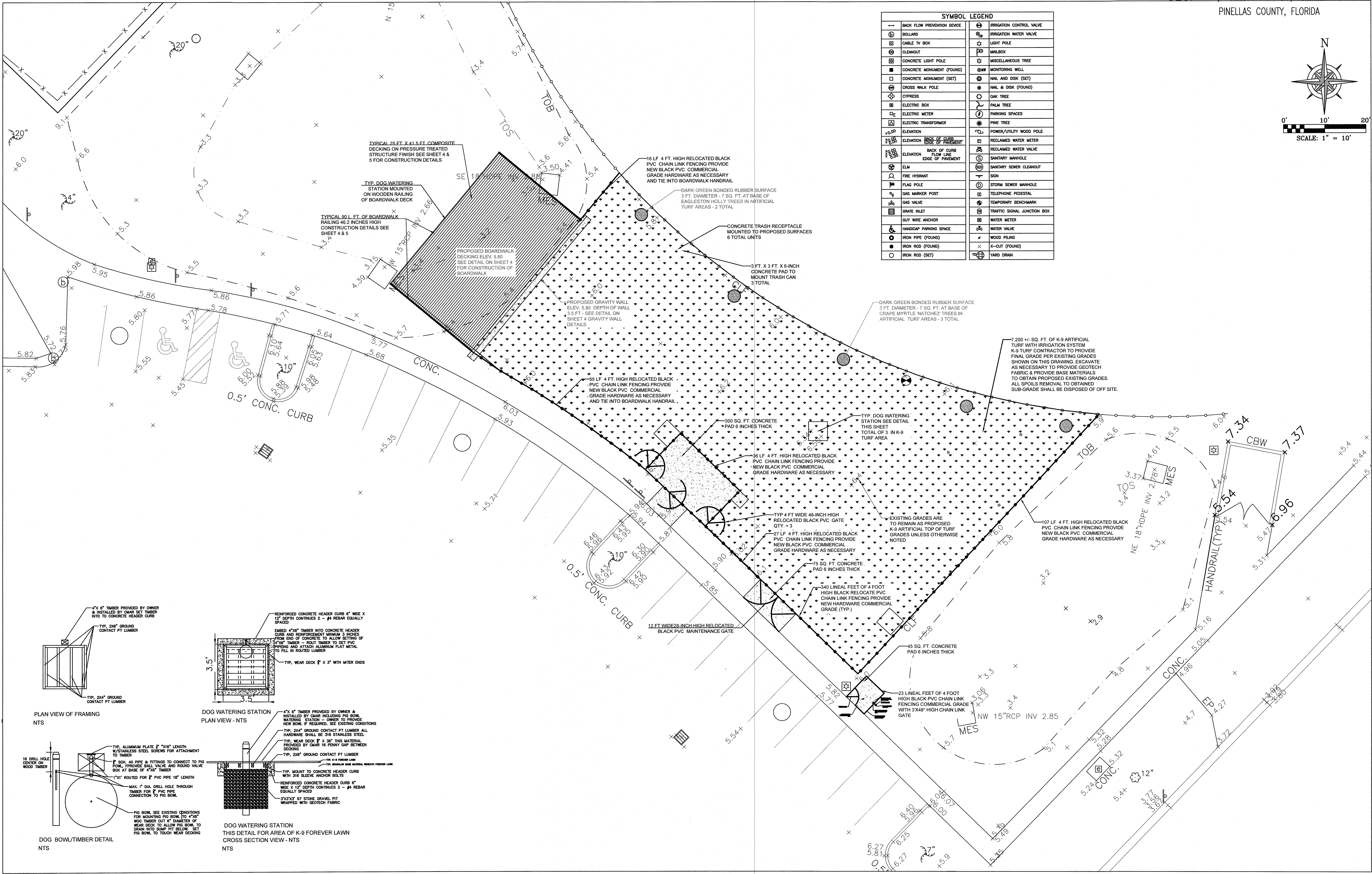
TRANSYSTEMS

I, LEROY CHIN, HEREBY CERTIFY AS A LICENSED PROFESSIONAL LANDSCAPE ARCHITECT, REGISTERED IN ACCORDANCE WITH FLORIDA STATUTE 471 (481) THAT THE ABOVE PROJECT'S SITE AND/OR CONSTRUCTION PLANS, TO THE BEST OF MY KNOWLEDGE, INFORMATION AND BELIEF, WILL MEET APPLICABLE DESIGN CRITERIA SPECIFIED BY CITY/MUNICIPAL, ORANGE, STATE AND FEDERAL ESTABLISHED STANDARDS. I UNDERSTAND THAT IT IS MY RESPONSIBILITY AS THE PROJECT'S PROFESSIONAL LANDSCAPE ARCHITECT TO PERFORM A QUALITY ASSURANCE REVIEW OF THESE SUBMITTED PLANS.

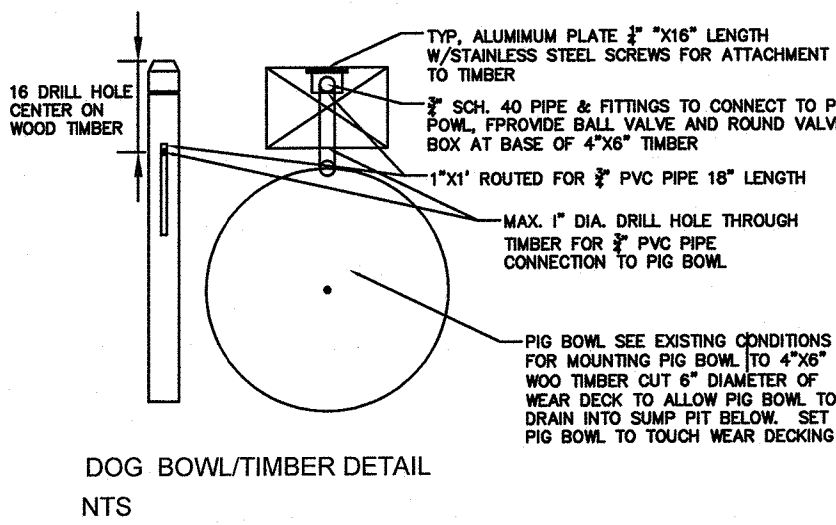
PROJECT NUMBER	SE22.417.00
FIELD DATE: 5/03/2023	
DRAWN BY: LC	FB: xxx PG: xxx
SCALE: 1" = 10'	
SHEET NO. 1 OF X	



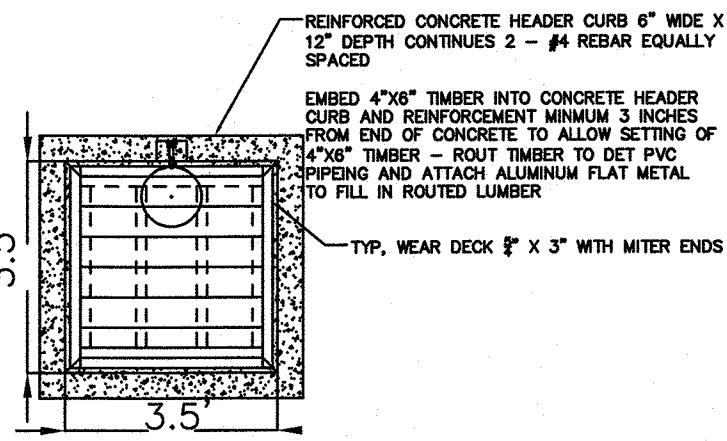
SYMBOL LEGEND	
BACK FLOW PREVENTION DEVICE	IRRIGATION CONTROL VALVE
BOLLARD	IRRIGATION WATER VALVE
CABLE TV BOX	LIGHT POLE
CLEANOUT	MAILBOX
CONCRETE LIGHT POLE	MISCELLANEOUS TREE
CONCRETE MONUMENT (FOUND)	MONITORING WELL
CONCRETE MONUMENT (SET)	NAIL AND DISK (SET)
CROSS WALK POLE	NAIL & DISK (FOUND)
CYPRESS	OAK TREE
ELECTRIC BOX	PALM TREE
ELECTRIC METER	PARKING SPACES
ELECTRIC TRANSFORMER	PINE TREE
ELEVATION	POWER/UTILITY WOOD POLE
ELEVATION	RECLAIMED WATER METER
ELEVATION	RECLAIMED WATER VALVE
ELEVATION	SANITARY MANHOLE
ELM	SANITARY SEWER CLEANOUT
FIRE HYDRANT	SIGN
FLAG POLE	STORM SEWER MANHOLE
GAS MARKER POST	TELEPHONE PEDESTAL
GAS VALVE	TEMPORARY BENCHMARK
GRATE INLET	TRAFFIC SIGNAL JUNCTION BOX
GUY WIRE ANCHOR	WATER METER
HANDICAP PARKING SPACE	WATER VALVE
IRON PIPE (FOUND)	WOOD PILING
IRON ROD (FOUND)	X-CUT (FOUND)
IRON ROD (SET)	YARD DRAIN



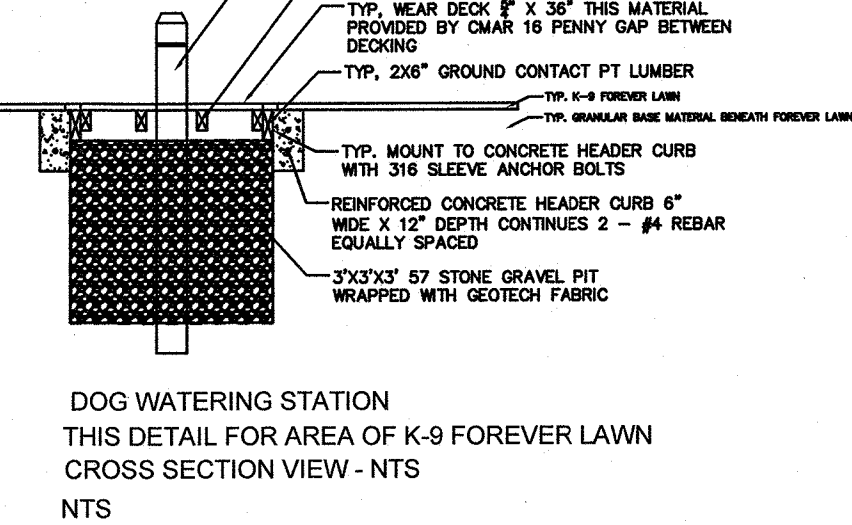
PLAN VIEW OF FRAMING
NTS



DOG BOWL/TIMBER DETAIL
NTS



DOG WATERING STATION
PLAN VIEW - NTS



DOG WATERING STATION
THIS DETAIL FOR AREA OF K-9 FOREVER LAWN
CROSS SECTION VIEW - NTS

TRANSYSTEMS

565 SOUTH HERCULES AVENUE
CLEARWATER, FL 33764
PHONE 727.822.4151
WWW.TRANSYSTEMS.COM

SITE PLAN
MADEIRA BEACH DOG PARK
300 MUNICIPAL DRIVE

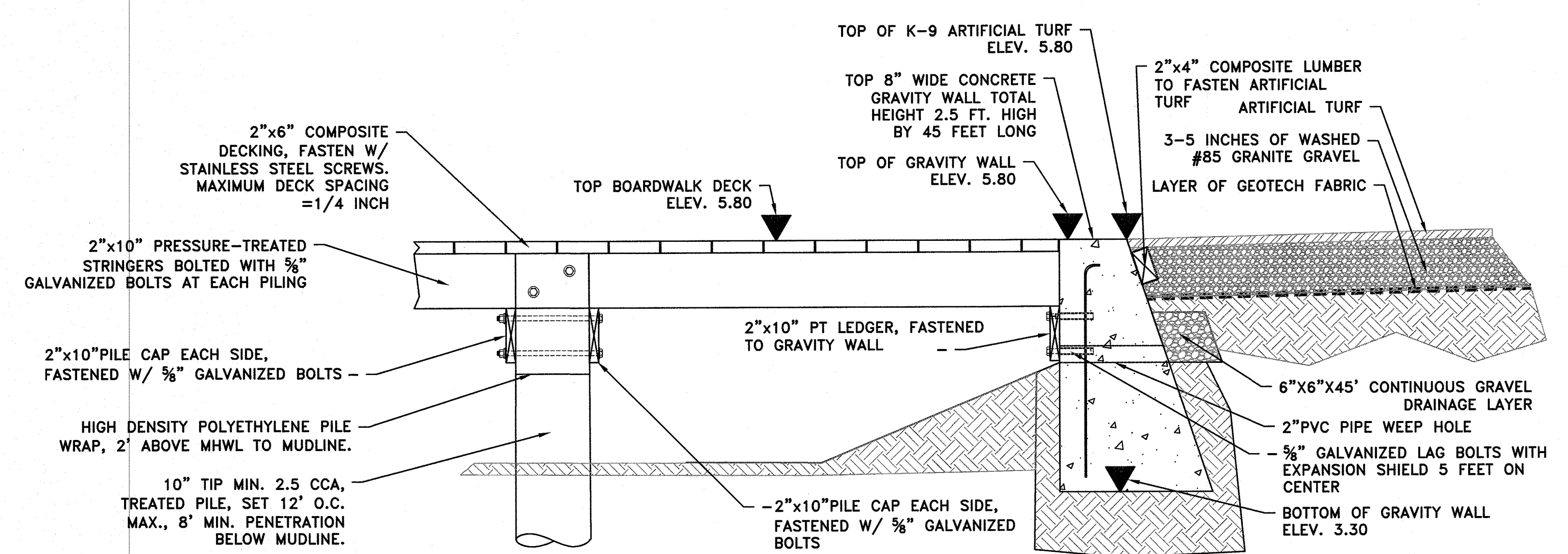
FLORIDA

I, LEROY CHIN, HEREBY CERTIFY AS A LICENSED PROFESSIONAL LANDSCAPE ARCHITECT, REGISTERED IN ACCORDANCE WITH FLORIDA STATUTE 471 (481) THAT THE ABOVE PROJECT'S SITE AND/OR CONSTRUCTION PLANS, TO THE BEST OF MY KNOWLEDGE, INFORMATION AND BELIEF, WILL MEET APPLICABLE DESIGN CRITERIA SPECIFIED BY CITY MUNICIPAL ORDINANCE, STATE AND FEDERAL ESTABLISHED STANDARDS. I UNDERSTAND THAT IT IS MY RESPONSIBILITY AS THE PROJECT'S PROFESSIONAL LANDSCAPE ARCHITECT TO PERFORM A QUALITY ASSURANCE REVIEW OF THESE SUBMITTED PLANS.

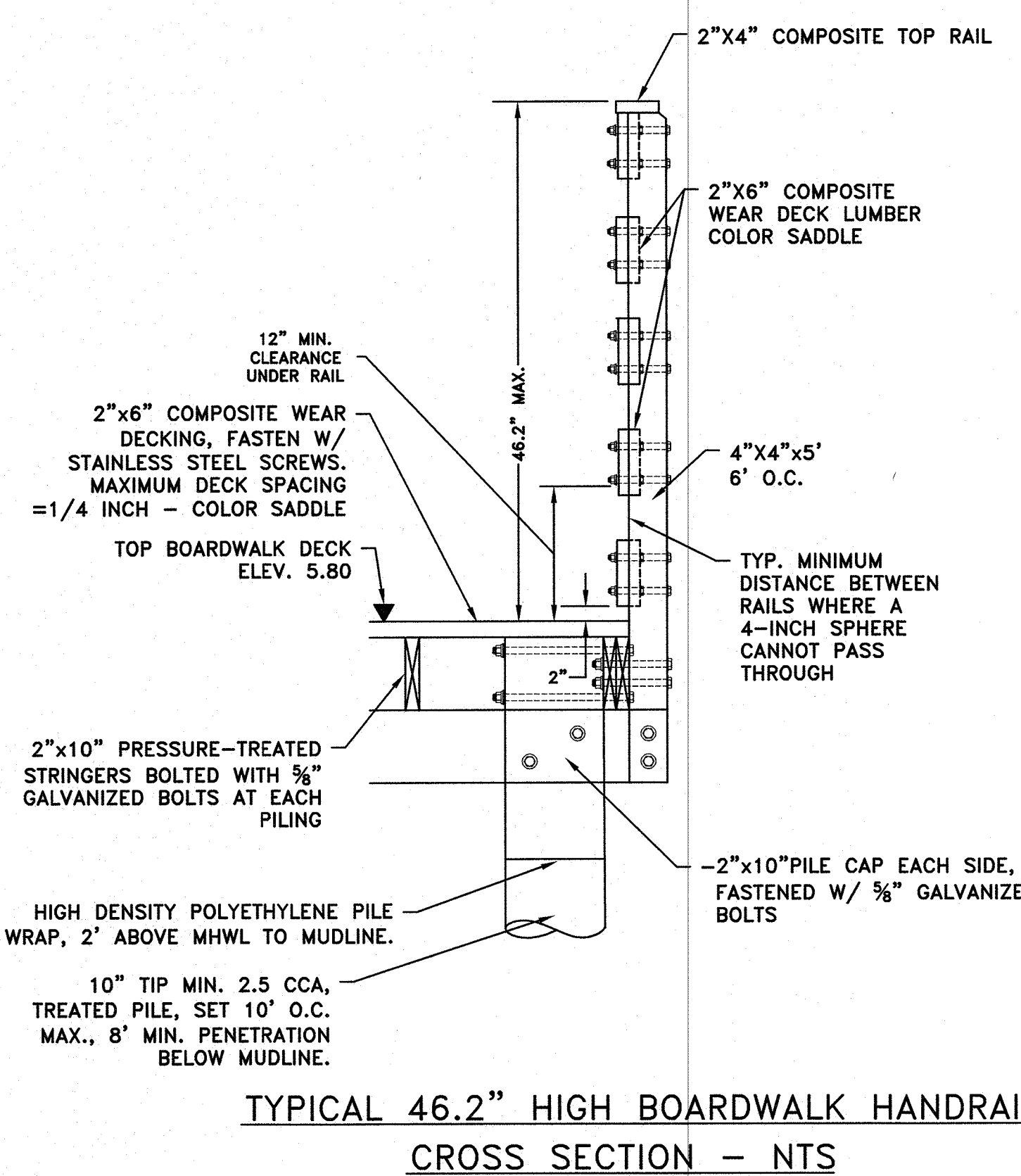
LEROY CHIN, FL RLA 1206

NOT A BOUNDARY SURVEY

PROJECT NUMBER SE22.417.00
DATE: 5/03/2023
DRAWN BY: LC FB: xxx PC: xxx
SCALE: 1" = 10'
SHEET NO. 2 OF X

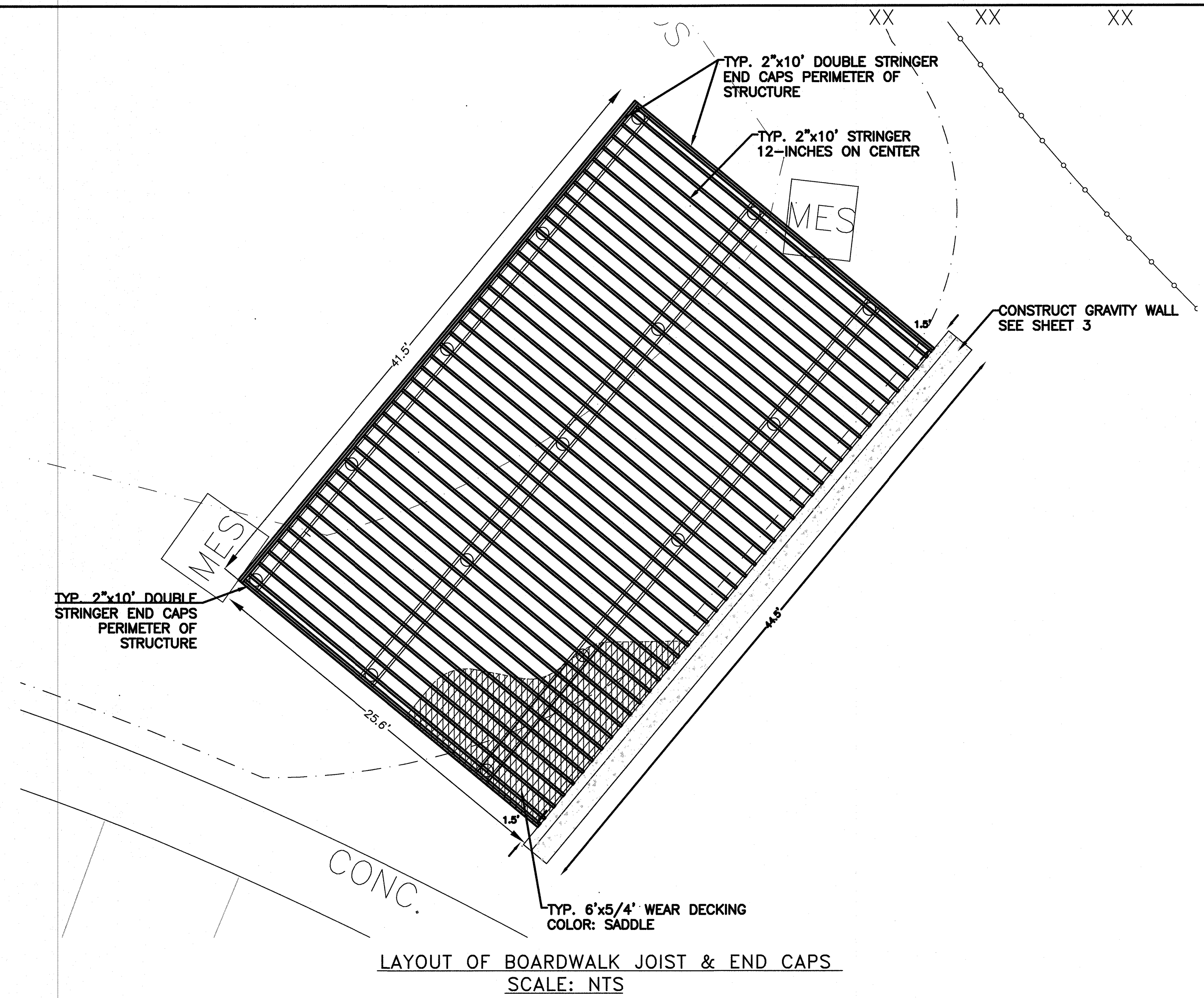
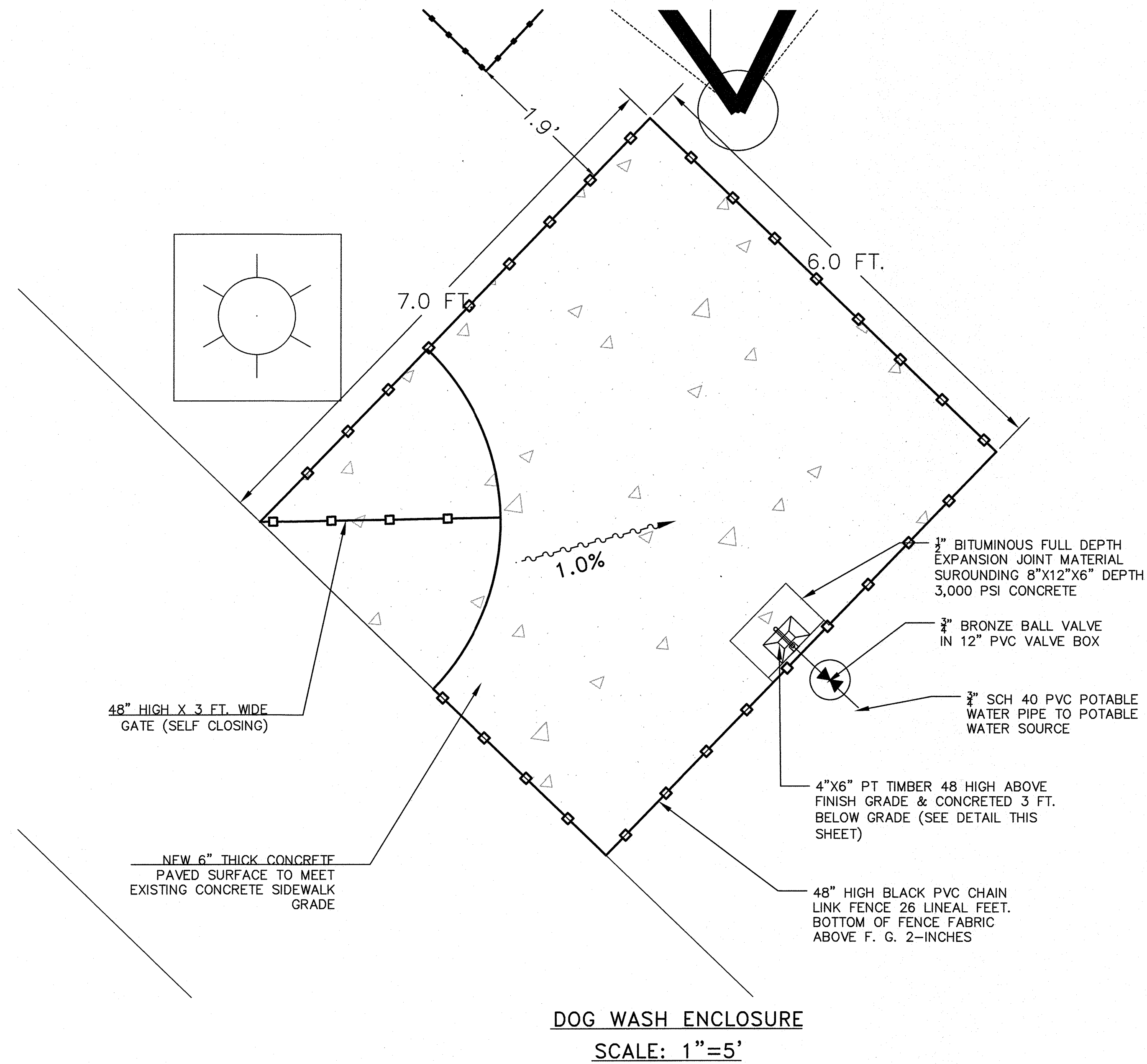


GENERAL NOTES



TYPICAL CROSS SECTION OF BOARDWALK - NTS

- GENERAL NOTES:**
1. ALL CONSTRUCTION TO MEET OR EXCEED PINELLAS COUNTY LAND DEVELOPMENT CODE SECTION 166.
 2. PILING SPACING (CENTER TO CENTER) TO BE 10 FEET NOMINAL.
 3. NAIL ALL JOINTS WITH 30D GALVANIZED NAILS BEFORE BOLTING.
 4. SCREW COMPOSITE DECKING TO EACH STRINGER WITH SS #504 SCREWS.
 5. ALL BOLTS, NUTS & WASHERS SHALL BE GALVANIZED.
 6. ALL TIMBER PILES SHALL BE SOUTHERN PINE GRADE ONE (1) & TREATED 2.5 P.C.F. OF C.C.A. (10" MINIMUM TIP DIAMETER).
 7. ALL PILINGS TO BE SEATED WITH FREE FALLING HAMMER LAST 2 FEET MINIMUM.
 8. ALL FRAMING, CAPS AND STRINGERS SHALL BE SOUTHERN PINE GRADE ONE (1), FINISHED RS, & TREATED W/0.6 OF C.C.A.
 9. STRINGER LAP JOINTS = 4 FEET MIN. FOR DOUBLE STRINGERS.
 10. 2 FEET MIN. FOR INTERMEDIATE STRINGERS.
 11. ALL PLANKS (COMPOSITE) AND POSTS SHALL BE SOUTHERN PINE GRADE ONE (1), FINISHED S4S AND TREATED WITH 0.4 P.C.F. OF C.C.A.
 12. ALL PERIMETER FRAMING TO BE DOUBLE 2"x10".



CROSS SECTION - NTS

May 15, 2023 - 8:33pm I:\CAD Projects\Projects_SDP X Drive\2022\SE22-417.00 Madeira Beach Dog Park Renovation\Engineering\Drawings\SE22-417-T DOG PARK MASTER DEVELOPMENT PLAN 4-13-2023.dwg

REV.#	DESCRIPTION	DATE	BY

TRANSYSTEMS

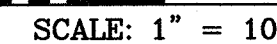
565 SOUTH HERCULES AVENUE
CLEARWATER, FL 33764
PHONE 727.822.4151
WWW.TRANSYSTEMS.COM

STRINGER, DECKING & DETAILS
MADEIRA BEACH DOG PARK
300 MUNICIPAL DRIVE
CITY OF MADEIRA BEACH FLORIDA

I, ALBERT CARRIER, HEREBY CERTIFY AS A LICENSED PROFESSIONAL ENGINEER, REGISTERED IN ACCORDANCE WITH FLORIDA STATUTE 471 (481) THAT THE ABOVE PROJECT'S SITE AND/OR CONSTRUCTION PLANS, TO THE BEST OF MY KNOWLEDGE, INFORMATION AND BELIEF, WILL MEET APPLICABLE DESIGN CRITERIA SPECIFIED BY CITY MUNICIPAL ORDINANCE, STATE AND FEDERAL ESTABLISHED STANDARDS. I UNDERSTAND THAT IT IS MY RESPONSIBILITY AS THE PROJECT'S PROFESSIONAL ENGINEER TO PERFORM A QUALITY ASSURANCE REVIEW OF THESE SUBMITTED PLANS.

ALBERT P. CARRIER, P.E. 53990

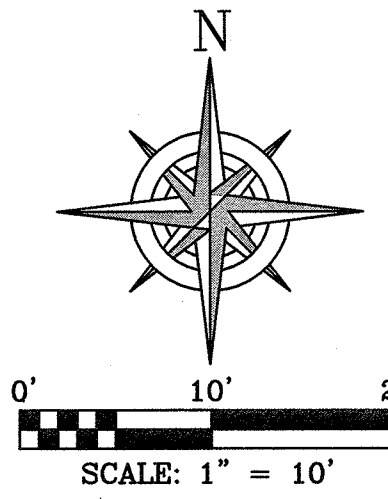
PROJECT NUMBER	SE22-417.00
DATE	5/03/2023
DRAWN BY: LC	FB: xxx PG: xxx
SCALE:	1" = 10'
SHEET NO.	4 OF X



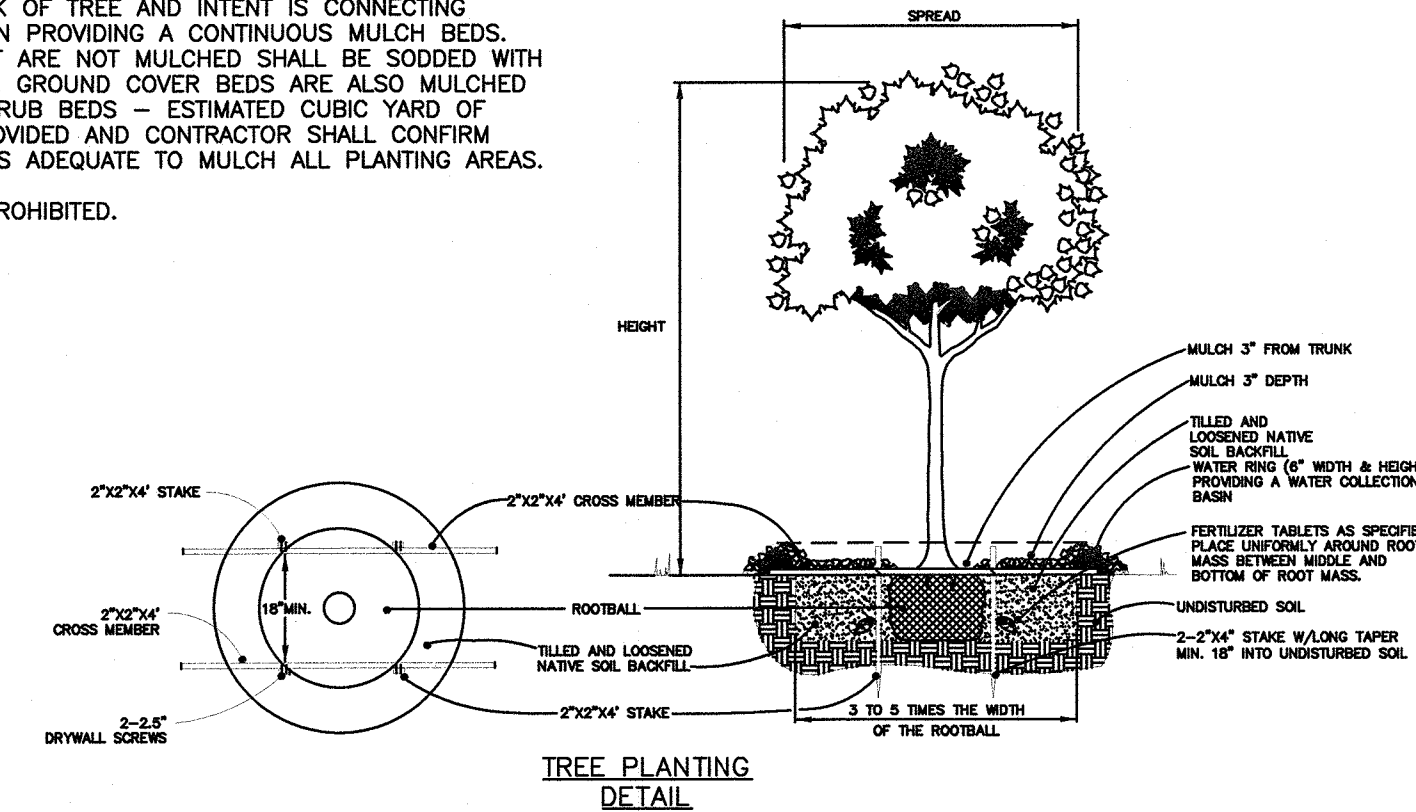
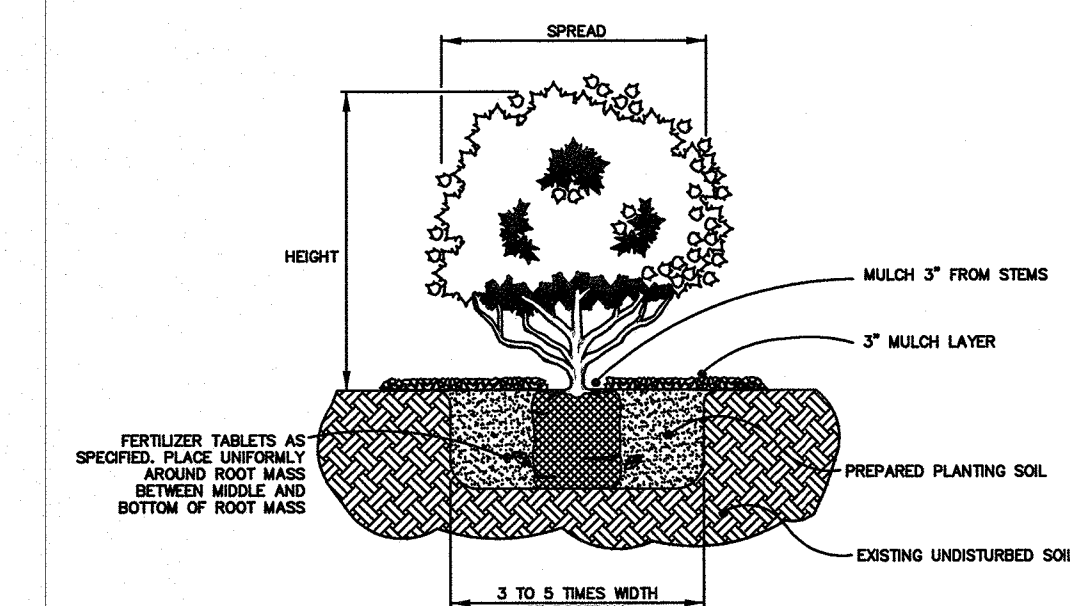
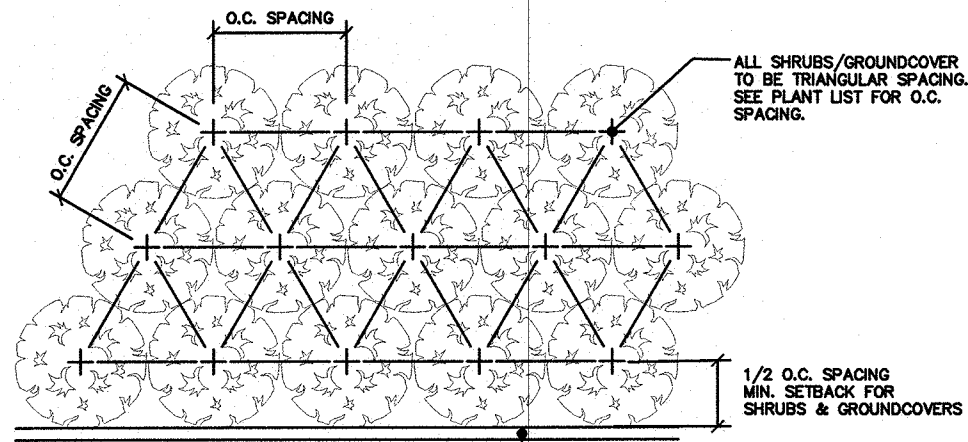
SYMBOL		LEGEND	
←	BACK FLOW PREVENTION DEVICE	⊗	IRRIGATION CONTROL VALVE
Ⓢ	BOLLARD	⊗	IRRIGATION WATER VALVE
Ⓢ	CABLE TV BOX	☆	LIGHT POLE
Ⓢ	MAILBOX	Ⓢ	MISCELLANEOUS TREE
Ⓢ	CONCRETE LIGHT POLE	⊗	MONITORING WELL
■	CONCRETE MONUMENT (FOUND)	⊗	NAIL AND DISK (SET)
□	CONCRETE MONUMENT (SET)	⊗	NAIL & DISK (FOUND)
⊕	CROSS WALK POLE	Ⓢ	PAVING SPACES
Ⓢ	CYPRESS	Ⓢ	PINE TREE
Ⓢ	ELECTRIC BOX	Ⓢ	POWER/UTILITY WOOD POLE
Ⓢ	ELECTRIC METER	Ⓢ	RECLAIMED WATER METER
Ⓢ	ELECTRIC TRANSFORMER	Ⓢ	RECLAIMED WATER MANHOLE
Ⓢ	ELEVATION	Ⓢ	SANITARY MANHOLE
Ⓢ	ELEVATION BACK OF CURB	Ⓢ	SANITARY SEWER CLEANOUT
Ⓢ	ELEVATION EDGE OF PAVEMENT	Ⓢ	SIGN
Ⓢ	ELEVATION BACK OF CURB	Ⓢ	STORM SEWER MANHOLE
Ⓢ	ELEVATION FLOW LINE	Ⓢ	TELEPHONE PEDESTAL
Ⓢ	ELEVATION EDGE OF PAVEMENT	Ⓢ	TEMPORARY BENCHMARK
Ⓢ	ELM	Ⓢ	TRAFFIC SIGNAL JUNCTION BOX
Ⓢ	FIRE HYDRANT	Ⓢ	WATER METER
Ⓢ	FLAG POLE	Ⓢ	WOOD PILING
Ⓢ	GAS MARKER POST	Ⓢ	X-CUT (FOUND)
Ⓢ	GAS VALVE	Ⓢ	YARD DRAIN
Ⓢ	GRATE INLET		
Ⓢ	GUY WIRE ANCHOR		
Ⓢ	HANDICAP PARKING SPACE		
Ⓢ	IRON PIPE (FOUND)		
Ⓢ	IRON ROD (FOUND)		
Ⓢ	IRON ROD (SET)		



NOT A BOUNDARY SURVEY



- GENERAL NOTES:
1. CALL 811 FOR LOCATING ALL UNDERGROUND UTILITIES PRIOR TO ANY EXCAVATION OF THE SITE. ALL PLANT MATERIAL SHALL BE FL GRADE #1. OWNER SHALL INSPECT TREES PRIOR TO OFF LOADING FROM TRUCK. ALL REJECTED TREES SHALL BE REMOVED FROM SITE & NEW PLANTS SHALL BE PROVIDED BY LANDSCAPE CONTRACTOR.
 2. TREES PALMS SHALL HAVE A MINIMUM 3" DIAMETER TREE RING AT BASE AND MULCHED UNLESS PLANTED WITH GROUNDCOVER PLANTINGS.
 3. ALL MULCHED BEDS SHALL BE A MINIMUM/MAXIMUM OF 3" THICK AFTER COMPACTION ALL MULCHING SHALL BE WITH PINE BARK.
 4. ALL PLANTINGS SHALL HAVE 100% COVERAGE WITH AUTOMATIC IRRIGATION SYSTEM WITH RAIN SENSOR - DURING PLANTING PROCESS OF ALL PLANTS - TREES SHALL RECEIVE 30 GALLONS OF WATER PER DAY; SHRUBS SHALL RECEIVE 15 GALLONS OF WATER & GROUND COVERS 5 GALLON OF WATER DURING PLANTING INSTALLATION PERIOD & UNTIL IRRIGATION SYSTEM IS OPERATIONAL COORDINATE WITH IRRIGATION CONTRACTOR WITH WATER SCHEDULE DURING PLANTING AND 6 MONTH SCHEDULE AFTER ACCEPTANCE OF LANDSCAPING BY THE OWNER.
 5. ALL STAKING OF TREES SHALL BE COMPLETED WITHIN 24 HOURS AFTER PLANTING - NO EXCEPTIONS.
 6. SITE SHALL BE POLICED AND TIDED UP AT END OF WORK DAY NO PLANT POTS OR WRAPPINGS OR ANY OTHER PLANTING DERBIES SHALL BE LEFT ON SITE AT END OF DAY OR IN A TRASH COLLECTION CONTAINER ON SITE.
 7. PINE BARK MULCH AREA ARE MINIMUM 3 FT. DIAMETER AT BASE OF ALL CANOPY TREES, UNDERSTORY TREES ARE MULCHED TO 10 FT DIAMETER FROM TRUNK OF TREE AND INTENT IS CONNECTING CANOPIES TOGETHER IN PROVIDING A CONTINUOUS MULCH BEDS. MULCH ALL AREA THAT ARE NOT MULCHED SHALL BE SODDED WITH ST. AUGUSTINE GRASS. GROUND COVER BEDS ARE ALSO MULCHED AND BASE OF ALL SHRUB BEDS - ESTIMATED CUBIC YARD OF MULCH HAS BEEN PROVIDED AND CONTRACTOR SHALL CONFIRM QUANTITY OF MULCH IS ADEQUATE TO MULCH ALL PLANTING AREAS.
 8. CYPRESS MULCH IS PROHIBITED.



- NOTES:
1. ALL WOOD SHALL BE SPRUCE OR PINE-HOT PRESSURE TREATED.
 2. CROSS TIES SHALL NOT CROSS OVER WOODY ROOTS.
 3. REMOVE ALL STRIPS & OR WIRE WRAPPING AROUND TRUNK & CUT OFF TOP OF ROOT BALL.
 4. REMOVE ALL STRAPS, ROPES, WIRE, A/OR STRINGS USED TO LIFT THE ROOT BALL.
 5. REMOVE ALL BURLAP A/OR WIRE FROM THE TOP OF THE ROOT BALL.
 6. TOP OF ROOT BALL SHALL BE SET LEVEL WITH SURROUNDING FINISH GRADE.

PLANT LIST

QTY	SYMBOL	COMMON NAME	BOTANICAL NAME	PLANT SIZE	REMARKS
5 1/1 3	CMN EAH SB	UNDERSTORY TREES Crape Myrtle 'Natchez' Std. Eagleston Holly Std. Silver Buttonwood Std.	Logertronia indica 'Natchez' Ilex x attenuata 'Eagleston' Std. Conocarpus erectus var.sericeus Std.	Min. 12'-14' Ht., 3" Cal. 45 GAL.FL#1 Std. Min. 12'-14' Ht., 3" Cal. 45 GAL.CONT. FL#1 Min. 12'-14' Ht., 3" Cal. 45 GAL.CONT. FL#1	Non Native, Mod. Drought, Light FS/PS, Mod. Low Native, Mod. Drought, Light FS/PS, Mod Salt Native, High Drought, Light FS/PS, Mod Salt
30 43 65 24	B F P S	SHRUBS Silver Buttonwood - shrub form Dwarf Firebush Dwarf Podocarpus 'Pringles' Simson's Stopper	Conocarpus erectus var.sericeus Harmelia patens 'compada' Podocarpus macrophyllus 'Pringles' Myrianthes fragrans	Spr. 18" Ht. 24" 3 gal. cont. Spr. 18" Ht. 24" 3 gal. cont. Spr. 18" Ht. 24" 3 gal. cont. Spr. 18" Ht. 24" 3 gal. cont.	36" O.C.; Native, High Drought, FS/PS; Low Salt 36" O.C.; Native High Drought; FS/PS Mod. Salt 24" O.C.; Non-Native Mod. Drought; FS/PS Mod. Salt 24" O.C.; Native Mod. Drought; FS/PS Mod. Salt
631 21	AJ Cu. Yds.	GROUNDCOVERS Asiatic Jasmine Minima Pine Bark Mulch Medium Nuggets contractor to verify quantity in the field	Trachelospermum asiaticum	Spr. 8" Ht. 6" 1 gallon cont.	12" O.C. Non-Native, Mod. Drought, PS/FS Mod. Salt Pine Bark Nuggets 3-inch Depth, 15 cu. yd. of medium nuggets 6 cu. yds. mini nuggets for ground cover beds all shrubs 9 sq. ft., trees

TRANSYSTEMS

565 SOUTH HERCULES AVENUE
CLEARWATER, FL 33764
PHONE 727.822.4151
WWW.TRANSYSTEMS.COM

LANDSCAPE PLAN
MADEIRA BEACH DOG PARK
300 MUNICIPAL DRIVE

FLORIDA

I, LEROY CHIN, HEREBY CERTIFY AS A LICENSED PROFESSIONAL LANDSCAPE ARCHITECT, REGISTERED IN ACCORDANCE WITH FLORIDA STATUTE 471 (481) THAT THE ABOVE PROJECT'S SITE AND/OR CONSTRUCTION PLANS, TO THE BEST OF MY KNOWLEDGE, INFORMATION AND BELIEF, WILL MEET APPLICABLE DESIGN CRITERIA SPECIFIED BY CITY MUNICIPAL, OR STATE AND FEDERAL ESTABLISHED STANDARDS. I UNDERSTAND THAT IT IS MY RESPONSIBILITY AS THE PROJECT'S PROFESSIONAL LANDSCAPE ARCHITECT TO PERFORM A QUALITY ASSURANCE REVIEW OF THESE SUBMITTED PLANS.

LEROY CHIN, FL RLA 1206

NOT A BOUNDARY SURVEY

PROJECT NUMBER SE22.417.00
DATE: 5/03/2023
DRAWN BY: LC FB: xxx PG: xxx
SCALE: 1" = 10'
SHEET NO. 7 OF X