

**PLANT SCHEDULE**

CODE	QTY	BOTANICAL NAME	COMMON NAME	CONT	MIN. CAL	MIN. SIZE	SPACING
<b>TREES</b>							
CE	1	Conocarpus erectus 'Sericeus' Native, D.T., 3-4 Trunks	Silver Buttonwood	-	2' Cal.+	8'-10' Ht., 3'-4' Sp.	
SP	2	Sabal palmetto Native, Drought Tolerant	Sabal Palm	-		12' CT, Matched Ht.	
<b>SHRUBS</b>							
CH	50	Chrysobalanus icaco 'Horizontalis' Native, Drought Tolerant	Horizontal Cocoplum	3 gal., 14" Ht. x 14" Sp.			24" o.c.
MF	14	Myrsine fragrans Native, Drought Tolerant	Simpson's Stopper	7 Gal., 32" Ht. x 30" Sp.			24" o.c.
ZF	12	Zamia floridana Native, Drought Tolerant	Coontie	3 Gal., 18" Ht. x 18" Sp.			36" o.c.
<b>GROUND COVERS</b>							
AG	102	Arachis glabrata-rhizoma Drought Tolerant	Ornamental Peanut Grand Reserve	6"x18", 1 gal.®			12" o.c.
HL	101	Helianthus debilis vestitus Native, Drought Tolerant	West Coast Beach Sunflower	12"x12", 1 gal.			18" o.c.
LE	41	Liriope muscari 'Emerald Goddess' Drought Tolerant	Emerald Goddess Liriope	12"x18", 1 gal.			18" o.c.
TA	105	Trachelospermum asiaticum 'Summer Sunset' Drought Tolerant	Dwarf Tricolor Asiatic Jasmine	4"pot®			12" o.c.

Madeira Beach Requirements:

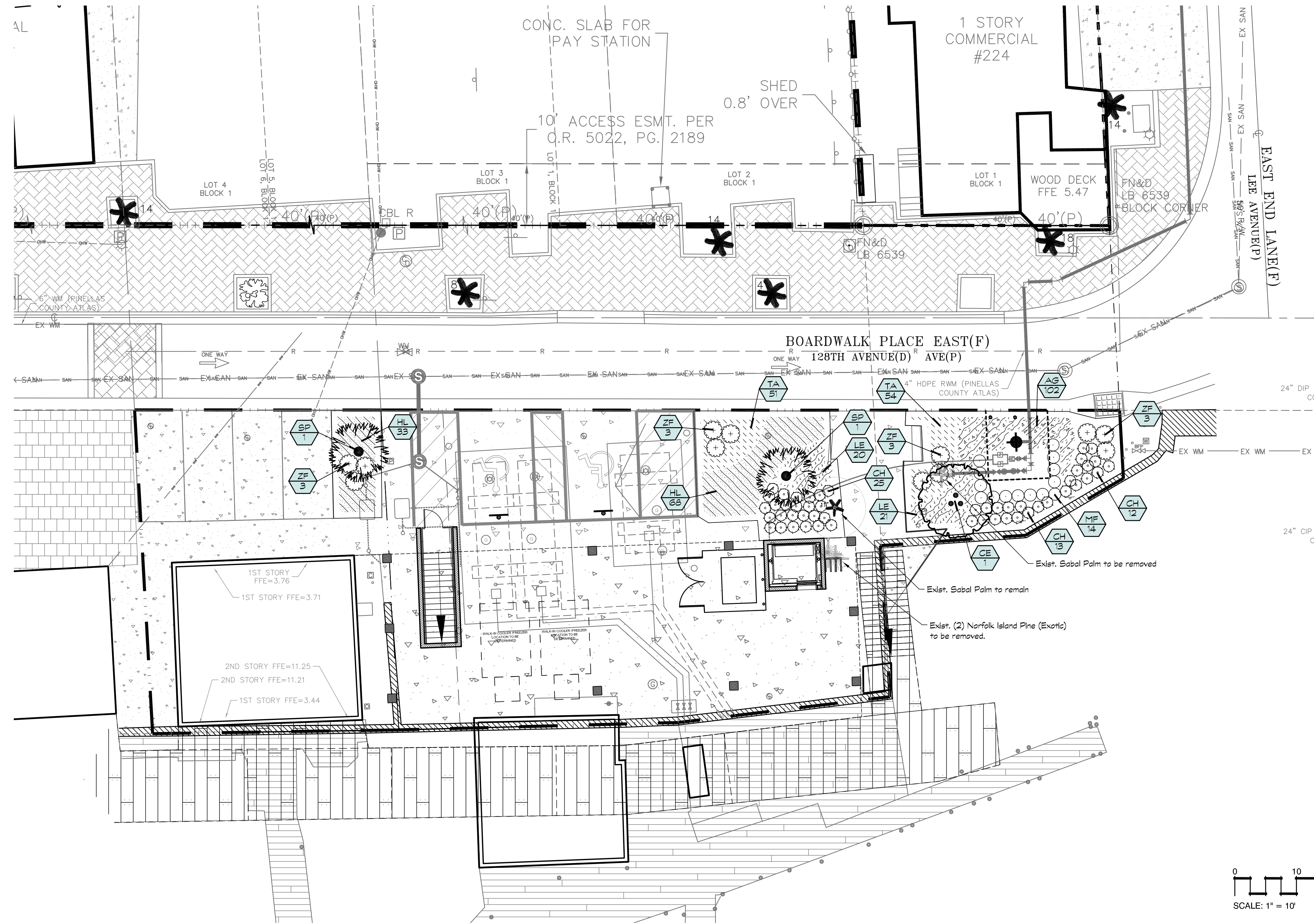
Site - 6,855 SF

Landscape area required - 10%  
6,855 x 10% = 685.5 SF Required

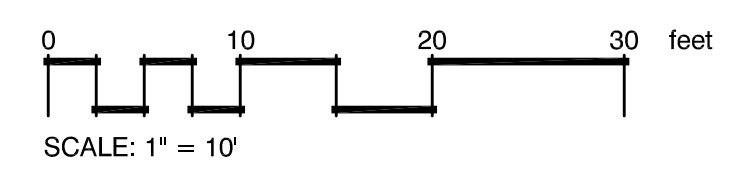
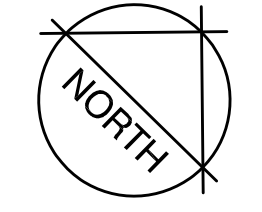
Landscape Area Provided - 1,175.47 SF (17%)  
(Grassed, ground covers, shrubs & trees. Site does not have internal VUA)

1 Tree required per 400 SF of Landscape Area 685.5 / 400 = 1.7 = 2 Trees Required  
2 Trees Provided (2 Proposed Palms + 1 Existing Palm + 1 Proposed Tree)

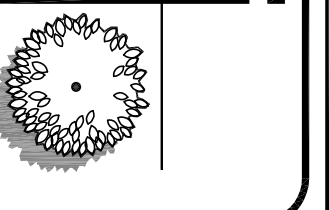
See Sheet LA2 for Landscape Notes & Details.



Sunshine State  
One Call  
of Florida



**ROBERSON RESOURCE GROUP**  
Landscape Architecture & Consulting  
3152 Little Road, # 125, Trinity, Florida 34655  
13825 Icot Blvd., Suite 605  
Clearwater, Florida 33760  
Phone - (727) 524-1818  
Web: RRGGA.com  
LA008161



CONSTRUCTION PLANS ARE NOT VALID UNLESS SIGNED & EMBOSSED WITH LANDSCAPE ARCHITECT'S SEAL  
Date per Digital Signature

Digitally signed by Patrick Roberson  
DN: c=US, st=Florida, l=Trinity, o=Roberson Resource Group, LLC, cn=Patrick Roberson, email=patrick@rrgla.com  
Date: 2024.02.05 11:13:40 -05'00'

Revision	Date

Project Title  
**DONS DOCK**  
at **JOHNS PASS**  
Madeira Beach, Florida

**LANDSCAPE PLAN**  
Project No. 24-07  
Date 02/05/24  
Sheet LA1











