

Beachside  
Street End  
Beautification  
Project

Neighborhood  
Meeting



1<sup>st</sup> meeting - February 13, 2024

2<sup>nd</sup> meeting - February 27, 2024





Street  
End  
locati  
ons

**Legend**

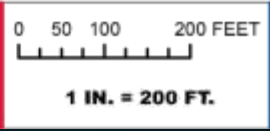
- Pocket Park Location
- Parcel Boundary



1000 N. Ashley Drive,  
Suite 900  
Tampa, FL 33602  
813.620.4500



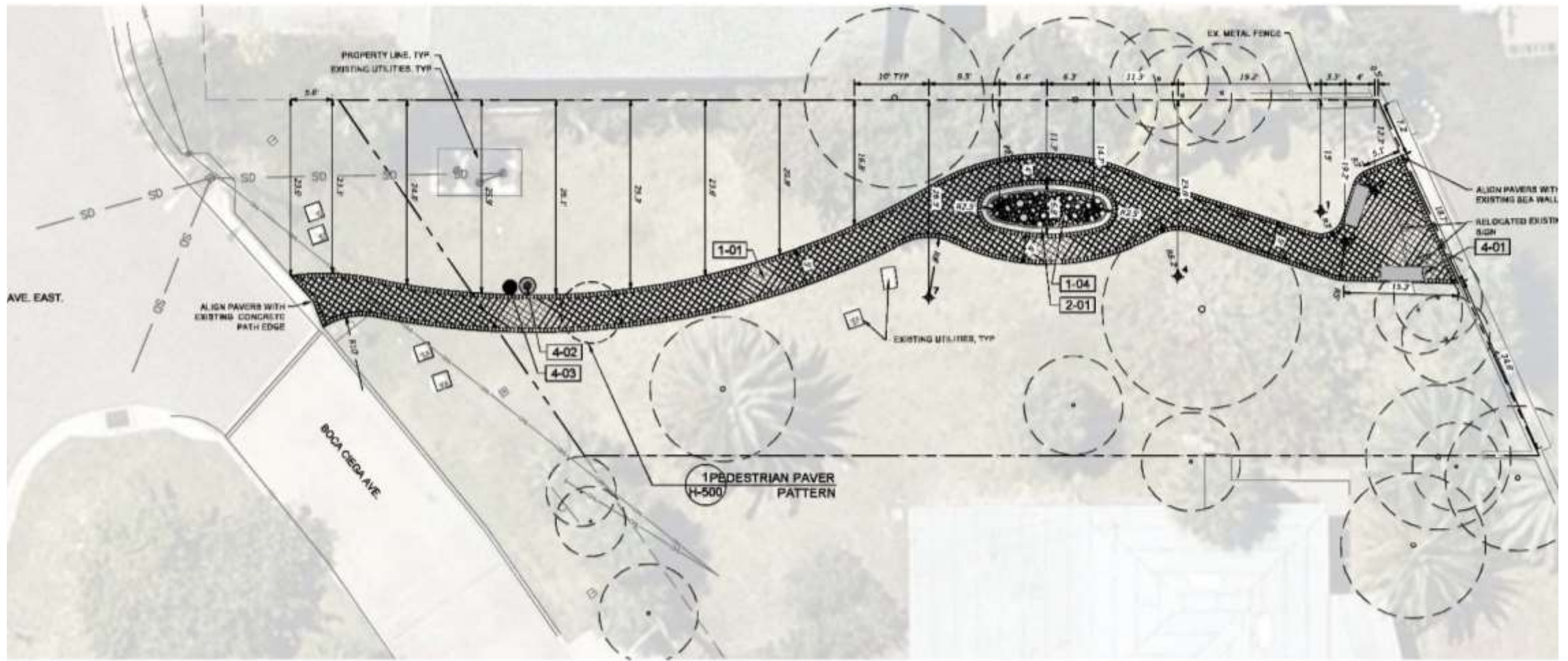
Location Map



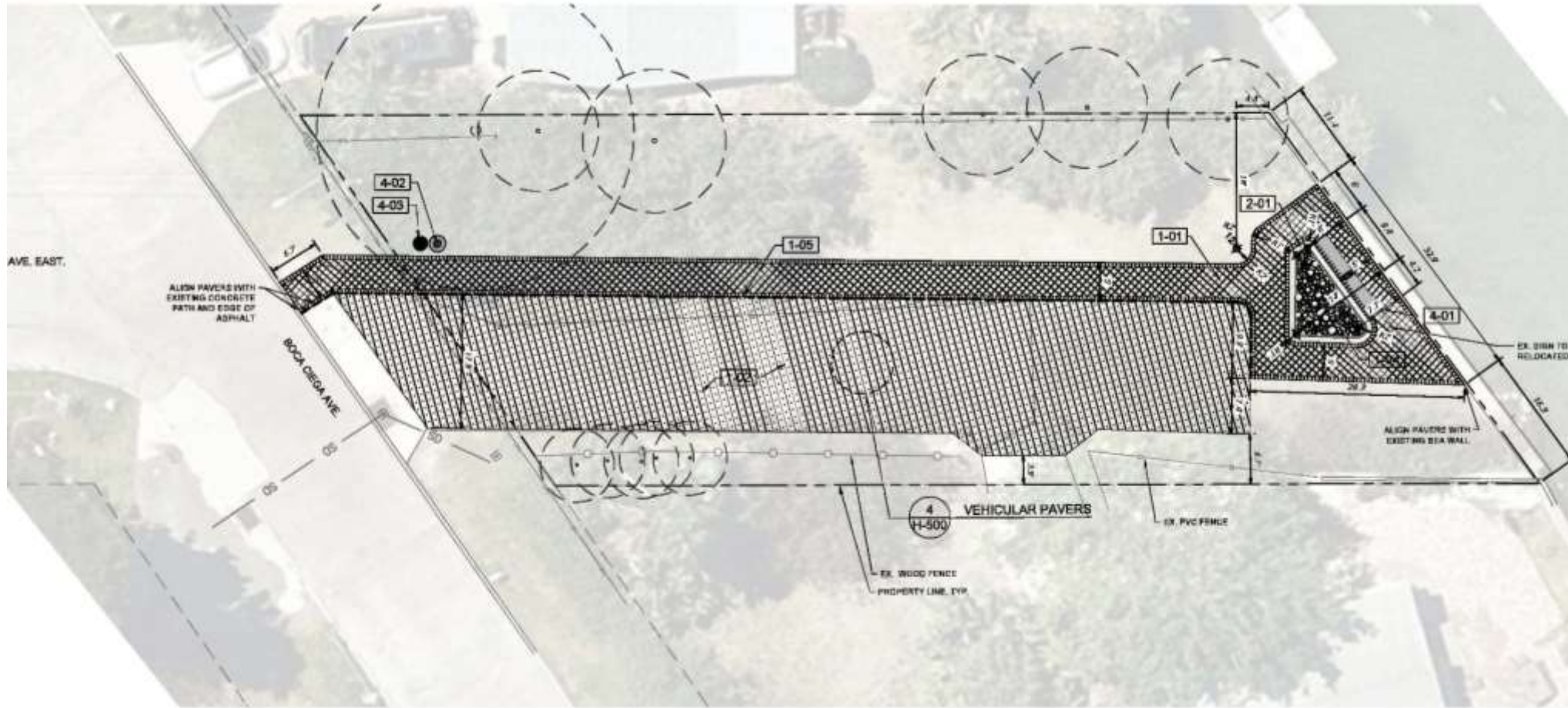
38545.001  
Pocket Parks



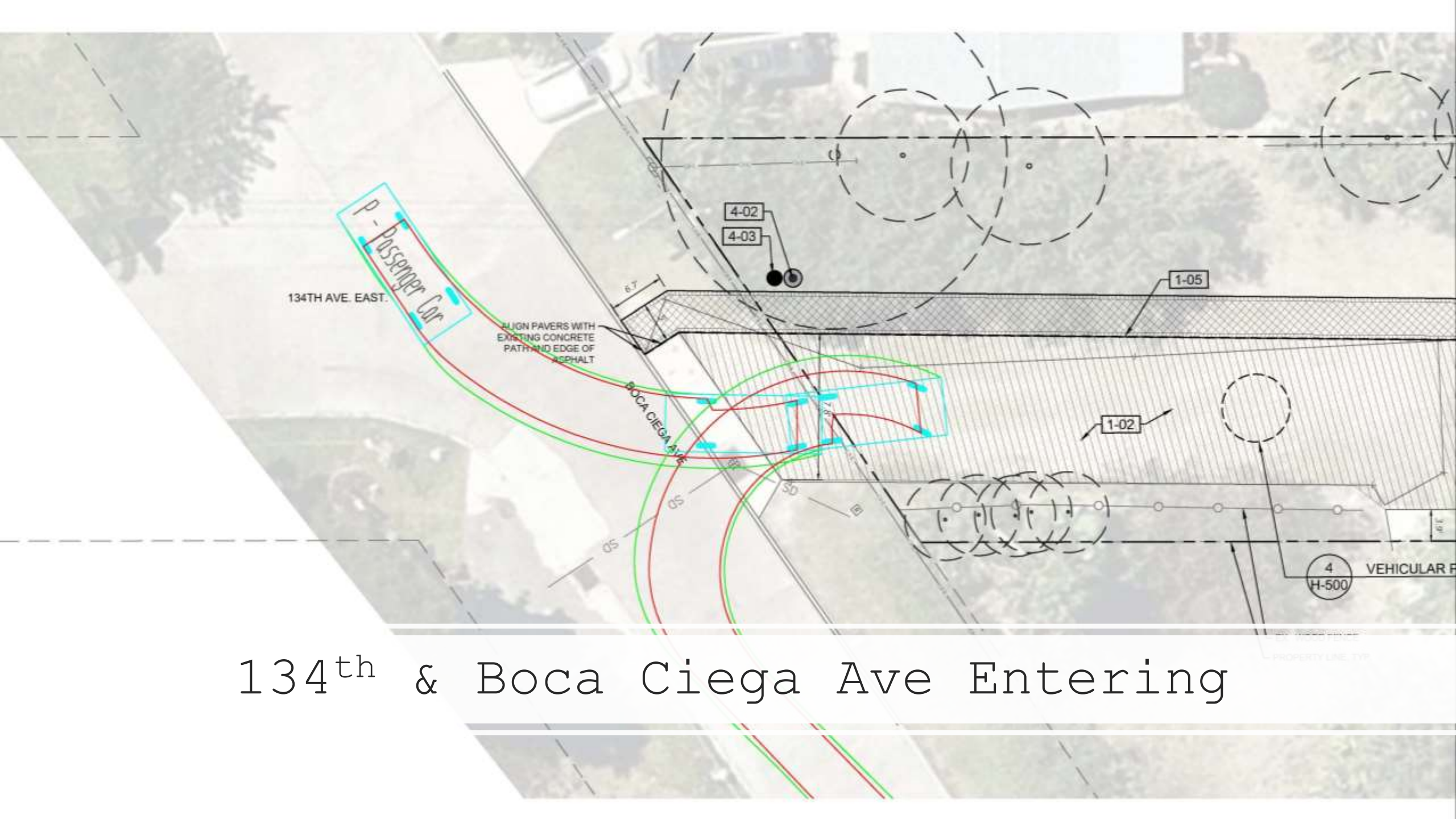
# 135<sup>th</sup> & Boca Ciega Ave



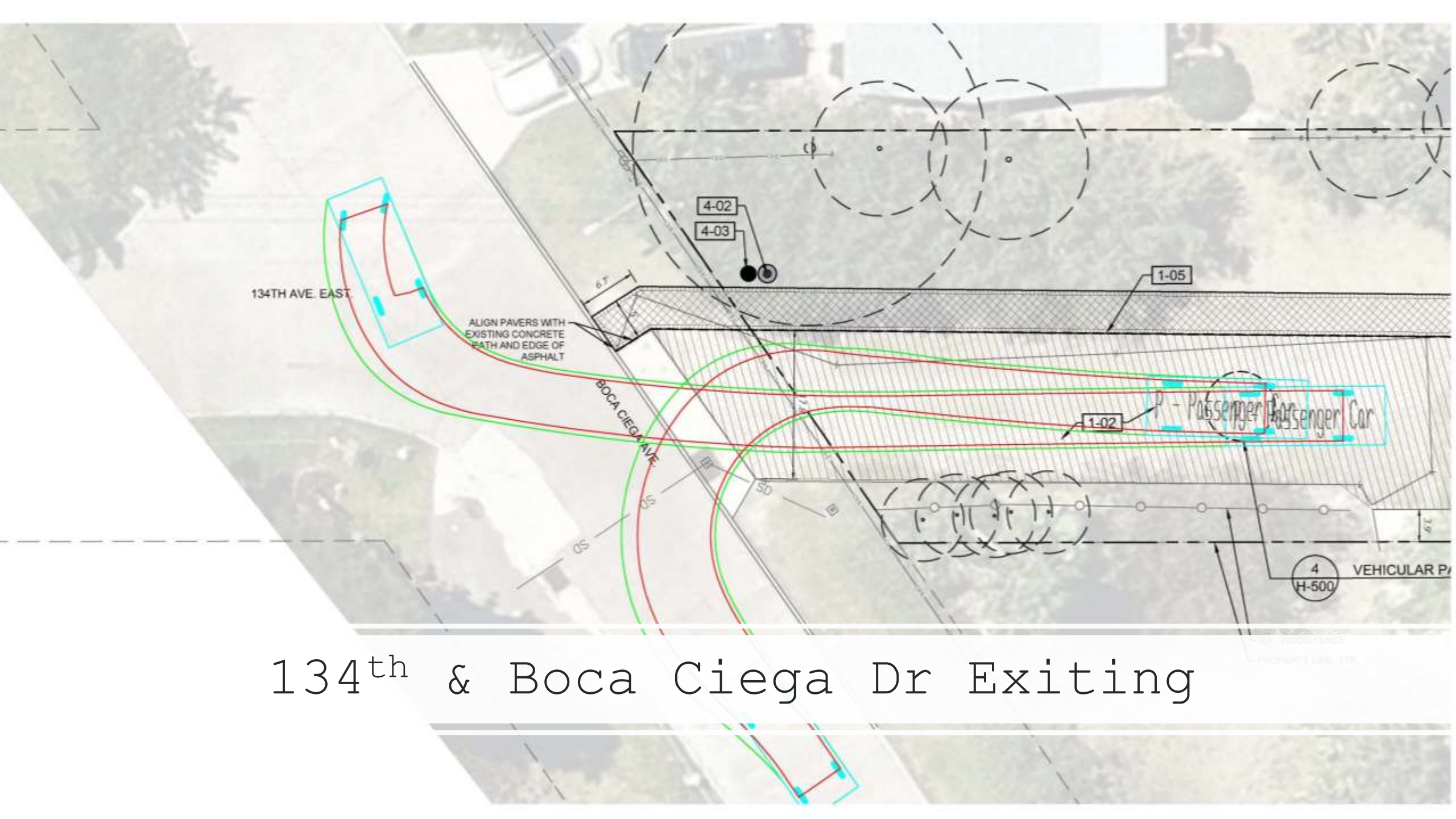
# 134<sup>th</sup> & Boca Ciega Ave







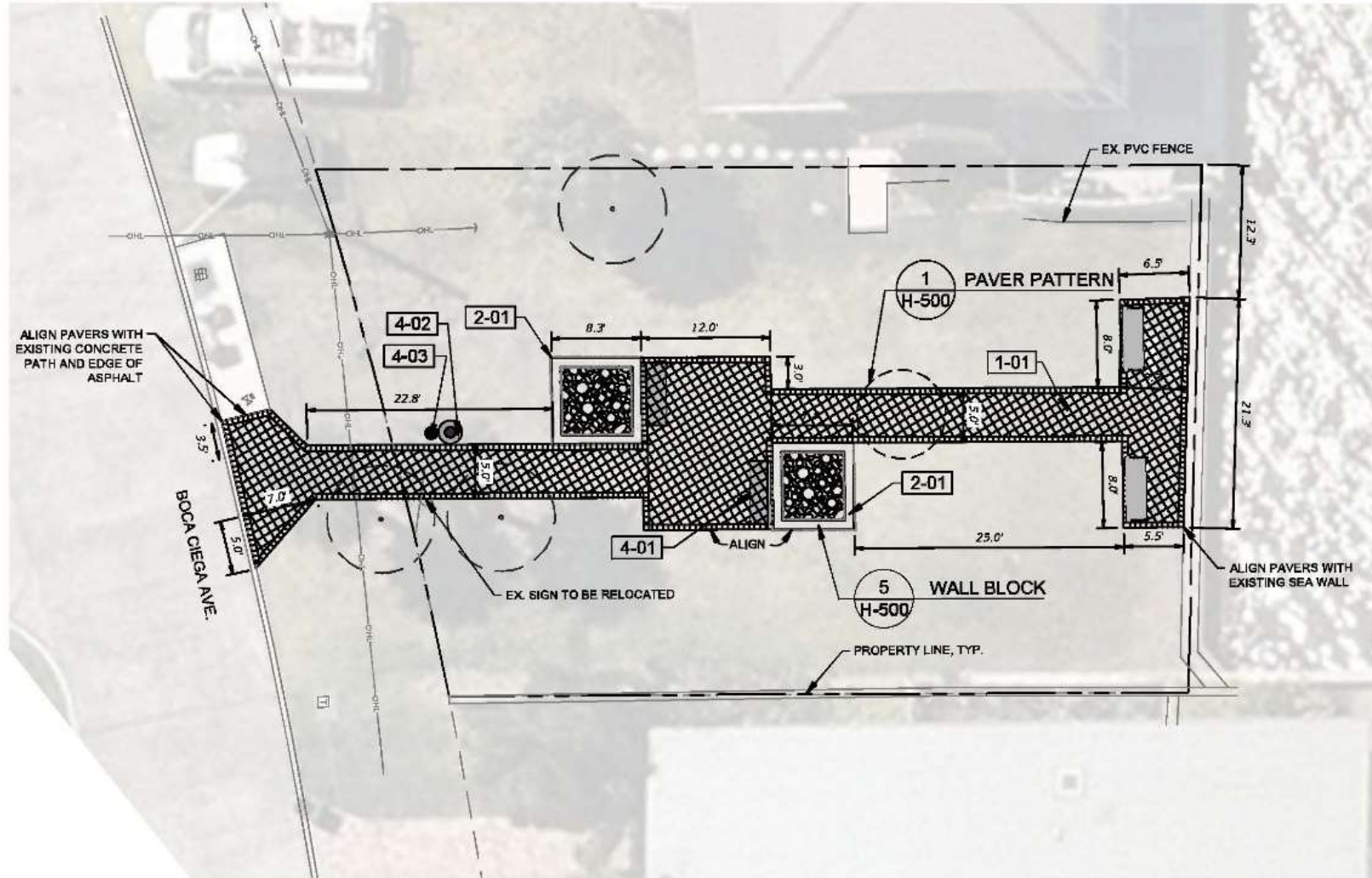
134<sup>th</sup> & Boca Ciega Ave Entering



134<sup>th</sup> & Boca Ciega Dr Exiting



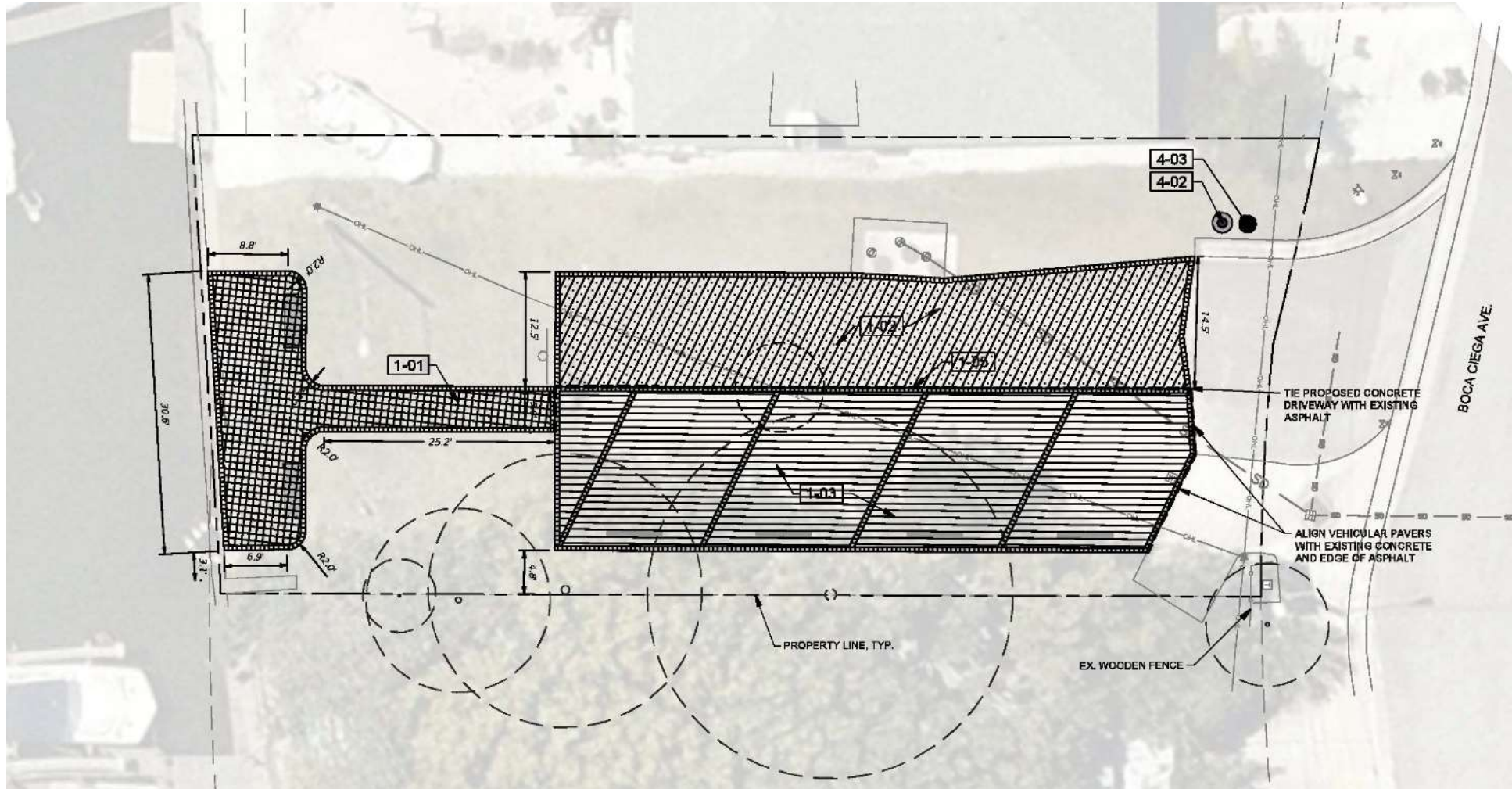
# 132<sup>nd</sup> & Boca Ciega Ave







# 132<sup>nd</sup> & Boca ciega Dr





11  
stone  
Paver  
Walkway





# Drive & Parking Area

---

## **Belgard Aqualine Series**

### Application Areas

- Driveways
- Pools
- Patios
- Walkways





Belgard  
castleman  
or wall





# Tree schedule



Chainsaw Plum



Christmas Palm



Buttonwood Tree



Plans list  
Shrub  
Schedule  
Correction  
Agave  
Schedule



Blue Glow Agave



False Agave



*Agave desmettiana* Desmettiana Agave

*Photo by Alan Franck*



# Agave schedule

Blue  
Flame  
Agave



Blue  
Agave



Ray of  
Light  
Agave





Comments  
from  
February  
13<sup>th</sup>  
neighborhood  
meeting

Will we consider pervious pavers?

Will we consider adding designated parking spots at all street ends?

How will we stop the mud pit and use of the 132<sup>nd</sup> & Boca Ciega Ave parking being used as a circular driveway?

Can we add bike racks?

Will we consider adding a playground to one of the street ends?

Will we replace the palm tree that died at 133<sup>rd</sup>

Will this project have to go through permitting review?



Thank you for attending!

# QUESTIONS

?

Please call, email, or text with any questions or concerns

Megan Wepfer

Public Works Director

727-543-8153