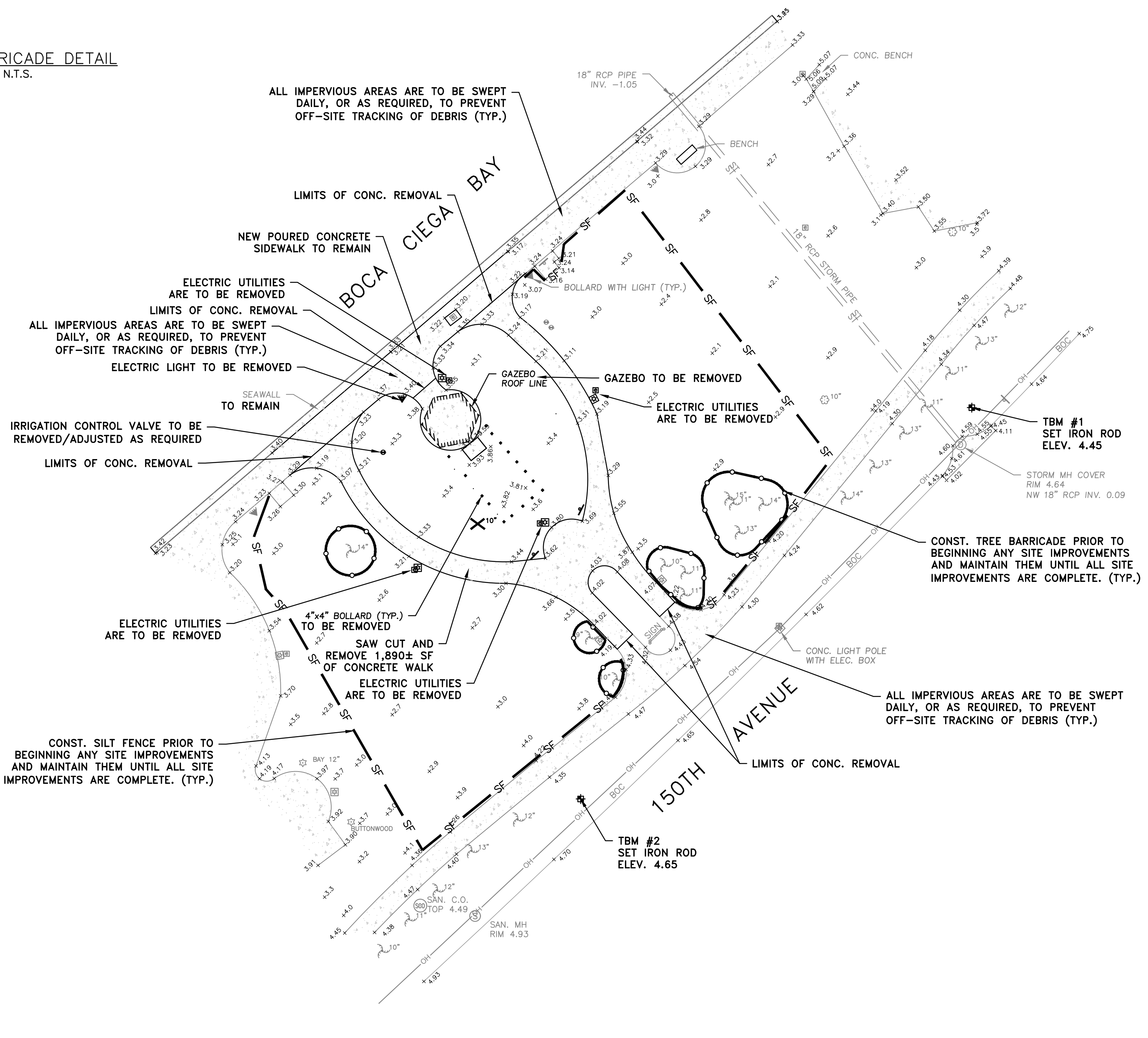
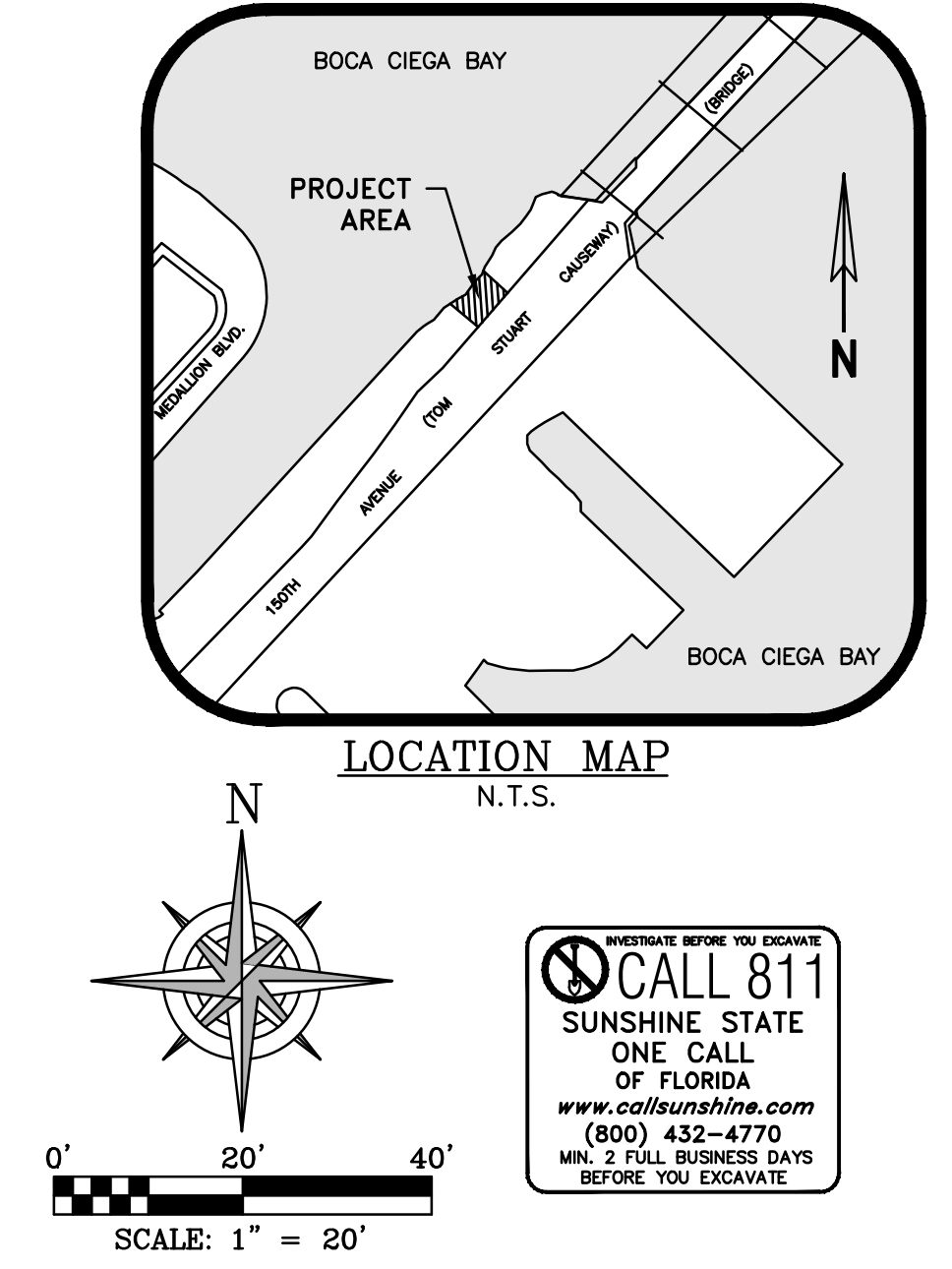
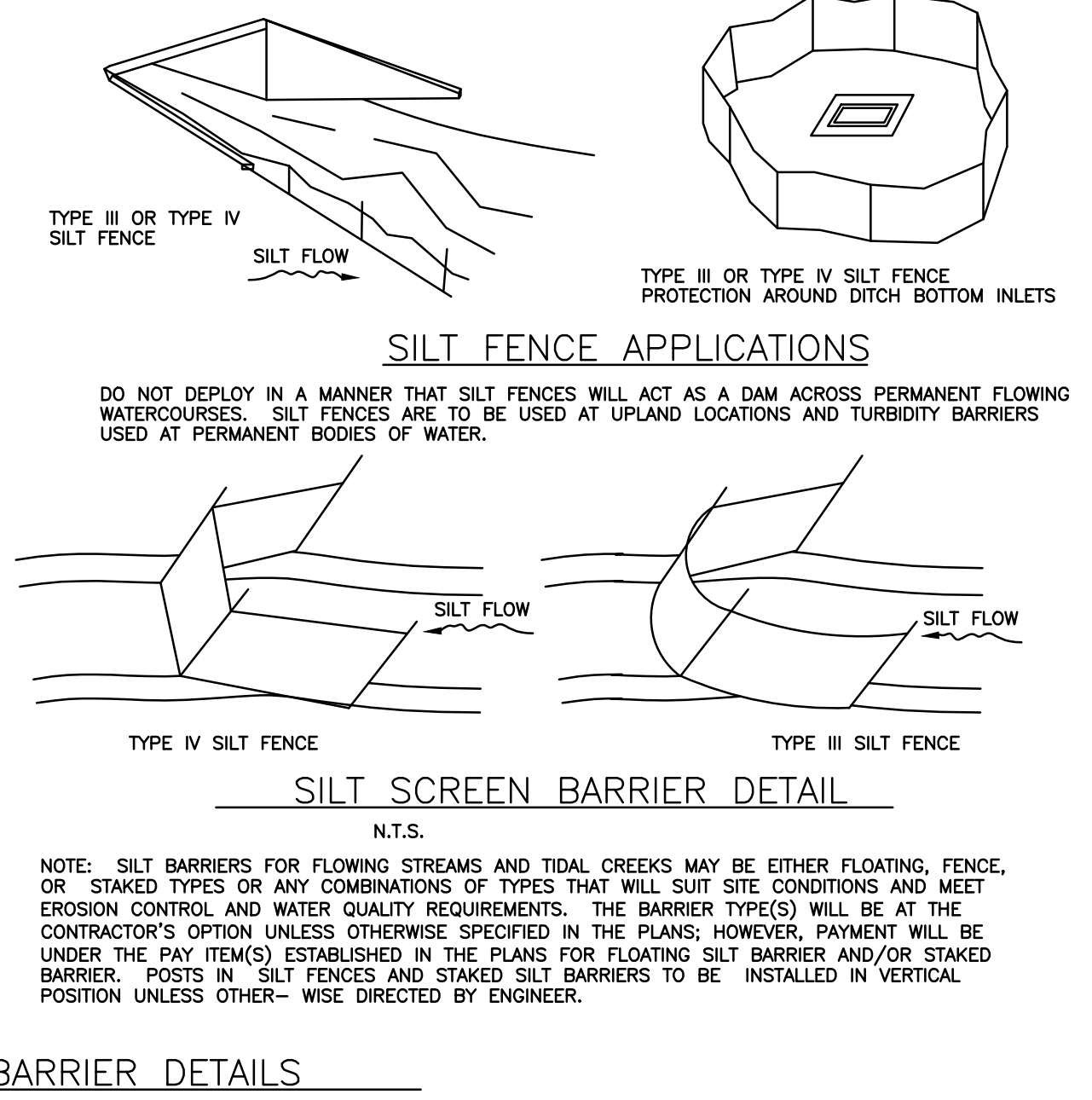
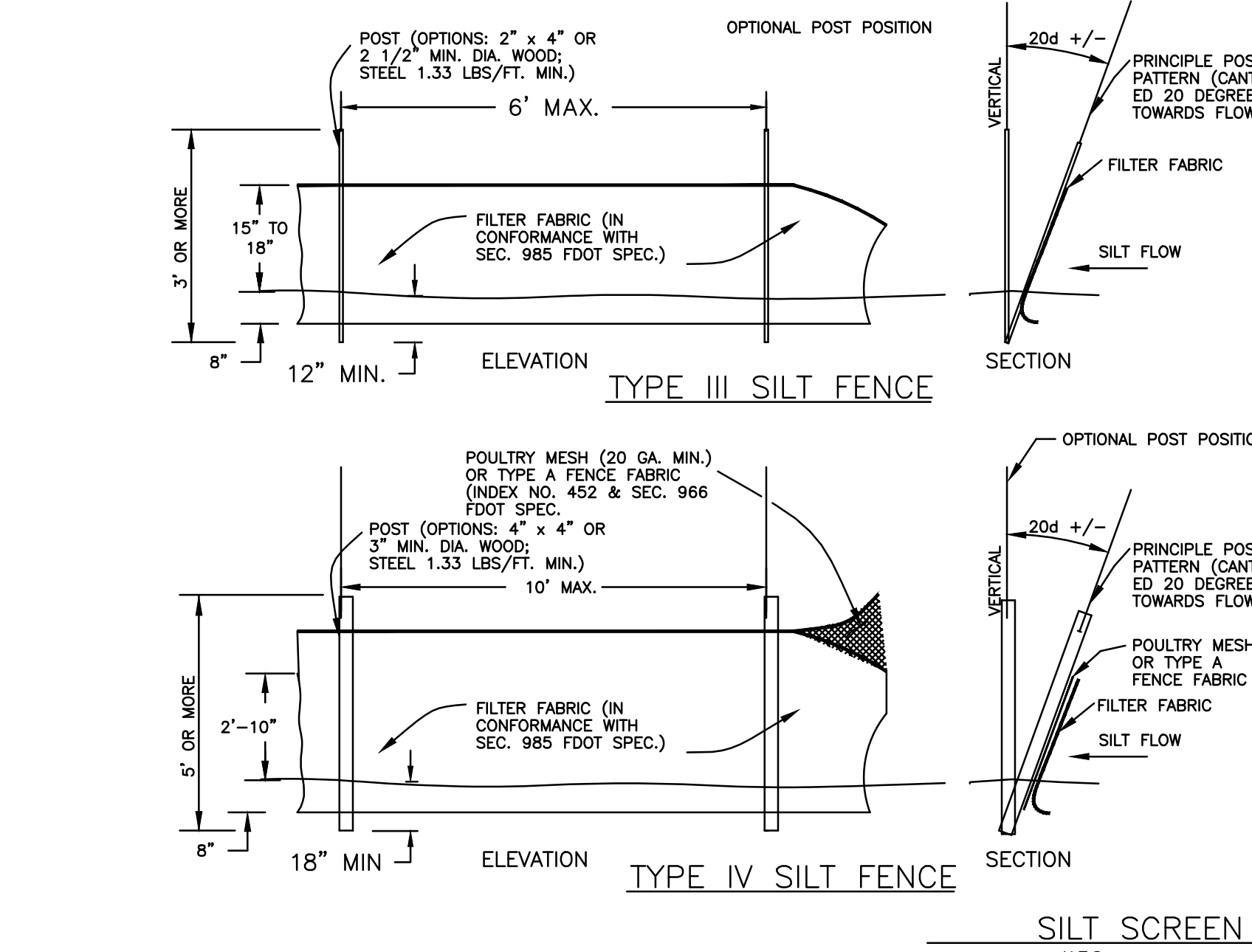
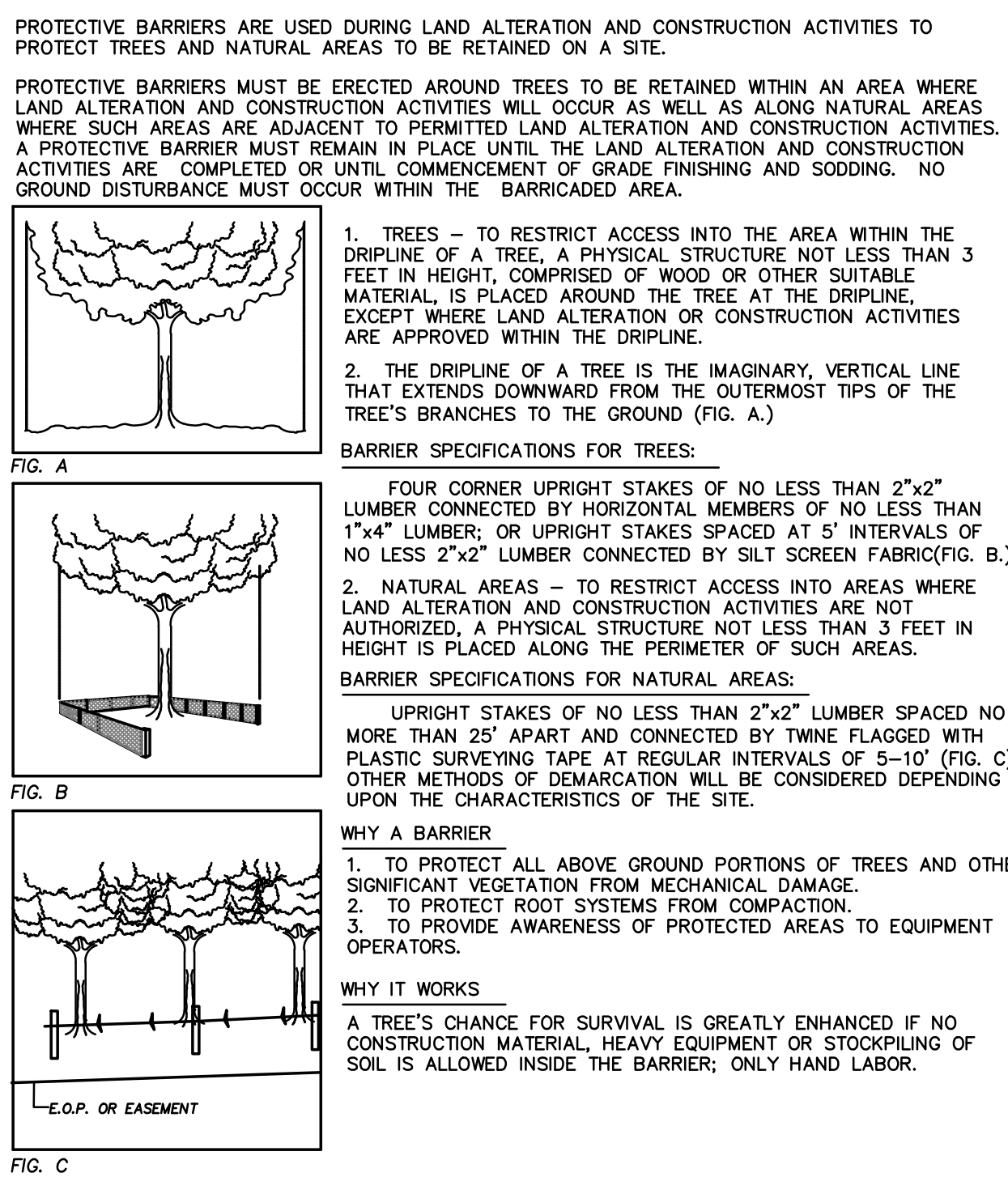
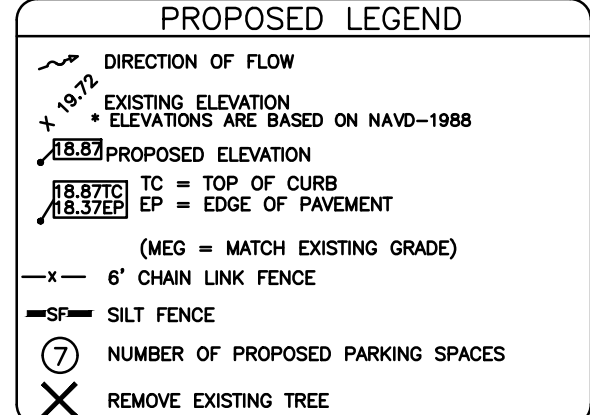


LEGEND	
S.	SET
L.F.	FOUND
U.P.	IRON ROD
C.M.	CONCRETE MONUMENT
A/C	AIR CONDITIONER
AC.	ACRES
B.P.D.	BACKFLOW PREVENTION DEVICE
BOLL.	BOLLARD
CHORD	CHORD
C.	CALCULATED
C.B.W.	CATCH BASIN
CHB	CHORD BEARING
CLF	CHAIN LINK FENCE
CMP	CORRUGATED METAL PIPE
C.O.	CLEANOUT
CONC.	CONCRETE
CS	CONCRETE SLAB
C.T.	CURB TIE
C.V.	CABLE TELEVISION
DEP.	DEPARTMENT OF ENVIRONMENTAL PROTECTION
EL.	ELEVATION
(A)	FIELD MEASUREMENT
F.F.	FINISHED FLOOR
F.P.A.	FIRE HYDRANT ASSEMBLY
F.P.C.	FLORIDA POWER CORPORATION
GI	GRATE INLET
GV	GAS VALVE
GM	GAS METER
GV	GATE VALVE
GW	GUY WIRE
INVT.	INVERT
LF	LOWEST FLOOR ELEVATION
LP	LIGHT POLE
(M)	MEASURED
MAS	MASONRY
MES	METERED END SECTION
MH	MANHOLE
M.H.W.L.	MEAN HIGH WATER LINE
N.V.D.	NATIONAL GEODETIC VERTICAL DATUM
O/H	OVERHEAD WIRES
O.R.	OFFICIAL RECORD
P.B.	PLAT BOOK
P.G.	PAGE/PAGES
P.O.B.	POINT OF BEGINNING
P.P.M.	PERMANENT REFERENCE MONUMENT
PVC	POLYVINYL CHLORIDE
R	RADIUS
(R)	RECORD
R.C.P.	REINFORCED CONCRETE PIPE
R.W.	RECLAIMED WATER
RNG.	RANGE
R/W	RIGHT-OF-WAY
SAN	SANITARY
S.O.D.	SANITARY CLEAN-OUT
SEC.	SECTION
S.F.	SQUARE FEET
T.B.M.	TEMPORARY BENCHMARK
T.O.P.	TOP OF BEAM
T.O.S.	TOP OF SLOPE
TRANS.	TRANSFORMER
TWP	TOWNSHIP
UP	UTILITY POLE
WF	WOOD FENCE
WM	WATER METER



Feb 20, 2025 - 1:25pm X:\2019\2019-74 Military Court of Honor, 911 Memorial\Engineering\2019-74E_SIP -Revised 2-11-25.dwg

REV.#	DATE	REVISION	BY	CHECKED

DEUEL & ASSOCIATES

CONSULTING ENGINEERS LAND SURVEYORS LAND PLANNERS

565 SOUTH HERCULES AVENUE
CLEARWATER, FL 33764
PHONE: 727.822.4151
WWW.DEUELENGINEERING.COM
CERTIFICATE OF AUTHORIZATION NUMBER 26320
LICENSED BUSINESS NUMBER 107

150TH AVE. - 911 MEMORIAL
EXISTING CONDITIONS/DEMO. &
SOIL EROSION CONTROL PLAN

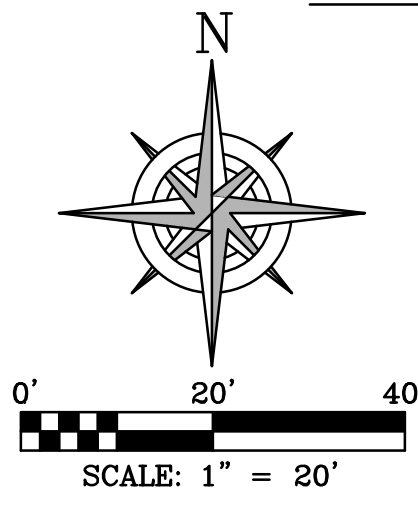
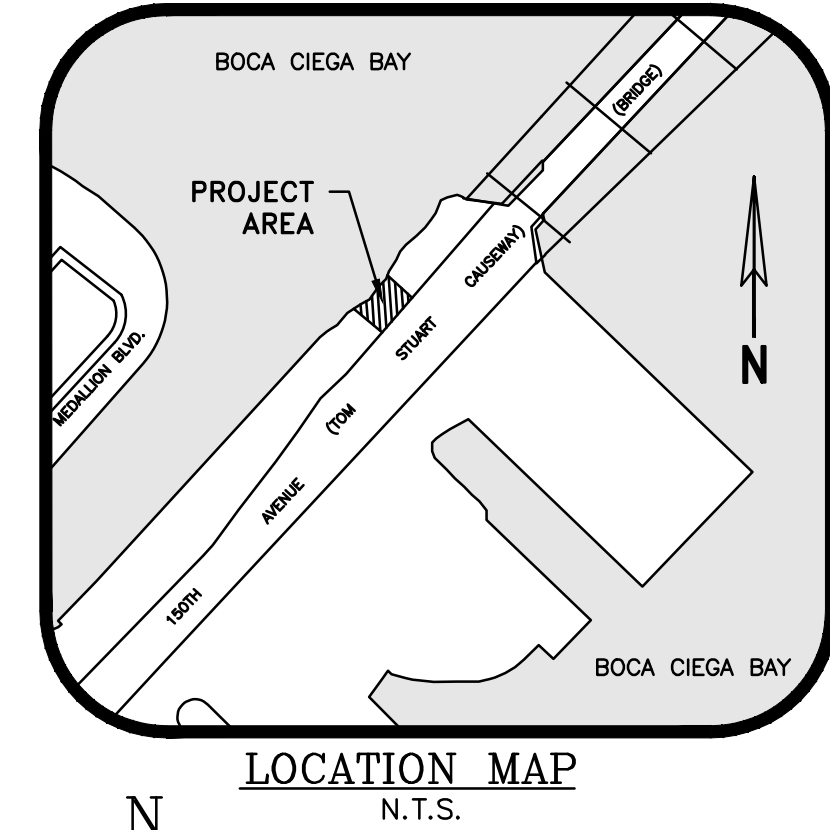
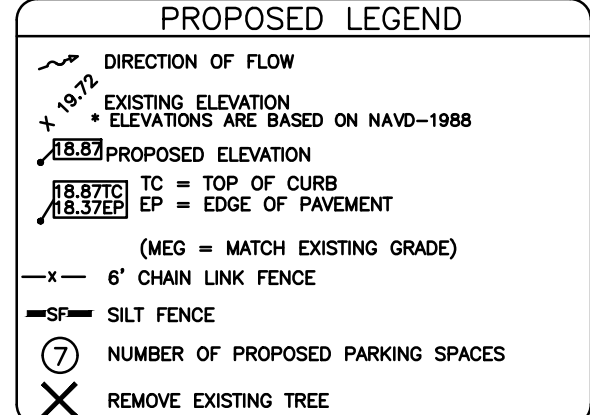
MADEIRA BEACH, PINELLAS COUNTY FLORIDA

I, ALBERT CARRIER, HEREBY CERTIFY AS A LICENSED PROFESSIONAL ENGINEER, REGISTERED IN ACCORDANCE WITH FLORIDA STATUTE 471 (481) THAT THE ABOVE PROJECT'S SITE AND/OR CONSTRUCTION PLANS, TO THE BEST OF MY KNOWLEDGE, INFORMATION AND BELIEF, WILL MEET APPLICABLE DESIGN CRITERIA SPECIFIED BY CITY MUNICIPAL ORDINANCE, STATE AND FEDERAL ESTABLISHED STANDARDS. I UNDERSTAND THAT IT IS MY RESPONSIBILITY AS THE PROJECT'S PROFESSIONAL ENGINEER TO PERFORM A QUALITY ASSURANCE REVIEW OF THESE SUBMITTED PLANS.

WORK ORDER NO.	2019-74
DATE:	NOVEMBER 11, 2019
SCALE:	1" = 20'
SHEET NO.	1 OF 4

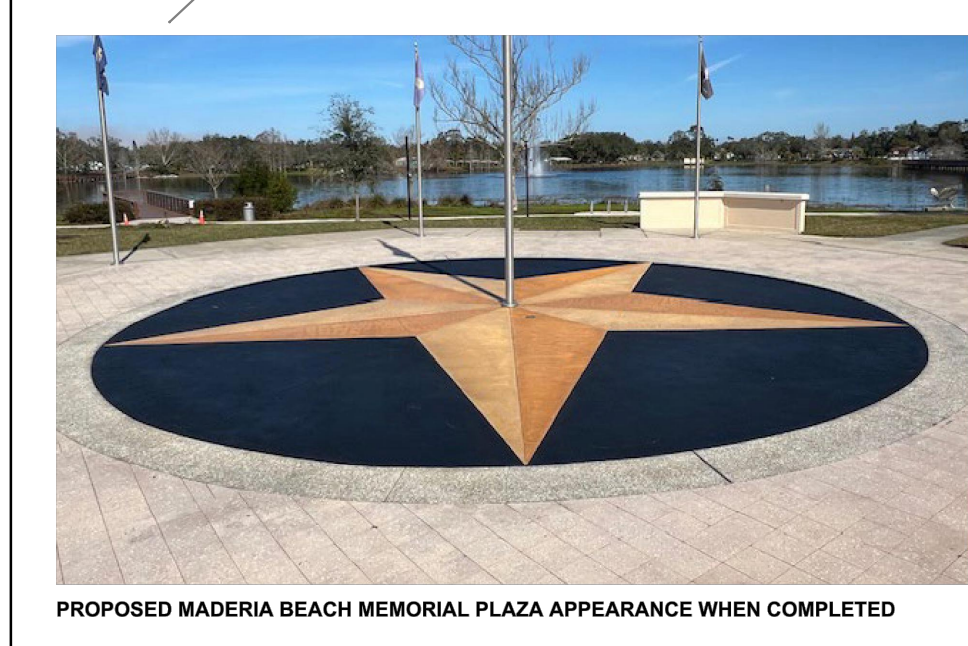
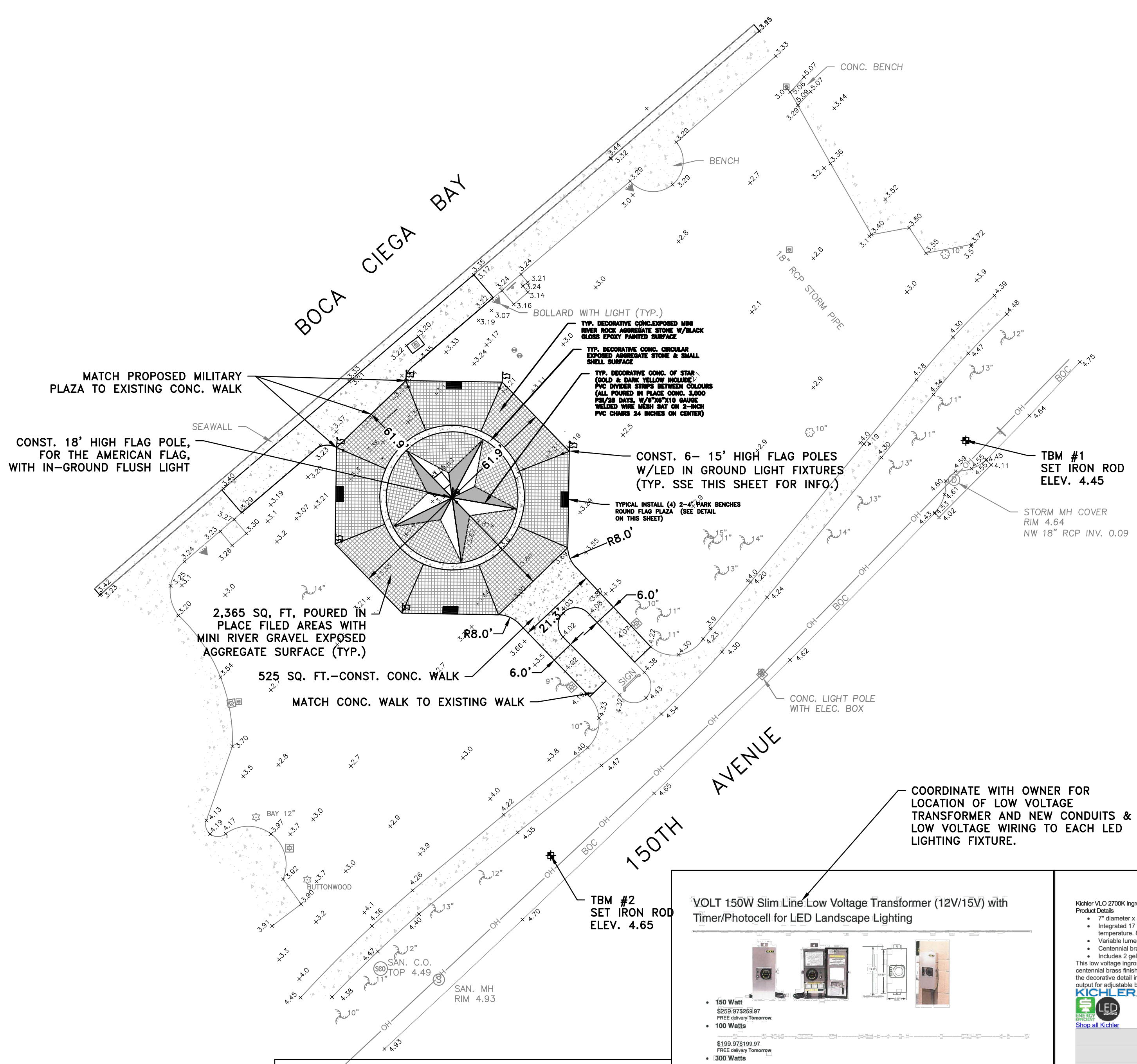
ALBERT P. CARRIER, P.E. 53990

LEGEND	
S.	SET
F.	FOUND
L.P.	IRON PIPE
L.P.	IRON PIPE
M&D	NAIL & DISK
C.M.	CONCRETE MONUMENT
A/C	AIR CONDITIONER
AC.	ACRES
B.F.P.D.	BACK FLOW PREVENTION DEVICE
BOLL.	BOLLARD
CHORD	CHORD
(C)	CALCULATED
CBW	CATCH BASIN
CHB	CONCRETE BLOCK WALL
CHD	CHORD BEARING
CLF	CHAIN LINK FENCE
CMP	CORRUGATED METAL PIPE
C.O.	CLEANOUT
CONC.	CONCRETE
CS	CONCRETE SLAB
C.T.	CURB TIE
CTV	CABLE TELEVISION
(D)	DEED
DEP.	DEPARTMENT OF ENVIRONMENTAL PROTECTION
EL.	ELEVATION
(E)	FIELD MEASUREMENT
FF	FINISHED FLOOR
FHA	FIRE HYDRANT ASSEMBLY
FLC	FLORIDA POWER CORPORATION
GI	GRATE INLET
GV	GAS VALVE
GM	GAS METER
GV	GATE VALVE
GW	GUY WIRE
INV.	INVERT
LF	LOWEST FLOOR ELEVATION
LP	LIGHT POLE
(M)	MEASURED
MAS	MASONRY
MES	METERED END SECTION
MH	MANHOLE
MHWL	MEAN HIGH WATER LINE
NVD	NATIONAL GEODETIC VERTICAL DATUM
O/H	OVERHEAD WIRES
O.R.	OFFICIAL RECORD
PL	PLAT BOOK
PG	PAGE/PAGES
POB	POINT OF BEGINNING
PRM	PERMANENT REFERENCE MONUMENT
PVC	POLYVINYL CHLORIDE
R	RADIUS
(R)	RECORD
RCP	REINFORCED CONCRETE PIPE
RCW	RECLAIMED WATER
RNG.	RANGE
R/W	RIGHT-OF-WAY
SAN	SANITARY
SOD	SANITARY CLEAN-OUT
SEC.	SECTION
SQ.	SQUARE FEET
TBM	TEMPORARY BENCHMARK
TOP	TOP OF BEAM
TOS	TOP OF SLOPE
TRNS	TRANSFORMER
TWP	TOWNSHIP
UP	UTILITY POLE
WF	WOOD FENCE
WM	WATER METER



CALL 811
SUNSHINE STATE
ONE CALL
OF FLORIDA
 www.call811.com
 (800) 432-4770
 MIN. 2 FULL BUSINESS DAYS
 BEFORE YOU EXCAVATE.

SITE DATA TABLE:	
SITE LOCATION: 150th AVENUE JUST SOUTH OF TOM STUART CAUSEWAY BRIDGE MADEIRA BEACH, FLORIDA	
PROPERTY OWNER: CITY OF MADEIRA BEACH 300 MUNICIPAL DR. MADEIRA BEACH, FL. 33708 ATTN: WALTER PIERCE	CIVIL ENGINEER & SURVEYOR: DEUEL & ASSOCIATES 565 SOUTH HERCULES AVENUE CLEARWATER, FL 33764 (727) 822-4151-TEL (727) 821-7255-FAX
CONTACT: JONATHAN EVANS PH: (727) 391-9951	
FLOOD ZONE: AE - EL. 10 MAP PANEL ID: 12103C0191G REVISED MAP: SEPTEMBER 3, 2003	
ZONING: P-SP PROPOSED USE: PARK FUTURE LAND USE: PLANNED DEVELOPMENT-MIXED USE PIN: 09/31/15/0000/140/0410	



VOLT 150W Slim Line Low Voltage Transformer (12V/15V) with Timer/Photocell for LED Landscape Lighting

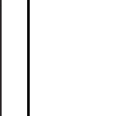
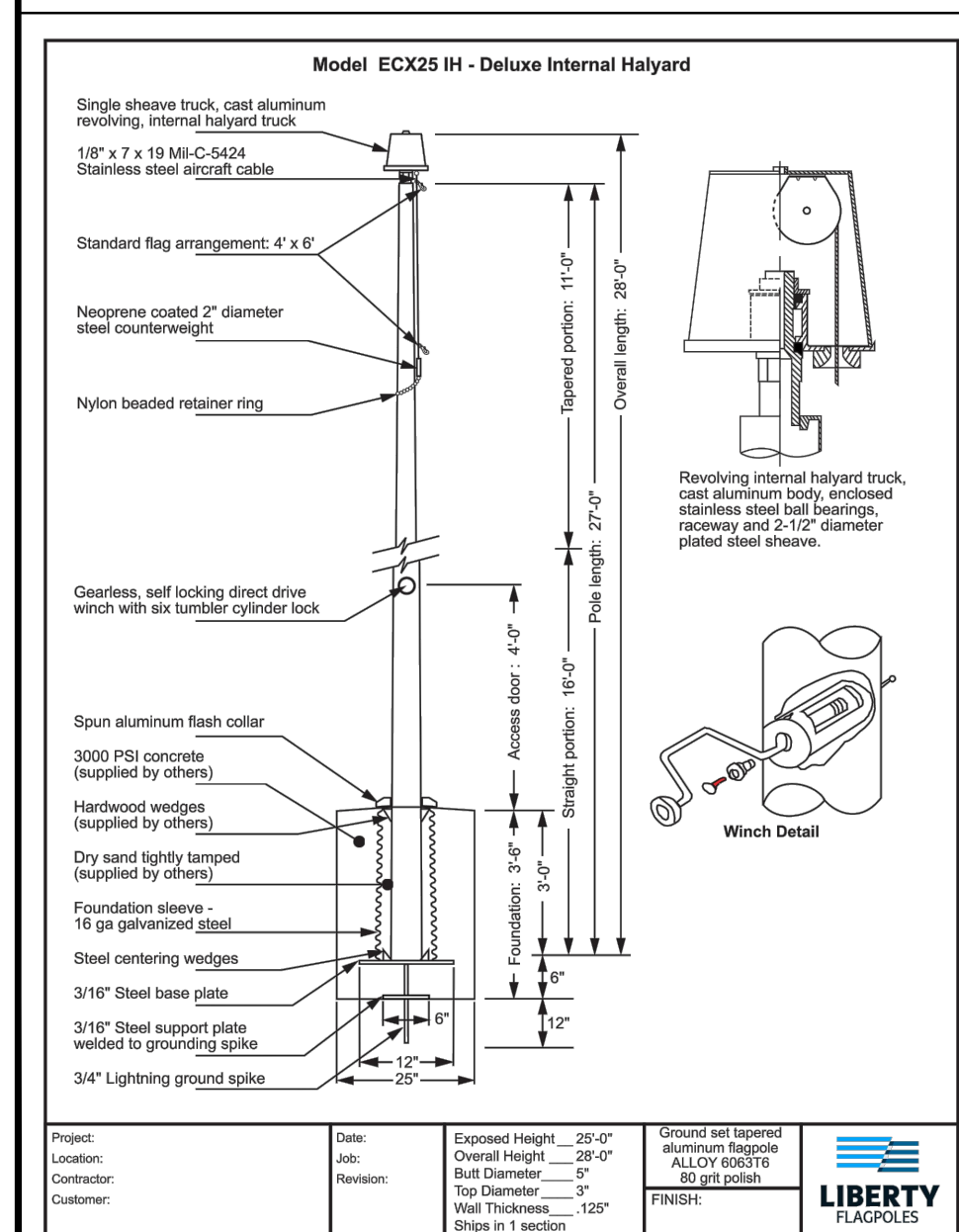
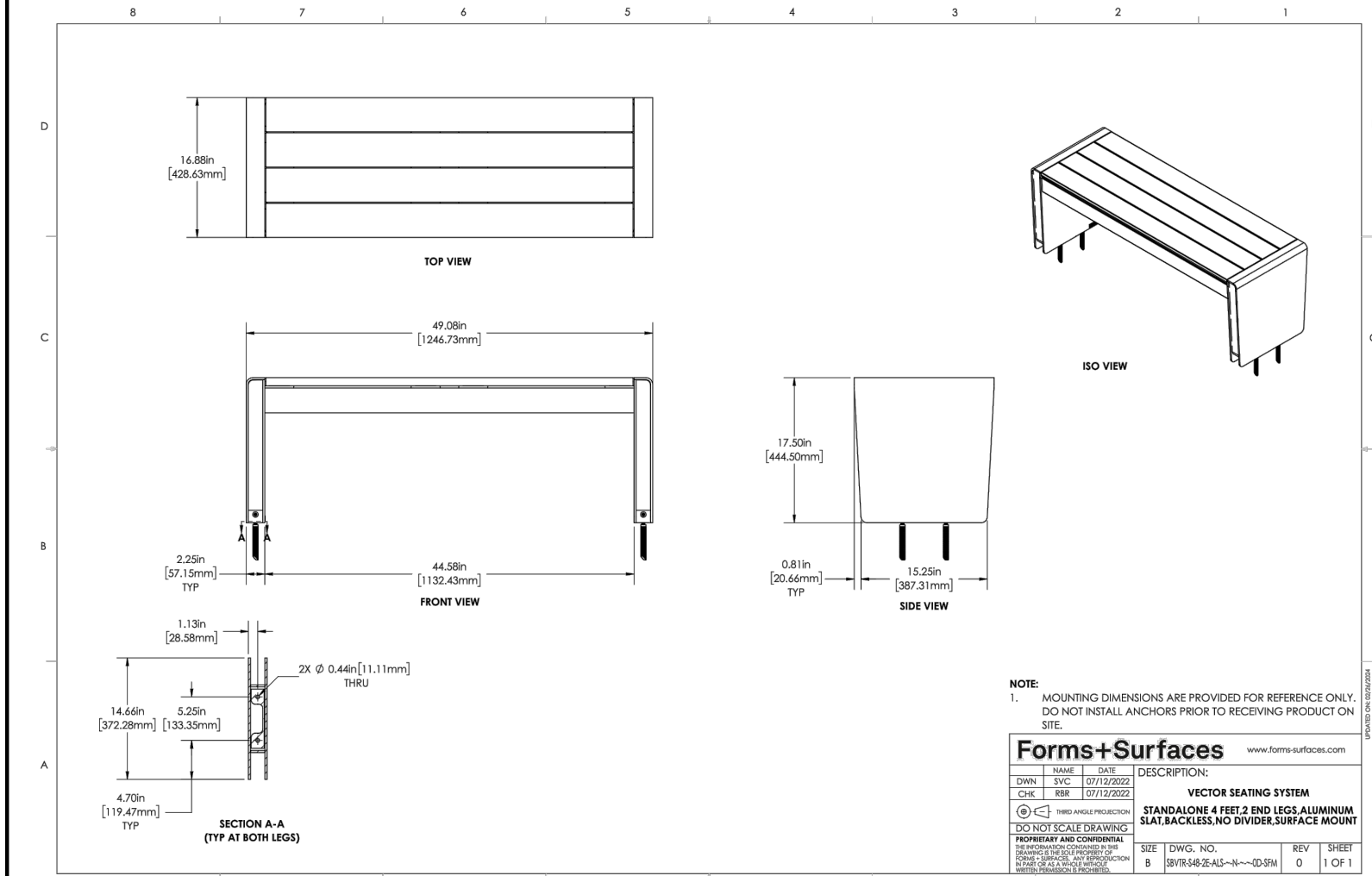
• 150 Watt 8258 972918 87 FREE delivery Transformer	• 100 Watts 1599 97199 97 FREE delivery Transformer	• 300 Watts
Brand: VOLT		
Power Source: Coded Electric		
Product Dimensions: 3.7"D x 5.5"W x 15.33"H		
Mounting Type: Wall Mount		
Specification Met: ETL		

About this item

- LOW PROFILE MAGNETIC TRANSFORMER** - To make this transformer slimmer, lighter and simpler to install, we eliminated unnecessary voltage taps. Just use the 12V and 15V taps; that's all you need for a small to medium sized LED landscape lighting system. The 15V tap enables you to compensate for voltage loss on a long or heavily loaded wire run. Note: Never load any transformer to more than 80 percent of its capacity (120W for this model).
- MODULAR TIMER WITH PHOTOCELL INCLUDED** - Visible through the housing window, this timer can be set for simple dusk-to-dawn operation or set to turn off after a certain number of hours. The photocell built into the timer.
- EASY INSTALL** - The clamp-type terminal blocks are impressively easy to use - taking seconds to connect - compared to many minutes of frustrating work for standard terminal blocks. Just insert the stripped wire and close the clamp! Accepts up to 10-gauge wire.
- HIGH PERFORMANCE** - This low voltage transformer's laminated core allows for more reliable, efficient, cooler and quieter operation than comparable EI laminated types. It's also superior to electronic transformers, which may not be compatible with LED circuits, suffer from extensive voltage loss, and are subject to overheating and premature failure.
- LIFETIME WARRANTY** - With an industry-leading warranty, this Slim Line Transformer is designed for a lifetime of worry-free use - we guarantee it. The core, stainless steel enclosure and all electrical components are backed by our lifetime warranty.

Kichler VLD 2700K Inground LED Low Voltage Landscape Light

Style	Contemporary
Finish	Bronze
Type	Low Voltage
Color	Brown
Brand	Kichler
Product Attributes	Height: 8.00 inches Depth: 7.00 inches
Manufacturer Number	1625CIBR27



REV.#	DATE	REVISION	BY	CHECKED

DESIGN: APC
 DRAWN: PJL
 CHECKED: BAB

DEUEL & ASSOCIATES

CONSULTING ENGINEERS LAND SURVEYORS LAND PLANNERS

565 SOUTH HERCULES AVENUE
 CLEARWATER, FL 33764
 PHONE: 727.822.4151
 WWW.DEUJENGINERING.COM
 CERTIFICATE OF AUTHORIZATION NUMBER 26320
 LICENSED BUSINESS NUMBER 107

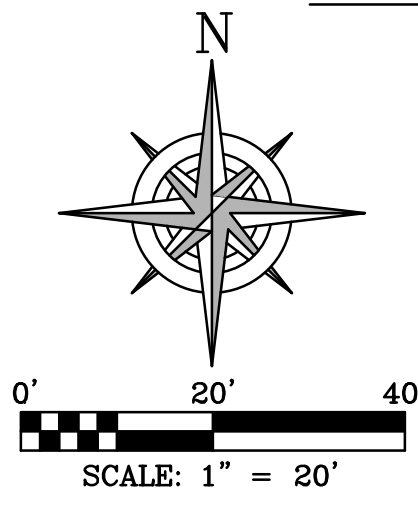
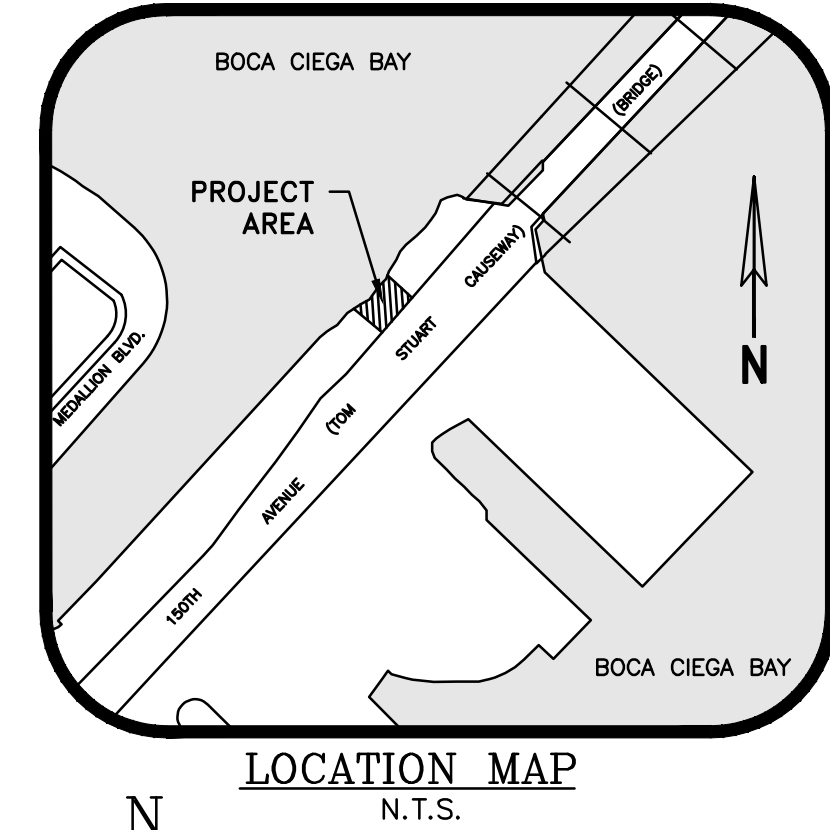
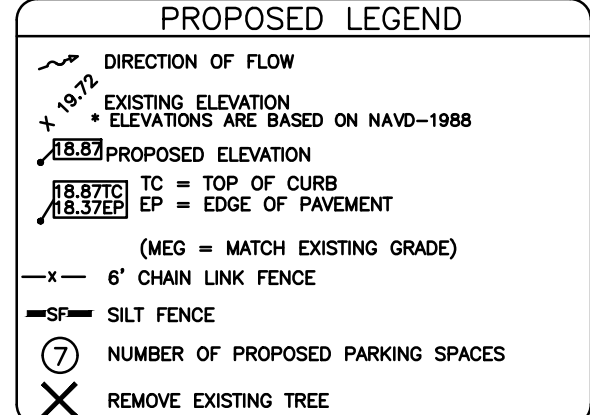
150TH AVE. - 911 MEMORIAL
 SITE PLAN
 MADEIRA BEACH, PINELLAS COUNTY FLORIDA

I, ALBERT CARRIER, HEREBY CERTIFY AS A LICENSED PROFESSIONAL ENGINEER, REGISTERED IN ACCORDANCE WITH FLORIDA STATUTE 471 (481) THAT THE ABOVE PROJECT'S SITE AND/OR CONSTRUCTION PLANS, TO THE BEST OF MY KNOWLEDGE, INFORMATION AND BELIEF, WILL MEET APPLICABLE DESIGN CRITERIA SPECIFIED BY CITY MUNICIPAL, ORDINANCE, STATE AND FEDERAL ESTABLISHED STANDARDS. I UNDERSTAND THAT IT IS MY RESPONSIBILITY AS THE PROJECT'S PROFESSIONAL ENGINEER TO PERFORM A QUALITY ASSURANCE REVIEW OF THESE SUBMITTED PLANS.

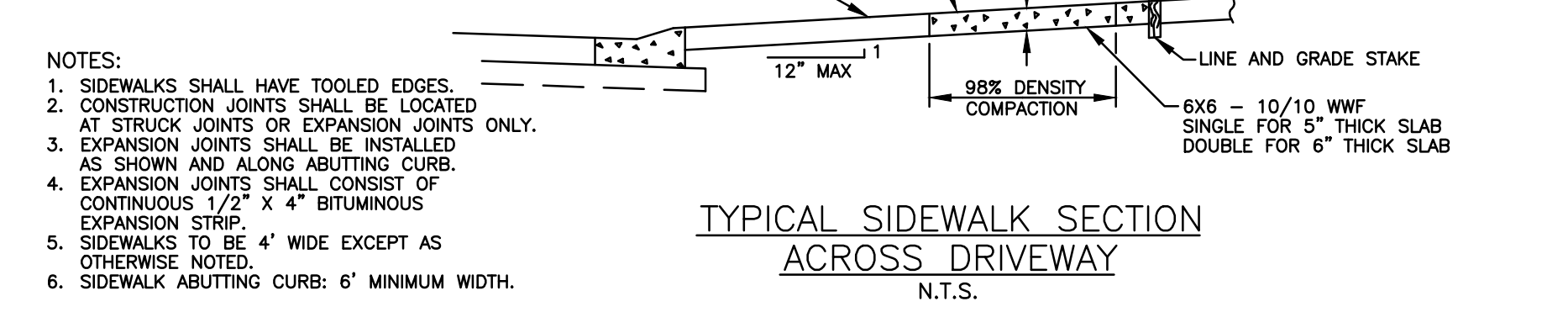
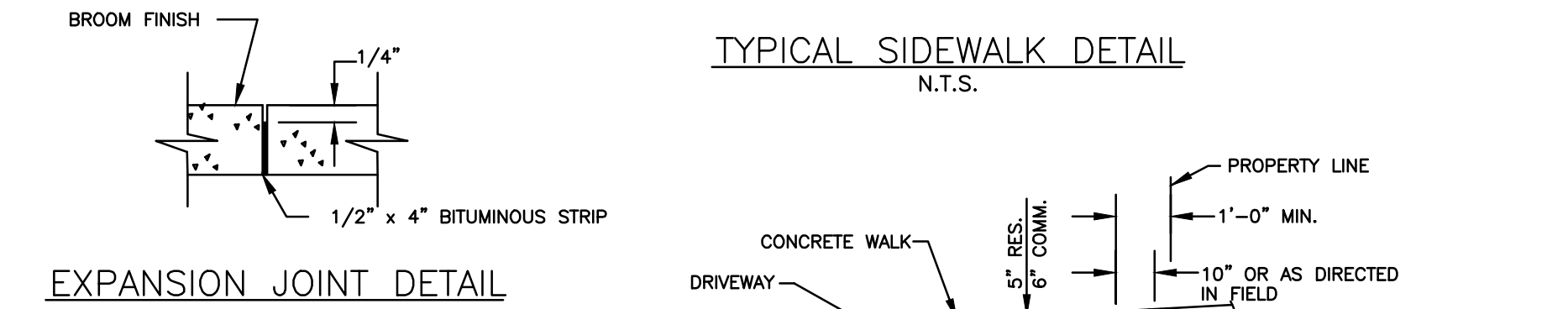
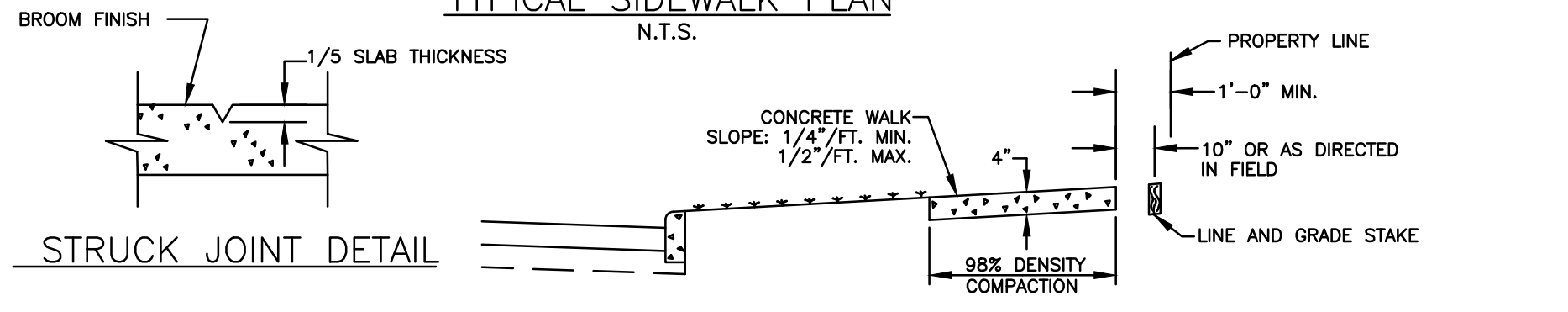
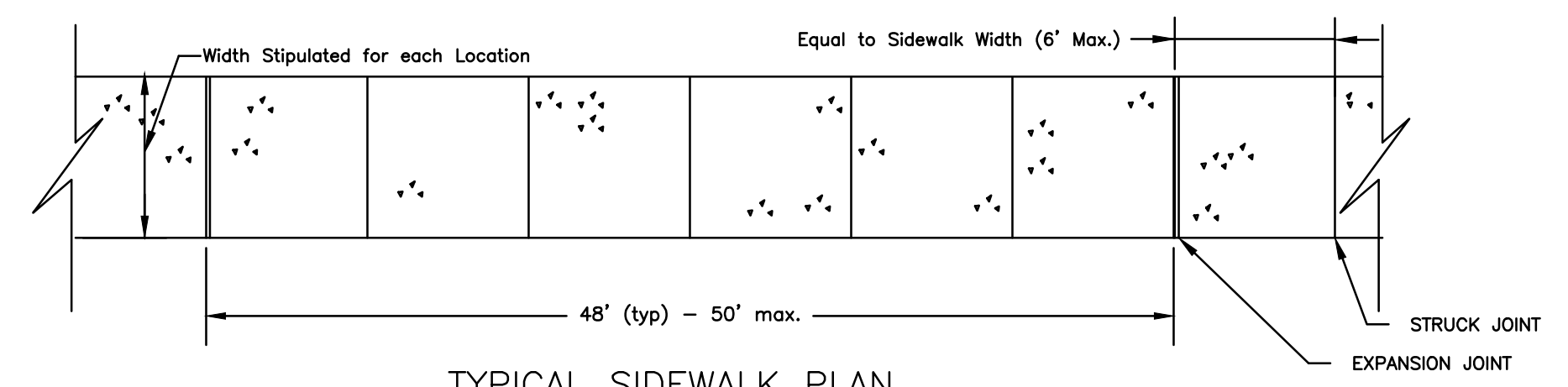
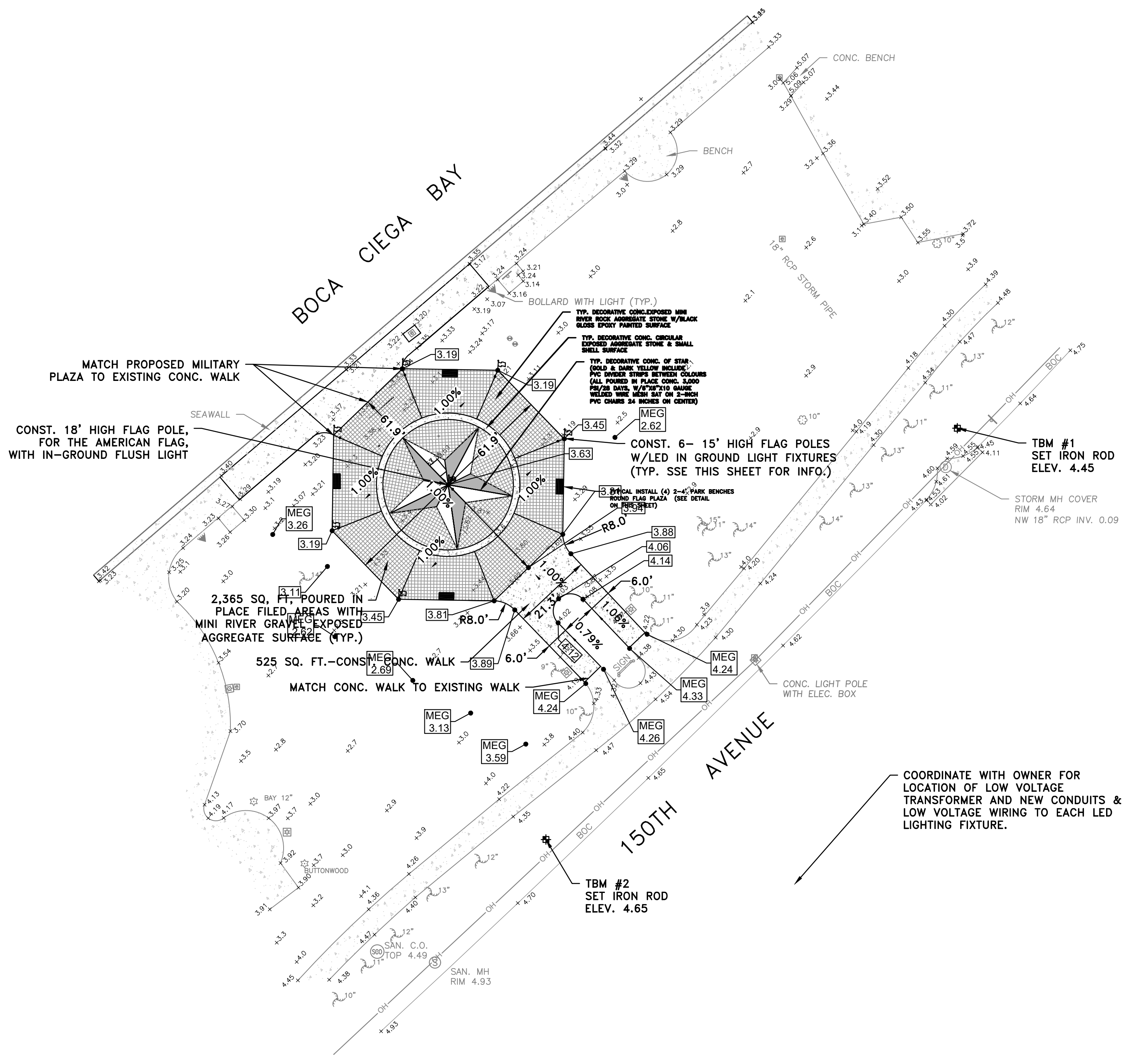
WORK ORDER NO.	2019-74
DATE	NOVEMBER 11, 2019
SCALE	1" = 20'
SHEET NO.	2 OF 4

Feb 20, 2020 - 1:26pm X:\2019\2019-74 Military Court of Honor, 911 Memorial\Engineering\Main\2019-74E_Sp - Revised 2-11-2020

LEGEND	
S.	SET
F.	FOUND
I.P.	IRON PIPE
N&D	NAIL & DISK
C.M.	CONCRETE MONUMENT
A/C	AIR CONDITIONER
AC.	ACRES
B.P.D.	BACK FLOW PREVENTION DEVICE
BOLL.	BOLLARD
CHORD	CHORD
(C)	CALCULATED
CBW	CATCH BASIN
CHB	CONCRETE BLOCK WALL
CHORD	CHORD BEARING
CLF	CHAIN LINK FENCE
CMP	CORRUGATED METAL PIPE
C.O.	CLEANOUT
CONC.	CONCRETE
CS	CONCRETE SLAB
CURB	CURB
C.V.	CABLE TELEVISION
DEED	DEED
DEP.	DEPARTMENT OF ENVIRONMENTAL PROTECTION
EL.	ELEVATION
(F)	FIELD MEASUREMENT
FF	FINISHED FLOOR
FHA	FIRE HYDRANT ASSEMBLY
FPC	FLORIDA POWER CORPORATION
GI	GRATE INLET
GV	GAS VALVE
GM	GAS METER
GV	GATE VALVE
GW	GUY WIRE
INV.	INVERT
LF	LOWEST FLOOR ELEVATION
LP	LIGHT POLE
(M)	MEASURED
MAS	MASONRY
MES	METERED END SECTION
MH	MANHOLE
MHWL	MEAN HIGH WATER LINE
NVD	NATIONAL GEODETIC VERTICAL DATUM
O/H	OVERHEAD WIRES
O.R.	OFFICIAL RECORD
PL	PLAT BOOK
PG	PAGE/PAGES
POB	POINT OF BEGINNING
PRM	PERMANENT REFERENCE MONUMENT
PVC	POLYVINYL CHLORIDE
R	RADIUS
(R)	RECORD
RCP	REINFORCED CONCRETE PIPE
RCW	RECLAIMED WATER
RNG	RANGE
R/W	RIGHT-OF-WAY
SAW	SANITARY
SOD	SANITARY CLEAN-OUT
SEC.	SECTION
SQ.	SQUARE FEET
TBM	TEMPORARY BENCHMARK
TOP	TOP OF BEAM
TOS	TOP OF SLOPE
TRANS.	TRANSFORMER
TWP	TOWNSHIP
UP	UTILITY POLE
WF	WOOD FENCE
WM	WATER METER



CALL 811
SUNSHINE STATE
ONE CALL
OF FLORIDA
 www.callsunshine.com
 (800) 432-4770
 MIN. 2 FULL BUSINESS DAYS
 BEFORE YOU EXCAVATE.



- NOTES:
- SIDEWALKS SHALL HAVE TOOLED EDGES.
 - CONSTRUCTION JOINTS SHALL BE LOCATED AT STRUCK JOINTS OR EXPANSION JOINTS ONLY.
 - EXPANSION JOINTS SHALL BE INSTALLED AS SHOWN AND ALONG ABUTTING CURB.
 - EXPANSION JOINTS SHALL CONSIST OF CONTINUOUS 1/2" X 4" BITUMINOUS EXPANSION STRIP.
 - SIDEWALKS TO BE 4' WIDE EXCEPT AS OTHERWISE NOTED.
 - SIDEWALK ABUTTING CURB: 6' MINIMUM WIDTH.

COORDINATE WITH OWNER FOR LOCATION OF LOW VOLTAGE TRANSFORMER AND NEW CONDUITS & LOW VOLTAGE WIRING TO EACH LED LIGHTING FIXTURE.

Feb 20, 2025 - 1:25pm X:\2019\2019-74 Military Court of Honor, 911 Memorial\Engineering\2019-74E SP - Revised 2-11-25.dwg

REV.#	DATE	REVISION	BY	CHECKED

DEUEL & ASSOCIATES
 CONSULTING ENGINEERS LAND SURVEYORS LAND PLANNERS

565 SOUTH HERCULES AVENUE
 CLEARWATER, FL 33764
 PHONE: 727.822.4151
 WWW.DEUELENGINEERING.COM
 CERTIFICATE OF AUTHORIZATION NUMBER 26320
 LICENSED BUSINESS NUMBER 107

150TH AVE. - 911 MEMORIAL
PAVING, GRADING & DRAINAGE PLAN
 MADEIRA BEACH, PINELLAS COUNTY FLORIDA

I, ALBERT CARRIER, HEREBY CERTIFY AS A LICENSED PROFESSIONAL ENGINEER, REGISTERED IN ACCORDANCE WITH FLORIDA STATUTE 471 (481) THAT THE ABOVE PROJECT'S SITE AND/OR CONSTRUCTION PLANS, TO THE BEST OF MY KNOWLEDGE, INFORMATION AND BELIEF, WILL MEET APPLICABLE DESIGN CRITERIA SPECIFIED BY CITY MUNICIPAL ORDINANCE, STATE AND FEDERAL ESTABLISHED STANDARDS. I UNDERSTAND THAT IT IS MY RESPONSIBILITY AS THE PROJECT'S PROFESSIONAL ENGINEER TO PERFORM A QUALITY ASSURANCE REVIEW OF THESE SUBMITTED PLANS.

WORK ORDER NO.	2019-74
DATE	NOVEMBER 11, 2019
SCALE	1" = 20'
SHEET NO.	3 OF 4

- 1. ALL RIGHT-OF-WAY INSTALLATIONS MUST BE IN ACCORDANCE WITH PRACTICES REFERENCED IN THE STATE OF FLORIDA UTILITIES ACCOMMODATIONS MANUAL.
2. ALL DESIGN AND CONSTRUCTION MUST CONFORM TO THE MINIMUM STANDARDS SET DOWN IN PINELLAS COUNTY LAND DEVELOPMENT, ZONING AND/OR RELATED ORDINANCES, AND MINIMUM TESTING FREQUENCY REQUIREMENTS.
3. LOCATIONS, ELEVATIONS, AND DIMENSIONS OF EXISTING UTILITIES, STRUCTURES, AND OTHER FEATURES ARE SHOWN ACCORDING TO THE BEST INFORMATION AVAILABLE AT THE TIME OF PREPARATION OF THESE PLANS...

- 1. ALL DELETERIOUS SUBSTANCE MATERIAL, (I.E. MUCK, PEAT, BURIED DEBRIS), IS TO BE EXCAVATED IN ACCORDANCE WITH THESE PLANS, OR AS DIRECTED BY THE OWNER'S ENGINEER, OR OWNER'S SOIL TESTING COMPANY. DELETERIOUS MATERIAL IS TO BE STOCKPILED OR REMOVED FROM THE SITE AS DIRECTED BY THE OWNER. EXCAVATED AREAS ARE TO BE BACKFILLED WITH APPROVED MATERIALS AND COMPACTED AS SHOWN ON THESE PLANS.
2. THE CONTRACTOR SHALL BE RESPONSIBLE FOR PROTECTING EXCAVATIONS AGAINST COLLAPSE AND WILL PROVIDE BRACING, SHEETING, OR SHORING, AS NECESSARY. TRENCHES SHALL BE KEPT DRY WHILE PIPE AND APPURTENANCES ARE BEING PLACED. DEWATERING SHALL BE USED AS REQUIRED.
3. ALL STORM SEWER PIPE SHALL BE REINFORCED CONCRETE CLASS III (ASTM C-76) UNLESS OTHERWISE NOTED ON PLANS.

- (A) NEW OR RELOCATED, UNDERGROUND WATER MAINS CROSSING ANY EXISTING OR PROPOSED GRAVITY- OR VACUUM-TYPE SANITARY SEWER OR STORM SEWER SHALL BE LAID SO THE OUTSIDE OF THE WATER MAIN IS AT LEAST 12 INCHES ABOVE OR AT LEAST 12 INCHES BELOW THE OUTSIDE OF THE OTHER PIPELINE. HOWEVER, IT IS PREFERABLE TO LAY THE WATER MAIN ABOVE THE OTHER PIPELINE.
(B) NEW OR RELOCATED, UNDERGROUND WATER MAINS CROSSING ANY EXISTING OR PROPOSED PRESSURE-TYPE SANITARY SEWER, WASTEWATER OR STORMWATER FORCE MAIN, OR PIPELINE CONVEYING RECLAIMED WATER SHALL BE LAID SO THE OUTSIDE OF THE WATER MAIN IS AT LEAST 12 INCHES ABOVE OR BELOW THE OTHER PIPELINE. HOWEVER, IT IS PREFERABLE TO LAY THE WATER MAIN ABOVE THE OTHER PIPELINE.
(C) AT THE UTILITY CROSSINGS DESCRIBED IN PARAGRAPHS (A) AND (B) ABOVE, ONE FULL LENGTH OF WATER MAIN PIPE SHALL BE CENTERED ABOVE OR BELOW THE OTHER PIPELINE SO THE WATER MAIN JOINTS WILL BE AS FAR AS POSSIBLE FROM THE OTHER PIPELINE.

- 1. PRIOR TO ANY SITE CLEARING, ALL TREES SHOWN TO REMAIN ON THE CONSTRUCTION PLANS SHALL BE PROTECTED IN ACCORDANCE WITH THE LOCAL REGULATORY AGENCY'S TREE ORDINANCE AND DETAILS CONTAINED IN THESE PLANS. IT SHALL BE THE CONTRACTOR'S RESPONSIBILITY TO MAINTAIN THESE TREES IN GOOD CONDITION. NO TREES SHOWN TO REMAIN SHALL BE REMOVED WITHOUT WRITTEN APPROVAL FROM THE OWNER.
2. THE CONTRACTOR IS TO PREPARE THE SITE PRIOR TO BEGINNING ACTUAL CONSTRUCTION IN ACCORDANCE WITH THE SOILS TESTING REPORT. COPIES OF THE SOILS REPORT ARE AVAILABLE THROUGH THE OWNER OR THE SOILS TESTING COMPANY. QUESTIONS REGARDING SITE PREPARATION REQUIREMENTS DESCRIBED IN THE SOILS REPORT ARE TO BE DIRECTED TO THE SOILS TESTING COMPANY.
3. THE CONTRACTOR SHALL CLEAR AND GRUB, ONLY THOSE PORTIONS OF THE SITE, NECESSARY FOR CONSTRUCTION. DISTURBED AREAS WILL BE SEEDED, MULCHED, OR PLANTED WITH OTHER APPROVED LANDSCAPE MATERIAL IMMEDIATELY FOLLOWING CONSTRUCTION DRAWINGS.

- 1. WARNING: ABOVE-GROUND AND/OR UNDERGROUND UTILITIES MAY BE IN THE AREA OF THIS PROJECT. PROCEED WITH CAUTION: CALL 1-800-432-4770 48 HOURS PRIOR TO CONSTRUCTION.
2. ALL TRIMMING UNDERTAKEN ON A TREE PROTECTED BY THE PROVISIONS OF THE LAND DEVELOPMENT CODE SHALL BE PRUNED IN ACCORDANCE WITH THE AMERICAN NATIONAL STANDARDS INSTITUTE (ANSI) A-300 PRUNING STANDARDS.
3. A ONE HUNDRED PERCENT (100%) COVERAGE IRRIGATION SYSTEM SHALL BE INSTALLED FOR ALL LANDSCAPED AREAS. SHALLOW WELLS, OPEN SURFACE WATER BODIES, OR RECLAIMED WATER MUST BE USED AS A SOURCE OF IRRIGATION WATER. THE IRRIGATION SYSTEM SHALL NOT BE CONNECTED TO CITY, COUNTY, OR MUNICIPAL WATER SOURCES UNLESS IT CAN BE DEMONSTRATED THAT THESE OTHER SOURCES ARE NOT AVAILABLE.

Table with columns: REV#, DATE, REVISION, BY, CHECKED. Includes design and drawing information.

DEUEL & ASSOCIATES logo and contact information. Address: 565 SOUTH HERCULES AVENUE CLEARWATER, FL 33764. Phone: (727) 622-4151.

150TH AVE. - 911 MEMORIAL SPECIFICATIONS logo and address information. Address: MADEIRA BEACH, PINELLAS COUNTY FLORIDA.

Professional Engineer seal for Brian A. Barker. Text: I, BRIAN BARKER, HEREBY CERTIFY AS A LICENSED PROFESSIONAL ENGINEER, REGISTERED IN ACCORDANCE WITH FLORIDA STATUTE 471 (481) THAT THE ABOVE PROJECT'S SITE AND/OR CONSTRUCTION PLANS, TO THE BEST OF MY KNOWLEDGE, INFORMATION AND BELIEF, WILL MEET APPLICABLE DESIGN CRITERIA SPECIFIED BY CITY, COUNTY, OR MUNICIPAL ORDINANCES AND APPLICABLE STANDARDS.

Table with columns: WORK ORDER NO., DATE, SCALE, SHEET NO. OF. Values: 2019-74, NOVEMBER 11, 2019, N.T.S., 4 OF 4.