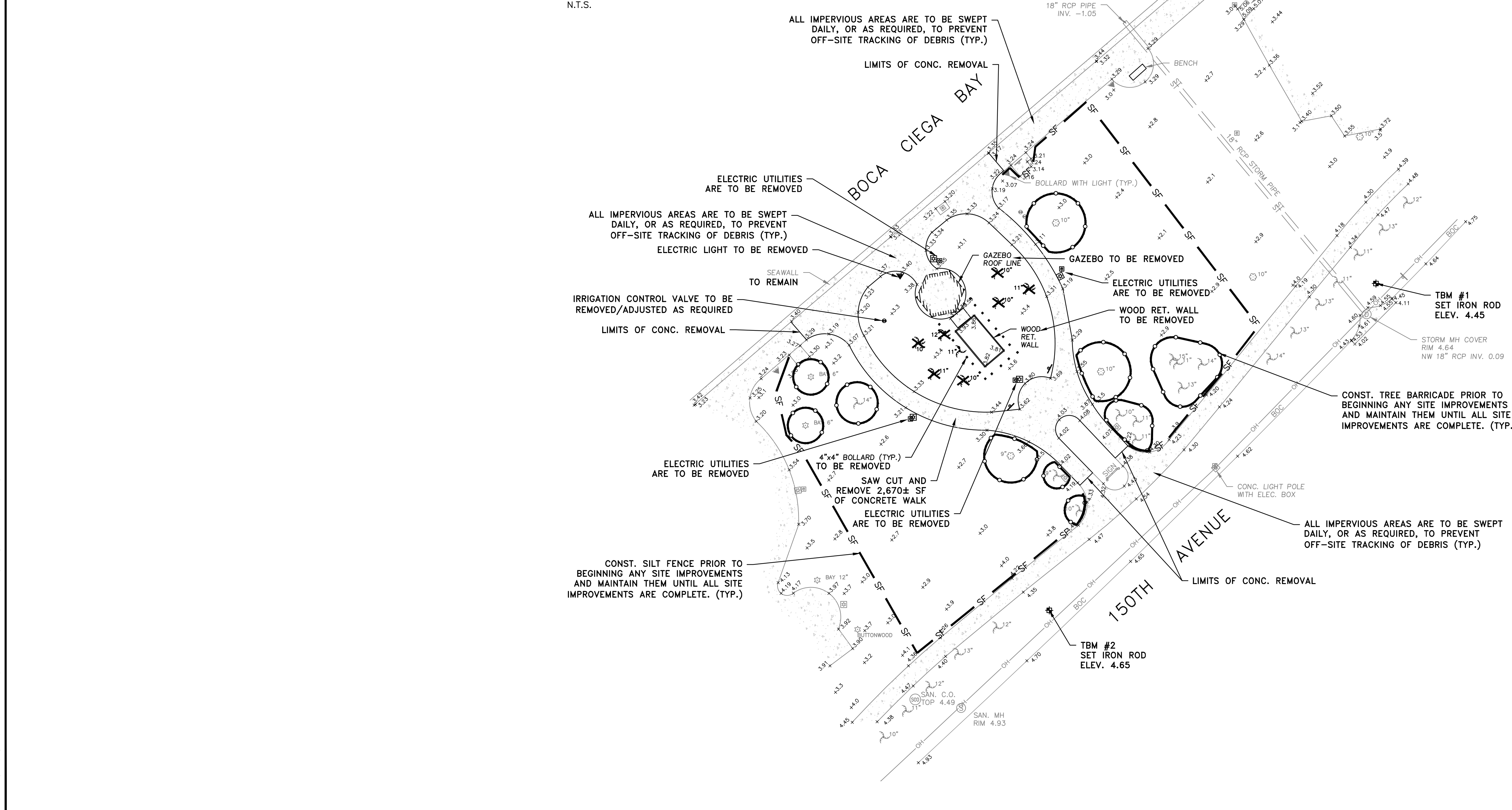
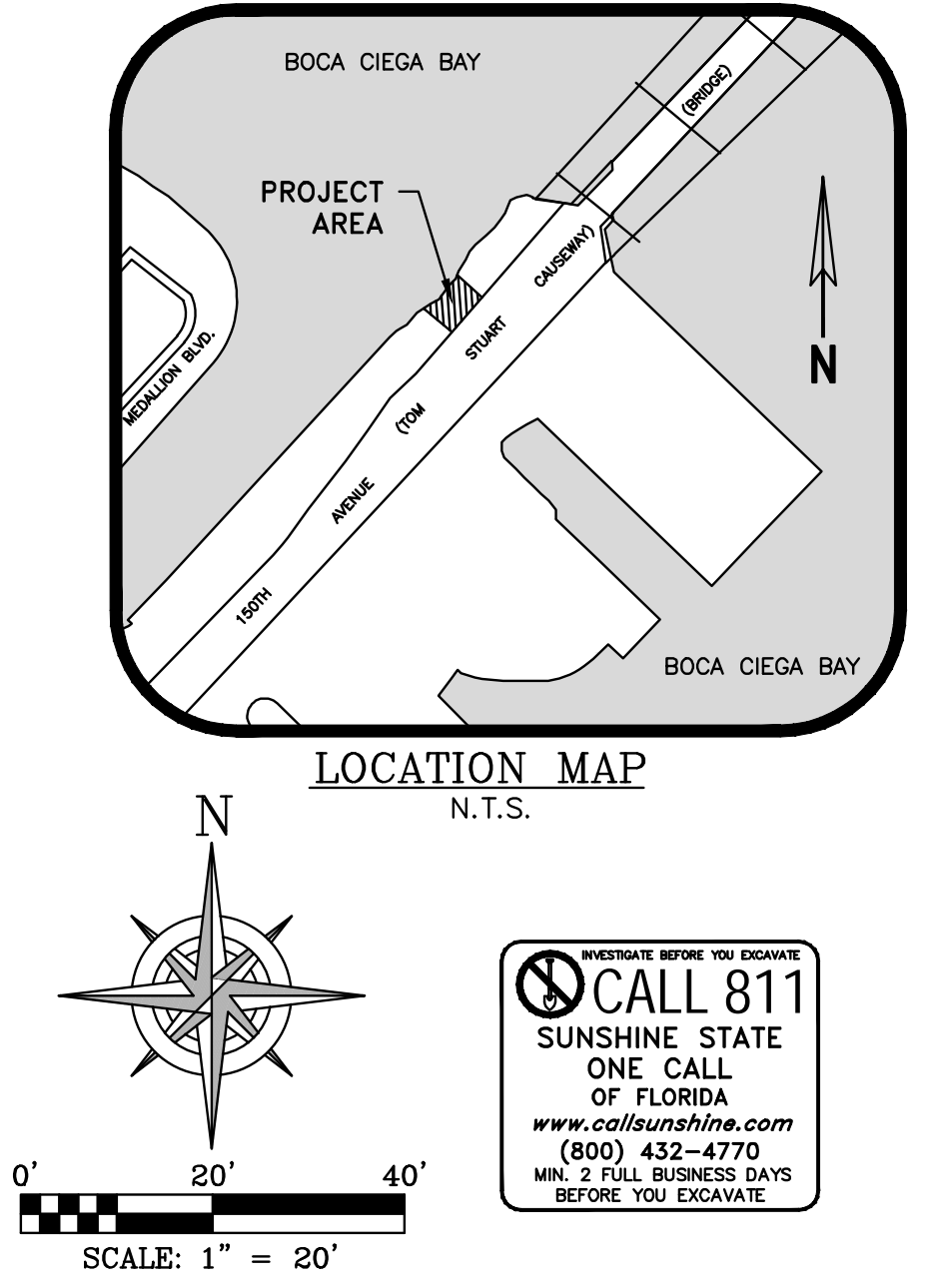
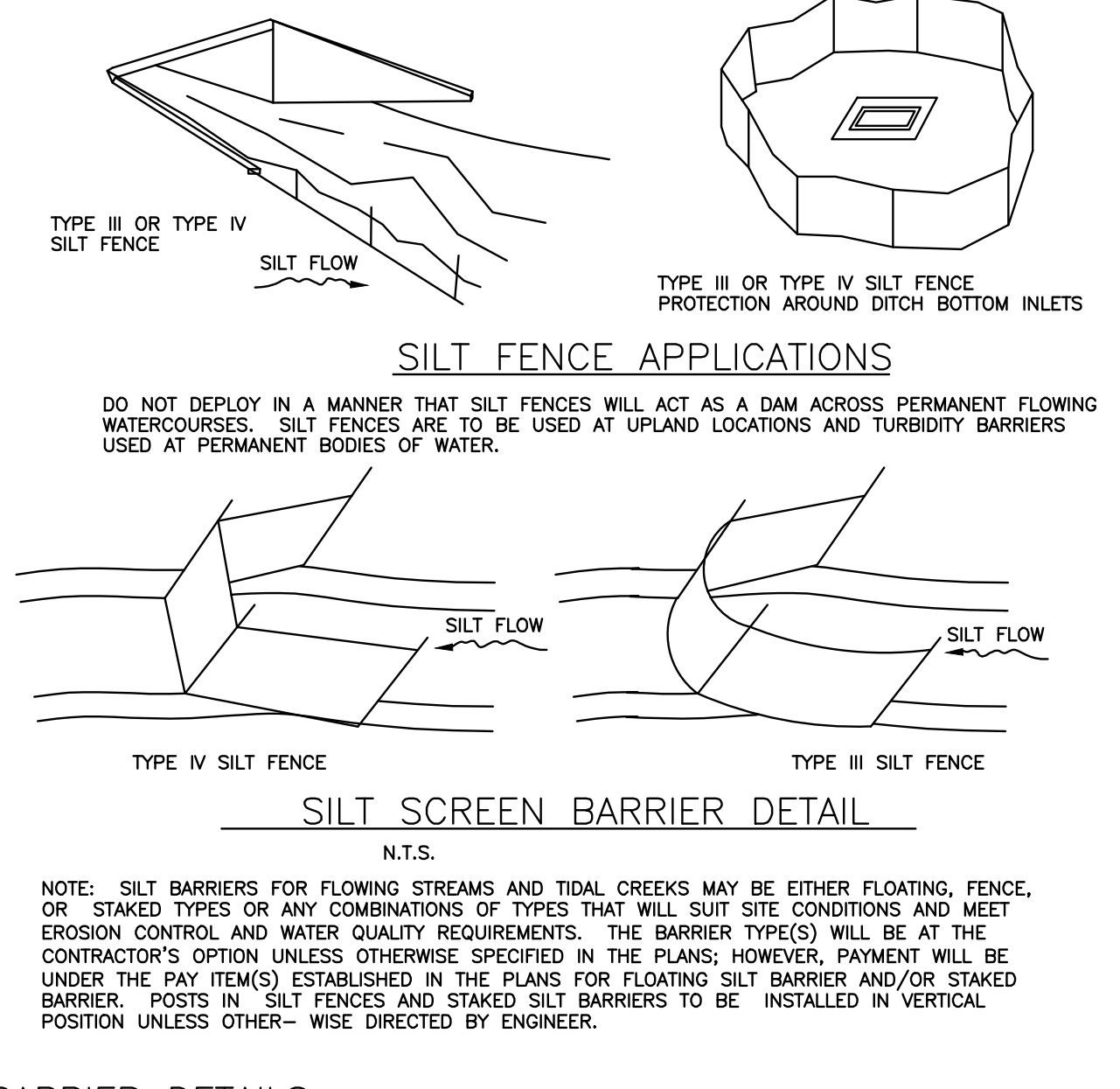
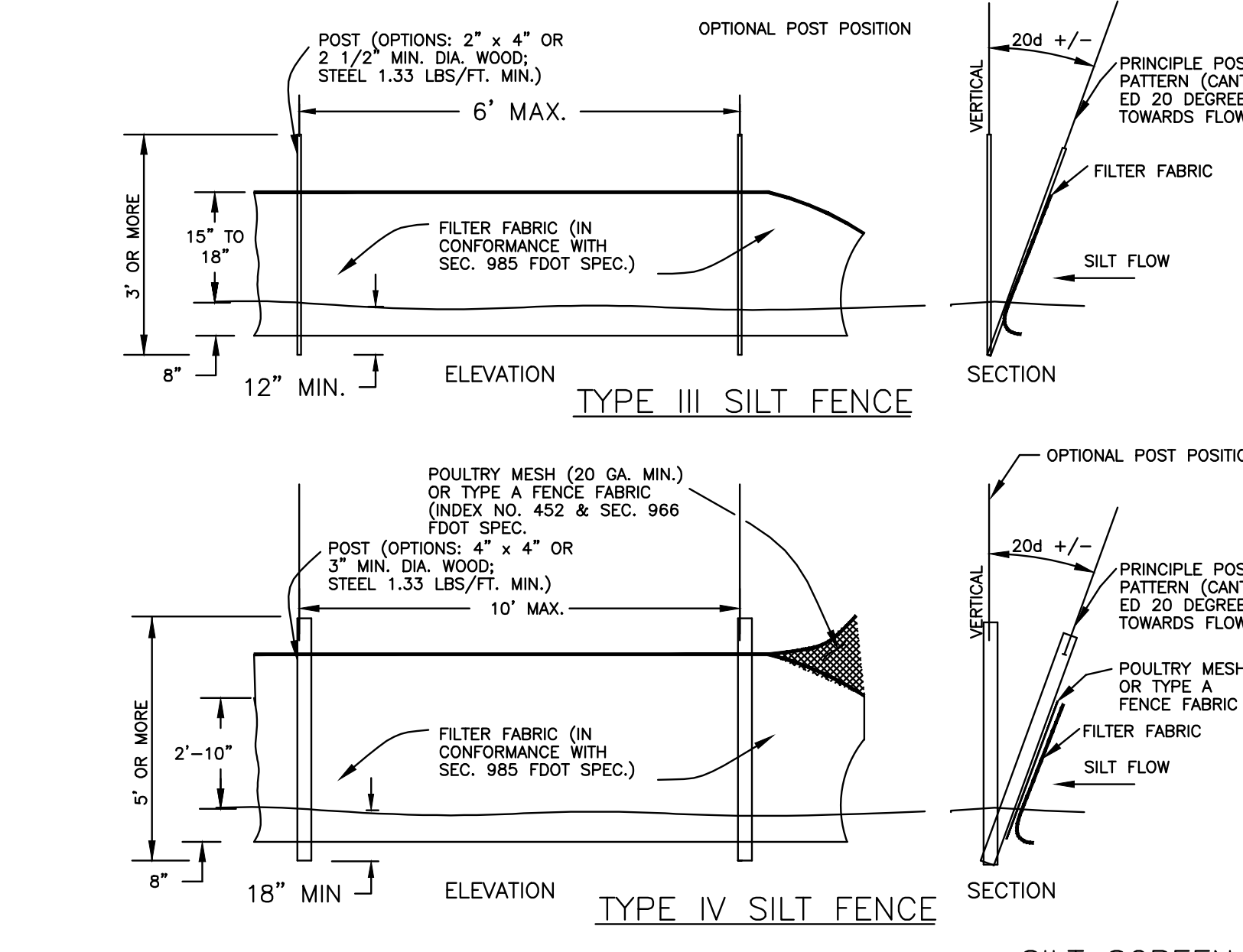
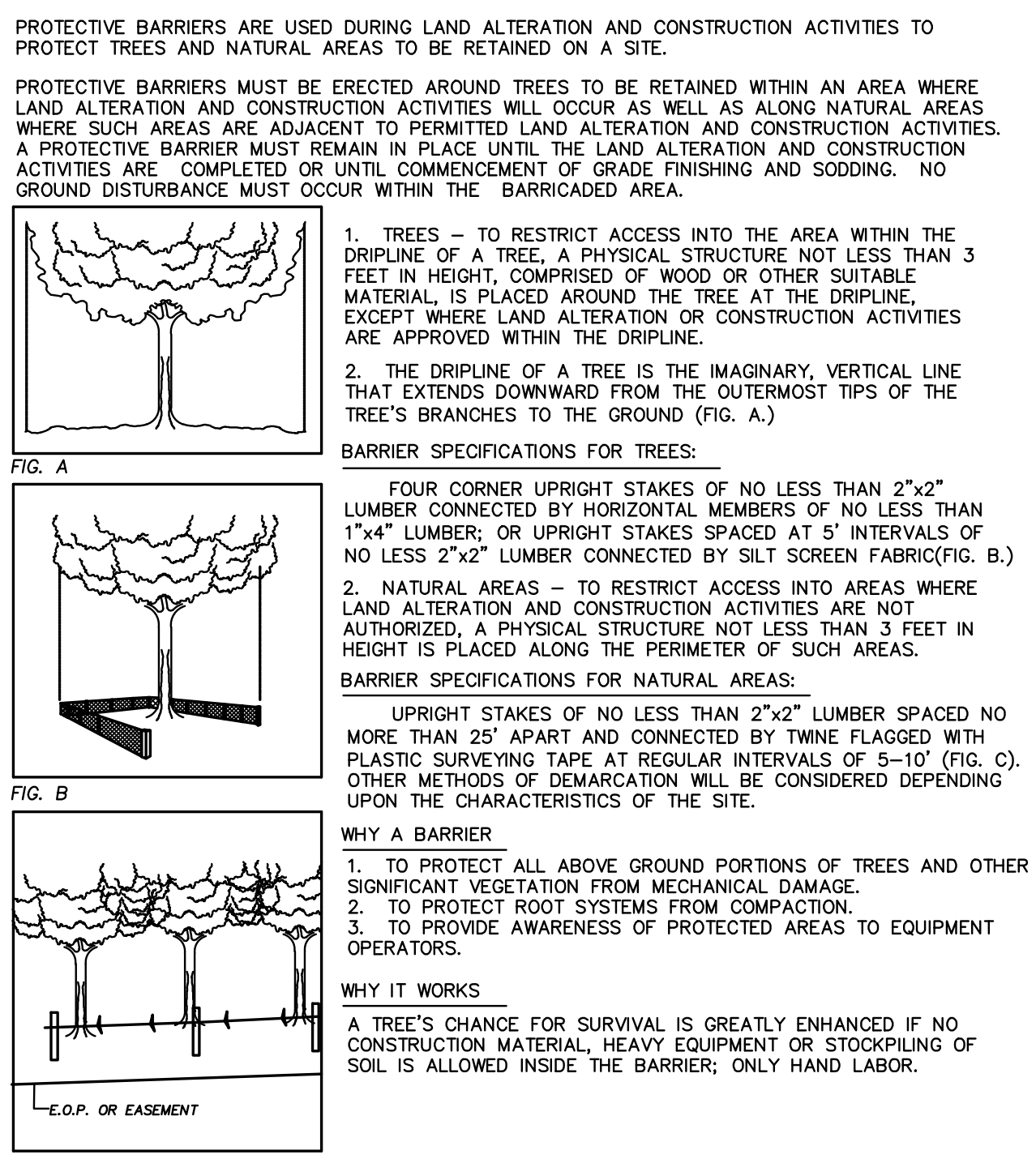
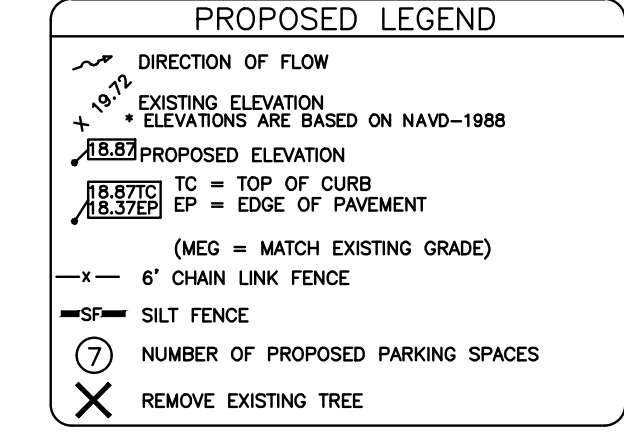


LEGEND table listing various symbols and their corresponding field notes or materials like SET, FOUND, IRON ROD, etc.



Revision table with columns for REV.#, DATE, and REVISION.

Design/Draw/Check table with columns for DESIGNER, DRAWN, and CHECKED, listing names like APC, PJL, and BAB.

Deuel & Associates logo and contact information including address (565 SOUTH HERCULES AVENUE), phone number, and website.

150TH AVE. - 911 MEMORIAL EXISTING CONDITIONS/DEMO. & SOIL EROSION CONTROL PLAN MADEIRA BEACH, PINELLAS COUNTY FLORIDA

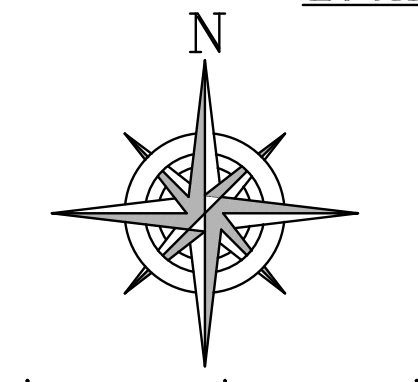
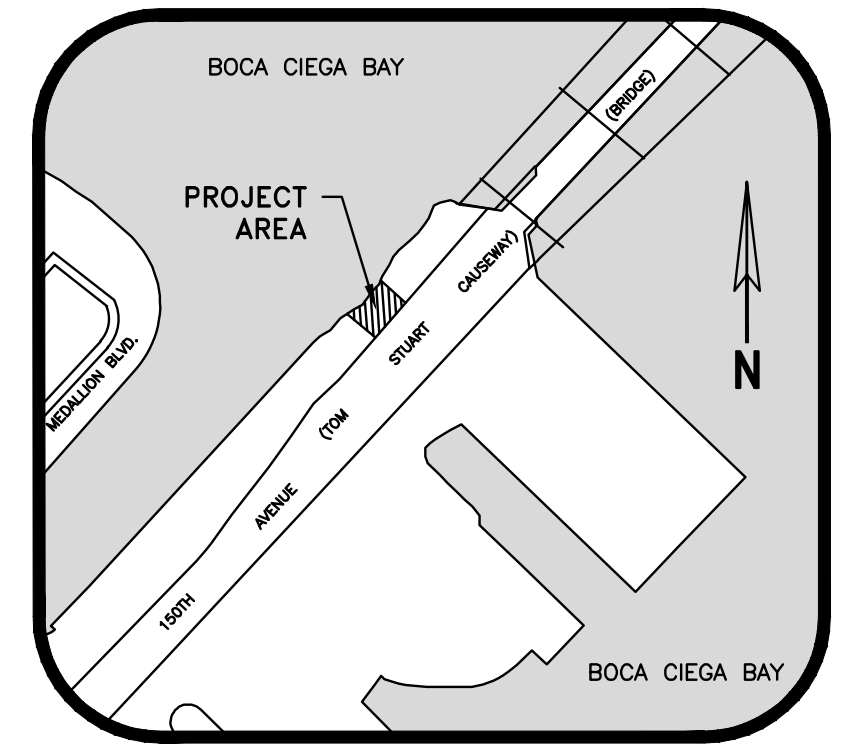
Professional Engineer information table including I. ALBERT CARRIER, REGISTERED IN ACCORDANCE WITH FLORIDA STATUTE 471 (481), and work order details.

**LEGEND**

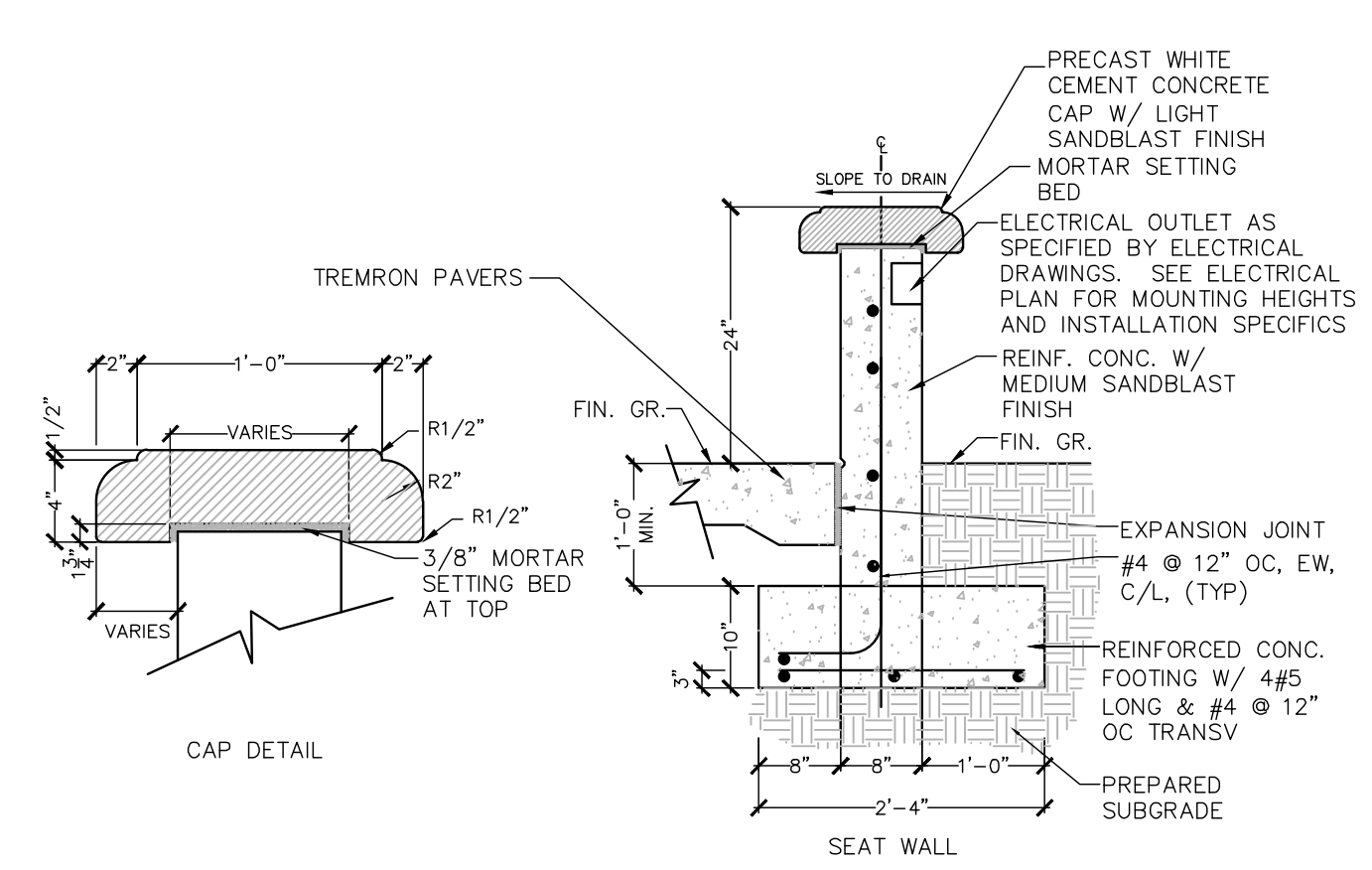
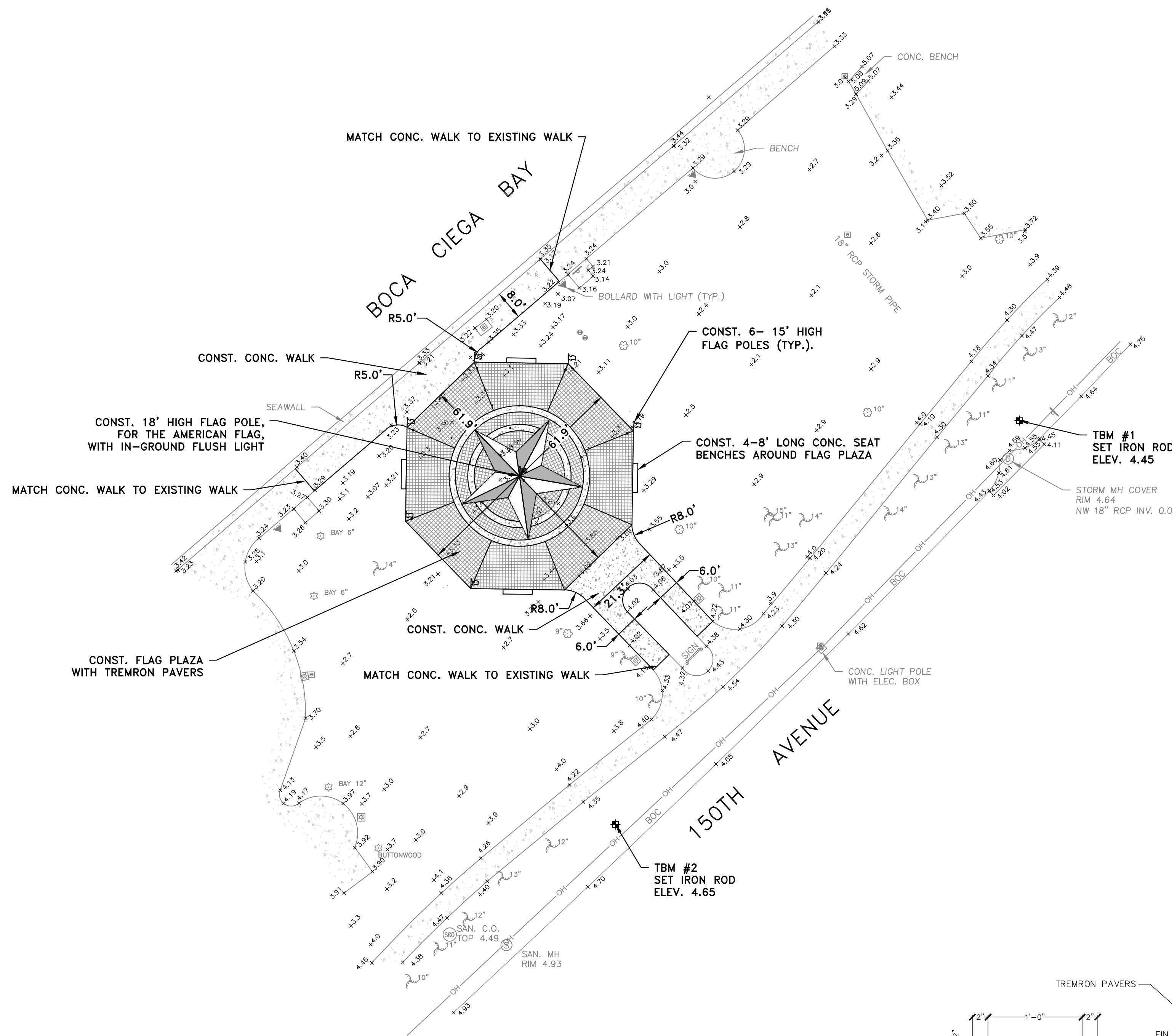
- S. SET
- F. FOUND
- I.R. IRON ROD
- I.P. IRON PIPE
- N&D. NAIL & DISK
- C.M. CONCRETE MONUMENT
- A/C. AIR CONDITIONER
- AC. ACRES
- S.P.D. BACK FLOW PREVENTION DEVICE
- BOLL. BOLLARD
- C. CHORD
- (C) CALCULATED
- CB. CATCH BASIN
- CBW. CONCRETE BLOCK WALL
- CBM. CHORD BEARING
- CLF. CHAIN LINK FENCE
- CMP. CORRUGATED METAL PIPE
- C.O. CLEANOUT
- CONC. CONCRETE
- CS. CONCRETE SLAB
- C.T. CURB TIE
- C.T.V. CABLE TELEVISION
- DEED DEED
- DEP. DEPARTMENT OF ENVIRONMENTAL PROTECTION
- EL. ELEVATION
- (A) FIELD MEASUREMENT
- FF. FINISHED FLOOR
- FHA. FIRE HYDRANT ASSEMBLY
- FPC. FLORIDA POWER CORPORATION
- GI. GRATE INLET
- GV. GAS VALVE
- GM. GAS METER
- GV. GATE VALVE
- GW. GUY WIRE
- INV. INVERT
- LF. LOWEST FLOOR ELEVATION
- LP. LIGHT POLE
- (M) MEASURED
- MAS. MASONRY
- MES. METERS END SECTION
- MH. MANHOLE
- MHWL. NEAR HIGH WATER LINE
- NOVD. NATIONAL GEODETIC VERTICAL DATUM
- O/H. OVERHEAD WIRES
- O.R. OFFICIAL RECORD
- PL. PLAT BOOK
- PG. PAGE/PAGES
- POB. POINT OF BEGINNING
- PRM. PERMANENT REFERENCE MONUMENT
- PVC. POLYVINYL CHLORIDE
- R. RADIUS
- (R) RECORD
- RCP. REINFORCED CONCRETE PIPE
- RCW. RECLAIMED WATER
- RNG. RANGE
- R/W. RIGHT-OF-WAY
- SAN. SANITARY
- SOC. SANITARY CLEAN-OUT
- SEC. SECTION
- SF. SQUARE FEET
- TBM. TEMPORARY BENCHMARK
- TOP. TOP OF BEAM
- TOS. TOP OF SLOPE
- TRANS. TRANSFORMER
- TWP. TOWNSHIP
- UP. UTILITY POLE
- WF. WOOD FENCE
- WM. WATER METER

**PROPOSED LEGEND**

- DIRECTION OF FLOW
- EXISTING ELEVATION
- ELEVATIONS ARE BASED ON NAVD-1988
- PROPOSED ELEVATION
- TC = TOP OF CURB
- EP = EDGE OF PAVEMENT
- (MEG = MATCH EXISTING GRADE)
- 6" CHAIN LINK FENCE
- SILT FENCE
- NUMBER OF PROPOSED PARKING SPACES
- REMOVE EXISTING TREE



**CALL 811**  
 SUNSHINE STATE  
 ONE CALL  
 OF FLORIDA  
 www.call811.com  
 (800) 432-4770  
 MIN. 2 FULL BUSINESS DAYS  
 BEFORE YOU EXCAVATE.



**SITE DATA TABLE:**

SITE LOCATION: 150th AVENUE JUST SOUTH OF TOM STUART CAUSEWAY BRIDGE  
 MADEIRA BEACH, FLORIDA

<b>PROPERTY OWNER:</b> CITY OF MADEIRA BEACH 300 MUNICIPAL DR. MADEIRA BEACH, FL. 33708 ATTN.: WALTER PIERCE	<b>CIVIL ENGINEER &amp; SURVEYOR:</b> DEUEL & ASSOCIATES 565 SOUTH HERCULES AVENUE CLEARWATER, FL 33764 (727) 822-4151-TEL (727) 821-7255-FAX
<b>CONTACT:</b> JONATHAN EVANS PH.: (727) 391-9951	

**FLOOD ZONE:** AE - EL. 10  
**MAP PANEL ID:** 12103C0191G  
**REVISED MAP:** SEPTEMBER 3, 2003

**ZONING:** P-SP **PROPOSED USE:** PARK  
**FUTURE LAND USE:** PLANNED DEVELOPMENT-MIXED USE  
**PIN:** 09/31/15/00000/140/0410

New 25, 2019 - 9:55am X:\CAD Projects\Projects\2019\2019-74\_Military Court of Honor\_911 Memorial\Engineering\Draw\2019-74E\_SPlan.dwg

DESIGN:	APC
DRAWN:	PJL
CHECKED:	BAB

**Deuel & Associates**  
 CONSULTING ENGINEERS LAND SURVEYORS LAND PLANNERS

565 SOUTH HERCULES AVENUE  
 CLEARWATER, FL 33764  
 phone: 727.822.4151  
 WWW.DEUENGINEERING.COM  
 CERTIFICATE OF AUTHORIZATION NUMBER 26320  
 LICENSED BUSINESS NUMBER 107

**150TH AVE. - 911 MEMORIAL SITE PLAN**  
 MADEIRA BEACH, PINELLAS COUNTY FLORIDA

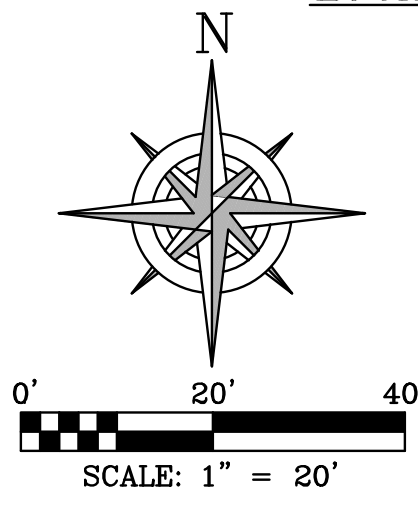
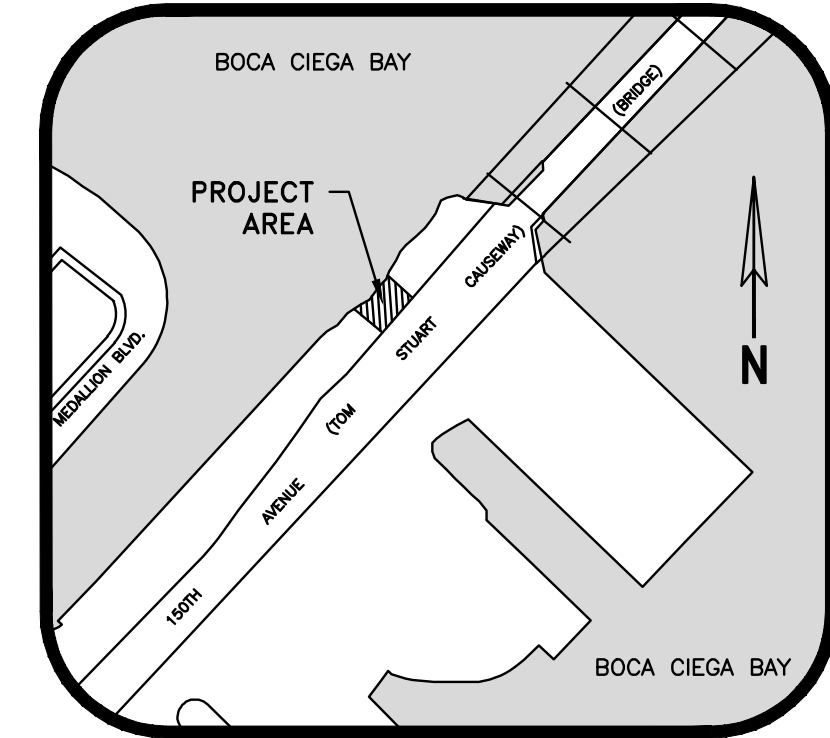
I, ALBERT CARRIER, HEREBY CERTIFY AS A LICENSED PROFESSIONAL ENGINEER, REGISTERED IN ACCORDANCE WITH FLORIDA STATUTE 471 (481) THAT THE ABOVE PROJECT'S SITE AND/OR CONSTRUCTION PLANS, TO THE BEST OF MY KNOWLEDGE, INFORMATION AND BELIEF, WILL MEET APPLICABLE DESIGN CRITERIA SPECIFIED BY CITY MUNICIPAL ORDINANCE, STATE AND FEDERAL ESTABLISHED STANDARDS. I UNDERSTAND THAT IT IS MY RESPONSIBILITY AS THE PROJECT'S PROFESSIONAL ENGINEER TO PERFORM A QUALITY ASSURANCE REVIEW OF THESE SUBMITTED PLANS.

WORK ORDER NO.	2019-74
DATE	NOVEMBER 11, 2019
SCALE:	1" = 20'
SHEET NO.	2 OF 4

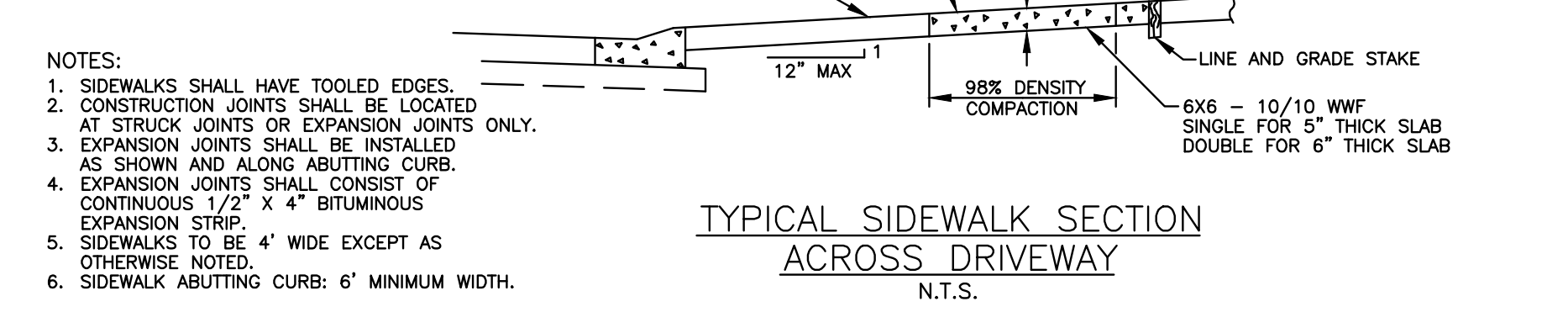
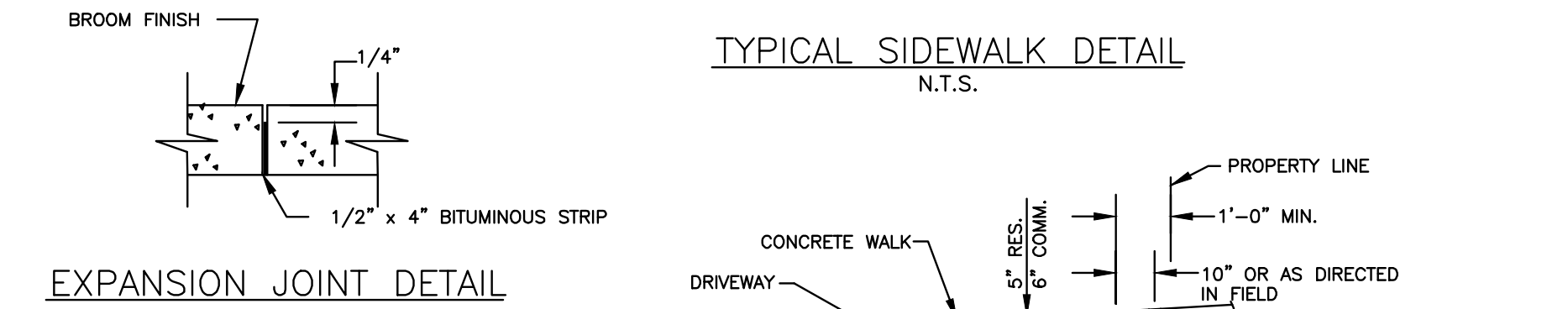
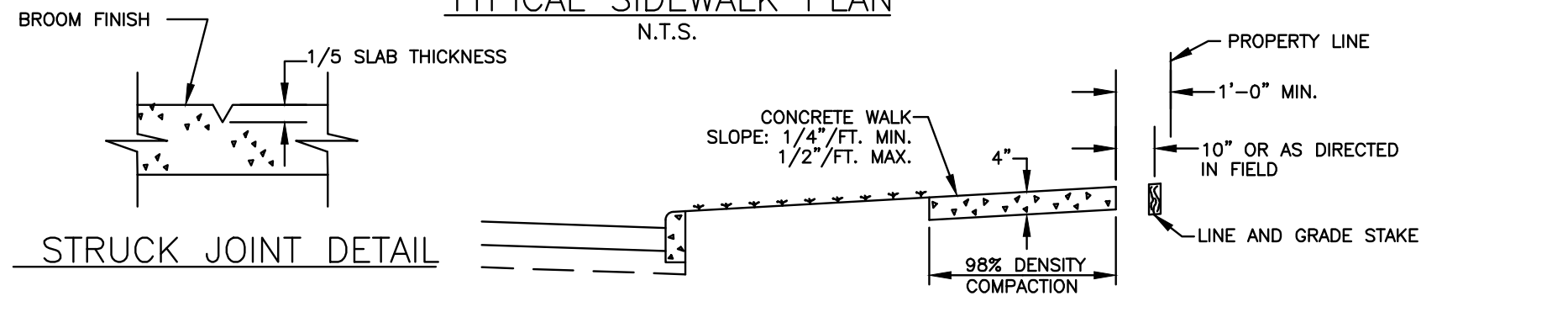
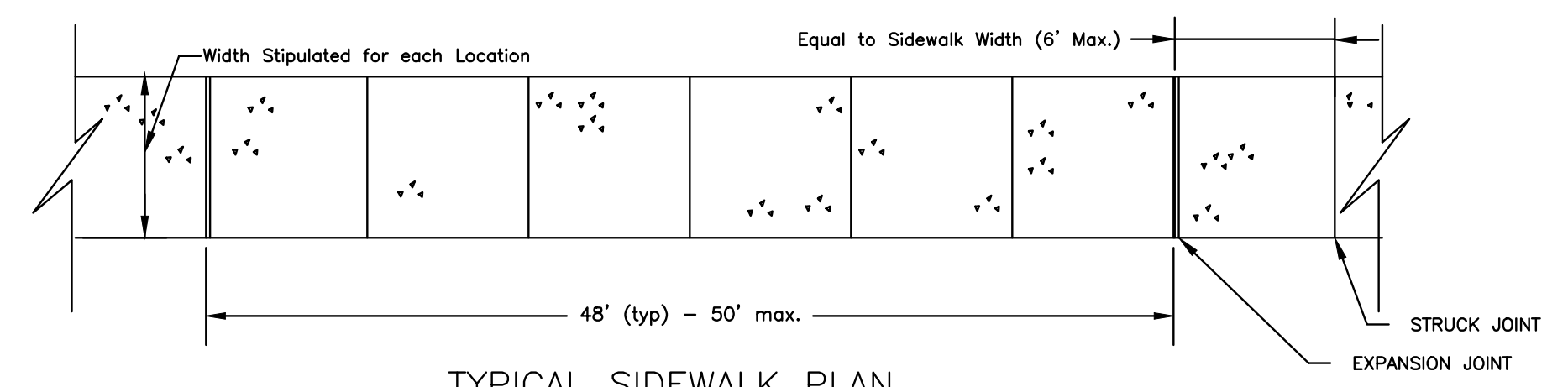
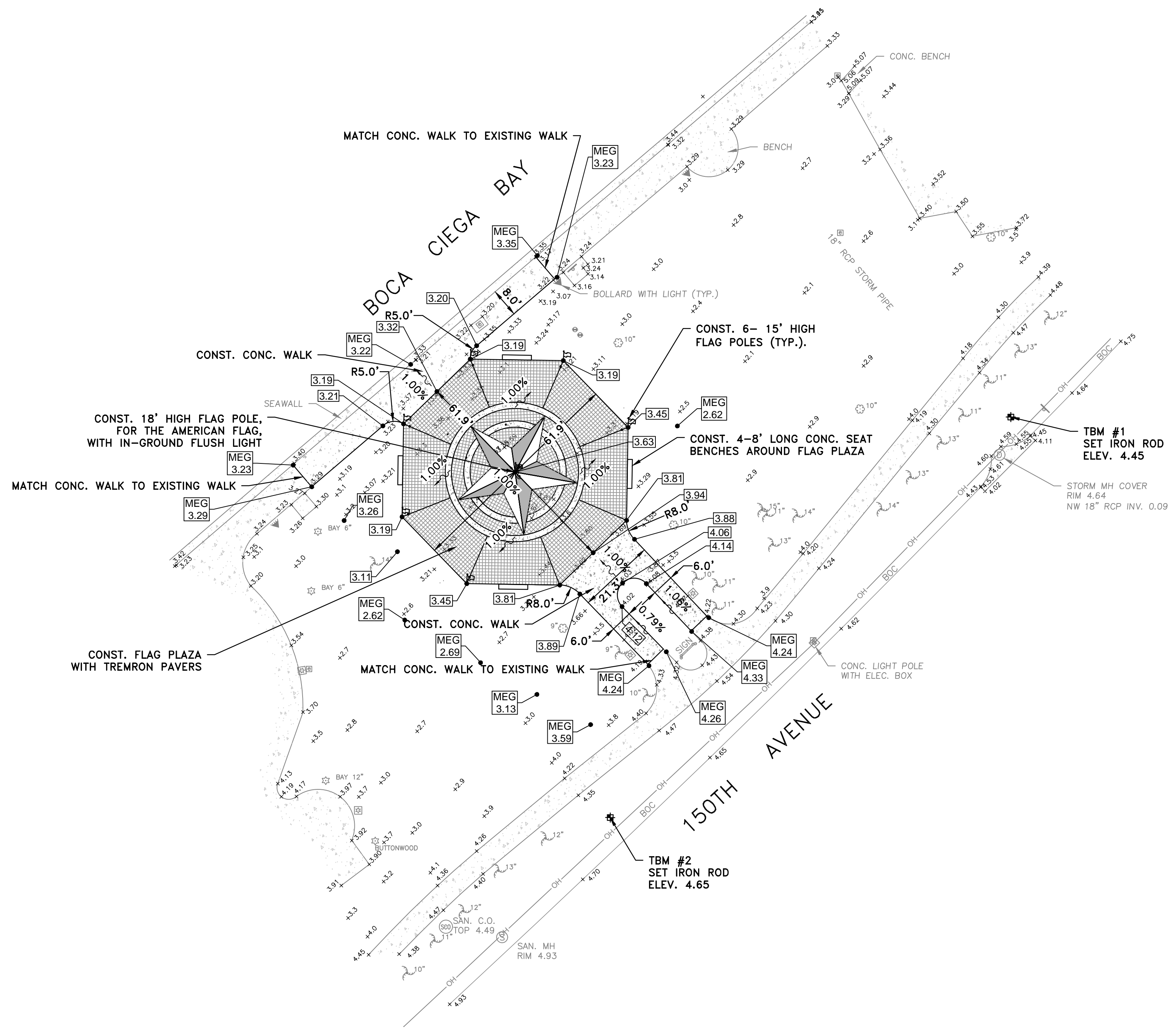
ALBERT P. CARRIER, P.E. 53990

LEGEND	
S.	SET
F.	FOUND
I.R.	IRON ROD
I.P.	IRON PIPE
N&D	NAIL & DISK
C.M.	CONCRETE MONUMENT
A/C	AIR CONDITIONER
AC.	ACRES
B.F.P.D.	BACK FLOW PREVENTION DEVICE
BOLL.	BOLLARD
CHORD	CHORD
(C)	CALCULATED
CB	CATCH BASIN
CBW	CONCRETE BLOCK WALL
CHB	CHORD BEARING
CLF	CHAIN LINK FENCE
CMP	CORRUGATED METAL PIPE
C.O.	CLEANOUT
CONC.	CONCRETE
CS	CONCRETE SLAB
C.T.	CURB TIE
C.V.	CABLE TELEVISION
DEED	DEED
DEP.	DEPARTMENT OF ENVIRONMENTAL PROTECTION
EL.	ELEVATION
(F)	FIELD MEASUREMENT
FF	FINISHED FLOOR
FHA	FIRE HYDRANT ASSEMBLY
FPC	FLORIDA POWER CORPORATION
GI	GRATE INLET
GV	GAS VALVE
GM	GAS METER
GV	GATE VALVE
GW	GUY WIRE
INV.	INVERT
LF	LOWEST FLOOR ELEVATION
LP	LIGHT POLE
(M)	MEASURED
MAS	MASONRY
MES	METERED END SECTION
MH	MANHOLE
MHWL	MEAN HIGH WATER LINE
NVD	NATIONAL GEODETIC VERTICAL DATUM
O/H	OVERHEAD WIRES
O.R.	OFFICIAL RECORD
P.B.	PLAT BOOK
P.P.	PAGE/PAGES
P.O.B.	POINT OF BEGINNING
P.R.M.	PERMANENT REFERENCE MONUMENT
PVC	POLYVINYL CHLORIDE
R.	RADIUS
(R)	RECORD
R.C.P.	REINFORCED CONCRETE PIPE
RCW	RECLAIMED WATER
RNG.	RANGE
R/W	RIGHT-OF-WAY
SAN	SANITARY
SOD	SANITARY CLEAN-OUT
SEC.	SECTION
S.F.	SQUARE FEET
TBM	TEMPORARY BENCHMARK
TOP	TOP OF BERM
T.O.S.	TOP OF SLOPE
TRANS.	TRANSFORMER
TWP	TOWNSHIP
UP	UTILITY POLE
WF	WOOD FENCE
WM	WATER METER

PROPOSED LEGEND	
	DIRECTION OF FLOW
	EXISTING ELEVATION
	ELEVATIONS ARE BASED ON NAVD-1988
	PROPOSED ELEVATION
	TC = TOP OF CURB
	EP = EDGE OF PAVEMENT
	(MEG = MATCH EXISTING GRADE)
	6' CHAIN LINK FENCE
	SILT FENCE
	NUMBER OF PROPOSED PARKING SPACES
	REMOVE EXISTING TREE



**CALL 811**  
**SUNSHINE STATE**  
**ONE CALL**  
**OF FLORIDA**  
[www.callsunshine.com](http://www.callsunshine.com)  
 (800) 432-4770  
 MIN. 2 FULL BUSINESS DAYS  
 BEFORE YOU EXCAVATE.



- NOTES:
- SIDEWALKS SHALL HAVE TOOLED EDGES.
  - CONSTRUCTION JOINTS SHALL BE LOCATED AT STRUCK JOINTS OR EXPANSION JOINTS ONLY.
  - EXPANSION JOINTS SHALL BE INSTALLED AS SHOWN AND ALONG ABUTTING CURB.
  - EXPANSION JOINTS SHALL CONSIST OF CONTINUOUS 1/2" X 4" BITUMINOUS EXPANSION STRIP.
  - SIDEWALKS TO BE 4' WIDE EXCEPT AS OTHERWISE NOTED.
  - SIDEWALK ABUTTING CURB: 6' MINIMUM WIDTH.

REV.#	DATE	REVISION	BY	CHECKED

**Deuel & Associates**  
 CONSULTING ENGINEERS LAND SURVEYORS LAND PLANNERS

565 SOUTH HERCULES AVENUE  
 CLEARWATER, FL 33764  
 phone: 727.822.4151  
 WWW.DEUENGINEERING.COM  
 CERTIFICATE OF AUTHORIZATION NUMBER 26320  
 LICENSED BUSINESS NUMBER 107

**150TH AVE. - 911 MEMORIAL**  
**PAVING, GRADING & DRAINAGE PLAN**  
 MADEIRA BEACH, PINELLAS COUNTY FLORIDA

I, ALBERT CARRIER, HEREBY CERTIFY AS A LICENSED PROFESSIONAL ENGINEER, REGISTERED IN ACCORDANCE WITH FLORIDA STATUTE 471 (481) THAT THE ABOVE PROJECT'S SITE AND/OR CONSTRUCTION PLANS, TO THE BEST OF MY KNOWLEDGE, INFORMATION AND BELIEF, WILL MEET APPLICABLE DESIGN CRITERIA SPECIFIED BY CITY MUNICIPAL ORDINANCE, STATE AND FEDERAL ESTABLISHED STANDARDS. I UNDERSTAND THAT IT IS MY RESPONSIBILITY AS THE PROJECT'S PROFESSIONAL ENGINEER TO PERFORM A QUALITY ASSURANCE REVIEW OF THESE SUBMITTED PLANS.

WORK ORDER NO.	2019-74
DATE	NOVEMBER 11, 2019
SCALE	1" = 20'
SHEET NO.	3 OF 4

ALBERT P. CARRIER, P.E. 53990

GENERAL CONSTRUCTION NOTES
1. ALL RIGHT-OF-WAY INSTALLATIONS WILL BE IN ACCORDANCE WITH PRACTICES REFERENCED IN THE STATE OF FLORIDA UTILITIES ACCOMMODATIONS MANUAL.
2. ALL DESIGN AND CONSTRUCTION MUST CONFORM TO THE MINIMUM STANDARDS SET DOWN IN PINELLAS COUNTY LAND DEVELOPMENT, ZONING AND/OR RELATED ORDINANCES, AND MINIMUM TESTING FREQUENCY REQUIREMENTS.
... (rest of the document text) ...