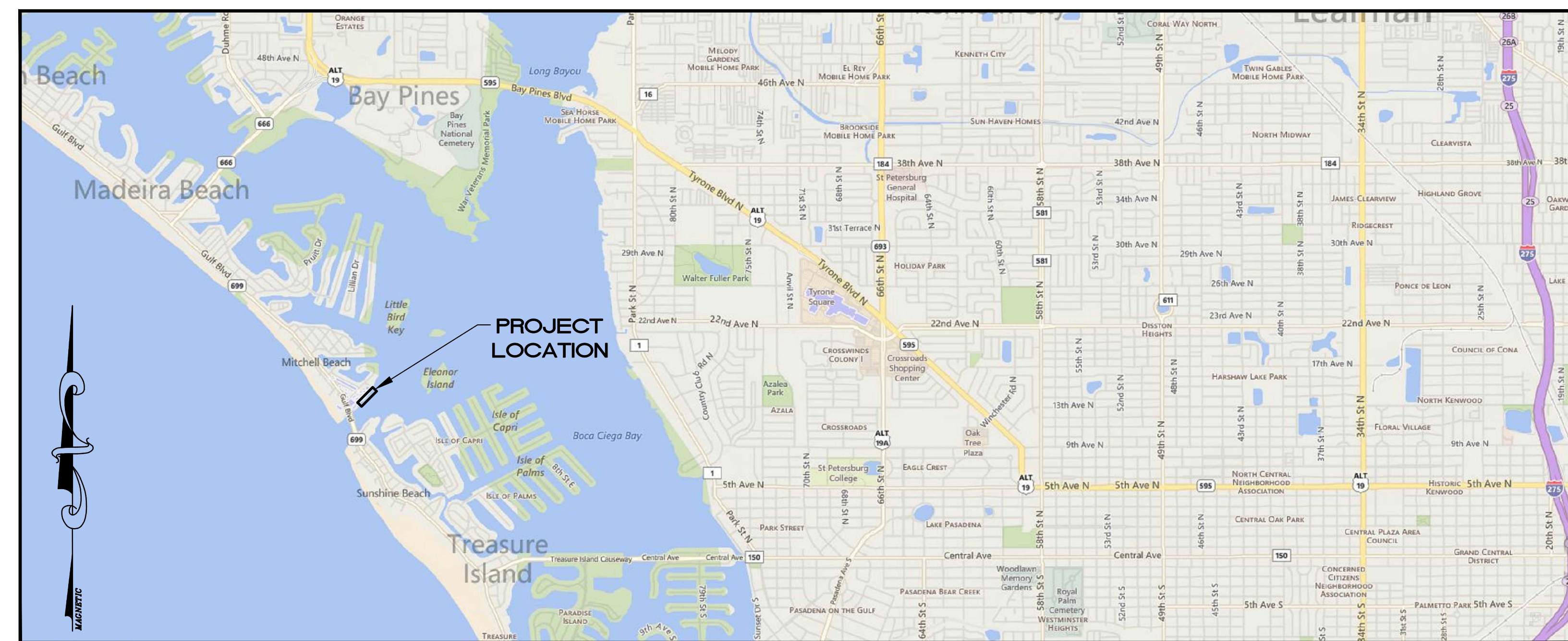


# DOCK CONSTRUCTION PLANS FOR JOHN'S PASS BOARDWALK CITY OF MADEIRA BEACH MADEIRA BEACH, FLORIDA

## INDEX OF DRAWINGS

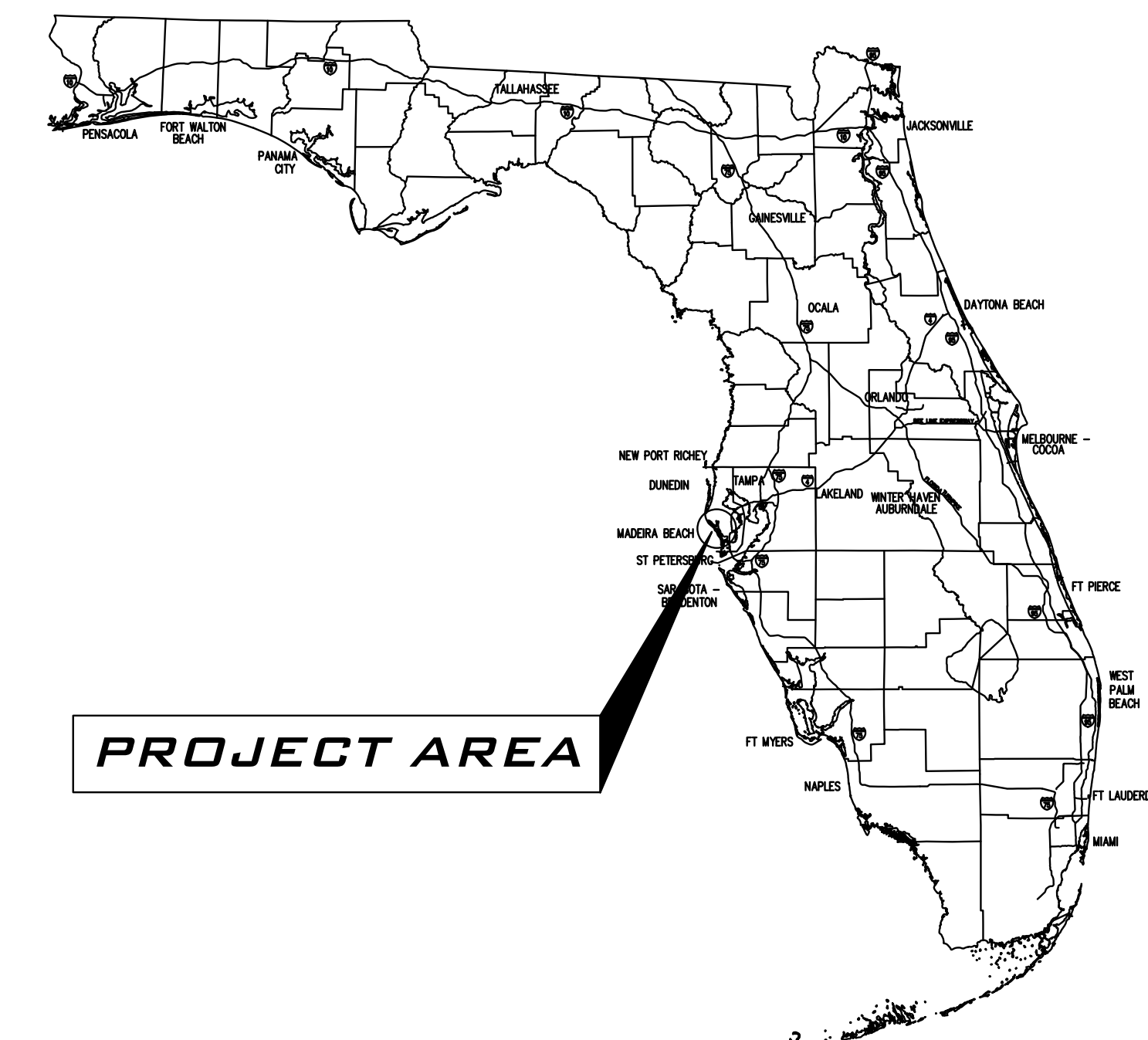
DRAWING TITLE	SHEET NO.
COVER SHEET	1
EXISTING CONDITIONS	2
SITE PLAN	3
DETAILS	4-5

VICINITY MAP



SECTION 15, TOWNSHIP 31 S, RANGE 15 E  
PINELLAS COUNTY, FLORIDA

LOCATION MAP



PROJECT AREA

LOCATION MAP



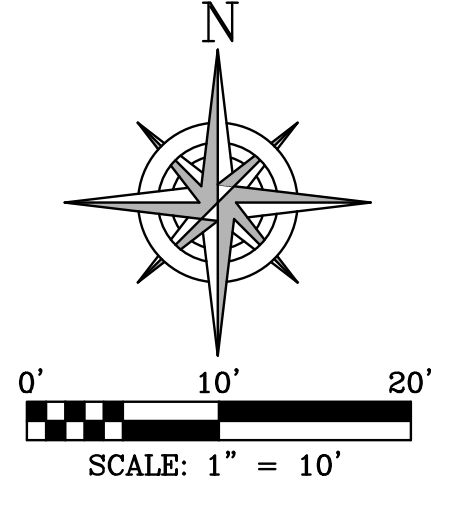
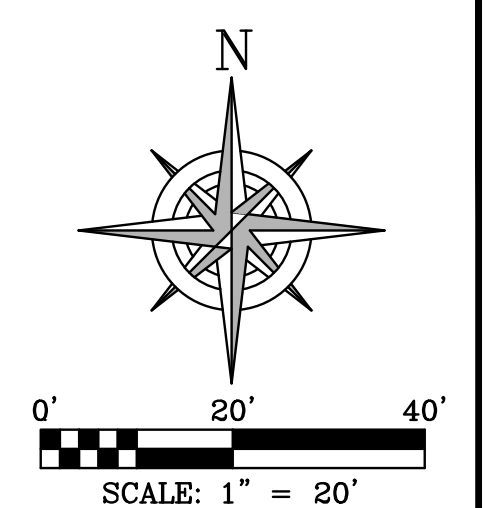
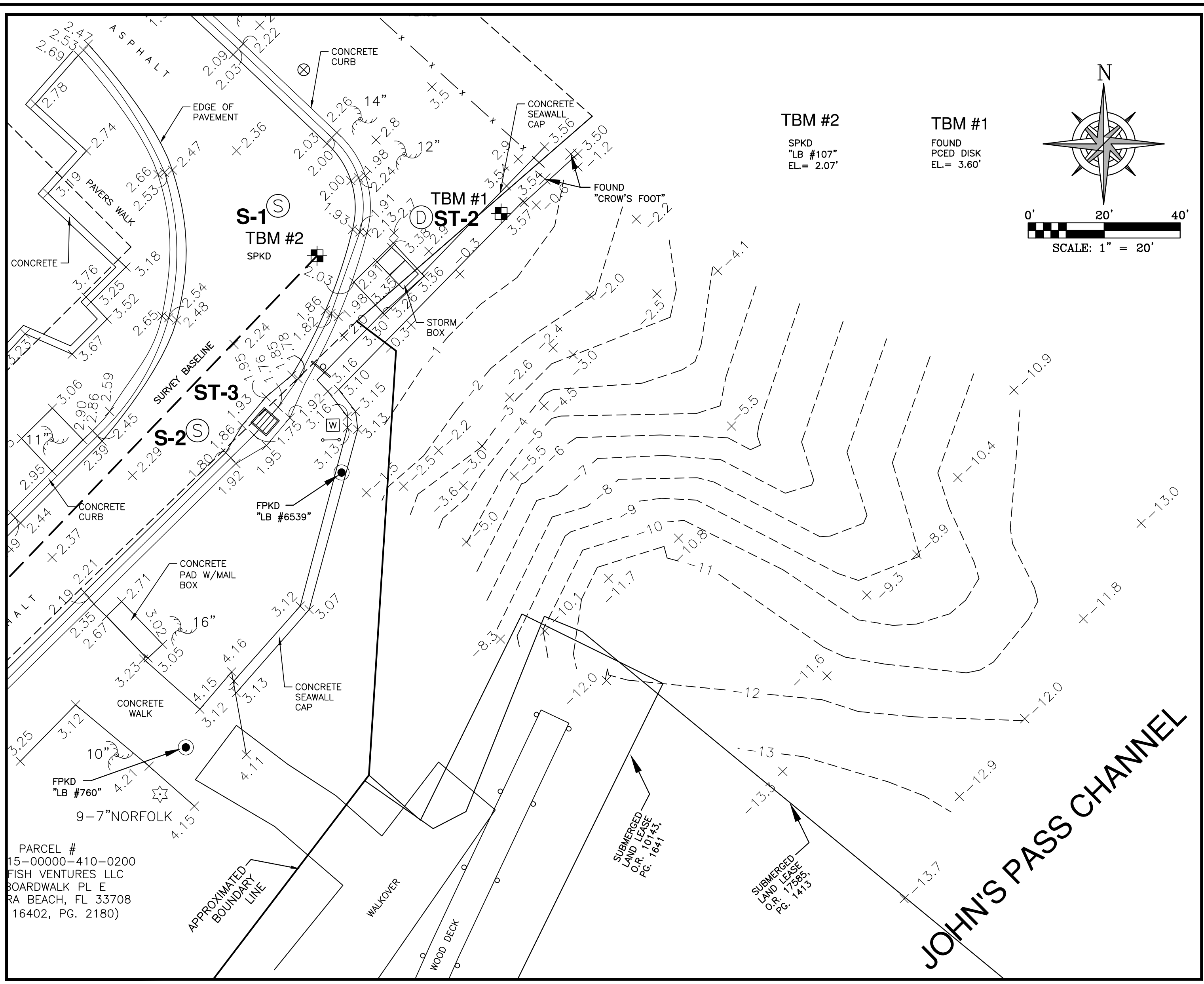
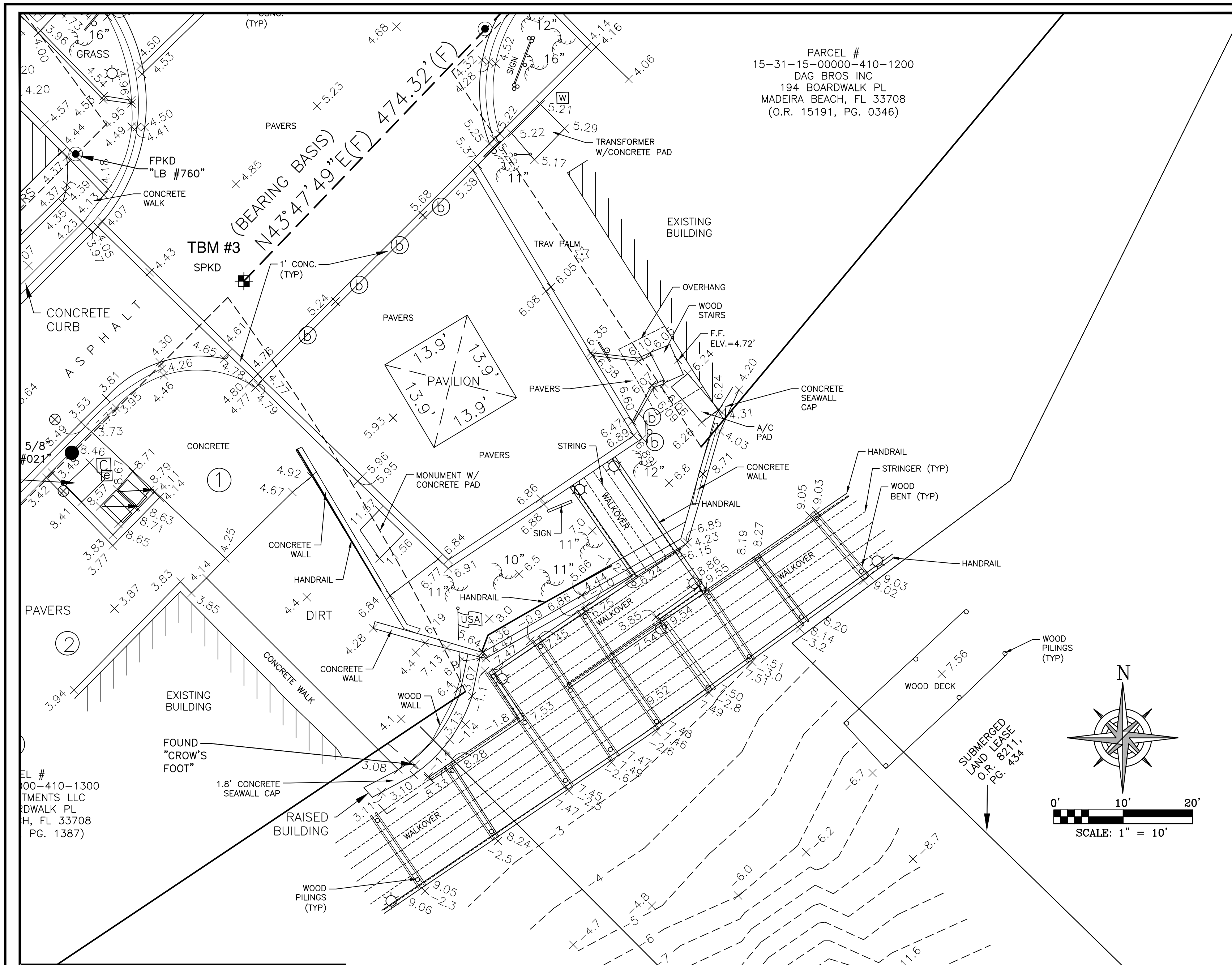
PROJECT LOCATION

**PREPARED FOR**  
**CITY OF MADEIRA BEACH**  
**300 MUNICIPAL DRIVE**  
**MADEIRA BEACH, FL 33708**

**90% DESIGN PLANS**



565 SOUTH HERCULES AVENUE  
CLEARWATER, FL 33764  
PH 727.822.4151    FAX 727.821.7255  
WWW.DEUELENGINEERING.COM  
CERTIFICATE OF AUTHORIZATION NUMBER 26320  
LICENSED BUSINESS NUMBER 1 07



SYMBOL LEGEND	
—	BACK FLOW PREVENTION DEVICE
⊙	BOLLARD
⊕	BURIED IRRIGATION WATER MAIN
⊕	CABLE T.V. BOX
⊕	CABLE T.V. HAND HOLE
⊕	CABLE T.V. UTILITY POLE
⊕	CLEANOUT
⊕	CONCRETE LIGHT POST
⊕	CONCRETE MONUMENT
⊕	CONCRETE MONUMENT (SET)
⊕	CROSS WALK POLE
⊕	CYPRESS
⊕	ELECTRONIC CONTROL BOX
⊕	ELECTRIC HAND HOLE
⊕	ELECTRIC MANHOLE
⊕	ELECTRIC METER
⊕	ELECTRIC TRANSFORMER
⊕	ELM
⊕	FENCE
⊕	FIRE HYDRANT
⊕	FLAG POLE
⊕	FORCE MAIN AIR RELEASE VALVE
⊕	FORCE MAIN GATE VALVE
⊕	GAS AIR RELEASE VALVE
⊕	GAS METER
⊕	GAS VALVE
⊕	GRATE INLET
⊕	GUY WIRE ANCHOR
⊕	HANDICAP PARKING SPACE
⊕	IRON PIPE (FOUND)
⊕	IRON PIPE (SET)
⊕	IRON ROD (FOUND)
⊕	IRON ROD (SET)
⊕	IRRIGATION CONTROL VALVE
⊕	IRRIGATION WATER METER
⊕	IRRIGATION WATER VALVE
⊕	LIFT STATION
⊕	LIGHT POLE
⊕	MAG NAIL AND DISK (SET)
⊕	MAIL BOX
⊕	MITERED END-SECTION
⊕	MONITORING WELL
⊕	OAK
⊕	PALM
⊕	PECAN
⊕	P.K. NAIL & DISK (FOUND)
⊕	P.K. NAIL & DISK (SET)
⊕	POWER & LIGHT POLE
⊕	POWER/UTILITY WOOD POLE
⊕	RAILROAD SAFETY ARM
⊕	RAILROAD SIGN
⊕	RAILROAD SPIKE (FOUND)
⊕	RECLAIMED WATER METER
⊕	RECLAIMED WATER VALVE
⊕	RED MAPLE
⊕	SANITARY MANHOLE
⊕	SANITARY SEWER CLEANOUT
⊕	SIGN
⊕	SIGNAL CONTROL BOX
⊕	STORM CLEAN-OUT
⊕	STORM SEWER MANHOLE
⊕	TELEPHONE PEDESTAL
⊕	TELEPHONE UTILITY POLE
⊕	TEMPORARY BENCHMARK
⊕	TRAFFIC SIGNAL JUNCTION BOX
⊕	WATER METER
⊕	WATER VALVE
⊕	WATER VAULT
⊕	X-CUT (FOUND)
⊕	YARD DRAIN

LEGEND	
A/C	AIR CONDITIONER
ACOE	ARMY CORPS & ENGINEERS
BFPD	BACK FLOW PREVENTION DEVICE
BM	BENCHMARK
BOLL	BOLLARD
C	CHORD
(C)	CALCULATED
CB	CATCH BASIN
CBW	CONCRETE BLOCK WALL
CCR	CERTIFIED CORNER RECORD
CHB	CHORD BEARING
CLF	CHAIN LINK FENCE
C.M.	CONCRETE MONUMENT
CMP	CORRUGATED METAL PIPE
CPP	CORRUGATED PLASTIC PIPE
CONC.	CONCRETE
CT	CURB TIE
CTV	CABLE TELEVISION
(D)	DEED
DB	DEED BOOK
DIP	DIP
ERCP	ELLIPTICAL REINFORCED CONCRETE PIPE
ET	EDGE OF PAVEMENT
EL	ELEVATION
(F)	FIELD
FCIR	FOUND CAPPED IRON ROD
FCM	FOUND CONCRETE MONUMENT
FF	FINISHED FLOOR
FHA	FIRE HYDRANT ASSEMBLY
FIP	FOUND IRON PIPE
FIR	FOUND IRON ROD
FN&D	FOUND NAIL AND DISK
FPKD	FOUND PK NAIL AND DISK
FPC	FLORIDA POWER CORPORATION
FP&D	FOUND IRON PIPE AND DISK
F/T	FENCE TIE
G	GRATE INLET
GAV	GAS VALVE
GM	GAS METER
GV	GATE VALVE
GW	GUY WIRE
HDPE	HIGH-DENSITY POLYETHYLENE PIPE
ID.	IDENTIFICATION
I.P.	IRON PIPE
I.R.	IRON ROD
(L)	LEGAL
LB.	LICENSED BUSINESS
LF	LOWEST FLOOR ELEVATION
LP	LIGHT POLE
MH	MANHOLE
NAV88	NORTH AMERICAN VERTICAL DATUM 1988
NGS	NATIONAL GEODETIC SURVEY
N&D	NAIL AND DISK
NFL	NOT FIELD LOCATED
NGVD29	NATIONAL GEODETIC VERTICAL DATUM 1929
No.	NUMBER
OH	OVERHEAD WIRES
O.R.	OFFICIAL RECORD BOOK
ORD	ORDINANCE
(P)	PLAT BOOK 003, PAGE 054
P.B.	PLAT BOOK
PC	PAGE/PAGES
POB	POINT OF BEGINNING
POL	POINT ON LINE
PP	POWER POLE
PRM	PERMANENT REFERENCE MONUMENT
PSM	PROFESSIONAL SURVEYOR & MAPPER
PVC	POLYVINYL CHLORIDE
P/T	PAVEMENT TIE
R	RADIUS
(R)	RECORD
RCP	REINFORCED CONCRETE PIPE
RCW	RECLAIMED WATER
RNG.	RANGE
R-O-W	RIGHT-OF-WAY
R/W	RIGHT-OF-WAY SECTION
S.	SET
SAN.	SANITARY
SCIR	SET CAPPED IRON ROD
SCO	SANITARY CLEAN-OUT
SCM	SET CONCRETE MONUMENT
SPKD	SET PK NAIL AND DISK
S.R.	STATE ROAD
SWFMD	SOUTHWEST FLORIDA WATER MANAGEMENT DISTRICT
SW/T	SIDEWALK TIE
T.B.	TOP OF BLOCK
TBM	TEMPORARY BENCHMARK
TOB	TOP OF BANK
TOS	TOP OF SLOPE
TRANS	TRANSFORMER
TYP	TYPICAL
TWP.	TOWNSHIP
UP	UTILITY POLE
VCP	VITRIFIED CLAY PIPE
WF	WOOD FENCE
WV	WATER VALVE

## NORTH END OF BOARDWALK

## JOHN'S PASS CHANNEL

## SOUTH END OF BOARDWALK

## 90% DESIGN PLANS

Sep 02, 2015 10:33 AM C:\CAD Projects\Projects\2013\2013-31 Madeira Beach Transient Dock\Engineering\West\2013-31E-90% PLANS.dwg

REV.#	DATE	REVISION	BY	CHECKED

DESIGN: BAB  
DRAWN: DES  
CHECKED: APC

# DEUEL & ASSOCIATES

CONSULTING ENGINEERS LAND SURVEYORS LAND PLANNERS

565 SOUTH HERCULES AVENUE  
CLEARWATER, FL 33764  
PH 727.822.4151 FAX 727.821.7255  
WWW.DEUELENGINEERING.COM  
CERTIFICATE OF AUTHORIZATION NUMBER 26320  
LICENSED BUSINESS NUMBER 107

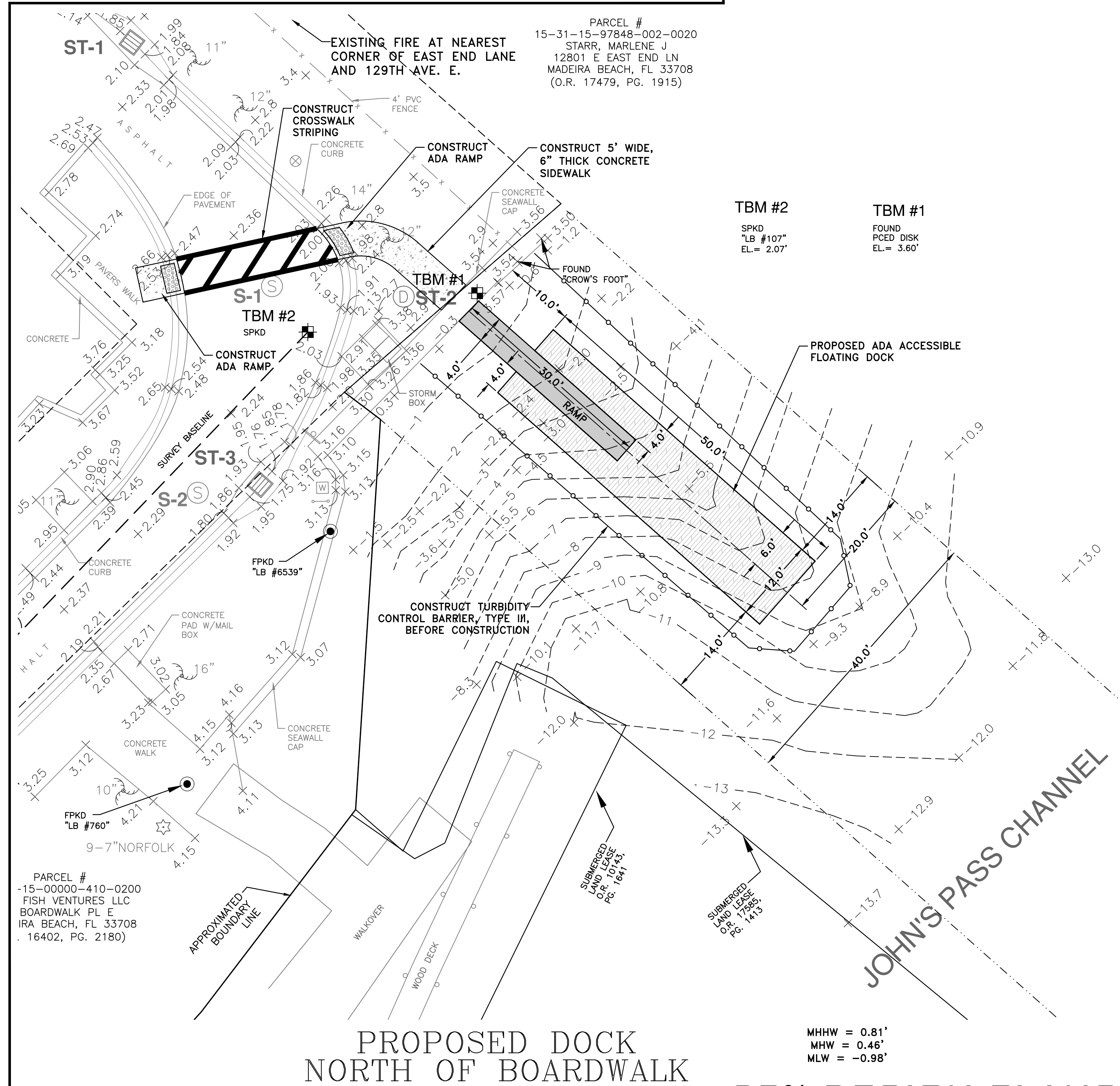
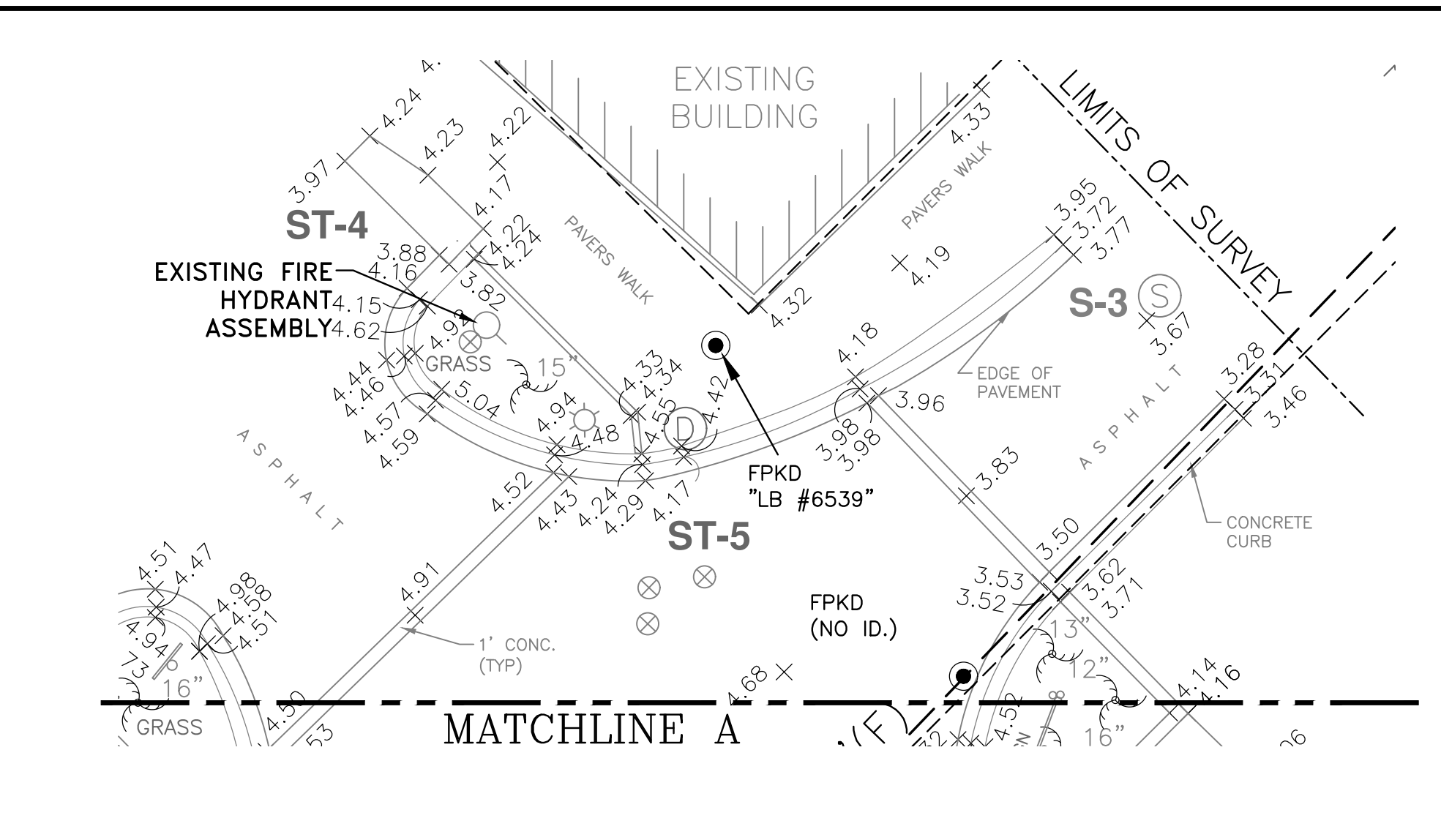
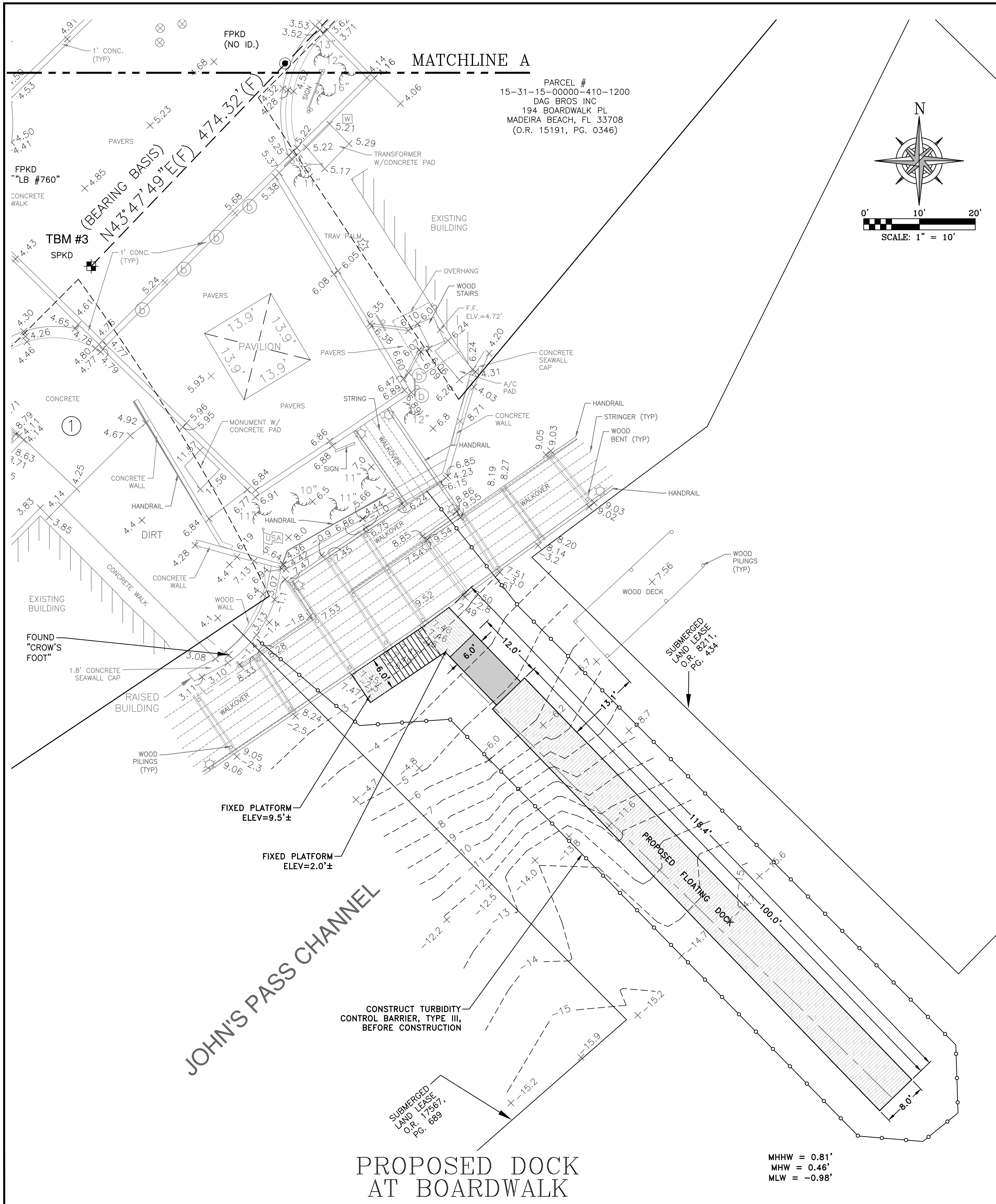
JOHN'S PASS BOARDWALK  
EXISTING CONDITIONS

MADEIRA BEACH FLORIDA

I, AL CARRIER, HEREBY CERTIFY THAT I AM A LICENSED PROFESSIONAL ENGINEER, REGISTERED IN ACCORDANCE WITH FLORIDA STATUTE 471 (481) THAT THE ABOVE PROJECT'S SITE AND/OR CONSTRUCTION PLANS, TO THE BEST OF MY KNOWLEDGE, INFORMATION AND BELIEF, WILL MEET APPLICABLE DESIGN CRITERIA SPECIFIED BY CITY MUNICIPAL ORDINANCE, STATE AND FEDERAL ESTABLISHED STANDARDS. I UNDERSTAND THAT IT IS MY RESPONSIBILITY AS THE PROJECT'S PROFESSIONAL ENGINEER TO PERFORM A QUALITY ASSURANCE REVIEW OF THESE SUBMITTED PLANS.

WORK ORDER NO.	2013-31E
DATE:	JUNE 18, 2015
SCALE:	1" = 10'
SHEET NO.	2 OF 5

ALBERT P. CARRIER, P.E., 53990



Sep. 02, 2015 - 3:31pm A:\CAD Projects\Projects\2013\2013-31 Madeira Beach Transient Dock\Engineering\West\2013-31E-005 PLANS.dwg

REV.#	DATE	REVISION	BY	CHECKED

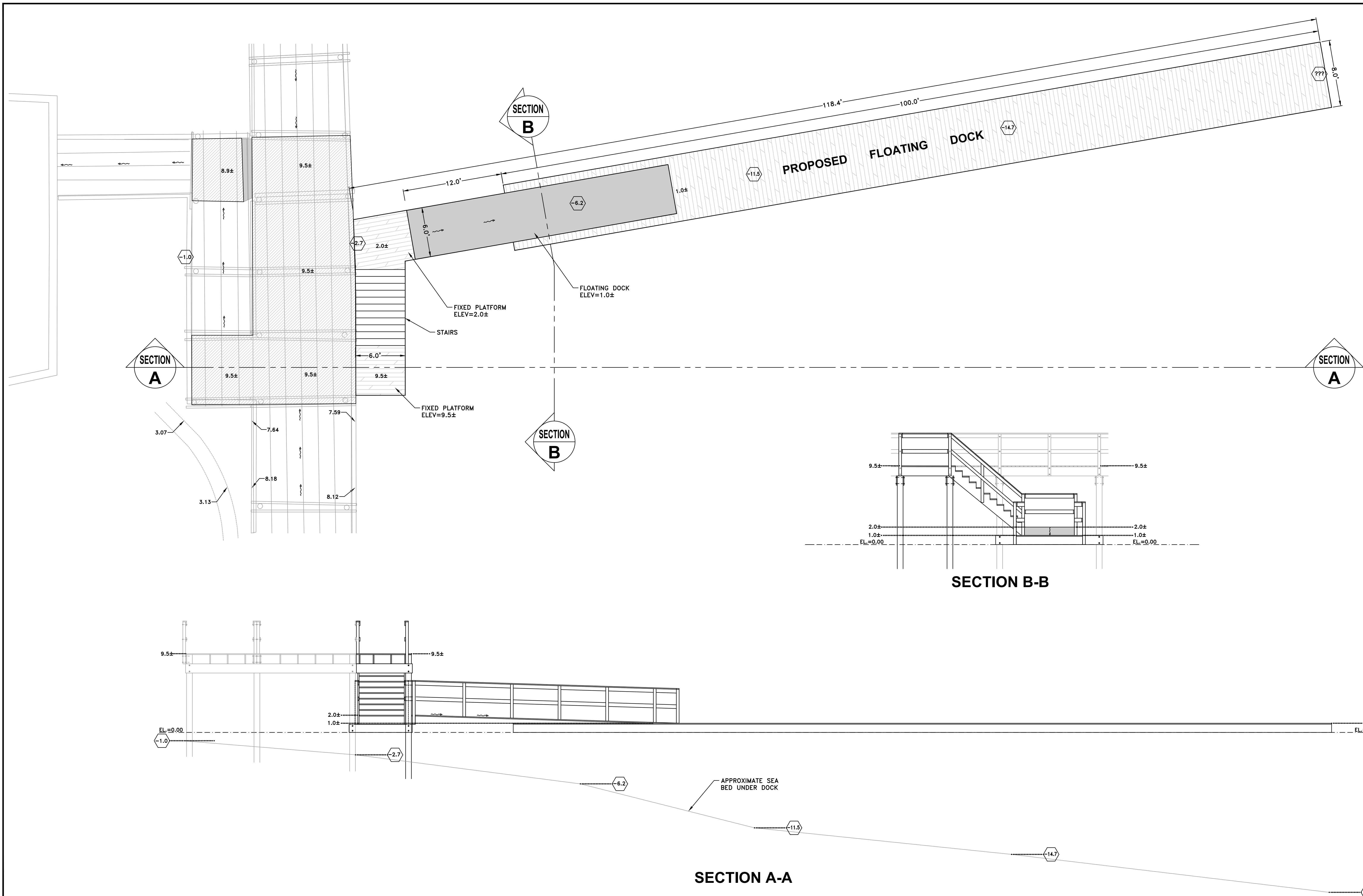
**DEUEL & ASSOCIATES**  
 CONSULTING ENGINEERS LAND SURVEYORS LAND PLANNERS  
 565 SOUTH HERCULES AVENUE  
 CLEARWATER, FL 33764  
 PH 727.822.4151 FAX 727.821.7255  
 WWW.DEUELENGINEERING.COM  
 CERTIFICATE OF AUTHORIZATION NUMBER 26320  
 LICENSED BUSINESS NUMBER 107

JOHN'S PASS BOARDWALK  
 SITE PLAN  
 MADEIRA BEACH FLORIDA

I, AL CARRIER, HEREBY CERTIFY AS A LICENSED PROFESSIONAL ENGINEER, REGISTERED IN ACCORDANCE WITH FLORIDA STATUTE 471 (481) THAT THE ABOVE PROJECT'S SITE AND/OR CONSTRUCTION PLANS, TO THE BEST OF MY KNOWLEDGE, INFORMATION AND BELIEF, WILL MEET APPLICABLE DESIGN CRITERIA SPECIFIED BY CITY MUNICIPAL ORDINANCE, STATE AND FEDERAL ESTABLISHED STANDARDS. I UNDERSTAND THAT IT IS MY RESPONSIBILITY AS THE PROJECT'S PROFESSIONAL ENGINEER TO PERFORM A QUALITY ASSURANCE REVIEW OF THESE SUBMITTED PLANS.

WORK ORDER NO.	2013-31E
DATE	JUNE 18, 2015
SCALE	1" = 10'
SHEET NO.	3 OF 5

**90% DESIGN PLANS**



**90% DESIGN PLANS**

Sep 02, 2015 3:31pm X:\CAD Projects\Projects\2013\2013-31 Madeira Beach Treatment Dock\Engineering\West\2013-31E-005 PLANS.dwg

REV.#	DATE	REVISION	BY	CHECKED

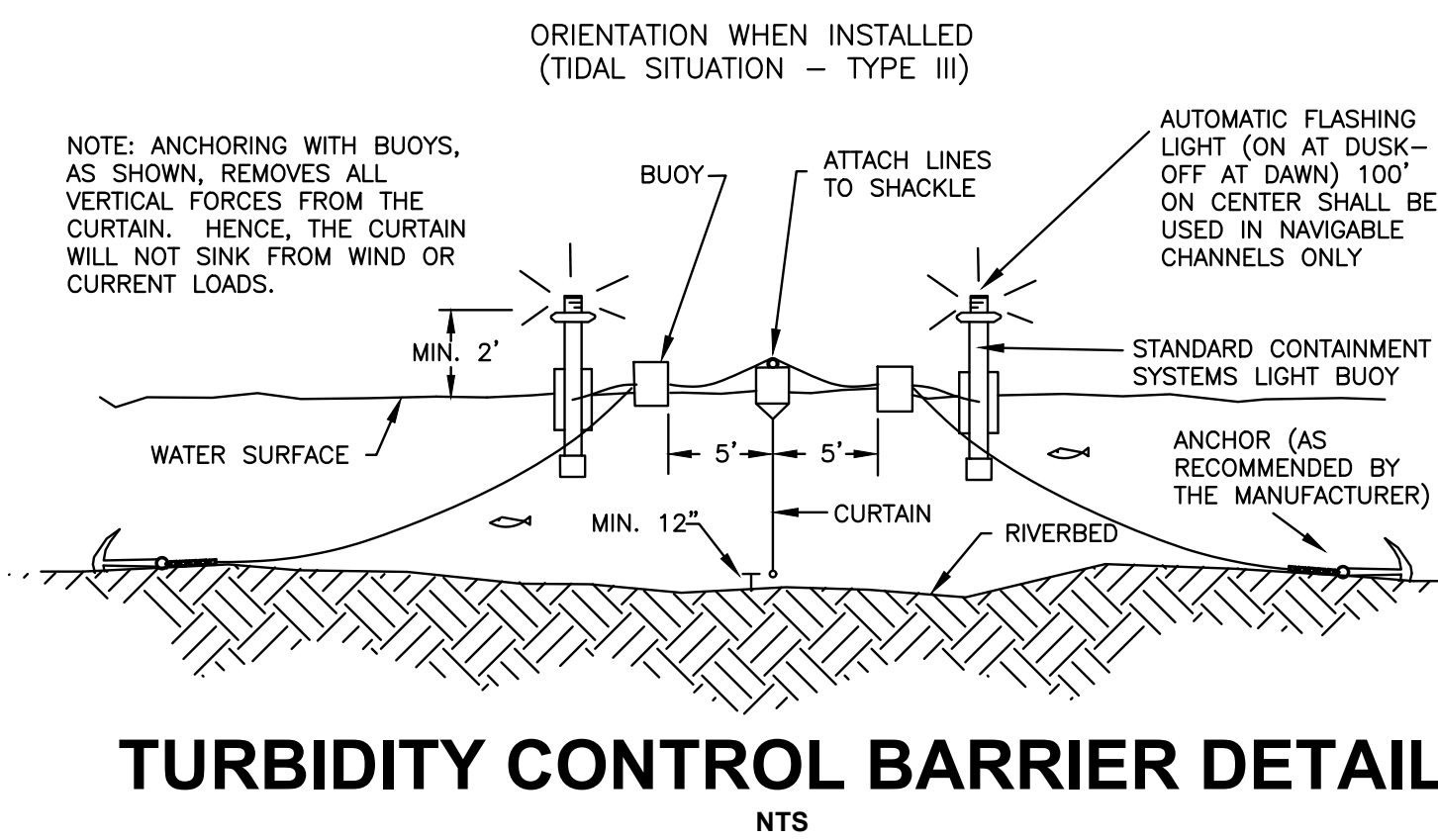
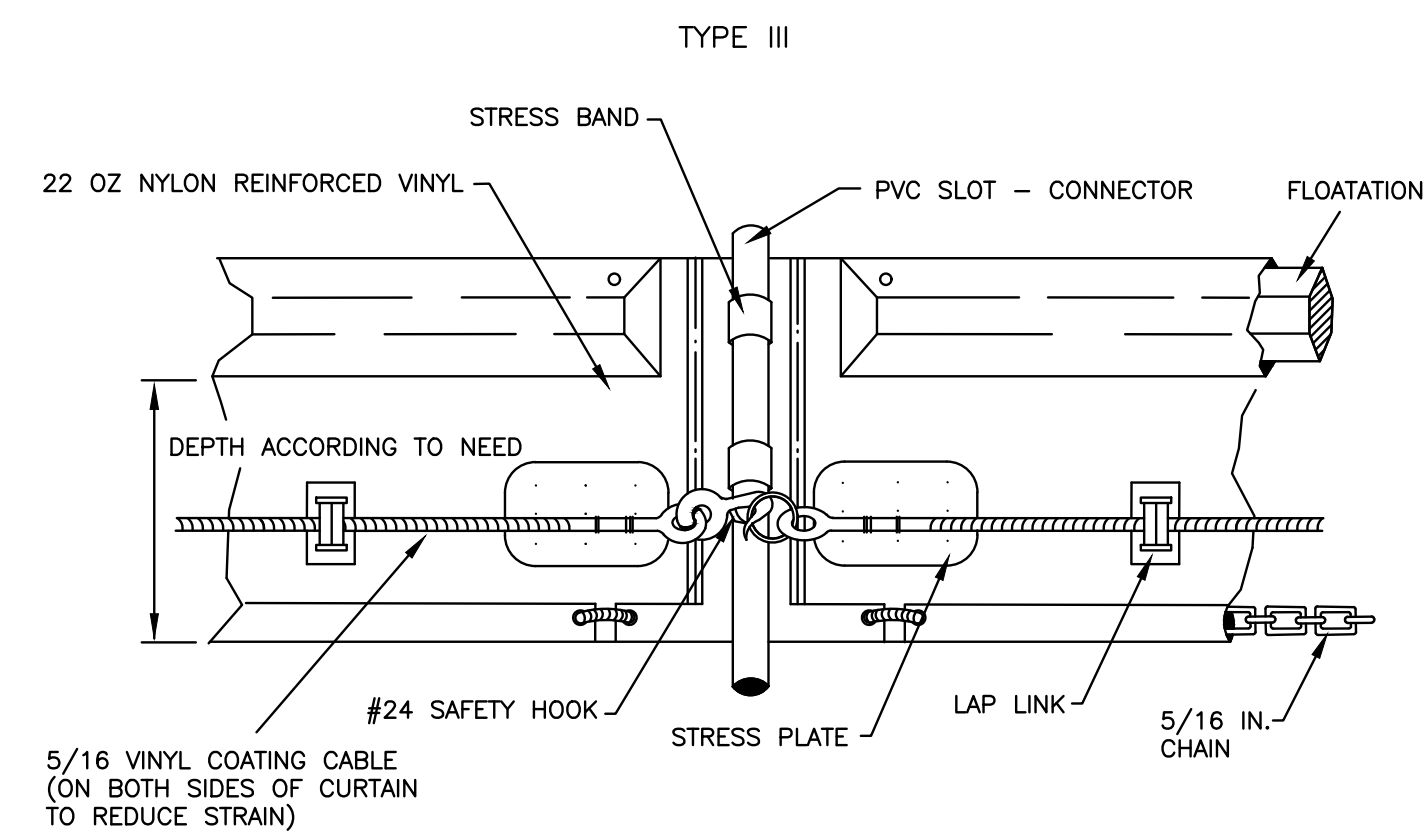
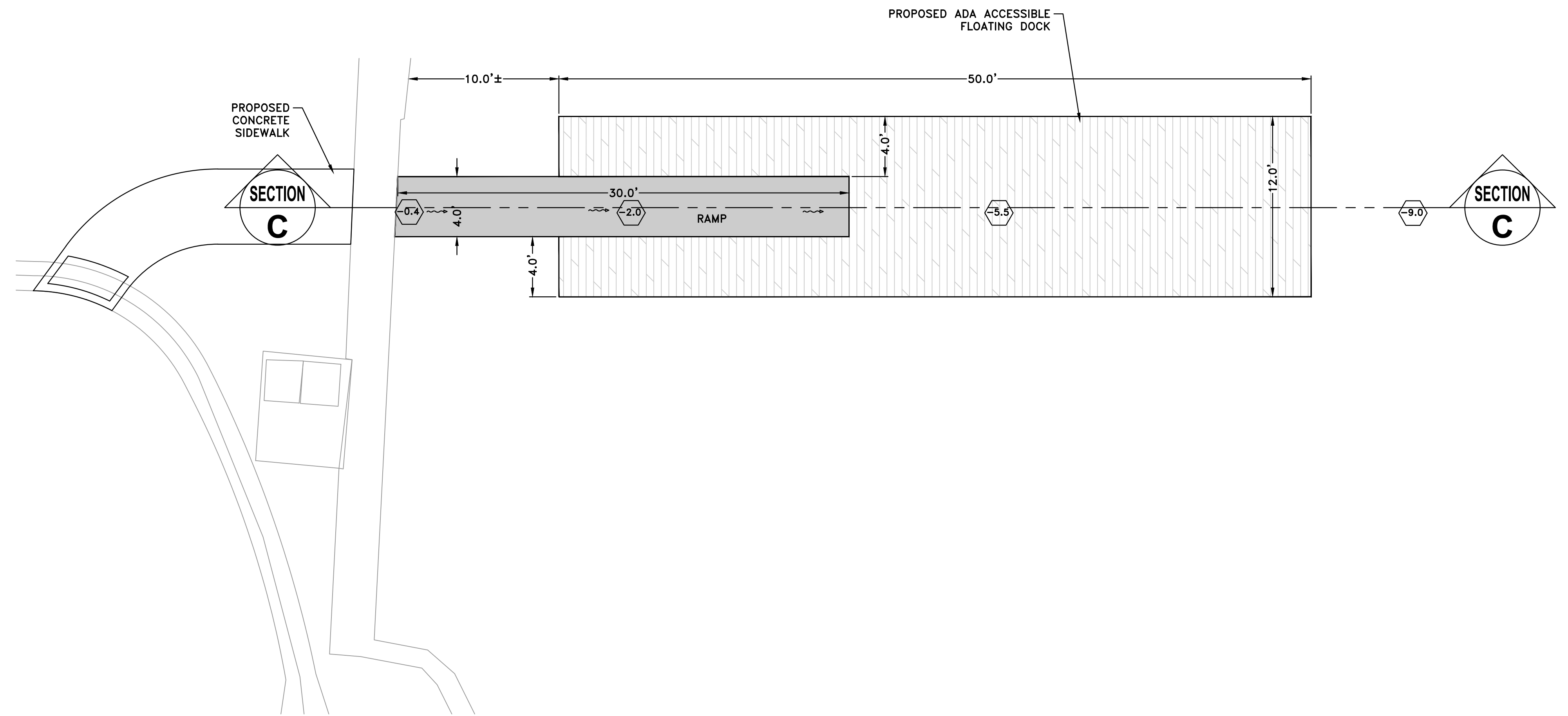
**DEUEL & ASSOCIATES**  
 CONSULTING ENGINEERS LAND SURVEYORS LAND PLANNERS  
 565 SOUTH HERCULES AVENUE  
 CLEARWATER, FL 33764  
 PH 727.822.4151 FAX 727.821.7255  
 WWW.DEUENGINEERING.COM  
 CERTIFICATE OF AUTHORIZATION NUMBER 26320  
 LICENSED BUSINESS NUMBER 107

JOHN'S PASS BOARDWALK  
 DETAILS  
 MADEIRA BEACH FLORIDA

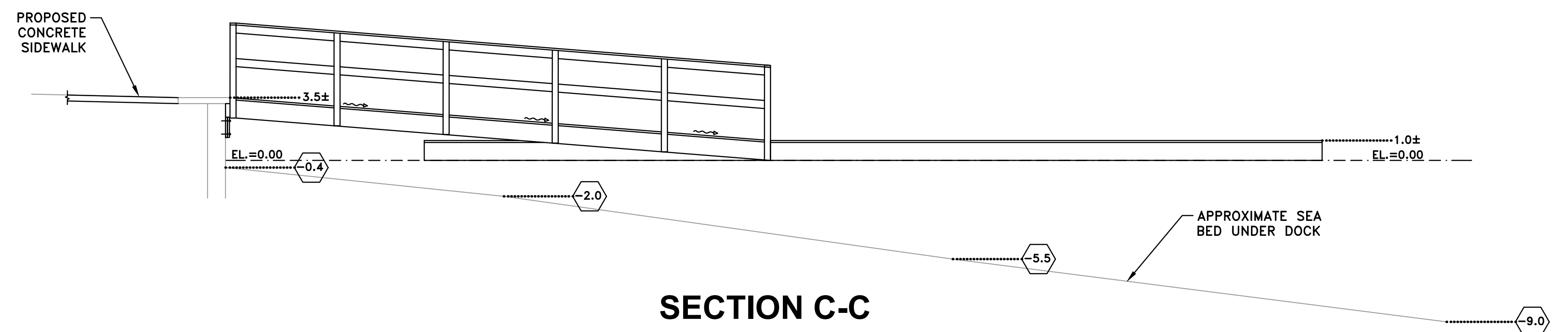
I, AL CARRIER, HEREBY CERTIFY AS A LICENSED PROFESSIONAL ENGINEER, REGISTERED IN ACCORDANCE WITH FLORIDA STATUTE 471 (481) THAT THE ABOVE PROJECT'S SITE AND/OR CONSTRUCTION PLANS, TO THE BEST OF MY KNOWLEDGE, INFORMATION AND BELIEF, WILL MEET APPLICABLE DESIGN CRITERIA SPECIFIED BY CITY MUNICIPAL ORDINANCE, STATE AND FEDERAL ESTABLISHED STANDARDS. I UNDERSTAND THAT IT IS MY RESPONSIBILITY AS THE PROJECT'S PROFESSIONAL ENGINEER TO PERFORM A QUALITY ASSURANCE REVIEW OF THESE SUBMITTED PLANS.

ALBERT P. CARRIER, P.E., 53990

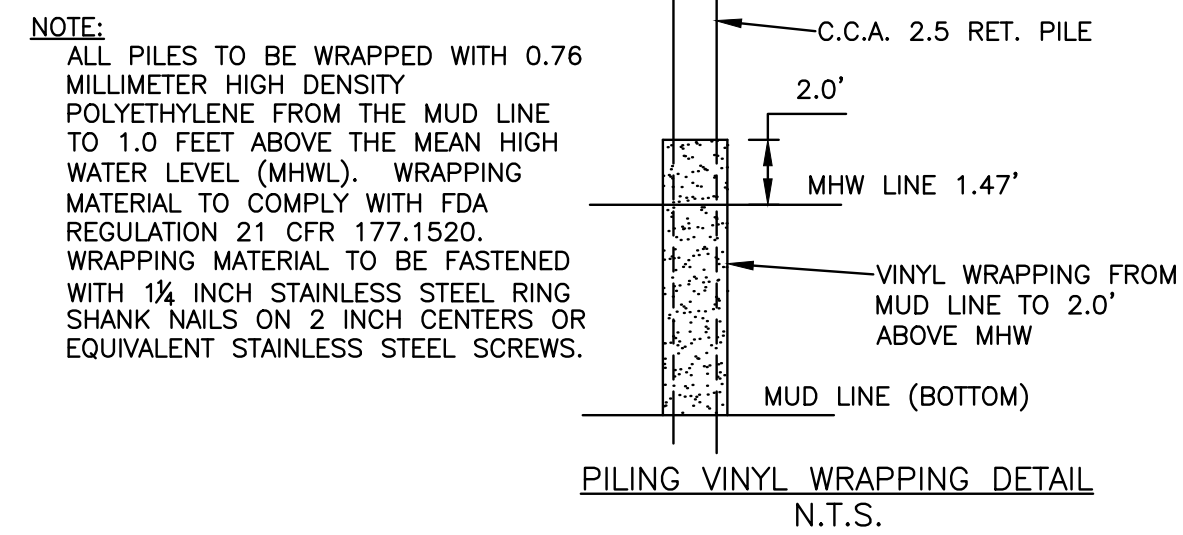
WORK ORDER NO.	2013-31E
DATE:	JUNE 18, 2015
SCALE:	1" = 10'
SHEET NO.	4 OF 5



**TURBIDITY CONTROL BARRIER DETAIL**  
NTS



**SECTION C-C**



**PILING VINYL WRAPPING DETAIL**  
N.T.S.

Sep. 02, 2015 - 3:31pm A:\CAD Projects\Projects\2013\2013-31 Madeira Beach Treatment Dock\Engineering\West\2013-31E-3008 PLANS.dwg

DESIGN:	BAB
DRAWN:	DES
CHECKED:	APC
BY:	

**DEUEL & ASSOCIATES**  
CONSULTING ENGINEERS LAND SURVEYORS LAND PLANNERS

565 SOUTH HERCULES AVENUE  
CLEARWATER, FL 33764  
PH 727.822.4151 FAX 727.821.7255  
WWW.DEULENGINEERING.COM  
CERTIFICATE OF AUTHORIZATION NUMBER 26320  
LICENSED BUSINESS NUMBER 107

*JOHN'S PASS BOARDWALK  
DETAILS*

MADEIRA BEACH

FLORIDA

I, AL CARRIER, HEREBY CERTIFY AS A LICENSED PROFESSIONAL ENGINEER, REGISTERED IN ACCORDANCE WITH FLORIDA STATUTE 471 (481) THAT THE ABOVE PROJECT'S SITE AND/OR CONSTRUCTION PLANS, TO THE BEST OF MY KNOWLEDGE, INFORMATION AND BELIEF, WILL MEET APPLICABLE DESIGN CRITERIA SPECIFIED BY CITY MUNICIPAL ORDINANCE, STATE AND FEDERAL ESTABLISHED STANDARDS. I UNDERSTAND THAT IT IS MY RESPONSIBILITY AS THE PROJECT'S PROFESSIONAL ENGINEER TO PERFORM A QUALITY ASSURANCE REVIEW OF THESE SUBMITTED PLANS.

ALBERT P. CARRIER, P.E., 53990

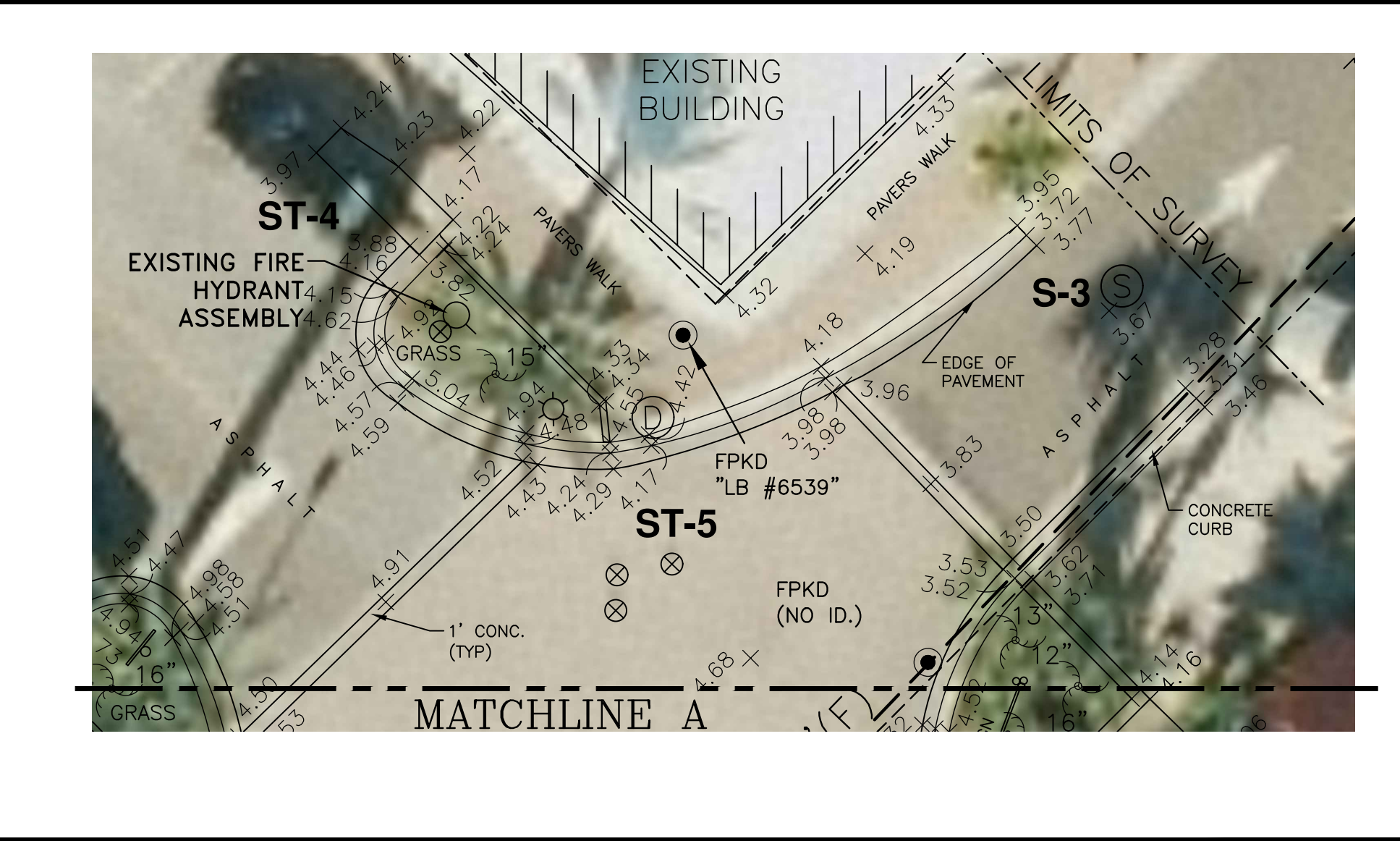
**90% DESIGN PLANS**

WORK ORDER NO.	2013-31E
DATE:	JUNE 18, 2015
SCALE:	1" = 10'
SHEET NO.	5 OF 5



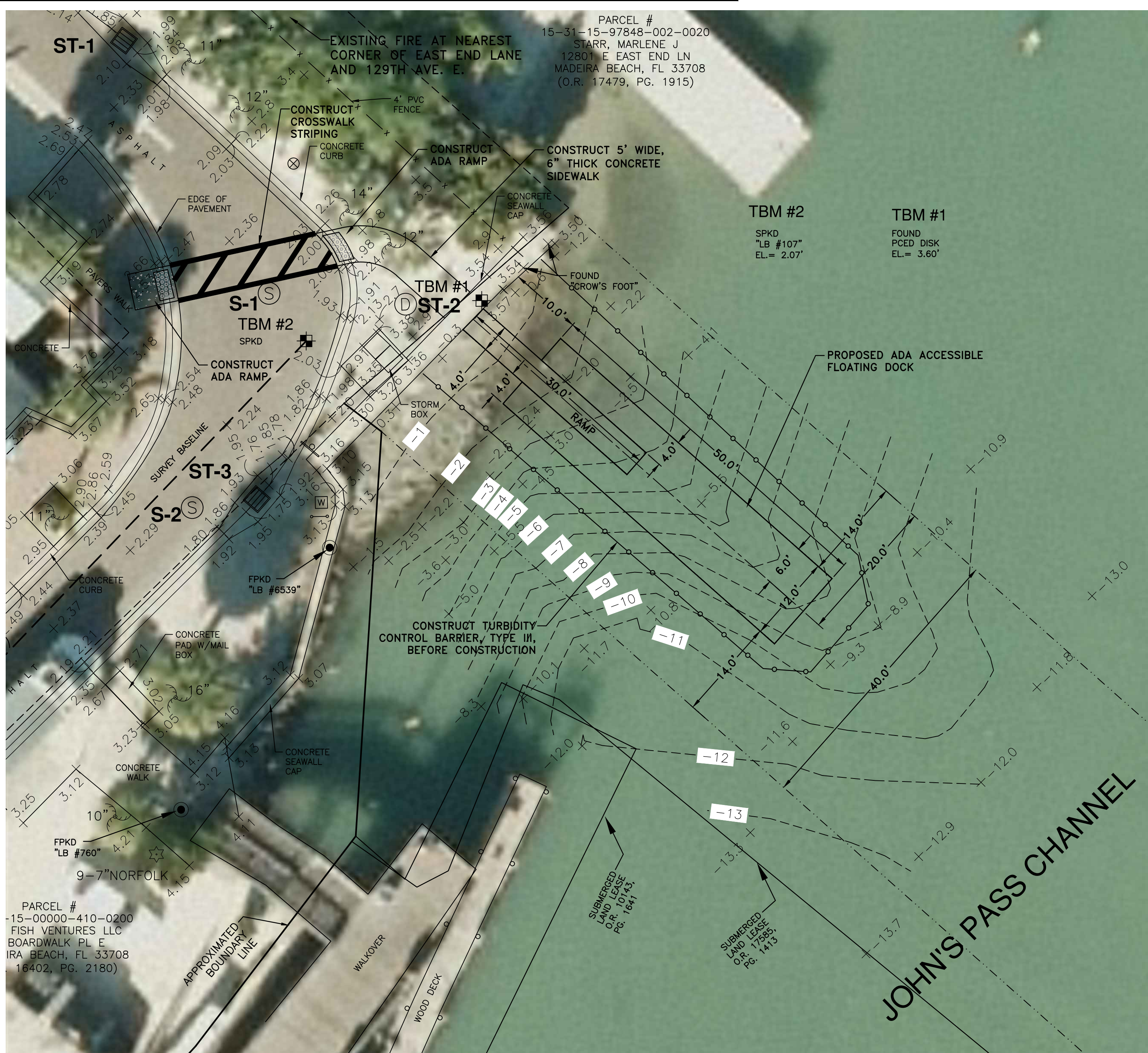
PROPOSED DOCK  
AT BOARDWALK

MHHW = 0.81'  
MHW = 0.46'  
MLW = -0.98'



PROPOSED DOCK  
NORTH OF BOARDWALK

MHHW = 0.81'  
MHW = 0.46'  
MLW = -0.98'



PROPOSED DOCK  
NORTH OF BOARDWALK

MHHW = 0.81'  
MHW = 0.46'  
MLW = -0.98'

**90% DESIGN PLANS**

Site: 02\_10\_2015 - 3:31pm - C:\CAD Projects\Projects\2013\2013-31 Madeira Beach Transient Dock\Engineering\West\2013-31E-005 PLANS.dwg

REV.#	DATE	REVISION	BY	CHECKED

DESIGN: BAB  
DRAWN: DES  
CHECKED: APC

**DEUEL & ASSOCIATES**  
CONSULTING ENGINEERS LAND SURVEYORS LAND PLANNERS

565 SOUTH HERCULES AVENUE  
CLEARWATER, FL 33764  
PH 727.822.4151 FAX 727.821.7255  
WWW.DEUELENGINEERING.COM  
CERTIFICATE OF AUTHORIZATION NUMBER 26320  
LICENSED BUSINESS NUMBER 107

JOHN'S PASS BOARDWALK  
SITE PLAN WITH AERIAL  
MADEIRA BEACH FLORIDA

I, AL CARRIER, HEREBY CERTIFY AS A LICENSED PROFESSIONAL ENGINEER, REGISTERED IN ACCORDANCE WITH FLORIDA STATUTE 471 (481) THAT THE ABOVE PROJECT'S SITE AND/OR CONSTRUCTION PLANS, TO THE BEST OF MY KNOWLEDGE, INFORMATION AND BELIEF, WILL MEET APPLICABLE DESIGN CRITERIA SPECIFIED BY CITY MUNICIPAL ORDINANCE, STATE AND FEDERAL ESTABLISHED STANDARDS. I UNDERSTAND THAT IT IS MY RESPONSIBILITY AS THE PROJECT'S PROFESSIONAL ENGINEER TO PERFORM A QUALITY ASSURANCE REVIEW OF THESE SUBMITTED PLANS.

WORK ORDER NO.	2013-31E
DATE:	AUGUST 11, 2015
SCALE:	1" = 10'
SHEET NO.	1 OF 1

ALBERT P. CARRIER, P.E., 53990