

2021 Connect



When soft spring rains, the bees are busy with beautiful blossoms. The bees take nectar from the flowers and turn it into honey.

12

CENTRALIA

Bees carry pollen from one flower to another. This is called pollination, and is an essential step in growing the fruit and other foods we eat!

Timberland Regional LIBRARY

Timberland Regional
LIBRARY

BOARD OF TRUSTEES



Nicolette Oliver
President/Member-at-Large
Thurston County



Jasmine Dickhoff
President Elect
Grays Harbor County



Bob Hall
Pacific County



Brian Zylstra
Lewis County



Hal Blanton
Member-at-Large
Lewis County



Kenneth Sebby
Mason County



Vacant
Thurston County

Board Approved Projects in 2021

Opening of two new demonstration libraries, West Olympia (Opened Spring 2021) and Hawks Prairie (Opening early 2022).

Requested staffing levels, including salaries and benefits be at 68% of the annual budget. Reached 68% in March 2021.

The extension of the Strategic Direction two additional years to end in 2024.

Approved the purchase of land in Randle, Lewis County for a new Mountain View Timberland Library.

Due to COVID supply chain issues, Mobile Services Vans (approved 2020) were put on hold and are currently in reevaluation for a more cost effective solution within available markets.



Bob Hall retires from the Timberland Regional Library Board of Trustees. With gratitude and appreciation for his dedicated service representing Pacific County as a Trustee from 2006 to 2021.

Timberland Regional Library (TRL) recognizes that we operate within the traditional territories of the Coast Salish people and Chinook people who have been the stewards of these lands since time immemorial. TRL provides library services to Indian tribes, extending beyond the geographic limits of Lewis, Mason, Thurston, Pacific, and Grays Harbor Counties. This acknowledgment reminds us to strive for respectful partnerships with all people, as we search for collective healing and learn how to be better stewards of the indigenous lands we inhabit.

MESSAGE FROM EXECUTIVE DIRECTOR



“A library in the middle of a community is a cross between an emergency exit, a life-raft and a festival. They are cathedrals of the mind; hospitals of the soul; theme parks of the imagination. On a cold rainy island, they are the only sheltered public spaces where you are not a consumer, but a citizen instead.” —Caitlin Moran

This quote not only stirs the soul, it also illustrates the role of each of Timberland Regional Libraries’ (TRL) 28 libraries (soon to be 29) in our communities, as we entered the second year of the pandemic.

Throughout 2021, working closely with the Board of Trustees and staff, we:

- Continued to focus on equity, diversity and inclusion in the libraries, a wide array of programs and services, collections, Human Resources and more.
- Reclassified 13,000 picture books into 14 general themes so that toddlers, preschoolers and their caregivers could find new reading adventures more easily.
- Added Playaways (preloaded audiobooks for all ages); Vox books for children (talking books in English and Spanish); Launchpads with preloaded STEM and literacy for Birth to 5 years of age; and ABCmouse.com, an early learning (ages 2-8) resource for reading, math and science, and so much more.
- Refreshed Packwood, Raymond, Tenino, North Mason libraries; refreshed exterior at the Hoodspout, Naselle and Amand Park libraries; and more – all to make your libraries more welcoming.
- Opened the 28th library, a “Lucky Day Demonstration” popular collection library at Capital Mall with a 2-year lease.

On behalf of 255 staff and the Board of Trustees, I hope you enjoy the highlights of an extraordinary year,

Cheryl

Hi,

I use the Centralia Branch and have always had excellent service, both with the folks at that branch and with my frequent Interlibrary loans.

But it's gotten even better than that!

I recently read about a book that really piqued my interest ("After Jesus Before Christianity"). It's a new one and thus too expensive for me to buy. But I was dying to read it.

TRL didn't have it so I put in a request to purchase it. I was "warned" that not all such requests could be honored (which I certainly can understand).

Anyway, within a few weeks of my request, the book had been bought by you and was on its way to me. And today, it's arrived.

I can't thank all of you enough for your beyond excellent service. I'm from New York City originally, and I can honestly say that Timberland gives me as much access to books as NYC's system did.

My very best wishes to all of you!

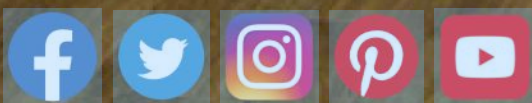
Artie R.



TABLE OF CONTENTS

New Location West Olympia.....	3
Playaway, Launchpads, and Vox Books.....	4
Celebrating Communities	5
TRL Anywhere	7
Picture Book City	9
TRL StoryTrail.....	13
Behind the Scenes	20
Beauty of Community.....	22
Financials	28

FOLLOW



CONTACT

Timberland Regional **LIBRARY**
415 Tumwater Boulevard SW
Tumwater, Washington 98501-5799
asklib@TRL.org • 360.943.5001 • TRL.org

2020-2024 STRATEGIC DIRECTION

The Timberland Regional Library Strategic Direction for 2020-2024 was developed through community and staff participation with our Board of Trustees strategic planning committee.

We appreciate the time and effort that was given to understand the needs within the community, identify areas of focus that we assist with, and then align our resources to create positive change in those areas.



MISSION

Welcoming everyone to a vibrant world of possibilities.
Connecting people, places, and ideas.
Evolving to meet the needs of our communities.



VISION

Libraries connecting to our communities.



WE VALUE

Access for all. Working together. Diverse communities and ideas.
Responsible use of public resources.



BORROW

Assistive Devices
eBooks and Books
Movies
Audiobooks



PARTICIPATE

Storytimes
Book Groups
Arts & Crafts
Meeting Space



DISCOVER

Legal Forms
Auto Repair
Homework Help
History & Genealogy



CONNECT

Wifi
Printing
Computers
Job Search



LOCAL COMMUNITIES

- Sharing local culture.
- Increasing our presence in under-served communities.
- Creating opportunities for inter-generational connection.
 - ✓ New Location in West Olympia
 - ✓ TRL Anywhere Mobile Services
 - ✓ Popup Library
 - ✓ StoryTrails



EQUITY, DIVERSITY, AND INCLUSION

- Reaching those with disabilities and other access barriers.
- Reflecting under-represented groups in our collections, staff, and services.
- Partnering with local agencies and organizations to support diverse communities.
 - ✓ New Location in West Olympia
 - ✓ TRL Anywhere Mobile Services
 - ✓ Playaways, Launchpads, and Vox Books (New Technology)
 - ✓ Celebrating Communities
 - ✓ New Online Resources



CHILDREN FROM BIRTH TO FIVE

- Providing appealing spaces and engaging experiences.
- Clarifying what they need and how to provide for those needs.
- Empowering them to build relationships with the library & within their communities.
 - ✓ Picture Book City
 - ✓ Playaways, Launchpads, and Vox Books (New Technology)
 - ✓ ABCmouse Home Access

NOW OPEN



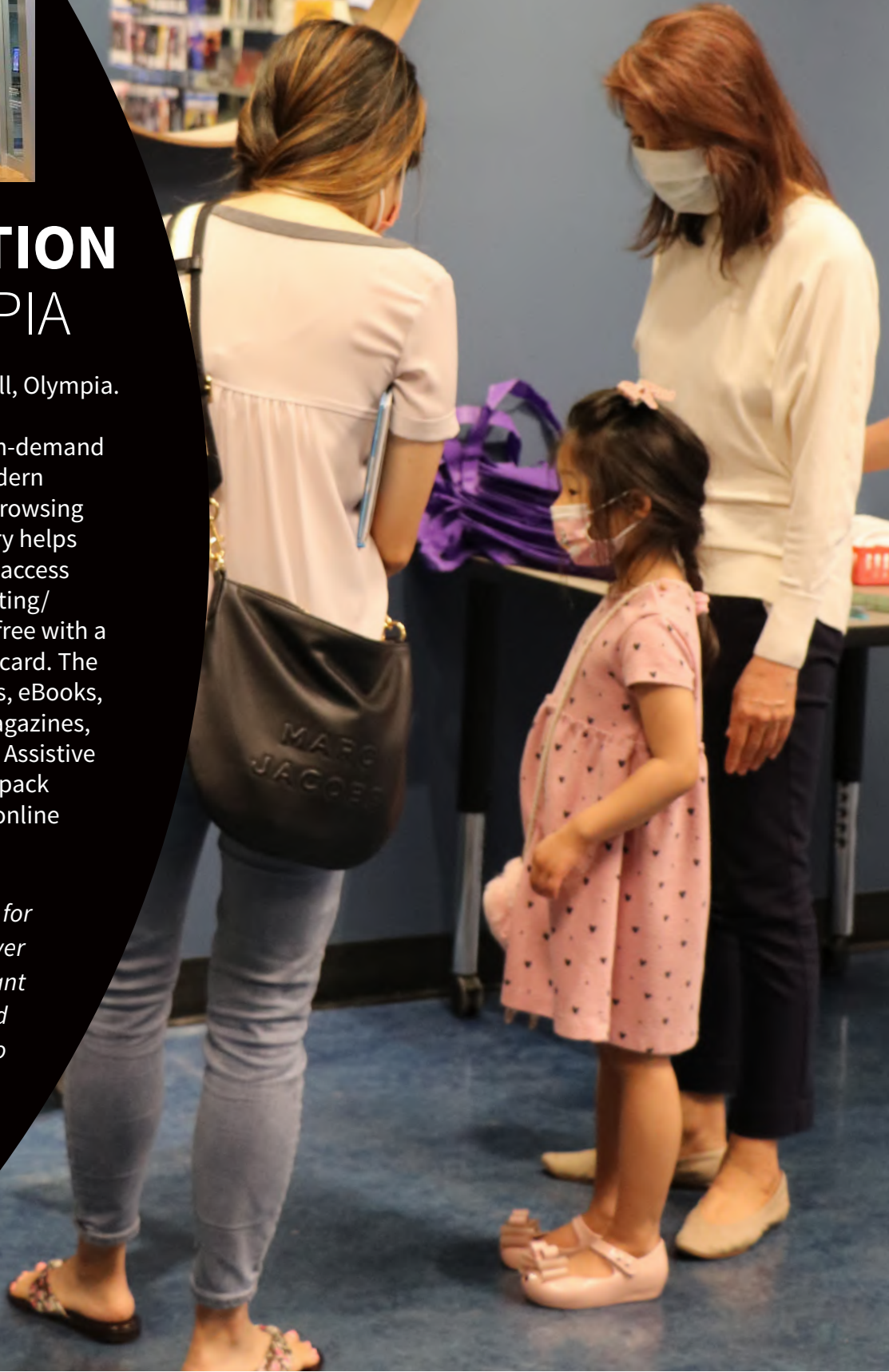
NEW LOCATION WEST OLYMPIA

Opened June 1 in Capital Mall, Olympia.

Offers the newest and most in-demand books and movies with a modern layout that promotes quick browsing and computer use. This library helps bridge the digital divide with access to Wi-Fi, computers, and printing/scanning/faxing services, all free with a Timberland Regional Library card. The TRL collection includes books, eBooks, CDs, DVDs, eAudiobooks, eMagazines, Playaways, Library of Things, Assistive Devices (WATAP), Zines, Backpack kits for outdoor adventures, online resources, and much more!

"This is the smartest location for a new library. Bravo to whoever made this happen. People want to be in a safe place, read and get books, get a coffee and go for a walk. This lets us do all those things in one place. Thank you. Genius and remarkable."

*- Lindsey, TRL
Patron*



NEW FORMATS

PLAYAWAYS, LAUNCHPADS, & VOX BOOKS

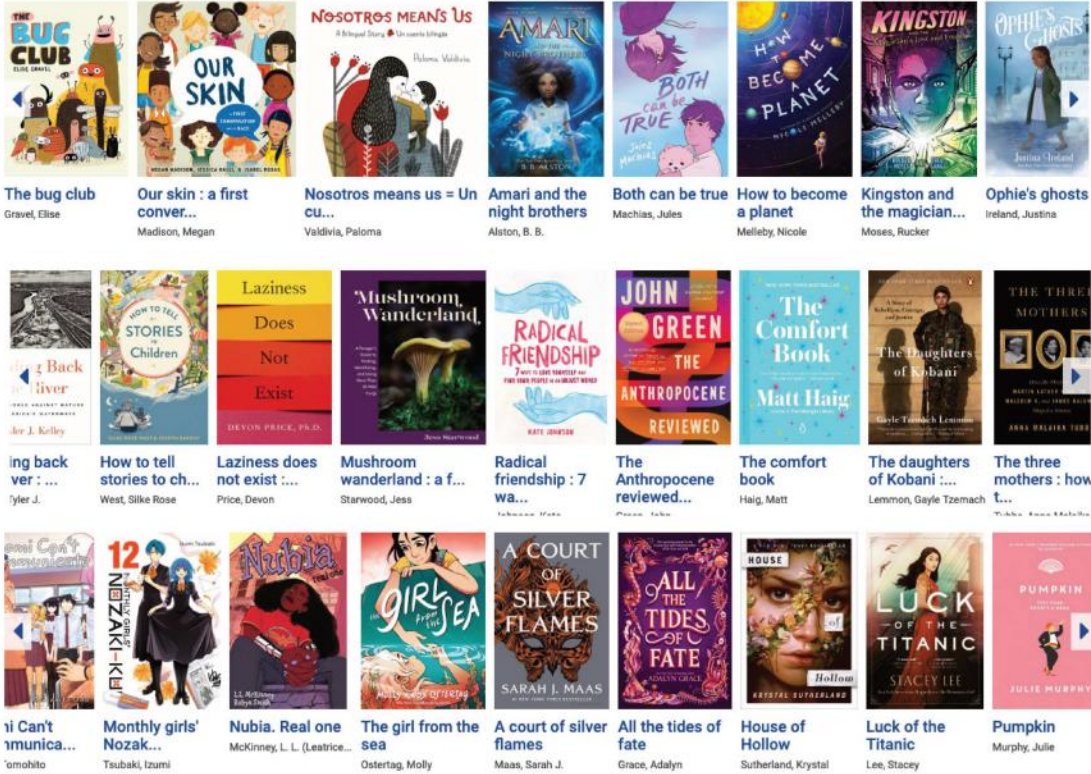
Technology to help bridge the gap on learning how to read.

My family loves them so much. These kids will walk forever listening to them. Actually they have walked 8 miles listening to them because I took them on an urban hike trying to find a magical trail from Mission Creek Nature Trail to Priest Point Park and we never found it, but we made it to Priest Point Park and back and the kids didn't kill me because of the play-a-ways. In the pictures Juniper is listening to Harry Potter (the first book). I love her reactions so much. Ollie is listening to To Night Owl from Dogfish, which both kids have listened to now. The play-aways have allowed them to connect with books together that they wouldn't have otherwise.

- Amanda L (patron)



CELEBRATING COMMUNITIES



The bug club
Gravel, Elise

Our skin : a first conver...
Madison, Megan

Nosotros means us = Un clu...
Valdivia, Paloma

Amari and the night brothers
Alston, B. B.

Both can be true
Machias, Jules

How to become a planet
Melleby, Nicole

Kingston and the magician...
Moses, Rucker

Ophie's ghosts
Ireland, Justina

Coming back to live
Tyler J.

How to tell stories to ch...
West, Silke Rose

Laziness does not exist :...
Price, Devon

Mushroom wanderland : a f...
Starwood, Jess

Radical friendship : 7 wa...
Johnson, Katy

The Anthropocene reviewed...
Price, John

The comfort book
Haig, Matt

The daughters of Kobani :...
Lemmon, Gayle Tzemach

The three mothers : how t...
Walker, Anna

I Can't Communicate
Tomohito

Monthly Girls' Nozaki...
Tsubaki, Izumi

Nubia. Real one
McKinney, L. L. (Leatrice...

The girl from the sea
Ostertag, Molly

A court of silver flames
Maas, Sarah J.

All the tides of fate
Grace, Adalyn

House of Hollow
Sutherland, Krystal

Luck of the Titanic
Lee, Stacey

Pumpkin
Murphy, Julie

October is
Dyslexia Awareness

Available at

TRL.org

Search Dyslexia in our catalog for list of available materials.

ADHD
AWARENESS MONTH
OCTOBER 2021

Myth: Everyone has a little ADHD!

Fact: Everyone does not have a physical difference in their brain.

Timberland Regional LIBRARY Learn more at www.AHDawarenessMonth.org

LGBTQIA+
History Month 2021

31 Days and 31 Icons will celebrate the achievements of 31 lesbian, gay, bisexual or transgender Icons.

www.LGBHistoryMonth.com

Timberland Regional LIBRARY events.TRL.org

© Washington Tribes, 2020

HISPANIC
heritage month

5

kanopy

CELEBRATE
FILIPINO
AMERICAN
history month

Books, eBooks & audiobooks celebrating Filipino American authors & history.
Additional titles available on TRL.org and TRL OverDrive

Timberland Regional LIBRARY

CELEBRATE
NATIVE AMERICAN
HERITAGE MONTH

Timberland Regional LIBRARY TRL.org



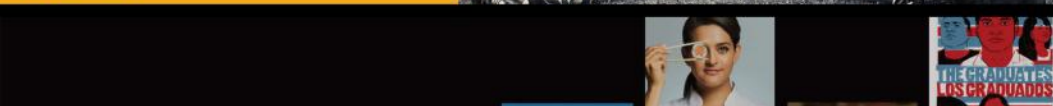
RESEARCH WITH PRIDE



Transform your understanding of gay rights movement and the development of LGBTQ culture and activism around the world with Gale's Archives of Sexuality and Gender: LGBTQ History and Culture Since 1940.

NATIVE AMERICAN HERITAGE MONTH

Explore the rich culture and histories of America's Native People with Gale In Context: U.S. History.



10 Films to Watch for Hispanic Heritage Month



Throughout 2021, TRL shared out curated book lists, promoted awareness campaigns using social media, designed home page web banner, and listed online resources with similar content.

Today I walked into the Olympia branch and saw the entire space opened up. I admit it - I jumped for joy! And I wanted to cry. I have missed my library and all the wonderful staff so so much. The Oly branch is such a special space to me. Thank you for helping us get through the pandemic. You were one of my lifelines. I am deeply grateful for the space and knowledge you share with our community. Patron email to AskLib@TRL.org

EDI Action Highlight:
Created a special Pride Staff Picks page in celebration of Pride Month. Featured Lambda Literary Award-winning books on homepage.

TRL ANYWHERE MOBILE SERVICES

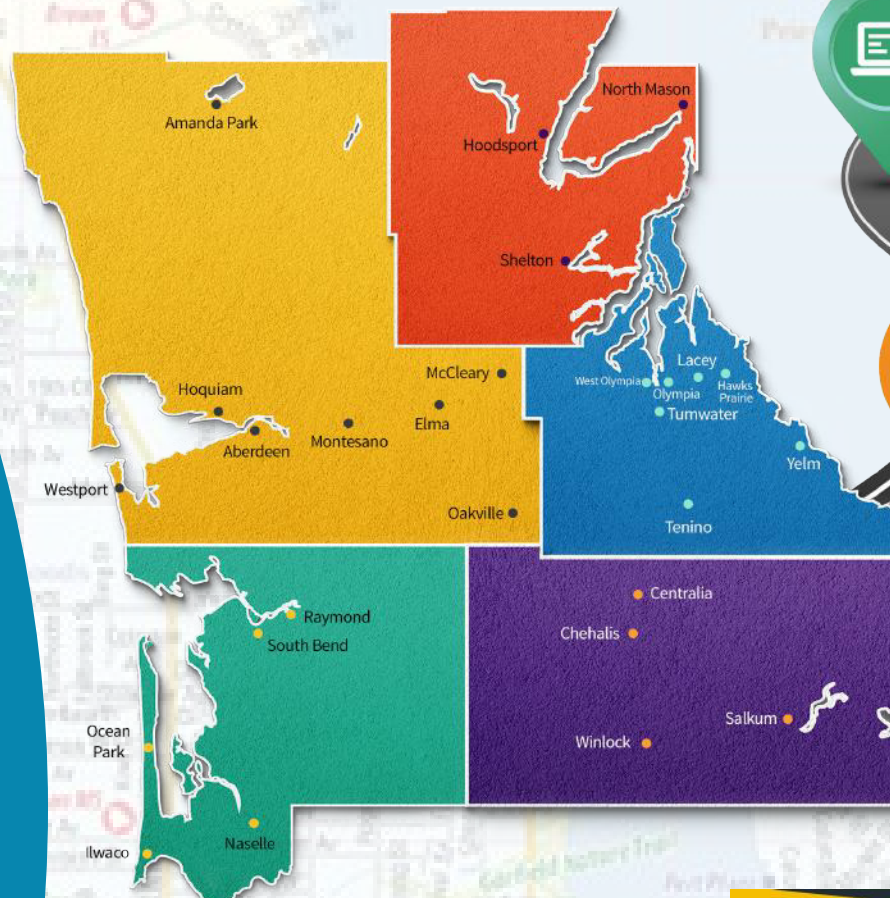
TRL is focused on identifying ways to provide comprehensive services to communities and district residents that do not have access to physical branches due to distance to the branch, hardships, or physical accessibility issues. While we work with partners to secure the vehicles and equipment needed to fully launch our mobile services by the end of 2023, we will provide “Pop-Up Libraries” throughout our 5-county service area.

Look for a Pop-Up Library near you!

EDI Action Highlight:

Youth mobile services guide in progress. Will include EDI practices for serving youth and families through mobile services to guide staff.

Organize Community Conversations across the district to engage with the public and start a dialogue. Process started and ongoing.



FROM OUR PATRONS

Awesome loved it when the Bookmobile came when we lived in small towns. YAY

This makes me so happy for those who can't get to Randle or Salkum libraries.

Yay for the community!!!

**POP
EVERY**

**COWLITZ
HISTORIC
194 Main**

Timberland R

SERVING NEW COMMUNITIES



**MORTON
P-UP LIBRARY**
FIRST THURSDAY 1PM-3PM



**RIVER VALLEY
LOCAL SOCIETY**
n Ave, Morton



TAKE HOME BOOKS, DVDS, &
MORE. GRAB A TAKE & MAKE
CRAFT BAG, PRINT
DOCUMENTS, & CONNECT WITH
LIBRARY STAFF!

regional **LIBRARY** • TRL.org



PICTURE BOOK CITY

Genres

Animals: Stories about all kinds of animals, both domestic and wild.

Bedtime: Stories about bedtime, dreams, and saying goodnight.

Community: Stories about making a difference and sharing a world with others. Includes activism, sharing, kindness, neighborhoods, friendship, and more.

Dinosaurs: Stories about, well, dinosaurs!

Emotions: Stories about all the feels! Includes mad, sad, happy, anxious, scared, and more. Explore: Stories about exploring our world and beyond! Includes science, space, nature, and more.

Families: Stories about all the different ways a family can look. Includes new siblings, adoption, divorce, and more.

Go: Stories about planes, trains, and automobiles! Includes all types of vehicles and modes of transportation.

Growing Up: Stories about big life firsts, identity, and self-expression. Includes potty training, starting school, manners, moving away, neurodiversity, gender identity, and more.

Imagine: Stories about common roles that come up during imaginative play! Includes mermaids, monsters, unicorns, princesses, superheroes, pirates, and more.

Learning: Stories that support early learning needs. Includes ABCs, 123s, colors, shapes, opposites, size, and time.

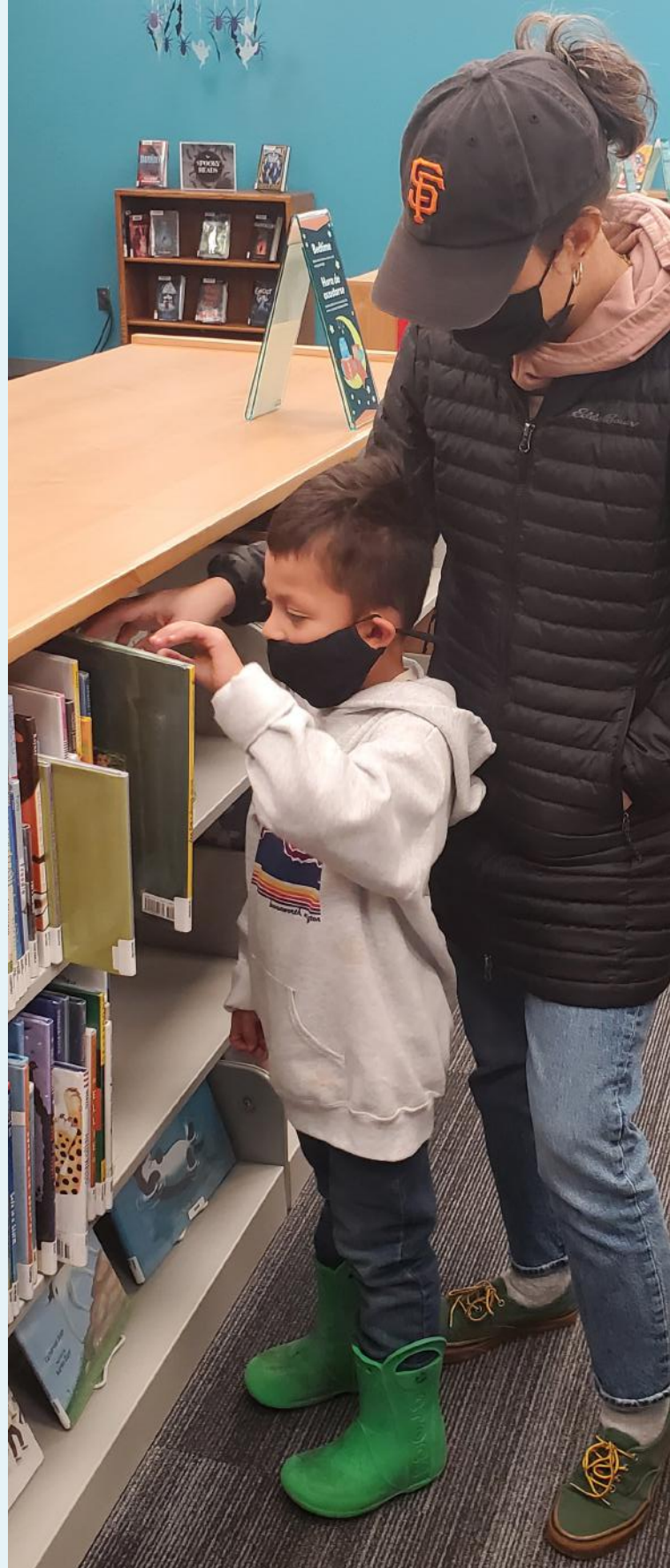
Popular: Popular characters shelved together.

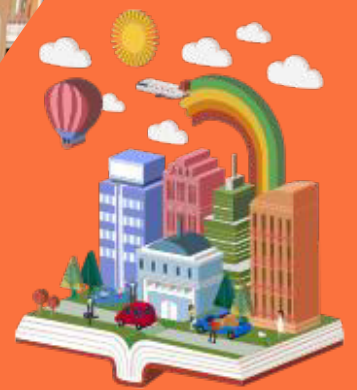
Seasonal: Stories about holidays, seasons, and seasonal activities. Includes snow, pumpkin patches, holidays of all varieties, and more.

Stories: Books that defy categorization!

EDI Action Highlight:

Began the Picture Book City project included categories that were evaluated and selected through an anti-racism lens. This project will increase accessibility to the collection for young children and their caregivers.





Picture Book City is a reclassification of TRL's picture book collection into genres to facilitate browsing for children and their adults. After Alexis Hardy and Muriel Wheatley's successful pilot of the project at the Centralia library, TRL decided to roll out picture book reclassification district-wide.

From May 2021-September 2021 over 13,000 unique titles (approximately 36,000 books!) were relabeled and moved into one of 14 genres. The genres were chosen to highlight common patron requests, as well as early learning priorities.



NEW ONLINE RESOURCES

Britannica Escolar



Enciclopedia español para los estudiantes mas jovenes y educadores

- **Completa enciclopedia española** para studiantes en primaria y secundaria
- **Acceso universal**
- **Incluye artículos, imágenes, mapas, tablas, líneas de tiempo, así como un diccionario completo y atlas**

Para más recursos escolares visite: TRL.org/reference-databases

escolar.eb.com





Beginning on **March 10**

We are excited to announce **Timberland Regional Library** is now partnering with **LinkedIn Learning** for new, on-demand learning content!

Over 6,000 on-demand professional skills courses.





ABCmouse®

Free access to ABCmouse is now available from anywhere with your Timberland Regional Library Card & PIN number.

My Learning Path Classroom

Zoo Map Farm

What's New! Featured Activities Things to Do

Visit TRL.org/reference-databases for a list of all available resources.



DON'T GOOGLE IT— START YOUR SEARCH WITH GALE

Google is often the go-to source for research, but the results are not always accurate. Gale OneFile collections connect you to credible articles from leading magazines, newspapers, and scholarly journals. Plus, integrated tools make sharing content easy!

Why wait?
Access Gale resources today. Talk to your librarian if you need help getting started.



GALE
A Cengage Company

GET A HEALTHY HELPING OF TRUSTED SOURCES

Gale Health and Wellness

GET STARTED



Available in App Store.

ABCmouse (Home Access): ABCmouse.com offers the most comprehensive online curriculum for children ages 2–8+, including reading and language arts, math, beginning science, social studies, art and music.

Northstar Digital Literacy: Tests your computer skills. Build skills in key areas, and demonstrate knowledge by earning certificates and badges.

PressReader: Get access to more than 7,000 of the world's top newspapers and magazines. Find content from over 120 countries in 60 different languages.

Britannica Escolar (Español): Un excelente recurso digital en español que ayuda a enriquecer el aprendizaje de los estudiantes de primaria y secundaria.

Britannica Moderna (Español): es el portal confiable y actualizado que le brinda una gran variedad de contenidos para desarrollar sus trabajos académicos.

Gale Academic OneFile: Quickly access articles from a database of scholarly journals and trusted periodicals.

Gale Business Insights: Global: Compare global economies, countries, and industries with in-depth analysis on over 400,000 companies.

Gale Business: Entrepreneurship: Learn how to start, finance, or manage your small business.

Gale General OneFile: Access general interest magazines and key serials in a single resource.

Gale in Context: Elementary: Learn about animals, plants, music science, sports, and more.

Gale OneFile: Informe Academico: Una colección de revistas y revistas académicas en español y portugués de texto completo sobre América Latina.

LinkedIn Learning: Learn software, technology, creative, and business skills with over 16,000 courses and expanded language options.

Tip: Click on the title to visit the resource.
Requires your Timberland Library Card and Pin number.



Enjoy a nature walk and a great book at the same time!

¡Disfruta de un paseo por la naturaleza y de un gran libro al mismo tiempo!



2021 STORYTRAILS

Grays Harbor County
Elma Library StoryTrail
Westport Library StoryTrail

Lewis County
Centralia Library StoryTrail
Mountain View Library StoryTrail
Packwood Library StoryTrail
Salkum Library StoryTrail

Mason County
Hoodspport Library StoryTrail
North Mason Library StoryTrail

Pacific County
Ilwaco Library StoryTrail
Naselle Library StoryTrail
Ocean Park Library StoryTrail
Raymond Library StoryTrail
South Bend Library StoryTrail

Thurston County
Lacey Library StoryTrail
Olympia/West Olympia Library StoryTrail
Yelm Library StoryTrail

Summer LIBRARY PROGRAM

June 1 – September 30

Participants of all ages were able to earn 2 books! Like last year, programs were held over Zoom.

Thank you to the performers: Teachers of Nature, Javoen Byrd from the Hawk Foundation for Research and Education in African Culture, and Silver Kite.

EARN 2 BOOKS!

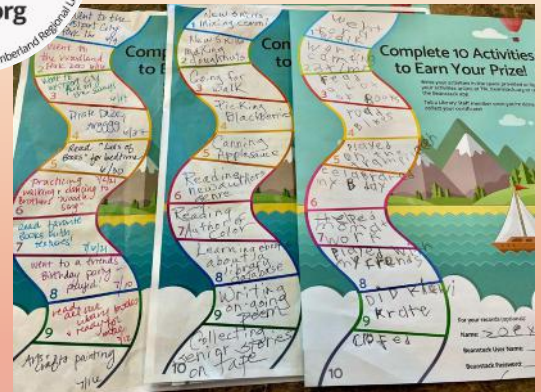


FIND IT THURSTON COUNTY

¡ENCONTRARLO EN THURSTON COUNTY!



Lacey
Olympia
Tenino
Tumwater
Yelm



Visit Thurston County libraries, parks, and other community spaces and find the items on this passport. Visit any Thurston County library (Lacey, Olympia, Tenino, Tumwater, West Olympia, or Yelm), show us your passport, and get a small prize!

EDI Action Highlight:

All Summer Library Program activity logs, school letters, and promotional pieces (videos, social media) available in English and Spanish with different formats (print/digital, audio/text).

Book prizes included several different formats and both Spanish and English options.

#TRLSUMMER2021



**To enhance STEAM education
NASA@ My Library Partners
will hold public programs
that explore NASA science
and technology.**

Olympia Timberland Library is one of 60 U.S. public libraries that were selected through a competitive application process to become NASA@ My Library Partners. Approximately 150 libraries applied to be part of the program.

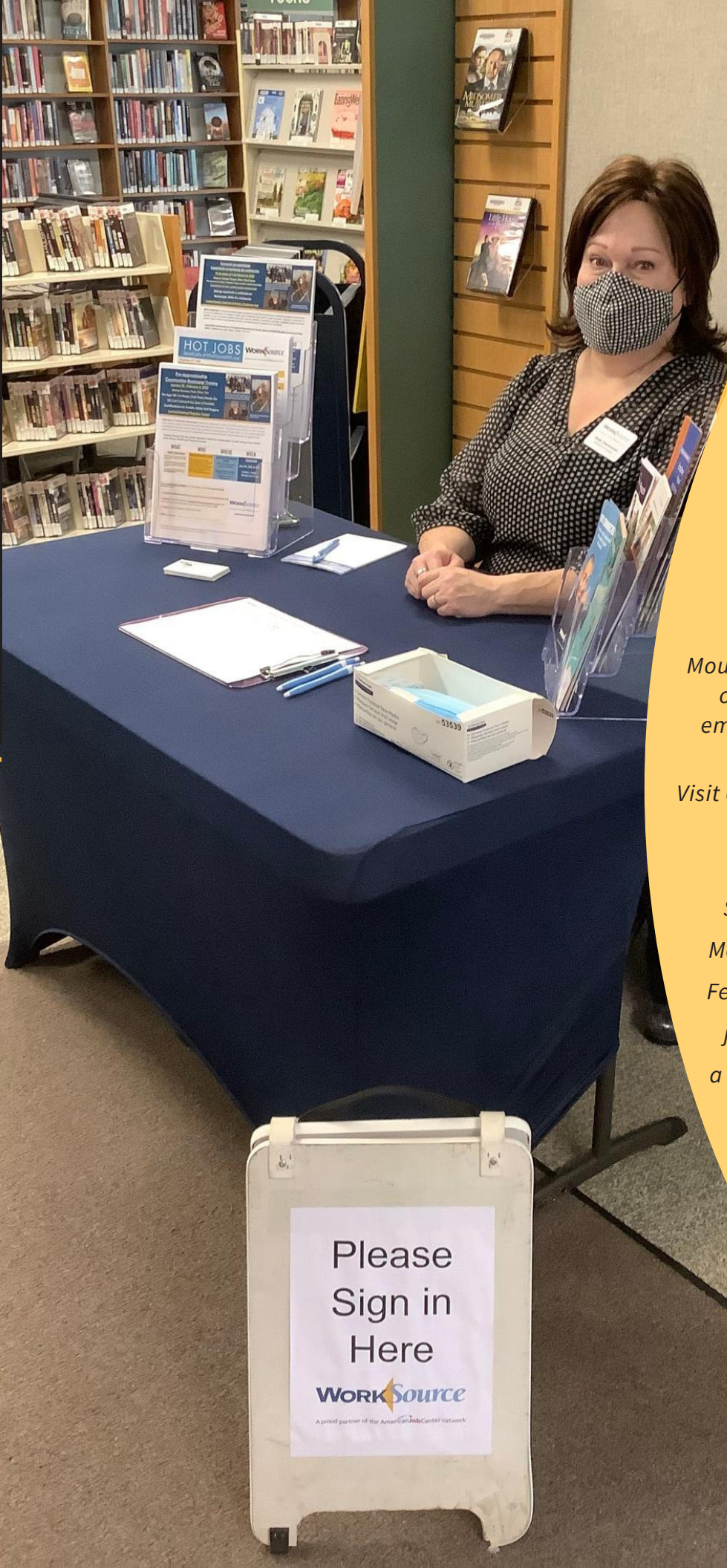
NASA@ My Library is a STEM education initiative created to increase and enhance STEAM learning opportunities for library patrons throughout the nation, including geographic areas and populations currently underrepresented in STEAM education.

19TH ANNUAL
**Latinx Youth
Summit 2021**

Presented by
The Hispanic Roundtable

Timberland Regional Library (TRL) has supported the Latinx Youth Summit (LYS) for 18 years by collaborating with Hispanic Roundtable, local colleges, and other community sponsors to organize the event.

“It is an event...that brings together Latinx high school students from across our five-county region by providing post-secondary education opportunities, a sense of community and joy,” said Betsy Storey, Timberland Regional Library public service specialist for the Olympia branch.



WorkSource

A proud partner of the American Job Center network

PACMTN PACIFIC MOUNTAIN
WORKFORCE
DEVELOPMENT

building community prosperity

29 libraries are Connection Sites in the WorkSource system.

Summer 2021: TRL worked with Pacific Mountain Workforce Development to update our online resources for those looking for employment support, career development, and small businesses.

Visit our website trl.org/groups/employment

Shelly from WorkSource set up inside the McCleary Timberland Library, January 10 - February 4, to recruit people, interested in jobs in the construction industry, and for a FREE four week training program taking place at the Satsop Business Park.

Please
Sign in
Here

WorkSource

A proud partner of the American Job Center network

WorkSource, PacMtn, TRL, and our community partners are an equal opportunity employer/program. Auxiliary aids and services are available upon request to individuals with disabilities. Washington Relay 711.



PILOT PROGRAM LIBRARY VOTING CENTER AT LACEY TIMBERLAND LIBRARY

"This is a dream partnership, one library staff are only too happy to support. We are overjoyed to be providing additional access to voting rights and registrations as part of library community services." – Holly



TRL expanded its service partnership with WestCare Foundation to open the second Veterans Connection Café (VCC) at Westport Timberland Library, available to all Veterans in Grays Harbor, Lewis, Mason, Pacific, and Thurston counties.

*Hoquiam Timberland Library Throwback.
Photo taken between 1911 - 1918.*



NEW HOURS FOR 2022

Beginning January 3, 2022, Timberland Regional Library (TRL) locations will have updated hours with some branches opening earlier and/or staying open later during the week and weekend as part of an effort to expand and adapt library access to the needs of local communities.



Montesano



North Mason



Tenino





Centralia



Winlock



Raymond



Raymond



Tenino



Raymond



LIBRARY REFRESHES

- Amanda Park
- Centralia
- Hoodspport
- Lacey
- Mountain View
- Montesano
- Naselle
- North Mason
- Packwood
- Raymond
- Salkum
- Service Center
- Shelton
- Tenino
- Winlock

NEW TAKEOUT WINDOWS

Due to COVID-19 pandemic and resulting in shutdowns, takeout windows were installed in 13 locations to allow staff to continue to serve our patrons.

- Amanda Park
- Hoodspport
- Ilwaco
- Lacey
- Naselle
- North Mason
- Ocean Park
- Olympia
- Packwood
- Salkum
- Tenino
- Westport
- Winlock

TOOLS IN THE LIBRARY

New 2022 Open Hours

Access Wi-Fi (Daily 6 a.m. to midnight)

Computer use

Walkup and online reservations available

Free Print/Scan/Fax

Remote Printing is available for pick-up during library hours

Shelf Checkout Stations

BEHIND THE SCENES

Facilities Report 2020-2021 ([View](#))

Automated Materials Handling Systems ([Video](#))

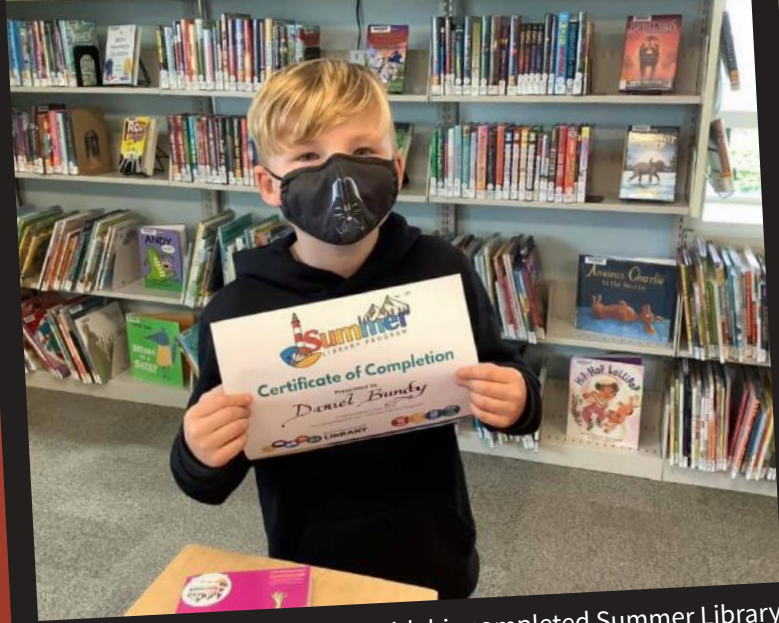
EDI Action Highlight:

Completed ADA ramp at Ilwaco.

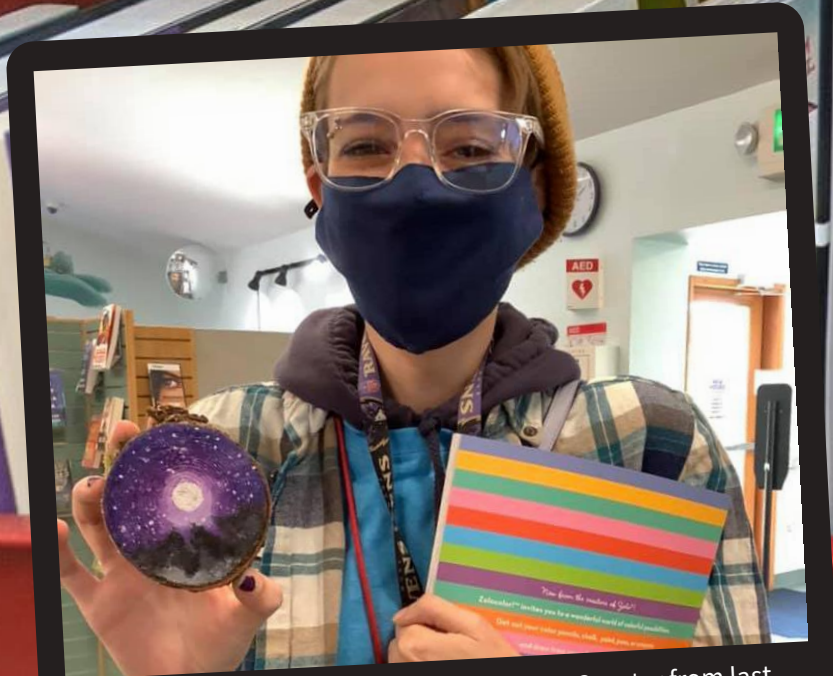
Complete ADA Audit of Library Buildings.



One of our virtual storytime families came to visit in person all the way from Olympia! Our hearts grew two sizes.
(Photo: Spring 2021 No mask mandate.)



Daniel was the first to return with his completed Summer Library Program Activities Sheet! Way to go, Daniel! He got a free book and a Certificate of Completion!



One of our patrons brought in the Night Sky Coaster from last month's Teen/Adult Take & Make! We love seeing your creations from our Kits!



Dear Librarians,

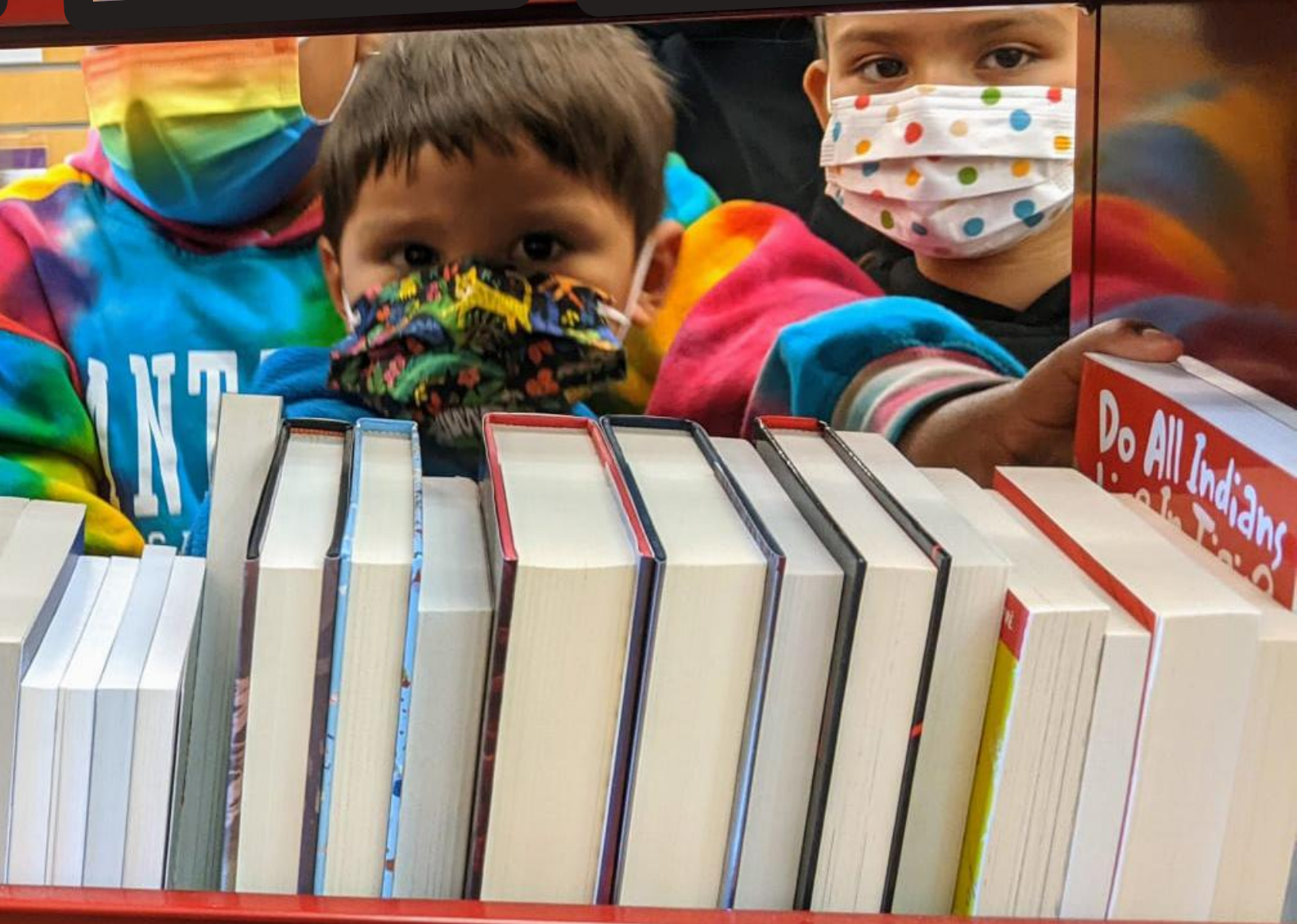
I like the books about animal because the animal books are really helpful when you have a pet.

Your Friend,

Dear Librarians,

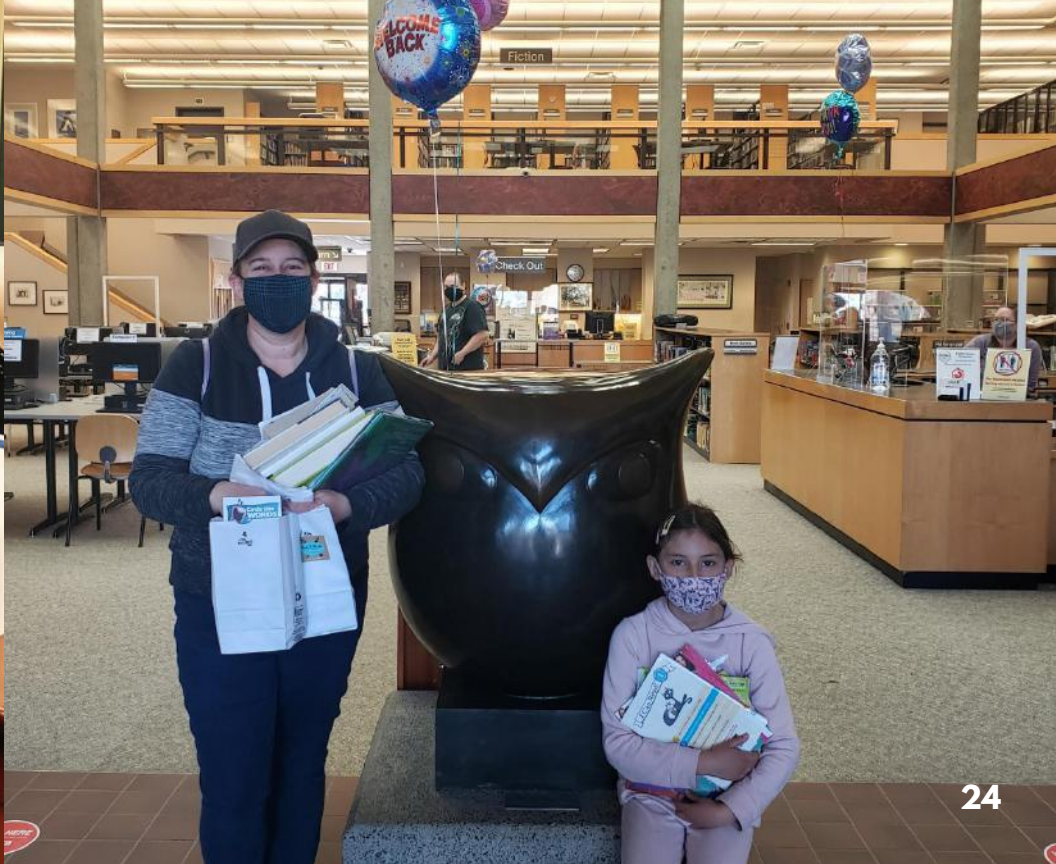
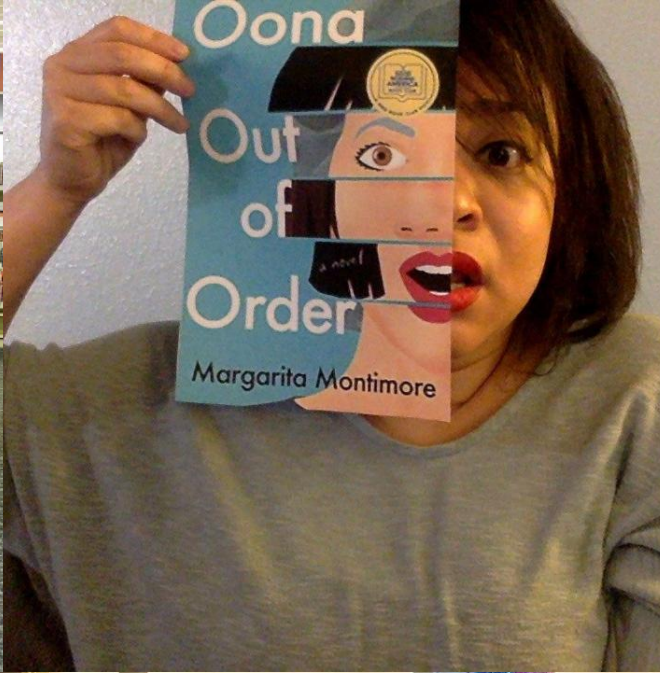
I Like the cookbook section because we can get the books. And I like art and crafts

Your friend,



THE BEAUTY OF COMMUNITY





Thank You

"Hello! My son was born deaf and now has cochlear implants. We have spent lots of time in audiology and ENT clinics; we have learned about the physical structure of the ear; and we were prepared that his brain might need help learning how to process sound with his implants. However, I never really understood how it all worked; what would be so different with the implants? How does our brain learn to listen?"

*Earlier this fall I listened to an NPR interview with Nina Kraus about her new book *Of Sound Mind*. It sounded like it was going to explain the exact things that I had been wondering about, so I checked your catalog to see if it was available as an e-book. It wasn't, so I clicked the "recommend we buy" button and exited the app without giving it much more thought. Within hours, I got an email notifying me that it was now available to check out.*

Thank you. Thank you for listening to recommendations and thank you for purchasing this book. It gave me so much insight into ways to help our son's sound mind develop and will make our next audiology visit even more fascinating! I genuinely appreciate all that you do for the community." -Beth P, TRL Patron

"I wanted to thank you for playing such an important role in my kids and my life. It means so much to me to have a memory and connection to a Librarian and community member.....Thank you so much for being an extraordinary Librarian and making a difference in this family's life!"

-Andy, Ollie, and Juniper, TRL Patrons

Hello,

Thank you for these e-newsletters. I've clicked on more links from the most recent one than any other from TRL, and appreciate all the options I never knew existed!

I also want to thank everyone who put together the Story Trails. My daughter and I are not little kids chronologically, but we adore the story at our local walking trail---- where we try to learn a little Spanish as well!

Best, Chanel

Just want each of you to know how much you are appreciated... I took for granted that the library would always be open with you all greeting and helping us. Then Covid hit and no more going to the library and kidding with the staff. No more checking out books and DVDs or looking up subjects on the computer, which we don't have at home. What a void without you and all that you do each and every day. I really did a "Happy Dance" when you opened up again. Know that we won't take you or your services for granted again. Thank you soooooo very much for being in the library for us. Stay safe

- Sherry R



Thank You to the Shelton Library for coming to read stories aloud to my Summer Jump Start students and tell us all about the Summer Reading Program and Passport to Mason County!

- Ms. Oliver's 2nd Grade Class

Good morning,
No request for services; I just wanted to thank the library staff for offering Libby and the reading of e-books. It's so convenient and of course so safe! It's a wonderful service.
With best wishes,
Linda B

I just wanted to send you an enormous THANK YOU!!!! for taking the time to call me and suggest I use the wifi at the high school in Amanda Park for my college teaching job interview. It worked wonderfully and I got the job as prof at a local community college!!! I'm from Wyoming and was in a pickle and you took the time to help me out. I cannot thank you enough!!!
Take good care,
Amy

Physical Checkouts2,041,621
 OverDrive Total.....1,369,333
 OverDrive Magazines*32,580
 RBdigital Magazines**7,106
 Kanopy.....70,768

Total Circulation 3,488,901

**OverDrive Magazine total included in the OverDrive Total*

***Discontinued 2/1/2021*

New Patrons42,880
 New OverDrive Patrons.....11,649
 Active Patrons60,697
Total Patrons 317,009

Physical Collection Total.....827,238
 New items/Orders121,896
 Processed Items106,792

PC Print Jobs235,547
 Sheets of Paper Used862,969



AskLib@TRL.org
 2,800 emails



Live Chat
 8,300+ Chats

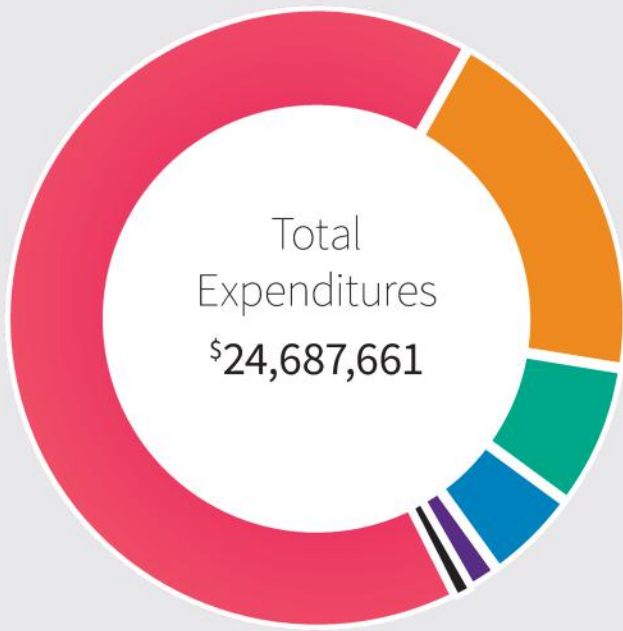


Grab Bags
 957 Bags



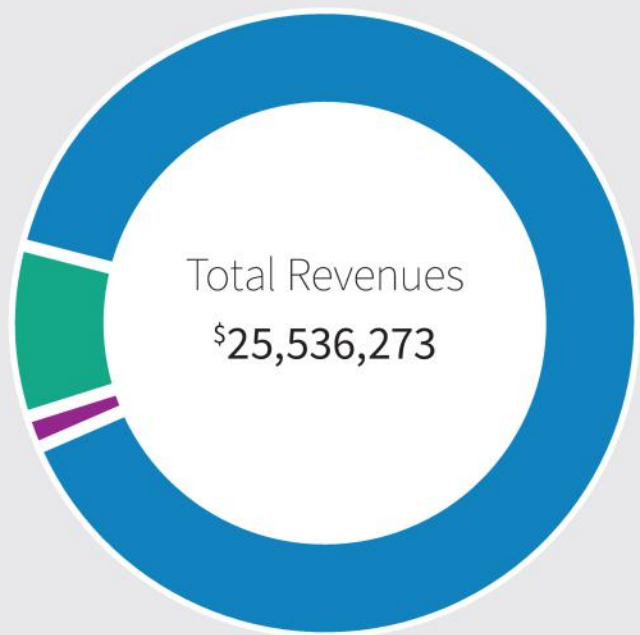
Behind
 the Scenes

Our librarians are prepared to help find the information and resources you need. Send any questions or issues to asklib@trl.org, or chat with us by clicking on the icon on our website.

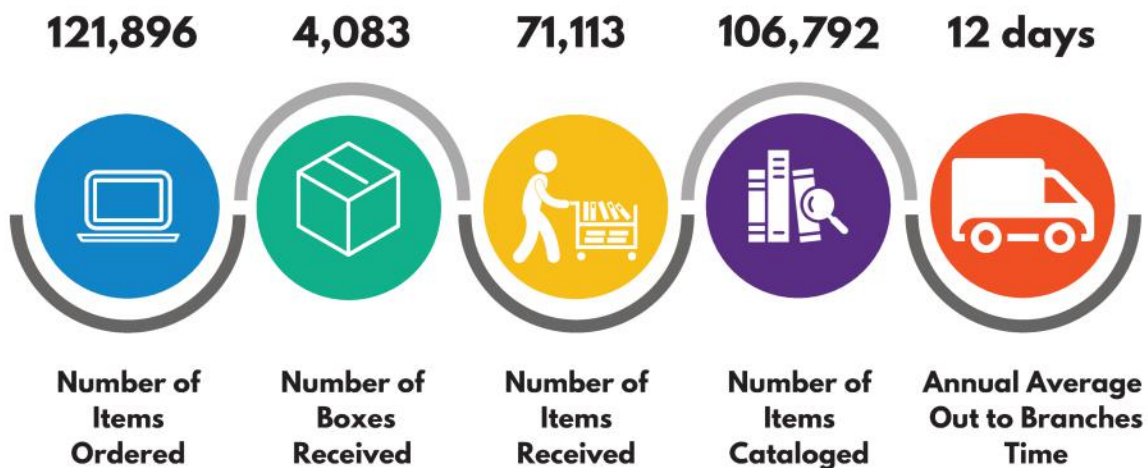


●	65.8%	Salaries & Benefits	\$16,46,590
●	19.3%	Books & Materials	\$4,758,741
●	7.6%	Other.....	\$1,879,963
●	4.9%	Professional Services	\$1,197,624
●	1.7%	Supplies.....	\$431,724
●	.7%	Capital Expenditures	\$173,019

\$22,876,424	Property Taxes	89.6%	●
\$2,246,817	Timber	8.8%	●
\$413,032	Other.....	1.6%	●



Turnaround Time for New Collection Items



Timberland Regional Library (TRL) is a public library system that provides library services to the residents of five counties in Southwest Washington State: Grays Harbor, Lewis, Mason, Pacific, and Thurston Counties. TRL is an Intercounty Rural Library District, funded by property taxes and revenue from timber sales nearly \$25.1 million.

GRAYS HARBOR COUNTY

Aberdeen Timberland Library
121 East Market Street; 360.533.2360

Amanda Park Timberland Library
6118 US Highway 101; 360.288.2725

Elma Timberland Library
119 North 1st Street; 360.482.3737

Hoquiam Timberland Library
420 7th Street; 360.532.1710

McCleary Timberland Library
121 South 4th Street; 360.495.3368

Montesano Timberland Library
W.H. Abel Memorial Library
125 Main Street South; 360.249.4211

Oakville Timberland Library
204 Main Street; 360.273.5305

Westport Timberland Library
101 East Harms Drive; 360.268.0521

North River School District
2867 North River Road; 360.532.3079

PACIFIC COUNTY

Ilwaco Timberland Library
158 1st Avenue North; 360.642.3908

Naselle Timberland Library
4 Parpala Road; 360.484.3877

Ocean Park Timberland Library
1308 256th Place; 360.665.4184

Raymond Timberland Library
507 Duryea Street; 360.942.2408

South Bend Timberland Library
1st and Pacific; 360.875.5532

Shoalwater Bay Tribal Community Library
4115 State Route 105, Tokeland; 360.267.8190

MASON COUNTY

Hoodsport Timberland Library
40 N Schoolhouse Hill Road; 360.877.9339

North Mason Timberland Library (Belfair)
23081 NE State Rt 3; 360.275.3232

Shelton Timberland Library
William G. Reed Public Library
710 W Alder Street; 360.426.1362

THURSTON COUNTY

Hawks Prairie Timberland Library 
8205 Martin Way; 360.252.9658

Lacey Timberland Library
500 College Street Southeast; 360.491.3860

Olympia Timberland Library
313 8th Avenue Southeast; 360.352.0595

Tenino Timberland Library
172 Central Avenue West; 360.264.2369

Tumwater Timberland Library
7023 New Market Street; 360.943.7790

West Olympia Timberland Library 
625 Black Lake Blvd SW; 360.764.4440

Yelm Timberland Library
210 Prairie Park Street; 360.458.3374

Book Return - Fire District 3, Station 35
3701 Willamette Drive, Lacey

Book Return - West Olympia
1313 Cooper Point Road Southwest

Rainier Book Drop at Rainier City Hall
102 Rochester Street West, Rainier

Nisqually Tribal Library
4820 She-Nah-Num Dr SE; 360.456.5221

LEWIS COUNTY

Centralia Timberland Library
110 South Silver Street; 360.736.0183

Vernetta Smith Chehalis Timberland Library
400 North Market Boulevard; 360.748.3301

Mountain View Timberland Library (Randle)
210 Silverbrook Road; 360.497.2665

Packwood Timberland Library
109 West Main Street; 360.494.5111

Salkum Timberland Library
2480 US Highway 12; 360.985.2148

Winlock Timberland Library
322 Northeast 1st Street; 360.785.3461

Morton Centralia College East Kiosk
701 Airport Way; 360.496.5022

Toledo Community Library Kiosk
241 Cowlitz Street ; 360.864.4247

As a convenience to you, most checked out items can be returned to any TRL book returns. A few specifically labeled items need to be returned to their original location.