

PGH 2025

Port of Grays Harbor | Pursuing Progress, Together

McCleary City Council

February 26, 2025



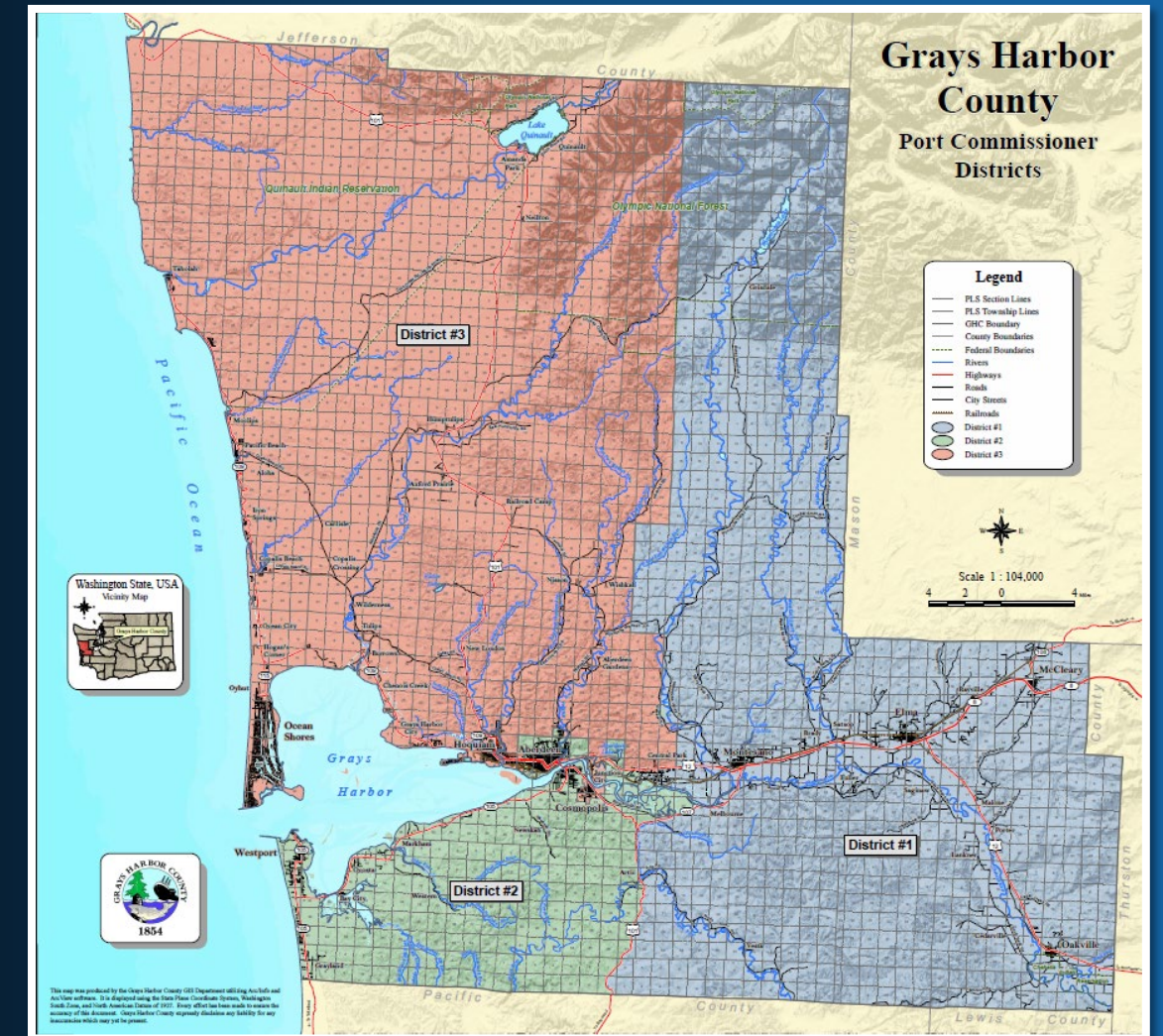
YOUR PORT

- **History**

- Chartered 1911
- 2nd oldest port district in Washington State

- **Governance**

- Elected by GH County voters
- Tom Quigg, Stan Pinnick, Phil Papac



PGH Mission



*To best utilize our resources to facilitate, enhance and stimulate **international trade, economic development and tourism** for the betterment of the region*



Lines of Business



BOWERMAN AIRPORT: Hangar & Aviation Services, Recreational Access



INDUSTRIAL PROPERTIES: Manufacturing, Distributing, Commercial, Technology



WESTPORT MARINA: Commercial & Recreational Fishing, Manufacturing, Processing, Tourism



SATSOP BUSINESS PARK: Manufacturing, Energy, Office Space



PUBLIC ACCESS & RECREATION: 28th Street Landing, Aberdeen Landing, Westport Viewing Tower, Sterling Landing, Friends Landing



MARINE TERMINALS: Export/Import, Intermodal



NAVIGATION SERVICES: Pilots, Ship Assist



Satsop Business Park



SATSOP BUSINESS PARK

BIG ENERGY,
SECURING OUR FUTURE, &
REACHING OUR POTENTIAL

Energy Hub: Supports largest natural gas plant in region, infrastructure to serve future power production

Workforce Training and Education: Brought 1,100 high school students to Try A Trade

Capacity for growth: 300,000 sq. ft. currently leased with 200,000 sq. Ft. available plus buildable acreage



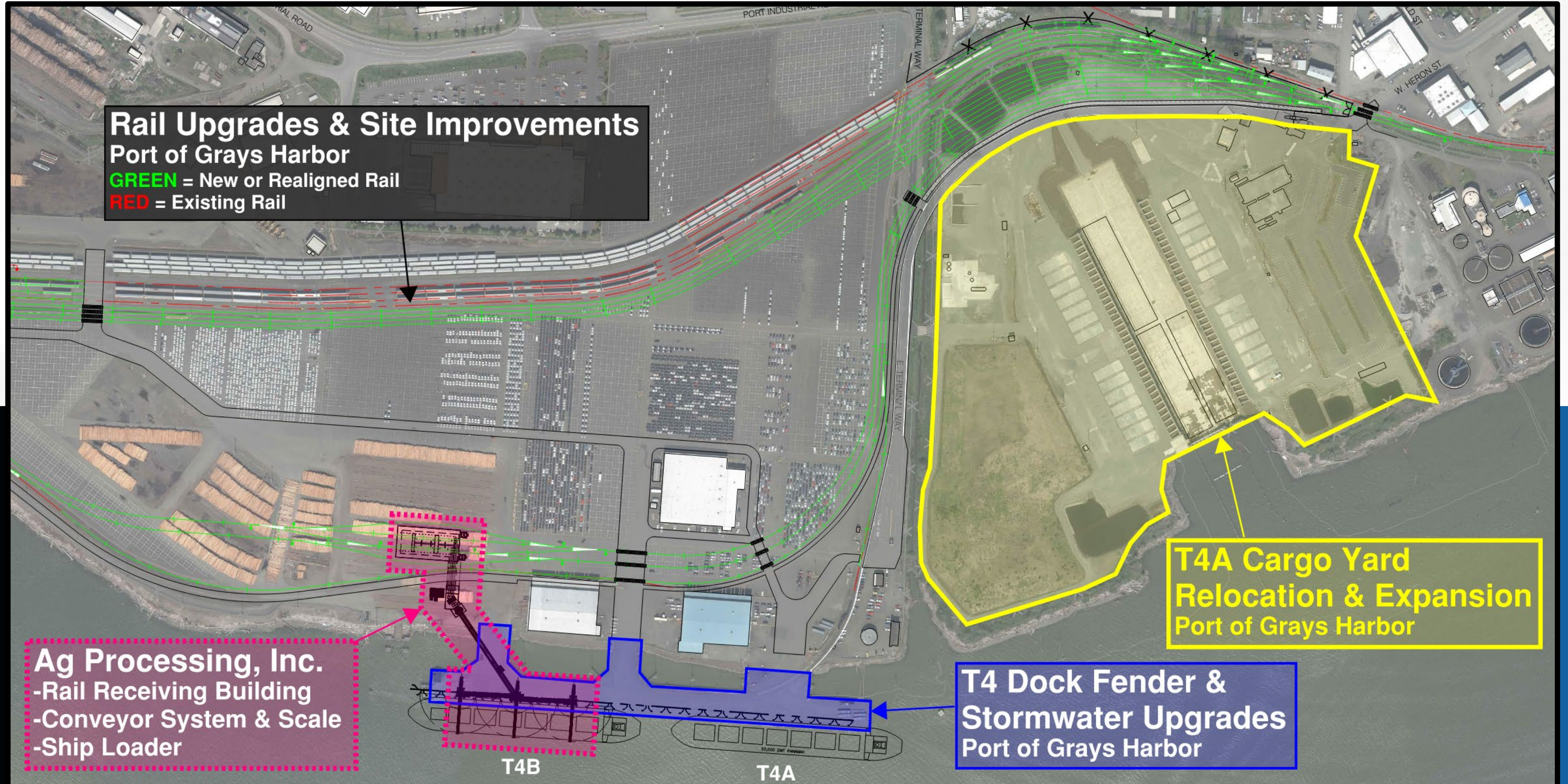


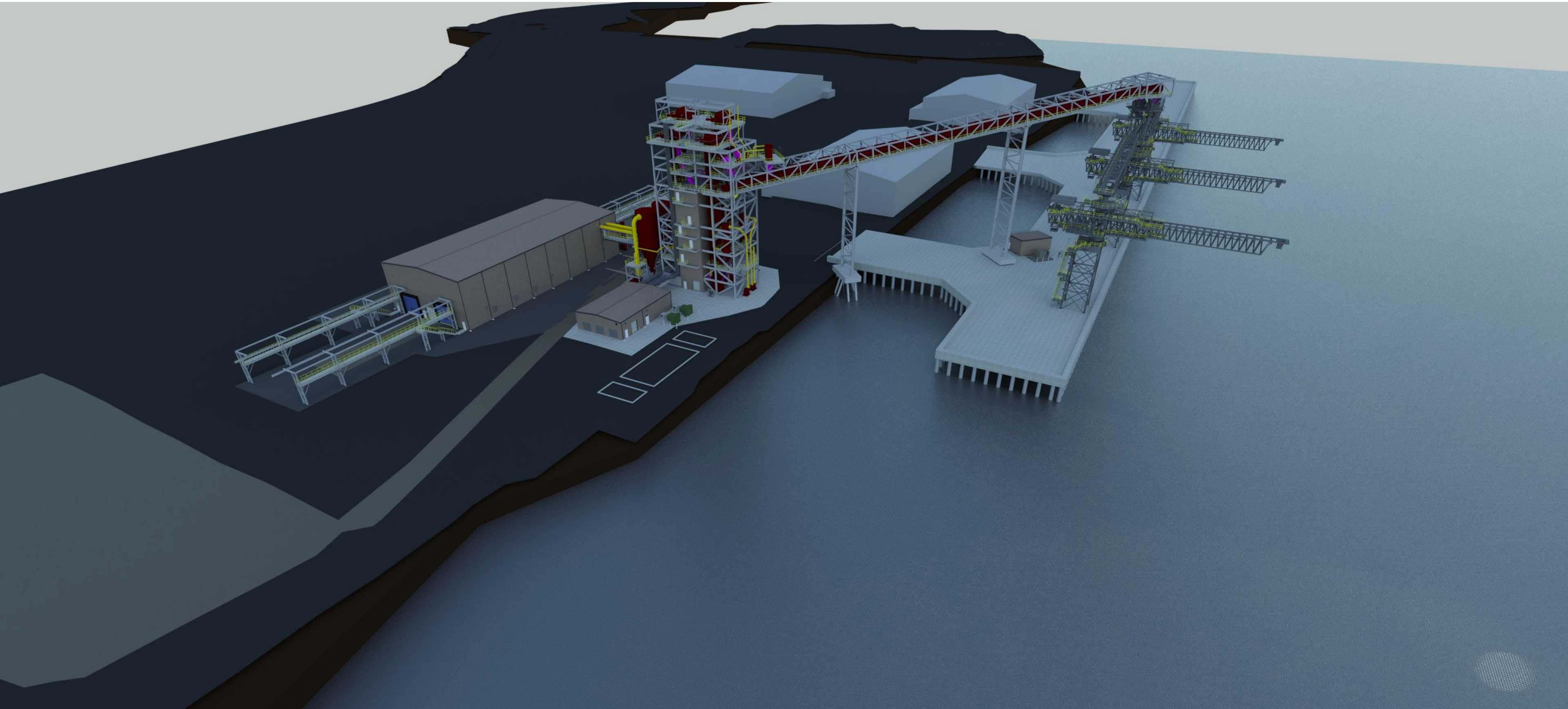
Marine Terminals



Pursuing Progress, Together

Marine Terminal 4 Expansion & Redevelopment





Project Impacts

JOB. INVESTMENT. TRADE.



80+ long-term **JOB**S



\$170M Private **INVESTMENT**



Doubles **EXPORT CARGO** capacity on federal navigation channel



Serves growing demand for domestic **RENEWABLE FUEL** stocks



Aids in global **FOOD SECURITY**



**A PROVEN
PARTNERSHIP**





Terminal 3

THANK YOU

PGH  **2025**

Port of Grays Harbor | Pursuing Progress, Together

www.PortofGraysHarbor.com