



City of McCleary

STAFF REPORT

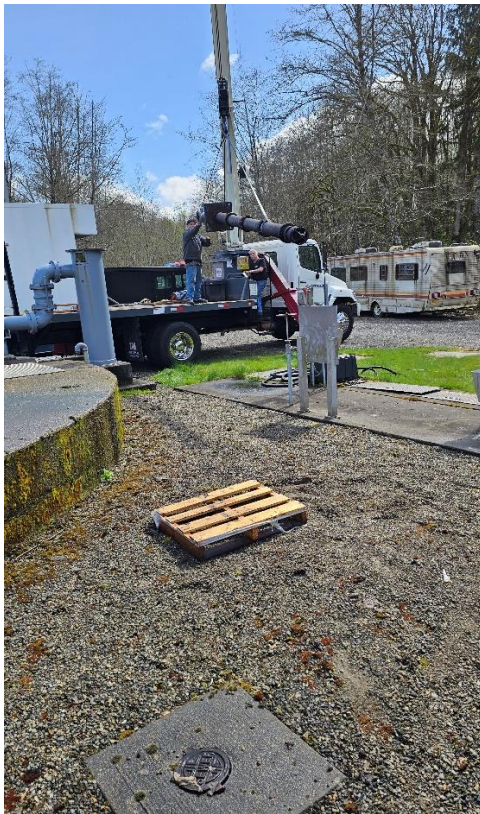
To:	Mayor Miller and City Council
From:	Kevin Trehwella
Date:	April, 2025
Department:	Water and Wastewater

Wastewater:

On April 3 we had a pump company put to work on our Effluent pumps. Effluent Pump #2 had to be pulled so that we could see why it would not pump. The inlet of the pump was full of grease and human hair. After removing the yuk, we reinstalled the pump and it ran perfectly. The other pump, Effluent pump #3, had a bad mechanical seal. When the mechanic went to replace the seal, they found that the Spider Bearing was not where it



was supposed to be. They pulled the pump, Joe cleaned up the pump and they loaded it onto their truck. It will be back in 2 weeks



In the city many of the lift stations are getting to a stage where replacements need to be made. On the lift station control panels, the parts are not available anymore. On Simpson lifts station the pumps are, intermittently, not getting the message to shut down after the floats send a signal to shut down. This is causing overheating of the pumps. NOT GOOD! If we do not get that control panel replaced, we may as well throw away the \$7500 we spent on a new pump last year.. The lead time on lift station control panels is 4 to 6 months.

Also, the ethernet cable between wellhouses 2 & 3 needs to be replaced.

Kevin Trehwella