

Hillsboro Equipment Mauston Retail Store Mauston, Wisconsin

Date
4-15-2024

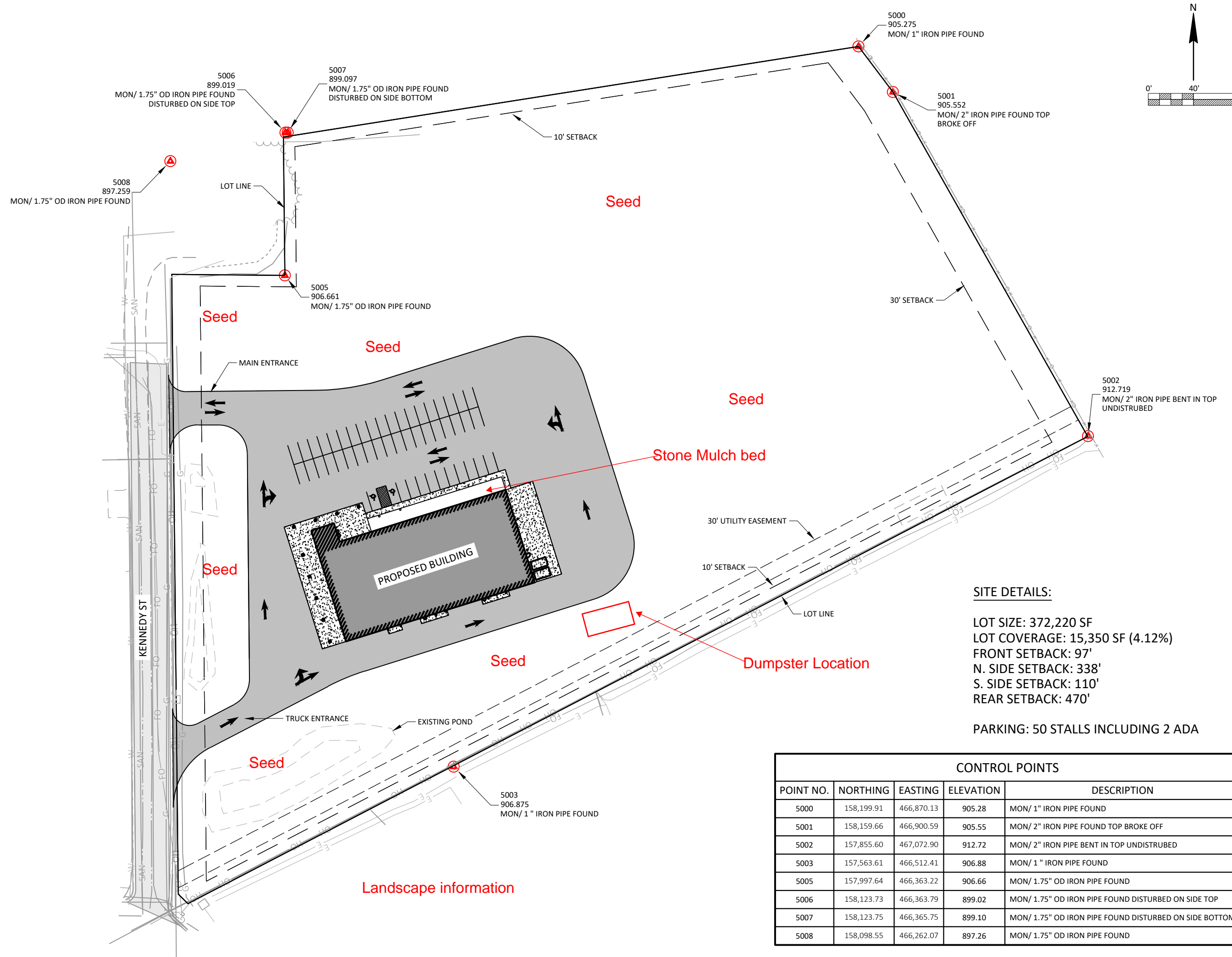
No.	Description	Date

Drawing Name
Proposed Site

Landscape

Project number
H85040

Sheet number
C2.0



SITE DETAILS:

LOT SIZE: 372,220 SF
 LOT COVERAGE: 15,350 SF (4.12%)
 FRONT SETBACK: 97'
 N. SIDE SETBACK: 338'
 S. SIDE SETBACK: 110'
 REAR SETBACK: 470'

PARKING: 50 STALLS INCLUDING 2 ADA

CONTROL POINTS

POINT NO.	NORTHING	EASTING	ELEVATION	DESCRIPTION
5000	158,199.91	466,870.13	905.28	MON/ 1" IRON PIPE FOUND
5001	158,159.66	466,900.59	905.55	MON/ 2" IRON PIPE FOUND TOP BROKE OFF
5002	157,855.60	467,072.90	912.72	MON/ 2" IRON PIPE BENT IN TOP UNDISTRUBED
5003	157,563.61	466,512.41	906.88	MON/ 1 " IRON PIPE FOUND
5005	157,997.64	466,363.22	906.66	MON/ 1.75" OD IRON PIPE FOUND
5006	158,123.73	466,363.79	899.02	MON/ 1.75" OD IRON PIPE FOUND DISTURBED ON SIDE TOP
5007	158,123.75	466,365.75	899.10	MON/ 1.75" OD IRON PIPE FOUND DISTURBED ON SIDE BOTTOM
5008	158,098.55	466,262.07	897.26	MON/ 1.75" OD IRON PIPE FOUND