

RENEWAL UNLIMITED HEAD START DAYCARE

MAUSTON, WISCONSIN

Designing Experiences.
Building Relationships.

PROJECT INFORMATION

RENEWAL UNLIMITED INC
777 MARTIN STREET
MAUSTON, WI 53948

OWNER

RENEWAL UNLIMITED INC
2900 RED FOX RUN
PORTAGE, WI 53901
PHONE

ARCHITECT/INTERIOR DESIGN

ARCHITECTURAL DESIGN CONSULTANTS, INC.
30 WISCONSIN DELLS PARKWAY
P.O. BOX 580
LAKE DELTON, WI 53940
PHONE NUMBER: 608.254.6181

CIVIL CONSULTANT

GENERAL ENGINEERING COMPANY
P.O. BOX 340
916 SILVER LAKE DRIVE
PORTAGE, WI 53901
PHONE NUMBER: 608.742.2169

STRUCTURAL CONSULTANT

MP-SQUARED STRUCTURAL ENGINEERS, LLC
1563 DONOFIO DRIVE, SUITE 201
MADISON, WI 53719
PHONE NUMBER: 608.821.4774

OWNER DIRECT CONSULTANTS:

GENERAL CONTRACTOR

HARMONY CONSTRUCTION MANAGEMENT
906 JONATHAN DR.
MADISON, WI 53713
PHONE NUMBER: 608.224.3310



ISSUED FOR	DATE
PERMITTING & CONSTRUCTION	08-02-2022
PERMITTING & CONSTRUCTION (SECOND)	08-22-2023

REVISIONS	DATE
1 15% ¹	01-31-2024

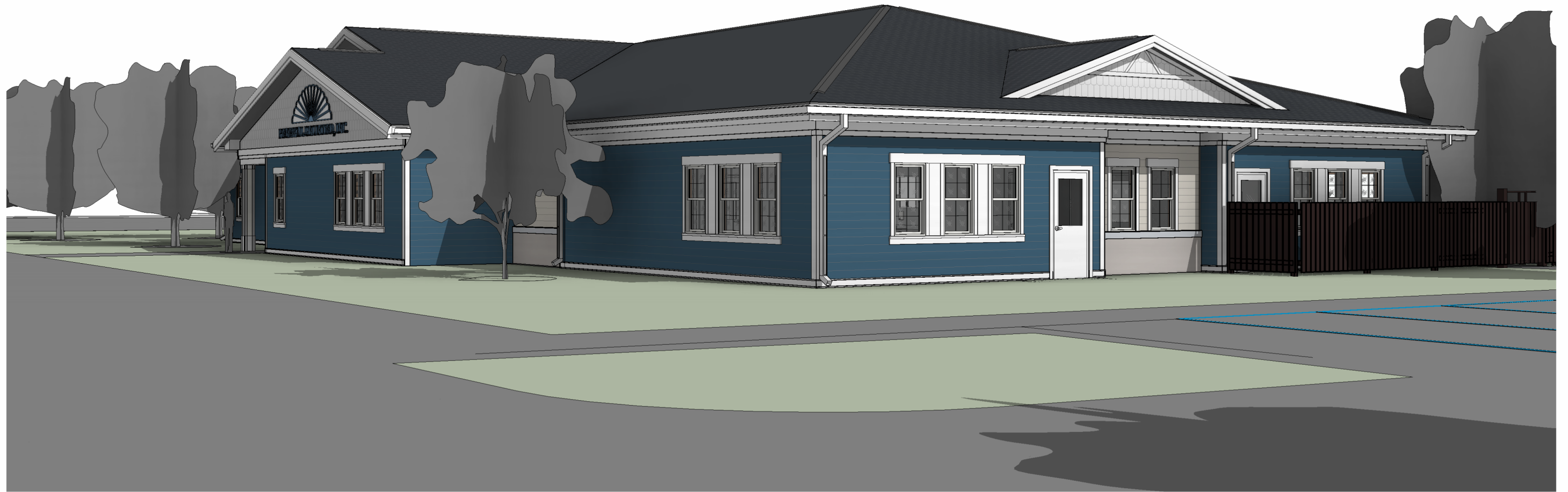
INDEX OF DRAWINGS	
T100	TITLE SHEET

CIVIL	
C1.0	LEGEND & NOTES
C2.0	EXISTING SITE PLAN
C3.0	PROPOSED SITE PLAN
C4.0	GRADING & EROSION CONTROL PLAN
C5.0	MISC DETAILS

LANDSCAPING	
L1.0	PROPOSED LANDSCAPE PLAN

ARCHITECTURAL	
A001	ARCHITECTURAL ABBREVIATIONS & SYMBOLS
A010	CODE PLAN
A200	BARRIER FREE DESIGN NOTES
A201	BARRIER FREE DESIGN DETAILS
A202	BARRIER FREE DESIGN DETAILS
A203	BARRIER FREE DESIGN DETAILS
A204	BARRIER FREE DESIGN NOTES & DETAILS
A300	ARCHITECTURAL SITE PLAN
A301	FLOOR PLAN
A302	ROOF PLAN
A303	INTERIOR ELEVATIONS
A304	INTERIOR ELEVATIONS
A305	INTERIOR ELEVATIONS
A306	INTERIOR ELEVATIONS
A307	EXTERIOR ELEVATIONS
A308	EXTERIOR ELEVATIONS
A309	SECTIONS
A310	ARCHITECTURAL DETAILS
A311	ARCHITECTURAL DETAILS
A312	ARCHITECTURAL DETAILS
A313	ARCHITECTURAL DETAILS
A314	ARCHITECTURAL DETAILS
A315	ARCHITECTURAL DETAILS
A316	ARCHITECTURAL DETAILS
A317	ARCHITECTURAL DETAILS
A318	ARCHITECTURAL DETAILS
A319	ARCHITECTURAL DETAILS
A320	ARCHITECTURAL DETAILS
A321	ARCHITECTURAL DETAILS
A322	ARCHITECTURAL DETAILS
A323	ARCHITECTURAL DETAILS
A324	ARCHITECTURAL DETAILS
A325	ARCHITECTURAL DETAILS
A326	ARCHITECTURAL DETAILS
A327	ARCHITECTURAL DETAILS
A328	ARCHITECTURAL DETAILS
A329	ARCHITECTURAL DETAILS
A330	ARCHITECTURAL DETAILS
A331	ARCHITECTURAL DETAILS
A332	ARCHITECTURAL DETAILS
A333	ARCHITECTURAL DETAILS
A334	ARCHITECTURAL DETAILS
A335	ARCHITECTURAL DETAILS
A336	ARCHITECTURAL DETAILS
A337	ARCHITECTURAL DETAILS
A338	ARCHITECTURAL DETAILS
A339	ARCHITECTURAL DETAILS
A340	ARCHITECTURAL DETAILS
A341	ARCHITECTURAL DETAILS
A342	ARCHITECTURAL DETAILS
A343	ARCHITECTURAL DETAILS
A344	ARCHITECTURAL DETAILS
A345	ARCHITECTURAL DETAILS
A346	ARCHITECTURAL DETAILS
A347	ARCHITECTURAL DETAILS
A348	ARCHITECTURAL DETAILS
A349	ARCHITECTURAL DETAILS
A350	ARCHITECTURAL DETAILS
A351	ARCHITECTURAL DETAILS
A352	ARCHITECTURAL DETAILS
A353	ARCHITECTURAL DETAILS
A354	ARCHITECTURAL DETAILS
A355	ARCHITECTURAL DETAILS
A356	ARCHITECTURAL DETAILS
A357	ARCHITECTURAL DETAILS
A358	ARCHITECTURAL DETAILS
A359	ARCHITECTURAL DETAILS
A360	ARCHITECTURAL DETAILS
A361	ARCHITECTURAL DETAILS
A362	ARCHITECTURAL DETAILS
A363	ARCHITECTURAL DETAILS
A364	ARCHITECTURAL DETAILS
A365	ARCHITECTURAL DETAILS
A366	ARCHITECTURAL DETAILS
A367	ARCHITECTURAL DETAILS
A368	ARCHITECTURAL DETAILS
A369	ARCHITECTURAL DETAILS
A370	ARCHITECTURAL DETAILS
A371	ARCHITECTURAL DETAILS
A372	ARCHITECTURAL DETAILS
A373	ARCHITECTURAL DETAILS
A374	ARCHITECTURAL DETAILS
A375	ARCHITECTURAL DETAILS
A376	ARCHITECTURAL DETAILS
A377	ARCHITECTURAL DETAILS
A378	ARCHITECTURAL DETAILS
A379	ARCHITECTURAL DETAILS
A380	ARCHITECTURAL DETAILS
A381	ARCHITECTURAL DETAILS
A382	ARCHITECTURAL DETAILS
A383	ARCHITECTURAL DETAILS
A384	ARCHITECTURAL DETAILS
A385	ARCHITECTURAL DETAILS
A386	ARCHITECTURAL DETAILS
A387	ARCHITECTURAL DETAILS
A388	ARCHITECTURAL DETAILS
A389	ARCHITECTURAL DETAILS
A390	ARCHITECTURAL DETAILS
A391	ARCHITECTURAL DETAILS
A392	ARCHITECTURAL DETAILS
A393	ARCHITECTURAL DETAILS
A394	ARCHITECTURAL DETAILS
A395	ARCHITECTURAL DETAILS
A396	ARCHITECTURAL DETAILS
A397	ARCHITECTURAL DETAILS
A398	ARCHITECTURAL DETAILS
A399	ARCHITECTURAL DETAILS
A400	ARCHITECTURAL DETAILS
A401	ARCHITECTURAL DETAILS
A402	ARCHITECTURAL DETAILS
A403	ARCHITECTURAL DETAILS
A404	ARCHITECTURAL DETAILS
A405	ARCHITECTURAL DETAILS
A406	ARCHITECTURAL DETAILS
A407	ARCHITECTURAL DETAILS
A408	ARCHITECTURAL DETAILS
A409	ARCHITECTURAL DETAILS
A410	ARCHITECTURAL DETAILS
A411	ARCHITECTURAL DETAILS
A412	ARCHITECTURAL DETAILS
A413	ARCHITECTURAL DETAILS
A414	ARCHITECTURAL DETAILS
A415	ARCHITECTURAL DETAILS
A416	ARCHITECTURAL DETAILS
A417	ARCHITECTURAL DETAILS
A418	ARCHITECTURAL DETAILS
A419	ARCHITECTURAL DETAILS
A420	ARCHITECTURAL DETAILS
A421	ARCHITECTURAL DETAILS
A422	ARCHITECTURAL DETAILS
A423	ARCHITECTURAL DETAILS
A424	ARCHITECTURAL DETAILS
A425	ARCHITECTURAL DETAILS
A426	ARCHITECTURAL DETAILS
A427	ARCHITECTURAL DETAILS
A428	ARCHITECTURAL DETAILS
A429	ARCHITECTURAL DETAILS
A430	ARCHITECTURAL DETAILS
A431	ARCHITECTURAL DETAILS
A432	ARCHITECTURAL DETAILS
A433	ARCHITECTURAL DETAILS
A434	ARCHITECTURAL DETAILS
A435	ARCHITECTURAL DETAILS
A436	ARCHITECTURAL DETAILS
A437	ARCHITECTURAL DETAILS
A438	ARCHITECTURAL DETAILS
A439	ARCHITECTURAL DETAILS
A440	ARCHITECTURAL DETAILS
A441	ARCHITECTURAL DETAILS
A442	ARCHITECTURAL DETAILS
A443	ARCHITECTURAL DETAILS
A444	ARCHITECTURAL DETAILS
A445	ARCHITECTURAL DETAILS
A446	ARCHITECTURAL DETAILS
A447	ARCHITECTURAL DETAILS
A448	ARCHITECTURAL DETAILS
A449	ARCHITECTURAL DETAILS
A450	ARCHITECTURAL DETAILS
A451	ARCHITECTURAL DETAILS
A452	ARCHITECTURAL DETAILS
A453	ARCHITECTURAL DETAILS
A454	ARCHITECTURAL DETAILS
A455	ARCHITECTURAL DETAILS
A456	ARCHITECTURAL DETAILS
A457	ARCHITECTURAL DETAILS
A458	ARCHITECTURAL DETAILS
A459	ARCHITECTURAL DETAILS
A460	ARCHITECTURAL DETAILS
A461	ARCHITECTURAL DETAILS
A462	ARCHITECTURAL DETAILS
A463	ARCHITECTURAL DETAILS
A464	ARCHITECTURAL DETAILS
A465	ARCHITECTURAL DETAILS
A466	ARCHITECTURAL DETAILS
A467	ARCHITECTURAL DETAILS
A468	ARCHITECTURAL DETAILS
A469	ARCHITECTURAL DETAILS
A470	ARCHITECTURAL DETAILS
A471	ARCHITECTURAL DETAILS
A472	ARCHITECTURAL DETAILS
A473	ARCHITECTURAL DETAILS
A474	ARCHITECTURAL DETAILS
A475	ARCHITECTURAL DETAILS
A476	ARCHITECTURAL DETAILS
A477	ARCHITECTURAL DETAILS
A478	ARCHITECTURAL DETAILS
A479	ARCHITECTURAL DETAILS
A480	ARCHITECTURAL DETAILS
A481	ARCHITECTURAL DETAILS
A482	ARCHITECTURAL DETAILS
A483	ARCHITECTURAL DETAILS
A484	ARCHITECTURAL DETAILS
A485	ARCHITECTURAL DETAILS
A486	ARCHITECTURAL DETAILS
A487	ARCHITECTURAL DETAILS
A488	ARCHITECTURAL DETAILS
A489	ARCHITECTURAL DETAILS
A490	ARCHITECTURAL DETAILS
A491	ARCHITECTURAL DETAILS
A492	ARCHITECTURAL DETAILS
A493	ARCHITECTURAL DETAILS
A494	ARCHITECTURAL DETAILS
A495	ARCHITECTURAL DETAILS
A496	ARCHITECTURAL DETAILS
A497	ARCHITECTURAL DETAILS
A498	ARCHITECTURAL DETAILS
A499	ARCHITECTURAL DETAILS
A500	ARCHITECTURAL DETAILS
A501	ARCHITECTURAL DETAILS
A502	ARCHITECTURAL DETAILS
A503	ARCHITECTURAL DETAILS
A504	ARCHITECTURAL DETAILS
A505	ARCHITECTURAL DETAILS
A506	ARCHITECTURAL DETAILS
A507	ARCHITECTURAL DETAILS
A508	ARCHITECTURAL DETAILS
A509	ARCHITECTURAL DETAILS
A510	ARCHITECTURAL DETAILS
A511	ARCHITECTURAL DETAILS
A512	ARCHITECTURAL DETAILS
A513	ARCHITECTURAL DETAILS
A514	ARCHITECTURAL DETAILS
A515	ARCHITECTURAL DETAILS
A516	ARCHITECTURAL DETAILS
A517	ARCHITECTURAL DETAILS
A518	ARCHITECTURAL DETAILS
A519	ARCHITECTURAL DETAILS
A520	ARCHITECTURAL DETAILS
A521	ARCHITECTURAL DETAILS
A522	ARCHITECTURAL DETAILS
A523	ARCHITECTURAL DETAILS
A524	ARCHITECTURAL DETAILS
A525	ARCHITECTURAL DETAILS
A526	ARCHITECTURAL DETAILS
A527	ARCHITECTURAL DETAILS
A528	ARCHITECTURAL DETAILS
A529	ARCHITECTURAL DETAILS
A530	ARCHITECTURAL DETAILS
A531	ARCHITECTURAL DETAILS
A532	ARCHITECTURAL DETAILS
A533	ARCHITECTURAL DETAILS
A534	ARCHITECTURAL DETAILS
A535	ARCHITECTURAL DETAILS
A536	ARCHITECTURAL DETAILS
A537	ARCHITECTURAL DETAILS
A538	ARCHITECTURAL DETAILS
A539	ARCHITECTURAL DETAILS
A540	ARCHITECTURAL DETAILS
A541	ARCHITECTURAL DETAILS
A542	ARCHITECTURAL DETAILS
A543	ARCHITECTURAL DETAILS
A544	ARCHITECTURAL DETAILS
A545	ARCHITECTURAL DETAILS
A546	ARCHITECTURAL DETAILS
A547	ARCHITECTURAL DETAILS
A548	ARCHITECTURAL DETAILS
A549	ARCHITECTURAL DETAILS
A550	ARCHITECTURAL DETAILS
A551	ARCHITECTURAL DETAILS
A552	ARCHITECTURAL DETAILS
A553	ARCHITECTURAL DETAILS
A554	ARCHITECTURAL DETAILS
A555	ARCHITECTURAL DETAILS
A556	ARCHITECTURAL DETAILS
A557	ARCHITECTURAL DETAILS
A558	ARCHITECTURAL DETAILS
A559	ARCHITECTURAL DETAILS
A560	ARCHITECTURAL DETAILS
A561	ARCHITECTURAL DETAILS
A562	ARCHITECTURAL DETAILS
A563	ARCHITECTURAL DETAILS
A564	ARCHITECTURAL DETAILS
A565	ARCHITECTURAL DETAILS
A566	ARCHITECTURAL DETAILS
A567	ARCHITECTURAL DETAILS
A568	ARCHITECTURAL DETAILS
A569	ARCHITECTURAL DETAILS
A570	ARCHITECTURAL DETAILS
A571	ARCHITECTURAL DETAILS
A572	ARCHITECTURAL DETAILS
A573	ARCHITECTURAL DETAILS
A574	ARCHITECTURAL DETAILS
A575	ARCHITECTURAL DETAILS
A576	ARCHITECTURAL DETAILS
A577	ARCHITECTURAL DETAILS
A578	ARCHITECTURAL DETAILS
A579	ARCHITECTURAL DETAILS
A580	ARCHITECTURAL DETAILS
A581	ARCHITECTURAL DETAILS
A582	ARCHITECTURAL DETAILS
A583	ARCHITECTURAL DETAILS
A584	ARCHITECTURAL DETAILS
A585	ARCHITECTURAL DETAILS
A586	ARCHITECTURAL DETAILS
A587	ARCHITECTURAL DETAILS
A588	ARCHITECTURAL DETAILS
A589	ARCHITECTURAL DETAILS
A590	ARCHITECTURAL DETAILS
A591	ARCHITECTURAL DETAILS
A592	ARCHITECTURAL DETAILS
A593	ARCHITECTURAL DETAILS
A594	ARCHITECTURAL DETAILS
A595	ARCHITECTURAL DETAILS
A596	ARCHITECTURAL DETAILS
A597	ARCHITECTURAL DETAILS
A598	ARCHITECTURAL DETAILS
A599	ARCHITECTURAL DETAILS
A600	ARCHITECTURAL DETAILS
A601	ARCHITECTURAL DETAILS
A602	ARCHITECTURAL DETAILS
A603	ARCHITECTURAL DETAILS
A604	ARCHITECTURAL DETAILS
A605	ARCHITECTURAL DETAILS
A606	ARCHITECTURAL DETAILS
A607	ARCHITECTURAL DETAILS
A608	ARCHITECTURAL DETAILS
A609	ARCHITECTURAL DETAILS
A610	ARCHITECTURAL DETAILS
A611	ARCHITECTURAL DETAILS
A612	ARCHITECTURAL DETAILS
A613	ARCHITECTURAL DETAILS
A614	ARCHITECTURAL DETAILS
A615	ARCHITECTURAL DETAILS
A616	ARCHITECTURAL DETAILS
A617	ARCHITECTURAL DETAILS
A618	ARCHITECTURAL DETAILS
A619	ARCHITECTURAL DETAILS
A620	ARCHITECTURAL DETAILS
A621	ARCHITECTURAL DETAILS
A622	ARCHITECTURAL DETAILS
A623	ARCHITECTURAL DETAILS
A624	ARCHITECTURAL DETAILS
A625	ARCHITECTURAL DETAILS
A626	ARCHITECTURAL DETAILS
A627	ARCHITECTURAL DETAILS
A628	ARCHITECTURAL DETAILS
A629	ARCHITECTURAL DETAILS
A630	ARCHITECTURAL DETAILS
A631	ARCHITECTURAL DETAILS
A632	ARCHITECTURAL DETAILS
A633	ARCHITECTURAL DETAILS
A634	ARCHITECTURAL DETAILS
A635	ARCHITECTURAL DETAILS
A636	ARCHITECTURAL DETAILS
A637	ARCHITECTURAL DETAILS
A638	ARCHITECTURAL DETAILS
A639	ARCHITECTURAL DETAILS
A640	ARCHITECTURAL DETAILS
A641	ARCHITECTURAL DETAILS
A642	ARCHITECTURAL DETAILS
A643	ARCHITECTURAL DETAILS
A644	ARCHITECTURAL DETAILS
A645	ARCHITECTURAL DETAILS
A646	ARCHITECTURAL DETAILS
A647	ARCHITECTURAL DETAILS
A648	ARCHITECTURAL DETAILS
A649	ARCHITECTURAL DETAILS
A650	ARCHITECTURAL DETAILS
A651	ARCHITECTURAL DETAILS
A652	ARCHITECTURAL DETAILS
A653	ARCHITECTURAL DETAILS
A654	ARCHITECTURAL DETAILS
A655	ARCHITECTURAL DETAILS
A656	ARCHITECTURAL DETAILS
A657	ARCHITECTURAL DETAILS
A658	ARCHITECTURAL DETAILS
A659	ARCHITECTURAL DETAILS
A660	ARCHITECTURAL DETAILS
A661	ARCHITECTURAL DETAILS
A662	ARCHITECTURAL DETAILS
A663	ARCHITECTURAL DETAILS
A664	ARCHITECTURAL DETAILS
A665	ARCHITECTURAL DETAILS
A666	ARCHITECTURAL DETAILS
A667	ARCHITECTURAL DETAILS
A668	ARCHITECTURAL DETAILS
A669	ARCHITECTURAL DETAILS
A670	ARCHITECTURAL DETAILS
A671	ARCHITECTURAL DETAILS
A672	ARCHITECTURAL DETAILS
A673	ARCHITECTURAL DETAILS
A674	ARCHITECTURAL DETAILS
A675	ARCHITECTURAL DETAILS





CONSTRUCTION NOTES

GENERAL

- ALL EXISTING UNDERGROUND UTILITY LOCATIONS SHOWN ARE APPROXIMATE AND SHOULD BE FIELD VERIFIED, BY CONTRACTOR, PRIOR TO CONSTRUCTION.

WATER MAIN

- EXISTING WATER MAIN LOCATIONS, SIZES, AND TYPES SHOULD BE FIELD VERIFIED BY THE CONTRACTOR PRIOR TO MAKING ANY CONNECTIONS.
- UNLESS OTHERWISE INDICATED BY DESIGN GRADE, MAINTAIN A 7.0' MINIMUM DEPTH OF COVER OVER PROPOSED WATER MAIN LATERALS.

SANITARY SEWER

- EXISTING SANITARY SEWER LOCATIONS, SIZES, AND TYPES SHOULD BE FIELD VERIFIED BY THE CONTRACTOR PRIOR TO MAKING ANY CONNECTIONS.

STORM SEWER

- STORM SEWER PIPE LENGTHS ARE SHOWN MEASURED FROM CENTER OF STRUCTURE TO CENTER OF STRUCTURE.

GRADING & EROSION CONTROL NOTES

- ALL EROSION CONTROL MEASURES SHALL BE IN PLACE PRIOR TO CONSTRUCTION.
- SILT FENCE, TEMPORARY SEDIMENT BASIN, & ROCK CONSTRUCTION ENTRANCE SHALL BE INSTALLED PRIOR TO ANY LAND DISTURBING ACTIVITIES, INCLUDING CLEARING & GRUBBING.
- ALL STORM SEWER INLETS SHALL HAVE INLET PROTECTION TYPE-D INSTALLED UPON INLET INSTALLATION.
- CONTRACTOR IS RESPONSIBLE FOR WEEKLY DNR INSPECTION REPORTS IN ACCORDANCE WITH NR 21.6.46(9).
- ADDITIONAL EROSION CONTROL MEASURES MAY BE ADDED ON AN AS-NEEDED BASIS.
- ANY AREAS WHERE GRADING IS COMPLETE SHALL BE STABILIZED WITH FERTILIZER, SEED, & MULCH AS SOON AS POSSIBLE.
- ALL BEST MANAGEMENT PRACTICES WILL BE INSTALLED BY THE TIME THE CONSTRUCTION SITE IS CONSIDERED STABILIZED.
- A COPY OF THIS EROSION CONTROL PLAN SHALL BE KEPT ON SITE THROUGHOUT THE DURATION OF THE PROJECT.
- STOCKPILES LEFT INACTIVE FOR 7 DAYS SHALL BE SEEDED AND SURROUNDED BY SILT FENCE.
- ALL WASTE AND UNUSED BUILDING MATERIALS (INCLUDING GARBAGE, DEBRIS, CLEANING WASTES, OR OTHER CONSTRUCTION MATERIALS) SHALL BE PROPERLY DISPOSED OF AND NOT ALLOWED TO BE CARRIED BY RUNOFF INTO RECEIVING CHANNEL.
- ALL DEWATERING PERMITTING, IF REQUIRED, IS THE RESPONSIBILITY OF THE CONTRACTOR AND SHALL BE IN ACCORDANCE WITH DNR TECHNICAL STANDARD 1061.
- STREETS SHALL BE SWEEPED AT THE END OF EACH WORK DAY OR AS DIRECTED BY THE MUNICIPALITY.
- TRACKING PADS SHALL BE USED AT THE CONSTRUCTION ENTRANCE AND EXITS.
- ALTHOUGH ROCK CONSTRUCTION TRACKING PADS MAY NOT BE SHOWN ON THE PLANS, THE CONTRACTOR SHALL INSTALL THEM AS NECESSARY OR AS DIRECTED BY THE ENGINEER TO MINIMIZE TRACKING ONTO ADJACENT STREETS. THESE PADS ARE CONSIDERED INCIDENTAL TO THE WORK AND WILL NOT BE MEASURED OR PAID FOR SEPARATELY.
- CONTRACTOR WILL BE RESPONSIBLE FOR ALL DUST CONTROL.
- ALL BANK AREAS DISTURBED SHALL BE STABILIZED WITH EROSION CONTROL MAT IMMEDIATELY.
- POSITIVE DRAINAGE AWAY FROM THE BUILDING WILL BE THE RESPONSIBILITY OF THE CONTRACTOR UNLESS OTHERWISE CONFIRMED BY THE ENGINEER.
- DOWN SPOUTS SHALL BE DIRECTED IN A SAFE MANNER AND COMPLY WITH ALL LOCAL AND STATE REGULATIONS.
- ALL FILL PLACED UNDER BUILDING AND PAVED AREAS SHALL BE STRUCTURALLY SOUND.
- SEDIMENT WILL BE REMOVED FROM BEHIND SEDIMENT FENCES AND BARRIERS BEFORE IT REACHES A DEPTH THAT IS EQUAL TO HALF THE BARRIER'S HEIGHT.
- BREAKS AND GAPS IN SEDIMENT FENCES AND BARRIERS WILL BE REPAIRED IMMEDIATELY. DECOMPOSING STRAW BALES WILL BE REPLACED (TYPICAL BALE LIFE IS THREE MONTHS).
- ALL SEDIMENT THAT MOVES OFF-SITE DUE TO CONSTRUCTION ACTIVITY OR STORM EVENTS WILL BE CLEANED UP BEFORE THE END OF THE SAME WORKDAY.
- ALL INSTALLED EROSION CONTROL PRACTICES WILL BE MAINTAINED UNTIL THE DISTURBED AREAS THEY PROTECT ARE STABILIZED.
- ALL EROSION CONTROL MAT SHALL BE INSTALLED WITHIN 24 HOURS OF FINAL GRADES BEING ESTABLISHED.

EXISTING LINETYPES LEGEND

- San— SANITARY SEWER
- ST— STORM SEWER
- WM— WATER MAIN
- FM— FORCE MAIN
- E— ELECTRIC
- OE— OVERHEAD ELECTRIC
- G— GAS
- FO— FIBER OPTIC
- T— TELEPHONE
- TV— TV
- x—x—x—x—x— FENCE
- GL—GL—GL— GRADING LIMITS
- SF—SF—SF— SILT FENCE
- DB—DB—DB— DOUBLE SEDIMENT BARRIER
- ||||||| TRAIN TRACKS
- ~~~~~ TREELINE

ABBREVIATION LIST

- B-B = BACK TO BACK
- BOC = BACK OF CURB
- BOP = BOTTOM OF PIPE
- BOW = BOTTOM OF WALL
- C-C = CENTER TO CENTER
- CL = CENTERLINE
- CP = CONTROL POINT
- DIA = DIAMETER
- ELEV = ELEVATION
- EOG = EDGE OF GRAVEL
- EOP = EDGE OF PAVEMENT
- EX = EXISTING
- FL = FLOW LINE
- FM = FORCE MAIN
- HC = HORIZONTAL CURVE
- HP = HIGH POINT
- IE = INVERT ELEVATION
- INL = INLET
- INV = INVERT
- IOS = INSIDE OF STRUCTURE
- L = LENGTH
- LN = LINE
- LP = LOW POINT
- MH = MANHOLE
- MIN = MINIMUM
- MP = MIDPOINT
- PC = POINT OF CURVE
- PI = POINT OF INTERSECTION
- PRO = PROPOSED
- PT = POINT OF TANGENT
- PVC = POINT OF VERTICAL CURVE
- PVI = POINT OF VERTICAL INTERSECTION
- PVMT = PAVEMENT
- PVT = POINT OF VERTICAL TANGENT
- R = RADIUS
- ROW = RIGHT OF WAY
- S = SANITARY SEWER SERVICE LATERAL
- SAN = SANITARY SEWER
- SE = SPOT ELEVATION
- ST = STORM SEWER
- STA = STATION
- STD = STANDARD
- TC = TOP OF CURB
- TOP = TOP OF PIPE
- TOW = TOP OF WALL
- TYP = TYPICAL
- UOS = UNLESS OTHERWISE SPECIFIED
- VC = VERTICAL CURVE
- W = WATER MAIN SERVICE LATERAL
- WM = WATER MAIN

SYMBOLS LEGEND

- ⓈⓉ EXISTING MANHOLE
- ⓈⓉⓈ PROPOSED MANHOLE
- ⓈⓉⓈ EXISTING HYDRANT
- ⓈⓉⓈ PROPOSED HYDRANT
- ⓈⓉⓈ VALVE
- ⓈⓉⓈ CURB STOP
- ⓈⓉⓈ TRACER WIRE TERMINAL BOX
- ⓈⓉⓈ WELL
- ⓈⓉⓈ PROPERTY CORNER
- ⓈⓉⓈ LIGHT POLE
- ⓈⓉⓈ POWER / TELEPHONE POLE
- ⓈⓉⓈ GUY WIRE
- ⓈⓉⓈ UTILITY PEDESTAL
- ⓈⓉⓈ SIGN
- ⓈⓉⓈ SOIL BORING
- ⓈⓉⓈ MONITORING WELL
- ⓈⓉⓈ MAILBOX
- ⓈⓉⓈ POTENTIAL HAZARD
- ⓈⓉⓈ BENCHMARK
- ⓈⓉⓈ CONTROL POINT
- ⓈⓉⓈ DECIDUOUS TREE
- ⓈⓉⓈ CONIFEROUS TREE
- ⓈⓉⓈ HANDICAP SYMBOL

DIGGERS HOTLINE NOTE



UTILITIES

- | | |
|---|--|
| <p>1. ELECTRIC
ALLIANT ENERGY
338 E. STATE ST.
MAUSTON, WI 53948
PHONE: (715) 424-7023</p> | <p>4. CABLE TV
MEDIACOM COMMUNICATIONS
418 ELM ST.
MAUSTON, WI 539481
PHONE: (952) 472-8694</p> |
| <p>2. TELEPHONE
FRONTIER
120 HICKORY ST.
MAUSTON, WI 53948</p> | <p>5. WATER
CITY OF MAUSTON
303 MANSION ST.
MAUSTON, WI 53948
PHONE: (608) 847-6676</p> |
| <p>3. GAS
ALLIANT ENERGY
338 E. STATE ST.
MAUSTON, WI 53948
PHONE: (715) 424-7023</p> | <p>6. MUNICIPALITY
CITY, TOWN, VILLAGE OF
MAUSTON, WI 53948
PHONE: (608) 847-6676</p> |



ISSUED FOR	DATE
PERMITTING # CONSTRUCTION	06.02.2022
PERMITTING # CONSTRUCTION (RECORD)	06.22.2023

REVISIONS	DATE
-----------	------

CLIENT
RENEWAL UNLIMITED

PROJECT
HEAD START DAYCARE

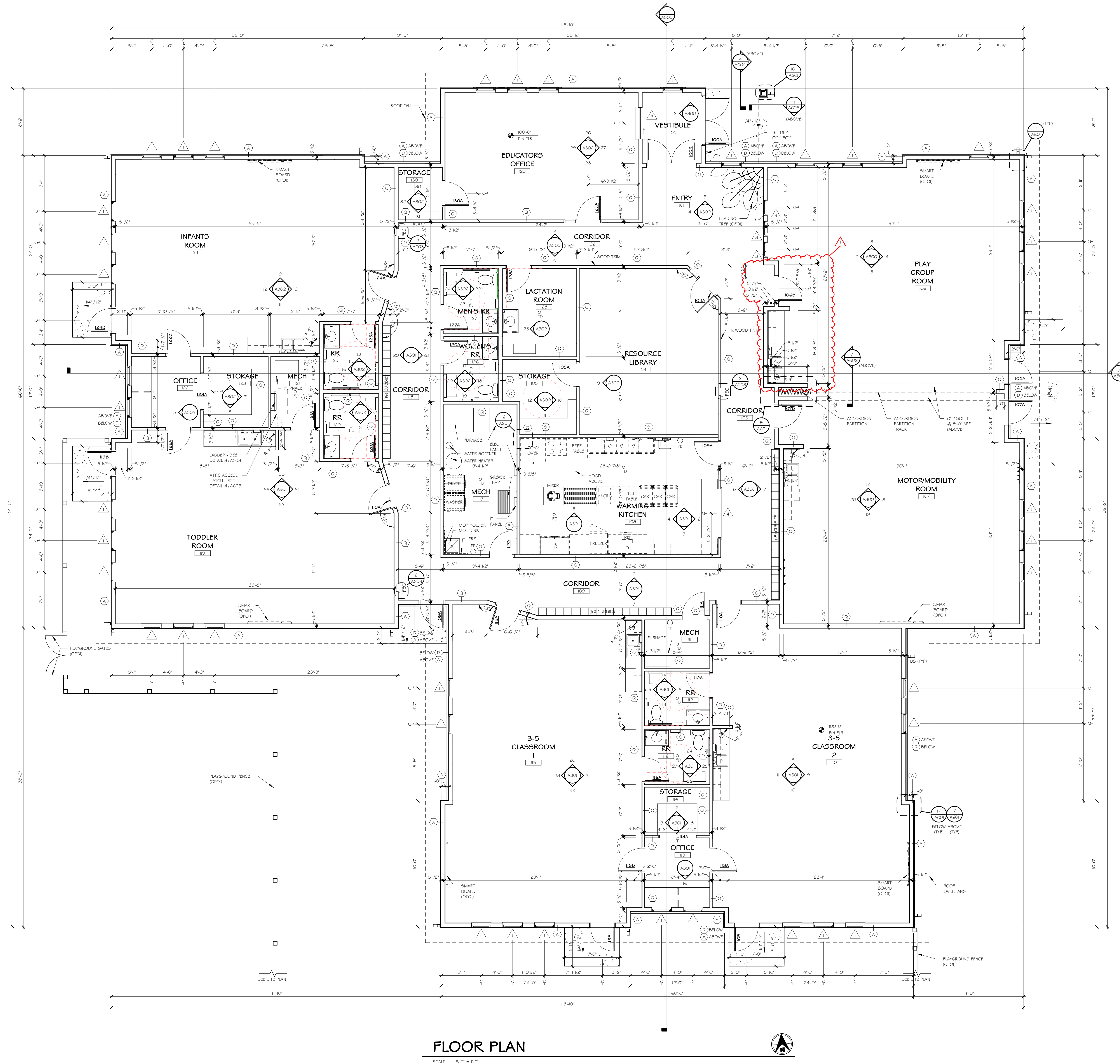
MAUSTON, WI

DRAWN BY
BUPWARD
CHECKED BY
B. SCOTTCHER
DATE
08.22.2023
JOB NUMBER
19-101
BID SET | VOLUME

SHEET NAME
LEGEND & NOTES

SHEET NUMBER

C1.0



FLOOR PLAN

SCALE: 3/32" = 1'-0"

REVISIONS	DATE
1. FROM	01.31.2024

CLIENT
RENEWAL UNLIMITED

PROJECT
HEAD START DAYCARE

MAUSTON, WISCONSIN

DRAWN BY
RDM
CHECKED BY
MLM
DATE
08.22.2023
JOB NUMBER
19-101
BID SET | VOLUME

SHEET NAME
FLOOR PLAN

SHEET NUMBER

A101

REVISIONS	DATE

CLIENT
RENEWAL UNLIMITED

PROJECT
HEAD START DAYCARE

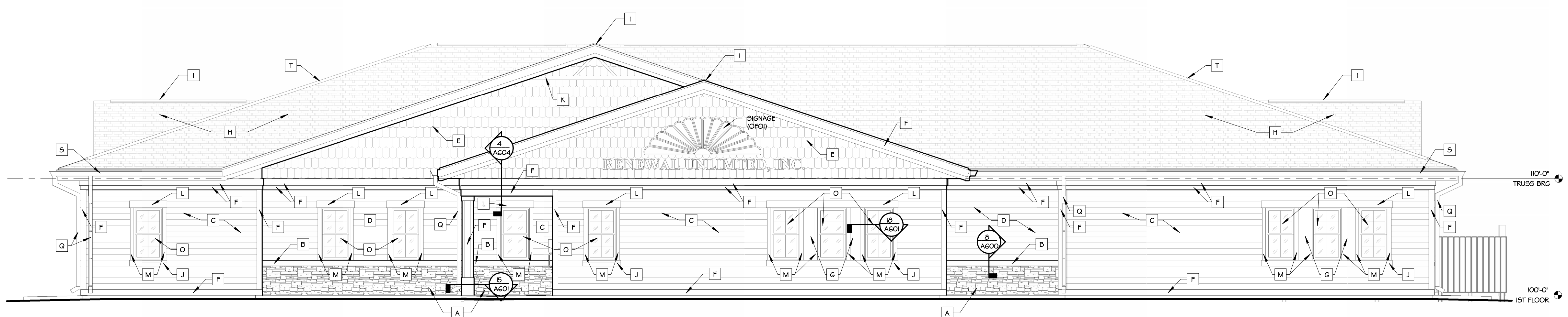
MAUSTON, WISCONSIN

DRAWN BY
RDM
CHECKED BY
MLM
DATE
08.22.2023
JOB NUMBER
19-101
BID SET | VOLUME

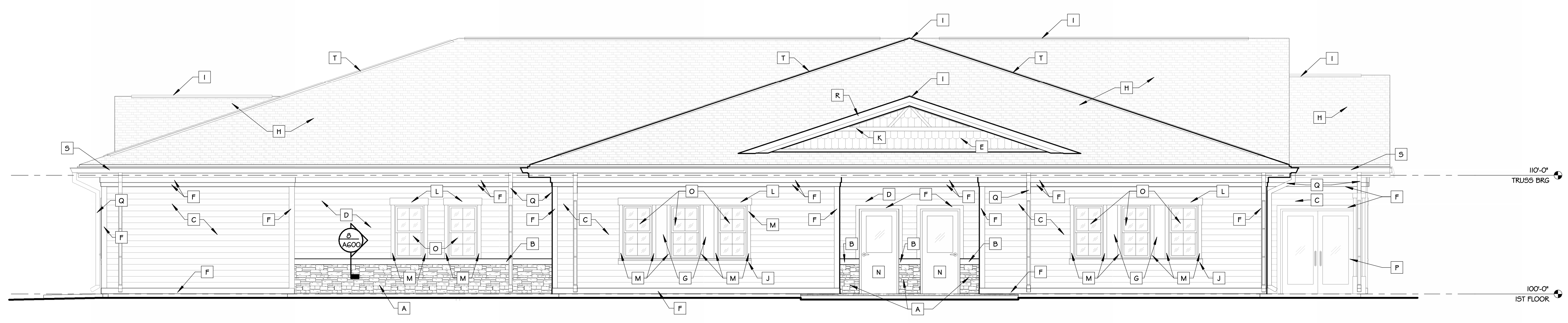
SHEET NAME
EXTERIOR ELEVATIONS

SHEET NUMBER
A400

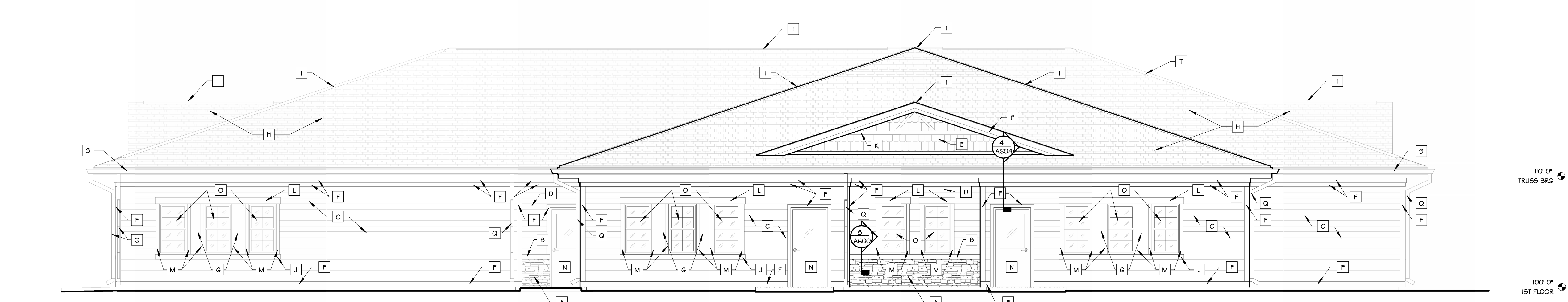
BOX	MATERIAL	COLOR / DESCRIPTION	NOTES
A	MANUFACTURED STONE VENEER	MOJAVE COUNTRY LEDGESTONE	---
B	PRECAST STONE CAP / SILL	LIGHT GUNPOWDER	---
C	COMPOSITE LAP SIDING	RATONS BLUE	---
D	COMPOSITE LAP SIDING	DESERT STONE	---
E	COMPOSITE DECORATIVE SCALLOP SIDING	SNOWSCAPE WHITE	---
F	COMPOSITE TRIM	SNOWSCAPE WHITE	---
G	COMPOSITE PANEL	WHITE	---
H	ASPHALT SHINGLES	CHARCOAL	---
I	CONTINUOUS RIDGE VENT	CHARCOAL	---
J	COMPOSITE TRIM	WHITE	---
K	COMPOSITE TRIM	SNOWSCAPE WHITE	---
L	COMPOSITE WINDOW HEAD ACCENT	SNOWSCAPE WHITE	---
M	COMPOSITE WINDOW 4 DOOR TRIM	SNOWSCAPE WHITE	---
N	HOLLOW METAL DOOR 4 FRAME	SNOWSCAPE WHITE	---
O	VINYL WINDOW	WHITE	---
P	ALUMINUM STOREFRONT DOORS	CLEAR ANODIZED	---
Q	PREFIN ALUM OPEN FACE DOWNSPOUT	WHITE	---
R	COMPOSITE FASCIA	WHITE	---
S	PREFIN ALUM EAVE GUTTER	WHITE	---
T	CONTINUOUS HIP VENT	CHARCOAL	---



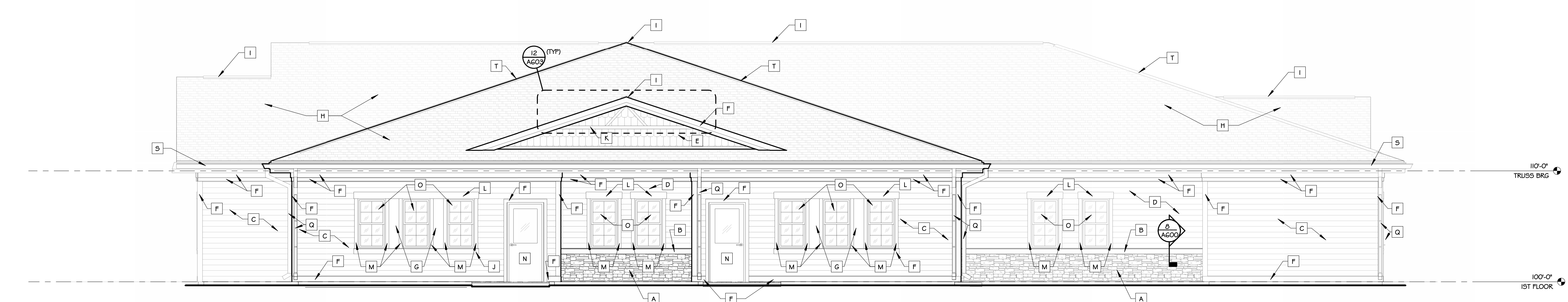
ELEVATION 1
SCALE: 3/8" = 1'-0"



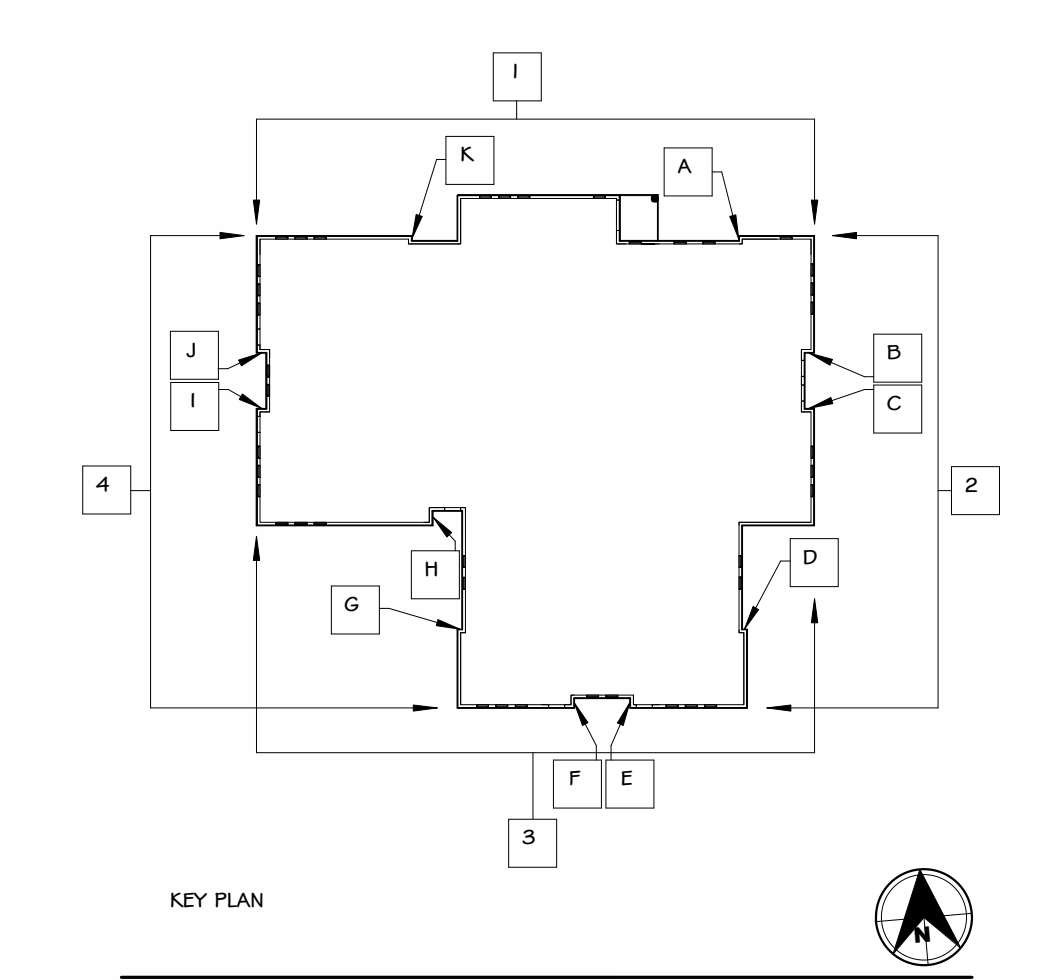
ELEVATION 2
SCALE: 3/8" = 1'-0"



ELEVATION 3
SCALE: 3/8" = 1'-0"



ELEVATION 4
SCALE: 3/8" = 1'-0"





PLANT LIST
Head Start Daycare
City of Mauston, WI

KEY	COMMON NAME	(BOTANICAL NAME)	PLANTING SIZE (Inches)	PLANTING SIZE (#)	COMMENTS (Maturity Height-HT)
SHRUBS					
BGG	'GREEN GEM' BOXWOOD	(BUXUS X GREEN GEM)	18-18	7	(2-FOOT HT), 2 1/2' OC (6 TO 8-FOOT HT)
CSN	'SNOW FOUNTAINS' WEEPING CHERRY	(PRUNUS SNOWFZAM)	18'-CAL	1	WHITE FLOWERS, GOLDENRANGE FALL COLOR (3 TO 4-FOOT HT), PINK ANNNELLE HYDRANGEA (8-FOOT HT)
HIS	HYDRANGEA 'INVINCIBLE SPIRIT'	(HYDRANGEA ARBORESCENS 'INVINCIBLE SPIRIT')	24-30	6	WHITE FLOWERS, GOLDENRANGE FALL COLOR (3 TO 4-FOOT HT), PINK ANNNELLE HYDRANGEA (8-FOOT HT)
HPQ	'QUICKFIRE' PANICLE HYDRANGEA	(HYDRANGEA PANICULATA 'QUICKFIRE')	30-36	1	4' OC, MOST RELIABLE PINK HYDRANGEA (8-FOOT HT)
JBS	BLUE STAR JUNISER	(JUNIPERUS SQUAMATA 'BLUE STAR')	18-24	9	WHITE FLOWERS/SPRING, THEN PINK/SUMMER (2-FOOT HT), 3 1/2' OC
PAB	ABBOTSWOOD FLOWERING POTENTILLA	(POTENTILLA FRUTICOSA 'ABBOTSWOOD')	15-18	6	BLUE-GREEN NEEDLES (3-FOOT HT), 3 1/2' OC
POD	GOLD DROP POTENTILLA	(POTENTILLA FRUTICOSA 'GOLD DROP')	15-18	6	WHITE FLOWER (3-FOOT HT), 3 1/2' OC
SDF	GOLDFLAME SPIREA	(SPIRAEA X BUMALDA 'GOLDFLAME')	15-18	9	(3-FOOT HT), 3 1/2' OC
WRP	'RED PRINCE' WEIGELA	(WEIGELA X 'RED PRINCE')	24-30	3	(4-FOOT HT), 5 1/2' OC

* All woody shrubs shown in container root condition at time of planting.

KEY	COMMON NAME	(BOTANICAL NAME)	PLANTING SIZE (Inches)	PLANTING SIZE (#)	COMMENTS (Maturity Height-HT)
TREES					
BRH	'HERITAGE' RIVER BIRCH	(BETULA NIGRA 'HERITAGE')	8-10 HT.	2	MULTI (3) TRUNK, (25-FOOT HT)
CSS	'SPRING SNOW' FLOWERING CRABAPPLE	(MALUS 'SPRING SNOW')	2'-CAL.	2	WHITE FLOWERS, NO FRUITS, (25-FOOT HT)
EAC	ACCOLADE ELM (ULMUS X ACCOLADE)	(ULMUS X ACCOLADE)	2'-CAL.	1	VASE-SHAPE, YELLOW FALL COLOR, (50-FOOT HT)
STF	FOUNDER ELM (ULMUS X FOUNDER)	(ULMUS X FOUNDER)	2'-CAL.	3	UPRIGHT PYRAMIDAL SHAPE, SMOOTH BARK, DEEP RED FALL COLOR, (35-FOOT HT)
FVN	WHITE FIR	(ABIES CONCOLOR)	4-5 HT.	1	14' OC, (10-FOOT HT), FAST GROWING
GAG	GINKGO AUTUMN GOLD	(GINKGO BILOBA 'AUTUMN GOLD')	2 1/2'-CAL.	1	GOLDEN-YELLOW FALL COLOR, (45-FOOT HT)
GOM	GINKGO MADYAR	(GINKGO BILOBA var. 'MADYAR')	2 1/2'-CAL.	1	GOLD-YELLOW FALL COLOR, (45-FOOT HT)
HPP	'PRAIRIE PRIDE' COMMON HICKORY	(CELTIS OCCIDENTALIS 'PRAIRIE PRIDE')	2'-CAL.	1	YELLOW FALL COLOR, (60-FOOT HT)
LIS	IVORY SILK JAPANESE TREE LILAC	(SYRINGA RETICULATA 'IVORY SILK')	2'-CAL.	2	SINGLE TRUNK, (20-FOOT HT)
MAB	AUTUMN BLAZE 'FREEMAN MAPLE'	(ACER X FREEMANNI 'AUTUMN BLAZE')	2'-CAL.	1	FALL COLOR, (35-FOOT HT)
MCF	'CELEBRATION' FREEMAN MAPLE	(ACER X FREEMANNI 'CELEBRATION')	2'-CAL.	2	ORANGE FALL COLOR, (35-FOOT HT)
MOO	OCTOBER GLORY RED MAPLE	(ACER RUBRUM 'OCTOBER GLORY')	2'-CAL.	1	40 FOOT HT
MSU	SUGAR MAPLE	(ACER SACCHARUM)	2'-CAL.	1	DF, RED TO REDDISH PURPLE FALL COLOR (60-FOOT HT), ORANGE-RED FALL COLOR

* All trees shown in B&B (Balled & Burlapped) root condition at time of planting.

KEY	COMMON NAME	(BOTANICAL NAME)	Spacing (Inches O/C)	Comments
PERENNIALS				
DLS	DAYLILY (HEMEROCALLIS)	'STELLA D'ORO'	24	YELLOW FLOWER, (18-INCH HT)

* Perennials are shown as gallon container size.

LANDSCAPE NOTES
Head Start Daycare

- PLANT MATERIAL/PLANTING BEDS:**
 - FERTILIZE ALL SHRUBS AND/OR TREES WITH A COMMERCIAL SLOW-RELEASE FERTILIZER TABLET OR PACKET, INSTALLED TO MANUFACTURER'S SPECIFICATIONS.
 - FOR PERENNIALS AND/OR ORNAMENTAL GRASSES, APPLY A COMMERCIAL MIXTURE OF 10-10-10 OR APPROPRIATE ORGANIC FERTILIZER AT TIME OF PLANTING.
 - BACKFILL TO A MINIMUM OF 3-TIMES THE DIAMETER OF THE ROOT BALL. ALL PLANT MATERIAL WITH A SOIL MIX RICH IN ORGANIC MATTER. WHERE PERENNIALS ARE SHOWN ON PLAN, INSTALL RICH ORGANIC SUSTAINABLE SOIL AT A MINIMUM DEPTH OF 10-12 INCHES.
 - PLANTING BED EDGING, WHETHER SHOWN ON PLAN, TO BE VALLEY VIEW 'BLACK DIAMOND' POLYETHYLENE BED DIVIDER, INSTALLED TO MANUFACTURER'S SPECIFICATIONS.
 - ORGANIC WOOD MULCH MATERIAL, LOCATED AROUND BUILDING FOUNDATION, TO BE SHREDDED NORTHERN WHITE CEDAR MULCH, INSTALLED AND SPREAD EVENLY AT A DEPTH OF 3 INCHES.
 - IN WOOD MULCH BEDS AFTER SOIL AND PLANTS ARE INSTALLED AND PRIOR TO WOOD MULCH INSTALLATION, BROADCAST THE PRE-EMERGENT HERBICIDE, TRIFLURALIN, OVER THE PLANTING BED SOIL THROUGHOUT THE PLANTING BEDS. INSTALL PRE-EMERGENT ACCORDING TO MANUFACTURER'S SPECIFICATIONS.
 - DO NOT INSTALL A WEED BARRIER FABRIC UNDER ANY ORGANIC WOOD MULCH LOCATIONS.
- TREES:**
 - MAINTAIN ROOT COLLAR OF TREE SLIGHTLY ABOVE GRADE WHEN INSTALLING.
 - DIG HOLE NO DEEPER THAN THE LEVEL ON WHICH THE BOTTOM OF THE ROOT BALL WILL SET.
 - DO NOT STAKE TREE, UNLESS WINDY CONDITIONS DICTATE.
 - WHERE TREES ARE LOCATED IN LAWN TURF AREAS, PROVIDE A MINIMUM 5-FEET DIAMETER MULCH BED AROUND EACH TREE. MULCH AROUND THESE TREES WITH A 3-INCH DEPTH OF CEDAR WOOD MULCH SPREAD EVENLY. NETHER INSTALL WEED-BARRIER FABRIC UNDER WOOD MULCH NOR A BED DIVIDER AROUND TREE.
- PLANT WARRANTY:**
 - ALL SHRUBS AND TREES TO BE GUARANTEED FOR ONE FULL CALENDAR YEAR FOLLOWING DATE OF INITIAL INSTALLATION. REPLACE ANY DEAD OR DISEASED PLANTS WITH HEALTHY PLANT SPECIMENS EQUAL TO OR LARGER THAN PLANT SIZE ORIGINALLY PLANTED.
 - GUARANTEE PERENNIALS AND ORNAMENTAL GRASSES FOR ONE FULL GROWING SEASON. REPLACE, IF NECESSARY, ANY DEAD OR DISEASED SPECIMENS.
- TURFGRASS AREAS:**
 - TOPSOIL/TOPSOIL GRADING:**
 - PROVIDE TOPSOIL, IF CONTRACT REQUIRES.
 - TOPSOIL SHALL BE BLACK LOAM NATIVE TO THE AREA, WITHOUT SUBSOIL, STONES, LUMPS, CLOUDS OF HARD EARTH, PLANTS, ROOTS, STICKS, AND OTHER EXTRANEOUS MATERIALS.
 - STOCKPILED TOPSOIL MEETING THE REQUIREMENTS STATED HEREIN MAY BE USED.
 - PLACE TOPSOIL AND SPREAD UNIFORM OVER ALL LAWN AREAS TO A MINIMUM DEPTH OF 6 INCHES. DO NOT PLACE TOPSOIL WHILE IN A FROZEN OR MUDDY CONDITION.
 - SMOOTH AND UNIFORM FINE TEXTURE IMMEDIATELY PRIOR TO SOODING AND/OR SEEDING. CORRECT ALL SOFT SPOTS AND IRREGULARITIES IN GRADE.
 - JUST PRIOR TO SOODING AND/OR SEEDING, SPREAD AND RAKE LAWN FERTILIZER INTO TOPSOIL AT A RATE OF 10 LBS. PER 1,000 SQ. FT. COMMERCIAL LAWN FERTILIZER SHALL BE A COMPLETE FERTILIZER PARTIALLY DERIVED FROM ORGANIC SOURCES AND CONTAINING 10% NITROGEN, 10% PHOSPHORIC ACID, AND 10% POTASH, ALL BY WEIGHT AS SPECIFIED.
 - BLEND IN NEW SOIL TO MATCH EXISTING GRADES OF ADJACENT PROPERTIES, WHERE APPLICABLE.
 - SEEDING:**
 - WHERE SEEDING IS REQUIRED, ON ALL TURFGRASS GREENSPACE AREAS, PROVIDE FRESH, CLEAN, NEW-CROP SEED IN COMPLIANCE WITH THE STANDARDS ESTABLISHED BY THE OFFICIAL SEED ANALYSIS OF NORTH AMERICA.
 - BLEND 'CAPITAL CITY PARKS' TURFGRASS MIX, BY HERITAGE SEED COMPANY, OR SIMILAR BLEND OF EQUAL PROPORTION AND GERMINATION RATE.
 - MIX FORMULATION:**
 - 20% ELITE KENTUCKY BLUEGRASS VARIETIES
 - 25% ELITE PERENNIAL RYEGRASS VARIETIES
 - 13% ELITE CREEPING RED FESCUE
 - 12% ELITE CHEWINGS FESCUE
 - REQUIRED MINIMUM TEST RESULTS: 98% PURITY AND 85% GERMINATION
 - SOW UNIFORM AT A MINIMUM RATE OF 4-LBS. PER 1,000 SQ. FT.
 - AFTER SEEDING, APPLY MULCH CONSISTING OF CLEAN MARSH HAY, OR STRAW, AS FREE OF WEEDS AS POSSIBLE. UNIFORM OVER ALL SEEDED AREAS.
 - SEEDING SCHEDULE:**
 - SEEDED AREAS PLACED DURING THE SPRING (UNTIL JULY 1ST) PLANTING SEASON SHALL BE GUARANTEED FOR NINETY (90) DAYS FOLLOWING FINAL PLACEMENT.
 - SEEDED AREAS PLACED DURING THE FALL PLANTING SEASON SHALL BE GUARANTEED THROUGH JULY 1ST OF THE FOLLOWING YEAR.
 - REPAIR ALL SEEDED AREAS FOUND DEAD OR NOT IN SATISFACTORY GROWTH. REPAIR/REPLACE ALL SEEDED AREAS WITH SAME TURF GRASS BLEND AS ORIGINALLY SPECIFIED. COST OF REPLACEMENT SHALL BE BORNE BY THE CONTRACTOR, EXCEPT REPLACEMENT/REPAIR REQUIRED DUE TO LOSS OR DAMAGE FROM OWNER OCCUPANCY, VANDALISM, OR NATURAL DISASTER.



ISSUED FOR	DATE
PERMITTING & CONSTRUCTION	06.02.2022
PERMITTING & CONSTRUCTION (SECOND)	06.22.2023

REVISIONS	DATE

CLIENT
RENEWAL UNLIMITED

PROJECT
HEAD START DAYCARE

MAUSTON, WI

DRAWN BY	BUPWARD
CHECKED BY	IS SPECTTCHER
DATE	08.22.2023
JOB NUMBER	19-101
BID SET VOLUME	

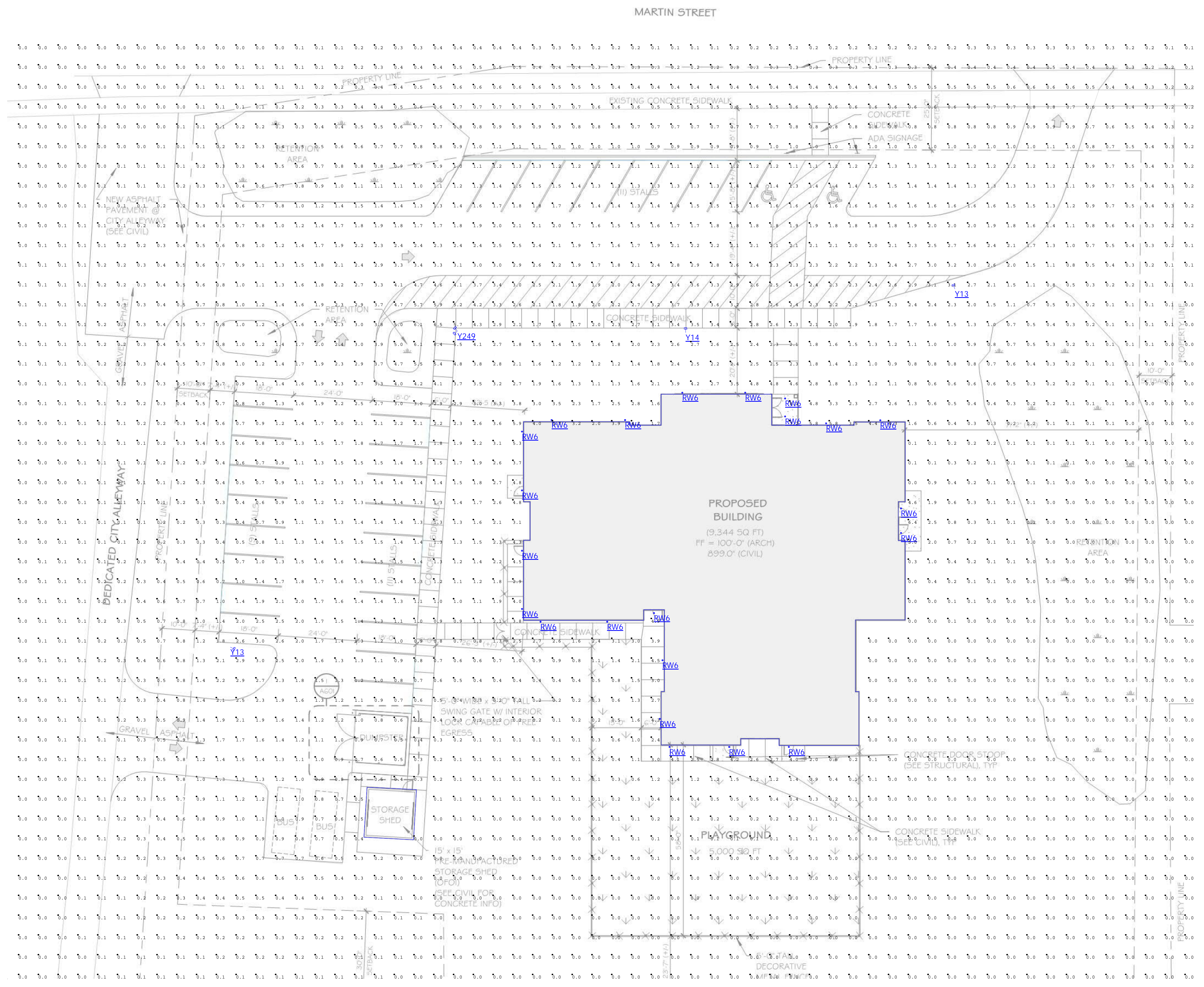
SHEET NAME
LANDSCAPE PLAN

SHEET NUMBER



REVIEWED - CITY OF MAUSTON
2/10/25

L1.0



Calculation Summary						
Label	CalcType	Units	Avg	Max	Min	Avg/Min
CalcPts_1	illuminance	Fc	0.60	8.1	0.0	N.A.
PARKING LOT	illuminance	Fc	1.71	5.9	0.4	4.28

Luminaire Schedule									
Symbol	Qty	Label	Tag	Description	Arrangement	LLF	Luminaire Lumens	Luminaire Watts	
⊙	22	WF6 ALO20 SWW5 90CRI MVOLT 40	RW6	WF6 ALO20 SWW5 90CRI MVOLT 40K recessed wafer light	Single	0.900	1360	15	
—	2	RSX1 LED P3 50K R3	Y13	RSX1 LED P3 50K R3 type 3 distribution pole fixture on 25ft pole with 2.5ft base	Single	0.900	14022	109.44	
—	1	RSX1 LED P3 50K R4	Y14	RSX1 LED P3 50K R4 type 4 distribution pole fixture on 25ft pole with 2.5ft base	Single	0.900	14206	109.44	
⊙	1	RSX1 LED P3 50K R4 2@90	Y249	RSX1 LED P3 50K R4 2@90 type 4 distribution pole fixture on 25ft pole with 2.5ft base	2 @ 90 degrees	0.900	14206	109.44	

REVIEWED - CITY OF MAUSTON
2/10/25

1. STANDARD REFLECTANCE OF 80/50/20 UNLESS NOTED OTHERWISE.
 2. NOT A CONSTRUCTION DOCUMENT- FOR DESIGN PURPOSES ONLY.
 3. STANDARD INDOOR CALC POINTS @ 30" AFF UNLESS NOTED OTHERWISE.
 4. STANDARD OUTDOOR CALC POINTS @ GRADE UNLESS NOTED OTHERWISE.
 5. EGRESS CALC POINTS @ 0'-0" AFF.
 6. PHOTOMETRICS ARE ESTIMATED LIGHTING CALCULATIONS.
 7. VIKING ELECTRIC ASSUMES NO RESPONSIBILITY FOR INSTALLED LIGHT LEVELS DUE TO FIELD CONDITIONS.
 8. VIKING ELECTRIC NOT RESPONSIBLE FOR FINAL REVIEW OF CODE REQUIREMENTS.

#	Date	Comments

Revisions

Drawn By: JB
 Project #: 142112
 Date: 10/22/2024
 Scale: 1" = 15'

PHOTOMETRIC SITE PLAN
 RENEWAL DAYCARE
 MAUSTON, WISCONSIN