



## Ewald Automotive Group

Chrissy Gensch | 262-673-9400 | [chrissy.gensch@ewaldauto.com](mailto:chrissy.gensch@ewaldauto.com)

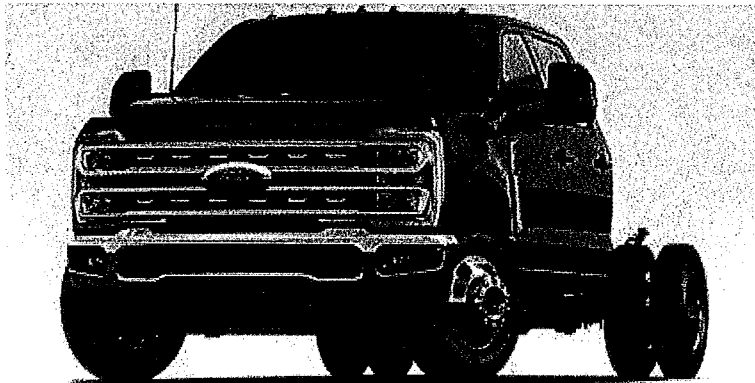
# City of Mauston DPW

Prepared For: Rob Nelson

608-847-4070

[rnelson@mauston.com](mailto:rnelson@mauston.com)

Vehicle: [Fleet] 2025 Ford Super Duty F-350 DRW (W3H) XL 4WD Crew Cab 179" WB 60" CA





# Ewald Automotive Group

Chrissy Gensch | 262-673-9400 | chrissy.gensch@ewaldauto.com

Vehicle: [Fleet] 2025 Ford Super Duty F-350 DRW (W3H) XL 4WD Crew Cab 179" WB 60" CA (✔  
Complete )

## Quote Worksheet

	<b>MSRP</b>
Base Price	\$58,005.00
Dest Charge	\$1,995.00
Total Options	\$1,880.00
<b>Subtotal</b>	<b>\$61,880.00</b>
<b>Subtotal Pre-Tax Adjustments</b>	<b>\$0.00</b>
Less Customer Discount	(\$6,438.00)
<b>Subtotal Discount</b>	<b>(\$6,438.00)</b>
Trade-In	\$0.00
<b>Subtotal Trade-In</b>	<b>\$0.00</b>
<b>Taxable Price</b>	<b>\$55,442.00</b>
Sales Tax	\$0.00
<b>Subtotal Taxes</b>	<b>\$0.00</b>
<b>Subtotal Post-Tax Adjustments</b>	<b>\$0.00</b>
<b>Total Sales Price</b>	<b>\$55,442.00</b>

### Comments:

2025 Ford F350 4WD Crew Cab Chassis 60" CA to the specifications as detailed. Registration fees are not included. Due to current market, lead time can not be guaranteed.

\_\_\_\_\_  
Dealer Signature / Date

\_\_\_\_\_  
Customer Signature / Date

This document contains information considered Confidential between GM and its Clients uniquely. The information provided is not intended for public disclosure. Prices, specifications, and availability are subject to change without notice, and do not include certain fees, taxes and charges that may be required by law or vary by manufacturer or region. Performance figures are guidelines only, and actual performance may vary. Photos may not represent actual vehicles or exact configurations. Content based on report preparer's input is subject to the accuracy of the input provided.

Data Version: 23884. Data Updated: Nov 6, 2024 6:45:00 PM PST.



# Ewald Automotive Group

Chrissy Gensch | 262-673-9400 | chrissy.gensch@ewaldauto.com

Vehicle: [Fleet] 2025 Ford Super Duty F-350 DRW (W3H) XL 4WD Crew Cab 179" WB 60" CA ( Complete )

## Standard Equipment

### Mechanical

- Engine: 7.3L 2V DEVCT NA PFI V8 Gas (STD)
- Transmission: TorqShift 10-Speed Automatic -inc: 10R140 w/neutral idle, SelectShift and selectable drive modes: normal, tow/haul, eco, slippery roads and off-road (STD)
- 3.73 Axle Ratio (STD)
- 50-State Emissions System
- Transmission w/Oil Cooler
- Electronic Transfer Case
- Part-Time Four-Wheel Drive
- 68-Amp/Hr 750CCA Maintenance-Free Battery w/Run Down Protection
- 190 Amp Alternator
- Towing Equipment -inc: Trailer Sway Control
- Trailer Wiring Harness
- 7140# Maximum Payload
- GVWR: 14,000 lb Payload Package
- HD Shock Absorbers
- Front And Rear Anti-Roll Bars
- Firm Suspension
- Hydraulic Power-Assist Steering
- 40 Gal. Fuel Tank
- Single Stainless Steel Exhaust
- Dual Rear Wheels
- Auto Locking Hubs
- Front Suspension w/Coil Springs
- Solid Axle Rear Suspension w/Leaf Springs
- 4-Wheel Disc Brakes w/4-Wheel ABS, Front And Rear Vented Discs, Brake Assist and Hill Hold Control
- Upfitter Switches

### Exterior

- Wheels: 17" Argent Painted Steel -inc: Hub covers/center ornaments not included (STD)
- Tires: LT245/75R17E BSW PLUS A/S (6) -inc: Spare may not be the same as the road tire (STD)

This document contains information considered Confidential between GM and its Clients uniquely. The information provided is not intended for public disclosure. Prices, specifications, and availability are subject to change without notice, and do not include certain fees, taxes and charges that may be required by law or vary by manufacturer or region. Performance figures are guidelines only, and actual performance may vary. Photos may not represent actual vehicles or exact configurations. Content based on report preparer's input is subject to the accuracy of the input provided.

Data Version: 23884. Data Updated: Nov 6, 2024 6:45:00 PM PST.



# Ewald Automotive Group

Chrissy Gensch | 262-673-9400 | chrissy.gensch@ewaldauto.com

Vehicle: [Fleet] 2025 Ford Super Duty F-350 DRW (W3H) XL 4WD Crew Cab 179" WB 60" CA ( Complete )

## Exterior

- Clearcoat Paint
- Black Front Bumper w/Black Rub Strip/Fascia Accent and 2 Tow Hooks
- Black Side Windows Trim and Black Front Windshield Trim
- Black Door Handles
- Black Power Heated Side Mirrors w/Convex Spotter, Manual Folding and Turn Signal Indicator
- Manual Extendable Trailer Style Mirrors
- Fixed Rear Window
- Light Tinted Glass
- Variable Intermittent Wipers
- Aluminum Panels
- Black Grille
- Autolamp Auto On/Off Reflector Halogen Daytime Running Lights Preference Setting Headlamps w/Delay-Off
- Cab Clearance Lights
- Perimeter/Approach Lights

## Entertainment

- Radio w/Seek-Scan, Clock, Speed Compensated Volume Control, Steering Wheel Controls, Voice Activation and External Memory Control
- Radio: AM/FM Stereo w/MP3 Player -inc: 6 speakers
- Fixed Antenna
- 2 LCD Monitors In The Front

## Interior

- 4-Way Driver Seat -inc: Manual Recline and Fore/Aft Movement
- 4-Way Passenger Seat -inc: Manual Recline and Fore/Aft Movement
- 60-40 Folding Split-Bench Front Facing Fold-Up Cushion Rear Seat
- Manual Tilt/Telescoping Steering Column
- Gauges -inc: Speedometer, Odometer, Oil Pressure, Engine Coolant Temp, Tachometer, Transmission Fluid Temp, Engine Hour Meter, Trip Odometer and Trip Computer
- Power Rear Windows
- FordPass Connect 5G Mobile Hotspot Internet Access
- Rear Cupholder

This document contains information considered Confidential between GM and its Clients uniquely. The information provided is not intended for public disclosure. Prices, specifications, and availability are subject to change without notice, and do not include certain fees, taxes and charges that may be required by law or vary by manufacturer or region. Performance figures are guidelines only, and actual performance may vary. Photos may not represent actual vehicles or exact configurations. Content based on report preparer's input is subject to the accuracy of the input provided.

Data Version: 23884. Data Updated: Nov 6, 2024 6:45:00 PM PST.



# Ewald Automotive Group

Chrissy Gensch | 262-673-9400 | chrissy.gensch@ewaldauto.com

Vehicle: [Fleet] 2025 Ford Super Duty F-350 DRW (W3H) XL 4WD Crew Cab 179" WB 60" CA (✔  
Complete )

## Interior

- Remote Keyless Entry w/Integrated Key Transmitter, Illuminated Entry and Panic Button
- Cruise Control w/Steering Wheel Controls
- Manual Air Conditioning
- HVAC -inc: Underseat Ducts
- Illuminated Locking Glove Box
- Interior Trim -inc: Chrome Interior Accents
- Full Cloth Headliner
- Urethane Gear Shifter Material
- HD Vinyl 40/20/40 Split Bench Seat -inc: center armrest, cupholder, storage, 2-way adjustable driver/passenger headrests and driver's side manual lumbar
- Day-Night Rearview Mirror
- Passenger Visor Vanity Mirror
- Full Overhead Console w/Storage and 2 12V DC Power Outlets
- Fade-To-Off Interior Lighting
- Front And Rear Map Lights
- Full Vinyl/Rubber Floor Covering
- Smart Device Remote Engine Start
- SYNC 4 Communications & Entertainment System -inc: enhanced voice recognition, 911 Assist, 8" LCD center stack screen, AppLink and 1 smart-charging USB port
- Instrument Panel Covered Bin and Dashboard Storage
- Power 1st Row Windows w/Driver And Passenger 1-Touch Up/Down
- Delayed Accessory Power
- Power Door Locks w/Autolock Feature
- Driver Information Center
- Trip Computer
- Outside Temp Gauge
- Digital/Analog Appearance
- Seats w/Vinyl Back Material
- Manual Adjustable Front Head Restraints and Manual Adjustable Rear Head Restraints
- Perimeter Alarm

This document contains information considered Confidential between GM and its Clients uniquely. The information provided is not intended for public disclosure. Prices, specifications, and availability are subject to change without notice, and do not include certain fees, taxes and charges that may be required by law or vary by manufacturer or region. Performance figures are guidelines only, and actual performance may vary. Photos may not represent actual vehicles or exact configurations. Content based on report preparer's input is subject to the accuracy of the input provided.

Data Version: 23884. Data Updated: Nov 6, 2024 6:45:00 PM PST.



# Ewald Automotive Group

Chrissy Gensch | 262-673-9400 | chrissy.gensch@ewaldauto.com

Vehicle: [Fleet] 2025 Ford Super Duty F-350 DRW (W3H) XL 4WD Crew Cab 179" WB 60" CA ( Complete )

## Interior

Securilock Anti-Theft Ignition (pats) Immobilizer

2 12V DC Power Outlets

Air Filtration

## Safety-Mechanical

Driveline Traction Control

## Safety-Exterior

Side Impact Beams

## Safety-Interior

Dual Stage Driver And Passenger Seat-Mounted Side Airbags

Pre-Collision Assist with Automatic Emergency Braking (AEB)

Lane Departure Warning

Collision Mitigation-Front

Tire Specific Low Tire Pressure Warning

Outboard Front Lap And Shoulder Safety Belts -inc: Height Adjusters

Safety Canopy System Curtain 1st And 2nd Row Airbags

Dual Stage Driver And Passenger Front Airbags

Rear Child Safety Locks

## WARRANTY

Basic Years: 3

Basic Miles/km: 36,000

Drivetrain Years: 5

Drivetrain Miles/km: 60,000

Corrosion Years: 5

Corrosion Miles/km: Unlimited

Roadside Assistance Years: 5

Roadside Assistance Miles/km: 60,000

This document contains information considered Confidential between GM and its Clients uniquely. The information provided is not intended for public disclosure. Prices, specifications, and availability are subject to change without notice, and do not include certain fees, taxes and charges that may be required by law or vary by manufacturer or region. Performance figures are guidelines only, and actual performance may vary. Photos may not represent actual vehicles or exact configurations. Content based on report preparer's input is subject to the accuracy of the input provided.

Data Version: 23884. Data Updated: Nov 6, 2024 6:45:00 PM PST.



# Ewald Automotive Group

Chrissy Gensch | 262-673-9400 | chrissy.gensch@ewaldauto.com

Vehicle: [Fleet] 2025 Ford Super Duty F-350 DRW (W3H) XL 4WD Crew Cab 179" WB 60" CA ( Complete )

## Selected Model and Options

### MODEL

CODE	MODEL	MSRP
W3H	2025 Ford Super Duty F-350 DRW XL 4WD Crew Cab 179" WB 60" CA	\$58,005.00

### COLORS

CODE	DESCRIPTION
UM	Agate Black Metallic

### ENGINE

CODE	DESCRIPTION	MSRP
99N	Engine: 7.3L 2V DEVCT NA PFI V8 Gas (STD)	\$0.00

### TRANSMISSION

CODE	DESCRIPTION	MSRP
44G	Transmission: TorqShift 10-Speed Automatic -inc: 10R140 w/neutral idle, SelectShift and selectable drive modes: normal, tow/haul, eco, slippery roads and off-road (STD)	\$0.00

### OPTION PACKAGE

CODE	DESCRIPTION	MSRP
640A	Order Code 640A	\$0.00

### AXLE RATIO

CODE	DESCRIPTION	MSRP
X4L	Limited Slip w/4.30 Axle Ratio	\$385.00

### WHEELS

CODE	DESCRIPTION	MSRP
64K	Wheels: 17" Argent Painted Steel -inc: Hub covers/center ornaments not included (STD)	\$0.00

### TIRES

CODE	DESCRIPTION	MSRP
TD8	Tires: LT245/75R17E BSW PLUS A/S (6) -inc: Spare may not be the same as the road tire (STD)	\$0.00

This document contains information considered Confidential between GM and its Clients uniquely. The information provided is not intended for public disclosure. Prices, specifications, and availability are subject to change without notice, and do not include certain fees, taxes and charges that may be required by law or vary by manufacturer or region. Performance figures are guidelines only, and actual performance may vary. Photos may not represent actual vehicles or exact configurations. Content based on report preparer's input is subject to the accuracy of the input provided.

Data Version: 23884. Data Updated: Nov 6, 2024 6:45:00 PM PST.



# Ewald Automotive Group

Chrissy Gensch | 262-673-9400 | chrissy.gensch@ewaldauto.com

Vehicle: [Fleet] 2025 Ford Super Duty F-350 DRW (W3H) XL 4WD Crew Cab 179" WB 60" CA ( Complete )

### PRIMARY PAINT

CODE	DESCRIPTION	MSRP
UM	Agate Black Metallic	\$0.00

### SEAT TYPE

CODE	DESCRIPTION	MSRP
1S	Medium Dark Slate, Cloth 40/20/40 Split Bench Seat -inc: center armrest, cupholder, storage and driver's side manual lumbar	\$315.00

### ADDITIONAL EQUIPMENT - MECHANICAL

CODE	DESCRIPTION	MSRP
41P	Transfer Case Skid Plates	\$100.00

### ADDITIONAL EQUIPMENT - EXTERIOR

CODE	DESCRIPTION	MSRP
153	Front License Plate Bracket	\$0.00
18B	Platform Running Boards	\$445.00

### ADDITIONAL EQUIPMENT - INTERIOR

CODE	DESCRIPTION	MSRP
76C	Exterior Backup Alarm (Pre-Installed)	\$220.00
872	Rear View Camera & Prep Kit -inc: Pre-installed content includes cab wiring and frame wiring to the rear most cross member, Upfitters kit includes camera w/mounting bracket, 20' jumper wire and camera mounting/aiming instructions	\$415.00

<b>Options Total</b>	<b>\$1,880.00</b>
----------------------	-------------------

This document contains information considered Confidential between GM and its Clients uniquely. The information provided is not intended for public disclosure. Prices, specifications, and availability are subject to change without notice, and do not include certain fees, taxes and charges that may be required by law or vary by manufacturer or region. Performance figures are guidelines only, and actual performance may vary. Photos may not represent actual vehicles or exact configurations. Content based on report preparer's input is subject to the accuracy of the input provided.

Data Version: 23884. Data Updated: Nov 6, 2024 6:45:00 PM PST.





# Ewald Automotive Group

Chrissy Gensch | 262-673-9400 | chrissy.gensch@ewaldauto.com

Vehicle: [Fleet] 2025 Ford Super Duty F-350 DRW (W3H) XL 4WD Crew Cab 179" WB 60" CA ( Complete )

## Price Summary

### PRICE SUMMARY

	<b>MSRP</b>
Base Price	\$58,005.00
Total Options	\$1,880.00
Vehicle Subtotal	\$59,885.00
Destination Charge	\$1,995.00
<b>Grand Total</b>	<b>\$61,880.00</b>

This document contains information considered Confidential between GM and its Clients uniquely. The information provided is not intended for public disclosure. Prices, specifications, and availability are subject to change without notice, and do not include certain fees, taxes and charges that may be required by law or vary by manufacturer or region. Performance figures are guidelines only, and actual performance may vary. Photos may not represent actual vehicles or exact configurations. Content based on report preparer's input is subject to the accuracy of the input provided.

Data Version: 23884. Data Updated: Nov 6, 2024 6:45:00 PM PST.



# Ewald Automotive Group

Chrissy Gensch | 262-673-9400 | chrissy.gensch@ewaldauto.com

Vehicle: [Fleet] 2025 Ford Super Duty F-350 DRW (W3H) XL 4WD Crew Cab 179" WB 60" CA ( Complete )

## Optional Equipment

### ENGINE

CODE	DESCRIPTION	MSRP
99N	Engine: 7.3L 2V DEVCT NA PFI V8 Gas (STD)	\$0.00
99T	Engine: 6.7L 4V OHV Power Stroke V8 Turbo Diesel B20 -inc: Operator Commanded Regeneration (OCR), Diesel Exhaust Fluid (DEF) tank, intelligent oil-life monitor and manual push-button engine-exhaust braking, 250 Amp Alternator, Dual 68 AH/65 AGM Battery	\$10,495.00

### TRANSMISSION

CODE	DESCRIPTION	MSRP
44G	Transmission: TorqShift 10-Speed Automatic -inc: 10R140 w/neutral idle, SelectShift and selectable drive modes: normal, tow/haul, eco, slippery roads and off-road (STD)	\$0.00

### OPTION PACKAGE

CODE	DESCRIPTION	MSRP
640A	Order Code 640A	\$0.00

### AXLE RATIO

CODE	DESCRIPTION	MSRP
X37	3.73 Axle Ratio (STD)	\$0.00
X4L	Limited Slip w/4.30 Axle Ratio	\$385.00
X4N	Limited Slip w/4.10 Axle Ratio	\$395.00
X4W	Limited Slip w/4.10 Axle Ratio -inc: Wide track	\$0.00

### WHEELS

CODE	DESCRIPTION	MSRP
64J	Wheels: 17" Forged Polished Aluminum -inc: bright hub covers/center ornaments (4 aluminum outer and 2 steel inner)	\$600.00
64K	Wheels: 17" Argent Painted Steel -inc: Hub covers/center ornaments not included (STD)	\$0.00

### TIRES

CODE	DESCRIPTION	MSRP
TBM	Tires: LT245/75Rx17E BSW A/T -inc: Spare may not be the same as road tire	\$165.00
TD8	Tires: LT245/75Rx17E BSW PLUS A/S (6) -inc: Spare may not be the same as the road tire (STD)	\$0.00

This document contains information considered Confidential between GM and its Clients uniquely. The information provided is not intended for public disclosure. Prices, specifications, and availability are subject to change without notice, and do not include certain fees, taxes and charges that may be required by law or vary by manufacturer or region. Performance figures are guidelines only, and actual performance may vary. Photos may not represent actual vehicles or exact configurations. Content based on report preparer's input is subject to the accuracy of the input provided.

Data Version: 23884. Data Updated: Nov 6, 2024 6:45:00 PM PST.



# Ewald Automotive Group

Chrissy Gensch | 262-673-9400 | chrissy.gensch@ewaldauto.com

Vehicle: [Fleet] 2025 Ford Super Duty F-350 DRW (W3H) XL 4WD Crew Cab 179" WB 60" CA ( Complete )

### ADDITIONAL EQUIPMENT - EXTERIOR

CODE	DESCRIPTION	MSRP
C09	Priced DORA	\$0.00

### ADDITIONAL EQUIPMENT - INTERIOR

CODE	DESCRIPTION	MSRP
41A	Rapid-Heat Supplemental Cab Heater -inc: 410 Amp Dual Alternators, 250 Amp + 160 Amp	\$250.00
43C	120V/400W Outlet -inc: 1 in-dash mounted outlet and 2nd outlet in the console	\$175.00
43K	Pro Power Onboard - 2kW -inc: dual alternators 12V 250 Amp + 24V 150 Amp, Placement and connection of the aux outlet is the responsibility of the final stage manufacturer	\$985.00
52S	Interior Work Surface	\$140.00
60X	Automated Emergency Braking (AEB) Removal -inc: Removes Pre-Collision Assist w/Automated Emergency Barking (AEB) and forward collision warning, auto high beams, post impact braking and audible lane departure warning	\$0.00
76C	Exterior Backup Alarm (Pre-Installed)	\$220.00
872	Rear View Camera & Prep Kit -inc: Pre-installed content includes cab wiring and frame wiring to the rear most cross member, Upfitters kit includes camera w/mounting bracket, 20' jumper wire and camera mounting/aiming instructions	\$415.00

### ADDITIONAL EQUIPMENT - OTHER

CODE	DESCRIPTION	MSRP
79V	COV Required *PRICE TO FOLLOW*	W/A
---	Fleet Advertising Credit *PRICE TO FOLLOW*	W/A

### DEALER INSTALLED OPTIONS

CODE	DESCRIPTION	MSRP
---	Commercial USA Roadside Assistance Kit -inc: Shipped separately from the vehicle for dealer installation	\$230.00
---	First Aid Kit w/Ford Logo -inc: Shipped separately from the vehicle for dealer installation	\$50.00
---	Roadside Assistance Kit w/Ford Logo -inc: Shipped separately from the vehicle for dealer installation	\$70.00
---	Smoke Side Window Deflector Kit (Set of 4) -inc: Low profile by Lund, Shipped separately from the vehicle for dealer installation	\$160.00

### SHIP THRU CODES

CODE	DESCRIPTION	MSRP
311	Ship-Thru: Dejana	\$0.00

This document contains information considered Confidential between GM and its Clients uniquely. The information provided is not intended for public disclosure. Prices, specifications, and availability are subject to change without notice, and do not include certain fees, taxes and charges that may be required by law or vary by manufacturer or region. Performance figures are guidelines only, and actual performance may vary. Photos may not represent actual vehicles or exact configurations. Content based on report preparer's input is subject to the accuracy of the input provided.

Data Version: 23884. Data Updated: Nov 6, 2024 6:45:00 PM PST.



# Ewald Automotive Group

Chrissy Gensch | 262-673-9400 | chrissy.gensch@ewaldauto.com

Vehicle: [Fleet] 2025 Ford Super Duty F-350 DRW (W3H) XL 4WD Crew Cab 179" WB 60" CA ( Complete )

## SHIP THRU CODES

CODE	DESCRIPTION	MSRP
312	Ship-Thru: National Fleet Services	\$0.00
314	Ship-Thru: Reading Equipment & Distribution	\$0.00
315	Ship-Thru: Alt Fuel Innovations, LLC (AFI)	\$0.00
319	Ship-Thru: KC Truck Systems Inc.	\$0.00
31A	Ship-Thru: Altec	\$0.00
31B	Ship-Thru: Reading Equipment	\$0.00
31C	Ship-Thru: Zoresco Equipment	\$0.00
31G	Ship-Thru: NBC Truck Equipment	\$0.00
31K	Ship-Thru: Adrian Steel	\$0.00
31L	Ship-Thru: Holman	\$0.00
31M	Ship-Thru: Manning Truck Equipment	\$0.00
31N	Ship-Thru: Monroe Truck Equipment	\$0.00
31P	Ship-Thru: Roush CleanTech	\$0.00
31S	Ship-Thru: Reading Equipment	\$0.00
31U	Ship-Thru: General Truck Body	\$0.00
31V	Ship-Thru: Knapheide Truck Equipment	\$0.00
31W	Ship-Thru: Knapheide - IN	\$0.00
31Y	Ship Thru: Zoresco Equipment	\$0.00
31Z	Ship-Thru: Knapheide	\$0.00
D9D	Built: Ohio Plant	\$0.00
D9E	Built: Kentucky Truck Plant	\$0.00

This document contains information considered Confidential between GM and its Clients uniquely. The information provided is not intended for public disclosure. Prices, specifications, and availability are subject to change without notice, and do not include certain fees, taxes and charges that may be required by law or vary by manufacturer or region. Performance figures are guidelines only, and actual performance may vary. Photos may not represent actual vehicles or exact configurations. Content based on report preparer's input is subject to the accuracy of the input provided.

Data Version: 23884. Data Updated: Nov 6, 2024 6:45:00 PM PST.