

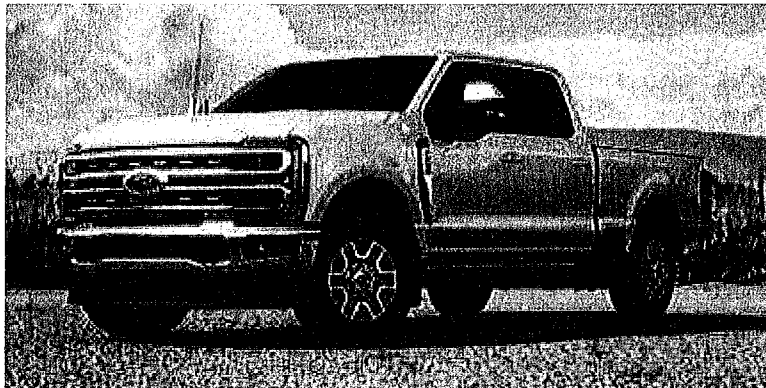


Ewald Automotive Group

Chrissy Gensch | 262-673-9400 | chrissy.gensch@ewaldauto.com

Mauston Fire Department

Vehicle: [Fleet] 2025 Ford Super Duty F-250 SRW (W2B) XL 4WD Crew Cab 6.75' Box





Ewald Automotive Group

Chrissy Gensch | 262-673-9400 | chrissy.gensch@ewaldauto.com

Vehicle: [Fleet] 2025 Ford Super Duty F-250 SRW (W2B) XL 4WD Crew Cab 6.75' Box (✔ Complete)

Quote Worksheet

	MSRP
Base Price	\$51,890.00
Dest Charge	\$2,095.00
Total Options	\$3,495.00
Subtotal	\$57,480.00
Subtotal Pre-Tax Adjustments	\$0.00
Less Customer Discount	(\$4,143.00)
Subtotal Discount	(\$4,143.00)
Trade-In	\$0.00
Subtotal Trade-In	\$0.00
Taxable Price	\$53,337.00
Sales Tax	\$0.00
Subtotal Taxes	\$0.00
Subtotal Post-Tax Adjustments	\$0.00
Total Sales Price	\$53,337.00

This document contains Information considered Confidential between GM and its Clients uniquely. The information provided is not intended for public disclosure. Prices, specifications, and availability are subject to change without notice, and do not include certain fees, taxes and charges that may be required by law or vary by manufacturer or region. Performance figures are guidelines only, and actual performance may vary. Photos may not represent actual vehicles or exact configurations. Content based on report preparer's input is subject to the accuracy of the input provided.

Data Version: 25440. Data Updated: May 12, 2025 6:44:00 PM PDT.

May 13, 2025

Page 2



Ewald Automotive Group

Chrissy Gensch | 262-673-9400 | chrissy.gensch@ewaldauto.com

Vehicle: [Fleet] 2025 Ford Super Duty F-250 SRW (W2B) XL 4WD Crew Cab 6.75' Box (✔ Complete)

Comments:

2025 Ford F250 to the your specifications as detailed. Registration Fees are not included. Due to current market, lead time can not be guaranteed.

Delivery to your location is included in my price.

Dealer Signature / Date

Customer Signature / Date

This document contains information considered Confidential between GM and its Clients uniquely. The information provided is not intended for public disclosure. Prices, specifications, and availability are subject to change without notice, and do not include certain fees, taxes and charges that may be required by law or vary by manufacturer or region. Performance figures are guidelines only, and actual performance may vary. Photos may not represent actual vehicles or exact configurations. Content based on report preparer's input is subject to the accuracy of the input provided.

Data Version: 25440. Data Updated: May 12, 2025 6:44:00 PM PDT.



Ewald Automotive Group

Chrissy Gensch | 262-673-9400 | chrissy.gensch@ewaldauto.com

Vehicle: [Fleet] 2025 Ford Super Duty F-250 SRW (W2B) XL 4WD Crew Cab 6.75' Box (✓ Complete)

Standard Equipment

Mechanical

Engine: 6.8L 2V DEVCT NA PFI V8 Gas (STD)

Transmission: TorqShift-G 10-Speed Automatic -inc: SelectShift and selectable drive modes: normal, eco, slippery roads, tow/haul and off-road (STD)

3.73 Axle Ratio (STD)

GVWR: 10,000 lb Payload Package

50-State Emissions System

Transmission w/Oil Cooler

Electronic Transfer Case

Part-Time Four-Wheel Drive

68-Amp/Hr 750CCA Maintenance-Free Battery w/Run Down Protection

160 Amp Alternator

Class V Towing Equipment -inc: Hitch and Trailer Sway Control

Trailer Wiring Harness

3565# Maximum Payload

HD Gas-Pressurized Shock Absorbers

Front Anti-Roll Bar

Firm Suspension

Hydraulic Power-Assist Steering

34 Gal. Fuel Tank

Single Stainless Steel Exhaust

Auto Locking Hubs

Front Suspension w/Coil Springs

Solid Axle Rear Suspension w/Leaf Springs

4-Wheel Disc Brakes w/4-Wheel ABS, Front And Rear Vented Discs, Brake Assist and Hill Hold Control

Exterior

Wheels: 17" Argent Painted Steel -inc: painted hub covers/center ornaments (STD)

Tires: LT245/75R17E BSW A/S -inc: Spare may not be the same as road tire (STD)

Regular Box Style

Steel Spare Wheel

This document contains Information considered Confidential between GM and its Clients uniquely. The information provided is not intended for public disclosure. Prices, specifications, and availability are subject to change without notice, and do not include certain fees, taxes and charges that may be required by law or vary by manufacturer or region. Performance figures are guidelines only, and actual performance may vary. Photos may not represent actual vehicles or exact configurations. Content based on report preparer's input is subject to the accuracy of the input provided.

Data Version: 25440. Data Updated: May 12, 2025 6:44:00 PM PDT.



Ewald Automotive Group

Chrissy Gensch | 262-673-9400 | chrissy.gensch@ewaldauto.com

Vehicle: [Fleet] 2025 Ford Super Duty F-250 SRW (W2B) XL 4WD Crew Cab 6.75' Box (✔ Complete)

Exterior

- Full-Size Spare Tire Stored Underbody w/Crankdown
- Black Front Bumper w/Black Rub Strip/Fascia Accent and 2 Tow Hooks
- Black Rear Step Bumper
- Black Side Windows Trim and Black Front Windshield Trim
- Black Door Handles
- Black Power Heated Side Mirrors w/Convex Spotter, Manual Folding and Turn Signal Indicator
- Manual Extendable Trailer Style Mirrors
- Fixed Rear Window
- Light Tinted Glass
- Variable Intermittent Wipers
- Aluminum Panels
- Black Grille
- Tailgate Rear Cargo Access
- Tailgate/Rear Door Lock Included w/Power Door Locks
- Boxside Steps
- Autolamp Auto On/Off Reflector Halogen Daytime Running Lights Preference Setting Headlamps w/Delay-Off
- Cargo Lamp w/High Mount Stop Light
- Perimeter/Approach Lights

Entertainment

- Radio w/Seek-Scan, Clock and Speed Compensated Volume Control
- Radio: AM/FM Stereo w/MP3 Player -inc: 6 speakers
- Fixed Antenna
- SYNC 4 -inc: 8" LCD capacitive touchscreen w/swipe capability, wireless phone connection, cloud connected, AppLink w/app catalog, 911 Assist, Apple CarPlay and Android Auto compatibility and digital owner's manual
- 2 LCD Monitors In The Front

Interior

- 4-Way Driver Seat -inc: Manual Recline and Fore/Aft Movement
- 4-Way Passenger Seat -inc: Manual Recline and Fore/Aft Movement
- 60-40 Folding Split-Bench Front Facing Fold-Up Cushion Rear Seat
- Manual Tilt/Telescoping Steering Column

This document contains Information considered Confidential between GM and its Clients uniquely. The information provided is not intended for public disclosure. Prices, specifications, and availability are subject to change without notice, and do not include certain fees, taxes and charges that may be required by law or vary by manufacturer or region. Performance figures are guidelines only, and actual performance may vary. Photos may not represent actual vehicles or exact configurations. Content based on report preparer's input is subject to the accuracy of the input provided.

Data Version: 25440. Data Updated: May 12, 2025 6:44:00 PM PDT.



Ewald Automotive Group

Chrissy Gensch | 262-673-9400 | chrissy.gensch@ewaldauto.com

Vehicle: [Fleet] 2025 Ford Super Duty F-250 SRW (W2B) XL 4WD Crew Cab 6.75' Box (✔ Complete)

Interior

Gauges -inc: Speedometer, Odometer, Oil Pressure, Engine Coolant Temp, Tachometer, Transmission Fluid Temp, Engine Hour Meter, Trip Odometer and Trip Computer

Power Rear Windows

FordPass Connect 5G Mobile Hotspot Internet Access

Rear Cupholder

Compass

Remote Keyless Entry w/Integrated Key Transmitter, Illuminated Entry and Panic Button

Cruise Control w/Steering Wheel Controls

Manual Air Conditioning

HVAC -inc: Underseat Ducts

Illuminated Locking Glove Box

Interior Trim -inc: Chrome Interior Accents

Full Cloth Headliner

Urethane Gear Shifter Material

HD Vinyl 40/20/40 Split Bench Seat -inc: center armrest, cupholder, storage and driver's side manual lumbar

Day-Night Rearview Mirror

Passenger Visor Vanity Mirror

Full Overhead Console w/Storage and 2 12V DC Power Outlets

Fade-To-Off Interior Lighting

Front And Rear Map Lights

Full Vinyl/Rubber Floor Covering

Cab Mounted Cargo Lights

Smart Device Remote Engine Start

Instrument Panel Covered Bin and Dashboard Storage

Power 1st Row Windows w/Driver And Passenger 1-Touch Up/Down

Delayed Accessory Power

Power Door Locks w/Autolock Feature

Driver Information Center

Trip Computer

Outside Temp Gauge

This document contains information considered Confidential between GM and its Clients uniquely. The information provided is not intended for public disclosure. Prices, specifications, and availability are subject to change without notice, and do not include certain fees, taxes and charges that may be required by law or vary by manufacturer or region. Performance figures are guidelines only, and actual performance may vary. Photos may not represent actual vehicles or exact configurations. Content based on report preparer's input is subject to the accuracy of the input provided.

Data Version: 25440. Data Updated: May 12, 2025 6:44:00 PM PDT.



Ewald Automotive Group

Chrissy Gensch | 262-673-9400 | chrissy.gensch@ewaldauto.com

Vehicle: [Fleet] 2025 Ford Super Duty F-250 SRW (W2B) XL 4WD Crew Cab 6.75' Box (✔ Complete)

Interior

Digital/Analog Appearance
Seats w/Vinyl Back Material
Manual Adjustable Front Head Restraints and Manual Adjustable Rear Head Restraints
Perimeter Alarm
Securilock Anti-Theft Ignition (pats) Immobilizer
2 12V DC Power Outlets
Air Filtration

Safety-Mechanical

AdvanceTrac w/Roll Stability Control Electronic Stability Control (ESC) And Roll Stability Control (RSC)
ABS And Driveline Traction Control

Safety-Exterior

Side Impact Beams

Safety-Interior

Dual Stage Driver And Passenger Seat-Mounted Side Airbags
Tire Specific Low Tire Pressure Warning
Safety Canopy System Curtain 1st And 2nd Row Airbags
Outboard Front Lap And Shoulder Safety Belts -inc: Rear Center 3 Point and Height Adjusters
Dual Stage Driver And Passenger Front Airbags
Rear Child Safety Locks
Back-Up Camera

WARRANTY

Basic Years: 3
Basic Miles/km: 36,000
Drivetrain Years: 5
Drivetrain Miles/km: 60,000
Corrosion Years: 5
Corrosion Miles/km: Unlimited
Roadside Assistance Years: 5
Roadside Assistance Miles/km: 60,000

This document contains information considered Confidential between GM and its Clients uniquely. The information provided is not intended for public disclosure. Prices, specifications, and availability are subject to change without notice, and do not include certain fees, taxes and charges that may be required by law or vary by manufacturer or region. Performance figures are guidelines only, and actual performance may vary. Photos may not represent actual vehicles or exact configurations. Content based on report preparer's input is subject to the accuracy of the input provided.

Data Version: 25440. Data Updated: May 12, 2025 6:44:00 PM PDT.



Ewald Automotive Group

Chrissy Gensch | 262-673-9400 | chrissy.gensch@ewaldauto.com

Vehicle: [Fleet] 2025 Ford Super Duty F-250 SRW (W2B) XL 4WD Crew Cab 6.75' Box (✔ Complete)

Selected Model and Options

MODEL

CODE	MODEL	MSRP
W2B	2025 Ford Super Duty F-250 SRW XL 4WD Crew Cab 6.75' Box	\$51,890.00

COLORS

CODE	DESCRIPTION
PQ	Race Red

ENGINE

CODE	DESCRIPTION	MSRP
99A	Engine: 6.8L 2V DEVCT NA PFI V8 Gas (STD)	\$0.00

TRANSMISSION

CODE	DESCRIPTION	MSRP
44F	Transmission: TorqShift-G 10-Speed Automatic -inc: SelectShift and selectable drive modes: normal, eco, slippery roads, tow/haul and off-road (STD)	\$0.00

OPTION PACKAGE

CODE	DESCRIPTION	MSRP
600A	Order Code 600A	\$0.00

AXLE RATIO

CODE	DESCRIPTION	MSRP
X3E	Electronic-Locking w/3.73 Axle Ratio	\$430.00

WHEELS

CODE	DESCRIPTION	MSRP
64A	Wheels: 17" Argent Painted Steel -inc: painted hub covers/center ornaments (STD)	\$0.00

TIRES

CODE	DESCRIPTION	MSRP
TBM	Tires: LT245/75R17E BSW A/T -inc: Spare may not be the same as road tire	\$165.00

This document contains information considered Confidential between GM and its Clients uniquely. The information provided is not intended for public disclosure. Prices, specifications, and availability are subject to change without notice, and do not include certain fees, taxes and charges that may be required by law or vary by manufacturer or region. Performance figures are guidelines only, and actual performance may vary. Photos may not represent actual vehicles or exact configurations. Content based on report preparer's input is subject to the accuracy of the input provided.
Data Version: 25440. Data Updated: May 12, 2025 6:44:00 PM PDT.



Ewald Automotive Group

Chrissy Gensch | 262-673-9400 | chrissy.gensch@ewaldauto.com

Vehicle: [Fleet] 2025 Ford Super Duty F-250 SRW (W2B) XL 4WD Crew Cab 6.75' Box (✔ Complete)

PRIMARY PAINT

CODE	DESCRIPTION	MSRP
PQ	Race Red	\$0.00

SEAT TYPE

CODE	DESCRIPTION	MSRP
AS	Medium Dark Slate, HD Vinyl 40/20/40 Split Bench Seat -inc: center armrest, cupholder, storage and driver's side manual lumbar	\$0.00

ADDITIONAL EQUIPMENT - PACKAGE

CODE	DESCRIPTION	MSRP
17X	FX4 Off-Road Package -inc: Hill Descent Control, Off-Road Specifically Tuned Shock Absorbers, front/rear, Transfer Case & Fuel Tank Skid Plates, Unique FX4 Off-Road Box Decal	\$550.00

ADDITIONAL EQUIPMENT - MECHANICAL

CODE	DESCRIPTION	MSRP
52B	Trailer Brake Controller -inc: smart trailer tow connector	\$300.00
67B	410 Amp Dual Alternators -inc: 250 Amp + 160 Amp	\$115.00
86M	Dual AGM 68 AH Battery	\$210.00

ADDITIONAL EQUIPMENT - EXTERIOR

CODE	DESCRIPTION	MSRP
18B	Platform Running Boards	\$445.00
66L	LED Box Lighting -inc: LED Center High-Mounted Stop Lamp (CHMSL)	\$60.00
76C	Exterior Backup Alarm (Pre-Installed)	\$220.00
85S	Tough Bed Spray-In Bedliner -inc: tailgate-guard, black box bed tie-down hooks and black bed attachment bolts	\$595.00

ADDITIONAL EQUIPMENT - INTERIOR

CODE	DESCRIPTION	MSRP
43C	120V/400W Outlet -inc: 1 in-dash mounted outlet	\$175.00
66S	Upfitter Switches (6) -inc: Located in overhead console	\$230.00

Options Total

\$3,495.00

This document contains information considered Confidential between GM and its Clients uniquely. The information provided is not intended for public disclosure. Prices, specifications, and availability are subject to change without notice, and do not include certain fees, taxes and charges that may be required by law or vary by manufacturer or region. Performance figures are guidelines only, and actual performance may vary. Photos may not represent actual vehicles or exact configurations. Content based on report preparer's input is subject to the accuracy of the input provided.

Data Version: 25440. Data Updated: May 12, 2025 6:44:00 PM PDT.



Vehicle: [Fleet] 2025 Ford Super Duty F-250 SRW (W2B) XL 4WD Crew Cab 6.75' Box (✔ Complete)

Price Summary

PRICE SUMMARY	
	MSRP
Base Price	\$51,890.00
Total Options	\$3,495.00
Vehicle Subtotal	\$55,385.00
Destination Charge	\$2,095.00
Grand Total	\$57,480.00

This document contains information considered Confidential between GM and its Clients uniquely. The information provided is not intended for public disclosure. Prices, specifications, and availability are subject to change without notice, and do not include certain fees, taxes and charges that may be required by law or vary by manufacturer or region. Performance figures are guidelines only, and actual performance may vary. Photos may not represent actual vehicles or exact configurations. Content based on report preparer's input is subject to the accuracy of the input provided.
Data Version: 25440. Data Updated: May 12, 2025 6:44:00 PM PDT.