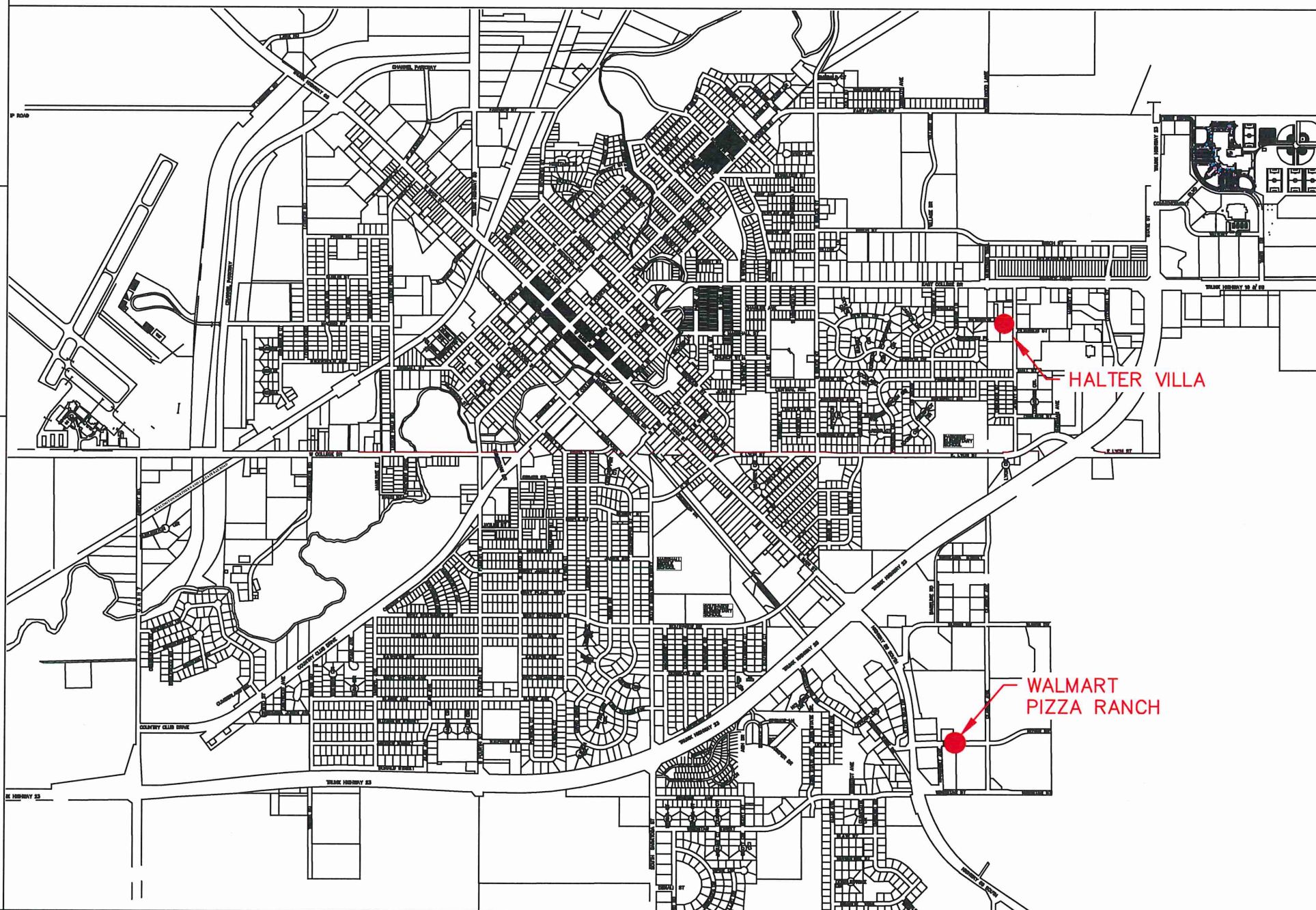


# State Of Minnesota City of Marshall, Minnesota Project Number ST-???

Construction Plans for Sidewalk, Curb and Gutter, Bus Stop Construction, and Miscellaneous Work

## UCAP Bus Shelter Construction Project

Various Locations in Sections 3, 4, 5, 9, and 10  
T111N, R41W



### INDEX

SHEET NO.	DESCRIPTION
1	Title Sheet
2	Estimated Quantities
3	Construction Notes
4	Quantity Tables
5	Typical Sections and Details
6	SWPPP Details
7	Traffic Control Sheet
8	Wal-Mart / Pizza Ranch
9	Plan Sheets
22-27	Pedestrian Curb Ramp Details
28-31	Driveway and Sidewalk Details

I HEREBY CERTIFY THAT THIS PLAN WAS PREPARED BY ME OR UNDER MY DIRECT SUPERVISION AND THAT I AM A DULY LICENSE PROFESSIONAL ENGINEER UNDER THE LAWS OF THE STATE OF MINNESOTA.

APPROVED: CITY ENGINEER, MARSHALL MINNESOTA      DATE: 12/19/2022  
REG NO 53322

APPROVED: TRANSPORTATION DIRECTOR, UCAP      DATE: \_\_\_\_\_

### LEGEND

EXISTING GAS LINE	
EXISTING FIBER LINE	
EXISTING UNDERGROUND POWER	
EXISTING STREET LIGHT	
EXISTING CATCH BASIN	
EXISTING STORM MANHOLE	
EXISTING SANITARY MANHOLE	
EXISTING WATER VALVE	
TRUNCATED DOMES	
PROPOSED CURB & GUTTER	
LANDING AREA (4' x 4' MIN. DIMENSIONS AND MAX 2.0% SLOPE IN ALL DIRECTIONS)	
PEDESTRIAN RAMP (SLOPE SHALL BE BETWEEN 5.0% MIN. AND 8.3% MAX. IN THE DIRECTION SHOWN AND CROSS SLOPE SHALL NOT EXCEED 2.0%)	
BITUMINOUS PATCHING	
SIDEWALK EASEMENT	

### SPECIFICATION REFERENCE

THE 2020 EDITION OF THE MINNESOTA DEPARTMENT OF TRANSPORTATION "STANDARD SPECIFICATIONS FOR CONSTRUCTION" SHALL GOVERN.

ALL TRAFFIC CONTROL DEVICES SHALL CONFORM TO THE LATEST EDITION OF THE MINNESOTA MANUAL ON UNIFORM TRAFFIC CONTROL DEVICES, INCLUDING THE LATEST FIELD MANUAL FOR TEMPORARY TRAFFIC CONTROL ZONE LAYOUTS.

THE CITY OF MARSHALL STANDARD SPECIFICATIONS AND SPECIAL PROVISIONS.

### DESIGN DATA

DESIGN SPEED 30 MPH      STOPPING SIGHT DISTANCE BASED ON  
3.5' HEIGHT OF EYE  
0.5' HEIGHT OF OBJECT

### SCALES

PLAN	VAR.
PROFILE	N/A
INDEX MAP	1"=100'

DISCLAIMER: AERIAL IMAGERY SHOWN ON REMOVAL AND PLAN SHEETS ARE FOR REFERENCE PURPOSES ONLY. IMAGERY SHOWN MAY NOT MATCH SURVEY DATA.

DESIGNED BY: J.R.A.	DATE	REVISIONS	INIT.
DRAWN BY: G.J.S.			
APPROVED BY: G.J.S.			
SCALE: 1"=101'			



ENGINEERING DEPARTMENT  
344 WEST MAIN STREET  
MARSHALL, MINNESOTA  
56258

UCAP BUS SHELTER CONSTRUCTION PROJECT

TITLE SHEET

CITY PROJECT NO.	DATE 12/19/2022
STATE AID PROJECT NO.	SHEET NO. 1 OF 3

Walmart

Walmart  
1221 E. Main Street

Private Drive

Item	1	2
Remove Curb & Gutter	100 LF	15 LF
Remove Pavement	23 SY	3 SY
Remove Sidewalk	551 SF	

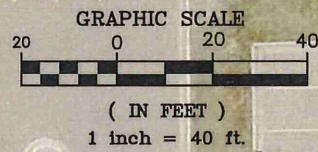
①

Boyer Drive

②

Item	
Remove Sidewalk	118 SF

Pizza Ranch  
1420



Walmart  
1221 E. Main Street

Private Drive

Item	1	2	3
7" Concrete Pavement		66 SY	
Bituminous Pavement Patch	31 SF	168 SF	30 SF
4" Concrete Walk	761 SF	458 SF	
6" Concrete Walk	70 SF		79 SF
Curb & Gutter Design B618	15 LF	91 LF	14 LF
Truncated Domes	9 SF		9 SF
Shelter Foundation		1 EA	
Large Shelter Assembly		1 EA	

①

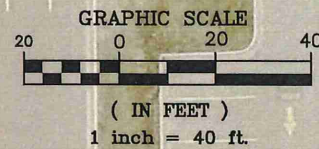
③

②

Boyer Drive

Item	
4" Concrete Walk	185 SF
Shelter Foundation	1 EA
Small Shelter Assembly	1 EA

Pizza Ranch  
1420



DESIGNED BY: G.J.S.	DATE	REVISIONS	INT.
DRAWN BY: G.J.S.			
APPROVED BY: J.R.A.			
SCALE: 1:40			



ENGINEERING DEPARTMENT  
344 WEST MAIN STREET  
MARSHALL, MINNESOTA  
56258

UCAP BUS SHELTER PROJECT  
WAL-MART / PIZZA RANCH

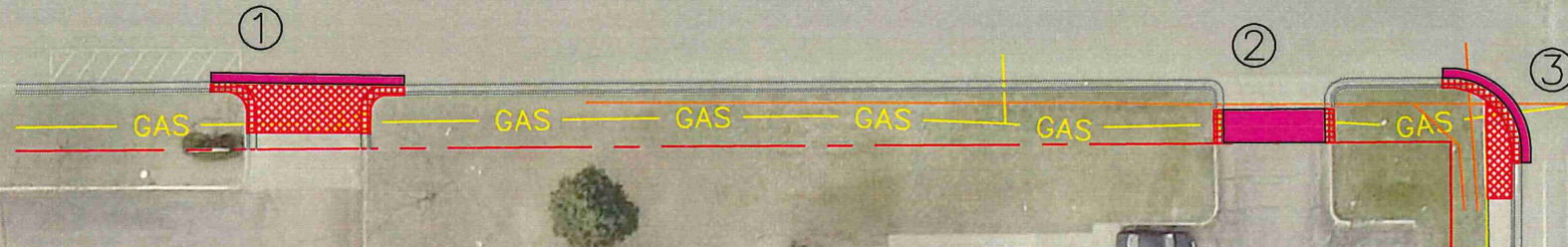
I HEREBY CERTIFY THAT THIS PLAN, SPECIFICATION OR REPORT WAS PREPARED BY ME OR UNDER MY DIRECT SUPERVISION AND THAT I AM A DULY LICENSED ENGINEER UNDER THE LAWS OF THE STATE OF MINNESOTA.  
DATE: \_\_\_\_\_ LICENSE NO. 53322

CITY PROJECT NO.	DATE 12/19/2022
STATE AID PROJECT NO.	SHEET NO. 2 OF 3

# Halter Villa

Peterson Street

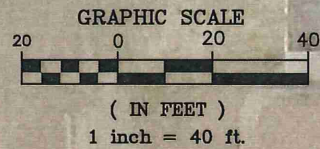
Jewett Street



Item	1	2	3
Remove Curb & Gutter	28 LF	14 LF	25 LF
Remove Pavement	36 SY	16 SY	6 SY
Remove Sidewalk			89 SF

Halter Villa I Apts.  
1400

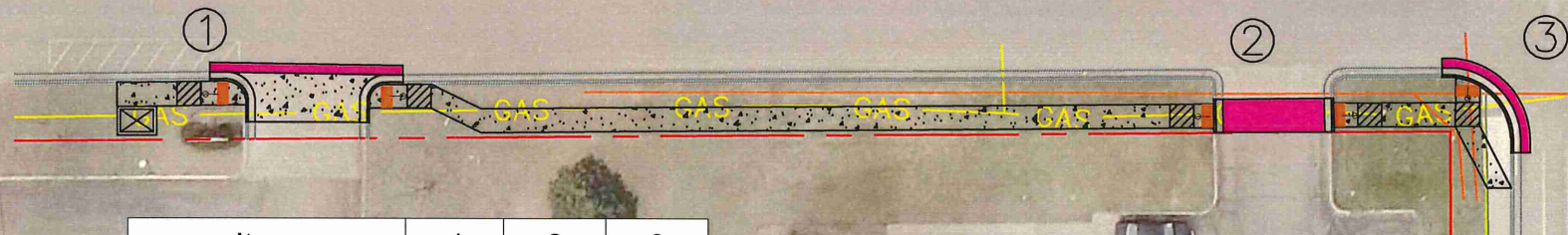
Halter Villa II Apts.  
302 Jewett St.



# Halter Villa

Peterson Street

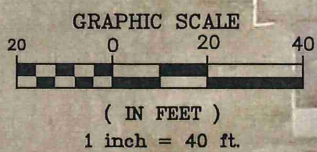
Jewett Street



Item	1	2	3
7" Concrete Pavement	27 SY		
Bituminous Pavement Patch	81 SF	149 SF	59 SF
4" Concrete Walk	64 SF	777 SF	144 SF
6" Concrete Walk	69 SF	108 SF	100 SF
Curb & Gutter Design B618	14 LF	21 LF	32 LF
Truncated Domes	9 SF	18 SF	18 SF
Shelter Foundation	1 EA		
Small Shelter Assembly	1 EA		

Halter Villa I Apts.  
1400

Halter Villa II Apts.  
302 Jewett St.



DESIGNED BY: G.J.S.	DATE	REVISIONS	INIT.
DRAWN BY: G.J.S.			
APPROVED BY: J.R.A.			
SCALE: 1:40			



ENGINEERING DEPARTMENT  
344 WEST MAIN STREET  
MARSHALL, MINNESOTA  
56258

UCAP BUS SHELTER PROJECT

HALTER VILLA / PETERSON STREET

I HEREBY CERTIFY THAT THIS PLAN, SPECIFICATION OR REPORT WAS PREPARED BY ME OR UNDER MY DIRECT SUPERVISION AND THAT I AM A DULY LICENSED ENGINEER UNDER THE LAWS OF THE STATE OF MINNESOTA.

DATE \_\_\_\_\_ LICENSE NO. 53322

CITY PROJECT NO. \_\_\_\_\_ DATE 12/19/2022

STATE AID PROJECT NO. \_\_\_\_\_ SHEET NO. 3 OF 3

### Proposed Bus Stop Locations

Item	Units	Estimated Unit Price	Entire Contract		Location					
			Quantity	Ext. Price	Walmart		Pizza Ranch		Halter Villa (Peterson)	
					Quantity	Ext. Price	Quantity	Ext. Price	Quantity	Ext. Price
Mobilization	LS	\$20,000.00	1	\$20,000	0.34	\$6,800	0.33	\$6,600	0.33	\$6,600
Remove C & G	LF	\$20.00	182	\$3,640	115	\$2,300	0	\$0	67	\$1,340
Remove Pavement	SY	\$28.00	84	\$2,352	26	\$728	0	\$0	58	\$1,624
Remove Sidewalk	SF	\$5.00	744	\$3,720	551	\$2,755	104	\$520	89	\$445
Common Excavation	CY	\$65	89	\$5,785	51.2	\$3,326	4.5	\$293	33.3	\$2,166
7" Concrete Pavement	SY	\$85.00	93	\$7,905	66	\$5,610	0	\$0	27	\$2,295
Bituminous Mix for Patching	SF	\$22.00	518	\$11,396	229	\$5,038	0	\$0	289	\$6,358
4" Concrete Walk	SF	\$17.00	2376	\$40,392	1219	\$20,723	172	\$2,924	985	\$16,745
6" Concrete Walk	SF	\$19.00	426	\$8,094	149	\$2,831	0	\$0	277	\$5,263
Curb & Gutter B618	LF	\$55	187	\$10,285	120	\$6,600	0	\$0	67	\$3,685
Truncated Domes	SF	\$70	63	\$4,410	18	\$1,260	0	\$0	45	\$3,150
Traffic Control	LS	\$15,000	1	\$15,000	0.340	\$5,100	0.330	\$4,950	0.330	\$4,950
Storm Drain Inlet Protection	EACH	\$600	6.0	\$3,600	0	\$0	2	\$1,200	0	\$0
Boulevard Topsoil Borrow	CY	\$50	8.4	\$420	0	\$0	0.6	\$30	0	\$0
Site Restoration	EACH	\$500	3	\$1,500	1	\$500	1	\$500	1	\$500
Shelter Foundation	EACH	\$5,000	3	\$15,000	1	\$5,000	1	\$5,000	1	\$5,000
Small Shelter	EACH	\$9,500	2	\$19,000	0	\$0	1	\$9,500	1	\$9,500
Large Shelter	EACH	\$12,500	1	\$12,500	1	\$12,500	0	\$0	0	\$0
<b>Construction Total</b>				<b>\$184,999</b>		<b>\$81,071</b>		<b>\$31,517</b>		<b>\$69,621</b>
Contingency	10%			<b>\$18,500</b>		<b>\$8,108</b>		<b>\$3,152</b>		<b>\$6,963</b>
Engineering	18%			<b>\$33,300</b>		<b>\$14,593</b>		<b>\$5,674</b>		<b>\$12,532</b>
<b>Project Total</b>				<b>\$236,799</b>		<b>\$103,772</b>		<b>\$40,343</b>		<b>\$89,116</b>

- \* The project will start after funding has been secured.
1. May 1st Design project and get a plan set created.
  2. June 15th advertise project, receive bids July 6th.
  3. Award July 11th.
  4. Construction begins August 15th with a completion day of September 29th
- \* All timelines are based on the availability of funding & contractors schedules  
the City of Marshall will put a October 1st 2024 deadline on the project to get the best bid prices to fit contractors schedules.