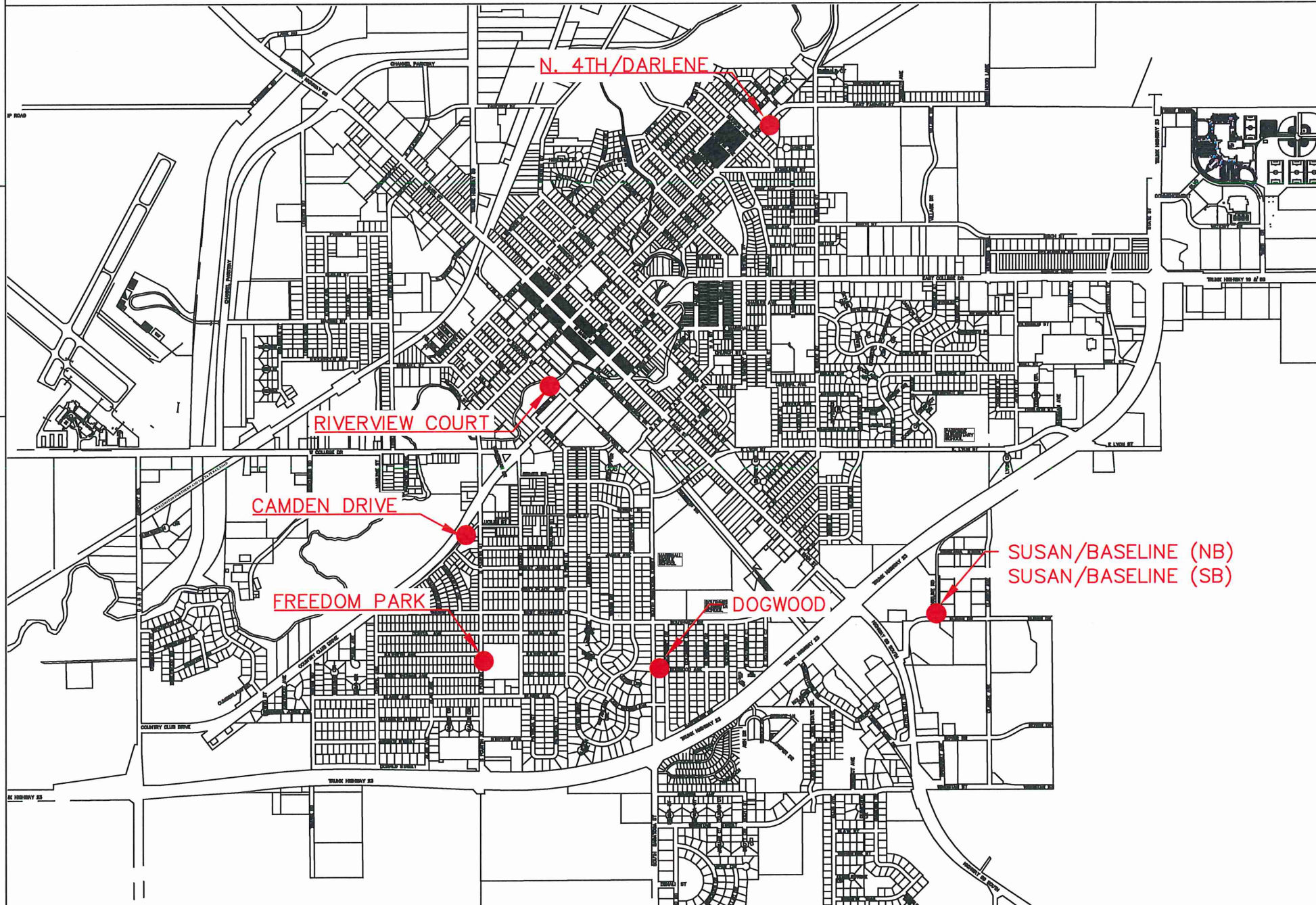


# State Of Minnesota City of Marshall, Minnesota Project Number ST-007

Construction Plans for Sidewalk, Curb and Gutter, Bus Stop Construction, and Miscellaneous Work

## UCAP Bus Shelter Construction Project

Various Locations in Sections 3, 4, 5, 9, and 10  
T111N, R41W



### INDEX

SHEET NO.	DESCRIPTION
1	Title Sheet
2	Estimated Quantities
3	Construction Notes
4	Typical Sections and Details
5	SWPPP Details
6	Traffic Control Sheet
7	Plan Sheets Camden & Riverview
8	Plan Sheets Freedom & Dogwood
9	Plan Sheets Susan & North 4th
10-15	Pedestrian Curb Ramp Details
16-19	Driveway and Sidewalk Details
20	Baseline Easement

### LEGEND

EXISTING GAS LINE	
EXISTING FIBER LINE	
EXISTING UNDERGROUND POWER	
EXISTING STREET LIGHT	
EXISTING CATCH BASIN	
EXISTING STORM MANHOLE	
EXISTING SANITARY MANHOLE	
EXISTING WATER VALVE	
TRUNCATED DOMES	
PROPOSED CURB & GUTTER	
LANDING AREA (4' x 4' MIN. DIMENSIONS AND MAX 2.0% SLOPE IN ALL DIRECTIONS)	
PEDESTRIAN RAMP (SLOPE SHALL BE BETWEEN 5.0% MIN. AND 8.3% MAX. IN THE DIRECTION SHOWN AND CROSS SLOPE SHALL NOT EXCEED 2.0%)	
BITUMINOUS PATCHING	
SIDEWALK EASEMENT	

### SPECIFICATION REFERENCE

THE 2020 EDITION OF THE MINNESOTA DEPARTMENT OF TRANSPORTATION "STANDARD SPECIFICATIONS FOR CONSTRUCTION" AND THE SUPPLEMENTAL SPECIFICATIONS DATED SEPTEMBER 2022 SHALL GOVERN

ALL TRAFFIC CONTROL DEVICES SHALL CONFORM TO THE LATEST EDITION OF THE MINNESOTA MANUAL ON UNIFORM TRAFFIC CONTROL DEVICES, INCLUDING THE LATEST FIELD MANUAL FOR TEMPORARY TRAFFIC CONTROL ZONE LAYOUTS.

THE CITY OF MARSHALL STANDARD SPECIFICATIONS AND SPECIAL PROVISIONS.

### DESIGN DATA

DESIGN SPEED 30 MPH  
STOPPING SIGHT DISTANCE BASED ON  
3.5' HEIGHT OF EYE  
0.5' HEIGHT OF OBJECT

### SCALES

PLAN	20
PROFILE	N/A
INDEX MAP	1"=100'

DISCLAIMER: AERIAL IMAGERY SHOWN ON REMOVAL AND PLAN SHEETS ARE FOR REFERENCE PURPOSES ONLY. IMAGERY SHOWN MAY NOT MATCH SURVEY DATA.

I HEREBY CERTIFY THAT THIS PLAN WAS PREPARED BY ME OR UNDER MY DIRECT SUPERVISION AND THAT I AM A DULY LICENSED PROFESSIONAL ENGINEER UNDER THE LAWS OF THE STATE OF MINNESOTA.

APPROVED: CITY ENGINEER, MARSHALL MINNESOTA DATE REG NO 53322

APPROVED: TRANSPORTATION DIRECTOR, UCAP DATE

DESIGNED BY: G.J.S.

DRAWN BY: G.J.S.

APPROVED BY: J.R.A.

SCALE: 1"=100'

DATE	REVISIONS	INIT.



ENGINEERING DEPARTMENT  
344 WEST MAIN STREET  
MARSHALL, MINNESOTA  
56258

UCAP BUS SHELTER CONSTRUCTION PROJECT

TITLE SHEET

CITY PROJECT NO.  
ST-007

STATE AID PROJECT NO.

DATE  
11/9/2022

SHEET NO.  
1 OF 20

### Camden Drive Removals

CAMDEN DRIVE

Removal	Unit
Common Excavation	3.3 Cu.Yds

REMOVE 3.3 CU.YDS. COMMON EXCAVATION

SOUTH 4TH ST.

### Riverview Apt. Removals

Removal	Unit
Common Excavation	2.1 Cu.Yds

SOUTH SARATOGA

### Camden Drive Install

CAMDEN DRIVE

Install	Units
6" Concrete Landing	40 SF
6" Topsoil Approx. 1' Wide 6" Deep	0.6 Cu. Yd.
Small Shelter	1
Small foundation	1

6" CONCRETE

EXISTING 4" SIDEWALK

1-FOUNDATION  
1-SHELTER

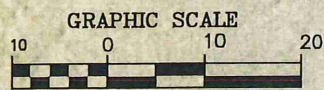
SOUTH 4TH ST.

### Riverview Apt. Install

Install	Units
6" Topsoil Approx. 1' Wide 6" Deep	0.4 Cu. Yd.
Small Shelter	1
Small foundation	1

1-FOUNDATION  
1-SHELTER

SOUTH SARATOGA



( IN FEET )  
1 inch = 20 ft.



( IN FEET )  
1 inch = 20 ft.

DESIGNED BY: G.J.S.	DATE	REVISIONS	INIT.
DRAWN BY: G.J.S.			
APPROVED BY: J.R.A.			
SCALE: 20			



ENGINEERING DEPARTMENT  
344 WEST MAIN STREET  
MARSHALL, MINNESOTA  
56258

UCAP BUS SHELTER PROJECT

CAMDEN DRIVE & RIVERVIEW APT.

I HEREBY CERTIFY THAT THIS PLAN, SPECIFICATION OR REPORT WAS PREPARED BY ME OR UNDER MY DIRECT SUPERVISION AND THAT I AM A DULY LICENSED ENGINEER UNDER THE LAWS OF THE STATE OF MINNESOTA.  
DATE \_\_\_\_\_ LICENSE NO. 53322

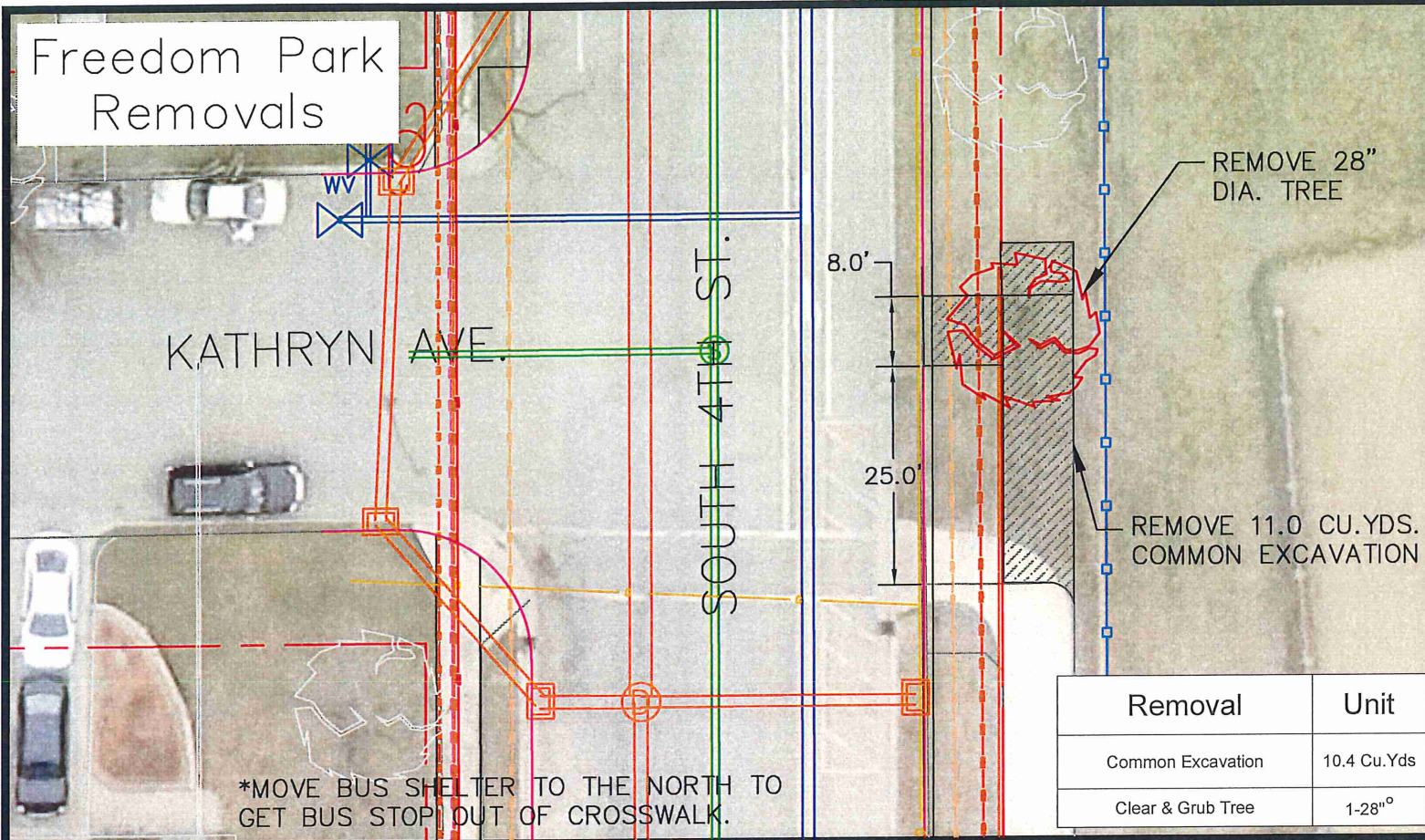
CITY PROJECT NO.  
ST-007

DATE  
11/9/2022

STATE AID PROJECT NO.

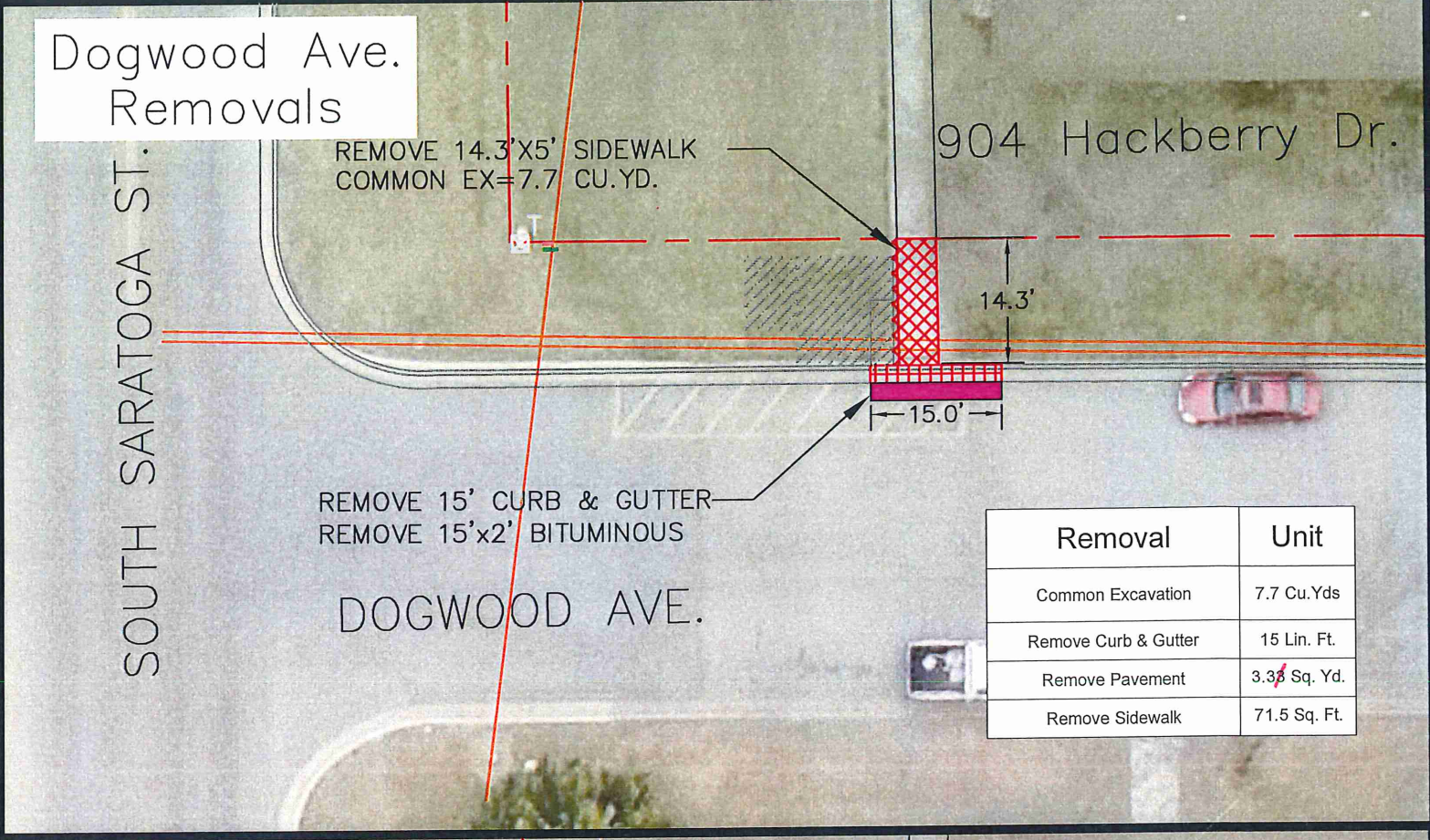
SHEET NO.  
7 OF 20

### Freedom Park Removals



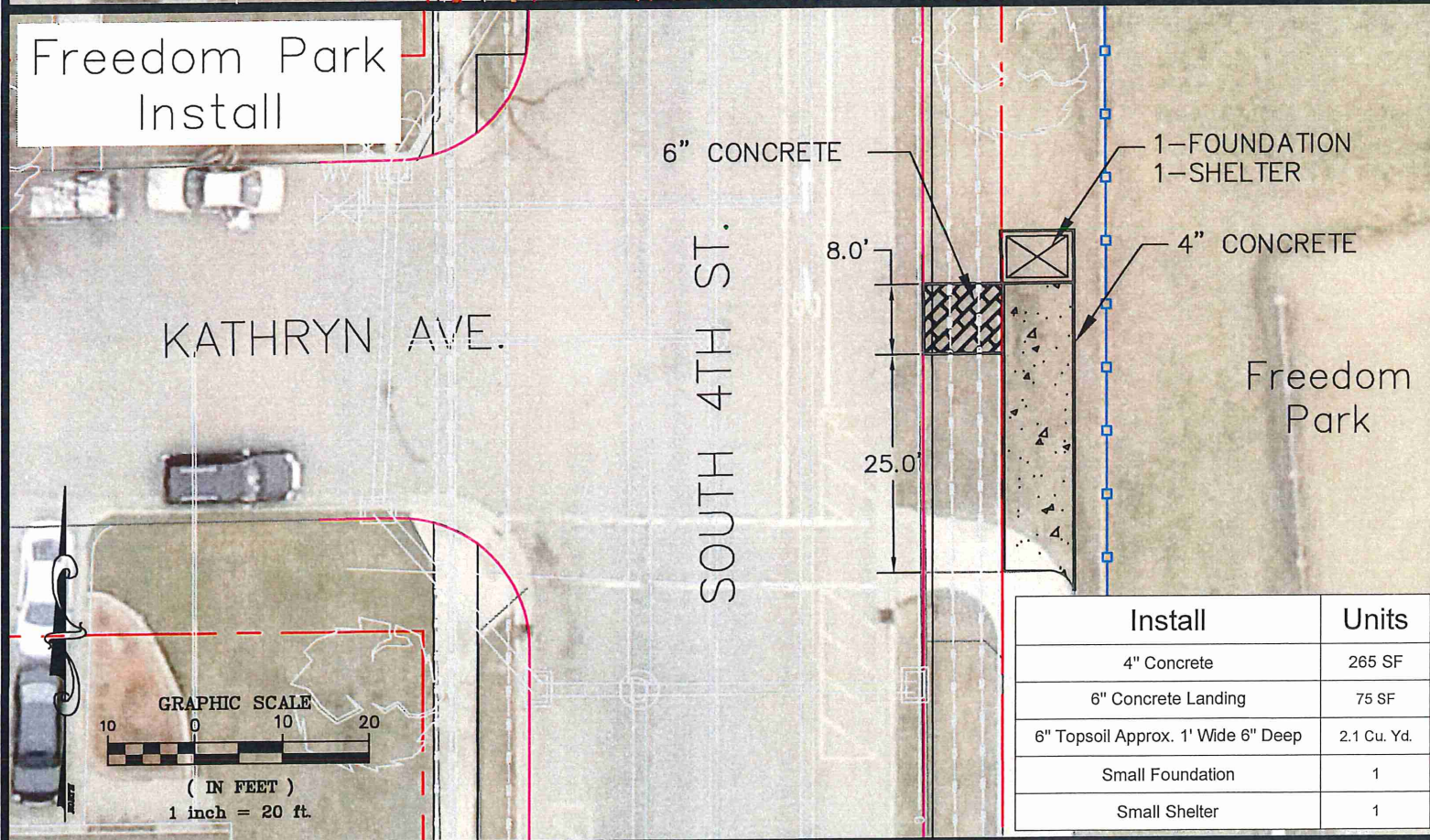
Removal	Unit
Common Excavation	10.4 Cu.Yds
Clear & Grub Tree	1-28" <sup>o</sup>

### Dogwood Ave. Removals

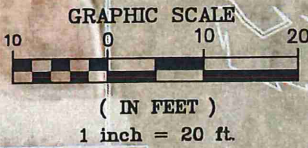


Removal	Unit
Common Excavation	7.7 Cu.Yds
Remove Curb & Gutter	15 Lin. Ft.
Remove Pavement	3.3 <del>5</del> Sq. Yd.
Remove Sidewalk	71.5 Sq. Ft.

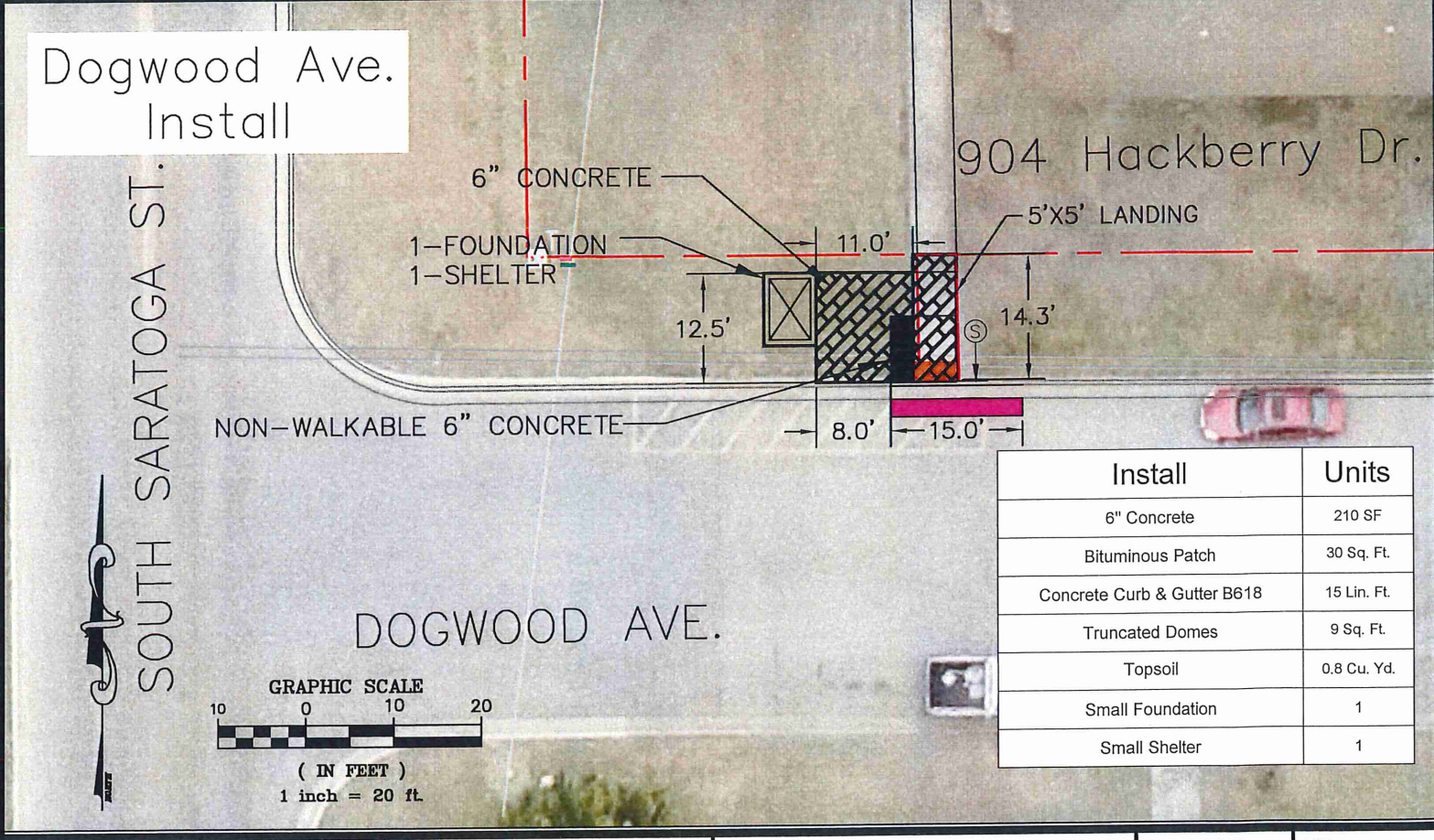
### Freedom Park Install



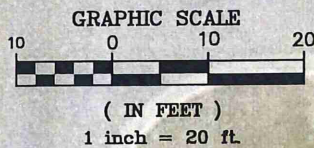
Install	Units
4" Concrete	265 SF
6" Concrete Landing	75 SF
6" Topsoil Approx. 1' Wide 6" Deep	2.1 Cu. Yd.
Small Foundation	1
Small Shelter	1



### Dogwood Ave. Install



Install	Units
6" Concrete	210 SF
Bituminous Patch	30 Sq. Ft.
Concrete Curb & Gutter B618	15 Lin. Ft.
Truncated Domes	9 Sq. Ft.
Topsoil	0.8 Cu. Yd.
Small Foundation	1
Small Shelter	1



DESIGNED BY: G.J.S.  
DRAWN BY: G.J.S.  
APPROVED BY: J.R.A.  
SCALE: 20

DATE	REVISIONS	INT.

**MARSHALL**

ENGINEERING DEPARTMENT  
344 WEST MAIN STREET  
MARSHALL, MINNESOTA  
56258

UCAP BUS SHELTER PROJECT  
FREEDOM PARK & DOGWOOD AVE.

I HEREBY CERTIFY THAT THIS PLAN, SPECIFICATION OR REPORT WAS PREPARED BY ME OR UNDER MY DIRECT SUPERVISION AND THAT I AM A DULY LICENSED ENGINEER UNDER THE LAWS OF THE STATE OF MINNESOTA.  
DATE: \_\_\_\_\_ LICENSE NO. 53322

CITY PROJECT NO. ST-007  
DATE 11/9/2022  
STATE AID PROJECT NO. \_\_\_\_\_  
SHEET NO. 8 OF 20

### Susan & Baseline Removal

REMOVE 6.6 CU.YDS. COMMON EXCAVATION

REMOVE 2-12" DIA. TREE

REMOVE 90 SQ. FT. SIDEWALK

REMOVE 4.1 CU.YDS. COMMON EXCAVATION

Removal	Unit
Common Excavation East	4.1 Cu.Yds
Remove Sidewalk East	90 Sq. Ft.
Clear & Grub Tree West	2-12"°
Common Excavation West	9.1 Cu.Yds

### North 4th Removals

NORTH 4TH STREET

Removal	Unit
Common Excavation	6.6 Cu.Yds
Remove Sidewalk	175 Sq. Ft.

REMOVE 6.6 CU.YDS. COMMON EXCAVATION

\*DEPRESS SIDEWALK SO LANDING WILL BE LESS STEEP.

### Susan & Baseline Install

1-FOUNDATION  
1-SHELTER

6" CONCRETE

1-FOUNDATION  
1-SHELTER

4" SIDEWALK

Install	Units
4" Concrete Sidewalk East	90 Sq. Ft.
6" Concrete Walk East	33 Sq. Ft.
Topsoil East	1 Cu. Yd.
Small Foundation East	1
Small Shelter East	1
4" Concrete Sidewalk West	185 Sq. Ft.
6" Concrete Walk West	80 Sq. Ft.
Topsoil West	2 Cu. Yd.
Small Foundation West	1
Small Shelter West	1

### North 4th Install

NORTH 4TH STREET

Install	Units
Topsoil	1.5 Cu. Yd.
4" Concrete Sidewalk	175 Sq. Ft.
6" Concrete Walk	77 Sq. Ft.
Small Foundation	1
Small Shelter	1


6" CONCRETE

1-FOUNDATION  
1-SHELTER

4" CONCRETE

DESIGNED BY: G.J.S.  
DRAWN BY: G.J.S.  
APPROVED BY: J.R.A.  
SCALE: 20

DATE	REVISIONS	INIT.



**ENGINEERING DEPARTMENT**  
344 WEST MAIN STREET  
MARSHALL, MINNESOTA  
56258

UCAP BUS SHELTER PROJECT  
SUSAN, BASELINE & NORTH 4TH

I HEREBY CERTIFY THAT THIS PLAN, SPECIFICATION OR REPORT WAS PREPARED BY ME OR UNDER MY DIRECT SUPERVISION AND THAT I AM A DULY LICENSED ENGINEER UNDER THE LAWS OF THE STATE OF MINNESOTA.  
DATE: \_\_\_\_\_ LICENSE NO. 53322

CITY PROJECT NO. ST-007  
STATE AID PROJECT NO. \_\_\_\_\_  
DATE 11/9/2022  
SHEET NO. 9 OF 20