

# KWIK TRIP 1273

### INSTRUMENT OF DEDICATION

Know all persons by these presents: That Kwik Trip, Inc., a Wisconsin corporation, fee owner of the following described property situated in the County of Lyon, State of Minnesota:

The Land referred to herein below is situated in the County of Lyon, State of MN, and is described as follows:

That part of the East Half of the Northeast Quarter of Section 5, Township 111 North Range 41 West, Lyon County, Minnesota, described as:

Commencing at the northeast corner of said Section 5; thence South 01 degrees 03 minutes 16 seconds East, (Minnesota County Coordinate System - Lyon County Zone - NAD83 - 2011), along the east line of the Northeast Quarter of said Section 5, a distance of 893.23 feet; thence continuing South 01 degrees 03 minutes 16 seconds East, along said east line, a distance of 110.17 feet; thence North 61 degrees 50 minutes 42 seconds West, a distance of 50.50 feet to the point of beginning; thence South 61 degrees 50 minutes 42 seconds East, back along the previously described course, a distance of 50.50 feet to a point on the east line of the Northeast Quarter of said Section 5; thence South 01 degrees 03 minutes 16 seconds East, along said east line, a distance of 70.44 feet; thence South 44 degrees 15 minutes 34 seconds West, a distance of 54.24 feet; thence South 01 degrees 01 minutes 56 seconds East, a distance of 131.56 feet; thence southerly a distance of 363.30 feet along a tangential curve to the right, having a radius of 2251.48 feet, a central angle of 09 degrees 14 minutes 43 seconds; thence South 44 degrees 15 minutes 34 seconds West, a distance of 126.80 feet; thence North 45 degrees 41 minutes 42 seconds West, a distance of 273.00 feet; thence North 44 degrees 15 minutes 34 seconds East, a distance of 204.52 feet; thence North 45 degrees 44 minutes 26 seconds West, a distance of 57.00 feet; thence North 44 degrees 15 minutes 34 seconds East, a distance of 24.00 feet; thence North 45 degrees 44 minutes 26 seconds West, a distance of 98.60 feet to the point of intersection with a line which bears South 44 degrees 15 minutes 34 seconds West from the point of beginning; thence North 44 degrees 15 minutes 34 seconds East, a distance of 355.64 feet to the point of beginning.

AND

That part of the East Half of the Northeast Quarter of Section 5, Township 111 North Range 41 West, Lyon County, Minnesota, described as:

Commencing at the northeast corner of said Section 5; thence South 01 degrees 03 minutes 16 seconds East, (Minnesota County Coordinate System - Lyon County Zone - NAD83 - 2011), along the east line of the Northeast Quarter of said Section 5, a distance of 893.23 feet; thence continuing South 01 degrees 03 minutes 16 seconds East, along said east line, a distance of 110.17 feet; thence continuing South 01 degrees 03 minutes 16 seconds East, along said east line, a distance of 70.44 feet; thence South 44 degrees 15 minutes 34 seconds West, a distance of 54.24 feet; thence South 01 degrees 01 minutes 56 seconds East, a distance of 131.56 feet; thence southerly a distance of 363.30 feet along a tangential curve to the right, having a radius of 2251.48 feet, a central angle of 09 degrees 14 minutes 43 seconds; thence South 44 degrees 15 minutes 34 seconds West, a distance of 126.80 feet; thence North 45 degrees 41 minutes 42 seconds West, a distance of 273.00 feet to the point of beginning; thence North 44 degrees 15 minutes 34 seconds East, a distance of 204.52 feet; thence North 45 degrees 44 minutes 26 seconds West, a distance of 57.00 feet; thence North 44 degrees 15 minutes 34 seconds East, a distance of 24.00 feet; thence North 45 degrees 44 minutes 26 seconds West, a distance of 98.60 feet; thence South 44 degrees 15 minutes 34 seconds West, a distance of 228.40 feet; thence South 45 degrees 41 minutes 42 seconds East, a distance of 155.60 feet to the point of beginning.

Has caused the same to be surveyed and platted as KWIK TRIP 1273 and does hereby dedicate to the public for the public use the public ways and the utility easements as created by this plat.

In witness whereof, said Kwik Trip, Inc., a Wisconsin corporation, has caused these presents to be signed by its proper officer this \_\_\_\_ day of \_\_\_\_\_, 2024.

\_\_\_\_\_  
\_\_\_\_\_,

### NOTARY CERTIFICATE

State of \_\_\_\_\_

County of \_\_\_\_\_

The foregoing instrument was acknowledged before me, this \_\_\_\_ day of \_\_\_\_\_, 2024 by \_\_\_\_\_, \_\_\_\_\_ of Kwik Trip, Inc., a Wisconsin corporation on behalf of the corporation.

\_\_\_\_\_  
\_\_\_\_\_, Notary Public,

State of \_\_\_\_\_

My Commission Expires \_\_\_\_\_

### SURVEYOR'S CERTIFICATE

I, Janelle Fowlds, do hereby certify that this plat was prepared by me or under my direct supervision; that I am a duly Licensed Land Surveyor in the State of Minnesota; that this plat is a correct representation of the boundary survey; that all mathematical data and labels are correctly designated on this plat; that all monuments depicted on this plat have been, or will be correctly set within one year; that all water boundaries and wet lands, as defined in Minnesota Statutes, Section 505.01, Subd. 3, as of the date of this certificate are shown and labeled on this plat; and all public ways are shown and labeled on this plat.

Dated this \_\_\_\_ day of \_\_\_\_\_, 2024.

\_\_\_\_\_  
Janelle Fowlds, Land Surveyor

Minnesota License Number 26748

### NOTARY'S CERTIFICATE

This instrument was acknowledged before me on \_\_\_\_ day of \_\_\_\_\_, 2024, by Janelle Fowlds, Land Surveyor, Minnesota License No. 26748.

\_\_\_\_\_  
Nathan P Myhra, Notary Public

Notary Public-Minnesota

My Commission Expires Jan. 31, 2028

### MARSHALL CITY COUNCIL

This plat of KWIK TRIP 1273 was approved and accepted by the City Council of Marshall, Minnesota at a regular meeting thereof held this \_\_\_\_ day of \_\_\_\_\_, 2024, and said plat is in compliance with the provisions of Minnesota Statutes, Section 505.03, Subd. 2. and City Ordinances and that this plat has been submitted to and written comments have been received from the Commissioner of Transportation.

City Council, City of Marshall

\_\_\_\_\_  
Mayor

\_\_\_\_\_  
City Clerk

### COUNTY AUDITOR AND TREASURER

I hereby certify that the current and delinquent taxes on the lands described within are paid and the transfer is entered this \_\_\_\_ day of \_\_\_\_\_, 2024.

\_\_\_\_\_  
Auditor/Treasurer, Lyon County

### COUNTY RECORDER

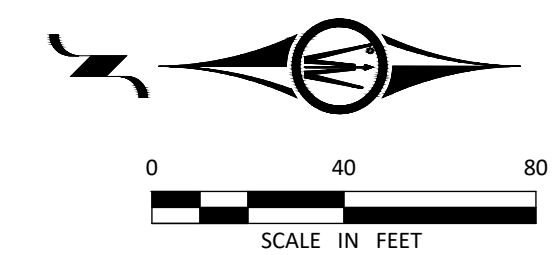
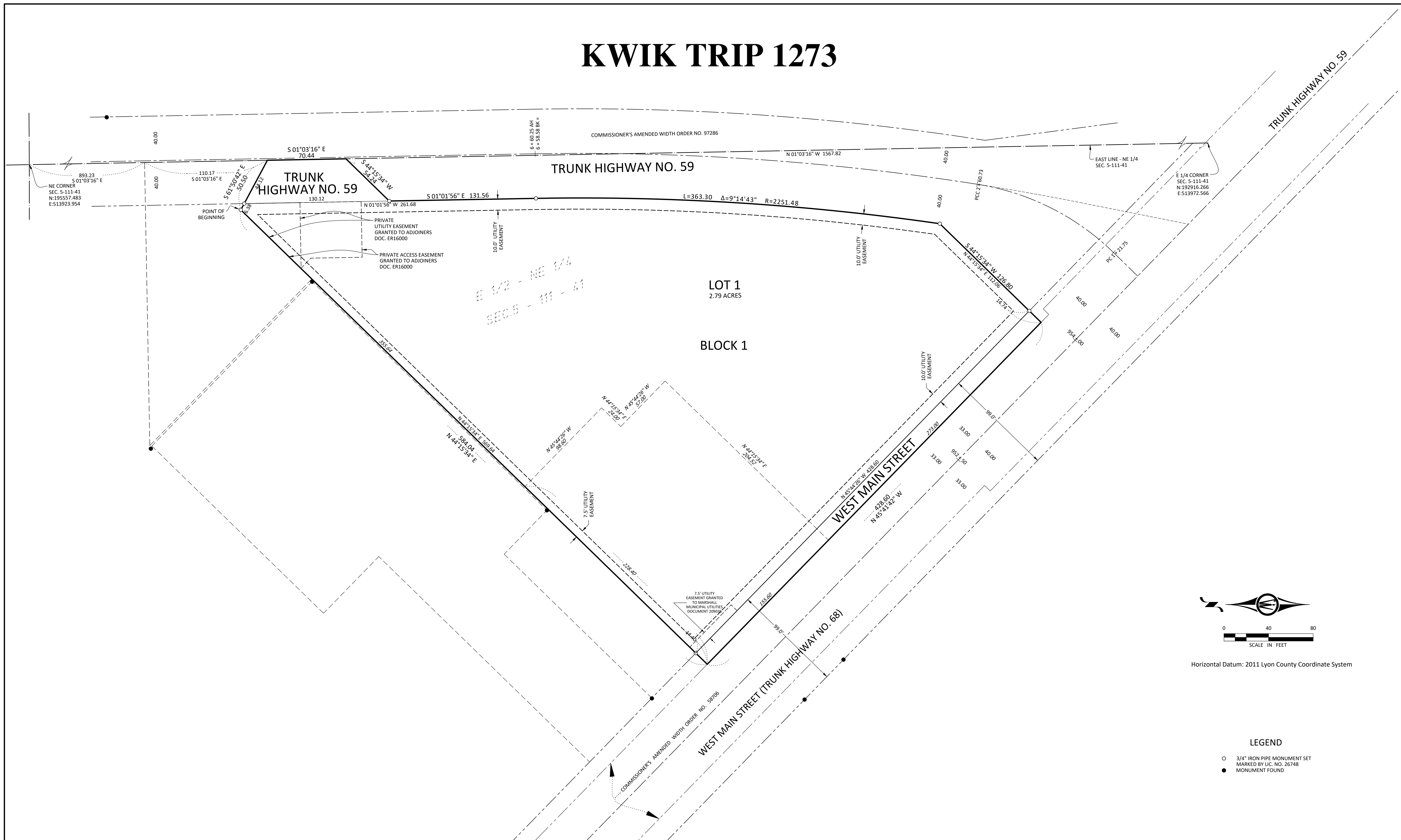
I hereby certify that this plat was filed in this office this \_\_\_\_ day of \_\_\_\_\_, 2024, \_\_\_\_ O' Clock \_\_\_\_M. as Document Number \_\_\_\_\_, Envelope Number \_\_\_\_\_.

\_\_\_\_\_  
Recorder, Lyon County



VICINITY MAP  
NOT TO SCALE

# KWIK TRIP 1273



Horizontal Datum: 2011 Lyon County Coordinate System

### LEGEND

- 3/4" IRON PIPE MONUMENT SET MARKED BY LIC. NO. 26748
- MONUMENT FOUND