

State Of Minnesota City of Marshall, Minnesota

Project Number SAP 139-121-004

Construction Plans for Bituminous Resurfacing, Pedestrian Curb Ramp Improvements
and Curb & Gutter repairs for:

Channel Parkway Resurfacing
FROM A POINT 1378 FEET EAST OF THE SOUTHWEST CORNER
OF SEC. 5, T111N, R41W TO A POINT 701 FEET NORTH OF
THE SOUTHEAST CORNER OF SEC. 32, T112N, R41W

SECTION 5 T111N, R41W
and SECTION 32 T112N, R41W

INDEX

SHEET NO.	DESCRIPTION
1	Title Sheet
2	Estimated Quantity Sheet
3	Construction Notes Sheet
4	Quantity Tables Sheet
5	Typical Section Sheet
6-7	SWPPP Sheet
8-14	Standard Plans & Plates
15-18	Removal Sheet
19-21	ADA Ramp Sheet
22-25	Plan Sheet
26-29	Striping Detail Sheet
30	Cross Sections

This Plan Contains 30 Sheets.

LEGEND

ALIGNMENT STATIONS	
EXISTING GAS LINE	
EXISTING COMMUNICATION LINE	
EXISTING FIBER LINE	
EXISTING UNDERGROUND POWER	
EXISTING STREET LIGHT	
EXISTING CATCH BASIN	
EXISTING STORM MANHOLE	
EXISTING SANITARY MANHOLE	
EXISTING HYDRANT	
EXISTING WATER VALVE	
NEW CATCH BASIN	
NEW SANITARY MANHOLE	
NEW STORM MANHOLE	
BENCHMARK TOP NUT HYDRANT	

SPECIFICATION REFERENCE

THE 2020 EDITION OF THE MINNESOTA DEPARTMENT OF TRANSPORTATION "STANDARD SPECIFICATIONS FOR CONSTRUCTION" AND THE "SUPPLEMENTAL SPECIFICATIONS" DATED SEPTEMBER 2022 SHALL GOVERN.

ALL TRAFFIC CONTROL DEVICES SHALL CONFORM TO THE LATEST EDITION OF THE MINNESOTA MANUAL ON UNIFORM TRAFFIC CONTROL DEVICES, INCLUDING THE LATEST FIELD MANUAL FOR TEMPORARY TRAFFIC CONTROL ZONE LAYOUTS.

THE CITY OF MARSHALL STANDARD SPECIFICATIONS AND SPECIAL PROVISIONS.

PROJECT LENGTH

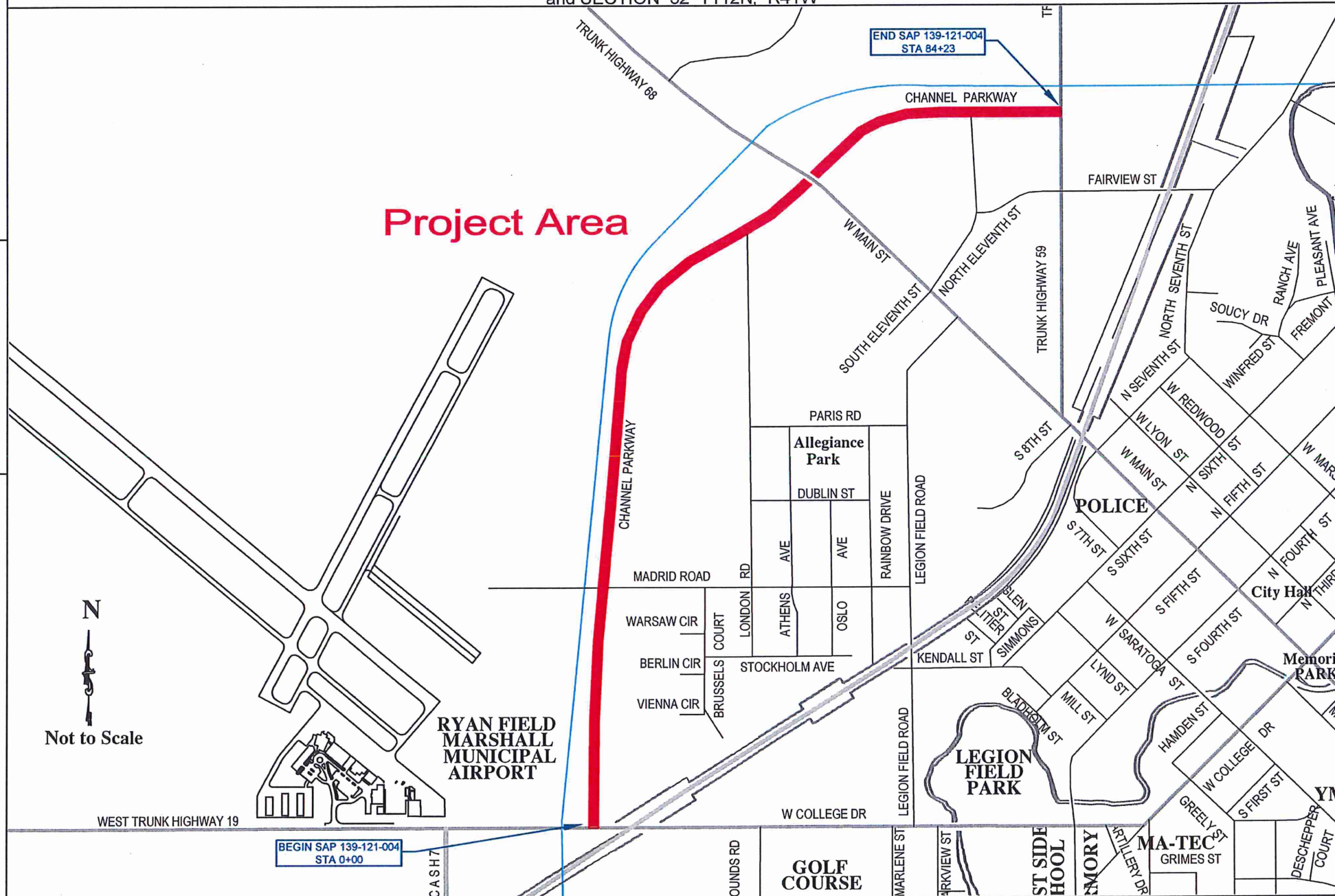
	FEET	MILES
GROSS LENGTH	8421	1.595
EXCEPTIONS	48	0.009
NET LENGTH	8373	1.586

DESIGN DATA

DESIGN SPEED - 45 MPH	TRAFFIC LANES - 4
CURRENT ADT(2022) - 3050	PARKING LANES - 0
PROJECTED ADT - 4180	
TON DESIGN - 10	360' STOPPING SIGHT DISTANCE BASED ON:
FUNCTIONAL CLASS: -MAJOR COLLECTOR	-3.5' HEIGHT OF EYE
	-0.5' HEIGHT OF OBJECT

SCALES

PLAN	1"=50'
PROFILE	1"=5'
INDEX MAP	1"=100'
GENERAL LAYOUT	1"=50'



I HEREBY CERTIFY THAT THIS PLAN WAS PREPARED BY ME OR UNDER MY DIRECT SUPERVISION AND THAT I AM A DULY LICENSED PROFESSIONAL ENGINEER UNDER THE LAWS OF THE STATE OF MINNESOTA.

Jason Anderson
APPROVED: CITY ENGINEER, MARSHALL MINNESOTA DATE: 1-4-23
REG NO 53322

Jason Anderson
CITY ENGINEER, PRINTED NAME DATE: 1-4-23

Todd Broadwell
Digitally signed by Todd Broadwell
Date: 2023.01.10 08:59:44 -06'00'

DISTRICT STATE AID ENGINEER: REVIEWED FOR COMPLIANCE WITH STATE AID RULES/POLICY

Todd Broadwell
Digitally signed by Todd Broadwell
Date: 2023.01.10 09:00:57 -06'00'

APPROVED FOR STATE AID FUNDING: STATE AID ENGINEER

DESIGNED BY: JRL	DATE	REVISIONS	INIT.
DRAWN BY: JRL			
APPROVED BY: JRA			
SCALE: N/A			

MARSHALL

ENGINEERING DEPARTMENT
344 WEST MAIN STREET
MARSHALL, MINNESOTA
56258

Channel Parkway
Title Sheet

CITY PROJECT NO. ST-008	DATE 12/21/2022
STATE AID PROJECT NO. 139-121-004	SHEET NO. 1 OF 30

