



# College Drive/Hwy 19 Reconstruction Project

## Who did we hear from?

Community members provided feedback about the proposed improvements to intersections.



**367** Visitors attended the **online virtual open house and live online presentation**



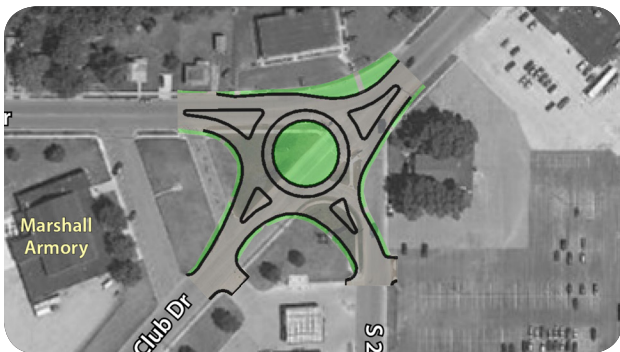
Over **600** People participated in the **online survey**



## How will this feedback be used?

MnDOT uses public feedback as one of many factors, including technical analysis and engineering standards when making project decisions.

## Recommendation: Construct roundabout at Hwy 19/College Drive and Country Club Dr



### Benefits

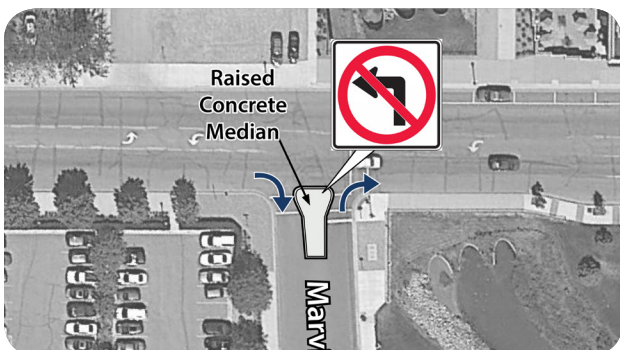
- » Improves safety
- » Reduces traffic delay
- » Slows down traffic
- » Accommodates truck traffic
- » Makes it easier to get across town



### Moving forward:

The safety benefits, along with support from community members make a roundabout the option we are moving forward with.

## Recommendation: Change intersection to right-in/right-out



### Benefits

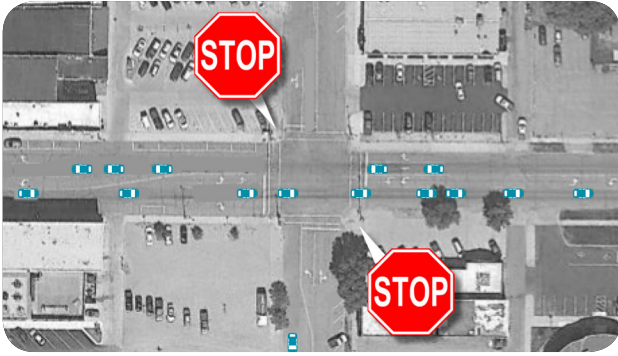
- » Improves pedestrian safety
- » Reduces traffic delay
- » Make it easier to get across town
- » Allows for longer turn lanes at Main Street



### Moving forward:

The safety and traffic benefits along with support from community members make the the right-in/right-out design the recommended option we are moving forward with.

## Recommendation: Replace traffic signal with stop signs on Lyon St



### Benefits

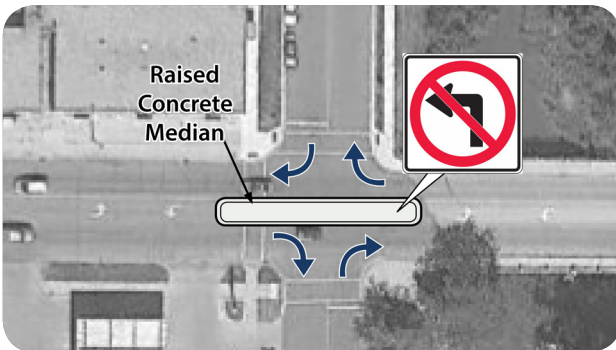
- » Improves traffic flow through Lyon Street and Main Street intersections
- » Makes it easier to get across town



### Moving forward:

Given the traffic benefits along with support from community members, we are moving forward with the recommendation to replace the traffic signal with stop signs on Lyon Street.

## Recommendation: Change intersection to right-in/right-out



### Benefits

- » Makes it easier to get across town
- » Improves safety
- » Address how difficult it is to see over the bridge railing when making a left turn onto College Dr



### Moving forward:

Given the safety benefits and support from community members, we are moving forward with the recommendation of a right-in/right-out design.



### Next steps

These intersections will be included in the project layout currently being developed. Community members will be asked for further input on the layout.



### Stay updated

Send an email to the project team at:  
[gene.east@state.mn.us](mailto:gene.east@state.mn.us)

and

Sign up to receive project emails at:

[mndot.gov/d8/projects/hwy19marshall](https://mndot.gov/d8/projects/hwy19marshall)