

INTRODUCING

Midco SmartHOME™

Monitoring | Home Automation | Energy Management

1.800.888.1300
MidcoSmartHOME.com


Midcontinent
COMMUNICATIONS

VERTICAL UPRIGHT SPACING TABLE: SEE DD-145274 FOR APPLICABLE DESIGN CODE

IF UPRIGHT SPACINGS FALL OUTSIDE LISTED RANGE CONTACT DAKTRONICS ENGINEERING

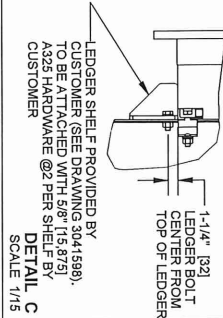
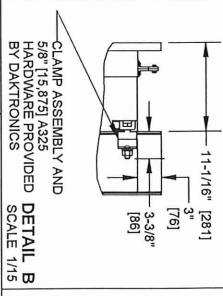
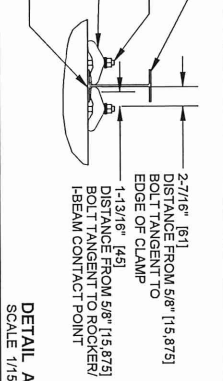
ASD DESIGN WIND PRESSURE "psf"	72 PSF [3,447 KPa]	87 PSF [4,032 KPa]	103 PSF [4,932 KPa]	122 PSF [5,841 KPa]
MAX UPRIGHT SPACING 'ft'	12'-2" [3693]	11'-0" [3353]	10'-0" [3048]	9'-0" [2799]
MAX GABLE ENDER SPACING 'ft'	6'-0" [1829]	5'-0" [1524]	5'-0" [1524]	4'-0" [1219]
MINIMUM REQUIRED # OF UPRIGHTS	2	2	3	3
MAX OUTSIDE UPRIGHT SPACING 'ft'	16'-3" [4953]			

STRUCTURAL COLUMNS MUST BE VERIFIED TO PROVIDE CORRECT NUMBER OF MOUNTING CLAMPS

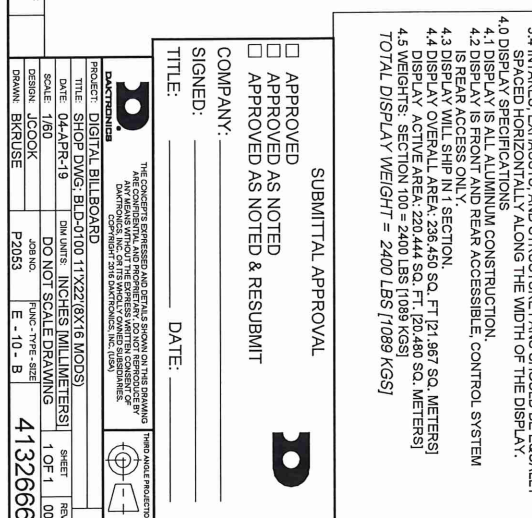
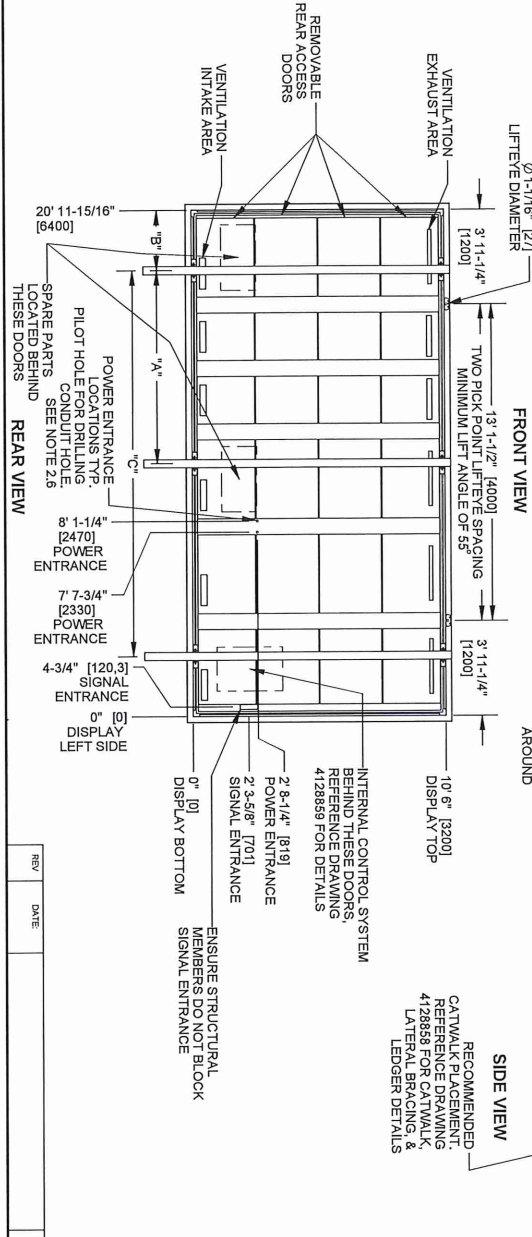
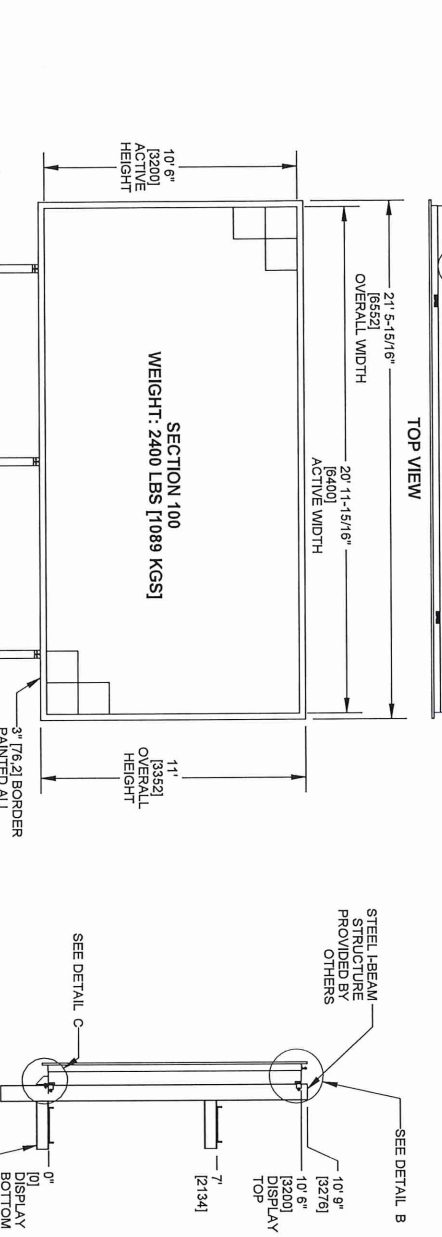
ALL 5/8" [15,875] A325 MOUNTING HARDWARE TO BE TIGHTENED TO 75 FT-LBS [10,371 KG-FM]. NOT TO EXCEED 100 FT-LBS [13,608 KG-FM].

CLAMPS MUST BE SLID ONTO I-BEAMS UNTIL ROCKERS CONTACT I-BEAM WEB OR BOLT CONTACTS CUTTER FLANGE OF I-BEAM TO ENSURE PROPER LOAD DISTRIBUTION

I-BEAM MUST BE IN CONTACT WITH DISPLAY WHEN CLAMPS ARE FULLY TIGHTENED



- NOTES:**
- 1.0 REFERENCE TO INSTALLATION AND MAINTENANCE
 - 1.1 REFER TO INSTALLATION AND MAINTENANCE INSTRUCTIONS
 - 1.2 REFER TO DAKTRONICS RISER DIAGRAM FOR ALL ELECTRICAL, POWER AND SIGNAL CONNECTIONS
 - 1.3 ALL DIMENSIONS ARE DUAL DIMENSIONED.
 - 2.0 PROJECT RESPONSIBILITY
 - 2.1 CUSTOMER IS RESPONSIBLE FOR DESIGNING AND CERTIFYING THE SUPPORT STRUCTURE.
 - 2.2 CUSTOMER IS RESPONSIBLE FOR OBTAINING LOCAL CERTIFICATION FOR THE STEEL MOUNTING STRUCTURE.
 - 2.3 CUSTOMER IS RESPONSIBLE FOR SUPPLYING EQUIPMENT FOR MOUNTING DISPLAYS.
 - 2.4 DAKTRONICS AND CUSTOMER ARE RESPONSIBLE FOR CONFIRMING THE STRUCTURAL UPRIGHT QUANTITY AND SIZE.
 - 2.5 DAKTRONICS IS RESPONSIBLE FOR PROVIDING STRUCTURAL CLAMPS OF THE CORRECT QUANTITY.
 - 2.5 DISPLAY TO BE SUPPORTED EVENLY ACROSS ALL LEDGERS. SUPPORTING LEDGERS SHOULD NOT EXCEED 1/16" [1,5875 MM] TOLERANCE ON THE ELEVATIONS. SHIMS SHALL BE USED TO FILL LEDGER GAPS TO ENSURE A DISTRIBUTED LOAD.
 - 2.6 INSTALLER/RELIEF TECHNICIAN IS RESPONSIBLE FOR DRILLING CONDUIT HOLES FOR POWER ENTRANCES ONLY AT THE DESIGNATED "H" HOLE.
 - 3.0 ENCLOSED STRUCTURE VENTILATION NOTES (WHERE APPLICABLE)
 - 3.1 OPEN AREA REQUIREMENTS FOR NATURAL CONVECTION: PER DISPLAY = 7,250 FT² [0,674 M²] EACH AT INTAKE AND AT EXHAUST.
 - 3.2 PER DISPLAY = 2175,000 CFM [61,553 CMH] WITH 7,250 FT² [0,674 M²] AT THE INTAKE.
 - 3.3 ACTIVE COOLING REQUIREMENTS IF OPTIONS #1 OR #2 CAN'T BE MET: CONTACT DAKTRONICS FOR ACTIVE COOLING REQUIREMENTS
 - 3.4 3 PAGES, EXHIBITS 1, AND STRUCTURE PLANS SHOULD BE EQUALLY REPRESENTED ALONG THE WIDTH OF THE DISPLAY.
 - 4.0 DISPLAY SPECIFICATIONS
 - 4.1 DISPLAY IS ALL ALUMINUM CONSTRUCTION.
 - 4.2 DISPLAY IS FRONT AND REAR ACCESSIBLE, CONTROL SYSTEM IS REAR ACCESS ONLY.
 - 4.3 DISPLAY WILL SHIP IN 1 SECTION.
 - 4.4 DISPLAY OVERALL AREA: 236,450 SQ. FT. [21,967 SQ. METERS]
 - 4.5 DISPLAY ACTIVE AREA: 220,444 SQ. FT. [20,480 SQ. METERS]
- TOTAL DISPLAY WEIGHT = 2400 LBS [1089 KGS]**



OVERALL DISPLAY	MAX HGT	MAX WIDE	SPACING
192	384	19MT	

REMOVABLE REAR ACCESS DOORS

VENTILATION EXHAUST AREA

VENTILATION INTAKE AREA

POWER ENTRANCE LOCATIONS TYP. LOCATIONS FOR DRILLING CONDUIT HOLE. SEE NOTE 2.6

SPARE PARTS LOCATED BEHIND THESE DOORS

8" 1-1/4" [2470] POWER ENTRANCE

7" 7-3/4" [2330] POWER ENTRANCE

4-3/4" [120.3] SIGNAL ENTRANCE

0" [0] DISPLAY LEFT SIDE

0" [0] DISPLAY BOTTOM

INTERNAL CONTROL SYSTEM BEHIND THESE DOORS. REFER TO REFERENCE DRAWING 4128859 FOR DETAILS

2 8-1/4" [819] POWER ENTRANCE

2 3-5/8" [701] SIGNAL ENTRANCE

ENSURE STRUCTURAL MEMBERS STRAIN SIGNAL ENTRANCE

RECOMMENDED CATWALK EQUIPMENT REFERENCE DRAWING 4128858 FOR CATWALK LATERAL BRACING & LEDGER DETAILS

STEEL I-BEAM STRUCTURE PROVIDED BY OTHERS

SEE DETAIL B

10' 6" [3200] DISPLAY TOP

10' 6" [3200] DISPLAY BOTTOM

7" [2134] DISPLAY TOP

0" [0] DISPLAY BOTTOM

SEE DETAIL C

10' 6" [3200] DISPLAY TOP

10' 6" [3200] DISPLAY BOTTOM

7" [2134] DISPLAY TOP

0" [0] DISPLAY BOTTOM

SEE DETAIL C

11'-11/16" [3611]

3"

7/8"

3-3/8"

1/8"

5/8" [15,875] A325 HARDWARE PROVIDED BY DAKTRONICS

1 1/4" [321]

LEADGER BOLT CENTER FROM TOP OF LEADGER

SCALE 1/15

SUBMITTAL APPROVAL

APPROVED

APPROVED AS NOTED

APPROVED AS NOTED & RESUBMIT

COMPANY: _____

SIGNED: _____

TITLE: _____

DATE: _____



THE CONCRETE SERVICE DESIGN AND DETAILING DIVISION OF THIS DRAWING HAS BEEN REVIEWED AND APPROVED BY THE PROFESSIONAL ENGINEER, AND ANY AMENDMENTS WITHOUT THE PROFESSIONAL ENGINEER'S CONSENT ARE VOID.

DAKTRONICS ENGINEERING
3000 WEST 15TH AVENUE, SUITE 200
DENVER, COLORADO 80202-3648

PROJECT: DIGITAL BILLBOARD

TITLE: SHOP DWG: BLD-0100 11'X22'(8X16 MODS)

SCALE: 1/80

DATE: 04-APR-19

DESIGN: JCOOK

DRAWN: BKRUSS

NO. 1

NO. 2

NO. 3

NO. 4

NO. 5

NO. 6

NO. 7

NO. 8

NO. 9

NO. 10

NO. 11

NO. 12

NO. 13

NO. 14

NO. 15

NO. 16

NO. 17

NO. 18

NO. 19

NO. 20

NO. 21

NO. 22

NO. 23

NO. 24

NO. 25

NO. 26

NO. 27

NO. 28

NO. 29

NO. 30

NO. 31

NO. 32

NO. 33

NO. 34

NO. 35

NO. 36

NO. 37

NO. 38

NO. 39

NO. 40

NO. 41

NO. 42

NO. 43

NO. 44

NO. 45

NO. 46

NO. 47

NO. 48

NO. 49

NO. 50

NO. 51

NO. 52

NO. 53

NO. 54

NO. 55

NO. 56

NO. 57

NO. 58

NO. 59

NO. 60

NO. 61

NO. 62

NO. 63

NO. 64

NO. 65

NO. 66

NO. 67

NO. 68

NO. 69

NO. 70

NO. 71

NO. 72

NO. 73

NO. 74

NO. 75

NO. 76

NO. 77

NO. 78

NO. 79

NO. 80

NO. 81

NO. 82

NO. 83

NO. 84

NO. 85

NO. 86

NO. 87

NO. 88

NO. 89

NO. 90

NO. 91

NO. 92

NO. 93

NO. 94

NO. 95

NO. 96

NO. 97

NO. 98

NO. 99

NO. 100

1 OF 1

00

4132666

PRELIMINARY TO BE DETERMINED

SIGN / SITE NOTES AND SPECIFICATIONS

GENERAL NOTES:
 1. REFER TO THE SIGN AND SPECIFICATIONS FOR ALL MATERIALS, FINISHES, AND DIMENSIONS.
 2. REFER TO THE SIGN AND SPECIFICATIONS FOR ALL MATERIALS, FINISHES, AND DIMENSIONS.
 3. REFER TO THE SIGN AND SPECIFICATIONS FOR ALL MATERIALS, FINISHES, AND DIMENSIONS.
 4. REFER TO THE SIGN AND SPECIFICATIONS FOR ALL MATERIALS, FINISHES, AND DIMENSIONS.
 5. REFER TO THE SIGN AND SPECIFICATIONS FOR ALL MATERIALS, FINISHES, AND DIMENSIONS.
 6. REFER TO THE SIGN AND SPECIFICATIONS FOR ALL MATERIALS, FINISHES, AND DIMENSIONS.
 7. REFER TO THE SIGN AND SPECIFICATIONS FOR ALL MATERIALS, FINISHES, AND DIMENSIONS.
 8. REFER TO THE SIGN AND SPECIFICATIONS FOR ALL MATERIALS, FINISHES, AND DIMENSIONS.
 9. REFER TO THE SIGN AND SPECIFICATIONS FOR ALL MATERIALS, FINISHES, AND DIMENSIONS.
 10. REFER TO THE SIGN AND SPECIFICATIONS FOR ALL MATERIALS, FINISHES, AND DIMENSIONS.

GENERAL NOTES AND SPECIFICATIONS

GENERAL NOTES AND SPECIFICATIONS:
 1. REFER TO THE SIGN AND SPECIFICATIONS FOR ALL MATERIALS, FINISHES, AND DIMENSIONS.
 2. REFER TO THE SIGN AND SPECIFICATIONS FOR ALL MATERIALS, FINISHES, AND DIMENSIONS.
 3. REFER TO THE SIGN AND SPECIFICATIONS FOR ALL MATERIALS, FINISHES, AND DIMENSIONS.
 4. REFER TO THE SIGN AND SPECIFICATIONS FOR ALL MATERIALS, FINISHES, AND DIMENSIONS.
 5. REFER TO THE SIGN AND SPECIFICATIONS FOR ALL MATERIALS, FINISHES, AND DIMENSIONS.
 6. REFER TO THE SIGN AND SPECIFICATIONS FOR ALL MATERIALS, FINISHES, AND DIMENSIONS.
 7. REFER TO THE SIGN AND SPECIFICATIONS FOR ALL MATERIALS, FINISHES, AND DIMENSIONS.
 8. REFER TO THE SIGN AND SPECIFICATIONS FOR ALL MATERIALS, FINISHES, AND DIMENSIONS.
 9. REFER TO THE SIGN AND SPECIFICATIONS FOR ALL MATERIALS, FINISHES, AND DIMENSIONS.
 10. REFER TO THE SIGN AND SPECIFICATIONS FOR ALL MATERIALS, FINISHES, AND DIMENSIONS.

FOR REVIEW ONLY: NOT FOR CONSTRUCTION

THIS PRINT IS THE PROPERTY OF PROFESSIONAL SIGN, VALID ONLY WHEN REPRODUCED BY THE ABOVE. IT IS PROVIDED FOR REVIEW PURPOSES ONLY. ANY OTHER USE OR REPRODUCTION IS PROHIBITED WITHOUT WRITTEN PERMISSION FROM PROFESSIONAL SIGN, 2160 GARDEN AVENUE, ST. LOUIS, MO 63105.
 2160 GARDEN AVENUE, ST. LOUIS, MO 63105

OWNER	AP SIGNS	DATE	03/15/2022
PROJECT	MARSHALL, MN	SCALE	1/8" = 1'
DESIGNER	PROFESSIONAL SIGN	DATE	03/15/2022
PROJECT	MARSHALL, MN	SCALE	1/8" = 1'
DESIGNER	PROFESSIONAL SIGN	DATE	03/15/2022
PROJECT	MARSHALL, MN	SCALE	1/8" = 1'

