

State Of Minnesota

City of Marshall, Minnesota

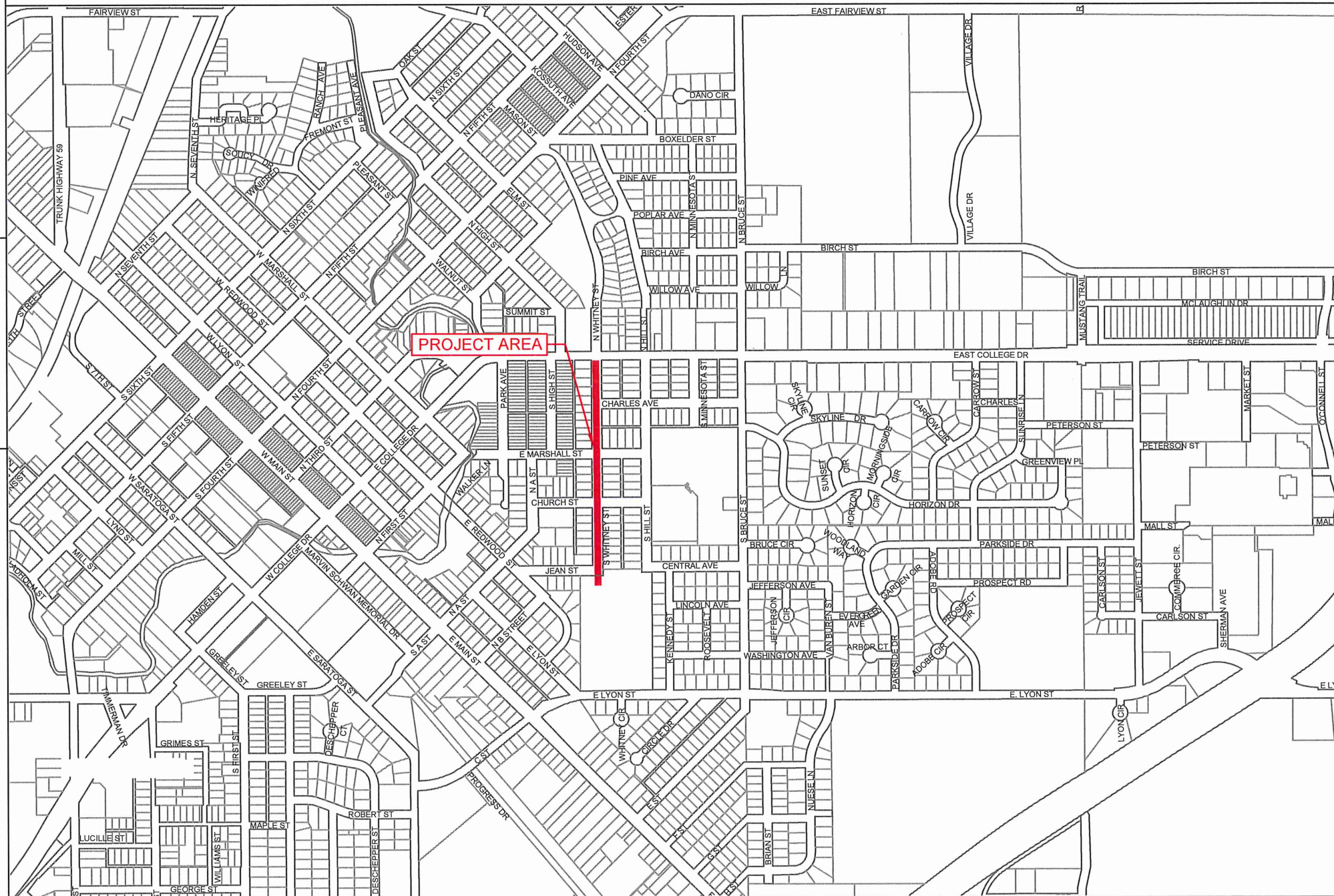
Project Number ST-012-2024

Construction Plans for Sanitary Sewer, Storm Sewer, Watermain, Curb and Gutter, Driveways, Sidewalk, Bituminous Surfacing, and Misc. Work for

South Whitney Street Reconstruction

Whitney Street from East College Drive to Jean Street

SECTION 4 T111N, R41W



LEGEND

ALIGNMENT STATIONS	—
GAS LINE	— GAS — GAS — GAS —
COMMUNICATION LINE	— COM — COM — COM —
FIBER LINE	— FB — FB — FB —
UNDERGROUND POWER	— UGP — UGP — UGP —
STREET LIGHT	⊕
EXISTING CATCH BASIN	□
EXISTING STORM MANHOLE	⊙
EXISTING SANITARY MANHOLE	⊙
EXISTING HYDRANT	⊕
EXISTING WATER VALVE	⊕
NEW CATCH BASIN	□
NEW HYDRANT	⊕
NEW WATER VALVE	⊕
NEW SANITARY MANHOLE	⊙
NEW STORM MANHOLE	⊙
BENCHMARK TOP NUT HYDRANT	⊕

SPECIFICATION REFERENCE

THE 2020 EDITION OF THE MINNESOTA DEPARTMENT OF TRANSPORTATION "STANDARD SPECIFICATIONS FOR CONSTRUCTION" AND THE "SUPPLEMENTAL SPECIFICATIONS" DATED SEPTEMBER 2022 SHALL GOVERN

ALL TRAFFIC CONTROL DEVICES SHALL CONFORM TO THE LATEST EDITION OF THE MINNESOTA MANUAL ON UNIFORM TRAFFIC CONTROL DEVICES, INCLUDING THE LATEST FIELD MANUAL FOR TEMPORARY TRAFFIC CONTROL ZONE LAYOUTS.

THE CITY OF MARSHALL STANDARD SPECIFICATIONS AND SPECIAL PROVISIONS.

PROJECT LENGTH

GROSS LENGTH WHITNEY ST.	1577	FEET	0.30	MILES
EXCEPTIONS	0	FEET	0.0	MILES
TOTAL	1577	FEET	0.30	MILES

DESIGN DATA

DESIGN SPEED 30 MPH
STOPPING SIGHT DISTANCE BASED ON
3.5' HEIGHT OF EYE
0.5' HEIGHT OF OBJECT

SCALES

PLAN	1"=40'
PROFILE	1"=5'
INDEX MAP	1"=100'
GENERAL LAYOUT	1"=40'

INDEX

SHEET NO.	DESCRIPTION
1	Title Sheet
2	Estimated Quantity Sheet
3	Construction Notes/Detail Sheet
4-6	Quantity Tables Sheet
7	Typical Section Sheets
8-9	Misc. Detail Sheets
10-11	SWPPP
12	Traffic Control
13-15	Removal Sheets
16-18	Plan & Profile Sheets
19	Catch Basin Details
20-21	Cross Sections
22	Pedestrian Ramp Plan
23-28	Pedestrian Curb Ramp Details
29-32	Driveway & Sidewalk Details


I HEREBY CERTIFY THAT THIS PLAN WAS PREPARED BY ME OR UNDER MY DIRECT SUPERVISION AND THAT I AM A DULY LICENSE PROFESSIONAL ENGINEER UNDER THE LAWS OF THE STATE OF MINNESOTA.

APPROVED: CITY ENGINEER, MARSHALL MINNESOTA DATE REG NO 53322

APPROVED: MARSHALL MUNICIPAL UTILITIES DATE

DESIGNED BY: GJS
DRAWN BY: GJS
APPROVED BY: JRA
SCALE: 1:50

DATE	REVISIONS	INIT.

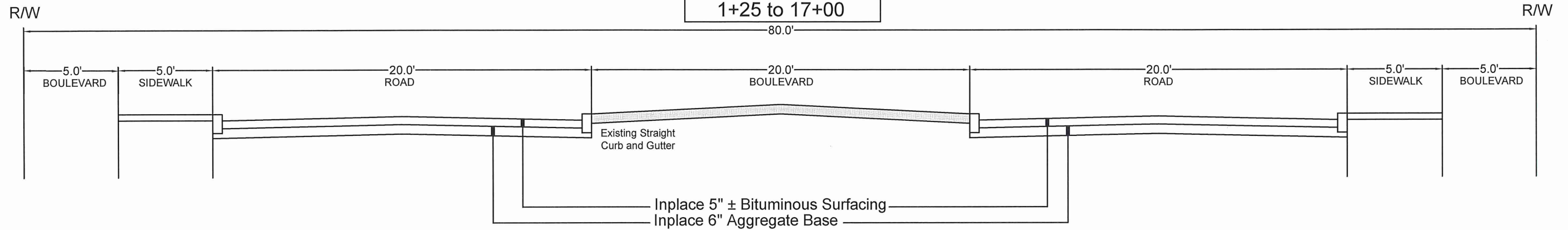

MARSHALL
 ENGINEERING DEPARTMENT
 344 WEST MAIN STREET
 MARSHALL, MINNESOTA
 56258

SOUTH WHITNEY RECONSTRUCTION
TITLE SHEET

CITY PROJECT NO. ST-012	DATE 10/5/2023
STATE AID PROJECT NO.	SHEET NO. 1 OF 32

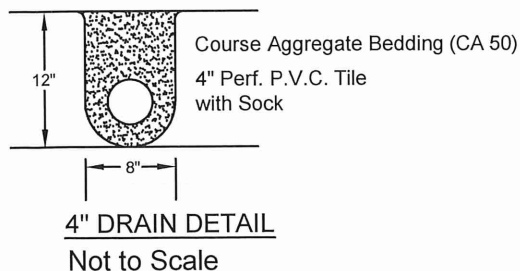
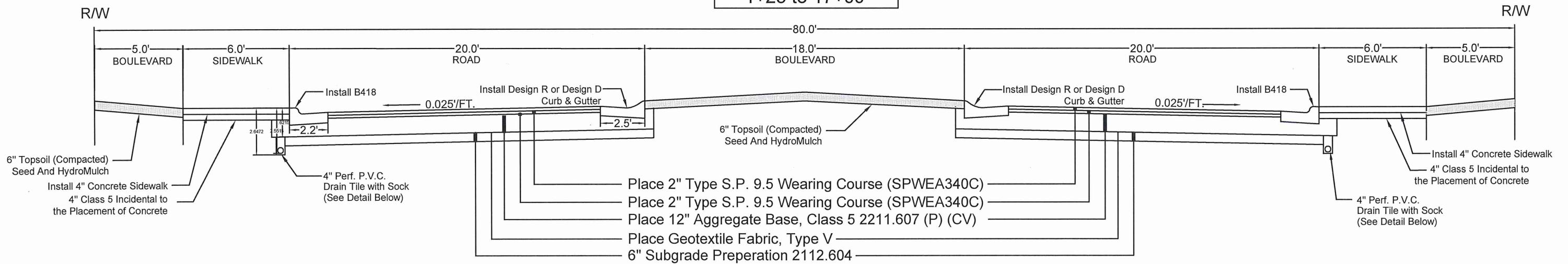
Existing Typical Section

South Whitney Street
1+25 to 17+00




Proposed Typical Section

South Whitney Street
1+25 to 17+00



DESIGNED BY: GJS
DRAWN BY: GJS
APPROVED BY: JRA
SCALE: NA

DATE	REVISIONS	INIT.

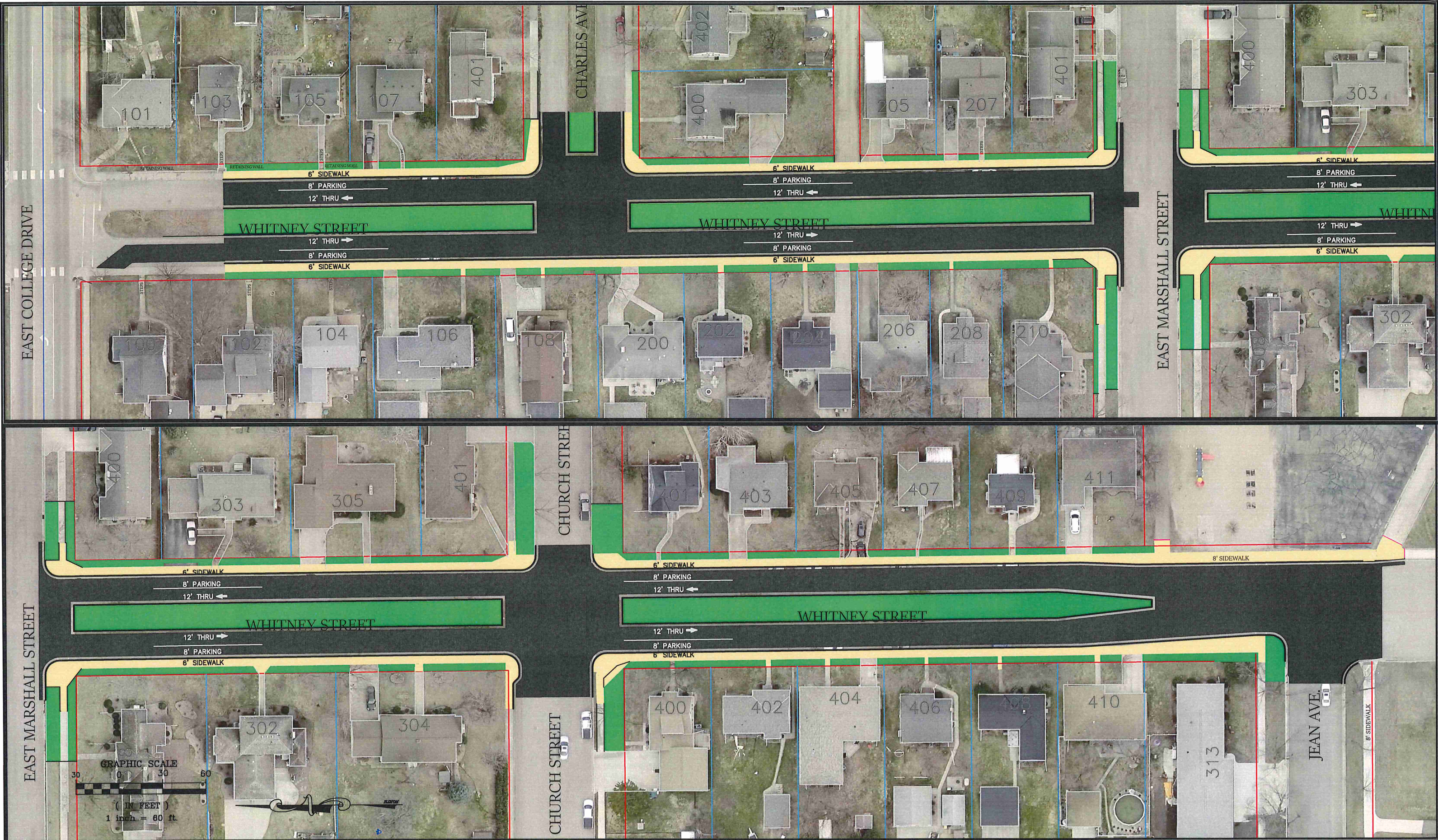


ENGINEERING DEPARTMENT
344 WEST MAIN STREET
MARSHALL, MINNESOTA
56258

SOUTH WHITNEY RECONSTRUCTION
EXISTING & PROPOSED TYPICAL SECTIONS

I HEREBY CERTIFY THAT THIS PLAN, SPECIFICATION OR REPORT WAS PREPARED BY ME OR UNDER MY DIRECT SUPERVISION AND THAT I AM A DULY LICENSED ENGINEER UNDER THE LAWS OF THE STATE OF MINNESOTA.
DATE: _____ LICENSE NO. 53322

CITY PROJECT NO. ST-012 DATE 10/06/2023
STATE AID PROJECT NO. NA SHEET NO. 7 OF 32



DESIGNED BY: _____	DATE	REVISIONS	INIT.
DRAWN BY: G.J.S.			
APPROVED BY: J.R.A.			
SCALE: 1"=50'			


ENGINEERING DEPARTMENT
 344 WEST MAIN STREET
 MARSHALL, MINNESOTA
 56258
MARSHALL

WHITNEY STREET
 PROJECT AREA SHEET

I HEREBY CERTIFY THAT THIS PLAN, SPECIFICATION OR REPORT WAS PREPARED BY ME OR UNDER MY DIRECT SUPERVISION AND THAT I AM A DULY LICENSED ENGINEER UNDER THE LAWS OF THE STATE OF MINNESOTA.
 DATE _____ LICENSE NO. 53322

CITY PROJECT NO. ST-012	DATE 01/18/2024
STATE AID PROJECT NO. NA	SHEET NO. 10F1