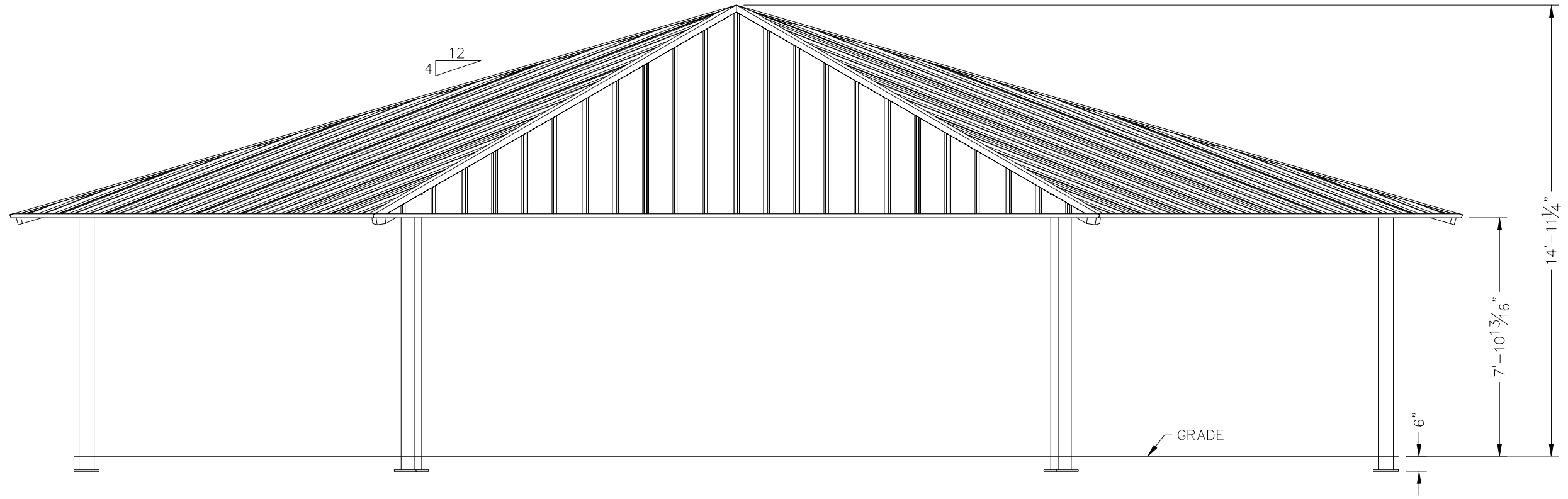


PRELIMINARY: NOT FOR
CONSTRUCTION

ICON
Shelter Systems Inc
DISTINCTIVE STEEL SHELTERS
WWW.ICONSHelters.COM
COPYRIGHT 2004, ICON SHELTER
SYSTEMS, INC.
1455 LINCOLN AVE.
HOLLAND MI. 49423
616.396.0919
800.748.0985
616.396.0944 FX

Elevation



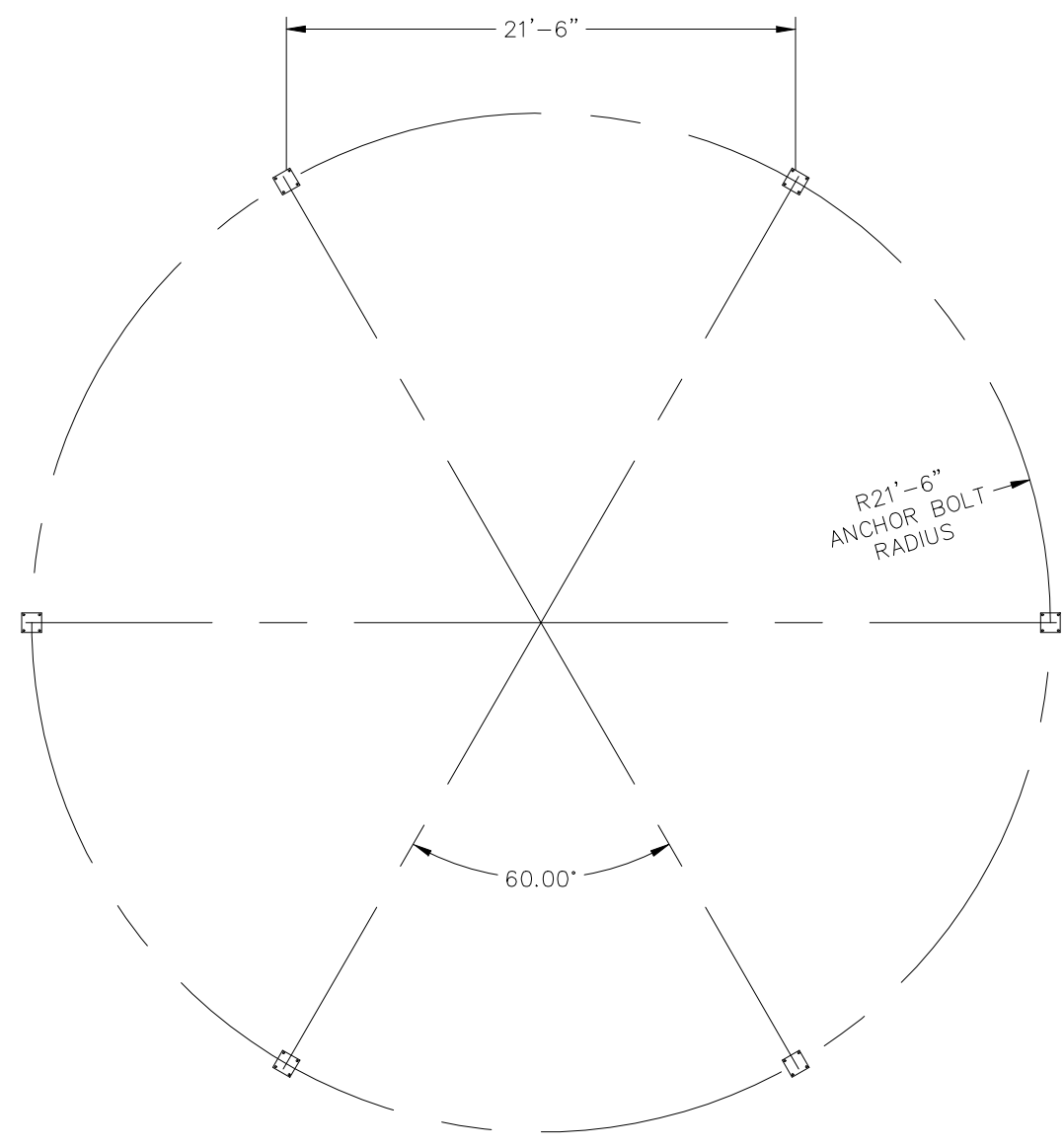
DRAWN BY:	RGB
DATE:	2/22/2023
PRELIMINARY ID:	78435
REVISION:	A
BUILDING TYPE:	HX48M-P4
PROJECT NAME:	

SHEET
1.0

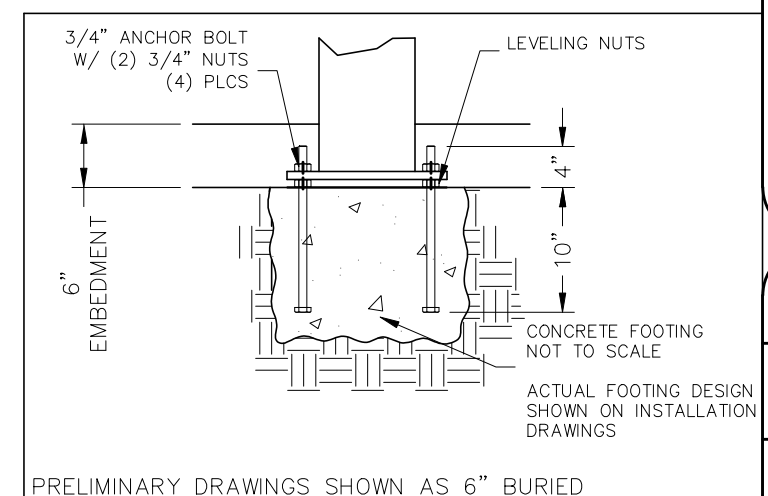
DWG:ineering\Standards\Shelters\HX\48\M-P4-43-105-30\Drawings\Preliminary\HX48M-P4-43-105-30~78435.dwg

PRELIMINARY: NOT FOR CONSTRUCTION

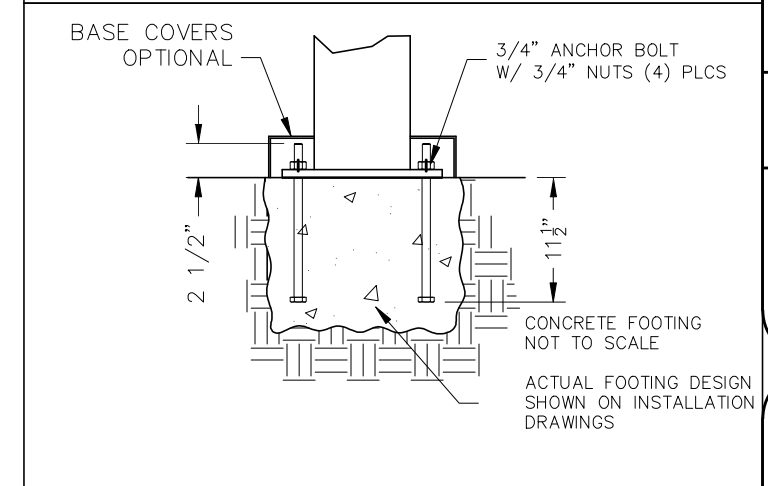
ICON
 Shelter Systems Inc
 DISTINCTIVE STEEL SHELTERS
 WWW.ICONSHelters.COM
 COPYRIGHT 2004, ICON SHELTER SYSTEMS, INC.
 1455 LINCOLN AVE.
 HOLLAND MI. 49423
 616.396.0919
 800.748.0985
 616.396.0944 FX



Anchor Bolt Layout



STANDARD BASE CONNECTION
 COLUMN TYPE: A (6" BURIED)



OPTIONAL BASE CONNECTION
 COLUMN TYPE: B (SURFACE MOUNT W/ COVERS)

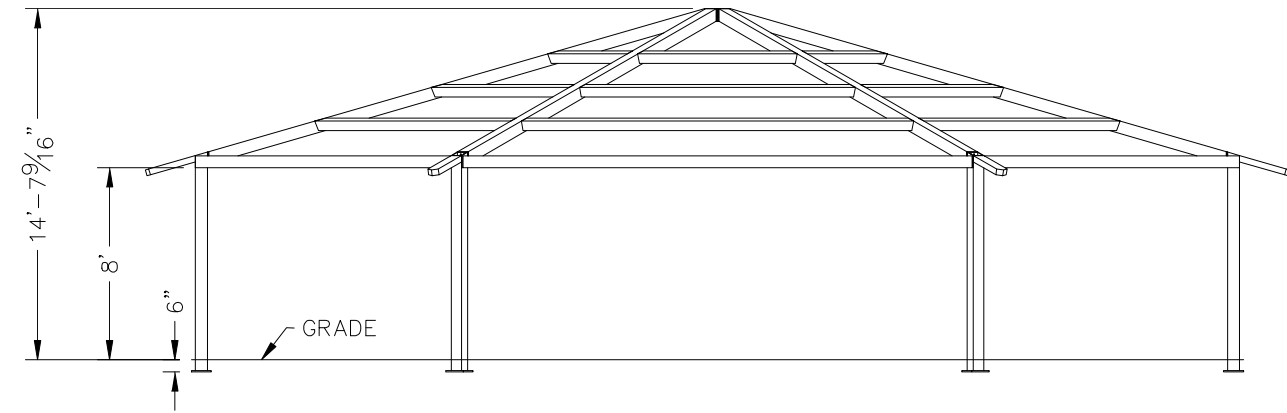
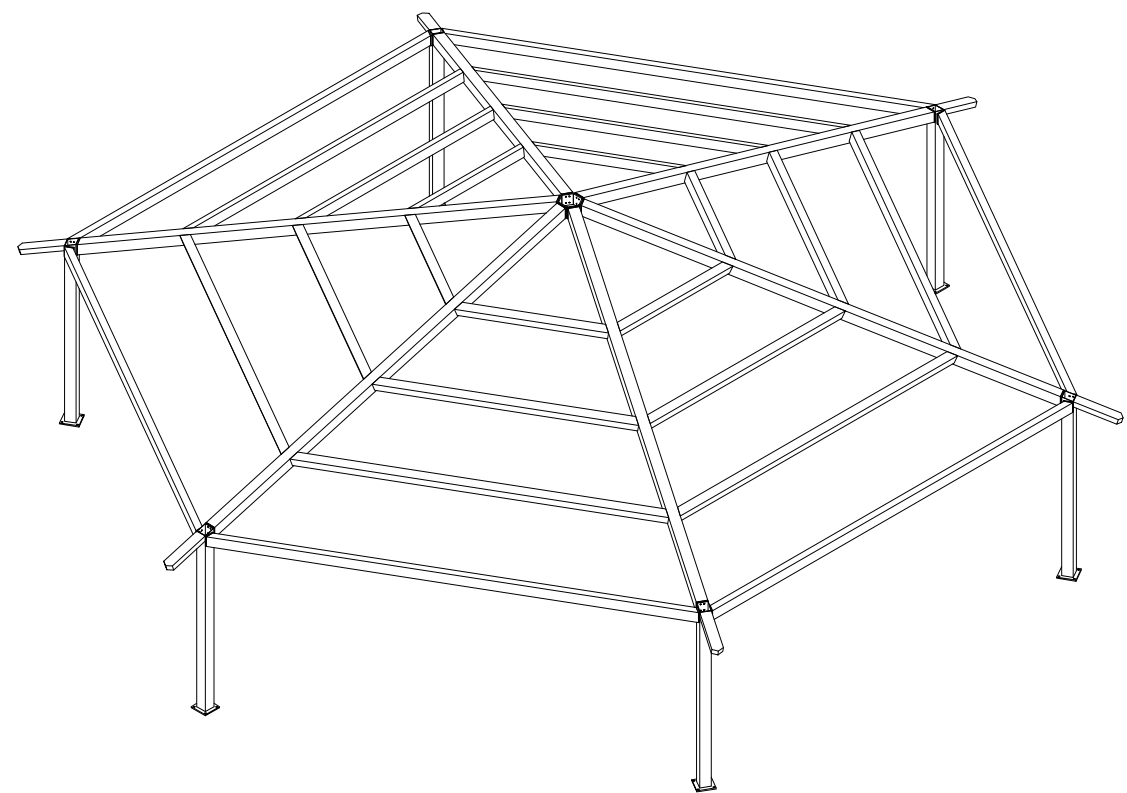
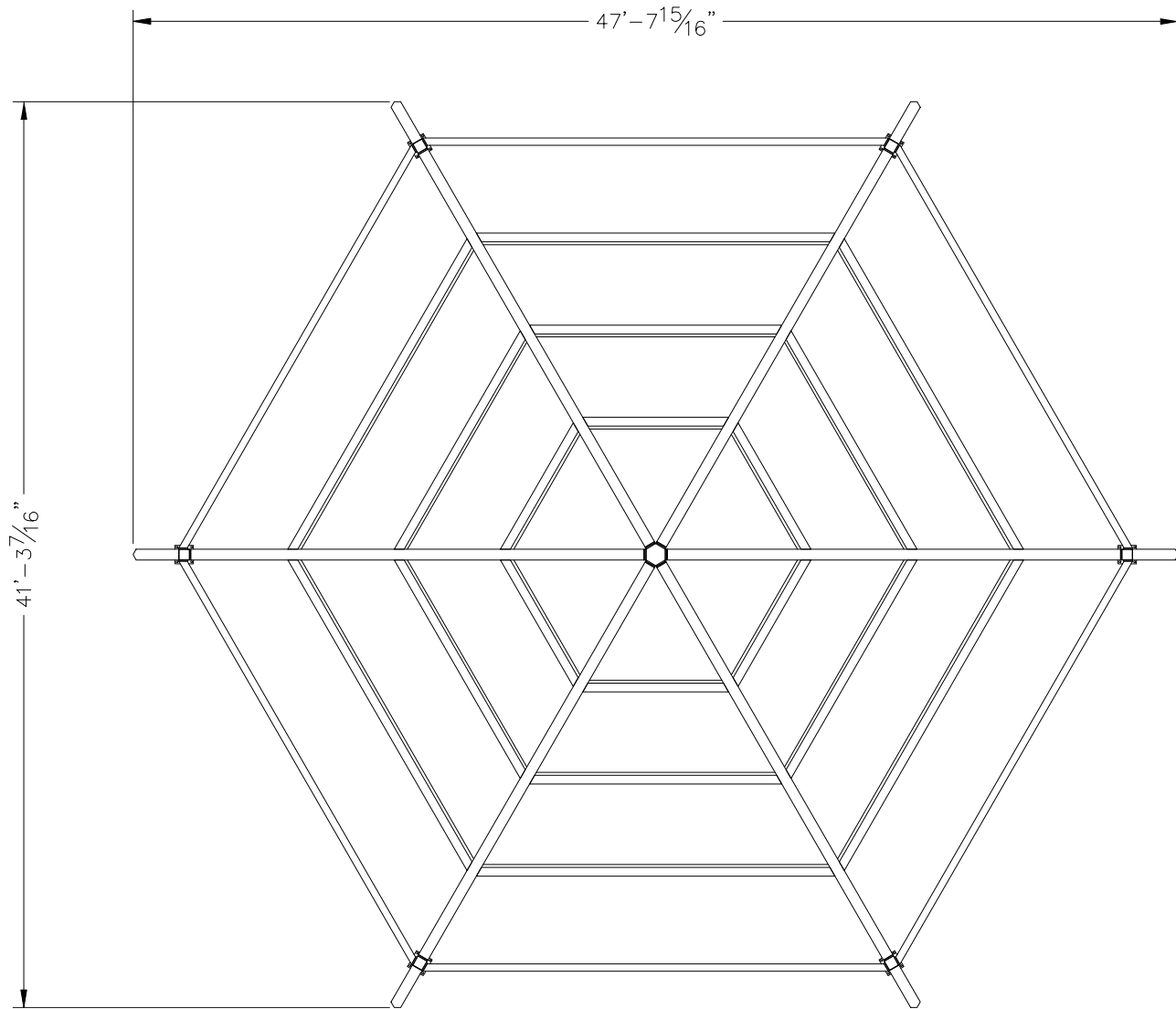
DRAWN BY:	RGB
DATE:	2/22/2023
PRELIMINARY ID:	78435
REVISION:	A
BUILDING TYPE:	HX48M-P4
PROJECT NAME:	

SHEET
 2.0

DWG:ineering\Standards\Shelters\HX\48\M-P4-43-105-30\Drawings\Preliminary\HX48M-P4-43-105-30~78435.dwg

PRELIMINARY: NOT FOR CONSTRUCTION

ICON
 Shelter Systems Inc
 DISTINCTIVE STEEL SHELTERS
 WWW.ICONSHELTERS.COM
 COPYRIGHT 2004, ICON SHELTER SYSTEMS, INC.
 1455 LINCOLN AVE.
 HOLLAND MI. 49423
 616.396.0919
 800.748.0985
 616.396.0944 FX



Frame

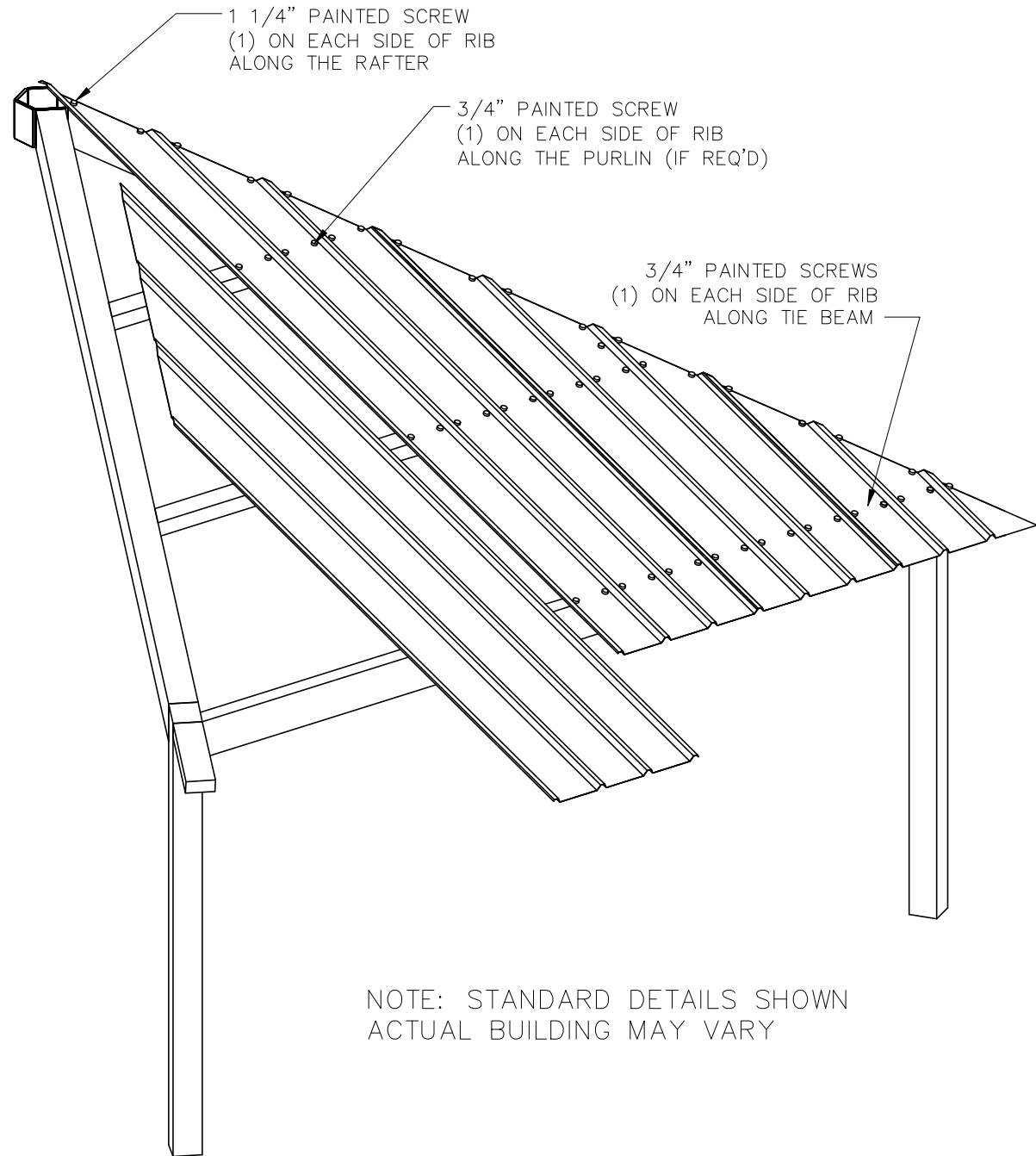
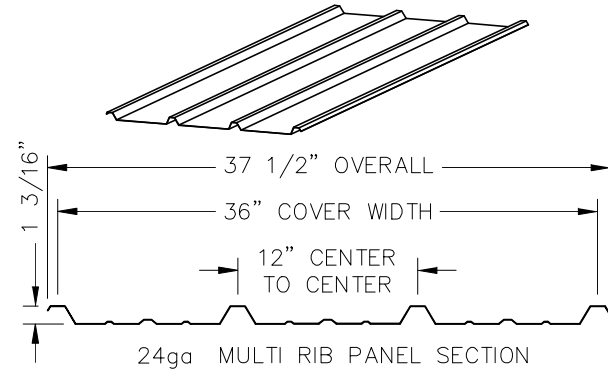
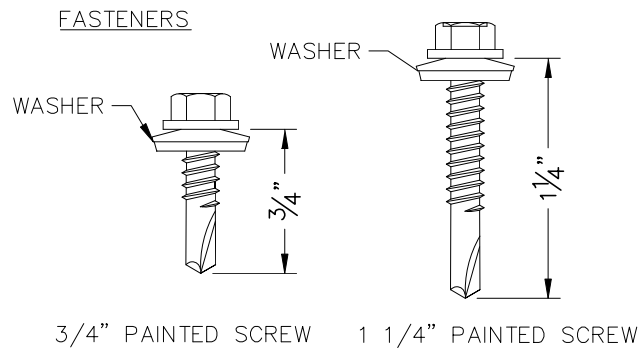
DRAWN BY:	RGB
DATE:	2/22/2023
PRELIMINARY ID:	78435
REVISION:	A
BUILDING TYPE:	HX48M-P4
PROJECT NAME:	

ALL STRUCTURAL COMPONENTS WILL BE:
 TUBE: ASTM A500 GRADE B
 PLATE: ASTM A36
 BOLTS: ASTM A325
 NUTS: ASTM A563
 WELDING: GMAW

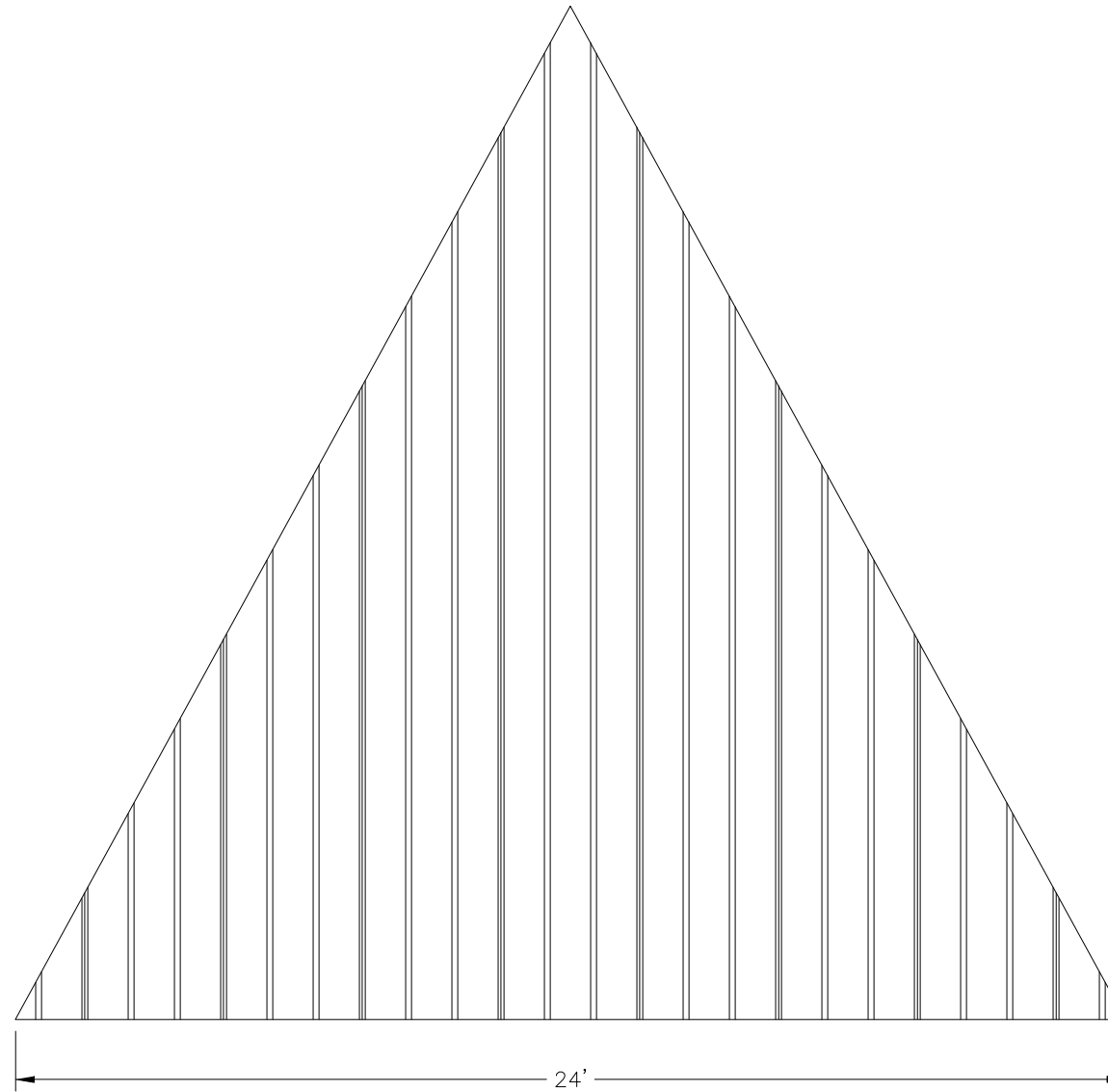
NOTE:
 COLUMN SIZE: HSS 6x6x3/16

SHEET
 3.0

DWG:ineering\Standards\Shelters\HX\48\M-P4-43-105-30\Drawings\Preliminary\HX48M-P4-43-105-30~78435.dwg



NOTE: STANDARD DETAILS SHOWN
ACTUAL BUILDING MAY VARY



PRELIMINARY: NOT FOR
CONSTRUCTION

ICON
Shelter Systems Inc
DISTINCTIVE STEEL SHELTERS
WWW.ICONSHelters.COM
COPYRIGHT 2004, ICON SHELTER
SYSTEMS, INC.
1455 LINCOLN AVE.
HOLLAND MI. 49423
616.396.0919
800.748.0985
616.396.0944 FX

Roof Layout

DRAWN BY:	RGB
DATE:	2/22/2023
PRELIMINARY ID:	78435
REVISION:	A
BUILDING TYPE:	HX48M-P4
PROJECT NAME:	

ELECTRICAL INFORMATION - HEXAGON

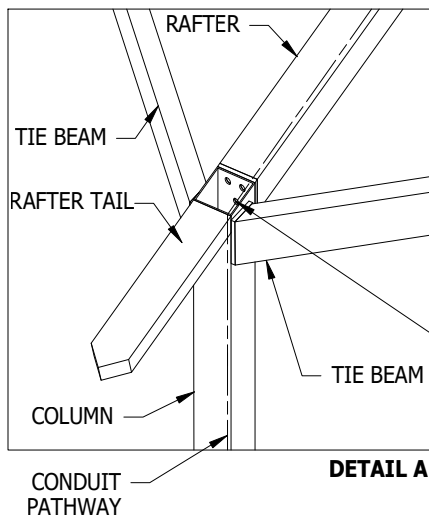
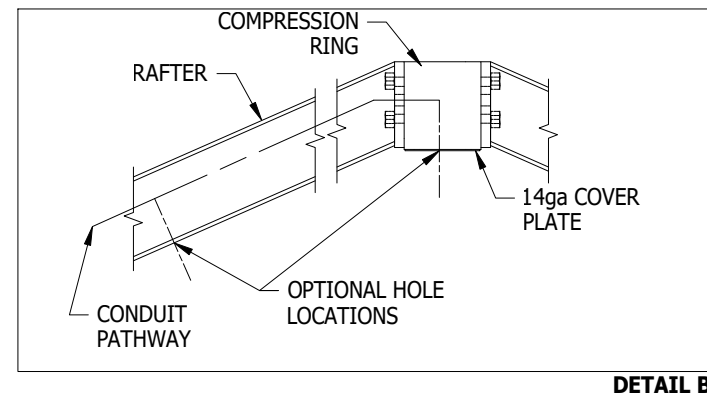
ICON'S STANDARD ELECTRICAL IS DESIGNED TO ACCOMMODATE $\varnothing 1/2"$ CONDUIT WITH A $\varnothing 3"$ INLET HOLE ON THE BOTTOM OF EACH COLUMN. THE CONDUIT PATHWAY RUNS THROUGH THE COLUMN, RAFTER, AND RIDGE BEAM THROUGH ALL BOLTED CONNECTIONS AS SHOWN. IF YOU HAVE SPECIAL ELECTRICAL REQUIREMENTS, PLEASE OUTLINE ANY CHANGES BELOW AS DESCRIBED.

PLEASE NOTE: DESIGN LIMITATIONS ON HOLE/CUTOUT SIZES MAY APPLY. ICON WILL REACH OUT TO DISCUSS ANY SUCH LIMITATIONS AS NEEDED.

NOTE: ICON SHELTER FRAME IS NOT UL LISTED TO ACT AS A CONDUIT FOR ELECTRICAL WIRING. CONSULT LOCAL BUILDING CODES WHEN PLANNING YOUR ELECTRICAL SYSTEM.

OPTIONAL EXIT HOLES

IF REQUIRED, EXIT HOLES FOR LIGHTING, ETC. CAN BE PLACED IN THE RAFTER AND/OR COMPRESSION RING WITH 14ga COVER PLATE AS SHOWN (CHARGES APPLY) USE FRAME SHEET OF THIS PRELIMINARY TO SPECIFY REQUIRED EXIT HOLE LOCATIONS AND SIZE.

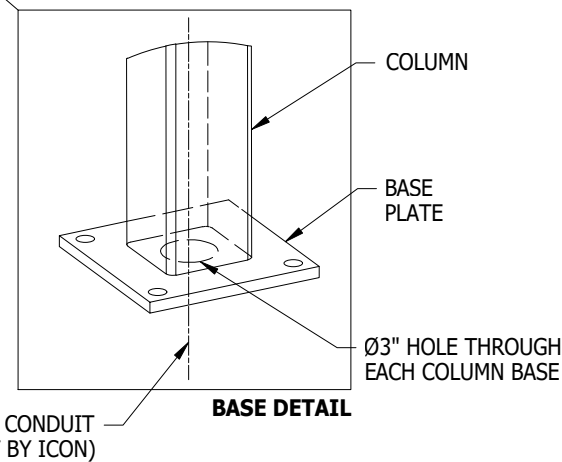
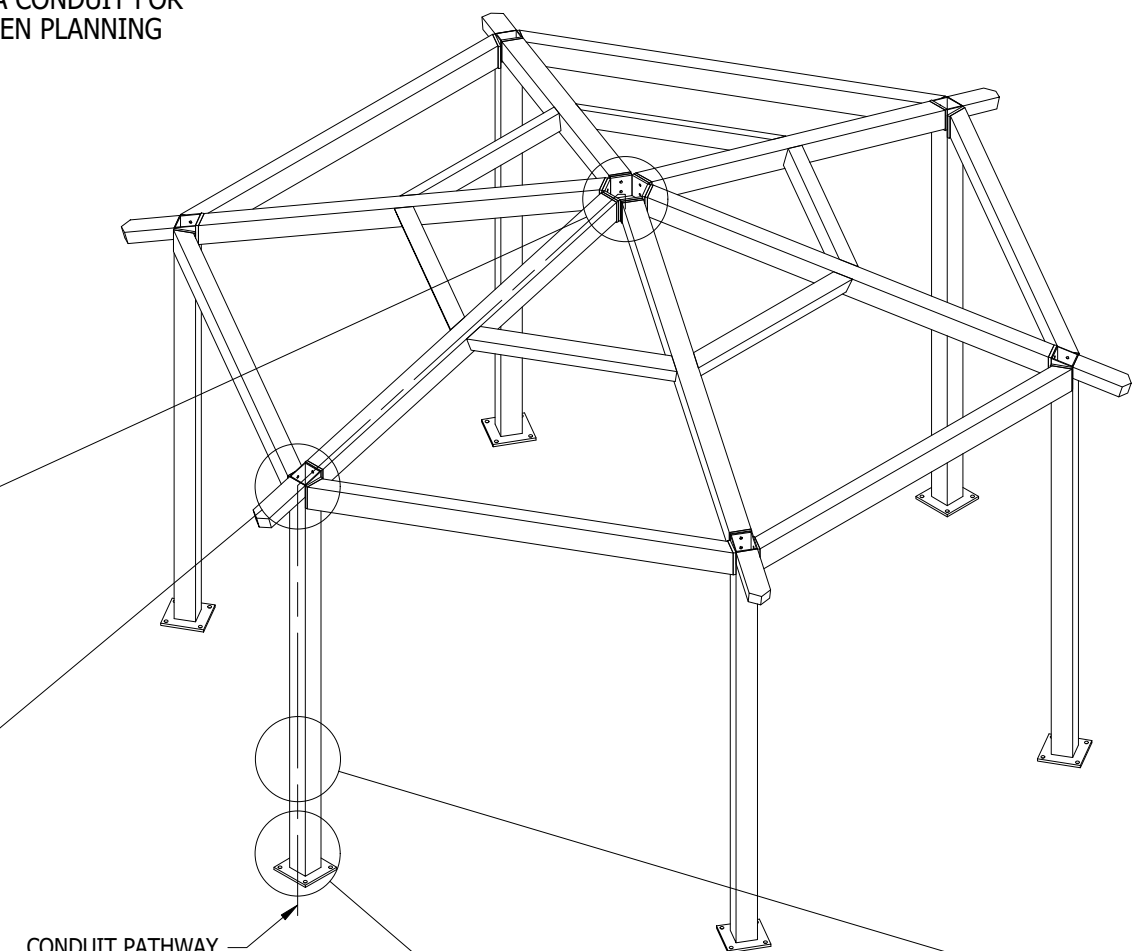


ICON PROVIDES A MINIMUM OF (1) $3/4"$ HOLE AT EACH CONNECTION FOR $1/2"$ CONDUIT. IF APPLICABLE, PLEASE SPECIFY REQUIRED CONDUIT SIZE: (CHARGES APPLY)

- $3/4"$ CONDUIT (1" HOLES)
- 1" CONDUIT (1 $1/4"$ HOLES)
- OTHER (PLEASE SPECIFY)

NOTE: BUILDING DEPICTED ON THIS SHEET FOR ILLUSTRATION PURPOSES ONLY. ACTUAL LAYOUT AND FRAME MEMBER QUANTITIES VARY BY DESIGN. PLEASE REFER TO ELEVATION AND FRAME SHEETS IN THIS PRELIMINARY FOR ORDER-SPECIFIC CONFIGURATION.

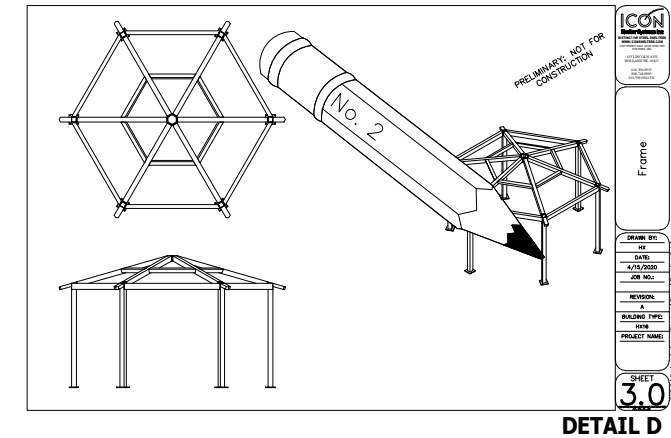
PRELIMINARY: NOT FOR CONSTRUCTION



STEPS:

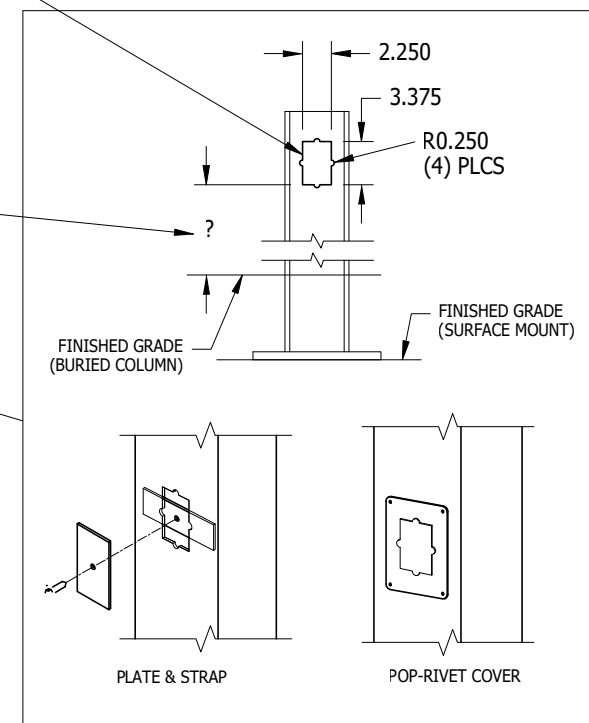
1. CONDUIT HOLE SIZE (DETAIL A)
2. ELECTRICAL EXIT HOLES (DETAIL B)
3. ELECTRICAL ACCESS & COVER PLATES (DETAIL C)
4. ELECTRICAL CONDUIT PATHWAY (DETAIL D)

IF REQUIRED, PLEASE DRAW THE NECESSARY ELECTRICAL CONDUIT PATHWAY ON THE FRAME SHEET OF THIS PRELIMINARY.



- (1) STANDARD CUTOUT SIZE SHOWN. SPECIFY IF OTHER SIZE REQUIRED.
- (2) CUTOUTS WILL BE ON INSIDE FACE OF COLUMN UNLESS OTHERWISE INDICATED ON FRAME SHEET.
- (3) SPECIFY HEIGHT ABOVE FINISHED GRADE FOR EACH CUTOUT AS SHOWN

OPTIONAL CUTOUTS
USE FRAME SHEET OF THIS PRELIMINARY TO SPECIFY REQUIRED CUTOUT LOCATIONS (CHARGES APPLY) SEE REQUIRED INFO BELOW



- (4) COVER PLATES PROVIDED UPON REQUEST (CHARGES APPLY) PLEASE SPECIFY TYPE AND QUANTITY REQUIRED:
- PLATE & STRAP
 - POP-RIVET COVER PLATE
- HOW MANY REQUIRED? _____

ICON
Shelter Systems Inc
DISTINCTIVE STEEL SHELTERS
WWW.ICONSHelters.COM
COPYRIGHT 2004, ICON SHELTER SYSTEMS, INC.
1455 LINCOLN AVE.
HOLLAND MI, 49423
616.396.0919
800.748.0985
616.396.0944 FX

Electrical

DRAWN BY: RGB
DATE: 2/22/2023
PRELIMINARY ID: 78435
REVISION: A
BUILDING TYPE: HX48M-P4
PROJECT NAME:

SHEET 5.0

DWG:ineering\Standards\Shelters\HX\48\M-P4-43-105-30\Drawings\Preliminary\HX48M-P4-43-105-30~78435.dwg