

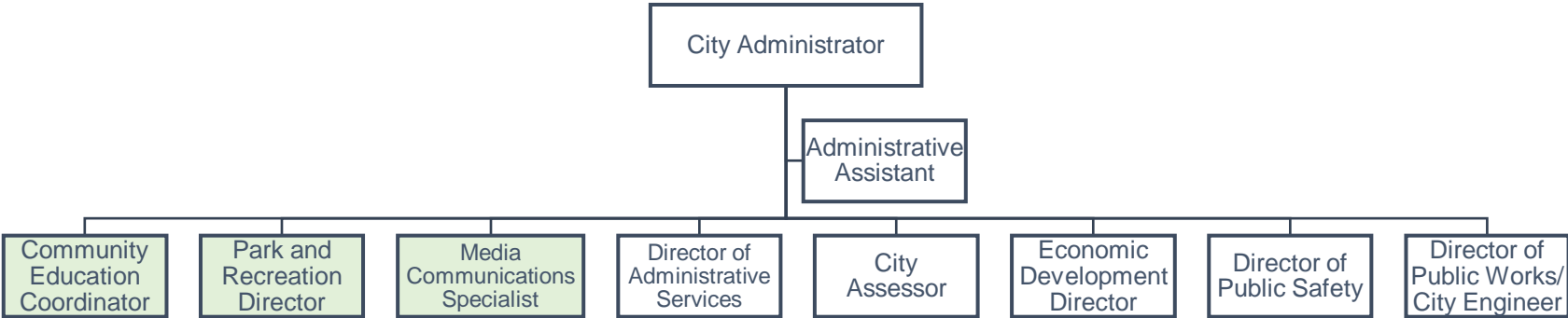
Organization Chart—Reporting to the City Administrator

Current structure



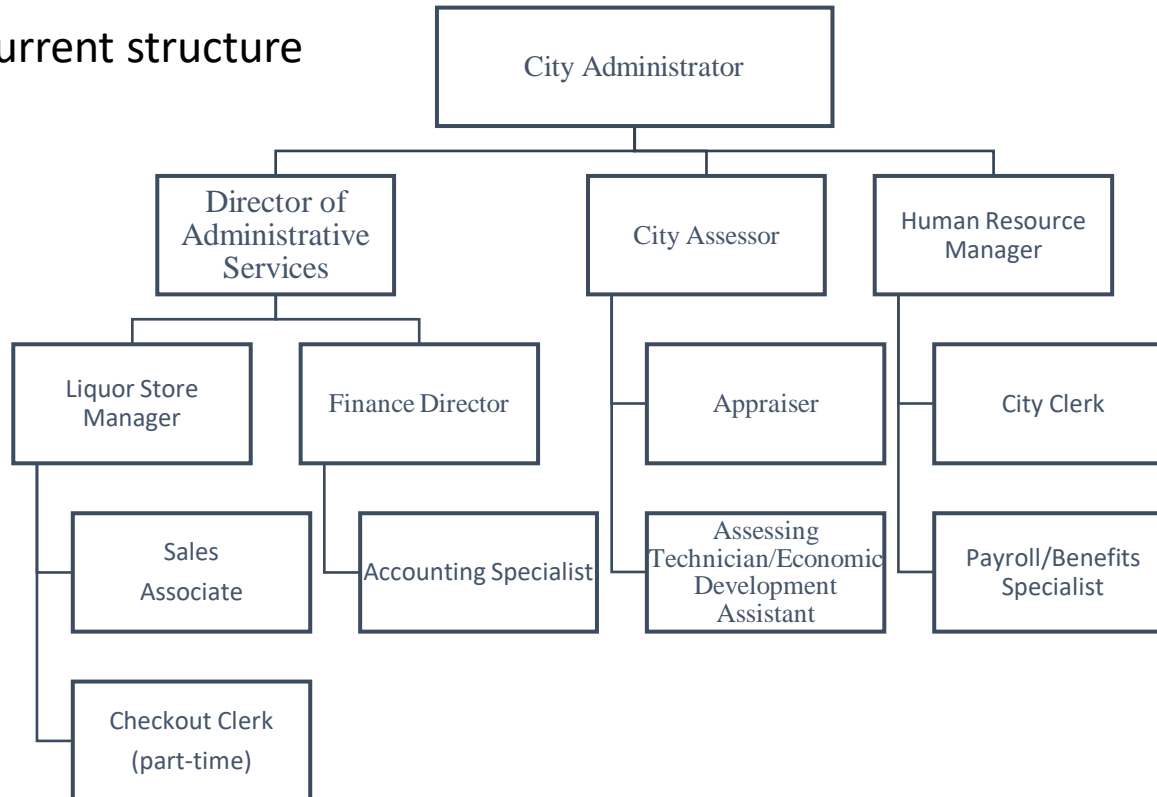
Organization Chart—Reporting to the City Administrator

Proposed structure



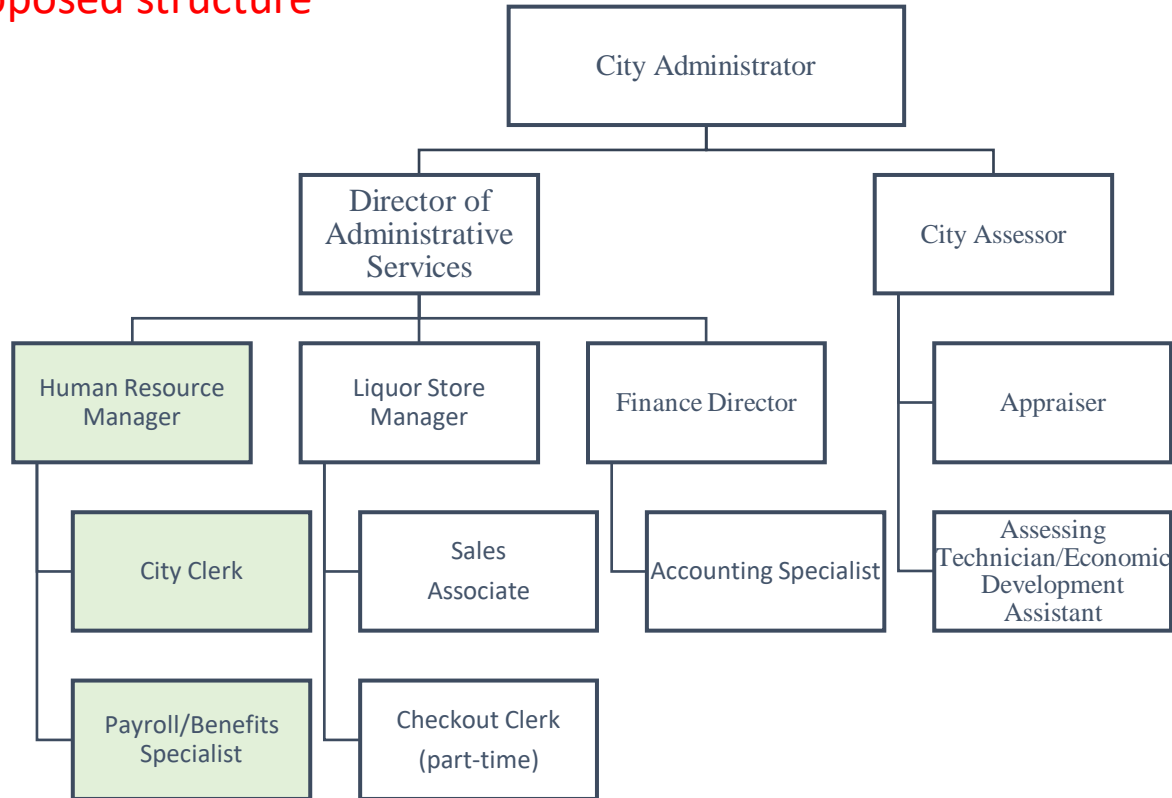
Organization Chart—ADMINISTRATION

Current structure



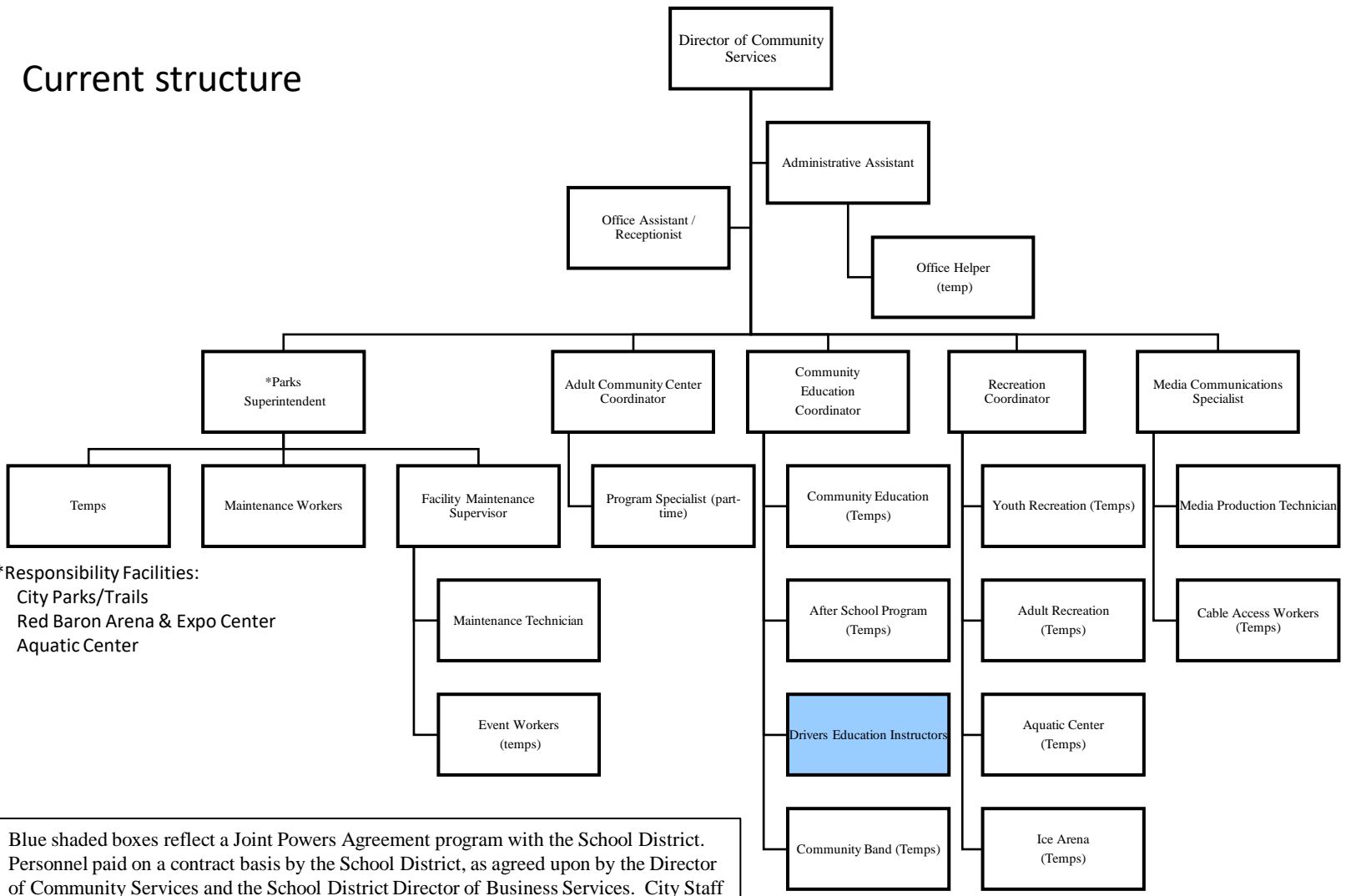
Organization Chart—ADMINISTRATION

Proposed structure



Organization Chart—COMMUNITY SERVICES

Current structure



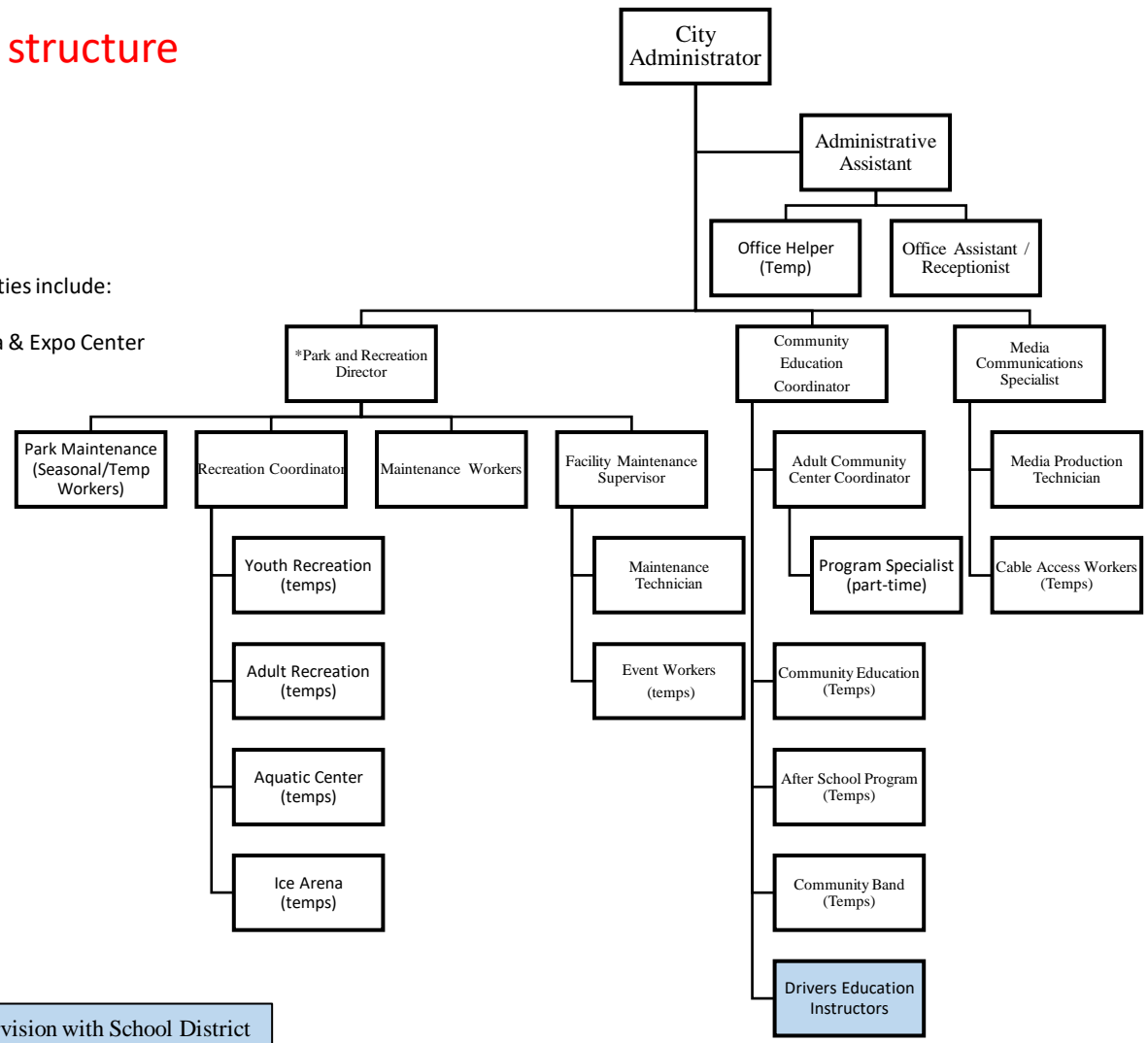
*Responsibility Facilities:
 City Parks/Trails
 Red Baron Arena & Expo Center
 Aquatic Center

Blue shaded boxes reflect a Joint Powers Agreement program with the School District. Personnel paid on a contract basis by the School District, as agreed upon by the Director of Community Services and the School District Director of Business Services. City Staff provide supervision. Personnel reporting to the Director of Community Services also report directly to the School District Director of Business Services.

Organization Chart—COMMUNITY SERVICES

Proposed structure

*Responsible Facilities include:
 City Parks/Trails
 Red Baron Arena & Expo Center
 Aquatic Center



Denotes shared supervision with School District