



January 30, 2026

RE: Proposal for Design Architecture and Engineering Services for  
City of Marshall Bandshell  
Office of the City Clerk, City Hall  
City of Marshall  
344 West Main Street  
Marshall, MN 56258

Dear Selection Committee,

Koch Hazard Architects is pleased to submit this proposal to provide design, architectural, and engineering services for the replacement of the Marshall Bandshell at Liberty Park. We appreciate the opportunity to partner with the City of Marshall on a project that represents far more than a structure - it is a beloved community amenity, a point of civic pride, and a lasting investment in the cultural life of the city.

The Marshall Bandshell has long served as a gathering place for residents and visitors alike. Re-imagined, it has the potential to become a powerful representation of Marshall in every season - from vibrant summer evenings to sub-zero January days - while maintaining the high standard of quality the City has demonstrated through its recent public improvements. Our team is deeply aligned with the City's goal of creating a forward-looking facility that is inclusive, accessible, and welcoming to all members of the community.

Koch Hazard Architects brings extensive experience designing performance environments across a wide range of indoor and outdoor venues, including the rehabilitation and replacement of existing structures. We are particularly familiar with the acoustic demands of performance spaces and the balance required between architectural expression and sound performance. For this project, we look forward to collaborating closely with specialized acoustical consultant and partner, Kvernstoen, Rönholm & Associates (KRA), to ensure the bandshell supports clear, balanced sound while accounting for weather, technology, and operational flexibility - allowing the architecture itself to remain the focus.

We believe the success of this project will be rooted in a rigorous early site study. Our team understands the importance of Liberty Park's setting and constraints, including flood-way considerations, sun, wind, noise, and neighborhood impacts. Challenges such as floodplain requirements are not obstacles, but opportunities to thoughtfully orient the structure, maximize views, respect adjacent properties, and design for resilience. Familiarity with the Marshall area - including collaboration with Stockwell Engineers - positions our team well to navigate these complexities while delivering a solution that is both practical and inspiring.

A bandshell is a structure that may sit quietly much of the time, yet it must always contribute positively to its surroundings. We approach this with the belief that good ideas do not have to cost more. Our design philosophy emphasizes durability, timelessness, and achieving the best possible value for the community - creating a structure that is beautiful every day, functional during events, and memorable as a landmark and gathering place.

While historic preservation is not the primary driver of this project, Koch Hazard Architects has a strong track record of working successfully with the Minnesota State Historic Preservation Office and integrating stakeholder input in a respectful and constructive manner. We understand the importance of honoring the legacy of Liberty Park while confidently looking forward.



Our firm is fully qualified to meet the complete scope of work outlined in the City's Request for Proposals, including schematic design, public engagement, cost validation, construction documentation, bidding assistance in accordance with Minnesota State Law, construction administration, and compliance with MNHS grant requirements.

For the Marshall Bandshell project, Koch Hazard Architects has assembled a dedicated design team made up of trusted consultants and subject matter experts, including structural, electrical, mechanical, civil, landscape, and acoustical professionals. These firms are long-standing collaborators with whom we have completed numerous projects, allowing us to work efficiently, communicate openly, and anticipate challenges early in the design process. Our established working relationships foster a high level of coordination and mutual accountability across all disciplines.

We believe the strongest projects are built on collaboration, transparency, and clear responsibility. By engaging our consultants early and working as an integrated team, we are able to balance technical performance, cost control, and design quality throughout the life of the project. This approach supports informed decision-making, minimizes risk, and ensures the final result is delivered on time and on budget - while creating a functional, durable, and beautiful public space the Marshall community can enjoy for generations.

This letter serves as a binding transmittal of our proposal. We guarantee that this proposal, including all proposed fees and costs, shall remain valid for a period of ninety (90) days beyond the proposal submission date.

We are enthusiastic about the opportunity to explore what is possible for Marshall's next bandshell - working collaboratively with the City, advisory committees, and the community to create a space that elevates Liberty Park and strengthens Marshall's identity for generations to come.

Sincerely,

KOCH HAZARD ARCHITECTS

A handwritten signature in black ink, appearing to read 'Ka J', with a long horizontal flourish extending to the right.

Keith Thompson, AIA | LEED AP BD+C  
Principal & Lead Architect

431 N Phillips Ave Suite 200  
Sioux Falls, SD 57104  
(605) 782-8731  
kthompson@kochhazard.com

# CITY OF MARSHALL BANDSHELL

*Request for Proposal:*

*Design, Architecture and Engineering Services*

*January 30th, 2026*



# Table of Contents

Bandshell Design Team

Past Performance

Approach & Methodology

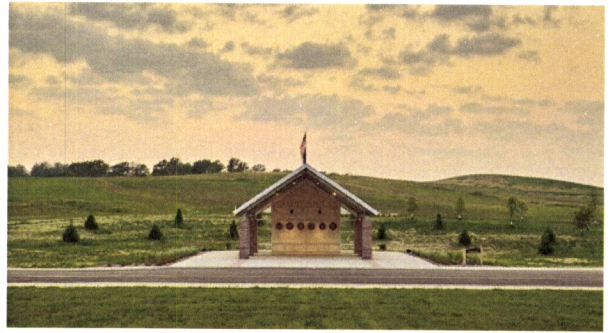
Construction Administration  
Project Management

Cost Controls

Availability

Schedule

References



Koch Hazard Architects, founded in 1961, is a professional service firm of 15 architects, planners, and interior designers in Sioux Falls, SD. The firm primarily practices in eastern South Dakota, but also provides design services in Iowa and Minnesota.

Koch Hazard Architects focuses its energies and expertise on architecture, planning, and interiors and retains the most qualified consultants in engineering and other disciplines as needed. The firm is organized to maximize the involvement of Principals in all aspects of the project delivery process. A Principal directed team is created for each client and stays with that client, maintaining continuity of communication, coordination and enhancing quality.

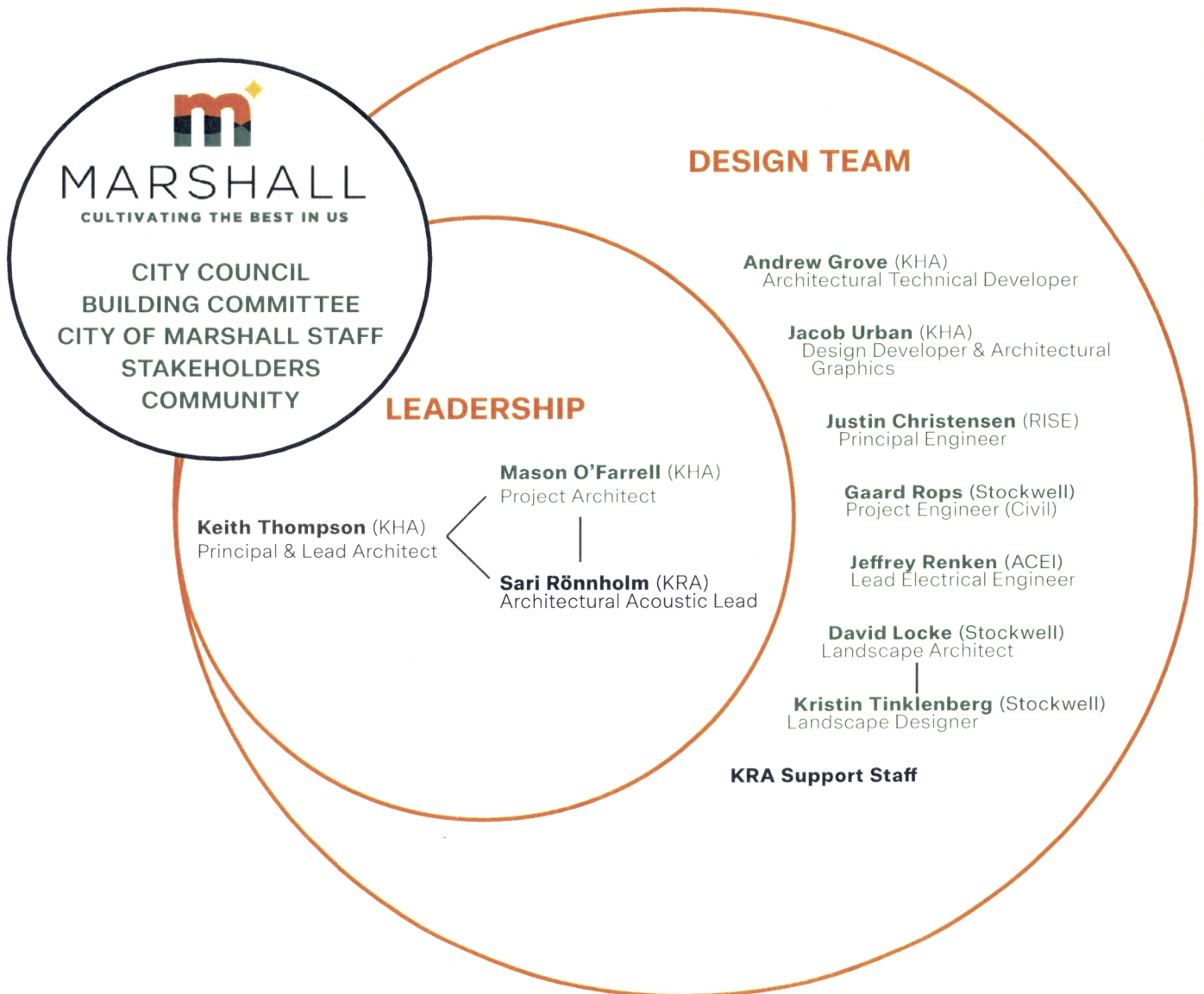
Koch Hazard Architects is committed to excellence in client service. We work closely with and listen carefully to our clients, then produce - constantly striving to exceed expectations. Each Koch Hazard Architects project is a unique, innovative response to a specific set of client needs and project circumstances. Client satisfaction is our measure of success.

# Bandshell Design Team

Koch Hazard Architects has assembled a team that provides the right mix of architectural and engineering experience to deliver this project on time, on budget, and to a high standard of quality. We thrive in engaging the full project team - including building committees, City staff, elected officials, and community stakeholders - and our process is intentionally structured to gather input, share information, and maintain clear communication throughout each phase of the project.

While the Lead Architect holds overall responsibility for project coordination, quality, schedule, and budget, the project is executed through close collaboration with the entire design team. Each discipline lead and consultant is accountable for their respective scope of work and reports directly to the Lead Architect. This structure ensures clear lines of responsibility while allowing ideas, expertise, and problem-solving to flow freely across the team.

We believe this collaborative approach leads to better outcomes - balancing technical rigor with creative exploration - while maintaining a single point of accountability for the City. The organizational structure shown reflects both the clear leadership and the integrated teamwork that will guide the Marshall Bandshell project from concept through completion.





## PRINCIPAL IN CHARGE

KEITH THOMPSON, AIA, LEED AP BD+C



Keith will serve as the Principal in Charge for your project. He is known for working creatively with clients, consultants and contractors to produce high quality projects on time and within budget. Keith will provide overall leadership for your project and be involved with your project from start to finish. He is very active in his projects during all phases. Keith brings more than 23 years of experience and has worked on a vast array of project types, bringing a unique perspective and understanding of challenges as well as a focus on transparency and solutions based communication.

### EDUCATION

Bachelor of Architectural Studies | Iowa State University

### EXPERIENCE

Koch Hazard Architects | 19 years  
Total Experience | 23 years

#### City of Sioux Falls

Van Eps Park Pavilion  
City Center  
Denny Sanford Premier Center  
City Center Third Floor Build Out  
Utility Billing Building Renovation  
Sherman Park Shop (in design)  
City Light, Power and Traffic Facility

#### State of South Dakota

Veterans Cemetery Office, Shop and Committal Shelter

#### Sanford Health

32nd & Ellis Medical Office Building  
Various Clinic renovations  
Imagenetics Medical Office Building

#### Bedford Industries | Worthington, MN

Innovation Center  
Various Additions and Renovations

#### Sioux Falls School District

Central Services Addition/ Renovation  
Washington High School Auditorium  
Roosevelt High School Auditorium  
Memorial Middle School Auditorium  
Ben Reifel Middle school Auditorium  
Cleveland Elementary School Addition  
Patrick Henry Middle School Renovation  
Edison Middle School Renovation  
Various Other Additions and Renovations

#### Stockwell Engineers

Office Building - Sioux Falls  
Office Building - Yankton

#### City of Worthington, MN / Nobles County

Worthington Library Renovation  
Worthington Armory Renovation  
Prairie Justice Center Renovation

#### Tea School District

Tea High School CTE Addition  
Tea High School Renovation & Addition:  
• Performing Arts Center, classrooms, athletic facilities, administration suite and other flexible spaces.  
Venture Elementary School  
Frontier Elementary School Addition

#### Sioux Falls Christian School District

Performing Arts Center Study  
Miscellaneous Additions and Renovations



# PROJECT ARCHITECT

MASON O'FARRELL | DESIGN & OVERALL PROJECT SUPPORT



Mason will serve as the Project Manager for your project, and assist Keith with overall design. He will be involved during your project's entirety, leading the document development for your project and assisting with Construction Administration.

## EDUCATION

Master of Architecture, Design Build Certificate | University of Colorado, Denver  
Bachelor of Science in Architecture - Minor in Construction | South Dakota State University

## EXPERIENCE

Koch Hazard Architects | 5 years  
Total Experience | 8 years

### Sioux Falls School District

Washington High School  
Roosevelt High School

### Children's Home Society

Dining Hall Improvements | Sioux Falls, SD

### Minnehaha County Annex Building

Renovation | Sioux Falls, SD

### Flandreau Santee Sioux Tribe

Miscellaneous Projects | Flandreau, SD

### Augustana University

Bergsaker Hall Renovations  
Solberg Hall Renovations  
Chapel of Reconciliation Addition and Renovations | Sioux Falls, SD

### Douglas County School District

High School CTE, Denver Metro, CO\*

### Strum Collaboration Campus

Castle Rock, CO\*

### Sioux Falls Area Community Foundation

Additions & Renovation, Sioux Falls, SD

### Trailhead Learning Center

Yankton School District | Yankton, SD

### Graham Family Capital Inc.

Office Building | Sioux Falls, SD

### Minnehaha Country Club

Lower Level Renovation | Sioux Falls, SD

### Children's Home Society

Daugaard Dining Hall | Sioux Falls, SD  
Masterplan Study | Sioux Falls, SD

### Minnehaha County

Public Defenders & Health And Human Services,  
| Sioux Falls, SD

### Bon Homme CTE

Bon Homme School District | Tyndall, SD

\* previous employer



**KVERNSTOEN, RÖNNHOLM  
& ASSOCIATES**  
CONSULTANTS IN ARCHITECTURAL ACOUSTICS

Kvernstoen, Rönholm & Associates (KRA) is one of the leading architectural acoustics consulting firms in the upper Midwest. KRA has provided acoustical consulting services for over 1,000 projects throughout the United States and abroad.

Although KRA is widely known for their work with auditoriums and performing arts facilities, the firm has also worked extensively with educational facilities, libraries, commercial buildings, churches, court facilities, athletic facilities, and government buildings.

### Areas of expertise:

1. Room Acoustics and Environments
2. Sound Isolation Between Interior Spaces
3. Interior Mechanical Noise Control
4. Community Noise Issues
5. Impact & Vibration Isolation

KRA strives for acoustic excellence, while seeking to balance the realities of budget, visual aesthetics, utility, and performance.

### SELECTED RELEVANT EXPERIENCE

- Richland County Event and Performance Center, Colfax, ND (including outdoor stage)
- Levee Park Pavilion, Hastings, MN
- Cascade Lake Park Band Shell/ Amphitheater, Rochester, MN
- Civic & Memorial Amphitheater, Brooklyn Center, MN
- Veterans Park Bandshell, Richfield, MN

**SARI RÖNNHOLM, D.M.A.**  
ROLE: ACOUSTICAL CONSULTANT



Sari has worked in architectural acoustics since 1999. She has acted as acoustical consultant for a wide range of projects including arts, educational, government, and corporate buildings. Sari has expertise and experience on all aspects of architectural acoustics including sound isolation, room acoustics, and mechanical noise issues.

She works closely with the architectural and mechanical engineering team to ensure that the design meets user needs and pertinent acoustic standards and develops innovative yet practical techniques and methods for sound and vibration control.

#### **EDUCATION**

M.M. Sibelius-Academy, Helsinki, Finland  
D.M.A. University of Minnesota, Minneapolis, MN

#### **PROFESSIONAL AFFILIATIONS**

Acoustical Society of America  
American Symphony Orchestra League



# ARCHITECTURAL TECHNICIAN

ANDREW GROVE



Andrew is an architectural technician who works with consultants and project team members to produce quality construction documents using the latest computer-assisted design technology. With over 12 years of experience, Andrew has proven an unparalleled attention to detail and has worked on all types of projects both large and small.

## EDUCATION

Associates in Architectural Engineering | Southeast Technical College

## EXPERIENCE

Koch Hazard Architects | 10 years  
Total Experience | 12 years

## Select Project Experience:

### Huron School District

CTE Academy and CTE Addition | Huron, SD

### Evangelical Lutheran Good Samaritan Society

National Campus Headquarters School Addition | Sioux Falls, SD

### Parker School District

School Addition | Parker, SD

### Parker School District

Facility Study | Parker, SD

### Dakota Alliance Soccer Club

Indoor Turf Facility Study | Sioux Falls, SD

### Cresten Property Management

Cresten Apartment Complex, Sioux Falls, SD

### First Avenue Mixed-Use Project

Sioux Falls, SD

### Pierre School District

Riggs Wrestling Room Addition | Pierre, SD

### Huron School District

Buchanan Elementary School Addition | Huron, SD

Madison Elementary School | Huron, SD

### Yankton School District

Trailhead Early Childhood Learning Center | Yankton, SD

### University of Sioux Falls

Bob Young Field Stadium Improvements | Sioux Falls, SD

### Sioux Falls School District

Howard Wood Field House | Sioux Falls, SD

### Cherapa Place

Cherapa II Conceptual Development | Sioux Falls, SD

### Sioux Valley School District

Performing Arts Center | Volga, SD



# DESIGN DEVELOPER & GRAPHICS

JACOB URBAN



Jacob is an architectural graphic designer who is skilled in a wide variety of programs to innovatively portray project design and character. He works on a wide variety of projects in the early phases of the design process. Jacob will work to bring the project to life graphically. Providing enhanced three-dimensional imaging and virtual walk-throughs, allowing you and your stakeholders to "see" the possibilities before construction begins.

## **EDUCATION**

Bachelor of Architectural Studies | South Dakota State University

Master of Architecture | South Dakota State University

## **EXPERIENCE**

Koch Hazard Architects | 10 years

Total Experience | 12 years

## **Select Project Experience:**

### **South Dakota Art Museum**

Conceptual Graphics | Brookings, SD

### **Sioux Falls Area Community Foundation**

Conceptual Graphics | Sioux Falls, SD

### **Children's Home Society Existing Campus Study**

Sioux Falls, SD

### **Sports Complex Study**

Sioux Falls, SD

### **Facility Conditions Assessment and Planning Report**

Yankton School District | Yankton, SD

### **Minnehaha Country Club,**

Conceptual Graphics | Sioux Falls, SD

### **LifeScape New Campus**

Concept Development | Sioux Falls, SD

### **Children's Inn New Facility, Planning & Programming**

Sioux Falls, SD

### **Sioux Steel Office Building**

Conceptual Graphics | Sioux Falls, SD

### **Vermillion Community Center Feasibility Study**

Conceptual Graphics | Vermillion, SD

### **Lincoln Hall Phase 2**

Conceptual Graphics

South Dakota State University | Brookings, SD

### **Housing Updates**

Conceptual Graphics

Augustana University | Sioux Falls, SD

### **Student Union**

Conceptual Graphics

Augustana University | Sioux Falls, SD

### **Chapel of Reconciliation**

Conceptual Graphics

Augustana University | Sioux Falls, SD

# ▶▶▶ COMPANY PROFILE

We strive to be regarded as the Midwest’s most TRUSTED and DYNAMIC resource for innovative planning, civil engineering, and landscape architecture solutions that are essential to building safer, more harmonious communities.

From concept and planning all the way through design and construction, our multi-disciplinary team stands ready to deliver. We pride ourselves in thinking solutions through very carefully in order to stay on track to meet your objectives - on time and on budget.

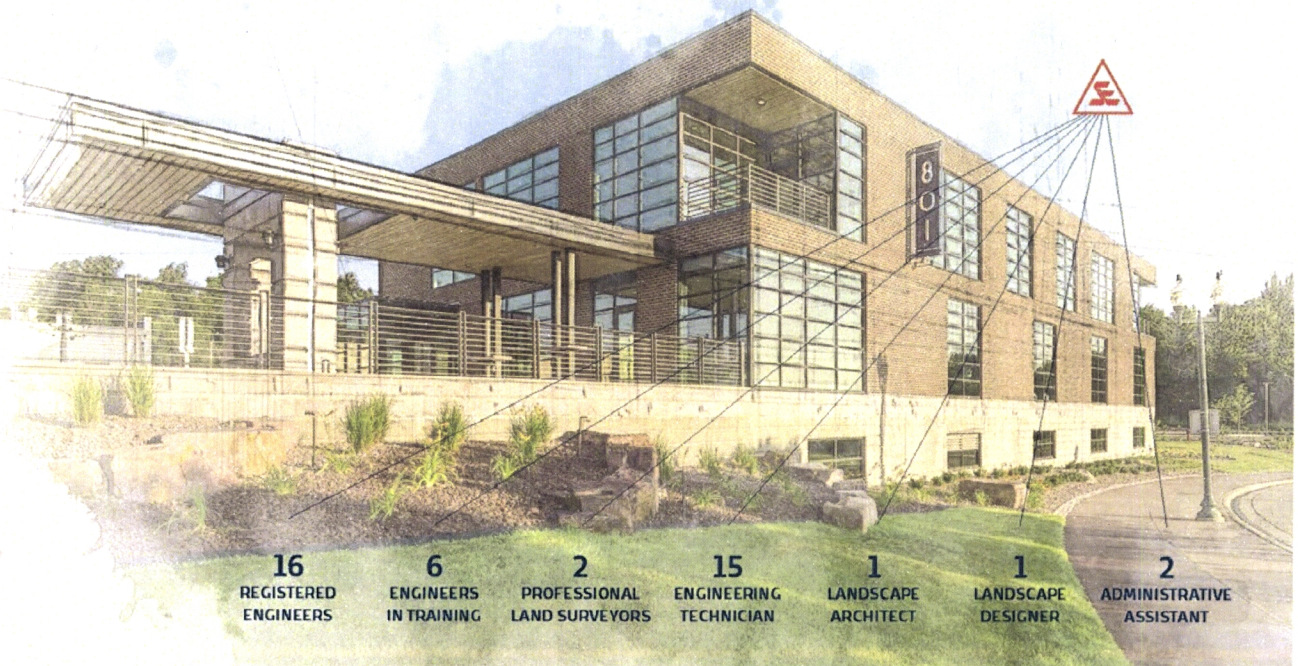
## OUR HISTORY

- 1981 | Company Established in Sioux Falls, South Dakota Under the Name Naughton Stockwell Engineers
- 1984 | Reorganized as Stockwell Engineers
- 2015 | Expansion to Include Yankton, South Dakota Office



## OUR SERVICES

- Landscape analysis and design
- Preliminary surveys
- Route Design surveys
- Topographical and boundary surveys
- Hydrographical surveys
- Construction staking
- Legal surveys
- Rail designs and inspection
- Development site planning and design
- Feasibility analysis and life cycle comparisons
- Recreation field & park system analysis, planning, and design
- Drainage analysis and design
- Water and wastewater system analysis and design
- Street, highway, and parking lot design



**16**  
REGISTERED  
ENGINEERS

**6**  
ENGINEERS  
IN TRAINING

**2**  
PROFESSIONAL  
LAND SURVEYORS

**15**  
ENGINEERING  
TECHNICIAN

**1**  
LANDSCAPE  
ARCHITECT

**1**  
LANDSCAPE  
DESIGNER

**2**  
ADMINISTRATIVE  
ASSISTANT



AT A

*glance*

### EDUCATION

Iowa State University,  
Bachelor of Landscape Architecture, 2008

### REGISTRATION

Professional Landscape Architect - Tennessee,  
South Dakota (No. 11267), Iowa, Wyoming,  
Montana, North Dakota, and Washington  
LEED Accredited Professional - Neighborhood  
Development

CLARB Certified Landscape Architect

### ORGANIZATIONS

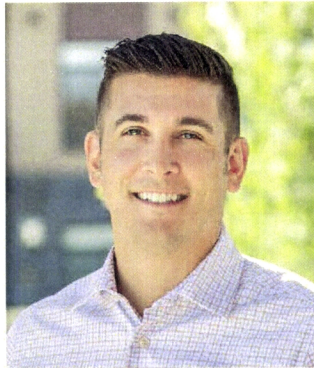
American Society of Landscape Architects -  
National & Nebraska/Dakotas Chapter  
United States Green Building Council  
City of Sioux Falls Board of Adjustments

### RELEVANT EXPERIENCE

Westside Park  
Yankton, South Dakota  
Central Park Master Plan  
Harrisburg, South Dakota  
Levitt at the Falls  
Sioux Falls, South Dakota  
Marshall Aquatic Center  
Marshall, Minnesota  
Rock Valley City Park  
Rock Valley, Iowa  
Capitol Lake Master Plan  
Pierre, South Dakota

### EMPLOYMENT EXPERIENCE

Stockwell Engineers  
Sioux Falls, South Dakota  
Landscape Architect | 2012 - Present  
Barge, Waggoner, Sumner & Cannon, Inc.  
Nashville, Tennessee  
Landscape Architect-in-training | 2008-2011



**DAVID LOCKE, PLA**  
**Landscape Architect**

13 YEARS WITH STOCKWELL

David has valuable experience in landscape architecture and landscape construction. Past experience includes master planning of commercial and institutional sites, parks and recreation facilities and streetscapes. His experience is apparent in his ability to translate client ideas into visual aids and conveys his ideas through graphics in meetings.

David brings a vision to each project and has specific expertise in commercial site and landscape design, park master planning, streetscape design, sports facility design, xeriscape, and other sustainable stormwater management practices. He has organized and lead multiple design charrettes and public input sessions for many multi-million dollar projects that his team has helped bring to life for multiple communities. Gathering and utilizing stakeholder and public input to develop design solutions that fits the needs of communities takes the touch of a skilled project manager and David brings these skills and a vision to each project. He values clients' trust and commits to developing and maintaining those relationships while guiding his team of creatives to deliver custom designs for each project.





AT A

*glance*

**EDUCATION**

South Dakota State University,  
BS Civil Engineering, 1998

**REGISTRATION**

Professional Engineer - South Dakota (No. 8738),  
North Dakota, & Minnesota

**ORGANIZATIONS**

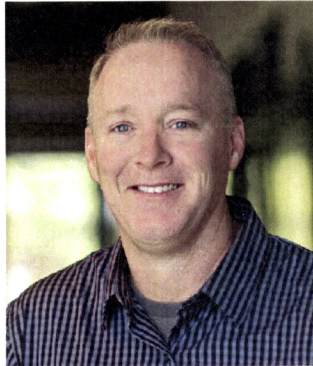
National Society of Professional Engineers  
South Dakota Engineering Society

**RELEVANT EXPERIENCE**

- Westside Park  
Yankton, South Dakota
- Central Park Master Plan  
Harrisburg, South Dakota
- Levitt at the Falls  
Sioux Falls, South Dakota
- Marshall Aquatic Center  
Marshall, Minnesota
- Rock Valley City Park  
Rock Valley, Iowa
- Capitol Lake Master Plan  
Pierre, South Dakota

**EMPLOYMENT EXPERIENCE**

- Stockwell Engineers  
Sioux Falls, South Dakota  
Civil/Municipal Engineer  
2006 - Present
- Ulteig Engineers  
Fargo, North Dakota  
Project Engineer  
2002 - 2006



**GAARD ROPS, PE**  
**Project Engineer**

19 YEARS WITH STOCKWELL

Gaard's experience at Stockwell Engineers has primarily been in the design, plan and specification preparation, construction observation and administration of various street and utility reconstruction projects, which include street rehabilitation, urban street design, water main design, and sanitary and storm sewer design.

In addition, Gaard has extensive experience with infrastructure design including the development of site, utility, grading, drainage, and erosion control plans, parking lot layout, and also in the design of residential, commercial, and industrial developments.

The experience Gaard has gained over the past 20 years has assisted him in his responsibilities for the supervision of the design and ongoing progress of a project with individual clients and governmental agencies.





AT A

*glance*

**EDUCATION**

South Dakota State University,  
Bachelor of Science in Landscape Architecture,  
2012

**ORGANIZATIONS**

National Recreation and Park Association

**RELEVANT EXPERIENCE**

Westside Park  
Yankton, South Dakota

Central Park Master Plan  
Harrisburg, South Dakota

Levitt at the Falls  
Sioux Falls, South Dakota

Marshall Aquatic Center  
Marshall, Minnesota

Rock Valley City Park  
Rock Valley, Iowa

Capitol Lake Master Plan  
Pierre, South Dakota

**EMPLOYMENT EXPERIENCE**

Stockwell Engineers  
Sioux Falls, South Dakota  
Landscape Designer  
2018 - Present

Landscape Garden Centers  
Sioux Falls, South Dakota  
Commercial Landscape Planner  
2013 - 2018



**KRISTIN TINKLENBERG**  
Landscape Designer



Kristin brings a unique blend of design expertise and practical knowledge to landscape projects. Her career began with hands-on experience as a commercial landscape installer, giving her a deep understanding of the construction process. She then transitioned to design, tackling projects ranging from small retail spaces to expansive university sports complexes.

Leveraging this experience, Kristin excels at translating client visions into reality. She utilizes her design skills to create compelling graphics and digital models that showcase a project's potential. Furthermore, her construction knowledge allows her to translate those designs into detailed plans and ensure their successful execution through project administration.

At Stockwell Engineers, Kristin plays a key role in a variety of projects, including master plans, parks, recreation facilities, and streetscapes. Her ability to bridge the gap between design and implementation makes her a valuable asset to the team.





RISE was formed in 1998 providing Structural Engineering, Forensic and Light-Gage design services for projects of all sizes across the country. Our team is committed to excellent communication, coordination and meeting project deadlines. We utilize the most advanced structural analysis programs as well as BIM and CAD software programs.

We provide structural engineering drawings for agricultural, commercial and residential projects of all shapes and sizes across the country. Additionally, Rise provides structural plan review services for building departments in municipalities that don't have in-house structural engineers.

## SELECTED EXPERIENCE

- McKennan Park Bandshell Restoration | Sioux Falls, SD
- Pioneer Park Bandshell Restoration | Brookings, SD
- Historic Tea Catholic Church Structural Assessment | Tea, SD
- Madison City Hall | Madison, SD
- Orange City Pool House Restoration | Orange City, IA
- Watertown Airport Terminal | Watertown, SD
- Marshall Plaza Pergola Restoration | Marshall, MN
- Tuthill Park Restroom & Shop | Sioux Falls, SD
- Greenway Plaza | Sioux Falls, SD
- Aspen Seemann Memorial Park | Spirit Lake, IA
- Columbia Park & Ball Field | Columbia, SD
- Jacobson Plaza | Sioux Falls, SD
- South Dakota Air National Guard Bldg #17 | Sioux Falls, SD
- Sioux Falls Water Reclamation Facility | Sioux Falls, SD

JUSTIN CHRISTENSEN, PE  
ROLE: PRINCIPAL ENGINEER



Justin Christensen has served as the president of RISE Structural Associates for the past 13 years, bringing more than two decades of structural engineering expertise to the firm. Throughout his career, he has played a key role in numerous city-funded initiatives, including several prominent outdoor bandshell projects such as the McKennan Park Bandshell in Sioux Falls and the Pioneer Park Bandshell in Brookings. In each of these efforts, J

Justin led the work as the senior project manager, overseeing design coordination, structural planning, and project execution. Drawing on that extensive experience, Justin would again serve as the senior project manager for the Marshall Bandshell project, providing the same level of leadership and technical guidance that has defined his previous successes.

## EDUCATION

Bachelor of Science in Civil Engineering - Emphasis in Structural Engineering | Marquette University

## Registrations:

- |                |              |                |
|----------------|--------------|----------------|
| • South Dakota | • Minnesota  | • Pennsylvania |
| • Iowa         | • Washington | • Montana      |
| • North Dakota | • Wyoming    | • Oregon       |
| • Kansas       | • Colorado   | • Arkansas     |
| • Nebraska     | • Wisconsin  | • New York     |



**ASSOCIATED  
CONSULTING  
ENGINEERING  
INCORPORATED**

ACEI is a consulting engineering firm providing mechanical and electrical systems design since 1987. ACEI offers integrated mechanical and electrical engineering services for the design of plumbing, fire protection, heating, ventilation, air conditioning, building automation, lighting, power, sound and communication systems.

ACEI's staff includes registered engineers, designers, technicians, AutoCad®/REVIT® operators and clerical personnel. ACEI's personnel offer a high degree of expertise and innovative design capabilities to their clients for specific or general consultation, feasibility studies, design, drawings and specifications and construction reviews and observation.

### **SELECTED EXPERIENCE**

- McKennan Park Bandshell Restoration | Sioux Falls, SD
- Fawick Park Bandshell | Sioux Falls, SD
- Corn Palace Plaza | Mitchell, SD
- Watertown Foundation Plaza | Watertown, SD
- Sioux Falls School District
  - Lincoln High School Theater Renovations
  - Roosevelt High School Theater Renovations
  - Washington High School Theater Renovations
- STI (now STC) Student Success Center Renovation and Additions
- Mitchell Schools CTE Academy, Mitchell, SD
- Avera Practice Facility - Sioux Falls, SD
- Sisseton Athletic Complex - Sisseton, SD
- Lake County Courthouse HVAC & Electrical and Restroom - Sioux Falls, SD

**JEFFREY RENKEN, PE**  
ROLE: PRINCIPAL ELECTRICAL ENGINEER



Jeff will be the principal Electrical Engineer for this project and is responsible for the design, coordination, specification of the electrical system. The design process will determine which systems are needed to fit into the project scope and budget. Jeff will provide expertise that will ensure the bandshell is appropriately powered for permanent systems such as lighting, security, fire alarms, etc., and for future or temporary systems that may be brought in such as sound equipment and stage lighting. Jeff will work closely with the design team to provide a system that is durable, affordable and accessible to the end users.

### **EDUCATION**

Bachelor of Science in Electrical Engineering | South Dakota State University  
Diploma in Electrical Construction | Southwestern Technical College

### **EXPERIENCE**

ACEI experience | 21 years  
Total Experience | 31 years

### **Registrations:**

- South Dakota
- North Dakota
- Minnesota
- Iowa

# Past Performance | Koch Hazard

## LEGACY PROJECTS

Koch Hazard Architects has a long-standing history of designing community-focused performing arts spaces. From the renovation of bandshells and historic concert halls to the design of new, state-of-the-art performing arts centers, our work is grounded in the belief that successful performance spaces bring communities together. Throughout the design process, we give equal consideration to the needs of performers and audiences, ensuring each space supports both technical performance and a meaningful shared experience. Koch Hazard Architects is known for creating timeless designs and delivering projects on time and on budget.

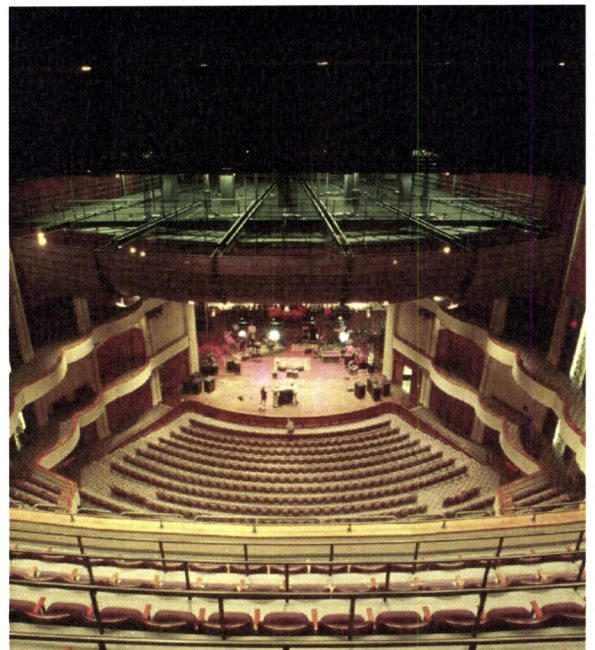
### WASHINGTON PAVILION - Sioux Falls, SD

#### DESIGN SUMMARY

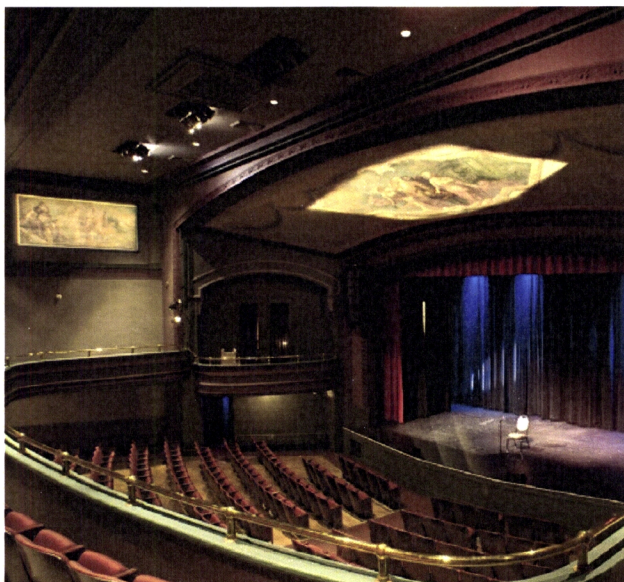
The Washington Pavilion of Arts and Science transforms historic Washington High School to house three cultural entities. The Husby Performing Arts Center occupies the center of the building and includes the 1900-seat Great Hall, the 300-seat Belbas Theater and a multipurpose hall. The Visual Arts Center occupies the four floors of the building's 1906 north wing and features five major galleries. The Kirby Science Discovery Center occupies the four floors of the 1917 south wing and includes the Wells Fargo CineDome, a new large format domed theater, constructed adjacent to the southeast corner of the original building.

Koch Hazard Architects provided complete architectural, interior design and construction administration services for this addition and renovation.

Date of Completion: 1999 | Area: 230,000 SF  
2001 AIA South Dakota Design Merit Award winner



### ORPHEUM THEATER - Sioux Falls, SD



#### DESIGN SUMMARY

The Orpheum Theater in Sioux Falls asked Koch Hazard to renovate the entire Orpheum complex which included two buildings that needed to be linked and refreshed. The south building, formerly known as the "Rainbow Bar", was converted to a black box theater - the Anne Zabel Studio Theater - as well as a classroom space. The newly built center building creates a fresh main entrance and consists of two structures with a center landscaped courtyard. Front and back "Link" structures join the two older buildings together to create a new lobby space, loading dock and storage areas. The renovation also included new office space for several tenants.

Date of Completion: 2006 | Area: 37,700 SF  
2008 AIA South Dakota Design Merit Award Winner

# Past Performance | Koch Hazard

## TEA HIGH SCHOOL - Tea Area School District, Tea, South Dakota

### Design Summary

The Tea School District asked Koch Hazard Architects to partner with them for a combination renovation and addition project for their existing High School. With the goal of accommodating the expected growth over the next twenty years, our approach looked at all aspects of space. From traffic flow of students, correct sizing of the auditorium and PAC, to flexible spaces and dedicated areas for science, music and other classrooms. We ensured the new facility would serve all students, enhance curriculum and spend every dollar wisely.

A highlight of this project is a new, state-of-the-art, 1,200 seat Performing Arts Center.



*Date of Completion: 2025 | Area: 230,193 SF*

## BEN REIFEL MIDDLE SCHOOL - Sioux Falls School District, Sioux Falls, SD

### Design Summary

Ben Reifel Middle School is the first school east of Highway 11/ Veterans Parkway, about a half mile down 41st Street in Sioux Falls, SD. The school combines the features of the previous George McGovern and Memorial Middle Schools, while also incorporating dispersed storm shelters to house the entire school population in inclement weather.

Designed for an ultimate student body of 1200 6th, 7th and 8th graders, the school covers over 180,000 square feet. One prominent feature of the project is a 499-seat auditorium.



*Date of Completion: 2021 | Area: 180,000 SF*

## O'GORMAN PERFORMING ARTS CENTER - Bishop O'Gorman Catholic School District | Sioux Falls, SD

### Design Summary

Koch Hazard teamed with The Winkels Group to design a new 940-seat proscenium theater on the O'Gorman campus. The Performing Arts Center is a continuation of a series of additions and renovations to the existing High School. The theater has tiered main level seating, a tiered mezzanine and side arm seating. The project includes the expansion of the new lobby, ticketing office, dressing rooms, scene shop, and a future green room. The exterior form continues the curve of the school's main entry and utilizes the materials and rhythm of the academic wings.

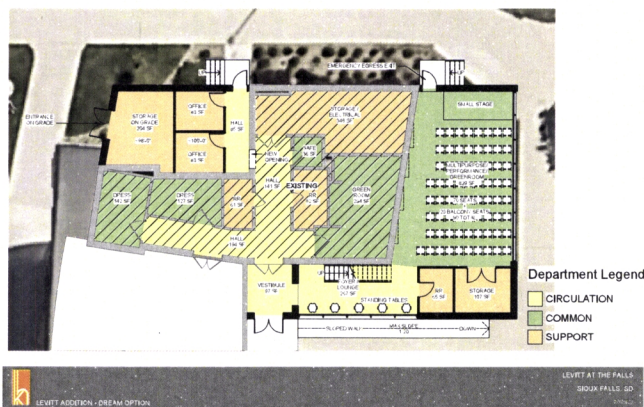


*Date of Completion: 2010 | Area: 26,725 SF*

# Past Performance | Koch Hazard

## LEVITT SHELL STUDY - Sioux Falls, SD

Koch Hazard Architects was approached by the Levitt Board to explore additions for much-needed storage and to possibly expand their programming options. The study pushed the organization to dream big and plan for an indoor multipurpose performance venue that will function year-round, growing their mission and capacity to do even more in the Sioux Falls community.



## LENNOX BANDSHELL - Vermillion Area Chamber and Development Company - Vermillion, SD



The City of Lennox, SD bandshell was constructed in 1963 and is home to the oldest municipal band in the state of South Dakota. Following a structural assessment, the City of Lennox chose to move forward with a renovation of the existing bandshell.

Improvements included structural reinforcement of the superstructure, a new stage surface, insulated cladding for the foundation walls, new lighting and repainting.



Cost: \$180,000  
Completion: 2024

# ▶▶▶ CENTRAL PARK MASTER PLAN

## HARRISBURG, SOUTH DAKOTA

The Central Park Master Plan in Harrisburg, South Dakota establishes a comprehensive vision for a vibrant, multi-generational community park that supports recreation, play, and gathering throughout the year. Designed to strengthen park identity and improve connectivity, the master plan organizes a diverse mix of active and passive amenities while enhancing access, circulation, and long-term functionality across the site.

At Stockwell, we led the planning and design efforts that introduced a wide range of new amenities and targeted improvements. Key additions include an Adventure Play Space, a bandshell for community performances, and a competitive gaming space that expands recreational opportunities for all ages. Enhancements to Central Hill, the Central Lawn, and the Central Promenade create clear spatial organization and flexible gathering areas for events, informal play, and everyday use.

The master plan also prioritizes upgrades to existing recreational facilities, including baseball and tee ball field improvements, disc golf enhancements, and upgraded multi-use fields. New park features such as a pavilion, splash pad and spray park, and improved maintenance yard support both visitor comfort and operational efficiency. Strategic improvements to park access and perimeter parking improve safety and usability, ensuring the park can accommodate growing community demand.

Together, these coordinated improvements create a cohesive, adaptable park system that balances active recreation with social spaces, reinforcing Central Park as a community destination and a central gathering place for Harrisburg residents.

**PRINCIPAL IN CHARGE**

David Locke, PLA

**PROJECT OWNER**

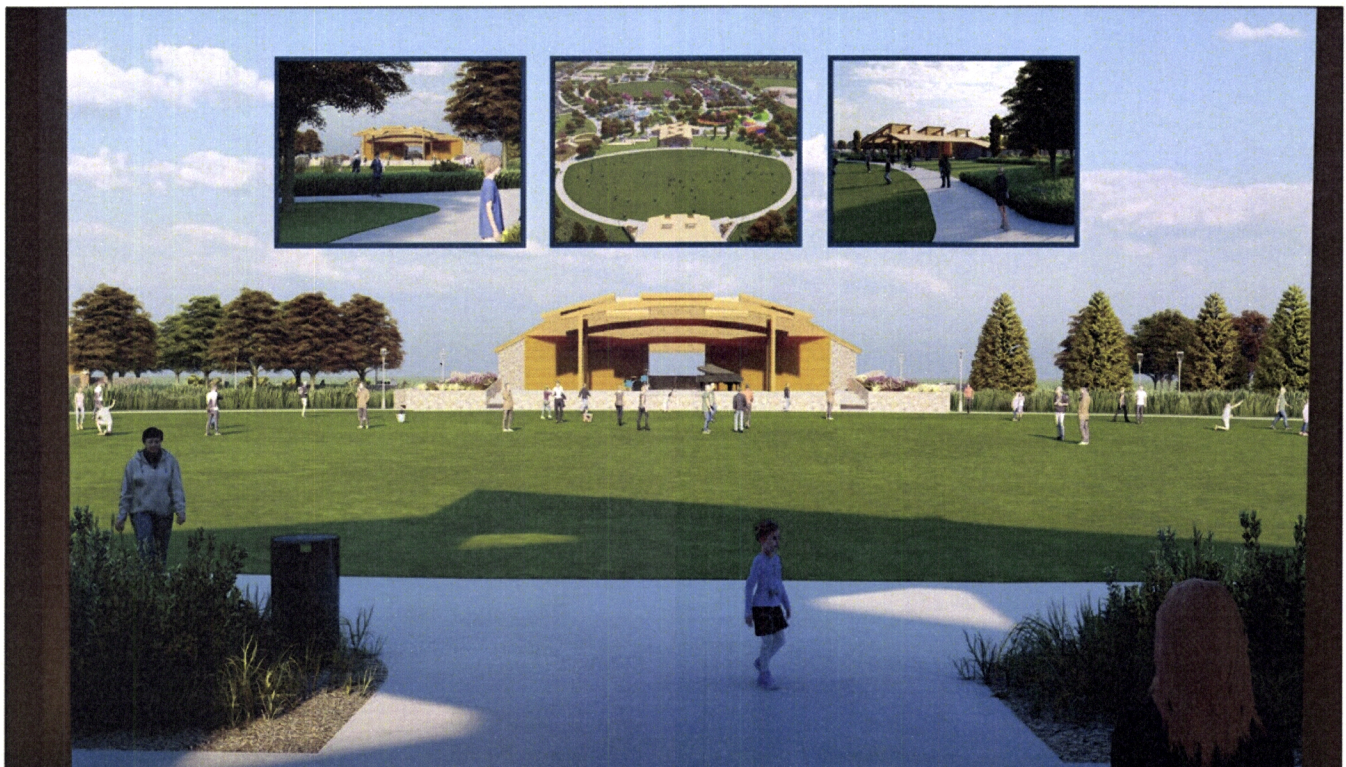
City of Harrisburg

**OWNER'S REPRESENTATIVE**

Toby Huizenga  
Public Works Director  
605.231.6168

**DATE OF COMPLETION**

N/A



# ▶▶▶ CAPITOL LAKE MASTER PLAN

PIERRE, SOUTH DAKOTA

Stockwell was commissioned by the State of South Dakota Bureau of Administration to assess existing conditions and develop a comprehensive master plan for Hilger's Gulch and South Dakota Capitol Lake. The project aimed to enhance functionality, accessibility, and environmental value within this significant civic and cultural landscape. Through a collaborative planning process involving state agencies, stakeholders, veterans' groups, and community users, Stockwell helped shape the project's guiding principles and long-term vision.

Key objectives included creating a cohesive and flexible framework for existing and future veteran memorials, improving accessibility, circulation, and wayfinding throughout the site, and planning a functional visitor center to serve tourists, school groups, and local residents. The master plan also placed a strong emphasis on improving the environmental health and sustainability of Hilger's Gulch through ecological restoration and improved site systems. Following a detailed site analysis and the development of multiple design concepts, Stockwell worked closely with the State to finalize a master plan that addressed all project goals while honoring the site's historical significance and civic importance.

**PRINCIPAL IN CHARGE**

David Locke, PLA

**PROJECT OWNER**

State of South Dakota  
Bureau of Administration

**OWNER'S REPRESENTATIVE**

Kristine Day  
Deputy State Engineer  
605.773.2434

**DATE OF COMPLETION**

N/A



▶▶▶ **LEVITT AT THE FALLS**

**SIOUX FALLS, SOUTH DAKOTA**

The Levitt Shell and Park in Sioux Falls is a thoughtfully designed civic landscape that seamlessly merges art, performance, and everyday public life. Situated on a 2.8-acre site, the park is organized around a 0.9-acre concert lawn that anchors the overall design, shaping the land to accommodate audiences for up to 50 free, donor-funded outdoor concerts each year. Beyond its role as a performance venue, the space functions year-round as an inviting urban park, offering open green space, informal gathering areas, and pathways that encourage daily use by the surrounding community even when events are not taking place.

Stockwell Engineers led the site design, site engineering, and construction administration, translating artistic vision and performance requirements into a durable, functional, and resilient landscape. Our work carefully integrates grading, drainage, and infrastructure to support large crowds while maintaining the comfort, accessibility, and safety of everyday users. Drawing on a deep understanding of the site's history and context, the design balances cultural expression with practical landscape infrastructure, creating a cohesive civic space where architecture, landform, and public art intersect. The result is a flexible and inclusive park that supports both large-scale cultural events and the quieter rhythms of daily urban life.

**PRINCIPAL IN CHARGE**

David Locke, PLA

**PROJECT OWNER**

City of Sioux Falls

**OWNER'S REPRESENTATIVE**

Don Kearney  
Sioux Falls Parks & Recreation Director  
605.367.8222

**DATE OF COMPLETION**

2019



# Past Performance



KVERNSTOEN, RÖNNHOLM  
& ASSOCIATES  
CONSULTANTS IN ARCHITECTURAL ACOUSTICS



Cascade Lake Park Band Shell / Amphitheater | Rochester, MN



McKennan Park Bandshell | Sioux Falls, SD



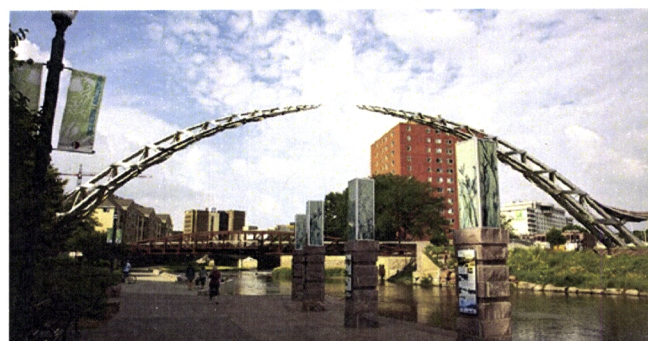
Civic & Memorial Amphitheater | Brooklyn Center, MN



Pioneer Park Bandshell | Brookings, SD



Levee Park Pavilion | Hastings, MN



Greenway Plaza | Sioux Falls, SD



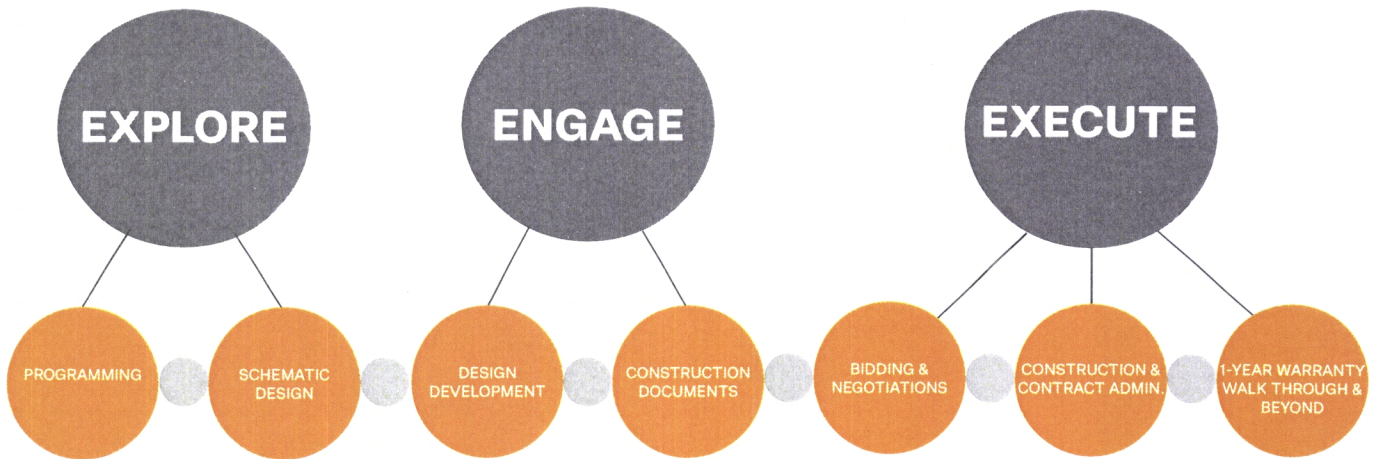
Veterans Park Bandshell | Richfield, MN



Jacobson Plaza | Sioux Falls, SD

# Approach & Methodology

The practice of architecture is about melding art and science - bringing form to an idea and improving the human experience. It can seem like a lofty goal, but it's baked in to how we work at Koch Hazard. While the technical aspects of the work are extensive and ever evolving, we are set apart by emphasizing the creative process applied to each project. We explore, engage, and then execute.

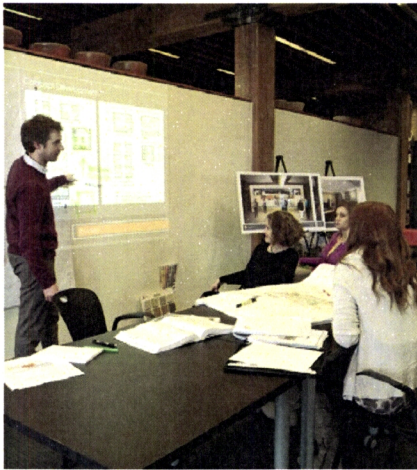


## METHODOLOGY OVERVIEW

Our design team has a system of checks and balances in place to make for a smooth and thorough process in the early stages of planning and schematic design. After meeting with Preston Stensrud, Park and Recreation Superintendent for the City of Marshall and learning more about the project, we envision the following steps taking place:

- Touring existing facility and reviewing initial program
- Complete Site Survey and Site Analysis
- Virtual and in-person tours of peer facilities
- Refining program and beginning concept design
- Reviewing and refining design option(s)
- Developing and refining cost estimate
- Finalizing SD drawings and graphics
- Public Open House / City Council Check In / Approvals
- Assist with community funding appeals
- Design development
- Further refining cost estimate
- Finalize DD drawings and graphics
- Public Open House / City Council Check In / Approvals
- Construction documents
- Bidding/Negotiation
- Construction Administration
- Ground Breaking
- Construction Administration
- Ribbon cutting
- One-year warranty walk-through

Frequent owner reviews are also a part of our methodology. We hope to firm up the above methodology with the City of Marshall Owner's Project Team at our Project Kick-Off Meeting.



## EXPLORE

The conceptualization of a project is endlessly fascinating, exciting and engaging.

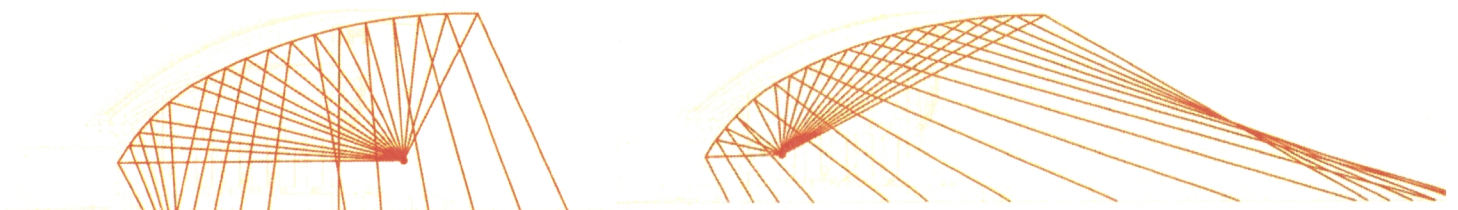
We will take a set of needs and goals, turn them over, rearrange, stretch and intertwine them. To do this, we will conduct a series of increasingly detailed discussions to fully understand all aspects of your programs. Learning about your vision, staff, workflows, processes and obstacles is a priority that we take seriously; these in-depth conversations in the early going will pay dividends throughout the design effort.

We embrace constraints and let them channel the architectural responses to the questions at hand. We enjoy engaging at the macro scale while running down the smallest tangential details, balancing function with beauty and stewardship of resources.

Through this series of meetings, tours and other interactions, we learn, review and respond with design iterations until consensus is built around a plan and architectural expression. At the end of this phase we'll have a complete **schematic design** - project scope, concept and budget.

Acoustics studies will begin with the first architectural sketches, and continue throughout design. We are excited for the structural and special sound design to intersect, inform one another and marry into a beautiful and functional form. Sound waves travel in a linear fashion, so simple diagrams can explain the impacts of each design option.

For instance, a traditional shell (below left) will focus more sound back to performers on the stage, while a flattened or extended roof can project more sound out to the seating area.



# EXPLORE

A site analysis will be one of the first efforts by the design team. Initial reviews show a potential issue with portions of the existing structure shown in the flood-way (which will be confirmed by more detailed study.) In any case, the structure is certainly in the floodplain which will carry its own set of rules and regulations. Along with environmental concerns we will study prevailing winds, below grade infrastructure, pedestrian and vehicular traffic, and any other significant site influences to inform the new design. We can quickly develop multiple options with quick vignettes similar to these examples:

## Option 1:

This shows a replacement structure on the same footprint as existing, which has worked well for the life of the facility.



## Option 2:

If flood-way constraints dictate moving the structure, one option would be tuck it in the east corner, shielding performers and using the structure and treeline to shade the audience. The back side of the shell could be more prominent, acting as a billboard facing the nearby intersection.



## Option 3:

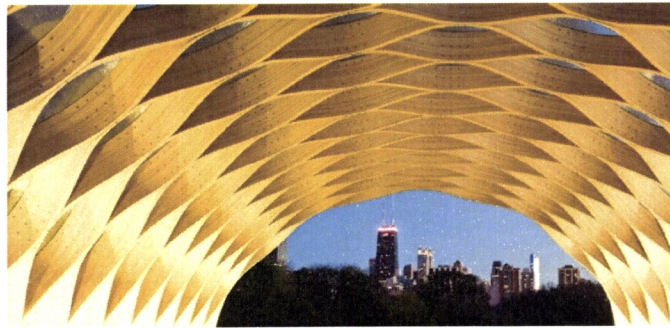
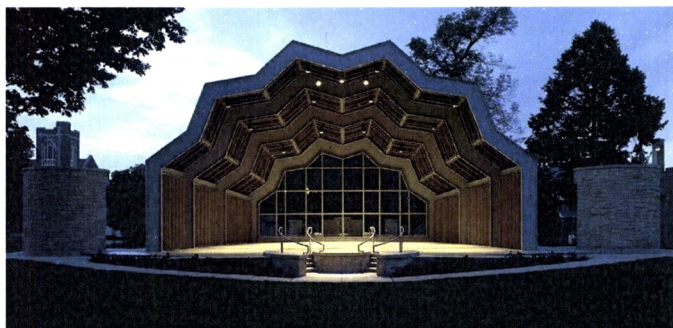
Facing the bandshell northwest might maximize audience area, naturally lighting the stage and putting the sun at viewer's backs for most events.

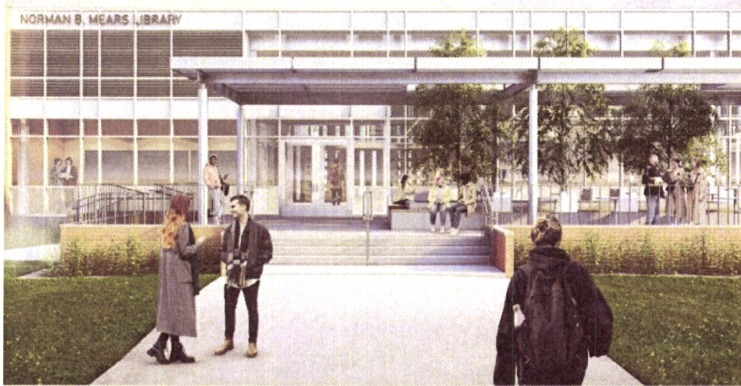
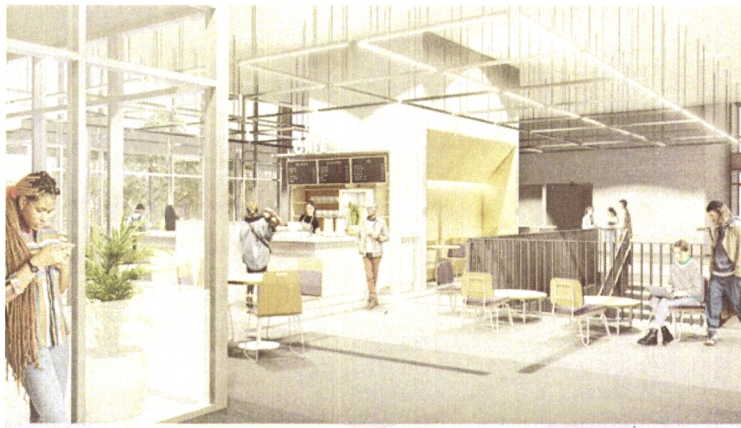


# EXPLORE

## BANDSHELL SURVEY

The bandshell form offers a breathtaking array of design options in material, massing, and amenities. We are eager to explore structural systems in wood, steel, concrete and hybrid concepts. Virtual tours and visual preference surveys will develop a shared language, establish preferences, and unearth ideas that haven't yet been considered. This will be one of the most exhilarating parts of an overall exciting experience!





## ENGAGE

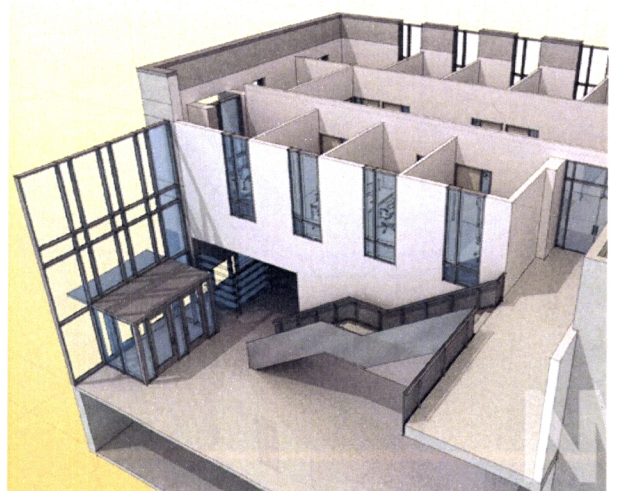
With a shared foundation of knowledge and **design intent**, we launch into **design development** to delve further into the details. We expand the exploration to include specific space requirements, Acoustics and audio systems, electrical systems, code and regulatory requirements, and other project factors.

The design team grows with multiple support staff and engineering consultants, along with more involvement from your staff and stakeholders. This intentional engagement with the entire design team ensures we stay on the right track and maintain focus on the details, no matter how big or small they may be. We're constantly adding detail to the project, resulting in **photo-realistic views** of your building that give the certainty that you know what you're getting in the final construction.

This phase wraps up all the significant design decisions, **confirms the cost estimate**, and fixes the remaining **schedule**.

## PUBLIC INPUT

Community investment projects need to allow and encourage input from the citizens they will serve. The Koch Hazard team is excited and prepared to facilitate public open houses, committee meetings, surveys and other outreach methods to ensure all voices are heard and their input is integrated into the design. We record this input visually, so participants can see their thoughts and ideas are understood and valued. Our team will act as an impartial party during these sessions, approaching the project without preconceptions and diligently focused on achieving the best possible facility for the City of Marshall. Keeping the conversations aligned with this simple goal will keep the dialogue positive, constructive and impactful in the ultimate design.

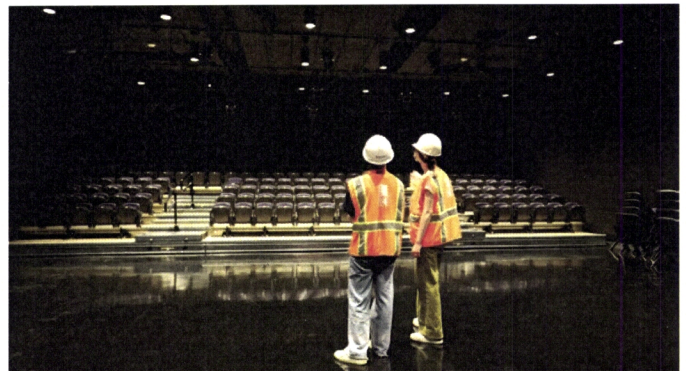


# EXECUTE

Technical know-how and 60 years of experience come to the forefront as we create the **final drawings and specifications** that comprise the construction documents. With regular touch-points, the full design team is assembled to translate all the previous input into the digital model, and from there into the plans used to build your project. Along the way we complete internal quality control checks, confirm final requirements with regulatory authorities, notify general contractors and wrap up team coordination.

Moving into the **bidding phase**, we conduct a thorough pre-bid meeting and walk-through, respond promptly to questions, issue clarifications as necessary, and ensure great participation for complete and competitive bids. Communication continues through the **construction phase** to keep the City up to date on schedule and costs.

A pre-construction meeting introduces the contractors, university representatives and design team; while also serving to set expectations for all involved. Moving forward as a team, any issues that do arise are handled transparently. As the project nears completion, we conduct pre-substantial completion meetings and inspections to ensure quality standards and schedule milestones are achieved.



# CONSTRUCTION ADMIN & PROJECT MANAGEMENT TECHNIQUES

The team presented in this proposal are the people who will be actively working on your project. Some communicating with you frequently and others more behind-the-scenes.

Open communication among team members and a solid schedule with regular meetings will allow this project to be managed efficiently and productively. We will utilize any and all appropriate tools throughout the project including virtual meetings, online studio sessions, 3D visualization and animation, drone photography, augmented and virtual reality, and 3D printing.



Koch Hazard has developed a strong construction management processes to ensure that projects are built to specified standards. We utilize an effective process for managing and communicating contractor questions and project changes through RFIs and RFPs. Koch Hazard also possesses a thorough working knowledge of the General Conditions form A201, and understands how to apply it effectively at each stage of construction. Our construction administration documentation (observation reports, progress meeting minutes,

modifications, photographs, etc.) are posted on our project extranet or construction-services website. This provides easy access to all data by all parties.

Koch Hazard has a straightforward punch-list and closeout process that begins months before project completion. Contractors are reminded at regular progress meetings of the expectation and requirements relative to substantial completion and closeout documentation. Site visits are scheduled well in advance and regular site observations are conducted leading up to the final punch-list to correct any potential major issues well before they can impact the schedule.

Concurrently, we send reminders and checklists to the contractor to compile, review and submit closeout documents including training documentation, O&M manuals, warranties, utility and insurance transfers, and final lien waivers and surety forms. This ensures a timely, frustration-free process for the building owner and users.

The Koch Hazard team will focus on continuous and consistent communication throughout the process to ensure a successful project.



# DESIGN TEAM COLLABORATION

	Contract Management	Project Management	Program Verification	Schematic Design	Design Development	Construction Documents	Construction Admin,	Post Construction
<b>KHA</b>								
<b>Engineers</b>								
	<ul style="list-style-type: none"> <li>Develop Contracts</li> <li>Team Meetings</li> <li>Scope Confirmed</li> <li>Schedule Developed</li> <li>Organize Consultants</li> </ul>	<ul style="list-style-type: none"> <li>Team Meetings</li> <li>Schedule Control</li> <li>Cost Control</li> <li>Work-plan</li> <li>Owner Interaction</li> </ul>	<ul style="list-style-type: none"> <li>Programming Meeting</li> <li>Review+ Develop DSU Facility Standards</li> <li>Site Evaluation</li> </ul>	<ul style="list-style-type: none"> <li>Design Meetings</li> <li>Floor Plan Options</li> <li>Exterior Concepts</li> <li>Systems Identified</li> <li>Budgeting</li> <li>Research Sustainability Opportunities</li> </ul>	<ul style="list-style-type: none"> <li>Detailed Design Meetings</li> <li>Systems Developed</li> <li>Design Completed</li> <li>Budgeting</li> <li>Schedule Confirmation</li> </ul>	<ul style="list-style-type: none"> <li>Contract Drawings</li> <li>Systems Completed</li> <li>Value Engineering</li> <li>Bidding Documents</li> <li>Budgeting</li> </ul>	<ul style="list-style-type: none"> <li>Construction Meetings</li> <li>Shop Drawings</li> <li>Clarification</li> <li>Site Visits</li> <li>Commissioning</li> </ul>	<ul style="list-style-type: none"> <li>Warranty Observation</li> </ul>

## QUALITY CONTROL

Our experience at Koch Hazard is that 99% of projects have budget limitations, and working within that constraint is a routine part of our process. Cost awareness is embedded in our design process from the outset. Our goal is to identify and resolve issues early, reducing risk and minimizing costly surprises during construction.

We maintain a rigorous quality assurance and quality control process that includes independent senior-level reviews of drawings and specifications at key milestones, as well as regular coordination with our engineering and specialty consultants. This layered review approach helps ensure clear, coordinated documents that are code-compliant, constructible, and aligned with the project budget.

By doing the work right the first time, we support predictable costs, fewer change orders, and a smoother construction process—protecting the City’s investment and helping deliver a successful project, on time and on budget.



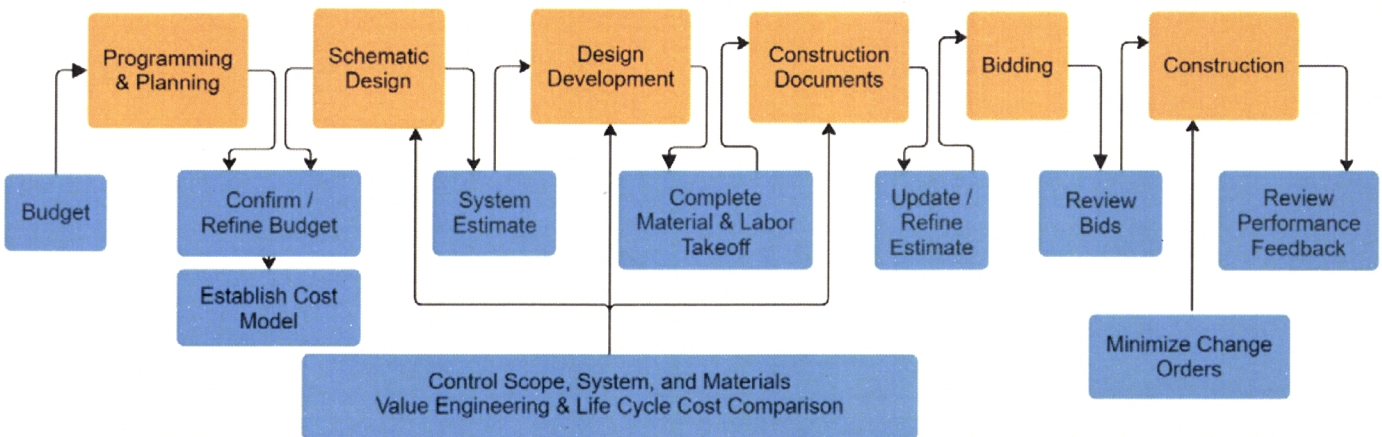
## COST CONTROLS

Our cost control efforts begin with the client’s budget and continue through construction. Through programming and planning, the **budget is confirmed** and an **initial cost model** is created based on the building type and historical cost data.

As detailed on the graphic below, during remaining design phases the initial cost model is adjusted based on consensus-based changes in design. Finally, a detailed materials take-off estimate is developed to give an **accurate picture of costs**. The estimate is then adjusted and refined during completion of the construction documents.

Our team will undertake cost control reviews on a continuous basis and communicate the results at certain milestones throughout the project. **Line-by-line estimate reviews** will occur at each phase of the work. This close coordination, combined with our firm’s design experience, enables us to effectively manage the project to **stay on budget and schedule**.

80% OF SIGNIFICANT COST DECISIONS ARE MADE IN THE FIRST 20% OF THE DESIGN PROCESS



## COST CONTROLS & BIDDING SUCCESS

Project	Bid Price	CO%	Year Complete
Nobles County - Worthington Library Renovation	\$1,101,000	7.2% (Due to Owner selected alternate)	2025
Rock Nobles County - Prairie Justice Center Renovation	\$196,000	5.1% (Due to Owner selected alternate)	2025
Beadle Hall Renovation - Dakota State University	\$4,020,000	1.49%	2025
Bon Homme High School Addition and Improvements	\$2,100,000	2.0%	2024
Dakota Dental New Office	\$5,900,000	-0.80%	2025
Bon Homme High School Addition and Improvements	\$2.1M	2.0%	2024
Tennis Center Addition	\$3.5M	-0.85%	2023
Heuther Family Match Point Addition	\$3,500,000	-0.7%	2022
Tea School District Bus Barn	\$1,700,000	0.7%	2022

## AVAILABILITY

At Koch Hazard Architects, our attention to detail involves more than designing great projects. We ensure that for any project we take on, we have the time and capacity to give your project the attention it deserves. We conduct a weekly internal scheduling and coordination meeting to review one week, one month and one quarter look aheads. This allows us to continuously monitor, reallocate and provide additional staffing as necessary to ensure great service to all our partners.

We are available to begin on this project immediately and allocate more than enough resources to guarantee a smooth, or even aggressive design schedule. At our first kick-off meeting for your project, we will create a joint work plan together. Koch Hazard Architects is familiar with this building and program type and we look forward to learning more about the unique needs and goals of The City of Marshall.

The Marshall Bandshell Project is a great fit for Koch Hazard Architects and our consultant teams. We care equally about great design and improving our communities, and this type of community offer an ideal opportunity to join these goals. To us, that means not only designing highly functional, great looking facilities, but also meeting financial and timing goals to make this project a successful, vibrant and enduring place.

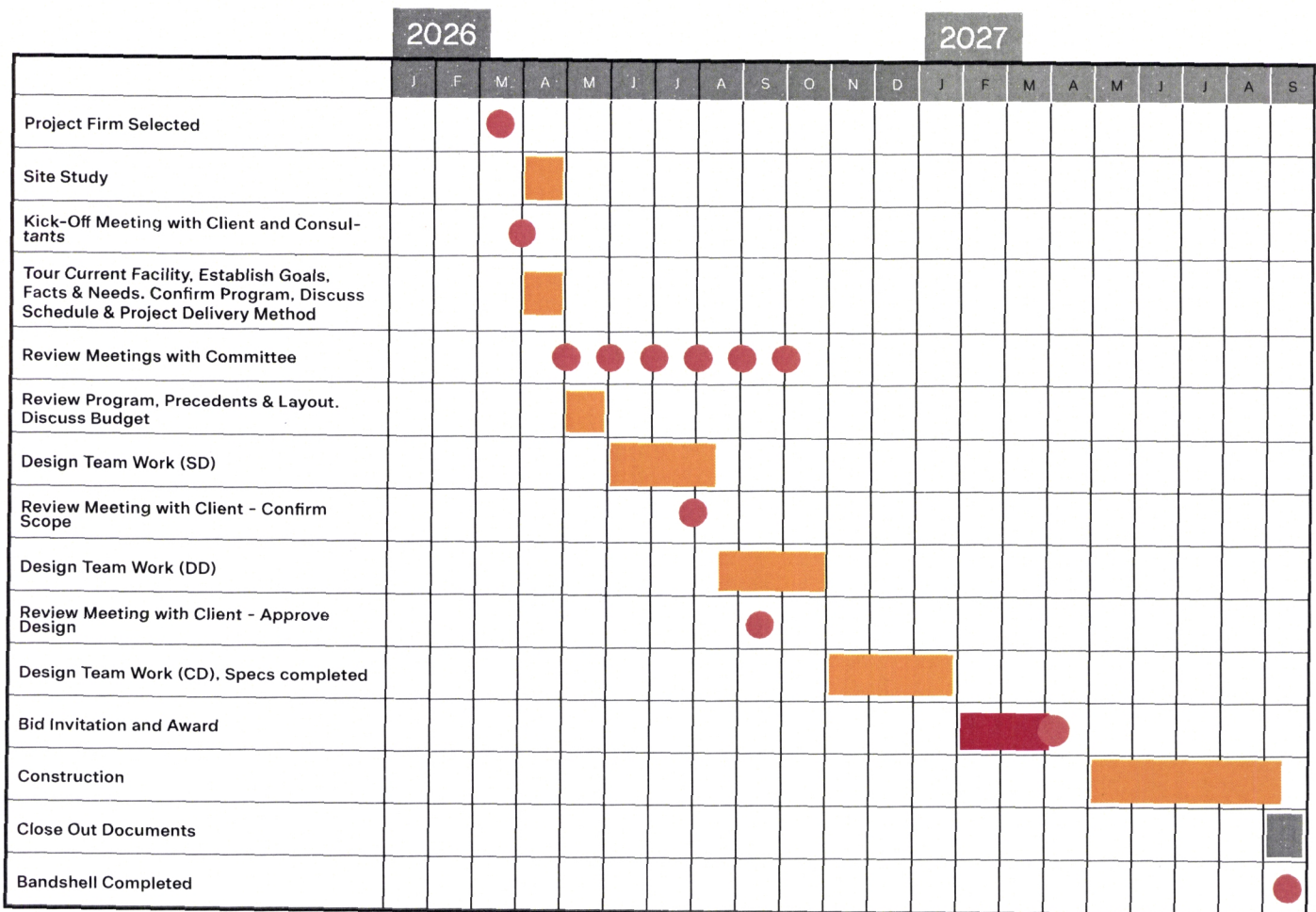
***We believe good design should be accessible to all.***

The entire design team will be involved in your project from start to finish, contract award date to the completion of the master plan, and beyond.

# SCHEDULE

Koch Hazard has a sound record for completing projects on time. Our success comes as a result of the firm's commitment to having highly qualified staff and using the latest technology available. We will provide the staffing and technical resources required to meet the schedule.

A well thought-out and realistic schedule is crucial in the successful performance of projects. The project is broken down into concrete steps to include time to complete, review times estimated, and interrelationships to other steps defined. With this information, the critical path is determined and a schedule set. Phases will be established to minimize disruptions and meet the desired timeline of project completion. Below is a preliminary schedule.



**GRAND OPENING JUNE 2028!**

## References:



### CITY LIGHT, POWER AND TRAFFIC BUILDING *Sioux Falls, SD*

A new consolidated facility for the Light & Power and Traffic departments. The building features a large vehicle bay, cold storage, central supply room, workshop and support spaces along with the office and meeting room suite.

*Completion fall 2026.*

Shannon VerHey P.E.  
Assistant City Engineer  
City of Sioux Falls  
shannon.verhey@siouxfalls.gov  
605.367.8620

### TEA HIGH SCHOOL ADDITION & RENOVATION *Tea, SD*

This project was a combination renovation/addition project for the existing High School. Included were an auditorium and PAC, flexible spaces and dedicated areas for science, music and other classrooms

*Completed in 2025*

Wayne Larsen  
Operations Manager  
Tea Area School District  
Wayne.Larsen@k12.sd.us  
605.498.2700 (option 5)

### VARIOUS RENOVATIONS, ADDITIONS AND NEW PROJECTS *Sioux Falls School District*

Koch Hazard has completed over 20 school district projects in the past 10 years, with many more over the last 40 years. Projects range from additions and renovations to brand new facilities.

Jeff Kreiter  
Operational Services Director  
Sioux Falls School District  
Jeffrey.Kreiter@k12.sd.us  
605.367.7965

### LENNOX BANDSHELL *City of Lennox, South Dakota*

This renovation project included structural reinforcement of the superstructure, a new stage surface, insulated cladding for the foundation walls, new lighting and repainting.

*Completed in 2025*

Nathan Vander Plaats, MPA  
City Administrator  
City of Lennox  
nvp@cityoflennoxsd.com  
605.647.2286



# 60+

**YEARS OF DESIGN EXCELLENCE**



# 100+

**REPEAT CLIENT PROJECTS**



# 75+

**AWARD-WINNING PROJECTS, THE MOST OF ANY SOUTH DAKOTA FIRM**

Koch Hazard is a local LEADER with community performance project EXPERTISE. Koch Hazard Architects brings to the table an incredible wealth of experience. We have worked on some of the largest and smallest projects (square footage-wise) and first-of-their-kind facilities in the state of South Dakota.

Everything we do focuses on listening to your stakeholders to achieve YOUR GOALS. Our approach provides an opportunity for everyone involved in the project to participate in defining program needs and goals. Our team will focus on continuous and consistent communication throughout the process to ensure a successful project. Bottom line, we are great listeners.

We have the BEST architectural graphics design team in the region. The ideas we foster during the design process are only as good as the graphic representations we produce to communicate those ideas. Better graphic representation translates to a smoother design and construction process, saving money and time, as well as making the experience more enjoyable for all parties involved.

Things may get tough, but we WILL be proactive in our communication with you. Every project has some sort of tension. Our team has a proven history of identifying and handling unique project parameters on a variety of projects, large and small. Collectively, our firms know that being proactive and getting ahead of the challenges before they become constraints is always the best path forward. We believe in picking up the phone when things get tough, gaining consensus and proceeding with a unified solution. Our team understands ALL FACETS of design needed for this project. The Koch Hazard team knows how to gather information, plan and design buildings that can serve multiple uses and users, while being affordable, durable and easily maintained. Koch Hazard is consistently being recognized for great design - we love to explore, dream and bring your vision to life.

***Together, with the City of Marshall,  
WE are the design team.  
We will make great things possible.***



Thank you for reviewing our proposal.  
Please contact Keith Thompson at (605) 782-8731 if you have any follow-up questions.  
We appreciate your consideration for this important project.