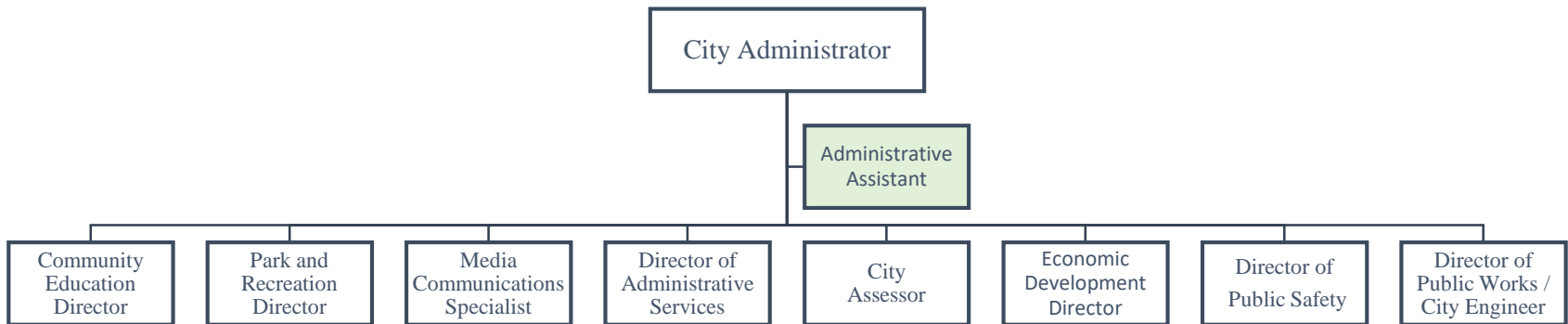


Organization Chart—Reporting to the City Administrator



Proposed structure

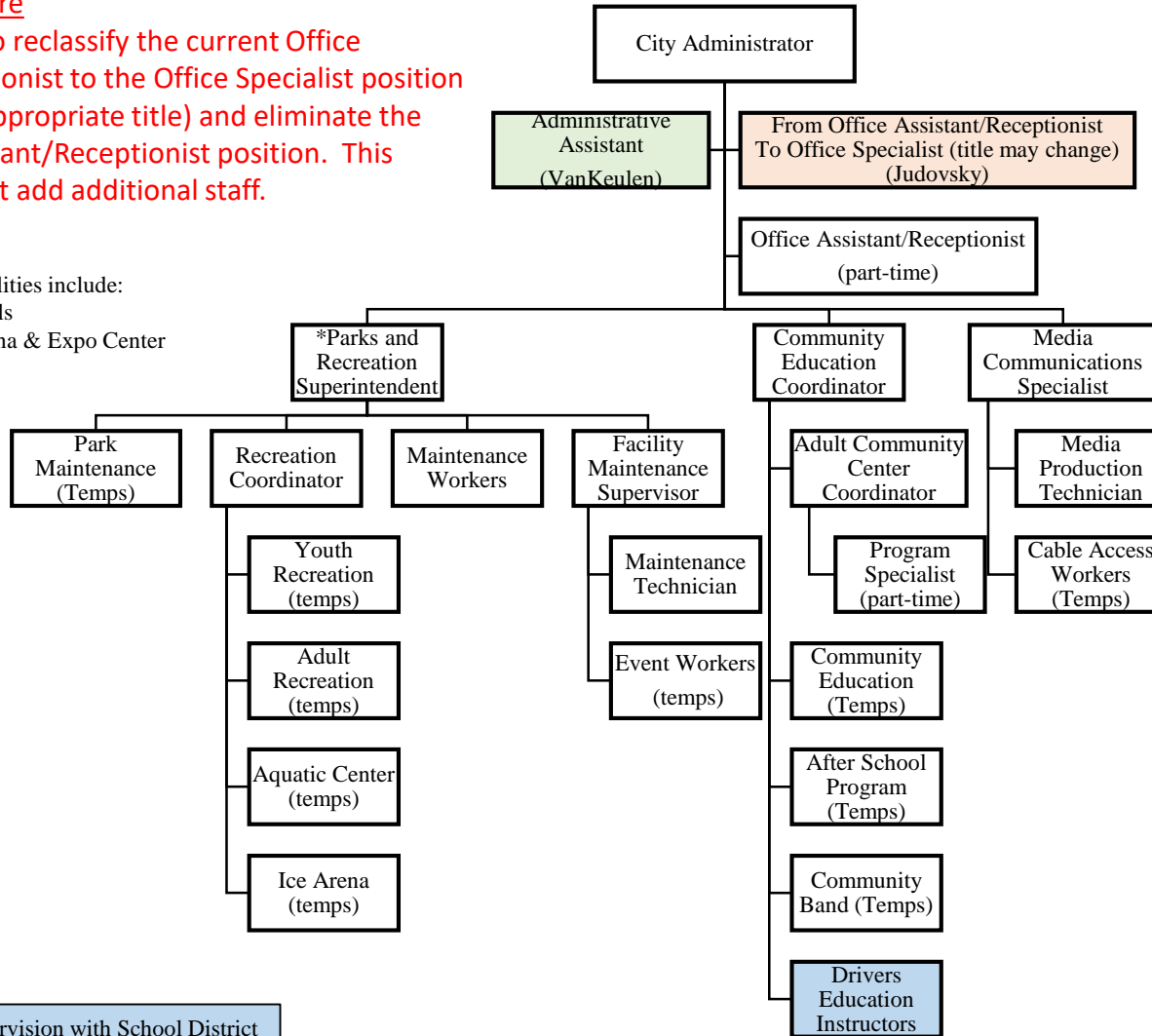
The proposal is to transfer the current Community Services Administrative Assistant to the Administration Division to provide a wider range of administrative supports across all divisions. This proposal does not add additional staff.

Organization Chart—COMMUNITY SERVICES

Proposed structure

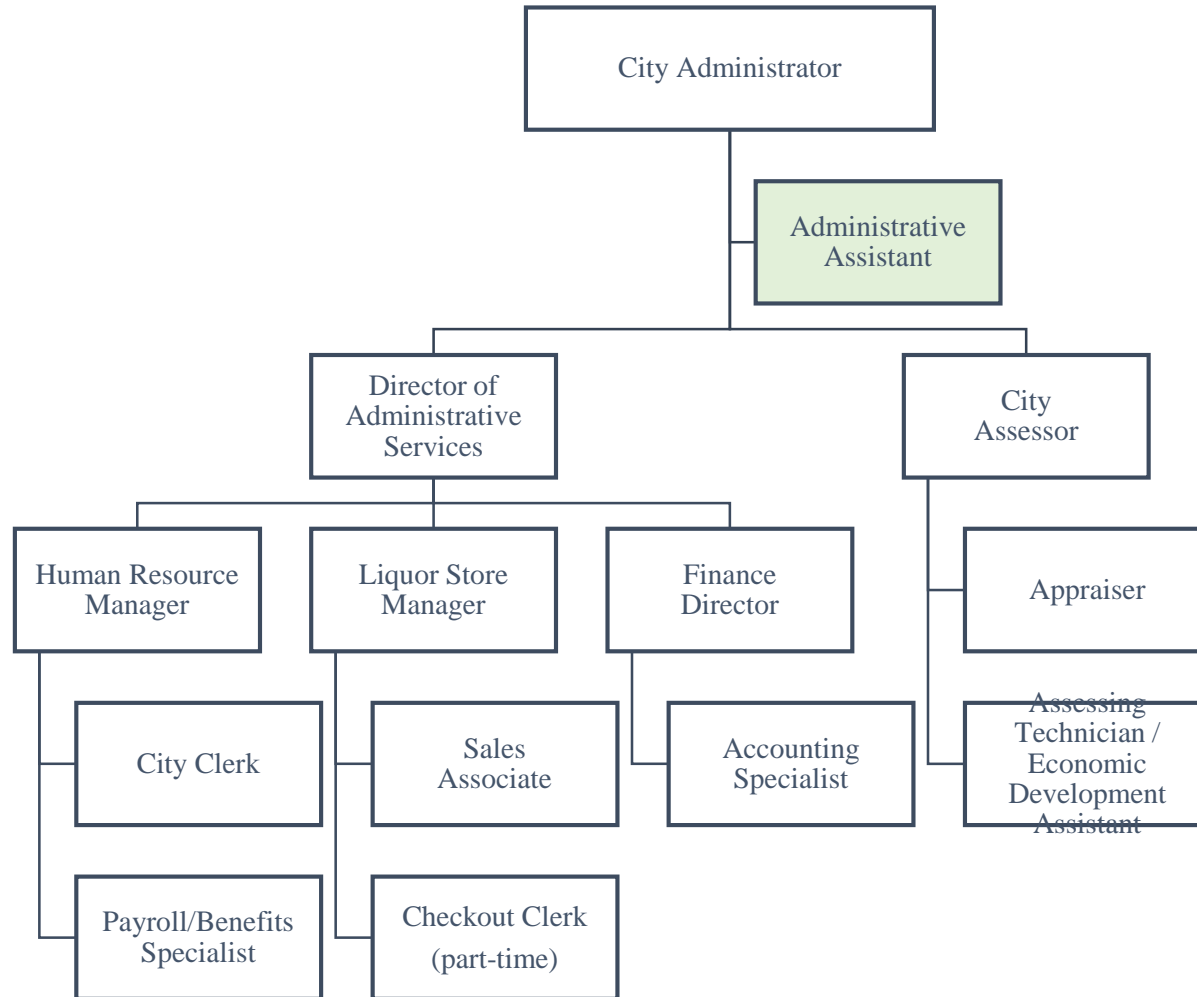
The proposal is to reclassify the current Office Assistant/Receptionist to the Office Specialist position (or other more appropriate title) and eliminate the MCS Office Assistant/Receptionist position. This proposal does not add additional staff.

*Responsible Facilities include:
 City Parks/Trails
 Red Baron Arena & Expo Center
 Aquatic Center

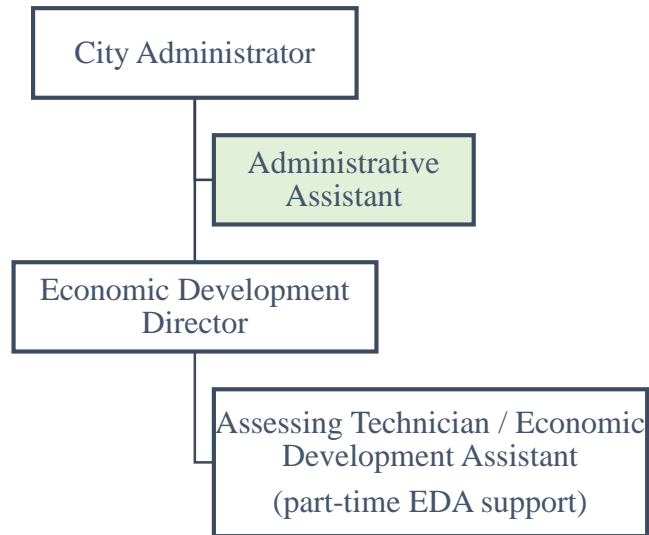


Denotes shared supervision with School District

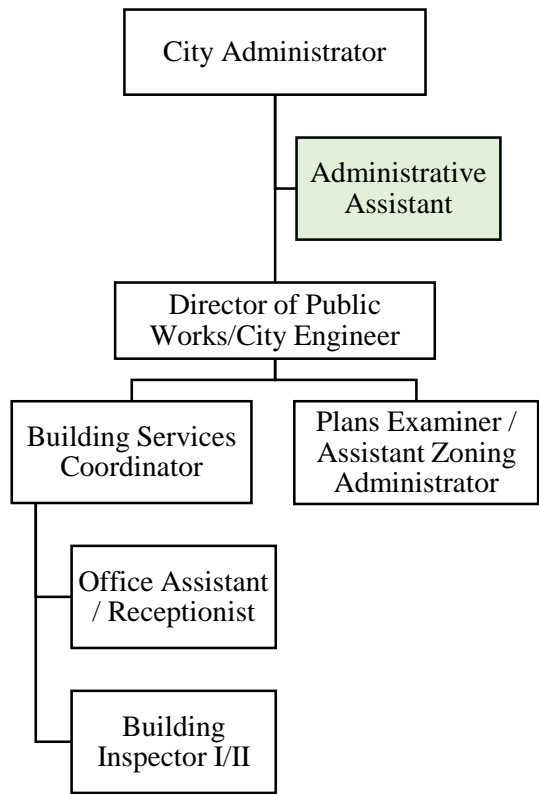
Organization Chart—ADMINISTRATION



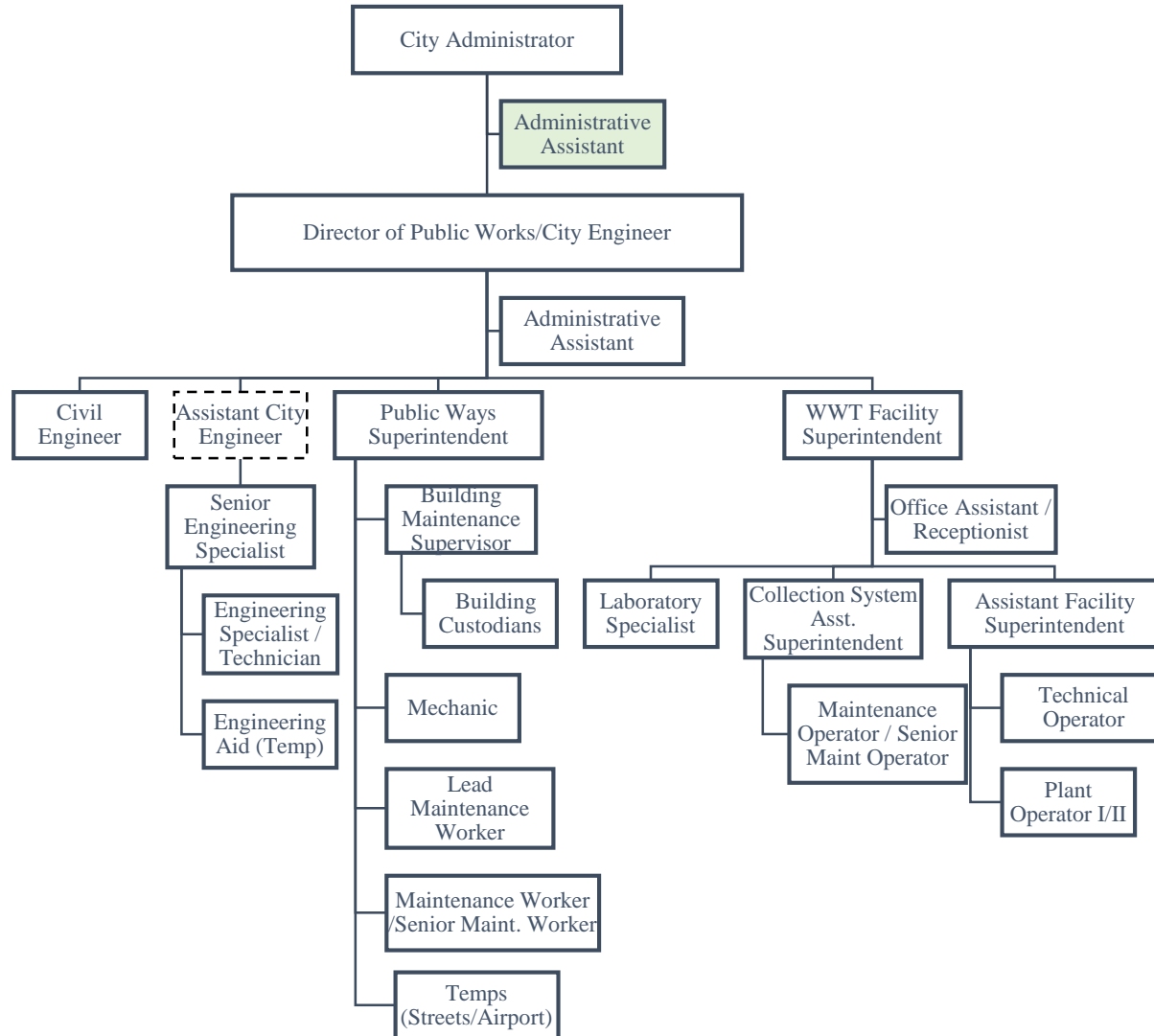
Organization Chart—ECONOMIC DEVELOPMENT



Organizational Chart—COMMUNITY PLANNING



Organizational Chart—PUBLIC WORKS



Organizational Chart—PUBLIC SAFETY

