

# STATE OF MINNESOTA

## CITY OF MARSHALL, MINNESOTA

### Construction Plans for Bituminous Overlays & Pedestrian Ramps within the City of Marshall

# INDEX

### Legend

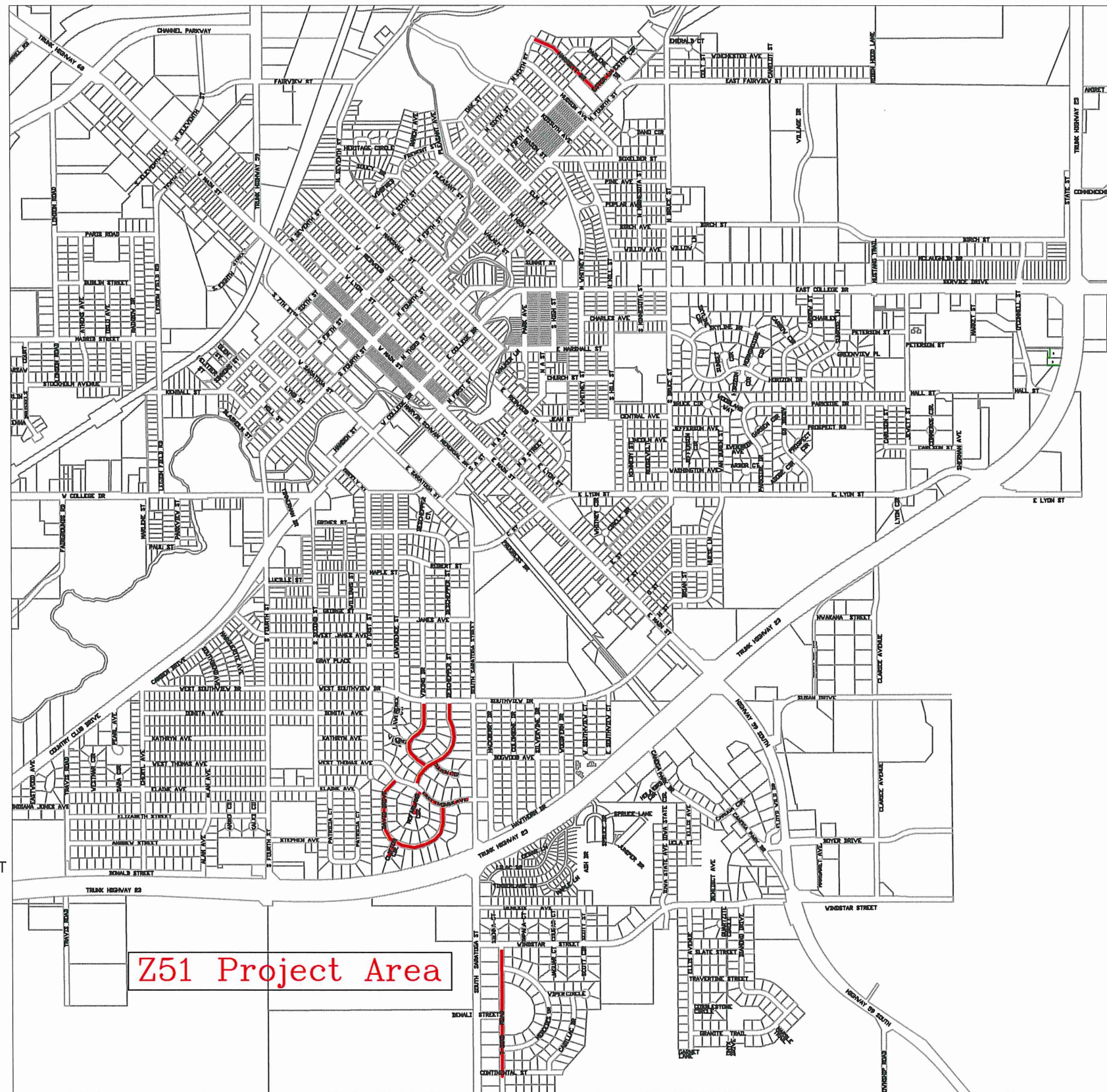
- ALIGNMENT STATIONS
- EXISTING GAS LINE
- EXISTING COMMUNICATION LINE
- EXISTING FIBER LINE
- EXISTING UNDERGROUND POWER
- EXISTING STREET LIGHT
- EXISTING CATCH BASIN
- EXISTING STORM MANHOLE
- EXISTING SANITARY MANHOLE
- EXISTING HYDRANT
- EXISTING WATER VALVE
- NEW CATCH BASIN
- NEW HYDRANT
- NEW WATER VALVE
- NEW SANITARY MANHOLE
- NEW STORM MANHOLE

### ELECTED OFFICIALS

ROBERT BYRNES, MAYOR  
 STEVEN MEISTER, CITY COUNCIL  
 JOHN DECRAMER, CITY COUNCIL  
 JAMES LOZINSKI, CITY COUNCIL  
 GLENN BAYERKÖHLER, CITY COUNCIL  
 CRAIG SCHAFER, CITY COUNCIL  
 RUSS LABAT, CITY COUNCIL

### CITY OF MARSHALL STAFF

SHARON HANSON, CITY ADMINISTRATOR  
 ANNETTE STORM, FINANCE DIRECTOR  
 GLENN OLSON, DIR. OF PUBLIC WORKS/CITY ENGINEER  
 JASON ANDERSON, ASSISTANT CITY ENGINEER  
 GEOFFREY STELTER, SENIOR ENGINEERING SPECIALIST  
 JASON ROKEH, ENGINEERING SPECIALIST  
 GREGG SWANSON, ENGINEERING SPECIALIST  
 JERRED LEE, ENGINEERING SPECIALIST  
 LONA RAE KONOLD, PUBLIC WORKS ADMIN. ASSISTANT  
 ROBERT VANMOER, WASTEWATER TREATMENT SUPERINTENDENT



### SHEET NO. DESCRIPTION

1. TITLE SHEET
2. ESTIMATED QUANTITY SHEET
3. PROJECT QUANTITY TABLES
4. CONSTRUCTION NOTES SHEETS
5. DETAIL SHEETS
- 6-13. ADA PLAN SHEETS
- 14-23. MNDOT STANDARD PLAN SHEETS

### SPECIFICATION REFERENCE

THE 2018 EDITION OF THE MINNESOTA DEPARTMENT OF TRANSPORTATION "STANDARD SPECIFICATIONS FOR CONSTRUCTION" SHALL GOVERN.

ALL TRAFFIC CONTROL DEVICES SHALL CONFORM TO THE LATEST EDITION OF THE MINNESOTA MANUAL ON UNIFORM TRAFFIC CONTROL DEVICES, INCLUDING THE LATEST FIELD MANUAL FOR TEMPORARY TRAFFIC CONTROL ZONE LAYOUTS

THE CITY OF MARSHALL STANDARD SPECIFICATIONS AND SPECIAL PROVISIONS

I HEREBY CERTIFY THAT THIS PLAN WAS PREPARED BY ME OR UNDER MY DIRECT SUPERVISION AND THAT I AM A DULY LICENSED PROFESSIONAL ENGINEER UNDER THE LAWS OF THE STATE OF MINNESOTA.

APPROVED: CITY ENGINEER, MARSHALL MINNESOTA  
 DATE \_\_\_\_\_  
 REG NO 41557

### SCALES

PLAN 1"=40'  
 PROFILE NA  
 INDEX MAP 1"=100'  
 GENERAL LAYOUT 1"=40'

NOT TO SCALE

REVISIONS	DATE	DRAWN BY
		G.J.S.