

**Total C St.-Southview Trail - Cost Estimate**

Bid Item	Quantity	Unit Price	Extended Price
12" PVC Pipe Sewer (LF)	40	\$80.00	\$3,200.00
4" Concrete Walk (SF)	27,830	\$8.00	\$222,640.00
Turf Establishment (LS)	1	\$2,500.00	\$2,500.00
Rapid Stabilization Method 3 (MGAL)	1	\$750.00	\$750.00
Construction Total			\$229,090.00
Contingency (10%)			\$22,909.00
Construction + Contingency			\$251,999.00
Engineering (16%)			\$40,319.84
<b>Grand Total</b>			<b>\$292,318.84</b>

Tie-In to Existing Sidewalk

NOT TO SCALE



CITY ENGINEERS OFFICE  
 344 WEST MAIN STREET  
 MARSHALL, MINNESOTA  
 56258

Layout - Alternate 2

C Street-Southview Trail

I HEREBY CERTIFY THAT THIS PLAN, SPECIFICATION OR REPORT WAS PREPARED BY ME OR UNDER MY DIRECT SUPERVISION AND THAT I AM A DULY LICENSED ENGINEER UNDER THE LAWS OF THE STATE OF MINNESOTA.

DATE \_\_\_\_\_ LICENSE NO. 53322

DATE  
 10/14/2020

DESIGNED BY  
 DRAWN BY JLD  
 REVISIONS:

PROJECT NO.

SHEET NO.  
 03 OF 05

**C St.-Southview Trail Mainline - Cost Estimate**

Bid Item	Quantity	Unit Price	Extended Price
4" Concrete Walk (SF)	24,180	\$8.00	\$193,440.00
Turf Establishment (LS)	1	\$2,125.00	\$2,125.00
Rapid Stabilization Method 3 (MGAL)	1	\$637.50	\$637.50
Construction Total			\$196,202.50
Contingency (10%)			\$19,620.25
Construction + Contingency			\$215,822.75
Engineering (16%)			\$34,531.64
<b>Grand Total</b>			<b>\$250,354.39</b>

Tie-In to Existing Sidewalk

**School Trail Leg - Cost Estimate**

Bid Item	Quantity	Unit Price	Extended Price
12" PVC Pipe Sewer (LF)	40	\$80.00	\$3,200.00
4" Concrete Walk (SF)	3,650	\$8.00	\$29,200.00
Turf Establishment (LS)	1	\$375.00	\$375.00
Rapid Stabilization Method 3 (MGAL)	1	\$112.50	\$112.50
Construction Total			\$32,887.50
Contingency (10%)			\$3,288.75
Construction + Contingency			\$36,176.25
Engineering (16%)			\$5,788.20
<b>Grand Total</b>			<b>\$41,964.45</b>

Layout - Alternate 2

C Street-Southview Trail

I HEREBY CERTIFY THAT THIS PLAN, SPECIFICATION OR REPORT WAS PREPARED BY ME OR UNDER MY DIRECT SUPERVISION AND THAT I AM A DULY LICENSED ENGINEER UNDER THE LAWS OF THE STATE OF MINNESOTA.

DATE \_\_\_\_\_ LICENSE NO. 53322

DATE  
10/14/2020

PROJECT NO.

DESIGNED BY  
DRAWN BY JLD  
REVISIONS:

SHEET NO.

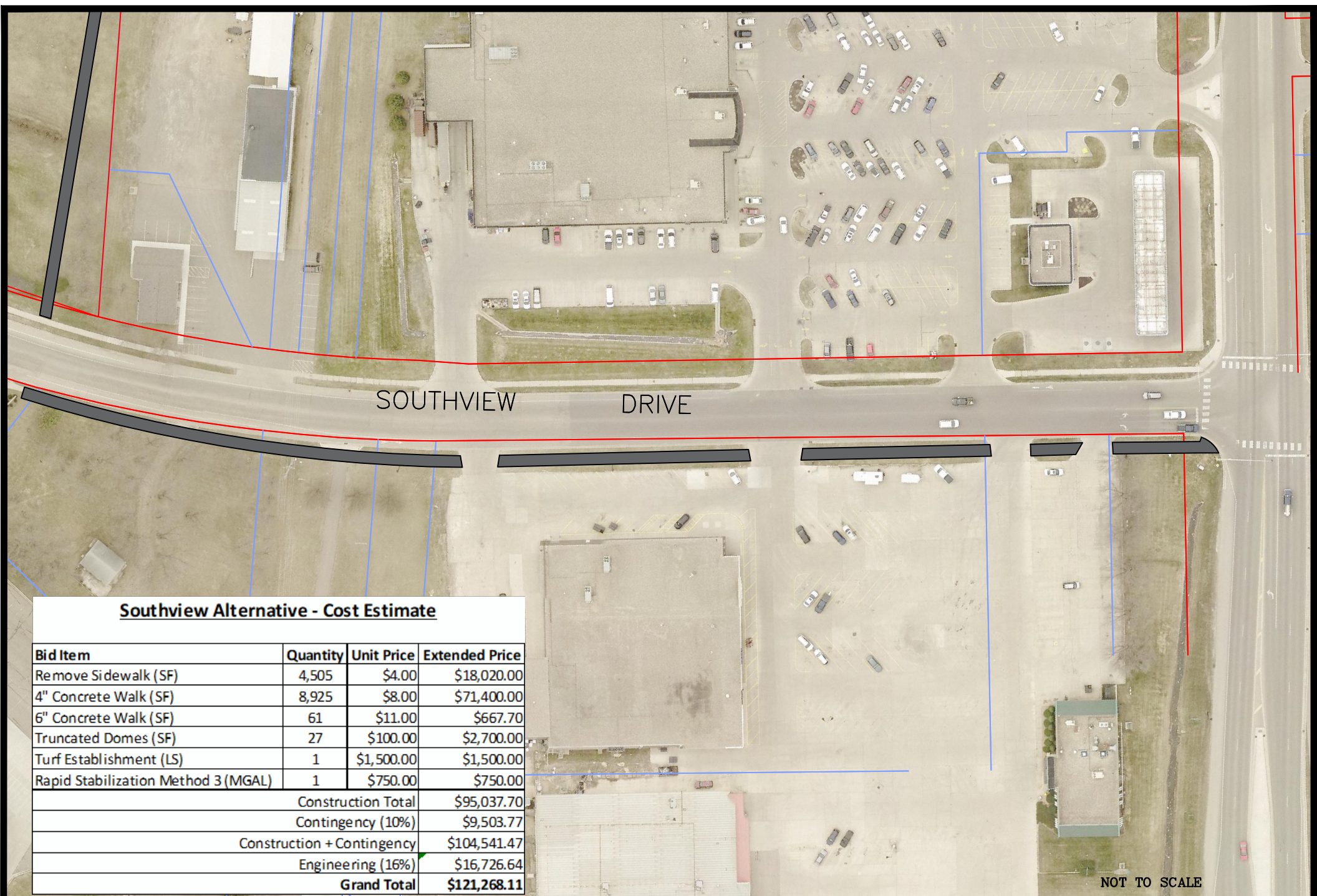
04 OF 05



CITY ENGINEERS OFFICE  
344 WEST MAIN STREET  
MARSHALL, MINNESOTA  
56258

MARSHALL

NOT TO SCALE



SOUTHVIEW DRIVE

**Southview Alternative - Cost Estimate**

Bid Item	Quantity	Unit Price	Extended Price
Remove Sidewalk (SF)	4,505	\$4.00	\$18,020.00
4" Concrete Walk (SF)	8,925	\$8.00	\$71,400.00
6" Concrete Walk (SF)	61	\$11.00	\$667.70
Truncated Domes (SF)	27	\$100.00	\$2,700.00
Turf Establishment (LS)	1	\$1,500.00	\$1,500.00
Rapid Stabilization Method 3 (MGAL)	1	\$750.00	\$750.00
Construction Total			\$95,037.70
Contingency (10%)			\$9,503.77
Construction + Contingency			\$104,541.47
Engineering (16%)			\$16,726.64
<b>Grand Total</b>			<b>\$121,268.11</b>

NOT TO SCALE



CITY ENGINEERS OFFICE  
 344 WEST MAIN STREET  
 MARSHALL, MINNESOTA  
 56258

Layout – Southview Alternative

C Street–Southview Trail

I HEREBY CERTIFY THAT THIS PLAN, SPECIFICATION OR REPORT WAS PREPARED BY ME OR UNDER MY DIRECT SUPERVISION AND THAT I AM A DULY LICENSED ENGINEER UNDER THE LAWS OF THE STATE OF MINNESOTA.

DATE \_\_\_\_\_ LICENSE NO. 53322

DATE  
10/14/2020

DESIGNED BY  
 DRAWN BY JLD  
 REVISIONS:

PROJECT NO.

SHEET NO.  
05 OF 05