



CITY ENGINEERS OFFICE
 344 WEST MAIN STREET
 MARSHALL, MINNESOTA
 56258

112.14 TOTAL ACRES ±	DATE 08/13/20
Farm Lease Parcel # 5	SHEET NO. 1 OF 1

U.S.HWY 59



PARCEL 6
82.27 ACRES ±

Erie Road

Not To Scale



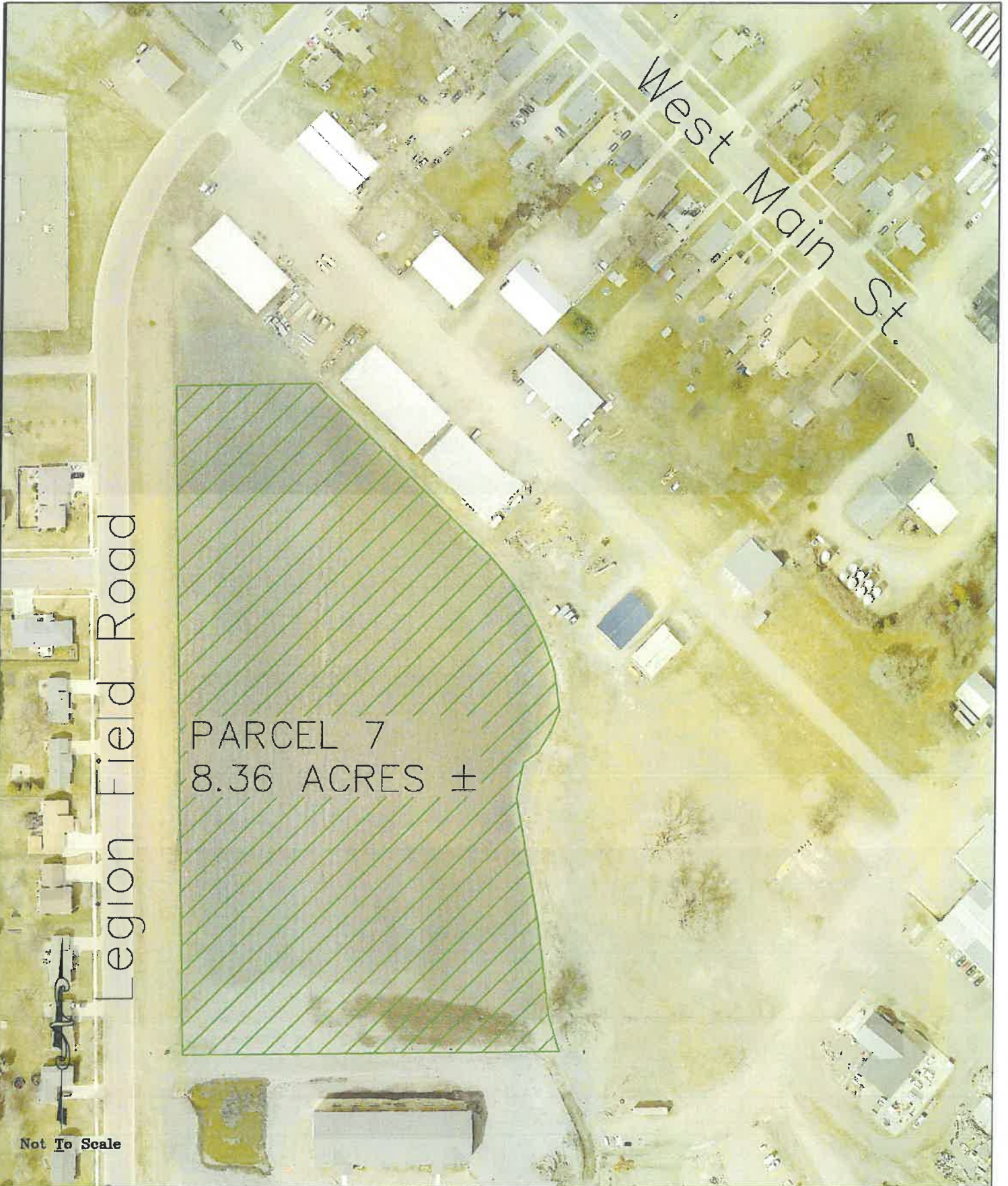
CITY ENGINEERS OFFICE
344 WEST MAIN STREET
MARSHALL, MINNESOTA
56258

82.27 TOTAL ACRES ±

DATE
08/13/20

Farm Lease
Parcel # 6

SHEET NO.
1 OF 1



Legion Field Road

West Main St.

PARCEL 7
8.36 ACRES ±

Not To Scale



CITY ENGINEERS OFFICE
344 WEST MAIN STREET
MARSHALL, MINNESOTA
56258

8.36 TOTAL ACRES ±

DATE
08/13/20

Farm Lease
Parcel # 7

SHEET NO.
1 OF 1



Channel Parkway

London Road

PARCEL 8
29.72 ACRES ±



Not To Scale



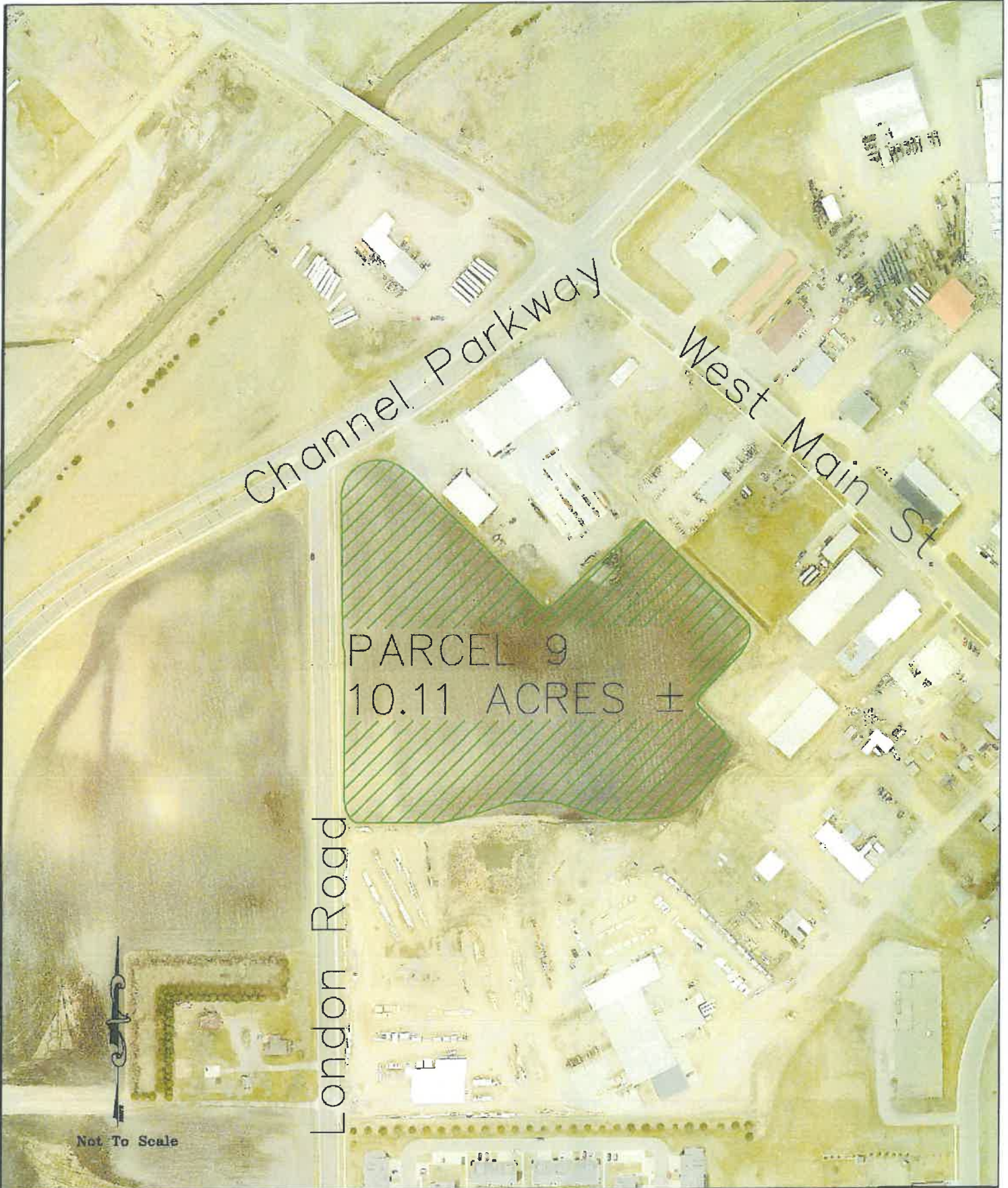
CITY ENGINEERS OFFICE
344 WEST MAIN STREET
MARSHALL, MINNESOTA
56258

29.72 TOTAL ACRES ±

DATE
08/13/20

Farm Lease
Parcel # 8

SHEET NO.
1 OF 1



Channel Parkway

West Main St.

London Road

PARCEL 9
10.11 ACRES ±

Not To Scale



CITY ENGINEERS OFFICE
344 WEST MAIN STREET
MARSHALL, MINNESOTA
56258

10.11 TOTAL ACRES ±

DATE
08/13/20

Farm Lease
Parcel # 9

SHEET NO.
1 OF 1