

# MARSHALL SRE BUILDING



# MARSHALL SRE BUILDING

## PROJECT OVERVIEW

- **7,400 SF Snow Removal Equipment Facility**
- **3 Truck Fleet Bays**
- **Office Space**
- **Conference Room**
- **2 Restrooms**
- **Utility Room**



# MARSHALL SRE BUILDING

## PROJECT BACKGROUND

- **Pre-Design Study & Public Involvement in 2022**
- **Final Design in 2022-2023**
- **Received Bids in April 2023**
- **\$4,346,000 bid from Sussner Construction (only bid)**
- **Over Budget: City did not award contract**



# MARSHALL SRE BUILDING

## Re-Bid Strategy

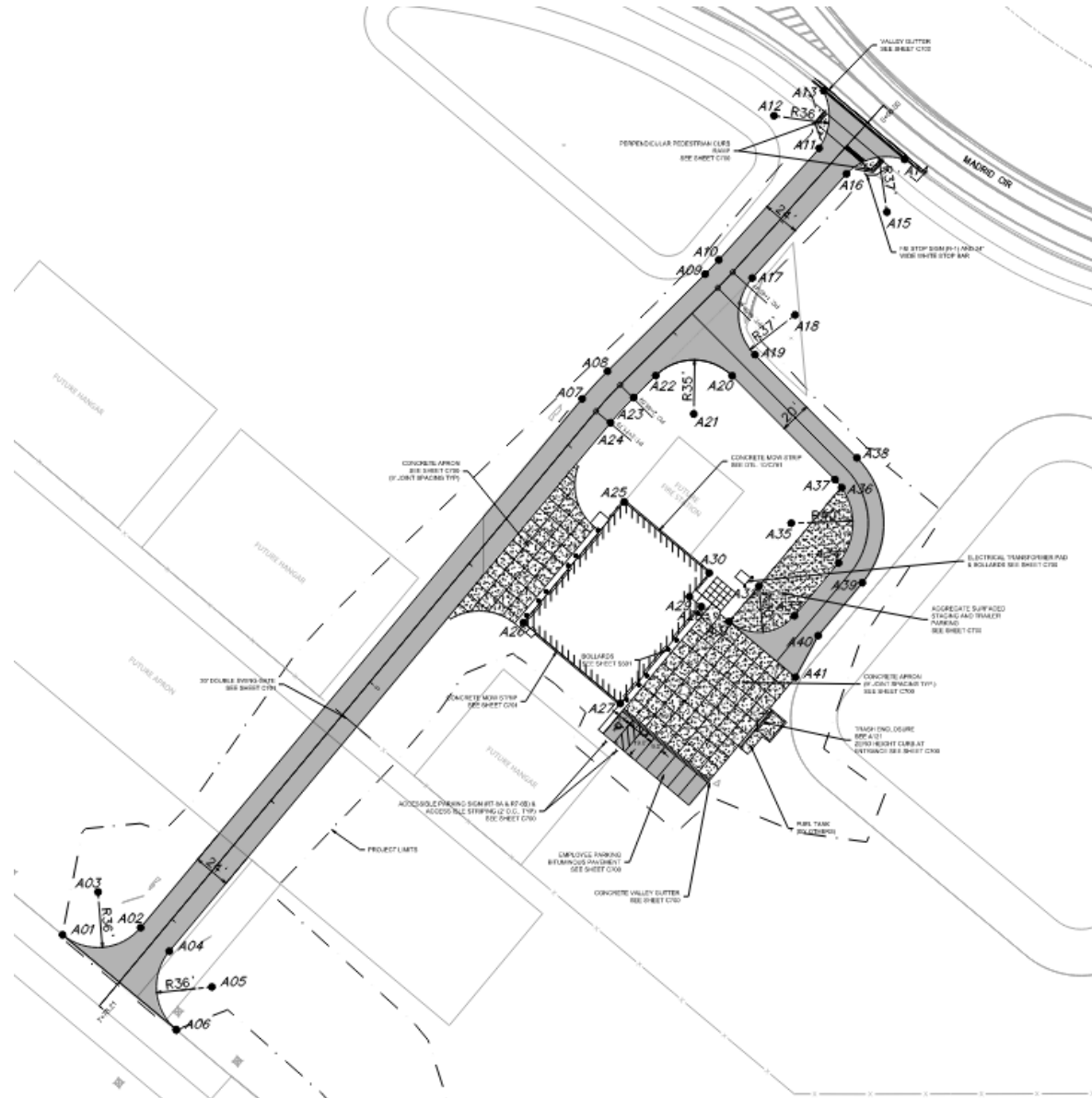
- **Bid Early (January)**
- **Flexible Construction Schedule (2025 Completion)**
- **Design changes to reduce costs**
  - **Foundation Stem Wall**
  - **Wall Panels**
  - **Roof Panels**
  - **Partial Mezzanine Removal**
  - **Perimeter Masonry Walls**
  - **Landscaping materials, plantings, furnishings and patio concrete included in a single alternate**
  - **Floor Slabs**
  - **Storm Sewer**
  - **Pavements**
  - **Gate**





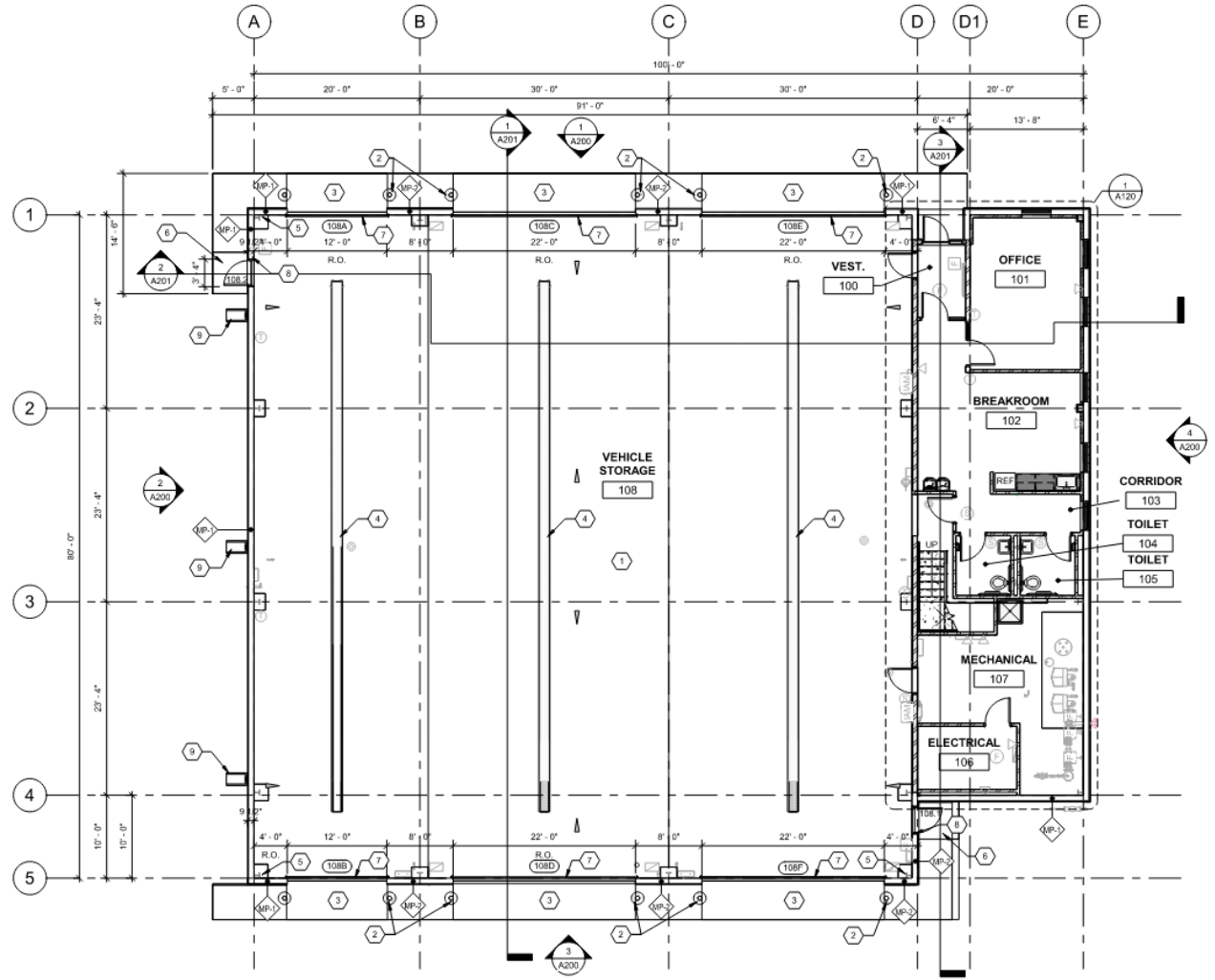
# MARSHALL SRE BUILDING

## → Site Layout Plan



# MARSHALL SRE BUILDING

## → Building Images & Plan



1 FLOOR PLAN - MAIN LEVEL  
A100 1/8" = 1'-0"



# MARSHALL SRE BUILDING

## → FUNDING

→ 22.83% - FAA AIP

→ 22.05% - FAA AIG (BIL)

→ 35.09% - State

→ 20.03% - City

## → CONSTRUCTION BUDGET: \$3,765,000

→ \$2,940,000 - Building Construction

→ \$825,000 - Site Work / Utilities



# MARSHALL SRE BUILDING

## → NEW ESTIMATE

→ **LOW: \$3,345,071**

→ **AVG: \$3,521,127**

→ **HIGH: \$3,697,184**

Marshall SRE Building  
Opinion of Probable Costs  
TKDA  
12/5/2023



Division	Description	Low	Average	High
1	General Conditions	\$179,265	\$188,700	\$198,135
2	Existing Conditions	\$0	\$0	\$0
3	Concrete	\$179,265	\$188,700	\$198,135
4	Masonry	\$0	\$0	\$0
5	Steel	\$35,853	\$37,740	\$39,627
6	Woods, Plastics, Composites	\$71,706	\$75,480	\$79,254
7	Thermal & Moisture Protection	\$215,118	\$226,440	\$237,762
8	Openings	\$179,265	\$188,700	\$198,135
9	Finishes	\$143,412	\$150,960	\$158,508
10	Specialties	\$21,512	\$22,644	\$23,776
11	Equipment	\$0	\$0	\$0
12	Furnishings	\$0	\$0	\$0
13	Special Construction	\$752,913	\$792,540	\$832,167
21	Fire Protection	\$43,024	\$45,288	\$47,552
22	Plumbing	\$86,047	\$90,576	\$95,105
23	HVAC	\$358,530	\$377,400	\$396,270
26	Electrical	\$215,118	\$226,440	\$237,762
27	Low Voltage	\$21,512	\$22,644	\$23,776
28	Electronic Safety & Security	\$28,682	\$30,192	\$31,702
31	Earthwork	\$143,412	\$150,960	\$158,508
32	Exterior Improvements	\$215,118	\$226,440	\$237,762
33	Utilities	\$107,559	\$113,220	\$118,881
	<b>Sub-Total</b>	<b>\$2,997,311</b>	<b>\$3,155,064</b>	<b>\$3,312,817</b>
	Insurance & Bonds	\$65,941	\$69,411	\$72,882
	Contractor Fee	\$122,530	\$128,979	\$135,428
	Contingency	\$159,289	\$167,673	\$176,056
	<b>Total</b>	<b>\$3,345,071</b>	<b>\$3,521,127</b>	<b>\$3,697,184</b>

