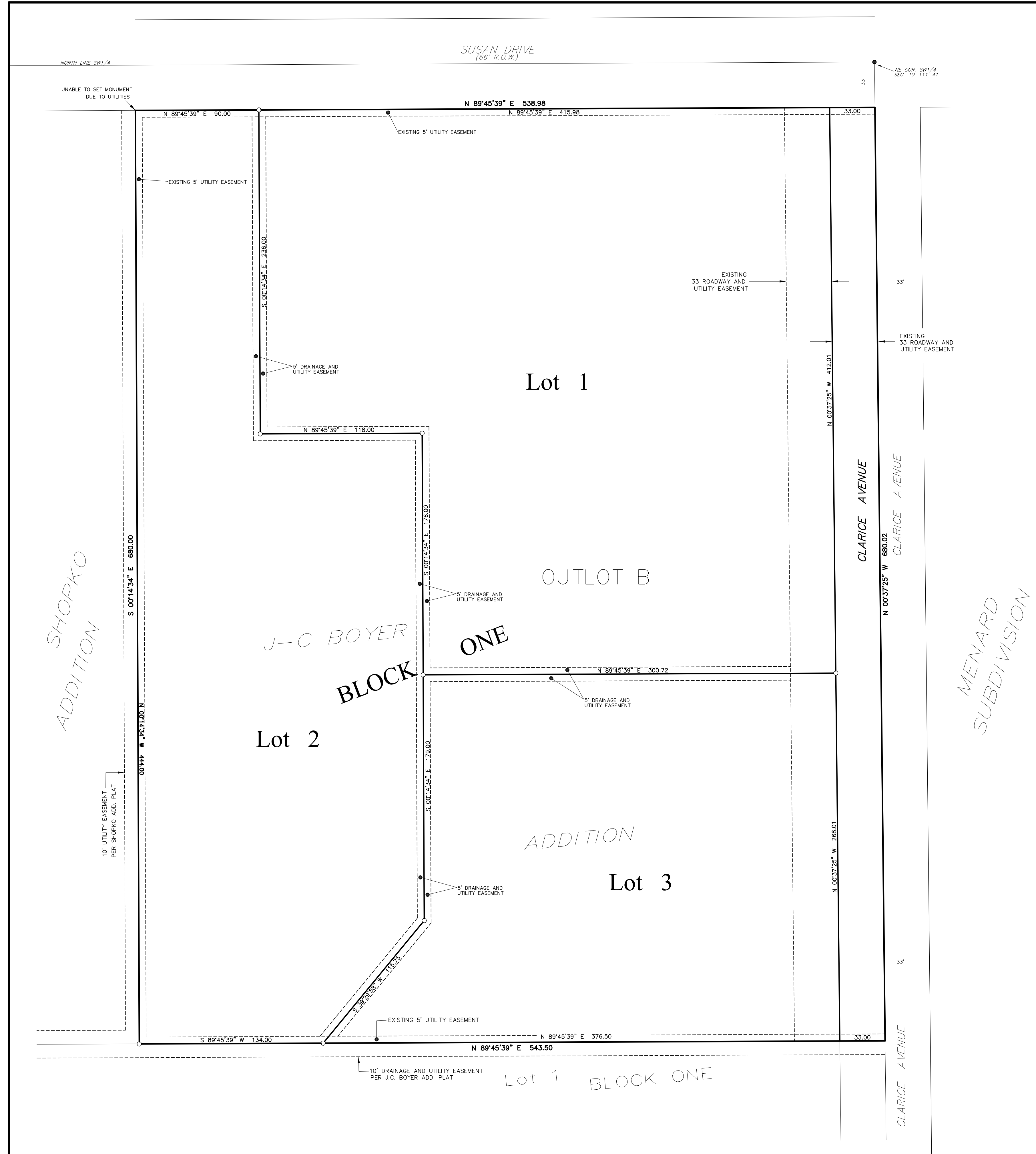


# STONE MEADOW



**KNOW ALL PEOPLE BY THESE PRESENTS:** That Paul E. Stoneberg and Joanne B. Stoneberg, Trustees, and Successor Trustees, of the Paul E. Stoneberg Trust Agreement dated July 3, 2008, fee owner of the following described property:

Outlot B of J-C Boyer Addition to the City of Marshall, Lyon County, Minnesota.

Have caused the same to be surveyed and platted as STONE MEADOW, and do hereby donate and dedicate to the public for public use forever the avenue and easements as shown on this plat.

**Paul E. Stoneberg Trust Agreement dated July 3, 2008**

by \_\_\_\_\_ by \_\_\_\_\_  
 Paul E. Stoneberg, Trustee Joanne B. Stoneberg, Trustee

**STATE OF MINNESOTA  
 COUNTY OF LYON**

The foregoing instrument was acknowledged before me on this \_\_\_\_\_ day of \_\_\_\_\_, 20\_\_\_\_, by Paul E. Stoneberg and Joanne B. Stoneberg, Trustees, and Successor Trustees, of the Paul E. Stoneberg Trust Agreement dated July 3, 2008.

Notary Public,  
 My Commission Expires \_\_\_\_\_

**SURVEYOR'S CERTIFICATE**

I hereby certify that I have surveyed and platted the property described on this plat as STONE MEADOW, that this plat is a correct representation of said survey; that all distances are correctly shown on the plat; that all monuments have been correctly placed in the ground as shown on the plat; that the outside boundary lines are correctly designated on the plat and that there are no wetlands or public highways to be designated on this plat other than as shown.

\_\_\_\_\_  
 Daniel L. Bueltel  
 Minnesota License Number 43844

**STATE OF MINNESOTA  
 COUNTY OF LYON**

The Surveyor's Certificate was acknowledged before me on this \_\_\_\_\_ day of \_\_\_\_\_, 20\_\_\_\_, by Daniel L. Bueltel, a licensed land surveyor.

\_\_\_\_\_  
 Notary Public,  
 My Commission Expires \_\_\_\_\_

**CITY COUNCIL**

This plat of STONE MEADOW was approved and accepted, by resolution, at a meeting of the City Council of Marshall, Minnesota, held this \_\_\_\_\_ day of \_\_\_\_\_, 20\_\_\_\_.

\_\_\_\_\_  
 Mayor City Clerk

**OFFICE OF THE LYON COUNTY AUDITOR/TREASURER**

I hereby certify that the tax for the year 20\_\_\_\_ on the land described in the foregoing instrument and as shown on the annexed plat has been paid in full.

\_\_\_\_\_  
 Auditor/Treasurer, Lyon County

**OFFICE OF THE LYON COUNTY RECORDER**

I hereby certify that this instrument was filed and microfilmed in this office for record on the \_\_\_\_\_ day of \_\_\_\_\_, 20\_\_\_\_, at \_\_\_\_\_ o'clock \_\_\_\_\_ m., and was duly recorded as document number \_\_\_\_\_, envelope number \_\_\_\_\_.

\_\_\_\_\_  
 Recorder, Lyon County

