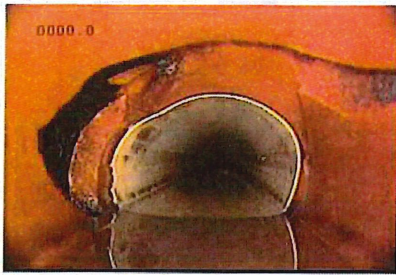


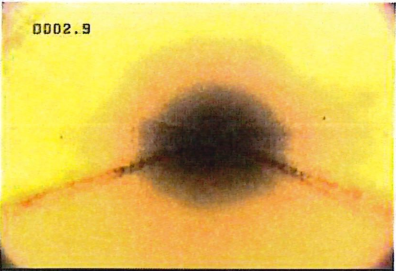
 MARSHALL	ENGINEERING DEPARTMENT 344 WEST MAIN STREET MARSHALL, MINNESOTA 56258	PLAN & PROFILE VIKING ADDITION SEWER REPAIR PROJECT # WW-014	I HEREBY CERTIFY THAT THIS PLAN, SPECIFICATION OR REPORT WAS PREPARED BY ME OR UNDER MY DIRECT SUPERVISION AND THAT I AM A DULY LICENSED ENGINEER UNDER THE LAWS OF THE STATE OF MINNESOTA. <div style="text-align: right;"> DATE: <u>3-23-26</u> LICENSE NO. <u>53322</u> </div>	DATE: 01/15/2026 SHEET NO. 2 OF 4
---------------------	---	---	---	--



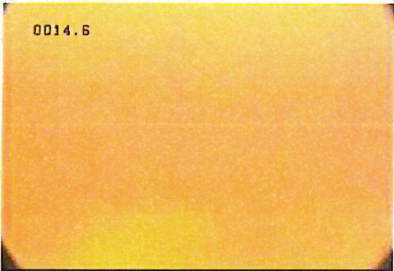
BI - Begin Inspection @ 0.0 ft. mh 3 is poor



H - Hole @ 2.4 ft. large hole in pipe, can see storm sewer line in hole



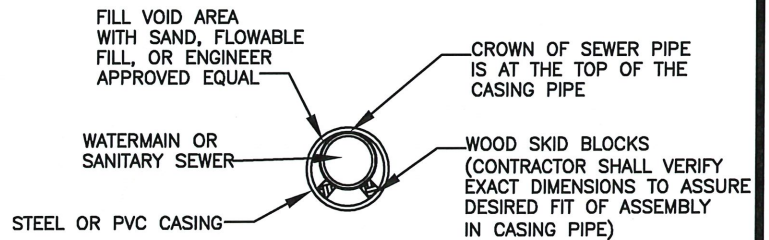
PC - Pipe Change @ 2.5 ft. pipe change to PVC



SA - Survey Abandoned @ 14.6 ft. cant see

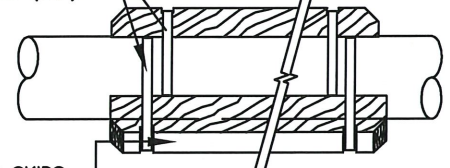


CONTRACTOR SHALL INSTALL 10' OF STEEL CASING THROUGH EXISTING 54" STORM SEWER. BID SHALL BE A LUMP SUM BID TO INCLUDE ALL PIPE LENGTHS, LABOR, REMOVAL, AND INSTALLATION. CONTRACTOR SHALL SUPPORT 8" PVC PIPE THROUGH THE CASING AND FILL VOIDS WITH FLOWABLE FILL TO KEEP 8" PIPE FROM SETTLING. REMOVE 15' OF 12" RCP CATCH BASIN LEAD AND INSTALL 12" SDR 35 PVC PIPE WITH A APPROVED DISSIMILAR CONNECTION. REMOVE 15' OF 15" RCP CATCH BASIN LEAD AND INSTALL 15" SDR 35 PVC PIPE WITH A APPROVED DISSIMILAR CONNECTION. INSTALL NEW CASING THROUGH STORM SEWER WITH 8" PVC PIPE, GROUT EXISTING STORM LINE AFTER INSTALLATION.



TYPICAL SECTION

STEEL BANDING TIES (TYP)



PLACE 2x2 SKIDS ALONG PIPE, STAGGER PLACEMENT TO PROVIDE BAND CLEARANCE

PIPE SUPPORT IN CASING, WOOD SKIDS NOT TO SCALE

