

# State Of Minnesota City of Marshall, Minnesota Project Number Z80

Construction Plans for Sanitary Sewer, Curb and Gutter, Bituminous Surfacing, and Misc. Work for

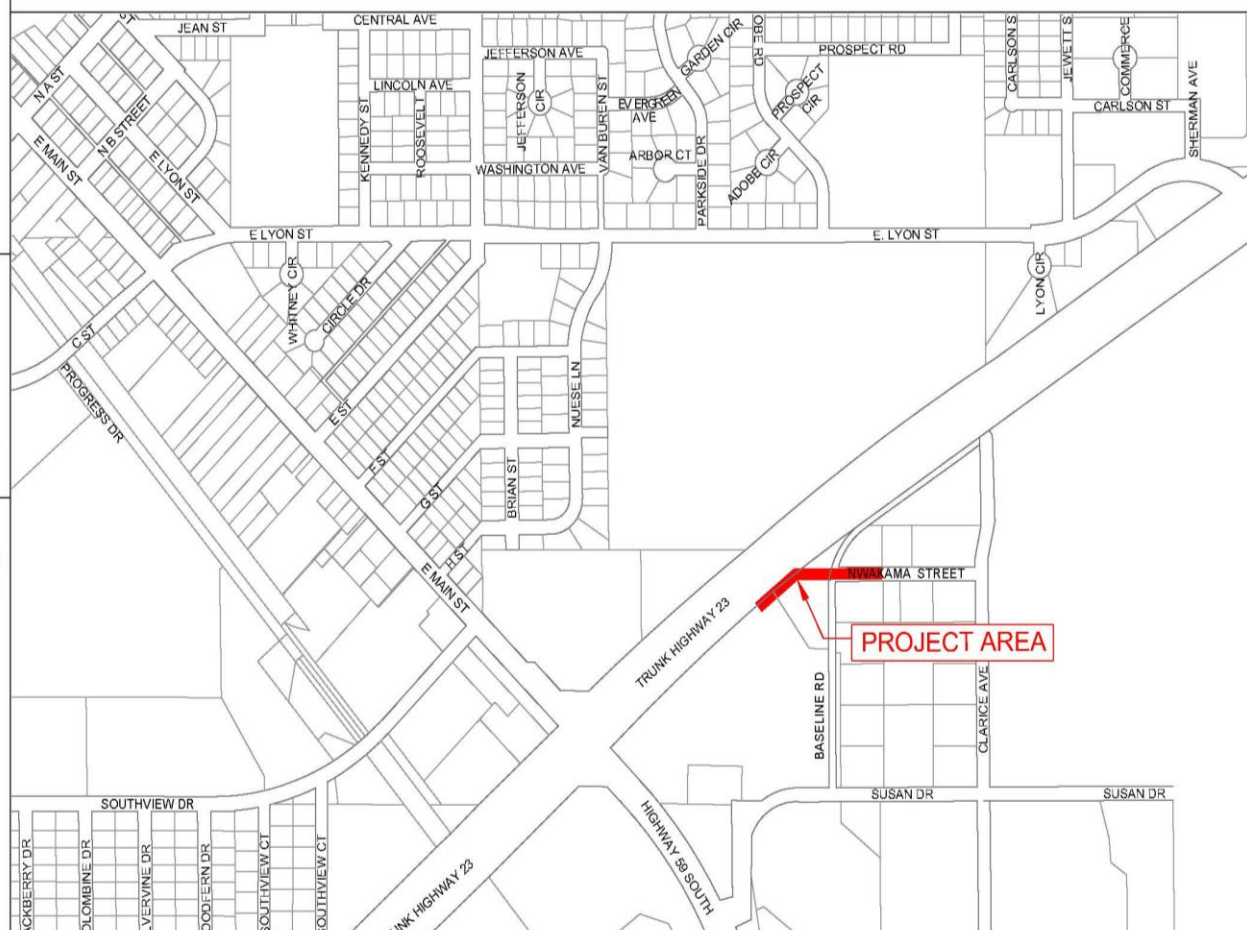
T.H.23/Independence Park Sewer Realignment  
From T.H. 23 Road Ditch at Runnings Pond  
To Nwakama Street  
SECTION 10 T111N, R41W

## INDEX

SHEET NO.	DESCRIPTION
1	Title Sheet
2	Estimated Quantity Sheet
3	Construction Notes/Detail Sheet
4	Typical Section Sheet
5-6	SWPPP Sheets
7-8	Plan and Profile Sheets

## LEGEND

ALIGNMENT STATIONS	
EXISTING GAS LINE	
EXISTING COMMUNICATION LINE	
EXISTING FIBER LINE	
EXISTING UNDERGROUND POWER	
EXISTING STREET LIGHT	
EXISTING CATCH BASIN	
EXISTING STORM MANHOLE	
EXISTING SANITARY MANHOLE	
EXISTING HYDRANT	
EXISTING WATER VALVE	
NEW CATCH BASIN	
NEW HYDRANT	
NEW WATER VALVE	
NEW SANITARY MANHOLE	
NEW STORM MANHOLE	
BENCHMARK TOP NUT HYDRANT	



## SPECIFICATION REFERENCE

THE 2018 EDITION OF THE MINNESOTA DEPARTMENT OF TRANSPORTATION "STANDARD SPECIFICATIONS FOR CONSTRUCTION" SHALL GOVERN.

ALL TRAFFIC CONTROL DEVICES SHALL CONFORM TO THE LATEST EDITION OF THE MINNESOTA MANUAL ON UNIFORM TRAFFIC CONTROL DEVICES, INCLUDING THE LATEST FIELD MANUAL FOR TEMPORARY TRAFFIC CONTROL ZONE LAYOUTS.

THE CITY OF MARSHALL STANDARD SPECIFICATIONS AND SPECIAL PROVISIONS.

I HEREBY CERTIFY THAT THIS PLAN WAS PREPARED BY ME OR UNDER MY DIRECT SUPERVISION AND THAT I AM A DULY LICENSED PROFESSIONAL ENGINEER UNDER THE LAWS OF THE STATE OF MINNESOTA.

APPROVED: CITY ENGINEER, MARSHALL, MINNESOTA DATE: REG NO 53322

## PROJECT LENGTH

GROSS LENGTH NWAKAMA ST.	240	FEET	0.05	MILES
EXCEPTIONS	0	FEET	0	MILES

## DESIGN DATA

DESIGN SPEED 30 MPH  
STOPPING SIGHT DISTANCE BASED ON  
3.5' HEIGHT OF EYE  
0.5' HEIGHT OF OBJECT

## SCALES

PLAN	1"=30'
PROFILE	1"=5'
INDEX MAP	1"=100'
GENERAL LAYOUT	1"=50'

DESIGNED BY: _____	DATE: _____	REVISIONS	INIT.
DRAWN BY: <u>Q.J.S.</u>			
APPROVED BY: _____			
SCALE: _____			



ENGINEERING DEPARTMENT  
344 WEST MAIN STREET  
MARSHALL, MINNESOTA  
56258

T.H. 23/INDEPENDENCE SANITARY

TITLE SHEET

CITY PROJECT NO. Z80	DATE 02/12/2021
STATE AID PROJECT NO.	SHEET NO. 1 OF 8