

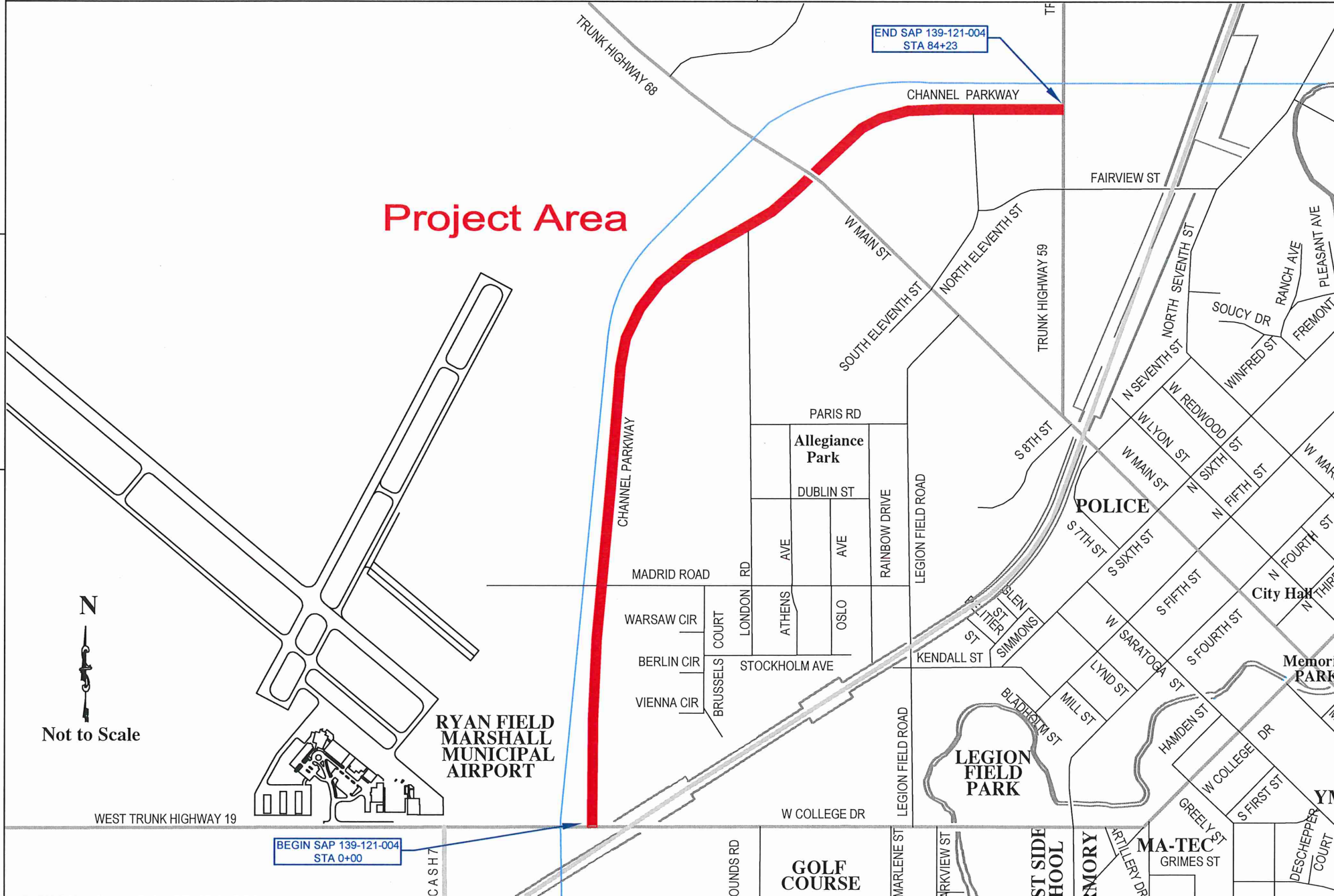
State Of Minnesota City of Marshall, Minnesota

Project Number SAP 139-121-004

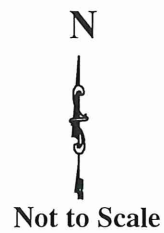
Construction Plans for Concrete Resurfacing, Pedestrian Curb Ramp Improvements
and Curb & Gutter repairs for:

Channel Parkway Resurfacing
FROM A POINT 1378 FEET EAST OF THE SOUTHWEST CORNER
OF SEC. 5, T111N, R41W TO A POINT 701 FEET NORTH OF
THE SOUTHEAST CORNER OF SEC. 32, T112N, R41W

SECTION 5 T111N, R41W
and SECTION 32 T112N, R41W



Project Area



LEGEND

ALIGNMENT STATIONS	
EXISTING GAS LINE	
EXISTING COMMUNICATION LINE	
EXISTING FIBER LINE	
EXISTING UNDERGROUND POWER	
EXISTING STREET LIGHT	
EXISTING CATCH BASIN	
EXISTING STORM MANHOLE	
EXISTING SANITARY MANHOLE	
EXISTING HYDRANT	
EXISTING WATER VALVE	
NEW CATCH BASIN	
NEW SANITARY MANHOLE	
NEW STORM MANHOLE	
BENCHMARK TOP NUT HYDRANT	

INDEX

SHEET NO.	DESCRIPTION
1	Title Sheet
2	Estimated Quantity Sheet
3	Construction Notes Sheet
4	Quantity Tables Sheet
5	Typical Section Sheet
6-7	SWPPP Sheet
8-18	Standard Plans & Plates
19-22	Removal Sheet
23-25	ADA Ramp Sheet
26-29	Joint Detail Sheet
30-33	Striping Detail Sheet

This Plan Contains 33 Sheets.

SPECIFICATION REFERENCE

THE 2020 EDITION OF THE MINNESOTA DEPARTMENT OF TRANSPORTATION "STANDARD SPECIFICATIONS FOR CONSTRUCTION" SHALL GOVERN.

ALL TRAFFIC CONTROL DEVICES SHALL CONFORM TO THE LATEST EDITION OF THE MINNESOTA MANUAL ON UNIFORM TRAFFIC CONTROL DEVICES, INCLUDING THE LATEST FIELD MANUAL FOR TEMPORARY TRAFFIC CONTROL ZONE LAYOUTS.

THE CITY OF MARSHALL STANDARD SPECIFICATIONS AND SPECIAL PROVISIONS.

PROJECT LENGTH

GROSS LENGTH	8421	FEET	1.595	MILES
EXCEPTIONS	48	FEET	0.009	MILES
NET LENGTH	8373	FEET	1.586	MILES

DESIGN DATA

DESIGN SPEED - 45 MPH
CURRENT ADT(2022) - 3050
PROJECTED ADT - 4180
TON DESIGN - 10
FUNCTIONAL CLASS:
-MAJOR COLLECTOR

TRAFFIC LANES - 4
PARKING LANES - 0

360' STOPPING SIGHT DISTANCE BASED ON:
-3.5' HEIGHT OF EYE
-0.5' HEIGHT OF OBJECT

SCALES

PLAN	1"=50'
PROFILE	1"=5'
INDEX MAP	1"=100'
GENERAL LAYOUT	1"=50'

I HEREBY CERTIFY THAT THIS PLAN WAS PREPARED BY ME OR UNDER MY DIRECT SUPERVISION AND THAT I AM A DULY LICENSE PROFESSIONAL ENGINEER UNDER THE LAWS OF THE STATE OF MINNESOTA.

APPROVED: CITY ENGINEER, MARSHALL MINNESOTA DATE: 7-21-22
REG NO 53322

CITY ENGINEER, PRINTED NAME DATE: 7-21-22

DISTRICT STATE AID ENGINEER: REVIEWED FOR COMPLIANCE WITH STATE AID RULES/POLICY DATE: _____

APPROVED FOR STATE AID FUNDING: STATE AID ENGINEER DATE: _____

DESIGNED BY: JRL	DATE	REVISIONS	INIT.
DRAWN BY: JRL			
APPROVED BY: JRA			
SCALE: N/A			

MARSHALL
 ENGINEERING DEPARTMENT
 344 WEST MAIN STREET
 MARSHALL, MINNESOTA
 56258

Channel Parkway
Title Sheet

CITY PROJECT NO. ST-008	DATE 07/21/2022
STATE AID PROJECT NO. 139-121-004	SHEET NO. 1 OF 33