



Not To Scale



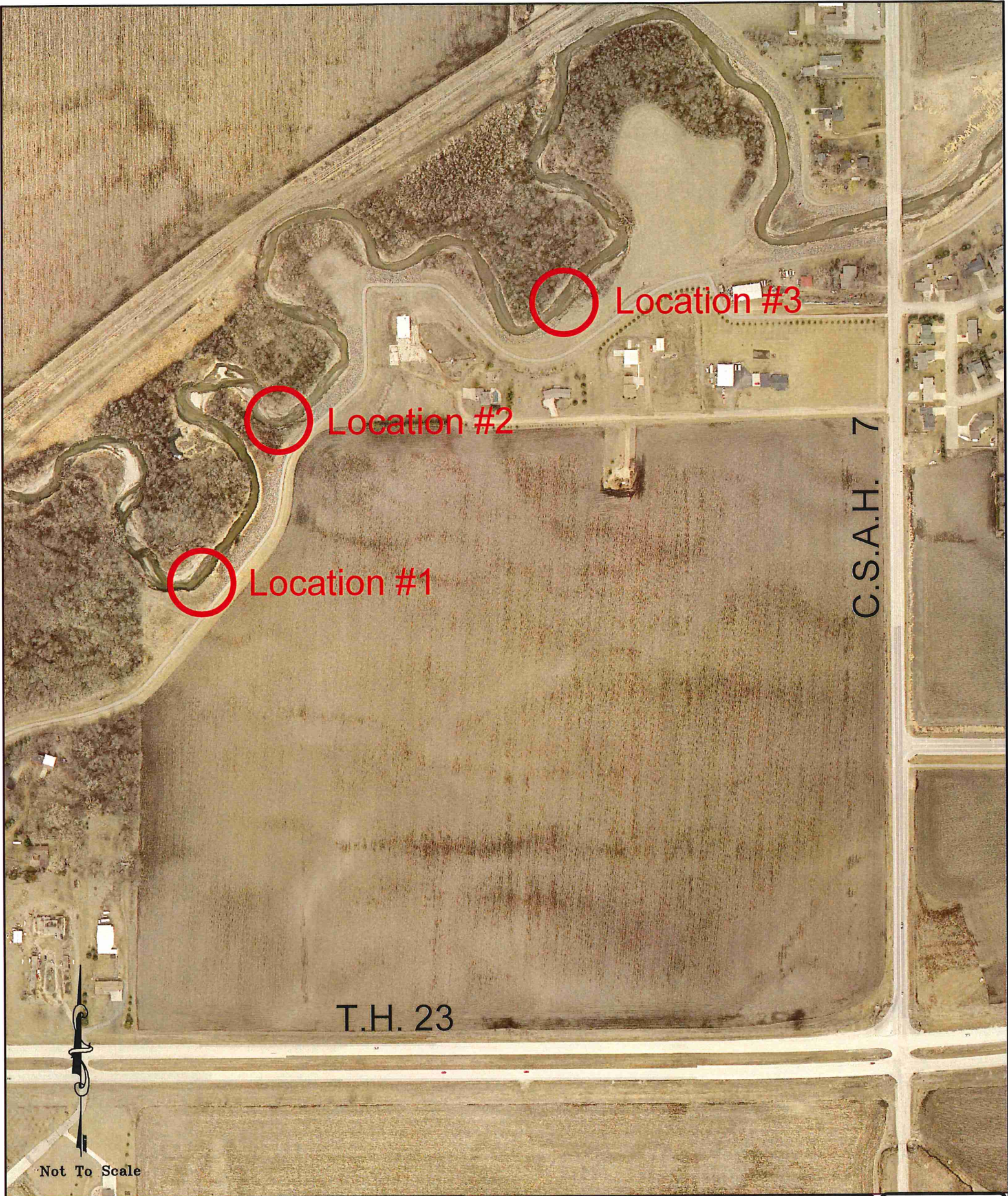
CITY ENGINEERS OFFICE  
344 WEST MAIN STREET  
MARSHALL, MINNESOTA  
56258

US Army Corps of Engineers

06/12/19

Flood Damage Locations

SHEET NO.  
1 OF 4



Location #3

Location #2

Location #1

C.S.A.H. 7

T.H. 23



Not To Scale



CITY ENGINEERS OFFICE  
344 WEST MAIN STREET  
MARSHALL, MINNESOTA  
56258

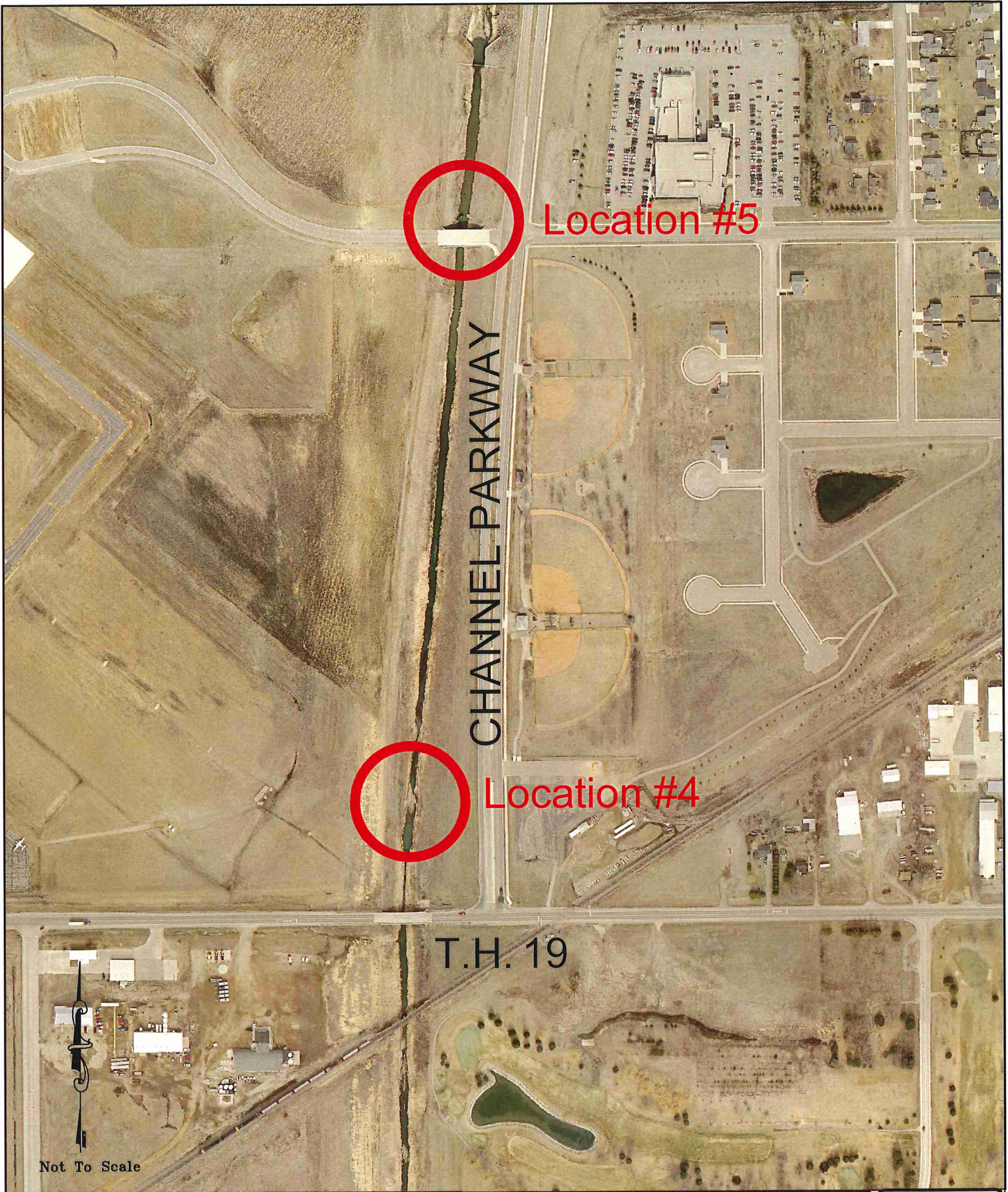
US Army Corps of Engineers

06/12/19

Flood Damage Location #1-3

SHEET NO.

2 OF 4



Location #5

CHANNEL PARKWAY

Location #4

T.H. 19

Not To Scale



CITY ENGINEERS OFFICE  
344 WEST MAIN STREET  
MARSHALL, MINNESOTA  
56258

US Army Corps of Engineers

06/12/19

Flood Damage Location #4-5

SHEET NO.  
3 OF 4



Location #6



NORTH 4TH STREET

NORTH BRUCE STREET

EAST FAIRVIEW



Not To Scale



CITY ENGINEERS OFFICE  
344 WEST MAIN STREET  
MARSHALL, MINNESOTA  
56258

US Army Corps of Engineers

06/12/19

Flood Damage Location #6

SHEET NO.

4 OF 4