



# Agency Administration Building Update

November 14, 2023



Who We Are

What We Do

Where We Are Located

Montevideo – ELC

Windom - ELC

Pipestone - ELC

Willmar/New London - ELC

Cosmos - ELC

Belview/Marshall - ELC

Marshall – Agency Administration Offices

Collaboration

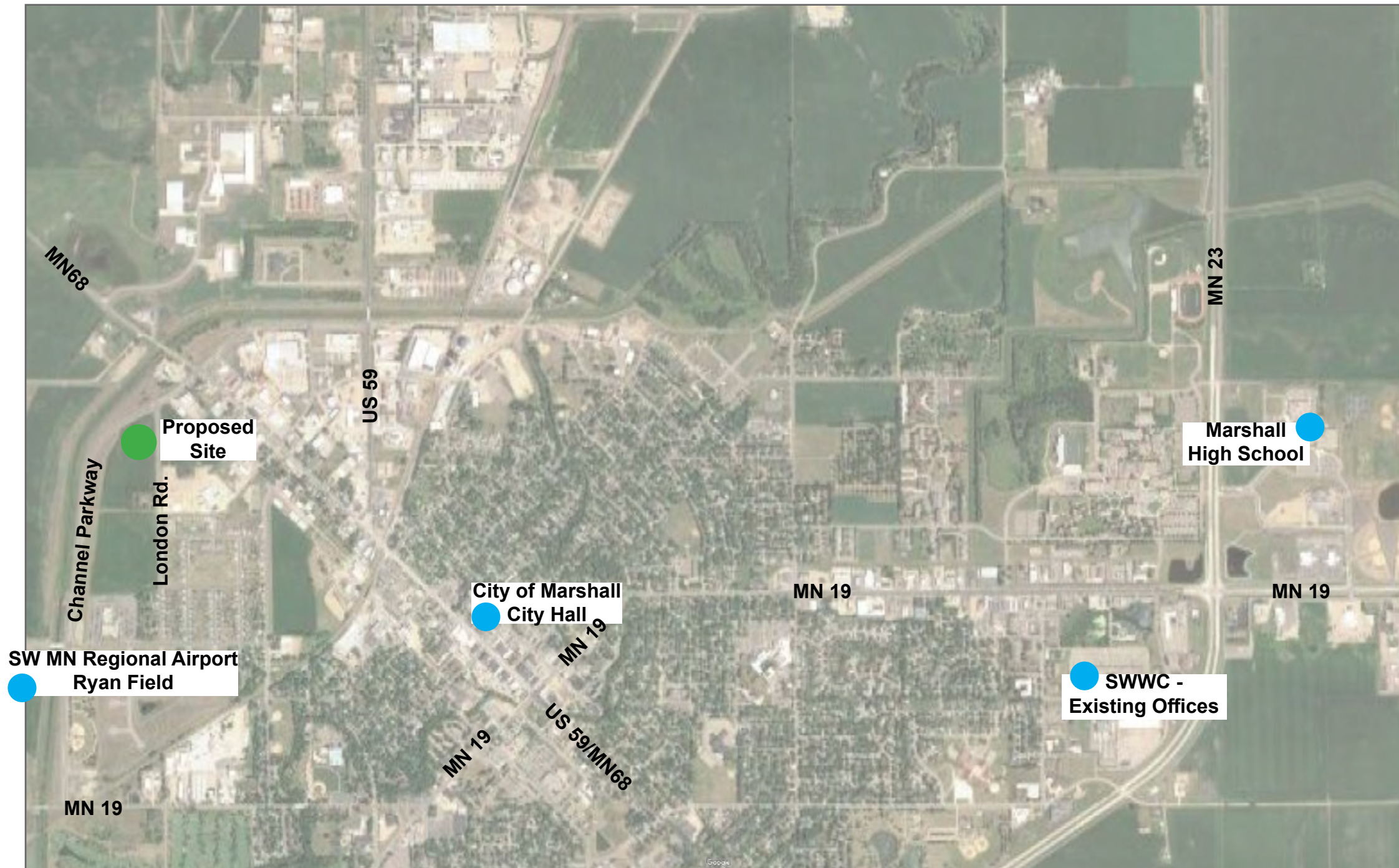
5 Acre Parcel

Channel Parkway and London Rd.

16,000± Building Footprint

50± On-Site Staff

75± Visitors For Training



Marshall, MN - Source: Google Maps

**CONFIDENTIAL**  
**CONCEPT PLANS**  
**FOR DISCUSSION**  
**ONLY**



## Site Location

DATE: 25 SEPTEMBER 2023

PROJECT NO.: 19005.002

# SWWC - Agency Administration Office Space Planning

Marshall, Minnesota

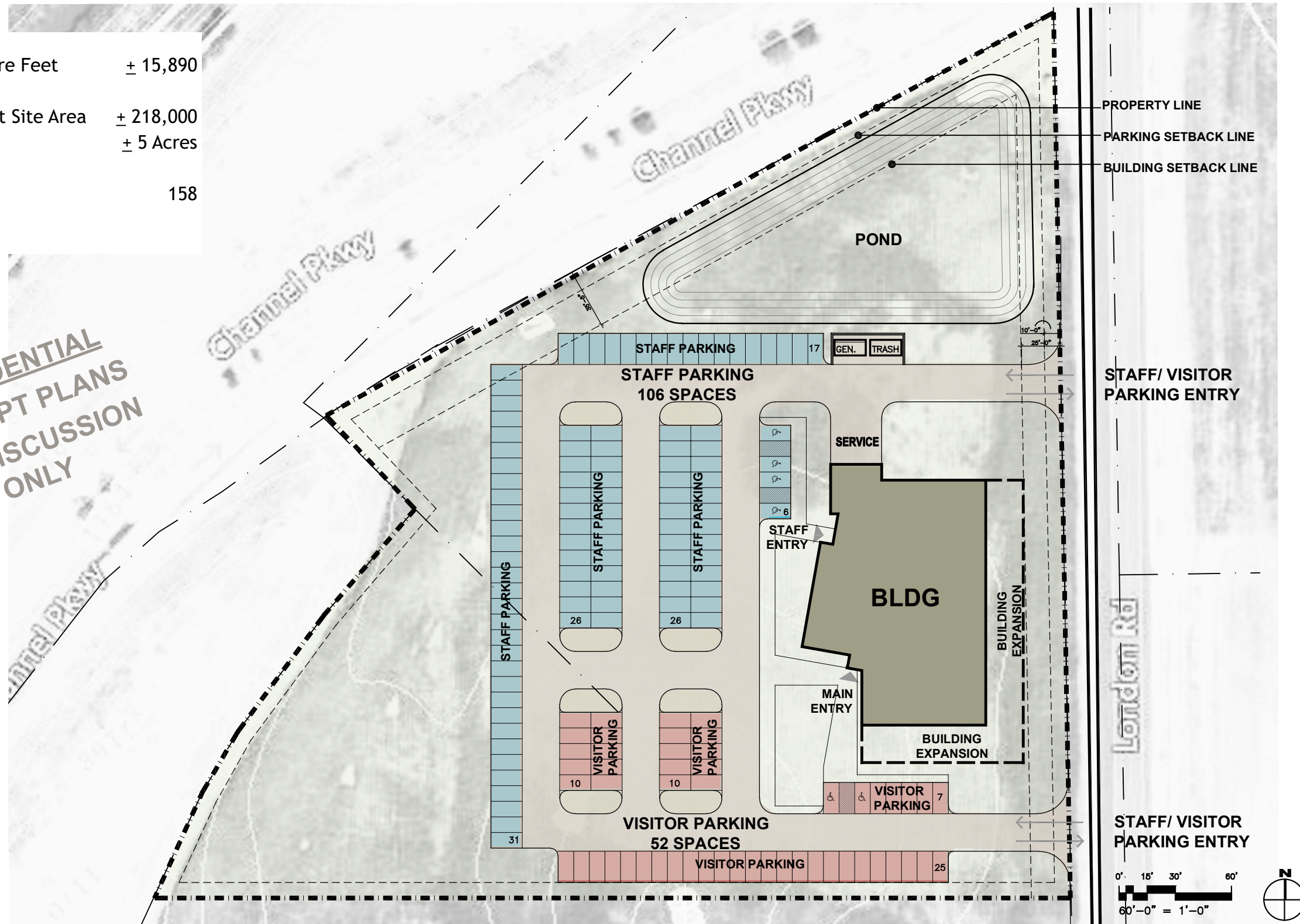
SK. 163





OFFICE SPACE:  
 Total Gross Square Feet ± 15,890  
 SITE AREA:  
 Total square Foot Site Area ± 218,000  
 Total Acreage ± 5 Acres  
 PARKING SPACES 158

**CONFIDENTIAL  
 CONCEPT PLANS  
 FOR DISCUSSION  
 ONLY**



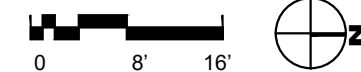
Updated 'Fit' Site Plan Option 3.2

- AGENCY ADMIN**
- OFFICE 1 (SINGLE) 3
- WORK STATION 7' x 10' 6
- FLY-IN STATION 6'x8' 2
  
- RMIC**
- OFFICE 1 (SINGLE) 11
- OFFICE 2 (DOUBLE) 2
- WORK STATION 7' x 10' 1
  
- TEACHING AND LEARNING**
- OFFICE 1 (SINGLE) 1
- OFFICE 2 (DOUBLE) 1
- WORK STATION 7' x 10' 2
  
- TECHNOLOGY**
- OFFICE 1 (SINGLE) 8
- WORK STATION 7' x 10' 6
- FLY-IN STATION 7'x7' 5
  
- UNASSIGNED**
- FLY-IN STATION 7'x7' 3
- 6'x6' 3



CONFIDENTIAL  
CONCEPT PLANS  
FOR DISCUSSION  
ONLY

- AGENCY ADMIN
- RMIC
- TEACHING & LEARNING
- TECHNOLOGY
- UNASSIGNED



## Updated 'Fit' Floor Plan Option 3.2 - W/Departments

DATE: 07 NOVEMBER 2023

# SWWC - Agency Administration Office Space Planning

PROJECT NO.: 19005.002

Marshall, Minnesota

SK. 164







**CONFIDENTIAL**  
**CONCEPT PLANS**  
**FOR DISCUSSION**  
**ONLY**

### Illustrative View Looking Northeast

## SWWC - Agency Administration Office Space Planning

Marshall, Minnesota

DATE: 25 SEPTEMBER 2023

PROJECT NO.: 19005.002

SK. 147







**CONFIDENTIAL**  
**CONCEPT PLANS**  
**FOR DISCUSSION**  
**ONLY**

## Illustrative Looking East to Building Entry

# SWWC - Agency Administration Office Space Planning

Marshall, Minnesota

DATE: 25 SEPTEMBER 2023

PROJECT NO.: 19005.002

SK. 148







**CONFIDENTIAL**  
**CONCEPT PLANS**  
**FOR DISCUSSION**  
**ONLY**

## Illustrative Looking North at London Road

DATE: 25 SEPTEMBER 2023

PROJECT NO.: 19005.002

# SWWC - Agency Administration Office Space Planning

Marshall, Minnesota

SK. 161





## 2023

### October 2023

Schematic Design (SD)  
MDE RC submittal  
Survey  
Geo Tech

### November 2023

Design Development (DD)  
Execute PDA  
Draft PA

### December 2023

Finalize Design Development and cost estimate.

## 2024

### January 2024

Start Construction documents (CD).  
MDE RC update

### February 2024

Complete Construction documents  
Submit for permit.

### March – April 2024

Bidding  
Close on property  
Close on financing  
Notice to proceed with construction.

### May 2024 – July 2025

Building construction  
Commission and Occupancy

**CONFIDENTIAL**  
**CONCEPT PLANS**  
**FOR DISCUSSION**  
**ONLY**

## Preliminary Project Schedule

DATE: 25 SEPTEMBER 2023

PROJECT NO.: 19005.002

**SWWC - Agency Administration Office Space Planning**  
Marshall, Minnesota

SK. 159





Thank You!

Questions

End of Presentation