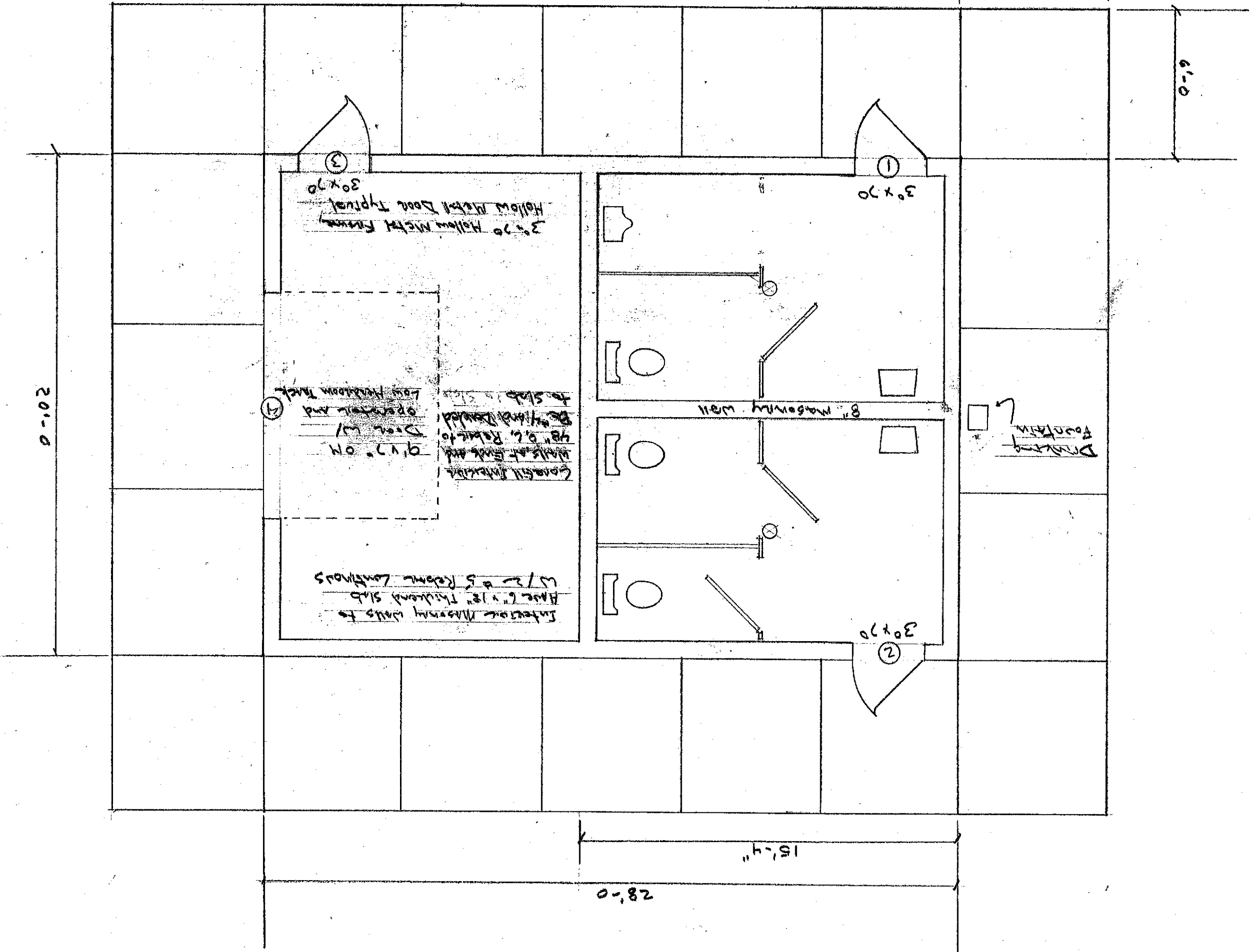


Freedom Park Restroom

Floor Plan 1/4" = 1'-0"



Drinking Fountain

8" Masonry Wall

Interior Masonry Walls to Have 6" x 12" Thickness Slab

Walls at Ends and 48" o.c. Ribs to Be 4" Thick

Low Freedom Track

3' x 20" Hollow Metal Frames

Hollow Metal Door Typical 3' x 20"

20'-0"

15'-4"

28'-0"

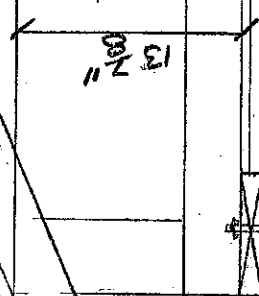
6'-0"

6'-0"

Standing Seam Roof
Synthetic Felt
5/8 GTSX
Twiss System

Roof Apron
2x6 sub fascia

Steel Fascia
Alum. Soffit



Sill Seal
2x8 PT Plate

1/2" x 8 Galvanized Anchor Bolt @ 48" On Center AND ALL Louvers

1/2" AC Plywood, Painted

8" Bond Beams w/2#5 Rebar

Core Fill 4' On Center w/1#4 Rebar
Core Fill w/1#4 Rebar at Louvers and Door Jamb

8" Rock Faced Corner Block w/Integral Ledge
Interior Walls 8" Conc. Block w/Integral Ledge

Interior Walls Sealed

4" 4000# Conc. w/granite
Siderwalk 6' wide

8" Bond Beams w/2#5 Rebar

4" 4000# Conc w/granite, sealed

Granular Fill

20" x 10" Conc. Footing w/2#5 Horizontal Rebar
3000# Conc

SECTION 1" = 1'-0"