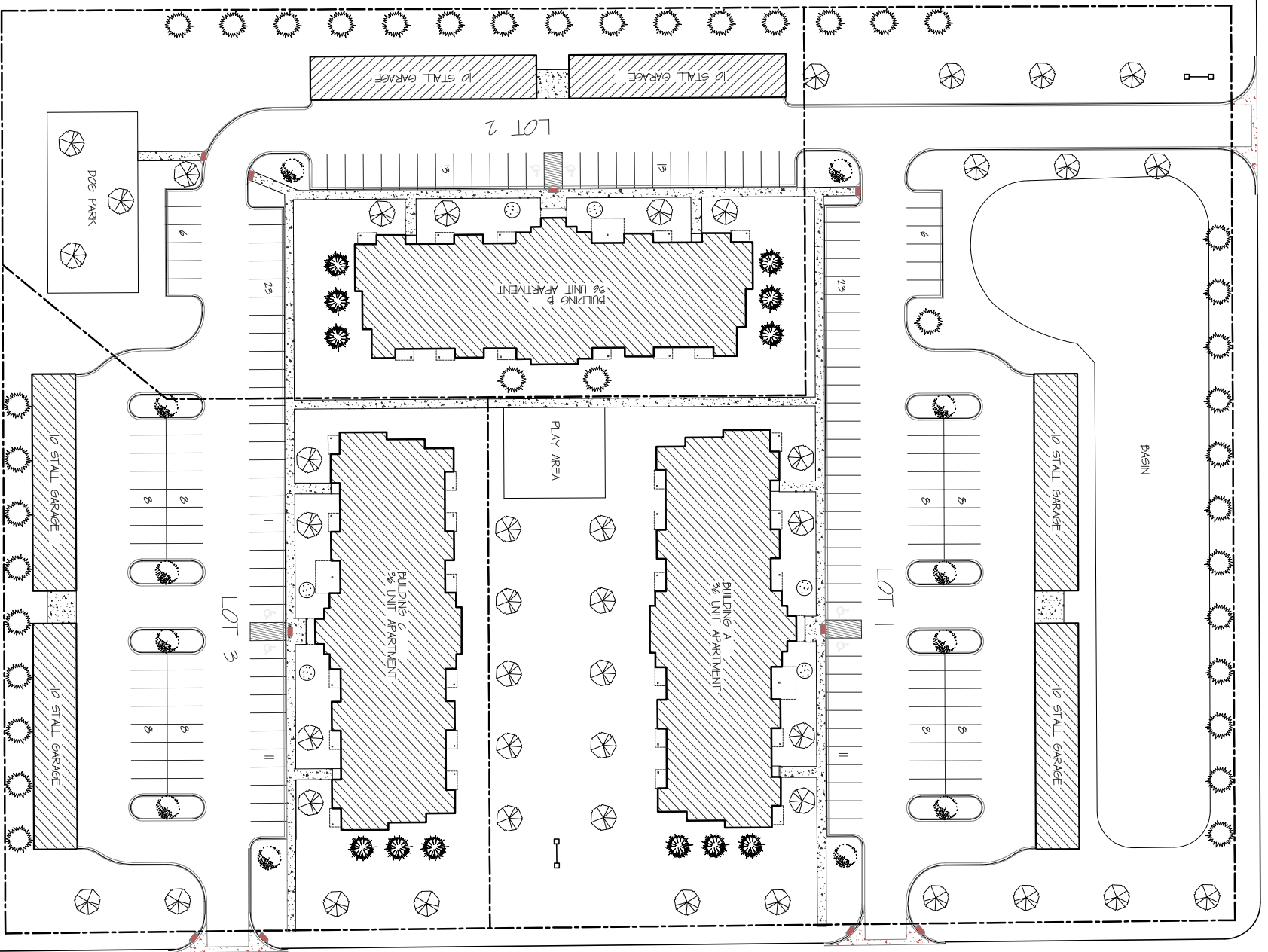


- PLANTING LEGEND - SHRUBS:**
- = LITTLE QUICK TREE HYDRANGEA (TREE FORM) - HYDRANGEA PANICULATA SHIMADZU  
1 TREES PER BUILDING
  - ⊗ = DWARF HIGH-BUSH CRANBERRY - VIBURNUM OBTUSUM MAUII  
5 GAL/LIN  
5 STRIPS PER BUILDING
  - = LITTLE NINEBARK - PHYSOCARPUS OPULIFOLIUS  
5 GAL/LIN  
5 STRIPS PER BUILDING
  - ⊗ = KAL FORGESSER GRASS - CALYPTROGLOPHUS ACUTIFOLIA  
5 GAL/LIN  
11 STRIPS PER BUILDING
  - = LITTLE FRINGEE SPREA - BRUNELLA JAPONICA 'LITTLE PRINCESS'  
5 GAL/LIN  
11 STRIPS PER BUILDING
  - ⊗ = SPANISH BROOM - BRUNELLA JAPONICA 'LITTLE PRINCESS'  
5 GAL/LIN  
11 STRIPS PER BUILDING



- LANDSCAPE NOTES:**
- LANDSCAPED AREAS TO RECEIVE SOD. RETENTION BASIN AREAS SHALL BE SEEDED.
  - LAWN REGULATION SYSTEM TO BE INSTALLED AT ALL SOD & BED AREAS.
  - SOD SHALL BE CULTURED KENTUCKY BLUEGRASS. LANDSCAPE CONTRACTOR WILL WATER AT THE OF INSTALLATION AND ROLL AT ALL SOD AS NEEDED TO ASSURE A GROWTH TURT. ALL SLATES GREATER THAN 5' TO 1' SHALL BE STAKED.
  - ALL GRID BEDS TO RECEIVE LANDSCAPE ROCK WITH WEED BARRIER FABRIC.
  - ALL AREAS WHERE SOD AND ROCK TOUCH SHALL HAVE COMMERICAL GRADE BLACK TPO/EPDM.
  - ALL SINGLE STEM TREE SPECIES SHALL BE STAKED.
  - LOCATE ALL UTILITIES BY ACTUAL LOCATION IN THE FIELD PRIOR TO PLANTING OPERATION.

- PLANTING LEGEND - SITE TREES:**
- = BLACK HILLS SPRUCE - PICEA GLAUCOA BENNETTA  
D & D 6 FEET HIGH  
= 20 TREES
  - = NORWAY SPRUCE - PICEA ABIES  
D & D 6 FEET HIGH  
= 12 TREES
  - = GREENHOUSE LINDEN - TILIA CORODATA (GREENHOUSE)  
D & D 1.5" CALIBER  
= 12 TREES
  - = AUTUMN PLAZE WATTLE - ACER X FRAXINUM  
D & D 1.5" CALIBER  
= 45 TREES
  - = FRANKFIRE FLOWING GRAB - MALUS FRANKFIRE  
D & D 2" CALIBER  
= 6 TREES
  - = MARSHAL HONEYLOCUST - GLEDITSIA TRIACANTHOS NERBENS PYRACOLE  
D & D 1.5" CALIBER  
= 0 TREES

- SITE LIGHTING LEGEND:**
- ⊙ = P-1 = POLE MOUNTED LUMINAIRE - SINGLE HEAD  
4" SQUARE - 12' POLE RAB LIGHTING MAT 3
  - ⊙ = P-2 = POLE MOUNTED LUMINAIRE - DOUBLE HEAD  
4" SQUARE - 12' POLE RAB LIGHTING MAT 3
  - ⊙ = WP-1 = WALL PARK LUMINAIRE  
RAB LIGHTING SLIM 15
  - ⊙ = WP-2 = LED SPOT FLOOD LIGHTING  
DIRECTIONAL ACCENT LIGHT
  - ⊙ = RC-1 = LED RECESSED DISK AT ENTRANCE CANOPY
  - ⊙ = P-1 = LED BALBAED LIGHT - SITE LIGHT
- NOTE: ALL DECKS/PATIOS TO HAVE A WALL MOUNTED EXTERIOR LIGHT THAT IS MANUALLY CONTROLLED BY THE TENANT.  
PATRIOT LIGHTING - SONOMA (02BTRWPT) OR EQUAL.

REVISIONS	DATE

I hereby certify that this plan, specification, or report was prepared by me or under my direct supervision and that I am a duly Licensed Architect under the laws of the State of Minnesota.

Name: \_\_\_\_\_  
Signed: \_\_\_\_\_  
Date: \_\_\_\_\_ License #: \_\_\_\_\_

**MARSHALL APARTMENTS**  
MARSHALL, MN  
copyright kuepers, 2024

**KUEPERS** INC  
ARCHITECTS & BUILDERS  
BRainerd/BAXTER, MN 218-829-0707

UPD	01-23-XXXX
TRAIN	RETI
DATE	07-10-24
SCALE	AS SHOWN
DWG. #	