

WINDSTAR STREET

JAGUAR COURT

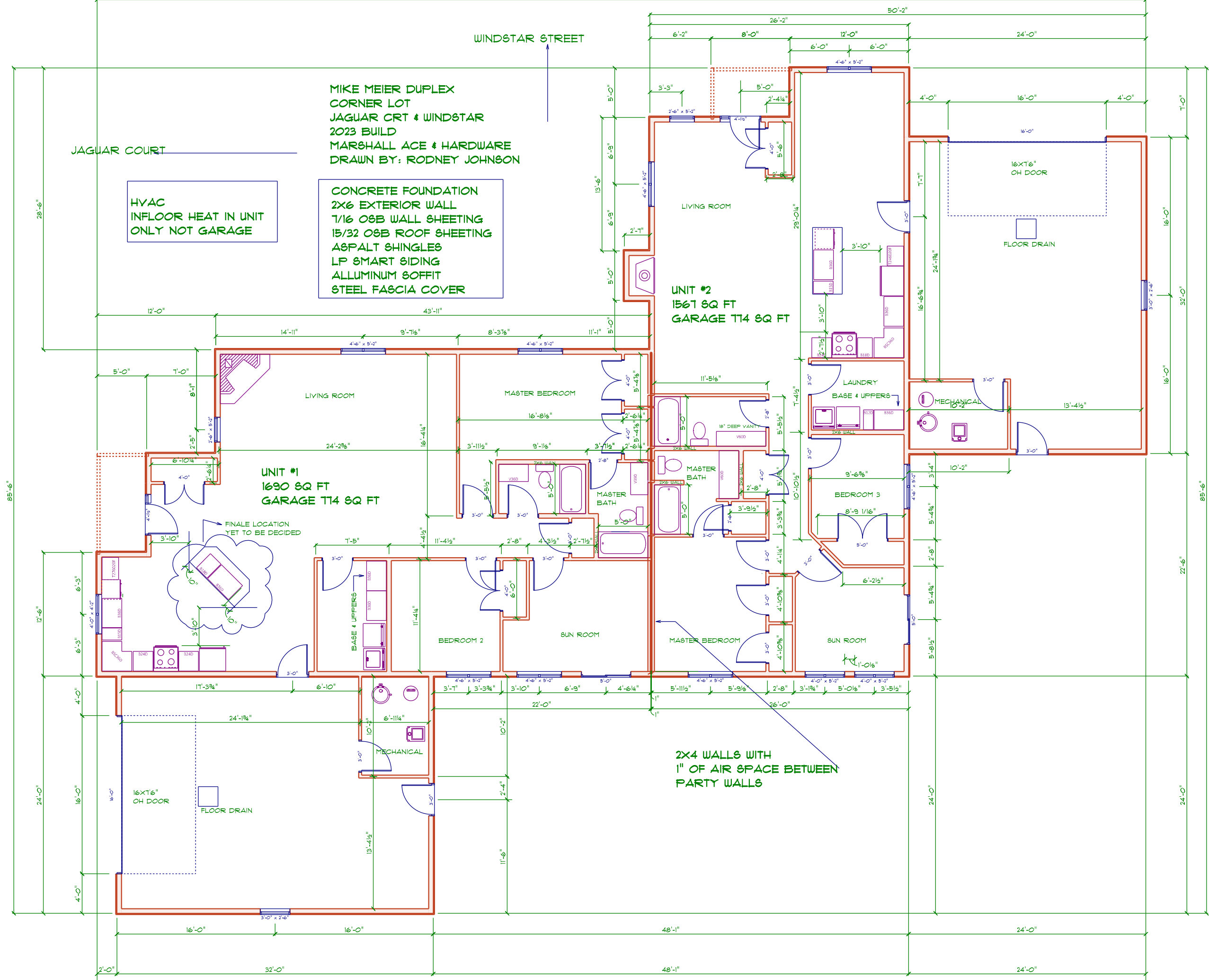
HYAC
INFLOOR HEAT IN UNIT
ONLY NOT GARAGE

CONCRETE FOUNDATION
2X6 EXTERIOR WALL
7/16 OSB WALL SHEETING
15/32 OSB ROOF SHEETING
ASPHALT SHINGLES
LP SMART SIDING
ALLUMINUM SOFFIT
STEEL FASCIA COVER

UNIT #2
1567 SQ FT
GARAGE T14 SQ FT

UNIT #1
1690 SQ FT
GARAGE T14 SQ FT

2X4 WALLS WITH
1" OF AIR SPACE BETWEEN
PARTY WALLS



WINDSTAR STREET

JAGUAR COURT

26'-0" SETBACK FROM FRONT PROPERTY LINE

EXCAVATOR TO PUT IN ROCK DRIVEWAY DURING CONSTRUCTION IF MUD/DIRT BECOMES AN ISSUE ON STREET

9'-11" SETBACK FROM SIDE PROPERTY LINE

DUPLEX #2
MARSHALL ACE & HARDWARE
DRAWN BY: RODNEY JOHNSON

UNIT #2
1567 SQ FT
GARAGE T14 SQ FT

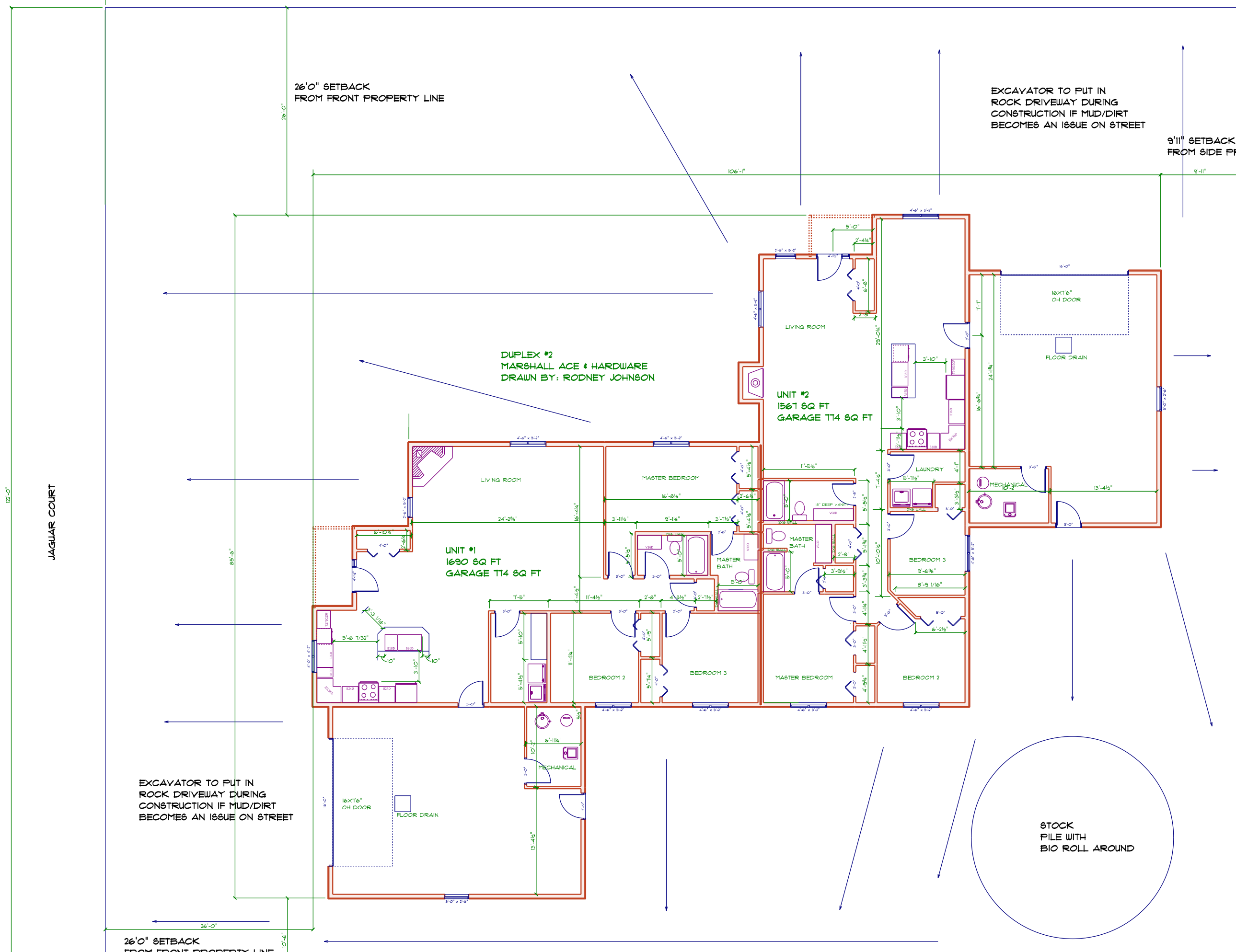
UNIT #1
1690 SQ FT
GARAGE T14 SQ FT

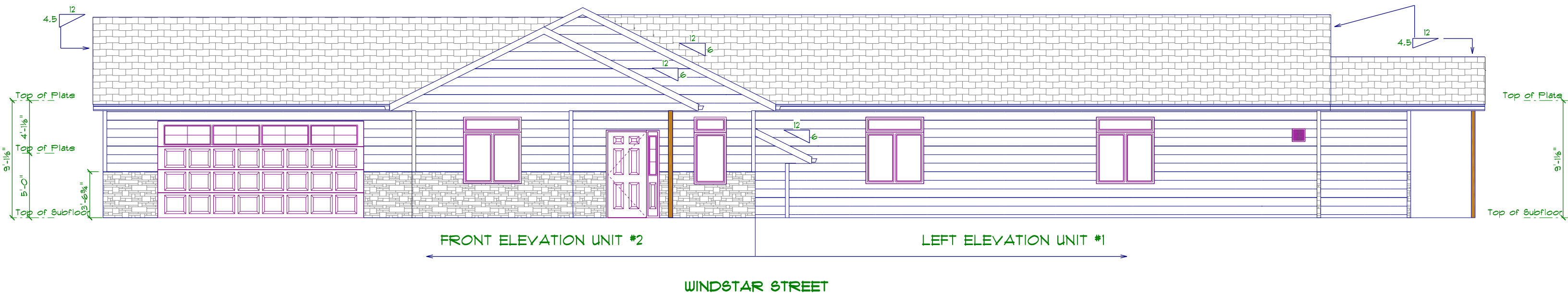
EXCAVATOR TO PUT IN ROCK DRIVEWAY DURING CONSTRUCTION IF MUD/DIRT BECOMES AN ISSUE ON STREET

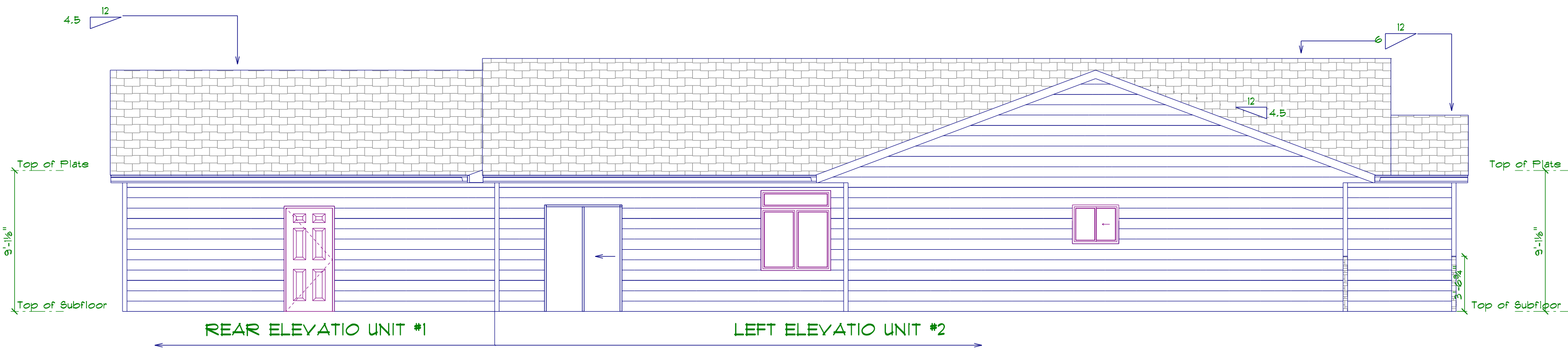
STOCK
PILE WITH
BIO ROLL AROUND

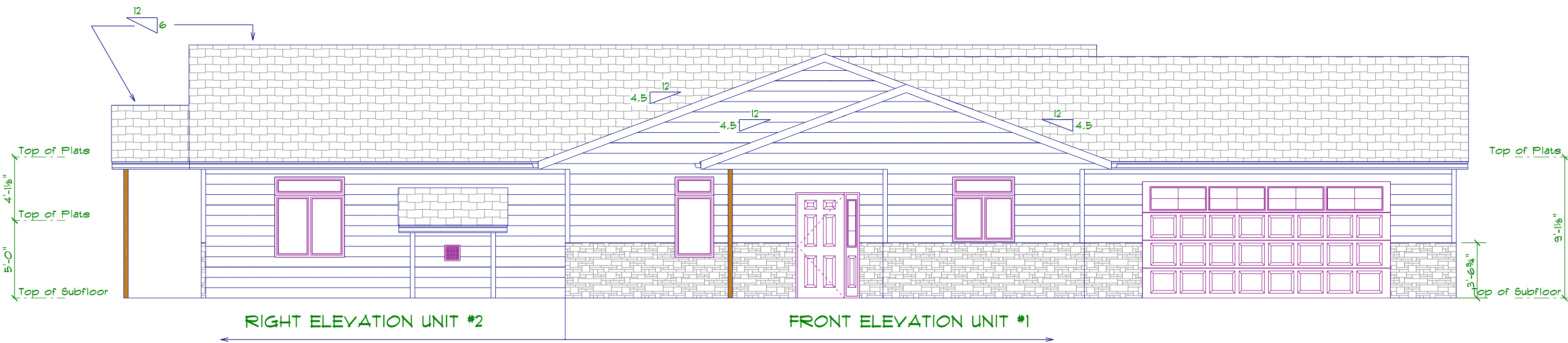
26'-0" SETBACK FROM FRONT PROPERTY LINE

10'-6" SETBACK FROM SIDE PROPERTY LINE









JAGUAR COURT

