

State Of Minnesota City of Marshall, Minnesota Project Number PK-015

Construction Plans for Reconstruction, Excavation, Graveling, Bituminous/Concrete Surfacing, and Misc. Work for

INDEPENDENCE PARKING LOT & ENTRANCE ROAD RECONSTRUCTION 1200 East Lyon Street, Parking Lot is Located East of the intersection of Nuese Lane & G Street SECTION 10 T111N, R41W

INDEX

SHEET NO.	DESCRIPTION
1	Title Sheet
2	Estimated Quantities/Notes
3	Typical Section
4	Detail/Quantity Table Sheet
5-6	SWPPP Sheets
7	Removal/Joining/Striping Sheet
8	Plan & Profile Sheet
9-12	Pavement Joint Standard Plans

LEGEND

ALIGNMENT STATIONS	_____
EXISTING GAS LINE	_____
EXISTING COMMUNICATION LINE	_____
EXISTING FIBER LINE	— FIB — FIB —
EXISTING UNDERGROUND POWER	— UGP — UGP —
EXISTING STREET LIGHT	⊕
EXISTING CATCH BASIN	□
EXISTING STORM MANHOLE	⊙
EXISTING SANITARY MANHOLE	⊙
EXISTING HYDRANT	⊕
EXISTING WATER VALVE	⊕
NEW CATCH BASIN	□
NEW HYDRANT	⊕
NEW WATER VALVE	⊕
NEW SANITARY MANHOLE	⊙
NEW STORM MANHOLE	⊙
BENCHMARK TOP NUT HYDRANT	⊕

SPECIFICATION REFERENCE

THE 2020 EDITION OF THE MINNESOTA DEPARTMENT OF TRANSPORTATION "STANDARD SPECIFICATIONS FOR CONSTRUCTION" AND THE SUPPLEMENTAL SPECIFICATIONS DATED SEPTEMBER 2022 SHALL GOVERN

ALL TRAFFIC CONTROL DEVICES SHALL CONFORM TO THE LATEST EDITION OF THE MINNESOTA MANUAL ON UNIFORM TRAFFIC CONTROL DEVICES, INCLUDING THE LATEST FIELD MANUAL FOR TEMPORARY TRAFFIC CONTROL ZONE LAYOUTS.

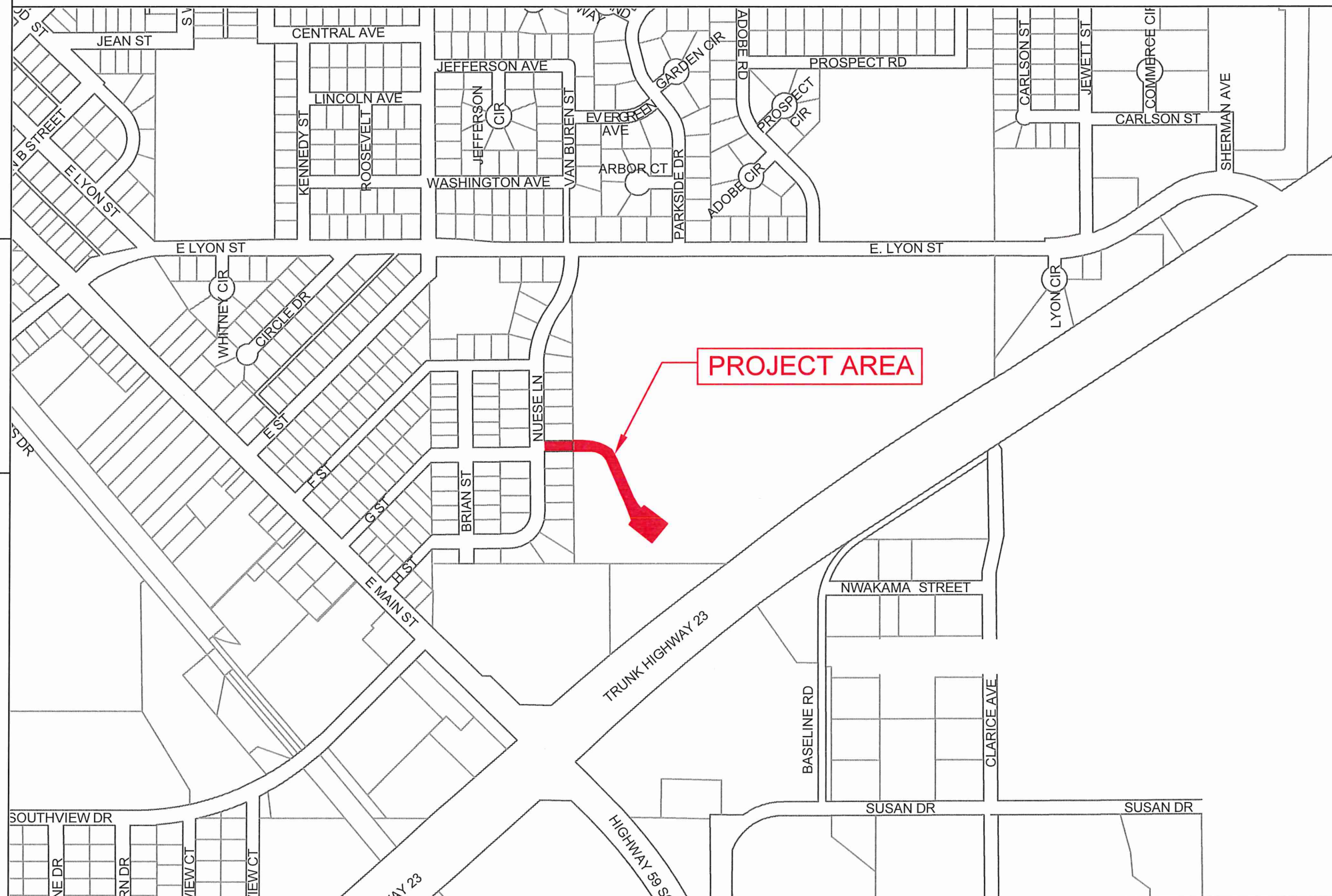
THE CITY OF MARSHALL STANDARD SPECIFICATIONS AND SPECIAL PROVISIONS.

PROJECT AREA

AREA INDEPENDENCE LOT	27,168	SQ.FT.	N/A	MILES
TOTAL NET AREA	27,168	SQ.FT.	N/A	MILES

SCALES

PLAN	1"=40'
PROFILE	1"=5'
INDEX MAP	1"=100'
GENERAL LAYOUT	1"=40'



I HEREBY CERTIFY THAT THIS PLAN WAS PREPARED BY ME OR UNDER MY DIRECT SUPERVISION AND THAT I AM A DULY LICENSE PROFESSIONAL ENGINEER UNDER THE LAWS OF THE STATE OF MINNESOTA.

APPROVED: CITY ENGINEER, MARSHALL MINNESOTA DATE: REG NO 53322

DESIGNED BY: GJS
DRAWN BY: GJS
APPROVED BY: JRA
SCALE: N/A

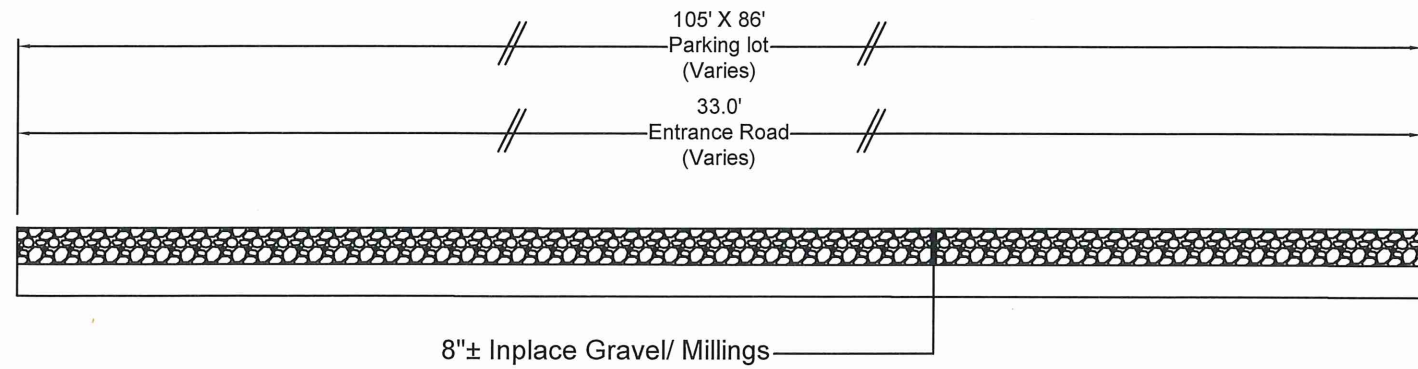
DATE	REVISIONS	INIT.


MARSHALL
 ENGINEERING DEPARTMENT
 344 WEST MAIN STREET
 MARSHALL, MINNESOTA
 56258

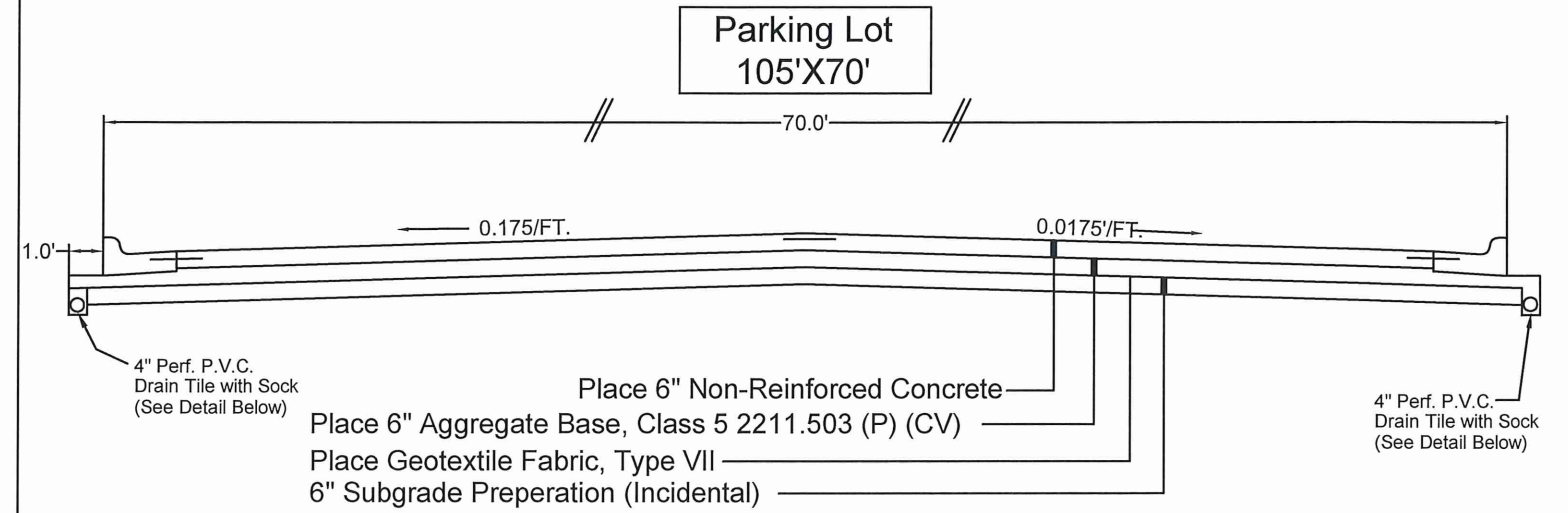
INDEPENDENCE PARKING LOT
TITLE SHEET

CITY PROJECT NO. PK-015	DATE 03/15/2024
STATE AID PROJECT NO.	SHEET NO. 1 OF 12

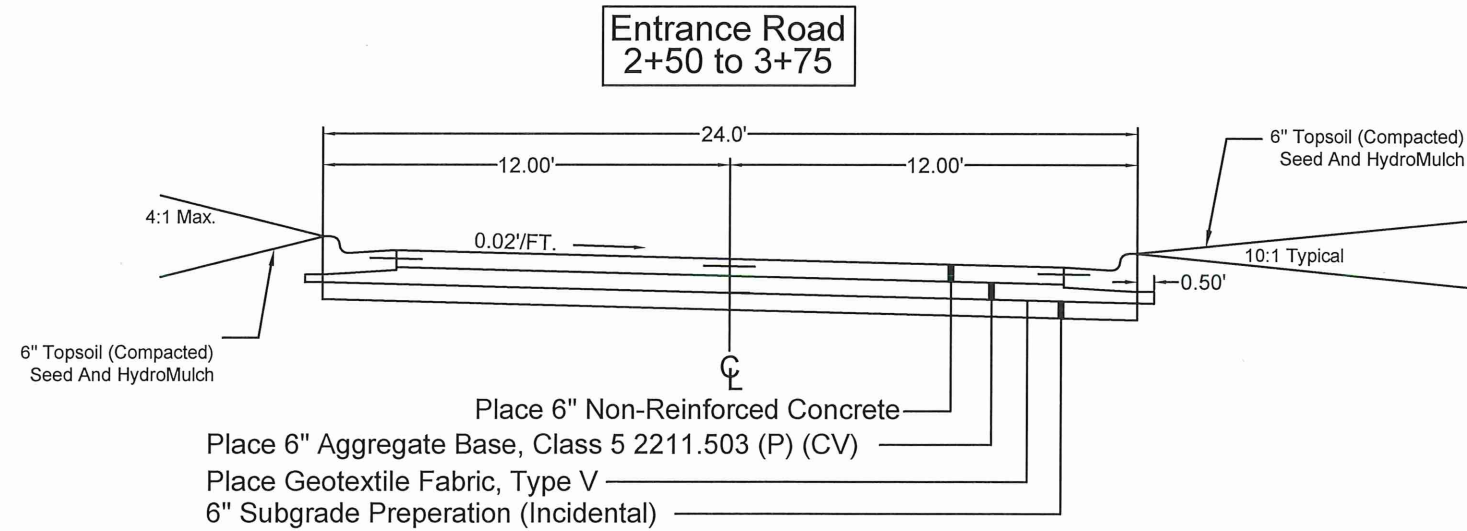
Existing Typical Section



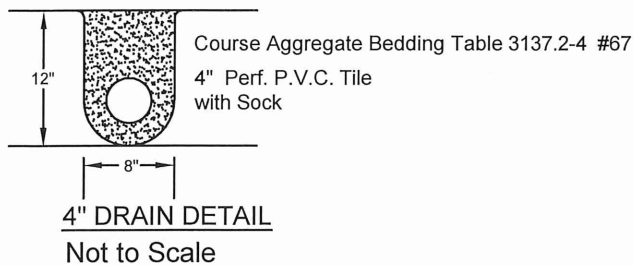
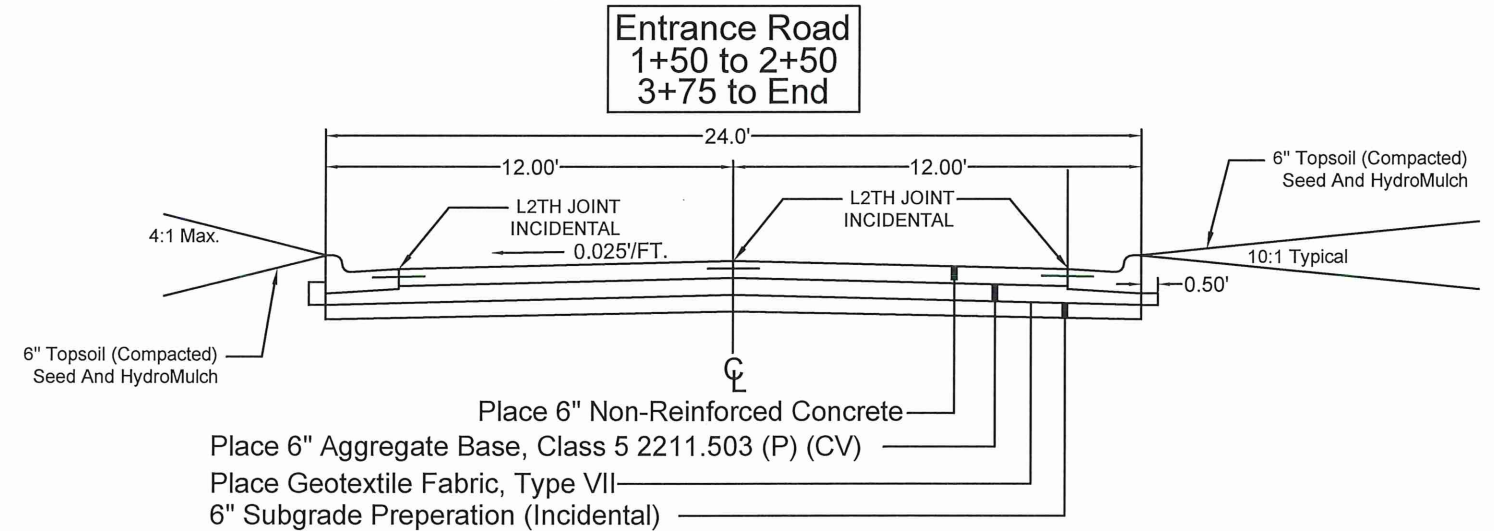
Proposed Typical Section



Proposed Typical Section



Proposed Typical Section



DESIGNED BY: G.J.S.	DATE	REVISIONS	INIT.
DRAWN BY: G.J.S.			
APPROVED BY: J.R.A.			
SCALE: NA			

MARSHALL

ENGINEERING DEPARTMENT
344 WEST MAIN STREET
MARSHALL, MINNESOTA
56258

INDEPENDENCE PARKING LOT

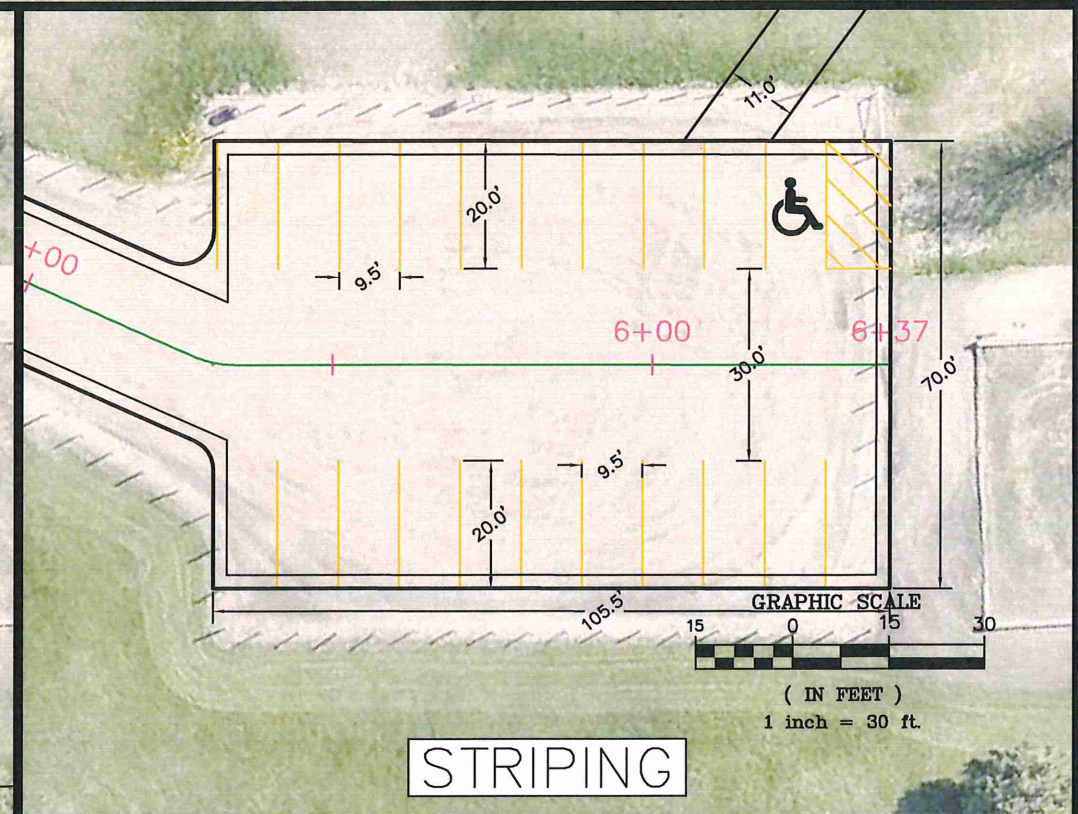
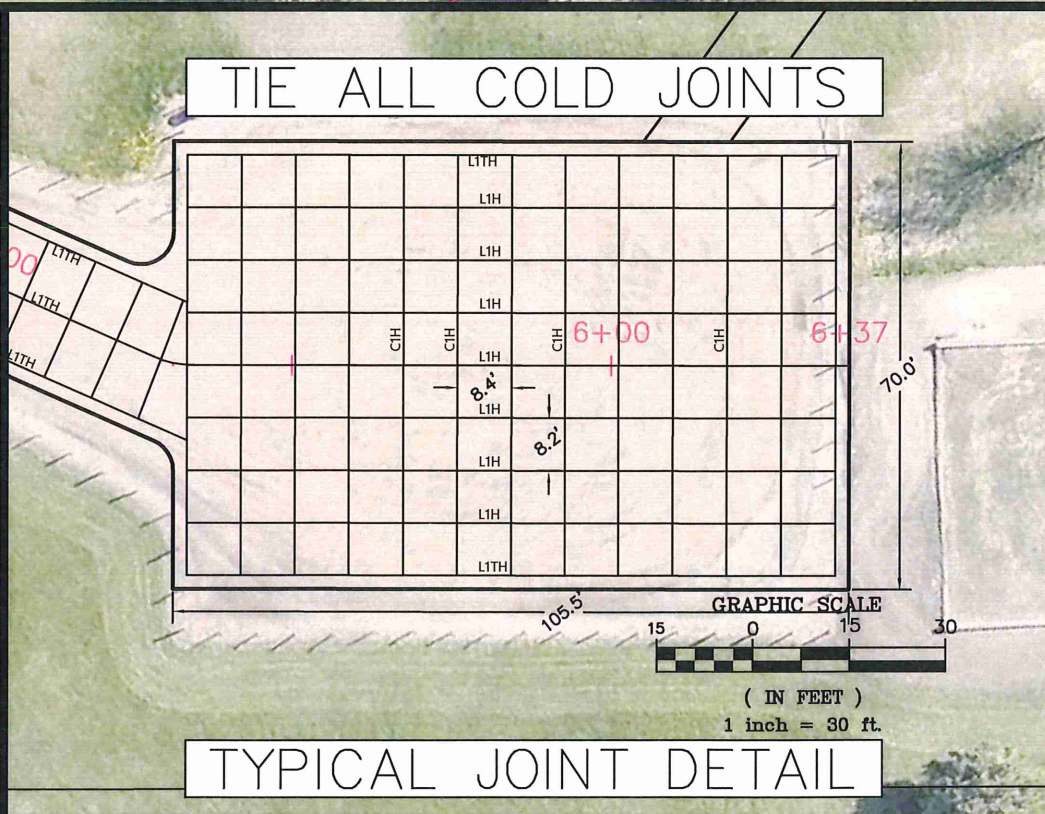
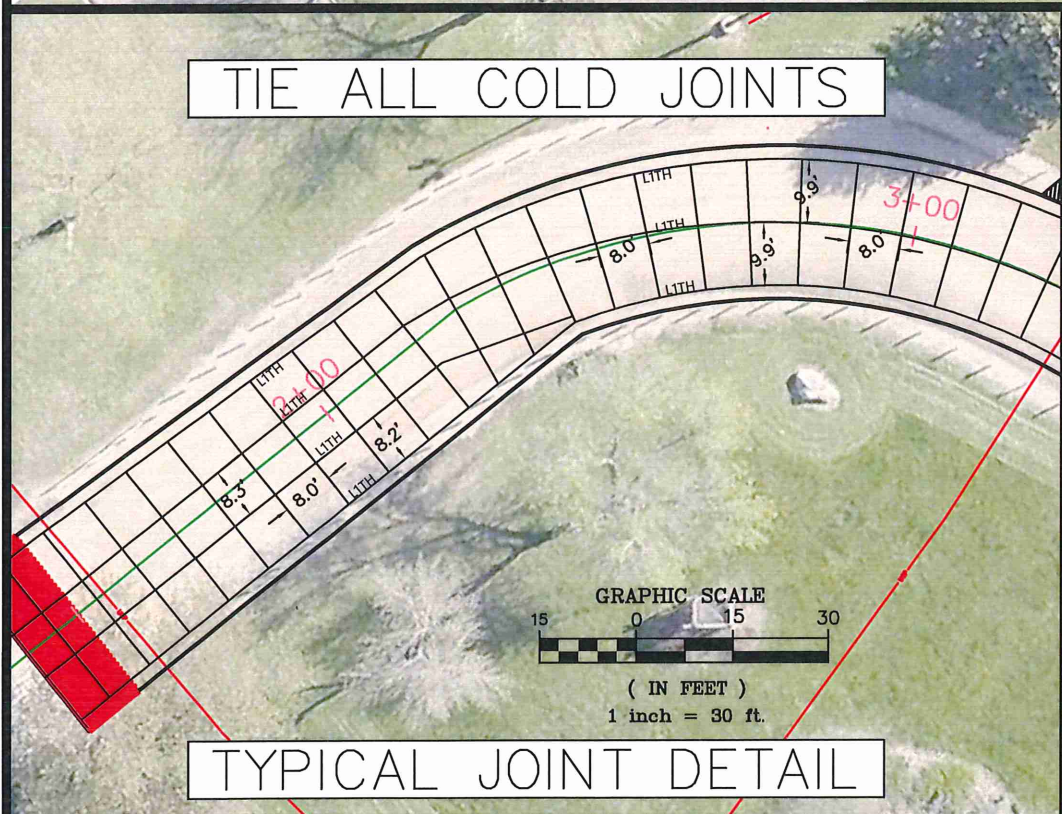
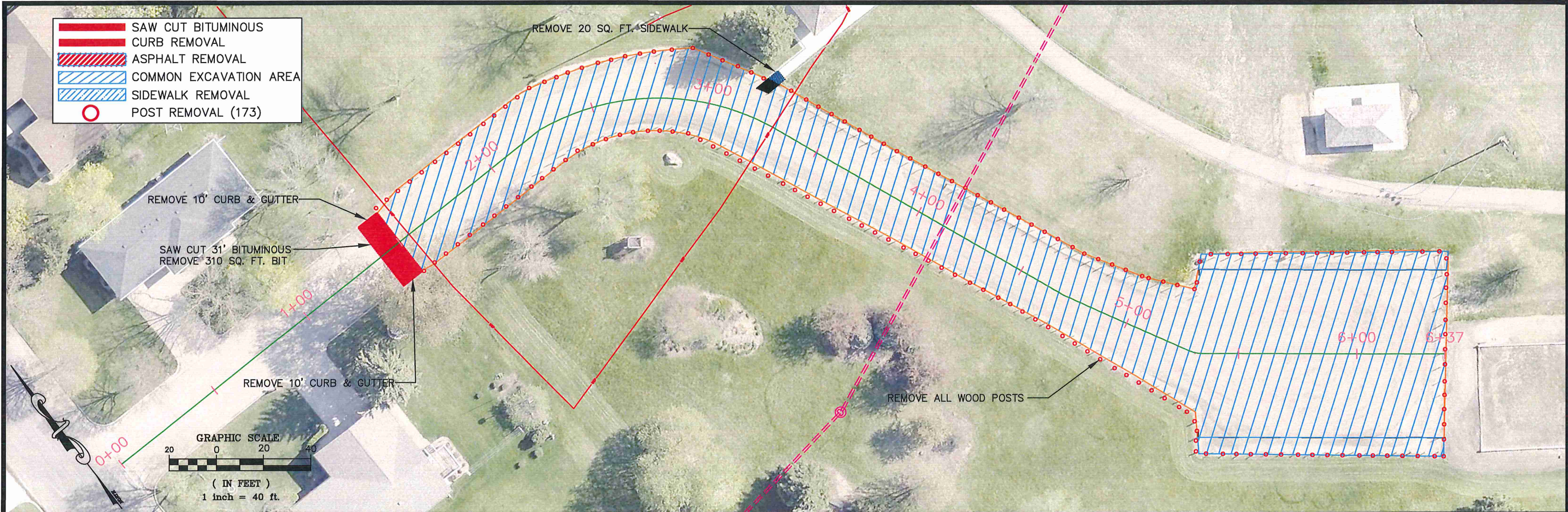
TYPICAL SECTION

I HEREBY CERTIFY THAT THIS PLAN, SPECIFICATION OR REPORT WAS PREPARED BY ME OR UNDER MY DIRECT SUPERVISION AND THAT I AM A DULY LICENSED ENGINEER UNDER THE LAWS OF THE STATE OF MINNESOTA.

DATE _____ LICENSE NO. 53322

CITY PROJECT NO. PK-015	DATE 03/15/2024
STATE AID PROJECT NO. NA	SHEET NO. 3 OF 12

- SAW CUT BITUMINOUS CURB REMOVAL
- ASPHALT REMOVAL
- COMMON EXCAVATION AREA
- SIDEWALK REMOVAL
- POST REMOVAL (173)



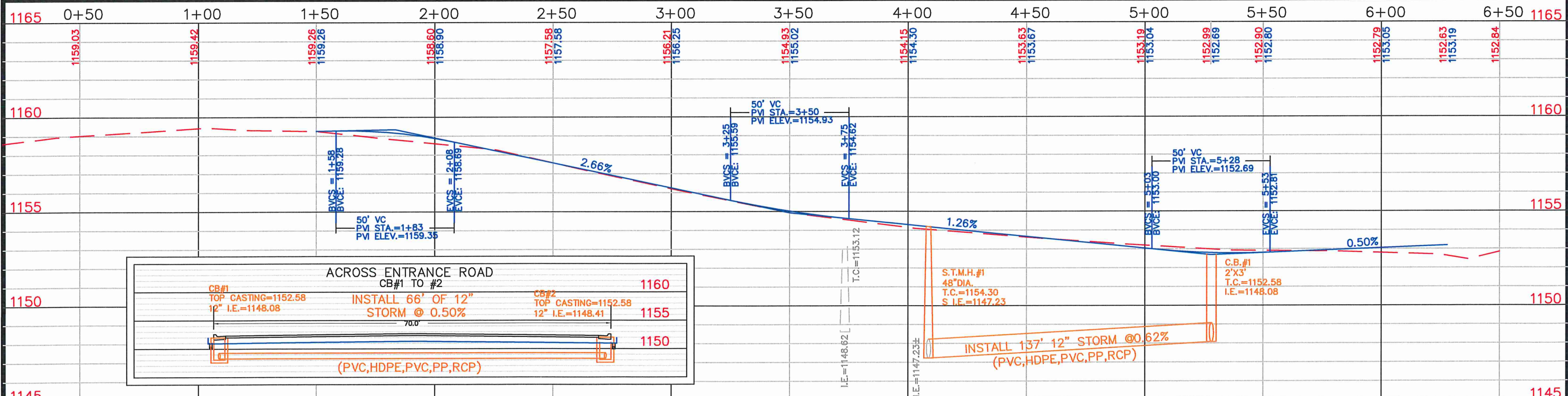
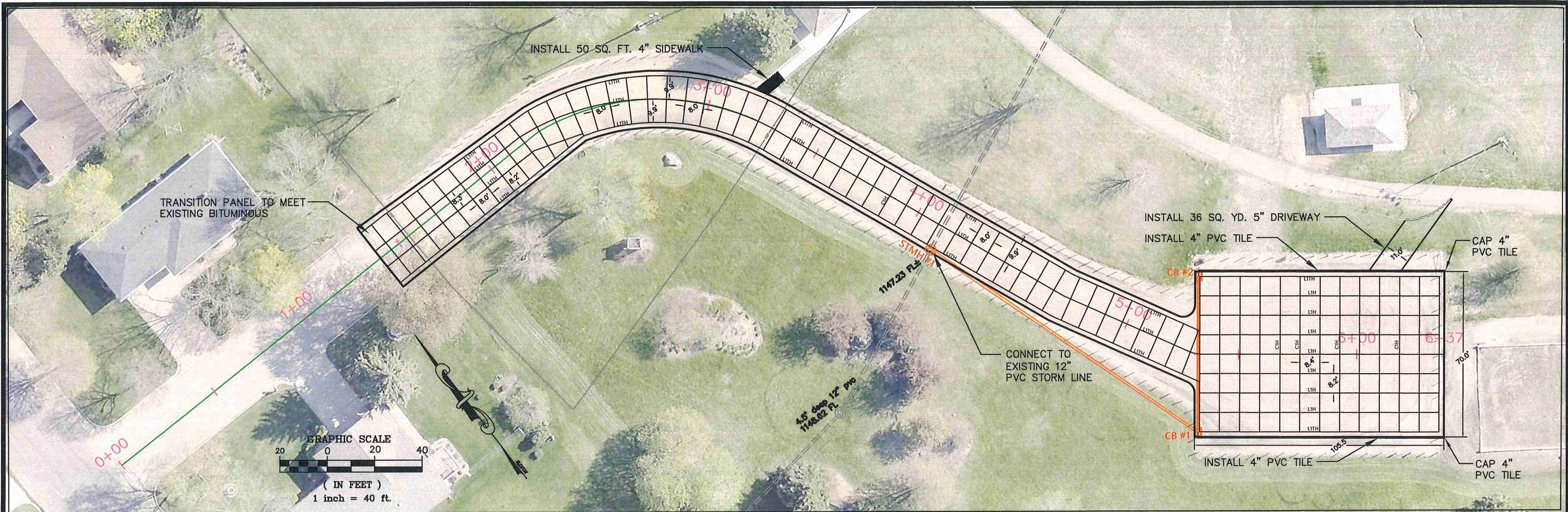
DESIGNED BY: G.J.S.	DATE	REVISIONS	INIT.
DRAWN BY: G.J.S.			
APPROVED BY: J.R.A.			
SCALE: 1"=40'			

ENGINEERING DEPARTMENT
 344 WEST MAIN STREET
 MARSHALL, MINNESOTA
 56258

INDEPENDENCE PARKING LOT
 REMOVAL SHEET

I HEREBY CERTIFY THAT THIS PLAN, SPECIFICATION OR REPORT WAS PREPARED BY ME OR UNDER MY DIRECT SUPERVISION AND THAT I AM A DULY LICENSED ENGINEER UNDER THE LAWS OF THE STATE OF MINNESOTA.
 DATE _____ LICENSE NO. 53322

CITY PROJECT NO. PK-015	DATE 03/15/2024
STATE AID PROJECT NO. NA	SHEET NO. 7 OF 12



DESIGNED BY: G.J.S.	DATE	REVISIONS	INIT.
DRAWN BY: G.J.S.			
APPROVED BY: J.R.A.			
SCALE: 1"=40'			

MARSHALL

ENGINEERING DEPARTMENT
344 WEST MAIN STREET
MARSHALL, MINNESOTA
56258

INDEPENDENCE PARKING LOT

PLAN & PROFILE SHEET

I HEREBY CERTIFY THAT THIS PLAN, SPECIFICATION OR REPORT WAS PREPARED BY ME OR UNDER MY DIRECT SUPERVISION AND THAT I AM A DULY LICENSED ENGINEER UNDER THE LAWS OF THE STATE OF MINNESOTA.

DATE _____ LICENSE NO. 53322

CITY PROJECT NO. PK-015	DATE 03/15/2024
STATE AID PROJECT NO. NA	SHEET NO. 8 OF 12