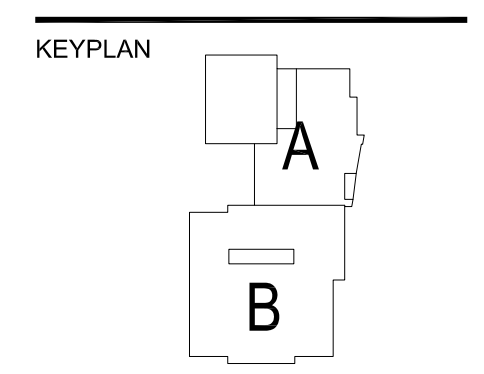


New 2-4 Elementary School
Marshall Public Schools
 EAST SOUTHVIEW DRIVE
 MARSHALL, MN 56258



DRAWN BY
RJS

CHECKED BY
DMM

ISSUED FOR
CONSTRUCTION DOCUMENTS

ISSUE DATE
JAN 7, 2020

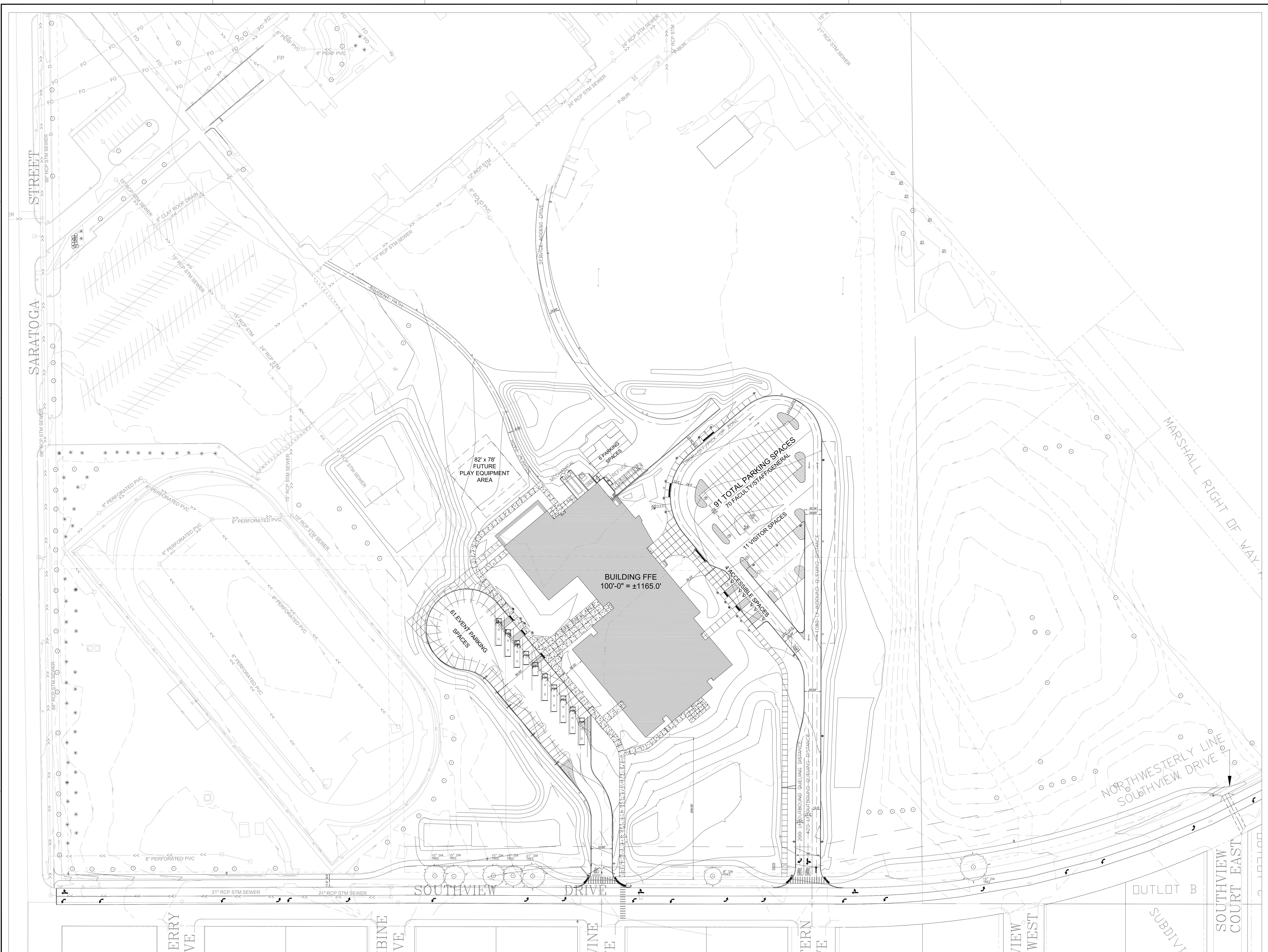
SHEET NAME
SITE LAYOUT PLAN

ATS&R PROJECT NO.
19028

REVISION NO.

SHEET NUMBER

L1.0



1 SITE LAYOUT PLAN
 L1.0 SCALE: 1" = 50'