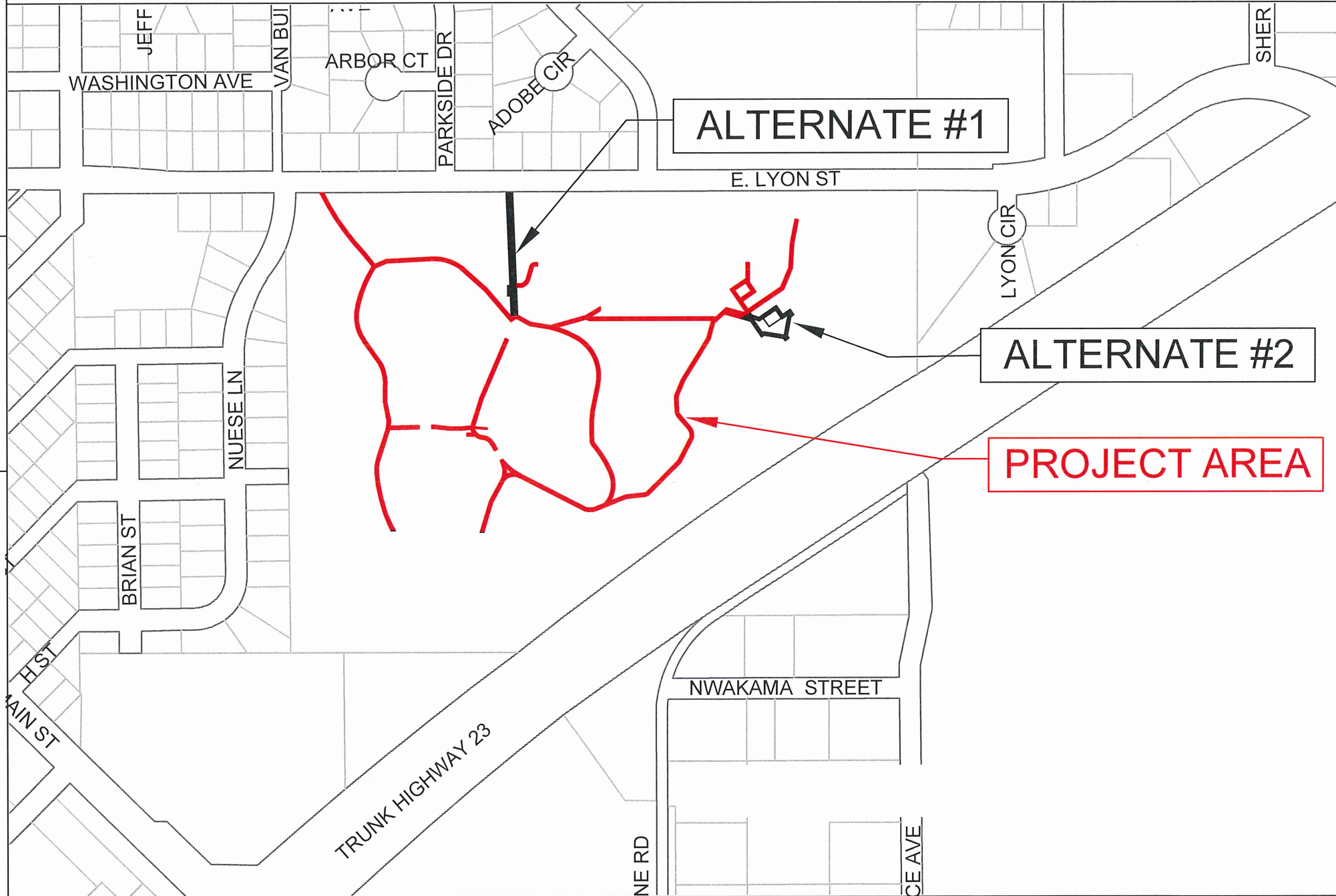


State Of Minnesota City of Marshall, Minnesota Project Number PK-001

Construction Plans for Independence Park Trail Replacement

Independence Park Trail Reconstruction

SECTION 10 T111N, R41W



LEGEND

ALIGNMENT STATIONS	_____
EXISTING GAS LINE	_____
EXISTING COMMUNICATION LINE	_____
EXISTING FIBER LINE	— FIB — FIB —
EXISTING UNDERGROUND POWER	_____
EXISTING STREET LIGHT	⊙
EXISTING CATCH BASIN	□
EXISTING STORM MANHOLE	⊙
EXISTING SANITARY MANHOLE	⊙
EXISTING HYDRANT	⊙
EXISTING WATER VALVE	⊙
NEW CATCH BASIN	□
NEW HYDRANT	⊙
NEW WATER VALVE	⊙
NEW SANITARY MANHOLE	⊙
NEW STORM MANHOLE	⊙
BENCHMARK TOP NUT HYDRANT	⊕

SPECIFICATION REFERENCE

THE 2018 EDITION OF THE MINNESOTA DEPARTMENT OF TRANSPORTATION "STANDARD SPECIFICATIONS FOR CONSTRUCTION" SHALL GOVERN.

ALL TRAFFIC CONTROL DEVICES SHALL CONFORM TO THE LATEST EDITION OF THE MINNESOTA MANUAL ON UNIFORM TRAFFIC CONTROL DEVICES, INCLUDING THE LATEST FIELD MANUAL FOR TEMPORARY TRAFFIC CONTROL ZONE LAYOUTS.

THE CITY OF MARSHALL STANDARD SPECIFICATIONS AND SPECIAL PROVISIONS.

PROJECT LENGTH

GROSS LENGTH MAIN TRAIL	3504	FEET	0.66	MILES
GROSS LENGTH EAST POND	659	FEET	0.13	MILES
GROSS LENGTH ISLAND	662	FEET	0.13	MILES
GROSS LENGTH BALL FIELD	1173	FEET	0.22	MILES
EXCEPTIONS	0	FEET	0	MILES
NET LENGTH	5998	FEET	1.14	MILES

DESIGN DATA

DESIGN SPEED 30 MPH
STOPPING SIGHT DISTANCE BASED ON
3.5' HEIGHT OF EYE
0.5' HEIGHT OF OBJECT

SCALES

PLAN	1"=50'
PROFILE	1"=5'
INDEX MAP	1"=150'
GENERAL LAYOUT	1"=50'


INDEX

SHEET NO.	DESCRIPTION
1	Title Sheet
2	Estimated Quantity/ Note Sheet
3	Typical Section Sheet
4-5	SWPPP Sheets
6	Removal & Erosion Control Sheet
7-15	Plan & Profile Sheets
16	Alternate 1 - Entrance Road
17	Alternate 2 - Baseball Fields

I HEREBY CERTIFY THAT THIS PLAN WAS PREPARED BY ME OR UNDER MY DIRECT SUPERVISION AND THAT I AM A DULY LICENSE PROFESSIONAL ENGINEER UNDER THE LAWS OF THE STATE OF MINNESOTA.

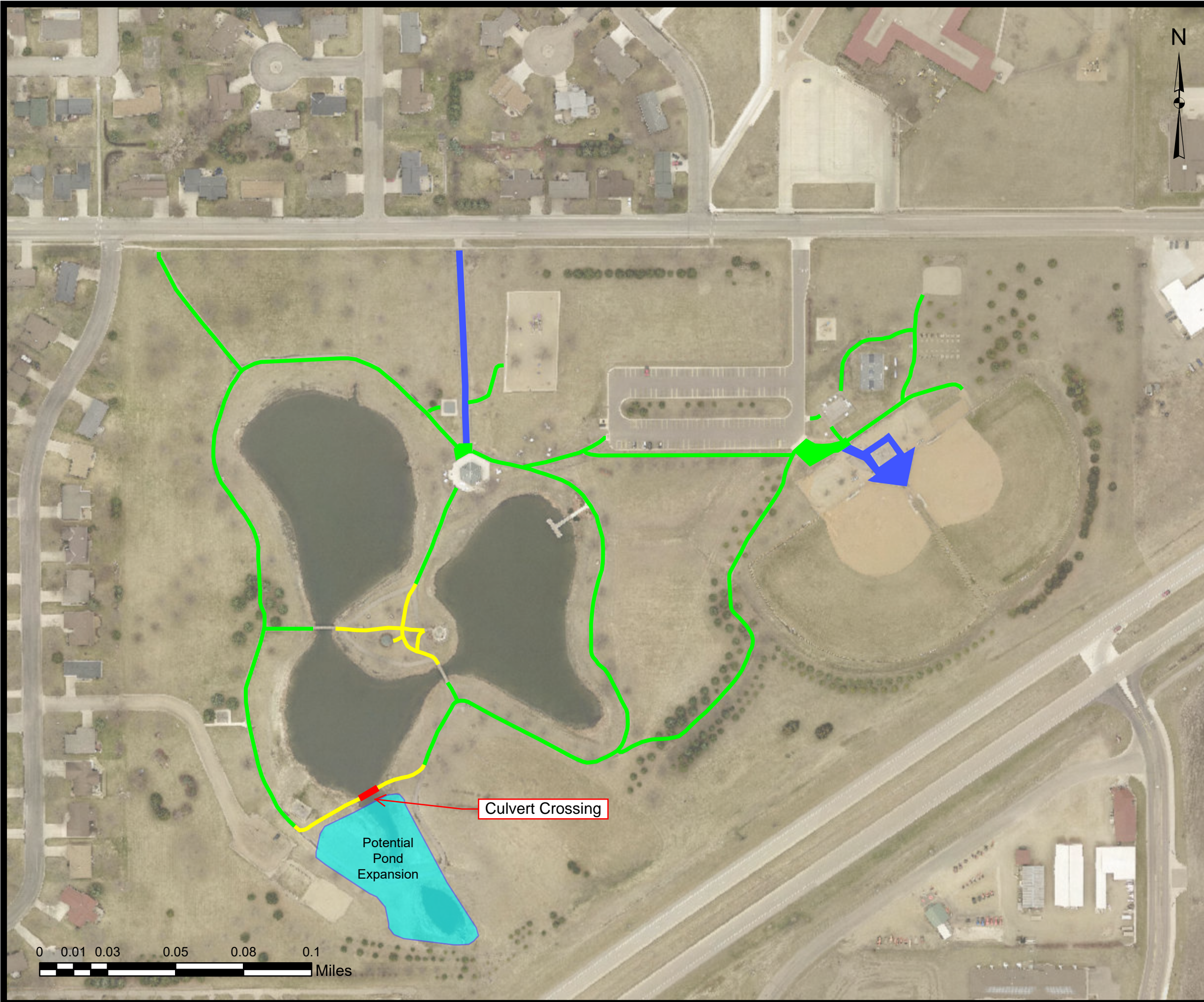
John Paul
APPROVED: CITY ENGINEER, MARSHALL MINNESOTA DATE: 8-11-2021
REG NO 53322

DESIGNED BY: _____	DATE	REVISIONS	INIT.
DRAWN BY: G.J.S.			
APPROVED BY: _____			
SCALE: 1"=50'			


MARSHALL
 ENGINEERING DEPARTMENT
 344 WEST MAIN STREET
 MARSHALL, MINNESOTA
 56258

INDEPENDENCE PARK TRAIL REPLACEMENT
TITLE SHEET

CITY PROJECT NO. PK-001	DATE 08/05/2021
STATE AID PROJECT NO.	SHEET NO. 1 OF 17



MARSHALL
MINNESOTA

Independence Park Trail Replacement Project

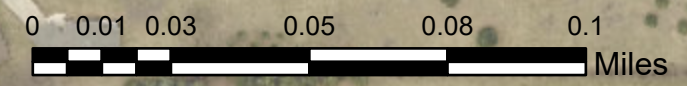
Project Area

-  Replace Concrete Trails
-  Realigned Concrete Trails
-  Alternative Bid Options
-  Proposed Culvert Crossing (Separate Project)
-  Proposed Stormwater Pond Expansion (Separate Project)

8/20/21

** Disclaimer: The City of Marshall does not guarantee the accuracy of the data included on this map.

This map data is for referencing purposes only.



Culvert Crossing

Potential
Pond
Expansion