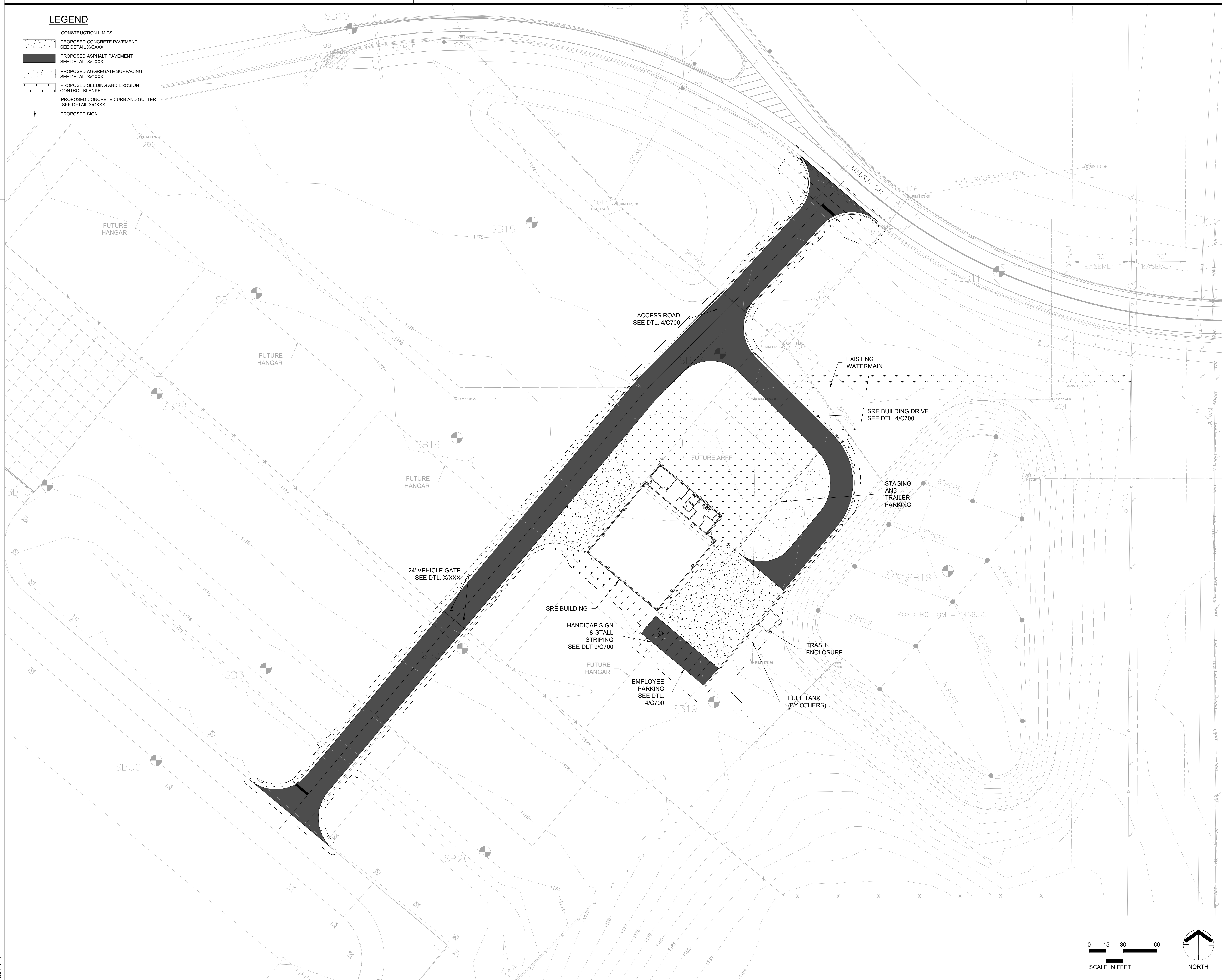
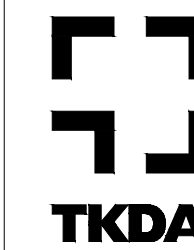


LEGEND

- CONSTRUCTION LIMITS
- ▨ PROPOSED CONCRETE PAVEMENT
SEE DETAIL X/CXXX
- ▩ PROPOSED ASPHALT PAVEMENT
SEE DETAIL X/CXXX
- ▧ PROPOSED AGGREGATE SURFACING
SEE DETAIL X/CXXX
- ▤ PROPOSED SEEDING AND EROSION
CONTROL BLANKET
- ▥ PROPOSED CONCRETE CURB AND GUTTER
SEE DETAIL X/CXXX
- ▧ PROPOSED SIGN



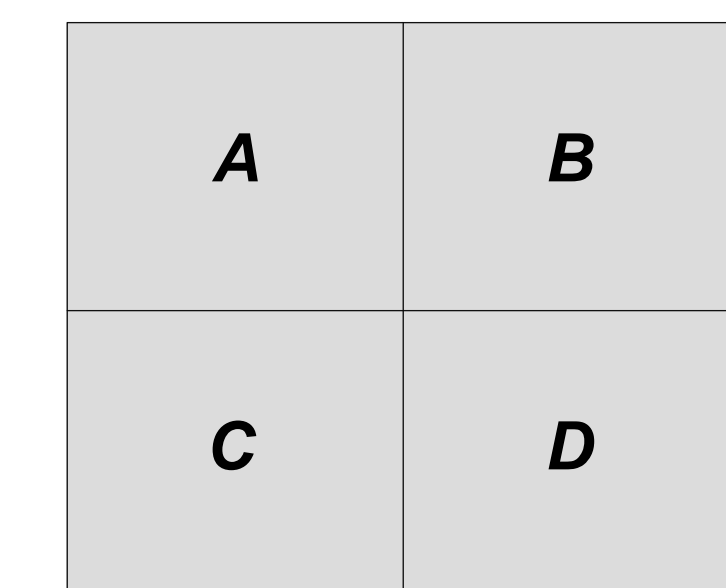
**SOUTHWEST MINNESOTA
REGIONAL AIRPORT**
1650 WEST COLLEGE DRIVE
MARSHALL, MINNESOTA



444 Cedar Street, Suite 1500
Saint Paul, MN 55101
612.292.4400
tkda.com

CONSULTANT DISCIPLINE:
CONSULTANT NAME
Consultant Address
Consultant Phone Number
Consultant Web Address

**MARSHALL
SRE BUILDING**



KEY PLAN



ALL CONTRACTORS AND SUB-CONTRACTORS SHALL
VERIFY ALL DIMENSIONS BY MEASUREMENT AT THE
BUILDING AND/OR SITE



BAR IS ONE INCH ON ORIGINAL DRAWING. IF NOT ONE
INCH ON THIS DRAWING ADJUST SCALES ACCORDINGLY.

| NO. | DATE | ISSUE RECORD |
|-----|------|--------------|
| | | |
| | | |
| | | |
| | | |
| | | |
| | | |
| | | |
| | | |
| | | |
| | | |
| | | |
| | | |

**ISSUED FOR REVIEW ONLY
NOT FOR CONSTRUCTION
2/07/2023**

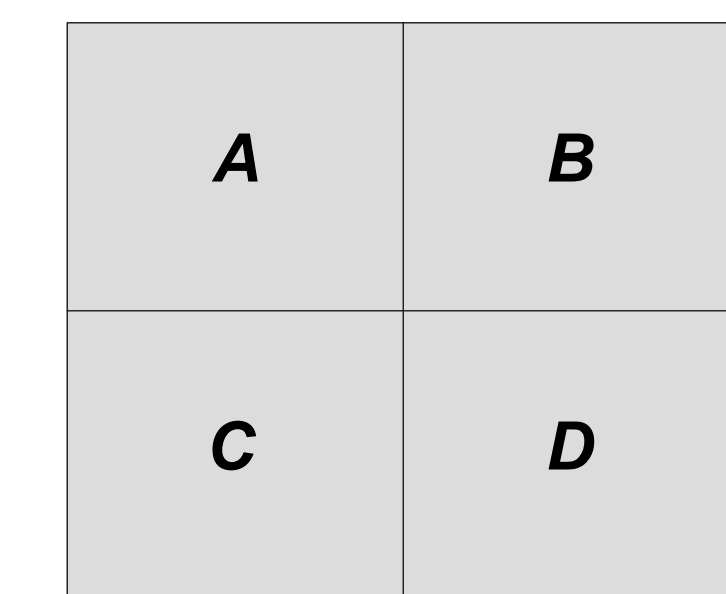
DESIGNED: WDD DRAWN: _____ CHECKED: _____ BDP

SITE LAYOUT

C200

18338.001

PLOTTED:
FILE PATH:



KEY PLAN

ALL CONTRACTORS AND SUB-CONTRACTORS SHALL VERIFY ALL DIMENSIONS BY MEASUREMENT AT THE BUILDING AND/OR SITE.

BAR IS ONE INCH ON ORIGINAL DRAWING. IF NOT ONE INCH ON THIS DRAWING ADJUST SCALES ACCORDINGLY.

| NO. | DATE | ISSUE RECORD |
|-----|------|--------------|
| | | |
| | | |
| | | |
| | | |
| | | |
| | | |
| | | |
| | | |
| | | |
| | | |

**ISSUED FOR REVIEW ONLY
NOT FOR CONSTRUCTION
2/07/2023**

DESIGNED _____ DRAWN _____ CHECKED _____
DKS DKS DKS

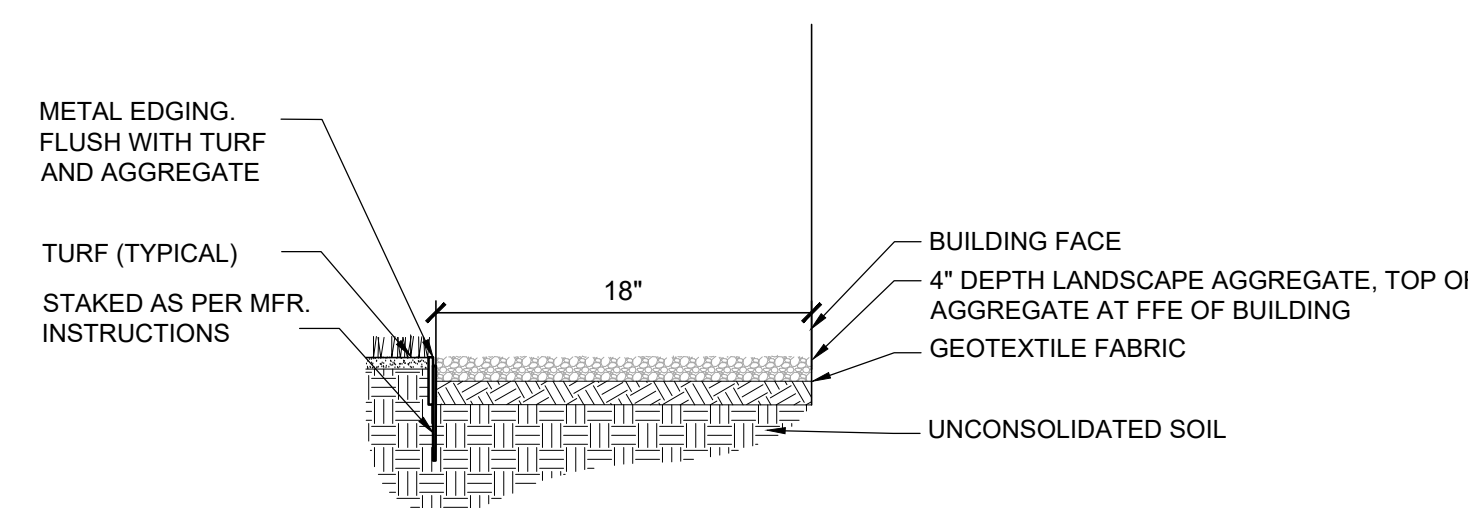
SITE LANDSCAPE PLAN

C600

18338.001

PLANT SCHEDULE

| TREES | CODE | BOTANICAL / COMMON NAME | SIZE | CONTAINER | QTY | DETAIL | REMARKS |
|------------|---------|--|-----------|-----------|-----|--------|---------|
| | PIN BAN | Pinus banksiana / Jack Pine | 8' Ht. | B&B | 12 | | |
| | PT | Populus tremuloides / Quaking Aspen | 1.5" Cal. | B&B | 4 | | |
| | SYR RET | Syringa reticulata / Japanese Tree Lilac | 1.5" Cal. | B&B | 4 | | |
| SHRUBS | CODE | BOTANICAL / COMMON NAME | SIZE | CONTAINER | QTY | DETAIL | REMARKS |
| | DIE LON | Diervilla lonicera / Dwarf Bush Honeysuckle | 5 gal. | Pot | 12 | | |
| | JUN FOR | Juniperus chinensis 'Sea Green' / Sea Green Juniper | 5 gal. | B&B | 3 | | |
| | PRU CIS | Prunus x cistena / Purple Leaf Sand Cherry | 5 gal. | Pot | 19 | | |
| | RHU GRO | Rhus aromatica 'Gro-Low' / Gro-Low Fragrant Sumac | 5 gal. | Pot | 10 | | |
| | SAL PUR | Salix purpurea 'Nana' / Dwarf Purple Osier Willow | 5 gal. | Pot | 9 | | |
| GRASSES | CODE | BOTANICAL / COMMON NAME | SIZE | CONTAINER | QTY | DETAIL | REMARKS |
| | SCH ST2 | Schizachyrium scoparium 'Standing Ovator' / Standing Ovation Little Bluestem | 1 gal. | Pot | 13 | | |
| PERENNIALS | CODE | BOTANICAL / COMMON NAME | SIZE | CONTAINER | QTY | DETAIL | REMARKS |
| | HEM PAR | Hemerocallis x 'Pardon Me' / Pardon Me Daylily | 1 gal. | Pot | 10 | | |
| | NEP WAL | Nepeta x faasseni 'Walker's Low' / Walker's Low Catmint | 1 gal. | Pot | 11 | | |
| | RUD FU2 | Rudbeckia hirta fulgida / Black-eyed Susan | 1 gal. | Pot | 6 | | |
| | SED AU3 | Sedum x Autumn Joy / Autumn Joy Sedum | 1 gal. | Pot | 6 | | |



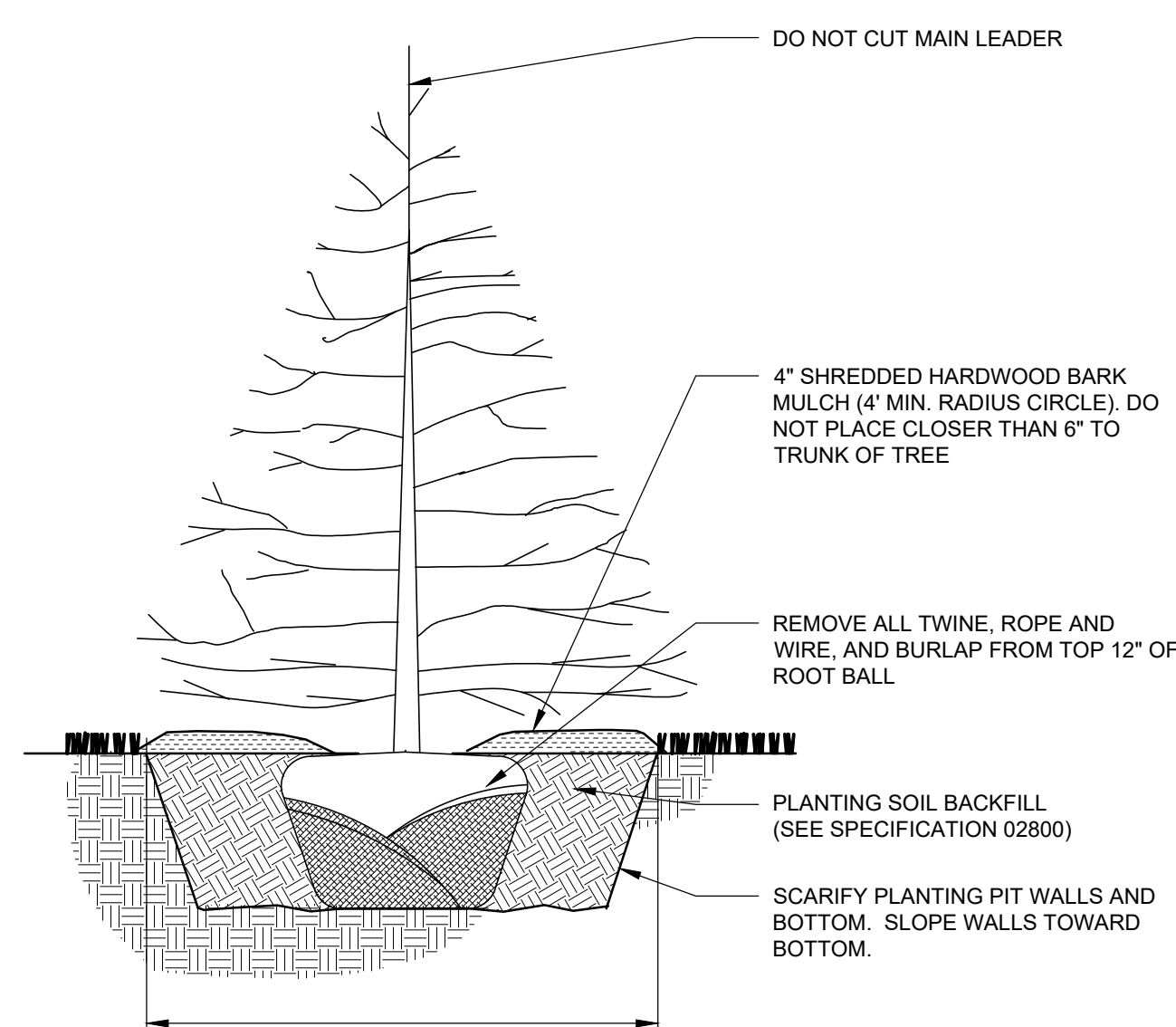
6 BUILDING MAINTENANCE ROCK MULCH
NO SCALE

GENERAL NOTES

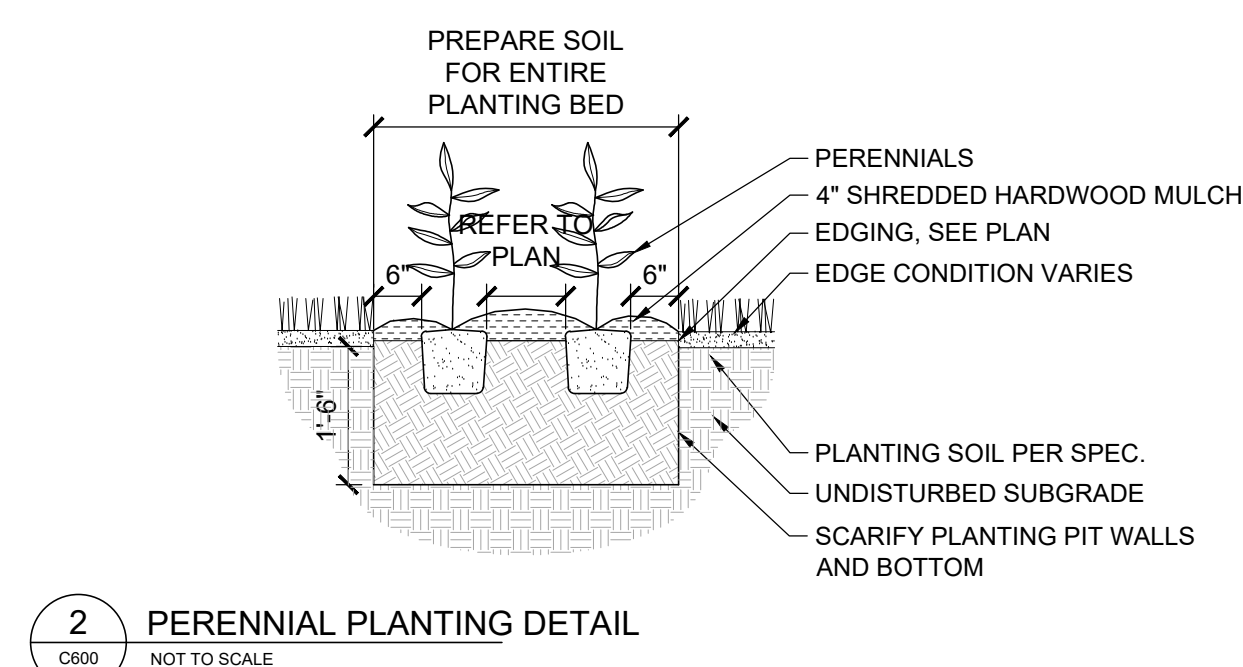
- SEE CIVIL DRAWINGS FOR SITE LAYOUT.
- ALL DISTURBED AREAS NOT DENOTED WITH TURF OR STORMWATER BASIN SEED MIX TO BE RESTORED WITH TURF SEED.

PLANTING NOTES

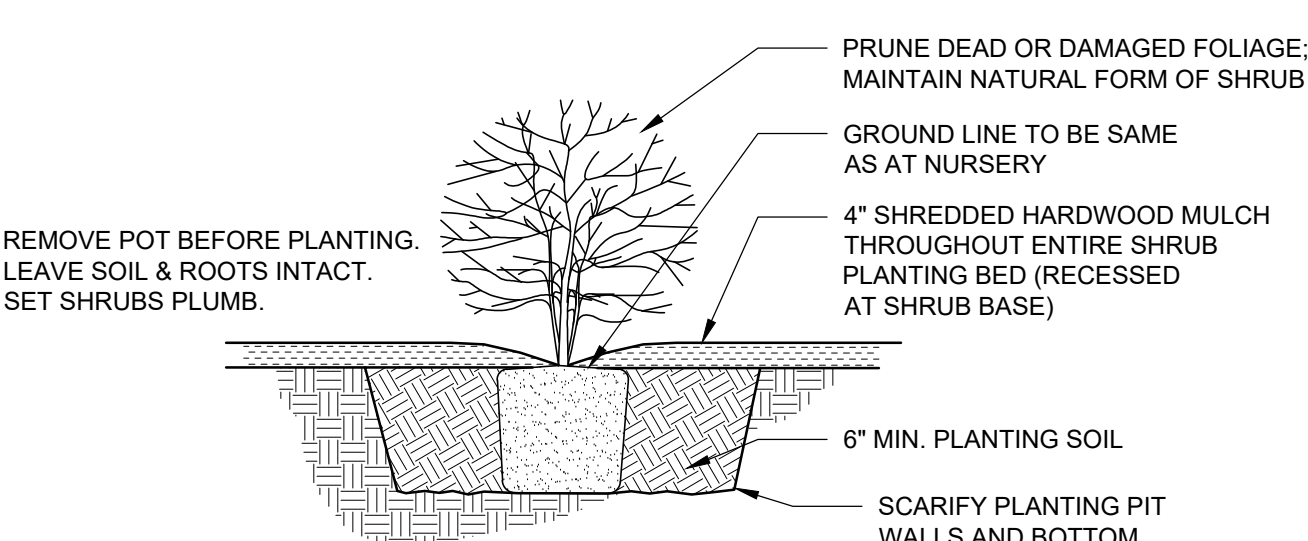
- STRIP AND STOCKPILE TOPSOIL FOR RE-USE.
- PROVIDE 6" TOPSOIL ON ALL AREAS TO RECEIVE SEED.
- WHERE SEED ABUTS PAVED SURFACE, FINISHED GRADE OF SEED SHALL BE 1" BELOW SURFACE OF PAVEMENT.



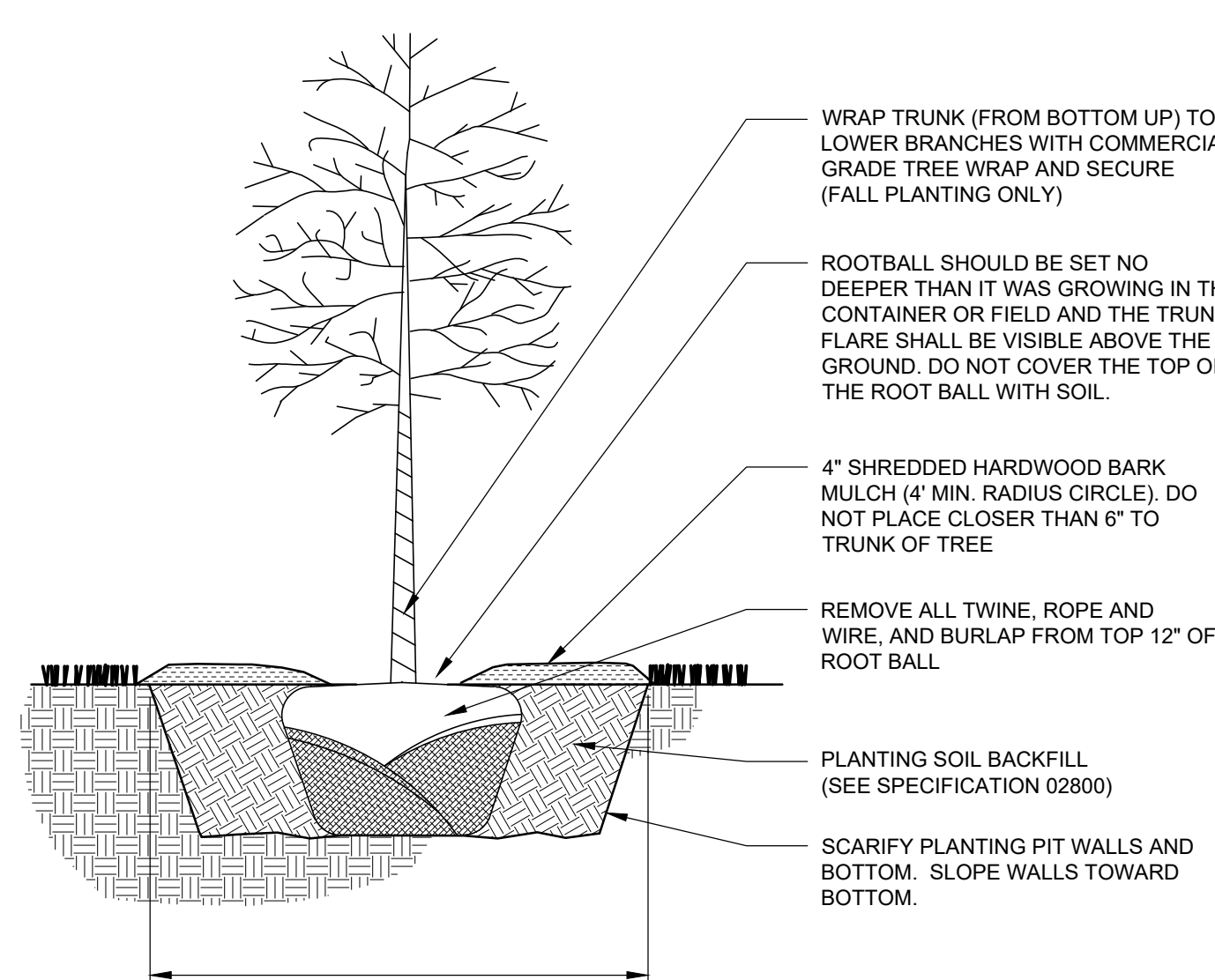
1 EVERGREEN TREE PLANTING DETAIL
NOT TO SCALE



2 PERENNIAL PLANTING DETAIL
NOT TO SCALE

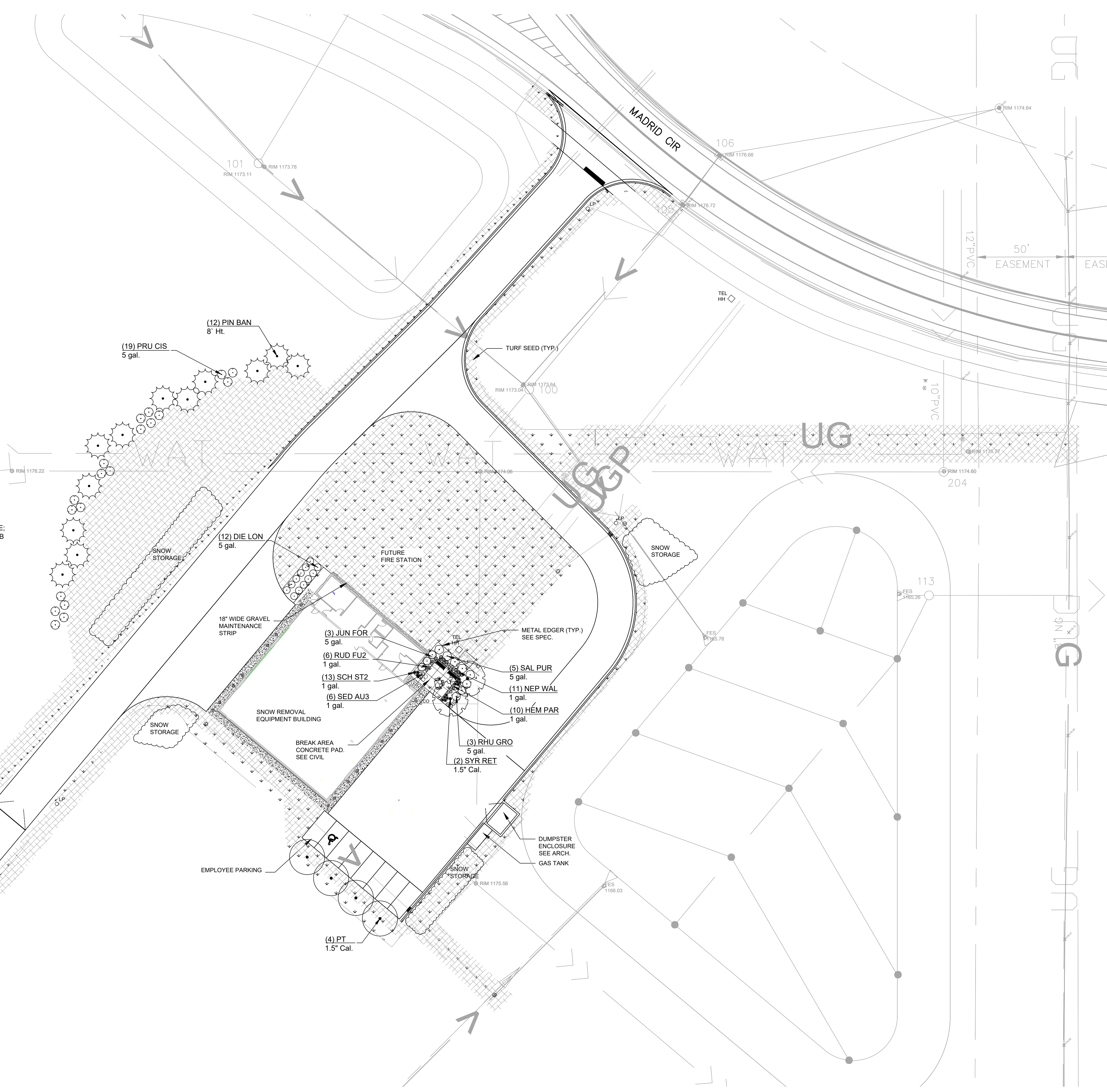


3 SHRUB PLANTING DETAIL
NOT TO SCALE



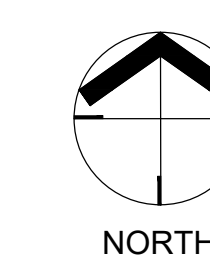
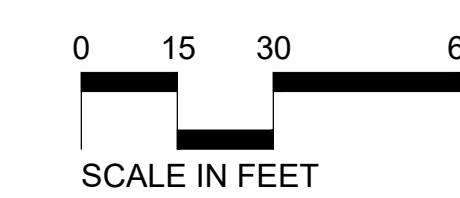
4 DECIDUOUS TREE PLANTING DETAIL
NOT TO SCALE

5 SITE LANDSCAPE PLAN
SCALE: 1"=30'



SITE FURNITURE SCHEDULE: REFER TO SPEC FOR MORE INFORMATION

| QUANTITY | DESCRIPTION |
|----------|---|
| 2 | DUMOR BENCH 58 SERIES, 6' LENGTH, SURFACE MOUNT, BLACK |
| 1 | DUMOR TABLE 448-43, 3 SEAT W/ ADA, SURFACE MOUNT, BLACK |
| 1 | DUMOR RECYCLING UNIT 437-40-0001, SURFACE MOUNT, BLACK |





MARSHALL
 CULTIVATING THE BEST IN US
 SOUTHWEST MINNESOTA
 REGIONAL AIRPORT
 1650 WEST COLLEGE DRIVE
 MARSHALL, MINNESOTA

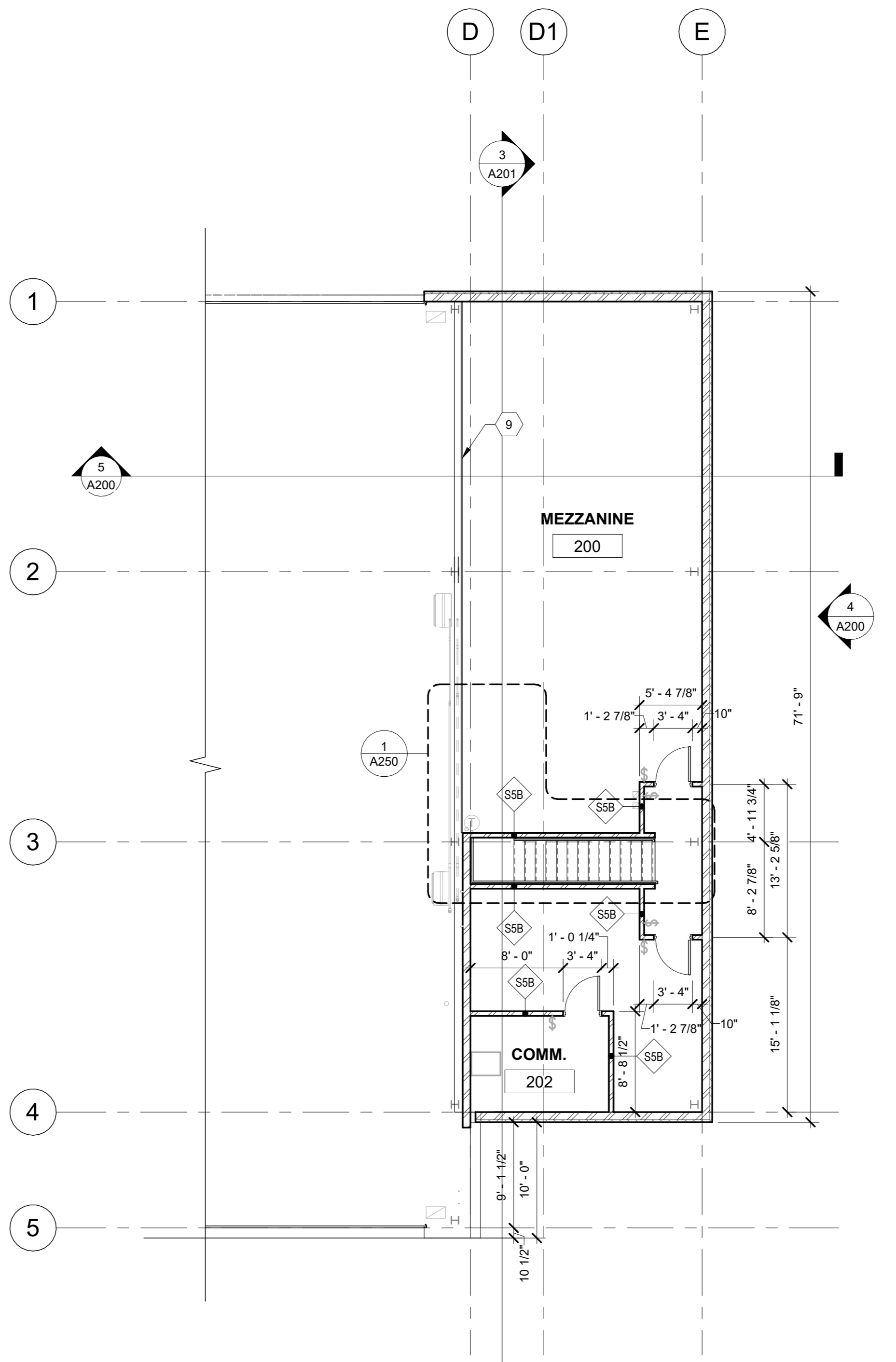
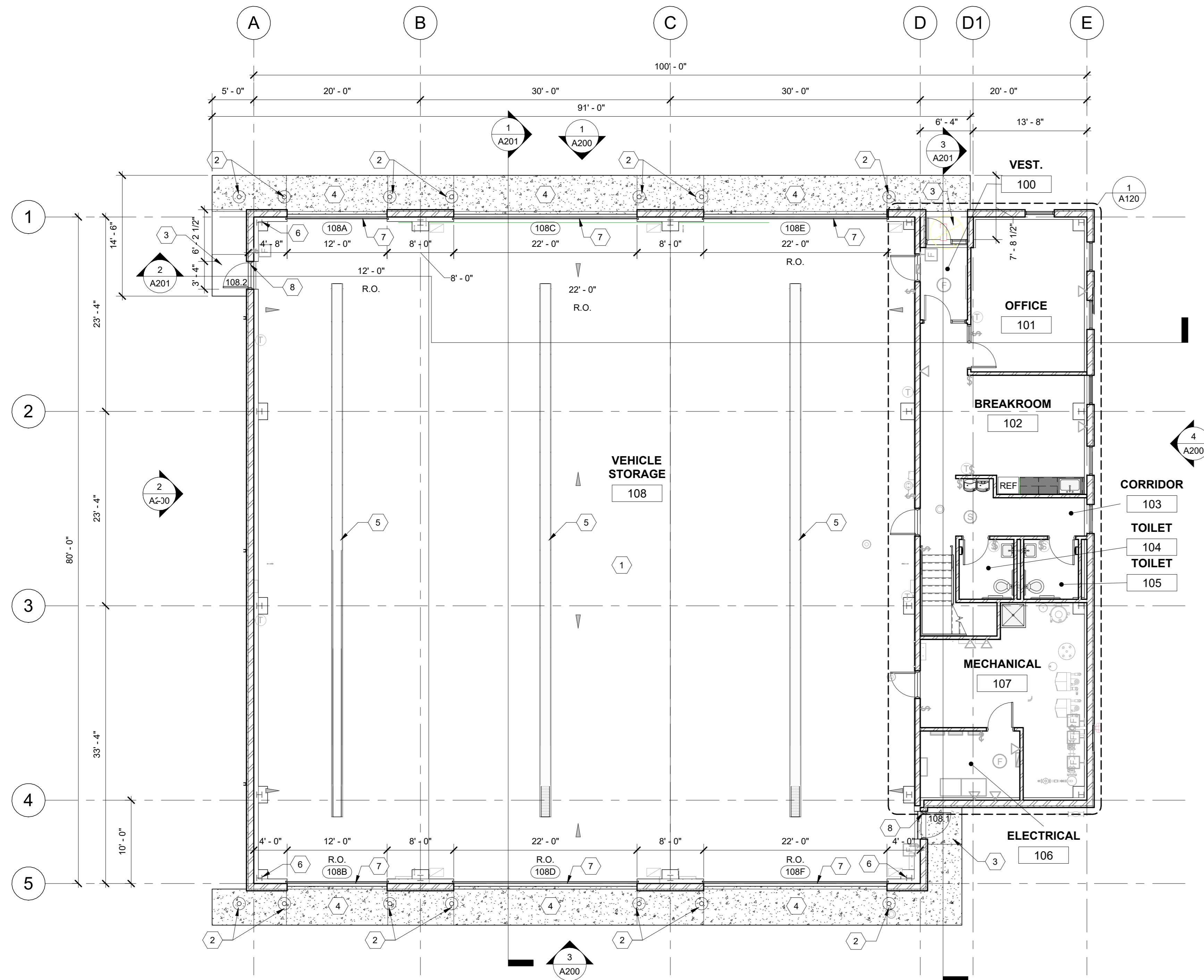
444 Cedar Street, Suite 1500
 Saint Paul, MN 55101
 612.292.4400
 tkda.com

CONSULTANTS:
CONSULTANT DISCIPLINE:
CONSULTANT NAME:
 Consultant Address
 Consultant Phone Number
 Consultant Web Address

MARSHALL SRE BUILDING

GENERAL NOTES

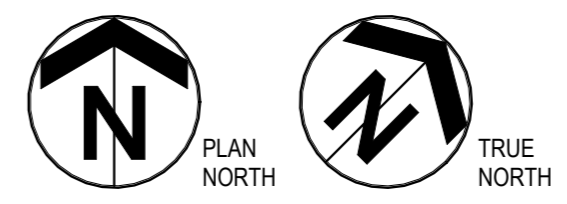
- REFER TO MECHANICAL AND ELECTRICAL DRAWINGS FOR ADDITIONAL ITEMS AND INFORMATION.
- CONTRACTOR TO VERIFY ALL EXISTING CONDITIONS AND DIMENSIONS.



1 FLOOR PLAN - MAIN LEVEL
 A100 1/8" = 1'-0"



2 FLOOR PLAN - MEZZANINE
 A100 1/8" = 1'-0"



KEYNOTES

- CONCRETE SLAB ON GRADE WITH HYDRONIC HEAT LOOPS. SLOPE TO DRAINS.
- CONCRETE FILLED STEEL BOLLARD (OSHA YELLOW). SEE STRUCTURAL.
- REINFORCED CONCRETE STOOP WITH FROST FOUNDATION. SEE STRUCTURAL.
- REINFORCED CONCRETE APRON, TYPICAL.
- HEAVY DUTY TRENCH DRAIN WITH METAL GRATING. SEE MECHANICAL.
- RIGID BUILDING FRAME, TYPICAL.
- INSULATED OVERHEAD SECTIONAL DOOR WITH VISION PANELS AND OPERATOR.
- 3'-0" X 7'-0" HOLLOW METAL SERVICE DOOR AND FRAME W/ HARDWARE AS REQ'D.
- METAL GUARD RAIL, TYPICAL.

0 1
 BAR IS ONE INCH ON ORIGINAL DRAWING. IF NOT ONE INCH ON THIS DRAWING ADJUST SCALES ACCORDINGLY.

DESIGN DEVELOPMENT

| NO. | DATE | ISSUE RECORD |
|-----|------|--------------|
| | | |
| | | |
| | | |
| | | |
| | | |
| | | |
| | | |
| | | |
| | | |
| | | |
| | | |

**ISSUED FOR REVIEW ONLY
 NOT FOR CONSTRUCTION
 2/07/2023**

DRAWING SYMBOL LEGEND

| FLOOR PLAN SYMBOLS | | EXIST WALL TO REMAIN | |
|--------------------|---|----------------------|---|
| | EXISTING DOOR TO REMAIN | | EXIST WALL TO REMAIN |
| | DOOR *REFER TO DOOR SCHED. | | METAL STUD WALL *REF WALL TYPES |
| | INTERIOR OR EXTERIOR WINDOW *REF WINDOW TYPE | | C.M.U. WALL *REF WALL TYPES |
| | LOUVER *REF TO MECHANICAL | | P/C WALL (INSULATED) *REF WALL TYPES |
| | RECESSED CABINET (FEC) | | CONC. WALL *REF WALL TYPES |
| | BRACKET MTD. (FE) | | CHAINLINK FENCE *REF WALL TYPES |
| | | | ACCORDIAN PARTITION |

DESIGNED ADG DRAWN TE CHECKED Checker
FLOOR PLANS

A100

18338.001



MARSHALL
CULTIVATING THE BEST IN US
SOUTHWEST MINNESOTA
REGIONAL AIRPORT
1650 WEST COLLEGE DRIVE
MARSHALL, MINNESOTA

444 Cedar Street, Suite 1500
Saint Paul, MN 55101
612.292.4400
tkda.com

CONSULTANTS:
CONSULTANT DISCIPLINE:
CONSULTANT NAME:
Consultant Address
Consultant Phone Number
Consultant Web Address

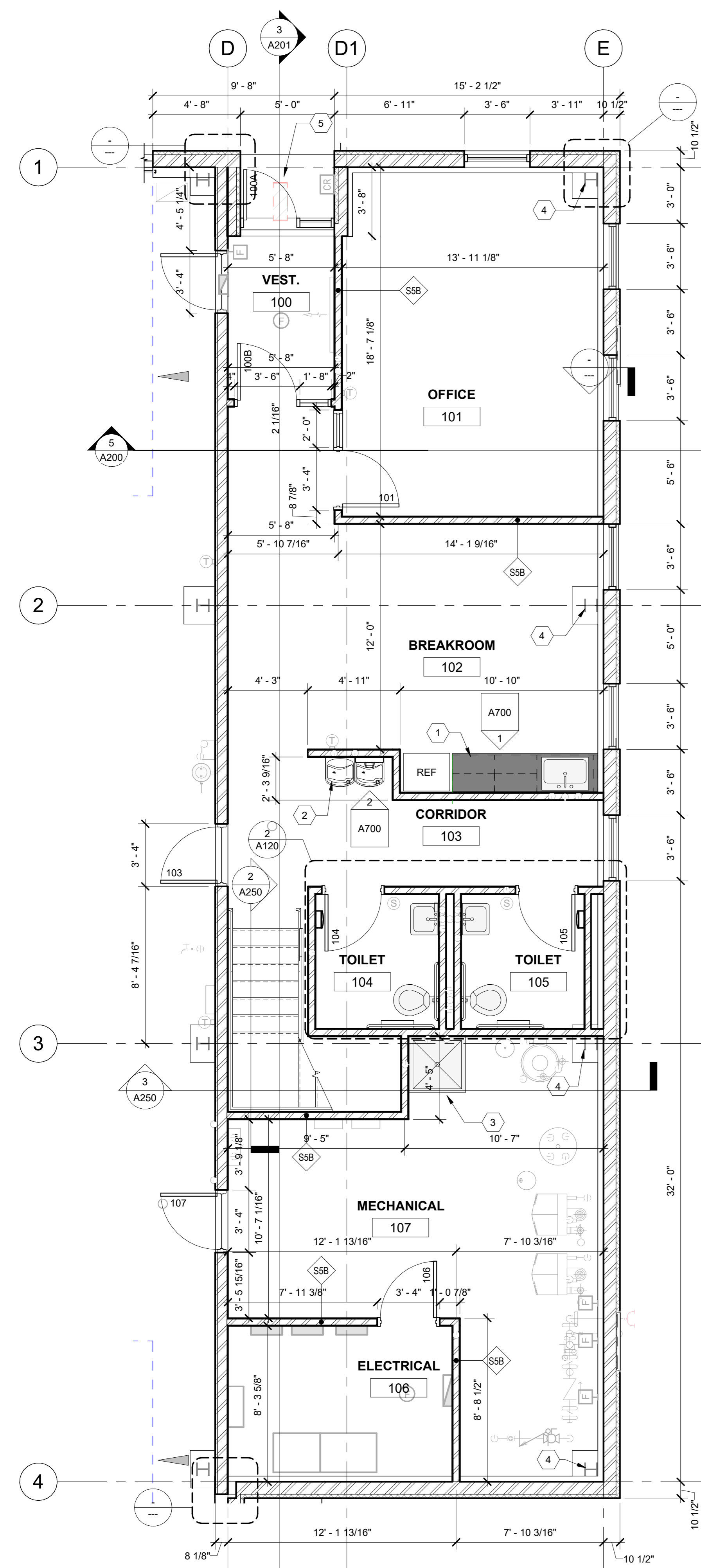
MARSHALL SRE BUILDING

GENERAL NOTES

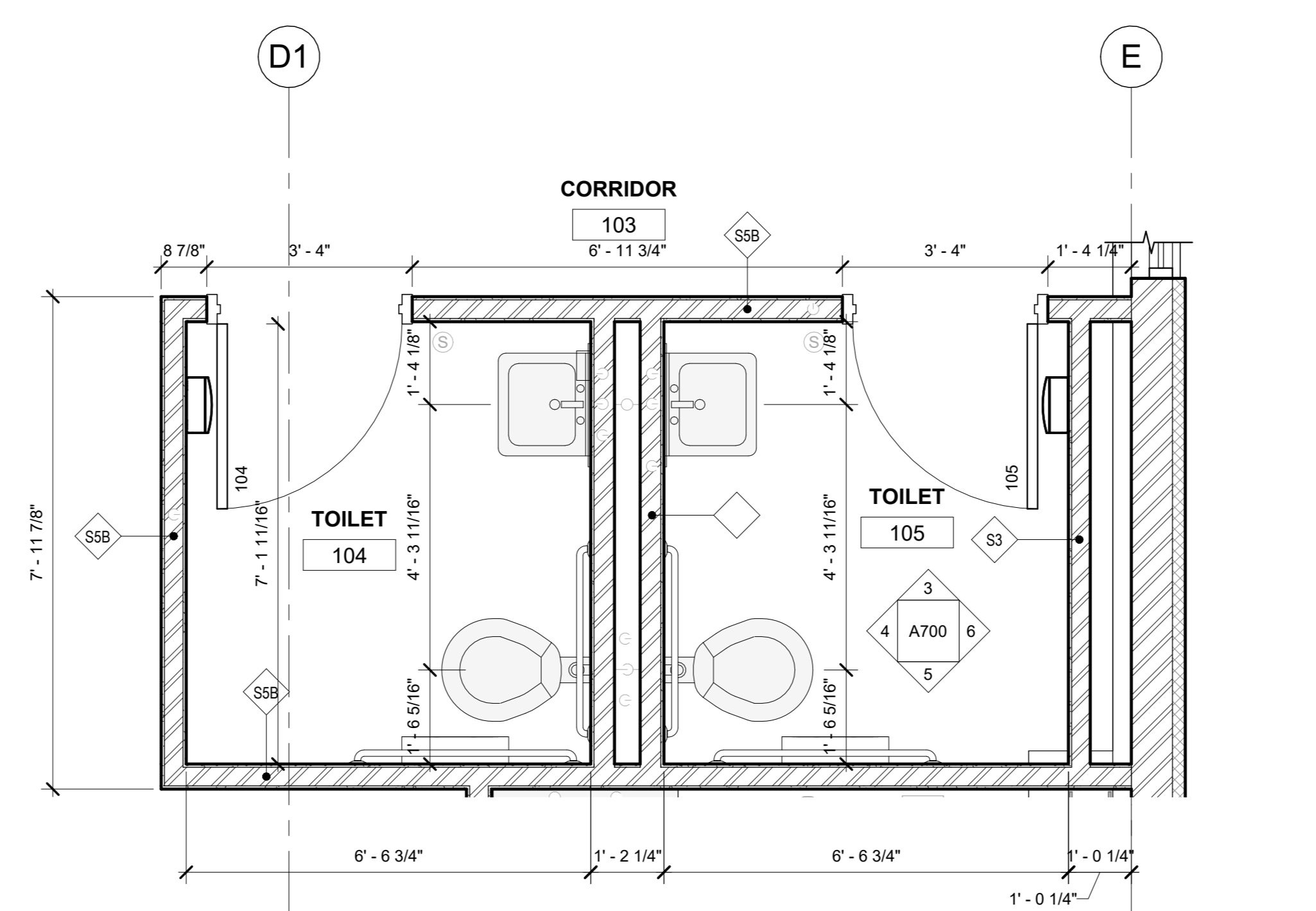
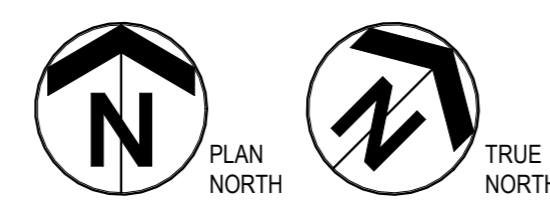
- REFER TO MECHANICAL AND ELECTRICAL DRAWINGS FOR ADDITIONAL ITEMS AND INFORMATION.
- CONTRACTOR TO VERIFY ALL EXISTING CONDITIONS AND DIMENSIONS.

KEYNOTES

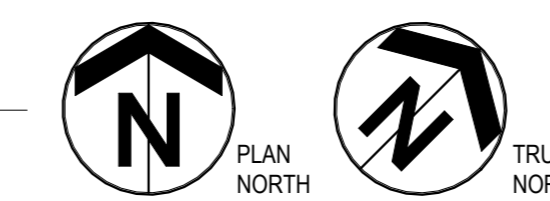
- KITCHENETTE.
- WATER COOLER.
- UTILITY SINK.
- RIGID BUILDING FRAME, TYPICAL.
- REINFORCED CONCRETE STOOP WITH FROST FOUNDATION. SEE STRUCTURAL.



1 ENLARGED FLOOR PLAN
A120 1/4" = 1'-0"



2 ENLARGED TOILET ROOMS
A120 1/2" = 1'-0"



| DRAWING SYMBOL LEGEND | | | |
|-----------------------|--|----------------------|--------------------------------------|
| FLOOR PLAN SYMBOLS | | EXIST WALL TO REMAIN | |
| | EXISTING DOOR TO REMAIN | | METAL STUD WALL *REF WALL TYPES |
| | DOOR *REFER TO DOOR SCHED. | | C.M.U. WALL *REF WALL TYPES |
| | INTERIOR OR EXTERIOR WINDOW *REF WINDOW TYPE | | P/C WALL (INSULATED) *REF WALL TYPES |
| | LOUVER *REF TO MECHANICAL | | CONC. WALL *REF WALL TYPES |
| | RECESSED CABINET (FEC) | | CHAINLINK FENCE *REF WALL TYPES |
| | BRACKET MTD. (FE) | | ACCORDIAN PARTITION |

0 1
BAR IS ONE INCH ON ORIGINAL DRAWING. IF NOT ONE INCH ON THIS DRAWING ADJUST SCALES ACCORDINGLY.

DESIGN DEVELOPMENT

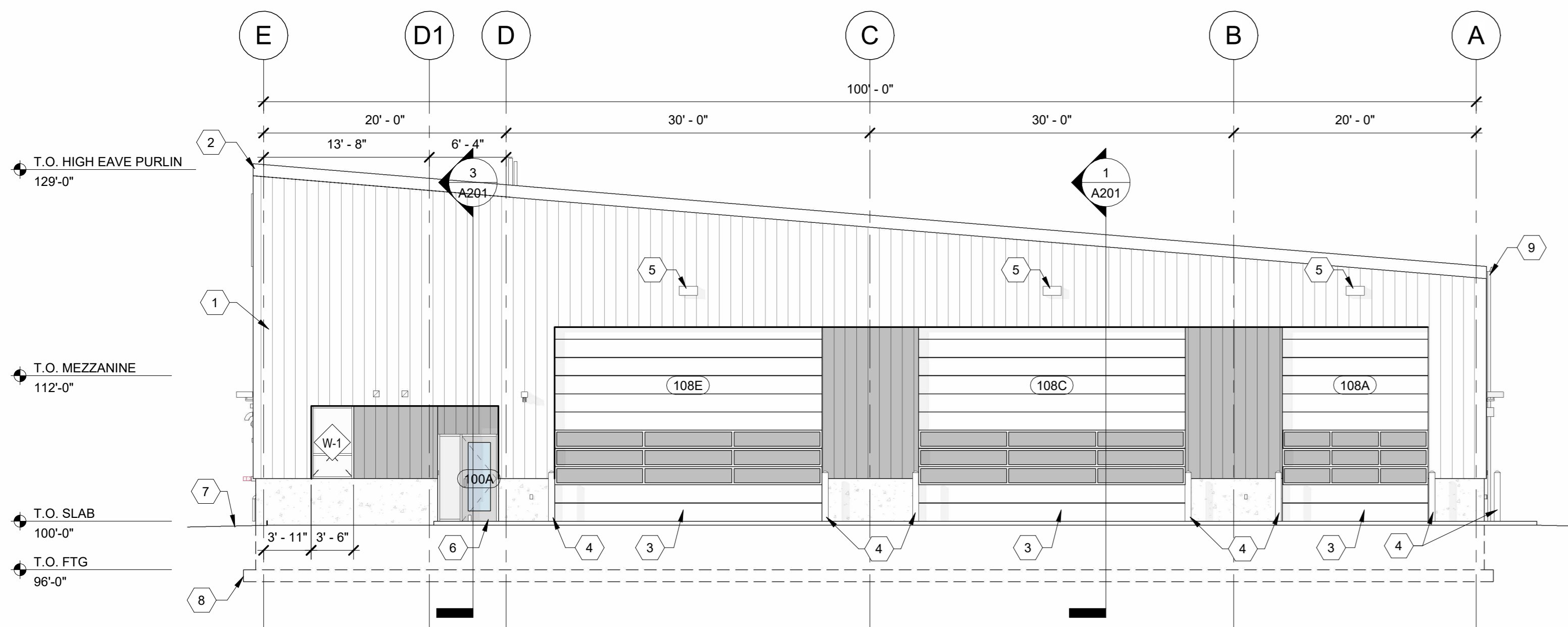
| NO. | DATE | ISSUE RECORD |
|-----|------|--------------|
| | | |
| | | |
| | | |
| | | |
| | | |
| | | |
| | | |
| | | |
| | | |
| | | |
| | | |
| | | |
| | | |
| | | |
| | | |
| | | |
| | | |
| | | |
| | | |
| | | |
| | | |
| | | |

ISSUED FOR REVIEW ONLY
NOT FOR CONSTRUCTION
2/07/2023

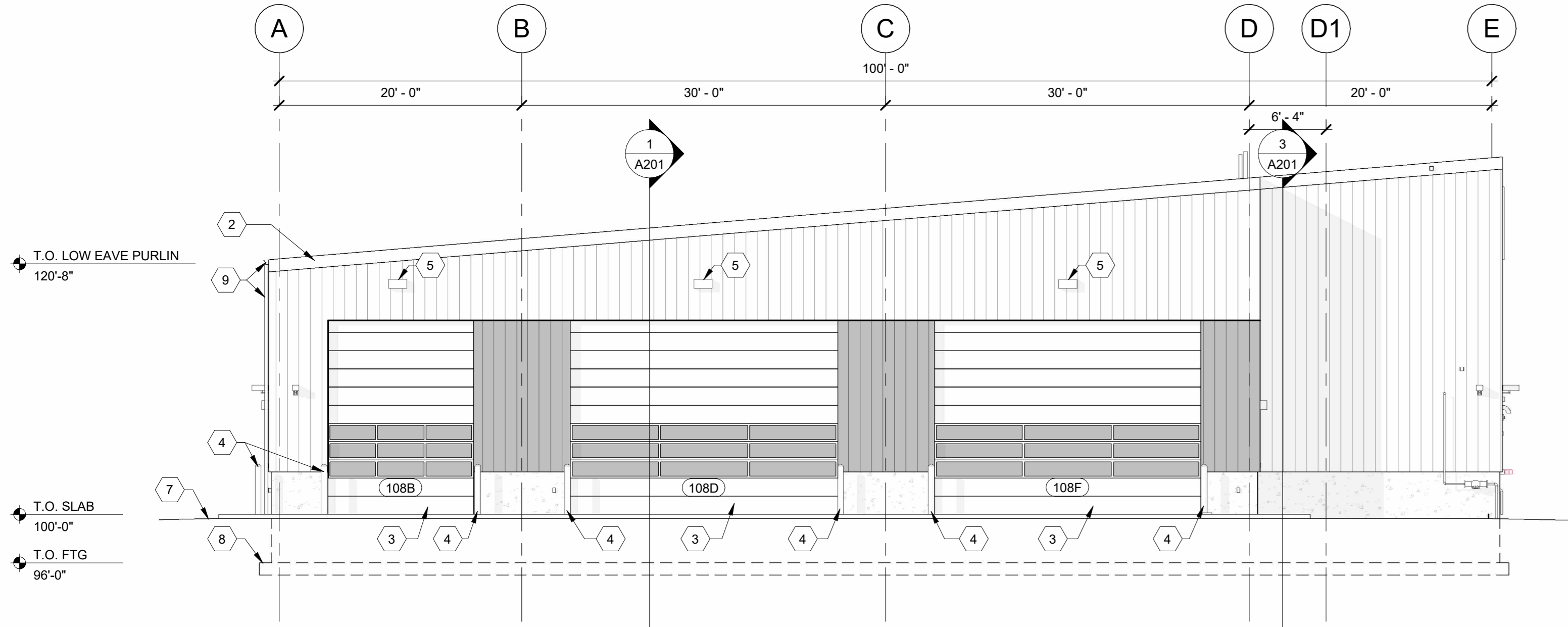
DESIGNED ADG DRAWN TEL CHECKED
ENLARGED PLANS

A120

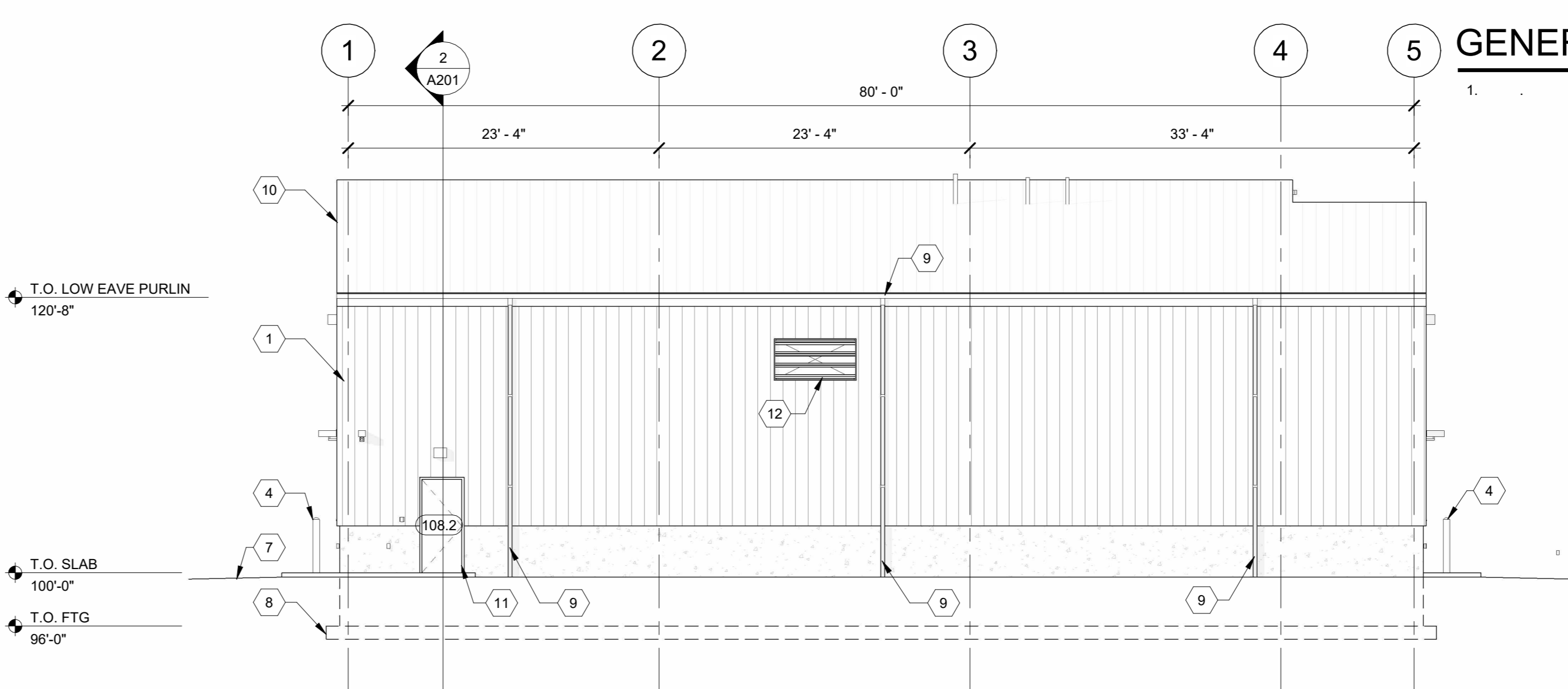
18338.001



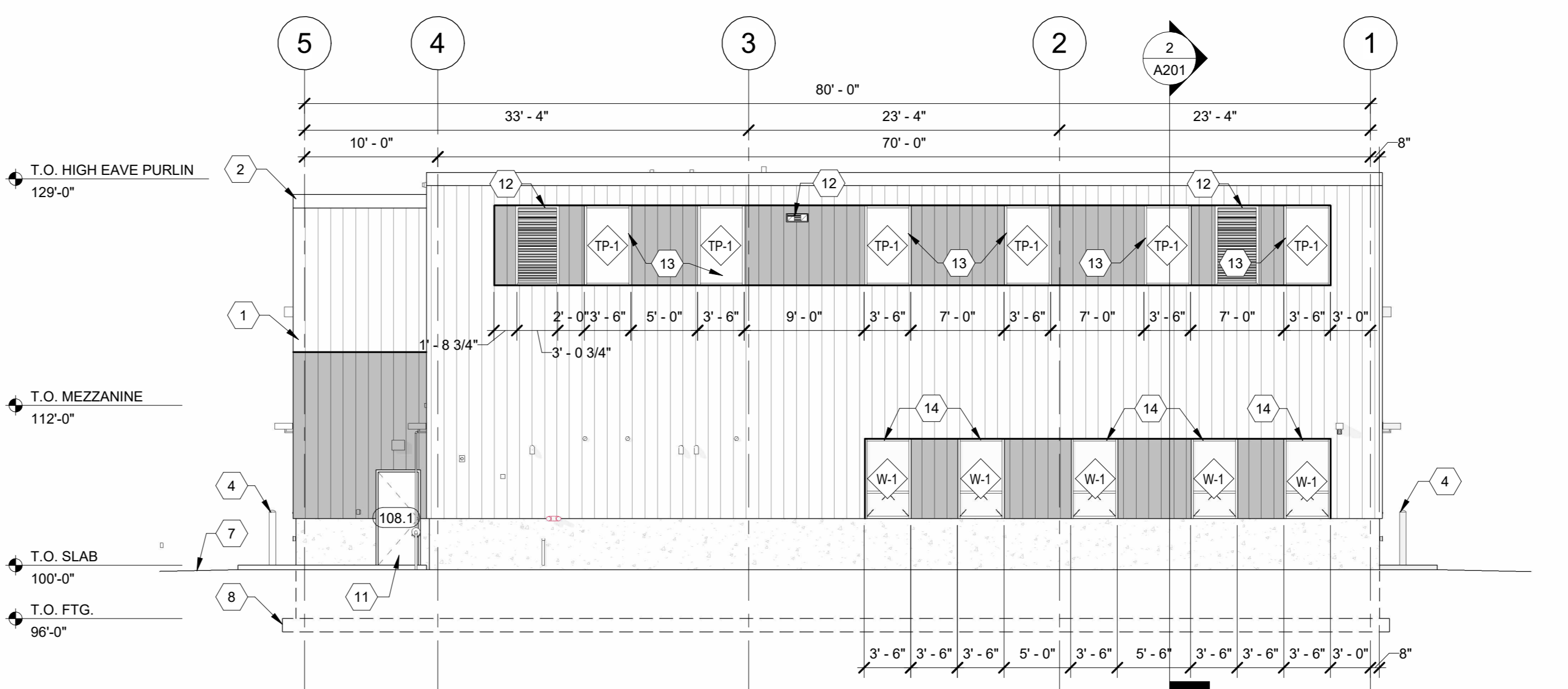
1 NORTH ELEVATION
A200
1/8" = 1'-0"



3 SOUTH ELEVATION
A200
1/8" = 1'-0"



2 WEST ELEVATION
A200
1/8" = 1'-0"



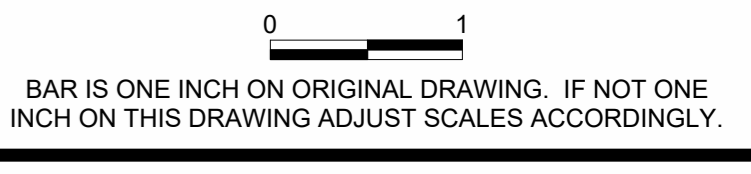
4 EAST ELEVATION
A200
1/8" = 1'-0"

GENERAL NOTES

1.

KEYNOTES

- 1 FACTORY FINISHED INSULATED METAL PANEL WALL SYSTEM.
- 2 FACTORY FINISHED METAL ROOF EDGE FOR FACTORY FINISHED INSULATED METAL PANEL ROOF SYSTEM.
- 3 INSULATED OVERHEAD SECTIONAL DOOR WITH VISION PANELS AND OPERATOR.
- 4 CONCRETE FILLED STEEL BOLLARD (OSHA YELLOW). SEE STRUCTURAL.
- 5 WALL-PACK LED DOWN-LIGHTING TO BE NIGHT SKY COMPLIANT. SEE ELECTRICAL.
- 6 INSULATED ALUMINUM ENTRY SYSTEM W/ SIDELITE. SEE XX/XXXX FOR DETAILS.
- 7 APPROX. GRADE. SLOPE AWAY FROM BUILDING.
- 8 DASHED LINE INDICATES FOUNDATION AND FOOTING BELOW GRADE.
- 9 FACTORY FINISHED METAL GUTTER AND DOWNSPOUT TO SUB GRADE DRAINAGE.
- 10 FACTORY FINISHED INSULATED METAL PANEL ROOF SYSTEM.
- 11 3'-0" X 7'-0" HOLLOW METAL SERVICE DOOR AND FRAME W/ HARDWARE AS REQ'D.
- 12 EXTERIOR LOUVER.
- 13 3'-6" X 6'-0" INSULATED TRANSLUCENT PANEL. SEE XX/XXXX FOR DETAILS.
- 14 3'-6" X 6'-0" INSULATED ALUMINUM WINDOW UNIT. SEE XX/XXXX FOR DETAILS.



DESIGN DEVELOPMENT

| NO. | DATE | ISSUE RECORD |
|-----|------|--------------|
| | | |
| | | |
| | | |
| | | |
| | | |
| | | |
| | | |
| | | |
| | | |
| | | |
| | | |

ISSUED FOR REVIEW ONLY
NOT FOR CONSTRUCTION
2/07/2023

| DESIGNED | DRAWN | CHECKED | Checker |
|----------|-------|---------|---------|
| ADG | TE | | |

ELEVATIONS

EXTERIOR MATERIAL SCHEDULE

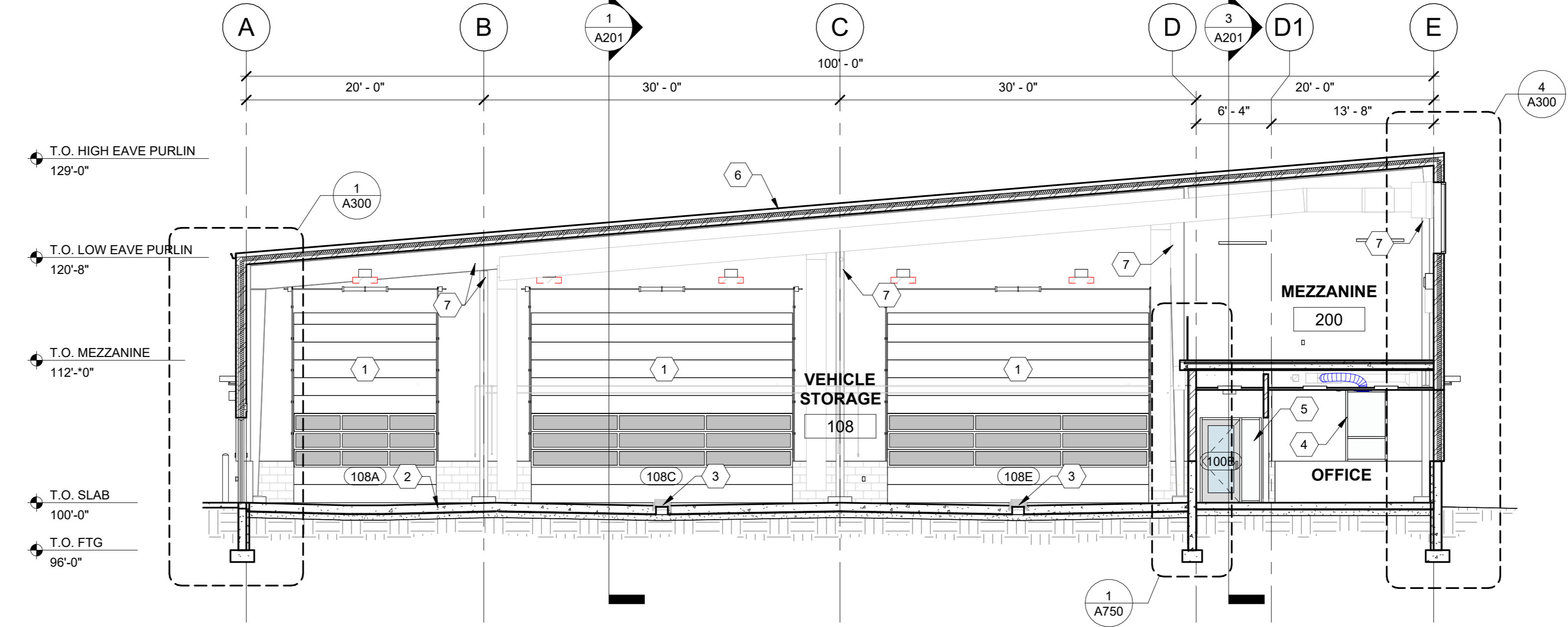
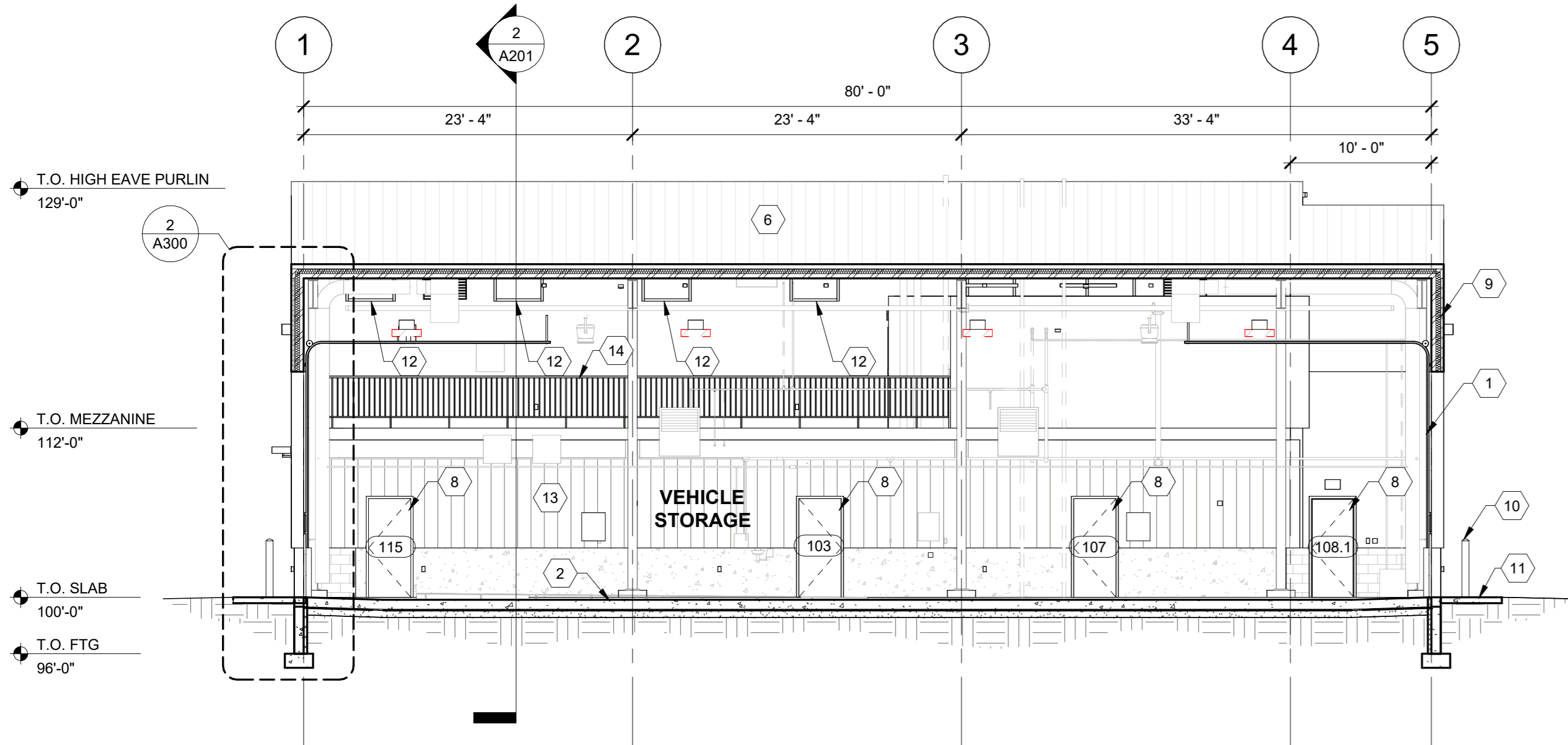
| ID TAG | DESCRIPTION | MANUFACTURER | PRODUCT STYLE / SERIES | COLOR / FINISH | SIZE / UNIT | NOTES |
|--------|-------------|--------------|------------------------|----------------|-------------|-------|
| | | | | | | |
| | | | | | | |
| | | | | | | |
| | | | | | | |

A200

GENERAL NOTES

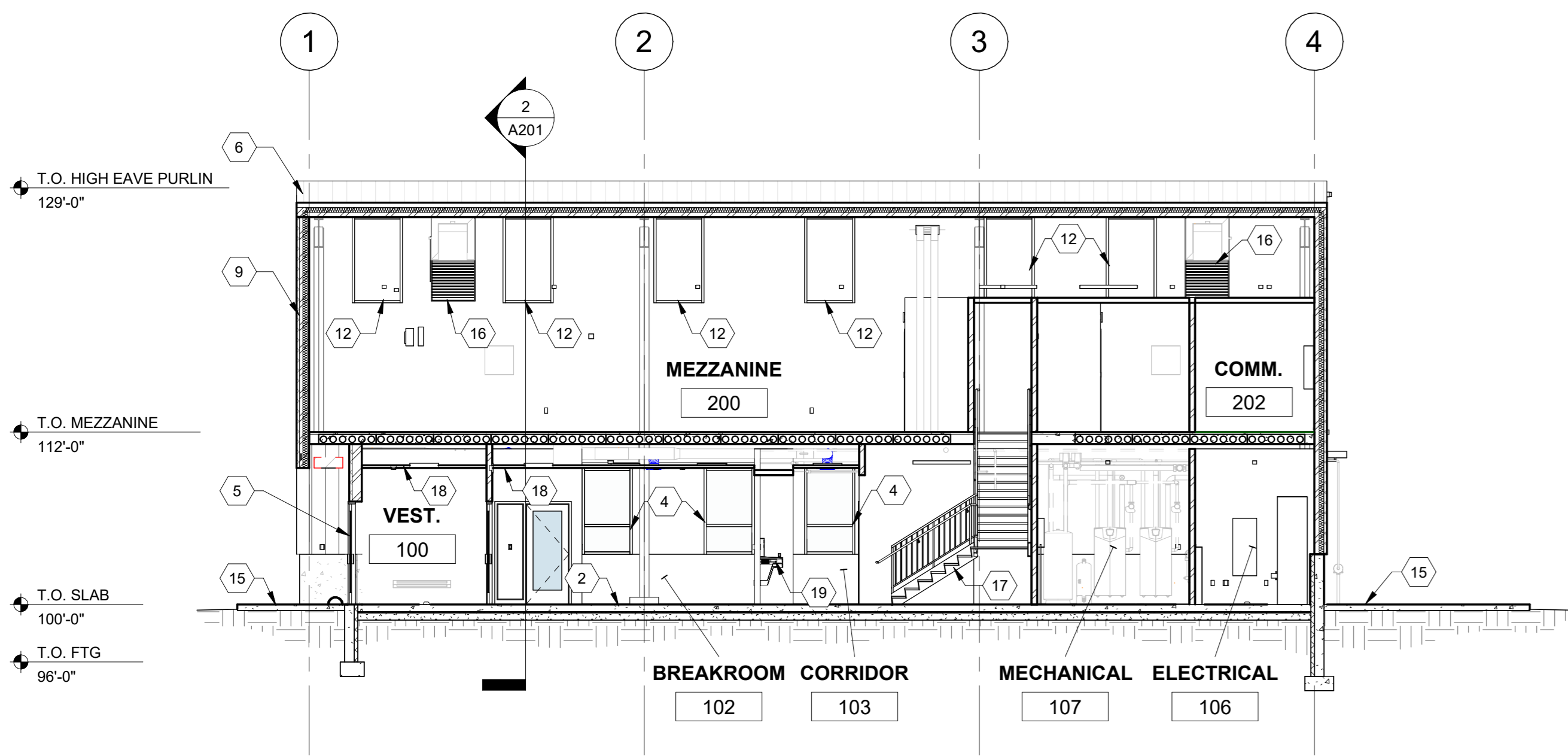
CONSULTANTS:

MARSHALL
SRE BUILDING



1 BUILDING SECTION NORTH-SOUTH
A201 1/8" = 1'-0"

2 BUILDING SECTION EAST-WEST
A201 1/8" = 1'-0"



3 BUILDING SECTION NORTH-SOUTH1
A201 1/8" = 1'-0"

KEYNOTES

- 1 INSULATED OVERHEAD SECTIONAL DOOR WITH VISION PANELS AND OPERATOR.
2 CONCRETE SLAB ON GRADE WITH HYDRONIC HEAT LOOPS, SLOPE TO DRAINS.
3 HEAVY DUTY TRENCH DRAIN WITH METAL GRATING. SEE MECHANICAL.
4 3'-6" X 6'-0" INSULATED ALUMINUM WINDOW UNIT. SEE XX/XXXX FOR DETAILS.
5 INSULATED ALUMINUM ENTRY SYSTEM W/ SIDELITE. SEE XX/XXXX FOR DETAILS.
6 FACTORY FINISHED INSULATED METAL PANEL ROOF SYSTEM.
7 RIGID BUILDING FRAME, TYPICAL.
8 3'-0" X 7'-0" HOLLOW METAL DOOR AND FRAME W/ HARDWARE AS REQ'D.
9 FACTORY FINISHED INSULATED METAL PANEL WALL SYSTEM.
10 CONCRETE FILLED STEEL BOLLARD (OSHA YELLOW). SEE STRUCTURAL.
11 REINFORCED CONCRETE APRON, TYPICAL.
12 3'-6" X 6'-0" INSULATED TRANSLUCENT PANEL. SEE XX/XXXX FOR DETAILS.
13 METAL LINER PANEL FINISH.
14 METAL GUARD RAIL, TYPICAL.
15 REINFORCED CONCRETE STOOP WITH FROST FOUNDATION. SEE STRUCTURAL.
16 EXTERIOR LOUVER.
17 STAIR TO MEZZANINE.
18 ACOUSTIC CEILING TILE.
19 WATER COOLER.

0 1
BAR IS ONE INCH ON ORIGINAL DRAWING. IF NOT ONE
INCH ON THIS DRAWING ADJUST SCALES ACCORDINGLY.

DESIGN DEVELOPMENT

Table with columns for NO., DATE, and ISSUE RECORD.

ISSUED FOR REVIEW ONLY
NOT FOR CONSTRUCTION
2/07/2023

Table with columns for DESIGNED, DRAWN, CHECKED, and Checker.

A201

18338.001