

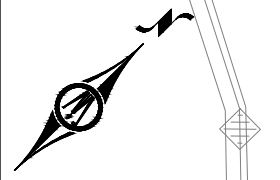
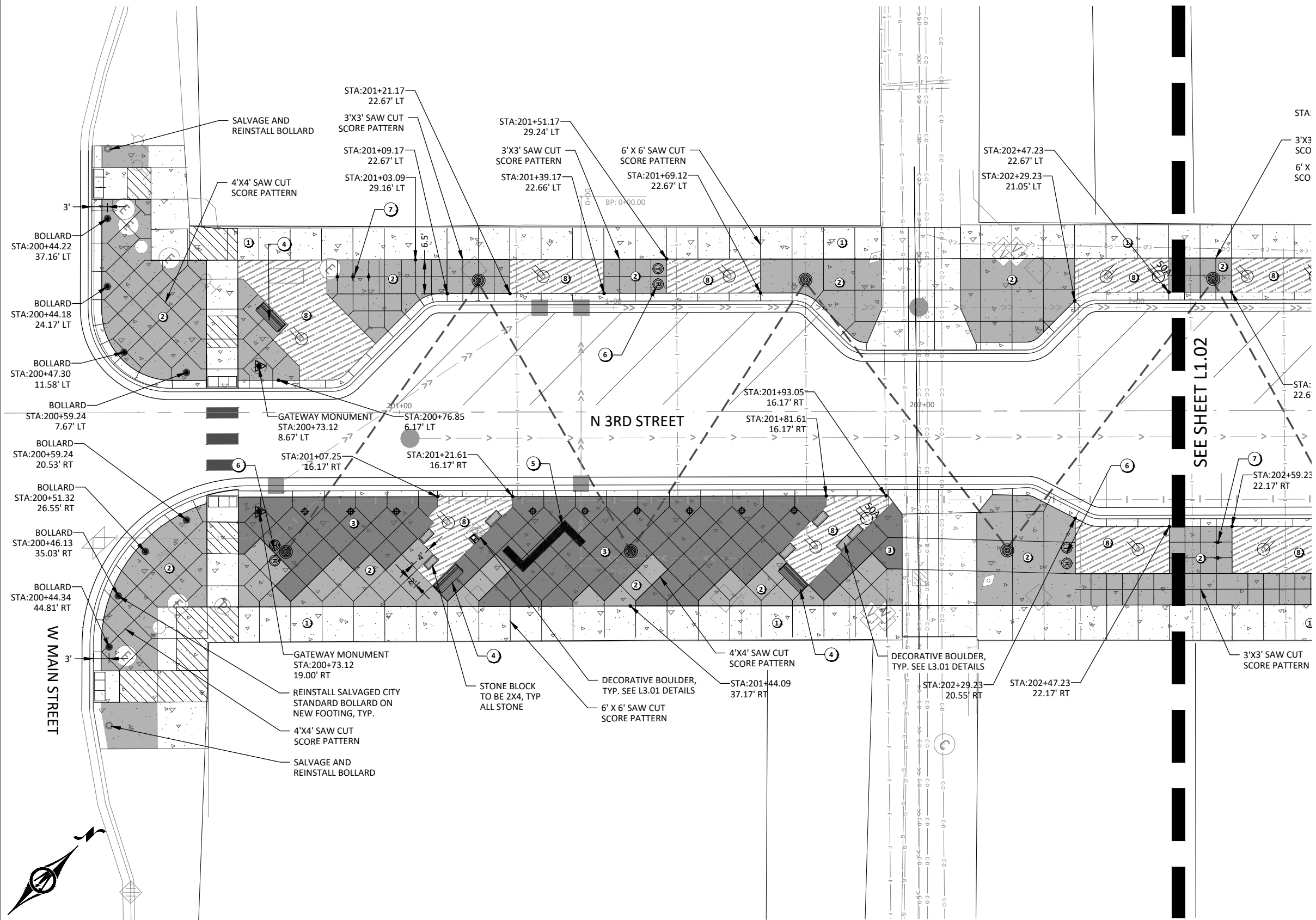
KEY MAP

SITE KEYNOTES:

- ① STANDARD CONCRETE WALK, REFER TO PLAN AND PROFILE SHEETS)
- ② CONCRETE WALK SPECIAL 1, REFER TO L3.02
- ③ CONCRETE WALK SPECIAL 2 - DARK GREY, SANDBLASTING & STAINING, REFER TO L3.02
- ④ BENCH TYPE 1, REFER TO L3.03
- ⑤ BENCH TYPE 2, REFER TO L3.03, NOT IN CONTRACT
- ⑥ WASTE AND RECYCLING RECEPTACLE, REFER TO L3.03
- ⑦ BIKE RACK, REFER TO L3.03
- ⑧ LANDSCAPE BED, REFER TO L2.00 SHEET SERIES
- ⑨ HYDROSEED TURF
- ⑩ TREE GRATE, REFER TO L3.01

ELECTRICAL ITEMS LEGEND REFER TO ELECTRICAL SHEETS

- LIGHT UNIT TYPE A FOOTING, POLE AND FIXTURE BY OTHERS
- LIGHT UNIT TYPE B FOOTING, POLE AND FIXTURE BY OTHERS
- LIGHT UNIT TYPE EE - FESTOON CABLE LIGHTS, BY OTHERS
- GFCI - DULEX PEDESTAL
- 50 AMP UNMETERED EVENT POWER PEDESTAL
- 20 AMP UNMETERED EVENT POWER PEDESTAL
- LIGHT UNIT TYPE C FOOTING, BOLLARD BY OTHERS



HEREBY CERTIFY THAT THIS PLAN, SPECIFICATION, OR REPORT WAS PREPARED BY ME OR UNDER MY DIRECT SUPERVISION AND THAT I AM A DULY LICENSED LANDSCAPE ARCHITECT UNDER THE LAWS OF THE STATE OF MINNESOTA.

REVIEW PLAN

SAMUEL J. KESSEL
LIC. NO. 50677 DATE XX/XX/2023



1960 PREMIER DRIVE
MANKATO, MINNESOTA 56001
Phone: (507) 625-4171
Email: Mankato@bolton-menk.com
www.bolton-menk.com

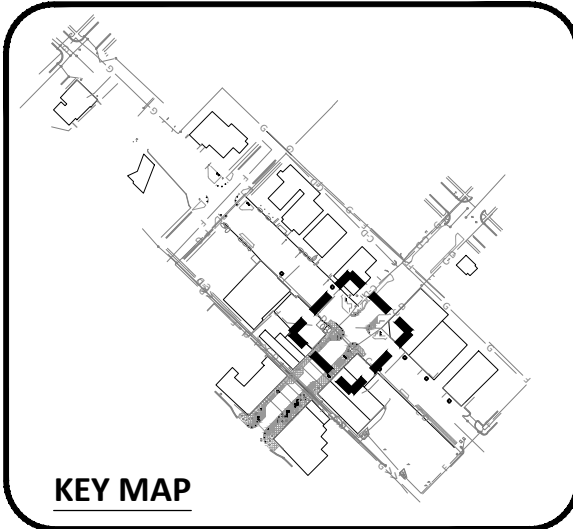
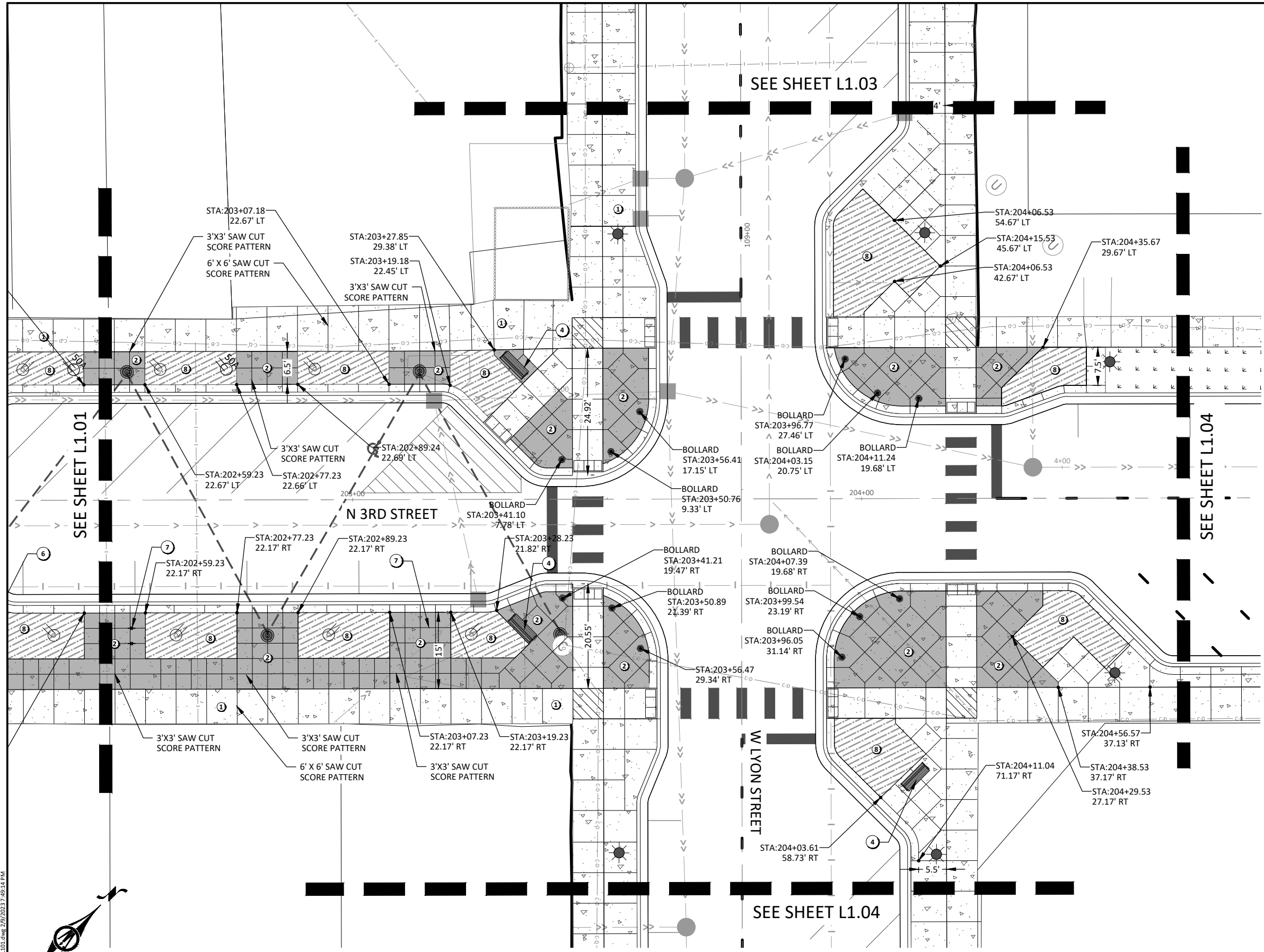


DESIGNED	NO.	ISSUED FOR	DATE
SJM/CCC			
DRAWN			
CCC			
CHECKED			
SJM			
CLIENT PROJ. NO.			
OW1.127006			

CITY OF MARSHALL, MINNESOTA
2023 N 3RD ST - W LYON ST IMPROVEMENTS
PLAN SHEETS
STREETSCAPE LAYOUT PLAN

SHEET
L1.01

© Bolton & Menk, Inc. 2023. All Rights Reserved. MANKATO127006-CAD-L1.01-2023-01.dwg 2/9/2023 7:49:11 PM



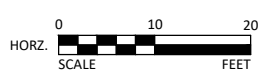
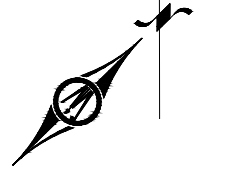
KEY MAP

SITE KEYNOTES:

- ① STANDARD CONCRETE WALK, REFER TO PLAN AND PROFILE SHEETS
- ② CONCRETE WALK SPECIAL 1, REFER TO L3.02
- ③ CONCRETE WALK SPECIAL 2 - DARK GREY, SANDBLASTING & STAINING, REFER TO L3.02
- ④ BENCH TYPE 1, REFER TO L3.03
- ⑤ BENCH TYPE 2, REFER TO L3.03, NOT IN CONTRACT
- ⑥ WASTE AND RECYCLING RECEPTACLE, REFER TO L3.03
- ⑦ BIKE RACK, REFER TO L3.03
- ⑧ LANDSCAPE BED, REFER TO L2.00 SHEET SERIES
- ⑨ HYDROSEED TURF
- ⑩ TREE GRATE, REFER TO L3.01

ELECTRICAL ITEMS LEGEND REFER TO ELECTRICAL SHEETS

- LIGHT UNIT TYPE A FOOTING, POLE AND FIXTURE BY OTHERS
- LIGHT UNIT TYPE B FOOTING, POLE AND FIXTURE BY OTHERS
- LIGHT UNIT TYPE EE - FESTOON CABLE LIGHTS, BY OTHERS
- GFCI - DULEX PEDESTAL
- 50 AMP UNMETERED EVENT POWER PEDESTAL
- 20 AMP UNMETERED EVENT POWER PEDESTAL
- LIGHT UNIT TYPE C FOOTING, BOLLARD BY OTHERS



HEREBY CERTIFY THAT THIS PLAN, SPECIFICATION, OR REPORT WAS PREPARED BY ME OR UNDER MY DIRECT SUPERVISION AND THAT I AM A DULY LICENSED LANDSCAPE ARCHITECT UNDER THE LAWS OF THE STATE OF MINNESOTA.

REVIEW PLAN

SAMUEL J. KESSEL
 LIC. NO. 50677 DATE XX/XX/2023



1960 PREMIER DRIVE
 MANKATO, MINNESOTA 56001
 Phone: (507) 625-4171
 Email: Mankato@bolton-menk.com
 www.bolton-menk.com

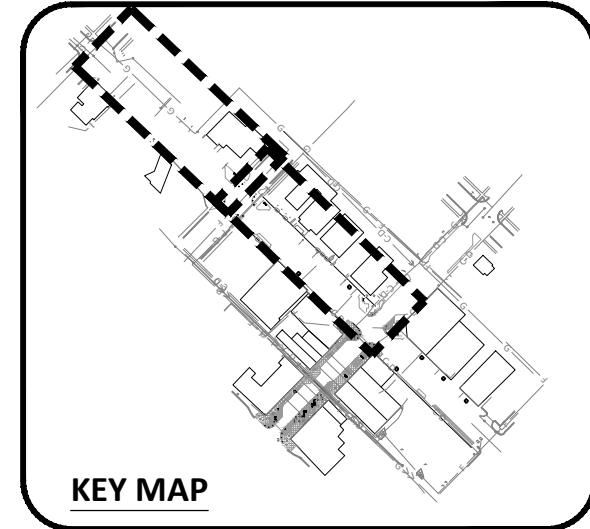
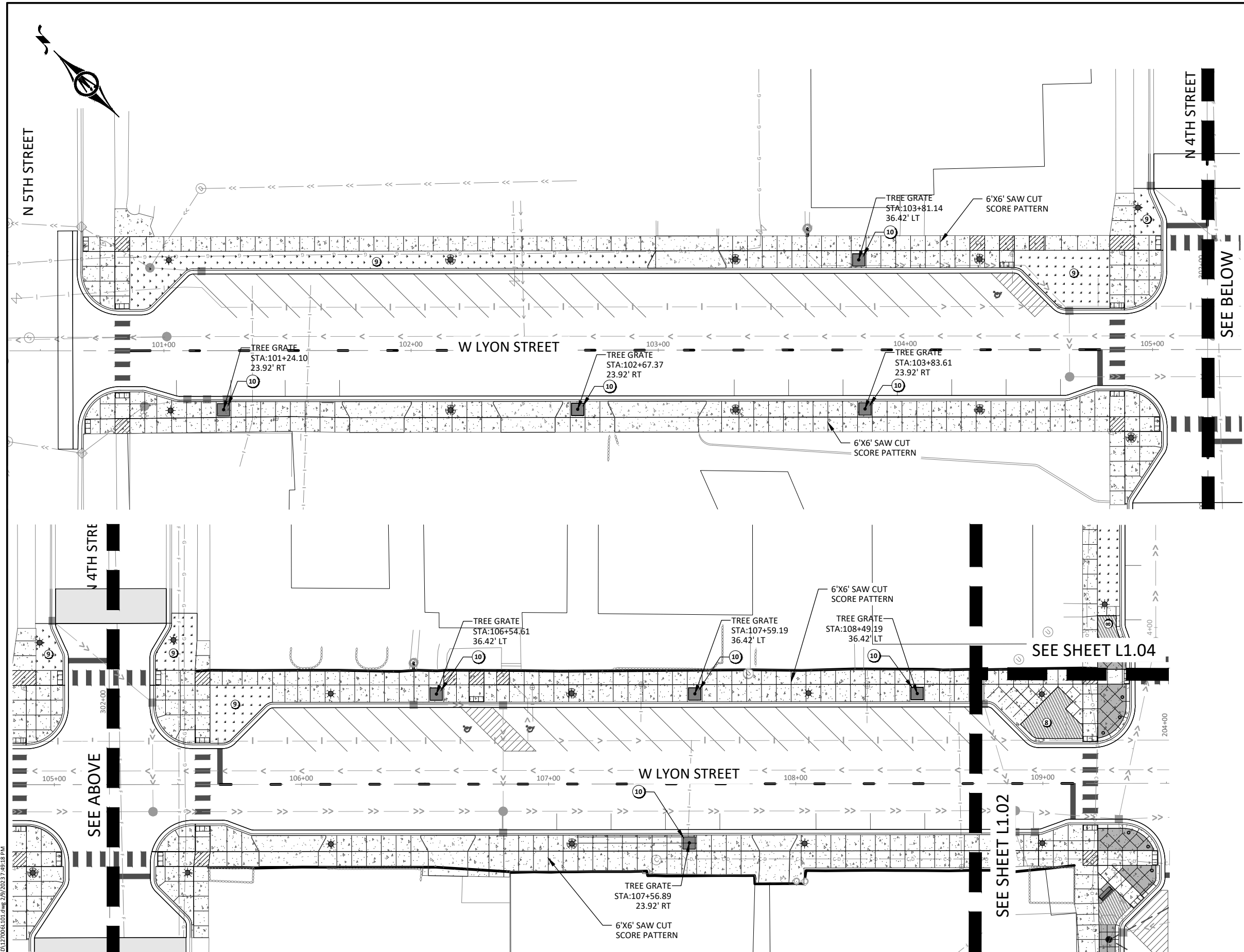


DESIGNED	NO.	ISSUED FOR	DATE
SJM/CCC			
DRAWN	CCC		
CHECKED	SJM		
CLIENT PROJ. NO.	OW1.127006		

CITY OF MARSHALL, MINNESOTA
 2023 N 3RD ST - W LYON ST IMPROVEMENTS
PLAN SHEETS
 STREETScape LAYOUT PLAN

SHEET
L1.02

© Bolton & Menk, Inc. 2023. All Rights Reserved. 11/14/2023 11:27:06 AM C:\E:\DWG\2023\127006\L1.02.dwg 2/9/2023 7:49:14 PM



KEY MAP

SITE KEYNOTES:

- ① STANDARD CONCRETE WALK, REFER TO PLAN AND PROFILE SHEETS)
- ② CONCRETE WALK SPECIAL 1, REFER TO L3.02
- ③ CONCRETE WALK SPECIAL 2 - DARK GREY, SANDBLASTING & STAINING, REFER TO L3.02
- ④ BENCH TYPE 1, REFER TO L3.03
- ⑤ BENCH TYPE 2, REFER TO L3.03, NOT IN CONTRACT
- ⑥ WASTE AND RECYCLING RECEPTACLE, REFER TO L3.03
- ⑦ BIKE RACK, REFER TO L3.03
- ⑧ LANDSCAPE BED, REFER TO L2.00 SHEET SERIES
- ⑨ HYDROSEED TURF
- ⑩ TREE GRATE, REFER TO L3.01

ELECTRICAL ITEMS LEGEND REFER TO ELECTRICAL SHEETS

- LIGHT UNIT TYPE A FOOTING, POLE AND FIXTURE BY OTHERS
- LIGHT UNIT TYPE B FOOTING, POLE AND FIXTURE BY OTHERS
- LIGHT UNIT TYPE EE - FESTOON CABLE LIGHTS, BY OTHERS
- GFCI - DULEX PEDESTAL
- 50 AMP UNMETERED EVENT POWER PEDESTAL
- 20 AMP UNMETERED EVENT POWER PEDESTAL
- LIGHT UNIT TYPE C FOOTING, BOLLARD BY OTHERS

© Bolton & Menk, Inc. 2023. All Rights Reserved. 2/29/2023 7:49:18 PM \\MARSHALL\1127006\CAD\127006\DWG\127006.L1.03.DWG



HEREBY CERTIFY THAT THIS PLAN, SPECIFICATION, OR REPORT WAS PREPARED BY ME OR UNDER MY DIRECT SUPERVISION AND THAT I AM A DULY LICENSED LANDSCAPE ARCHITECT UNDER THE LAWS OF THE STATE OF MINNESOTA.

REVIEW PLAN

SAMUEL J. KESSEL
 LIC. NO. 50677 DATE XX/XX/2023



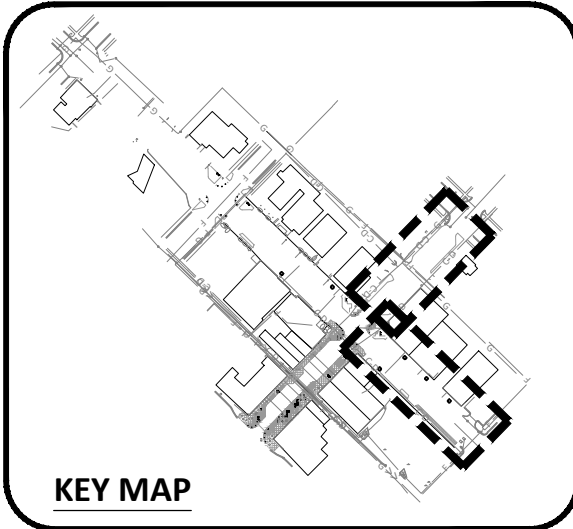
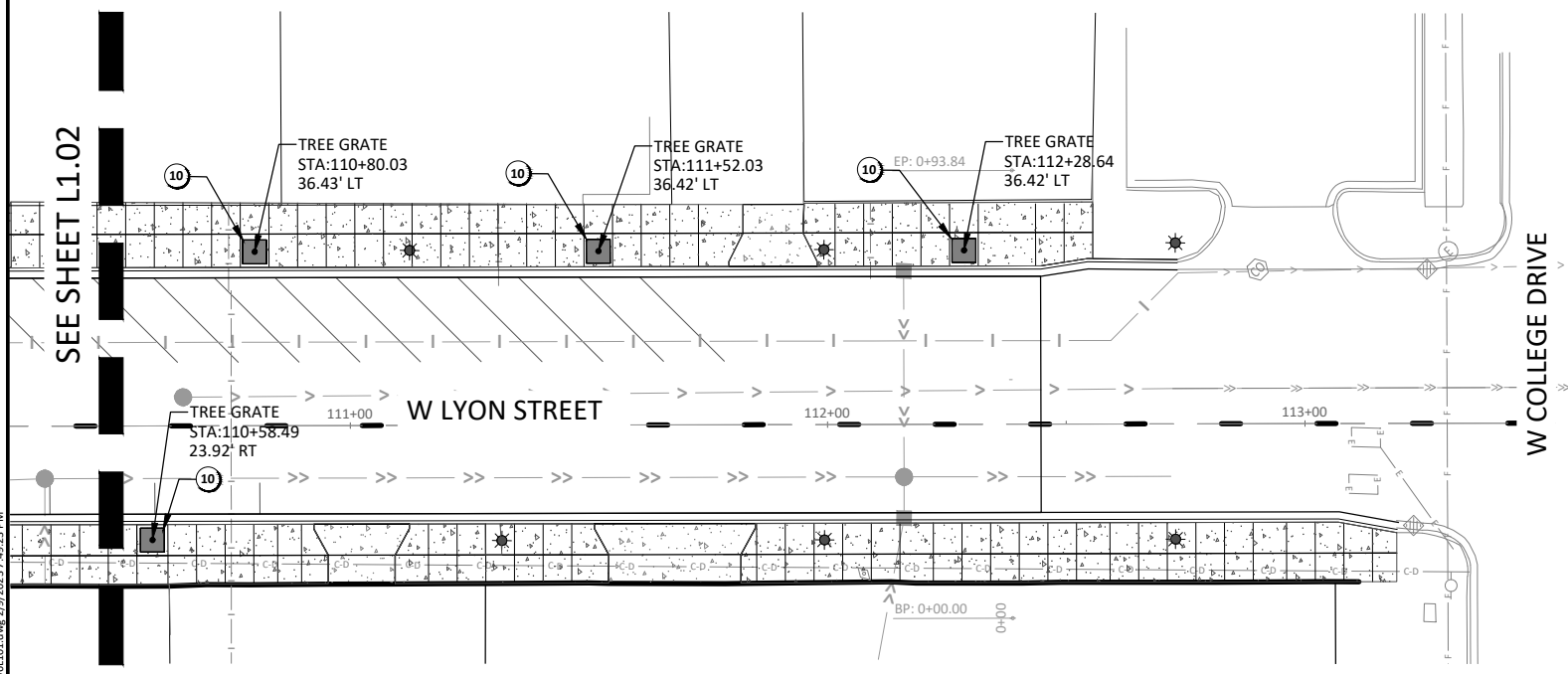
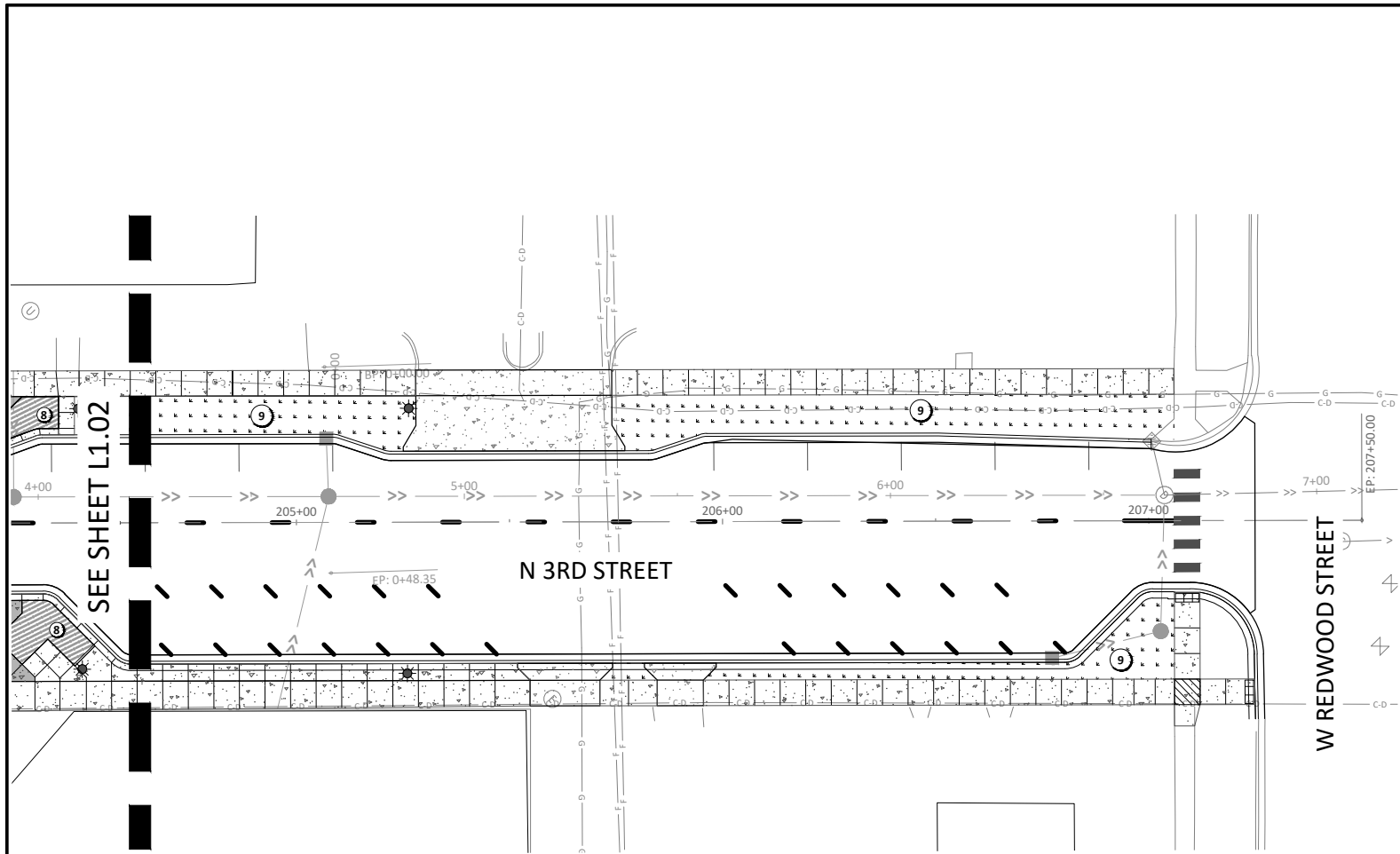
1960 PREMIER DRIVE
 MANKATO, MINNESOTA 56001
 Phone: (507) 625-4171
 Email: Mankato@bolton-menk.com
 www.bolton-menk.com



DESIGNED	NO.	ISSUED FOR	DATE
SJM/CCC			
DRAWN			
CCC			
CHECKED			
SJM			
CLIENT PROJ. NO.			
OW1.127006			

CITY OF MARSHALL, MINNESOTA
 2023 N 3RD ST - W LYON ST IMPROVEMENTS
PLAN SHEETS
 STREETScape LAYOUT PLAN

SHEET
L1.03



- SITE KEYNOTES:**
- ① STANDARD CONCRETE WALK, REFER TO PLAN AND PROFILE SHEETS)
 - ② CONCRETE WALK SPECIAL 1, REFER TO L3.02
 - ③ CONCRETE WALK SPECIAL 2 - DARK GREY, SANDBLASTING & STAINING, REFER TO L3.02
 - ④ BENCH TYPE 1, REFER TO L3.03
 - ⑤ BENCH TYPE 2, REFER TO L3.03, NOT IN CONTRACT
 - ⑥ WASTE AND RECYCLING RECEPTACLE, REFER TO L3.03
 - ⑦ BIKE RACK, REFER TO L3.03
 - ⑧ LANDSCAPE BED, REFER TO L2.00 SHEET SERIES
 - ⑨ HYDROSEED TURF
 - ⑩ TREE GRATE, REFER TO L3.01

- ELECTRICAL ITEMS LEGEND REFER TO ELECTRICAL SHEETS**
- LIGHT UNIT TYPE A FOOTING, POLE AND FIXTURE BY OTHERS
 - LIGHT UNIT TYPE B FOOTING, POLE AND FIXTURE BY OTHERS
 - LIGHT UNIT TYPE EE - FESTOON CABLE LIGHTS, BY OTHERS
 - GFCI - DULEX PEDESTAL
 - 50 AMP UNMETERED EVENT POWER PEDESTAL
 - 20 AMP UNMETERED EVENT POWER PEDESTAL
 - LIGHT UNIT TYPE C FOOTING, BOLLARD BY OTHERS

© Bolton & Menk, Inc. 2023. All Rights Reserved. P:\MARSHALL\127006\CAD\CAD1\2023\DWG_29/2023 7-49-23 DWG



HEREBY CERTIFY THAT THIS PLAN, SPECIFICATION, OR REPORT WAS PREPARED BY ME OR UNDER MY DIRECT SUPERVISION AND THAT I AM A DULY LICENSED LANDSCAPE ARCHITECT UNDER THE LAWS OF THE STATE OF MINNESOTA.

REVIEW PLAN

SAMUEL J. KESSEL
 LIC. NO. 50677 DATE XX/XX/2023



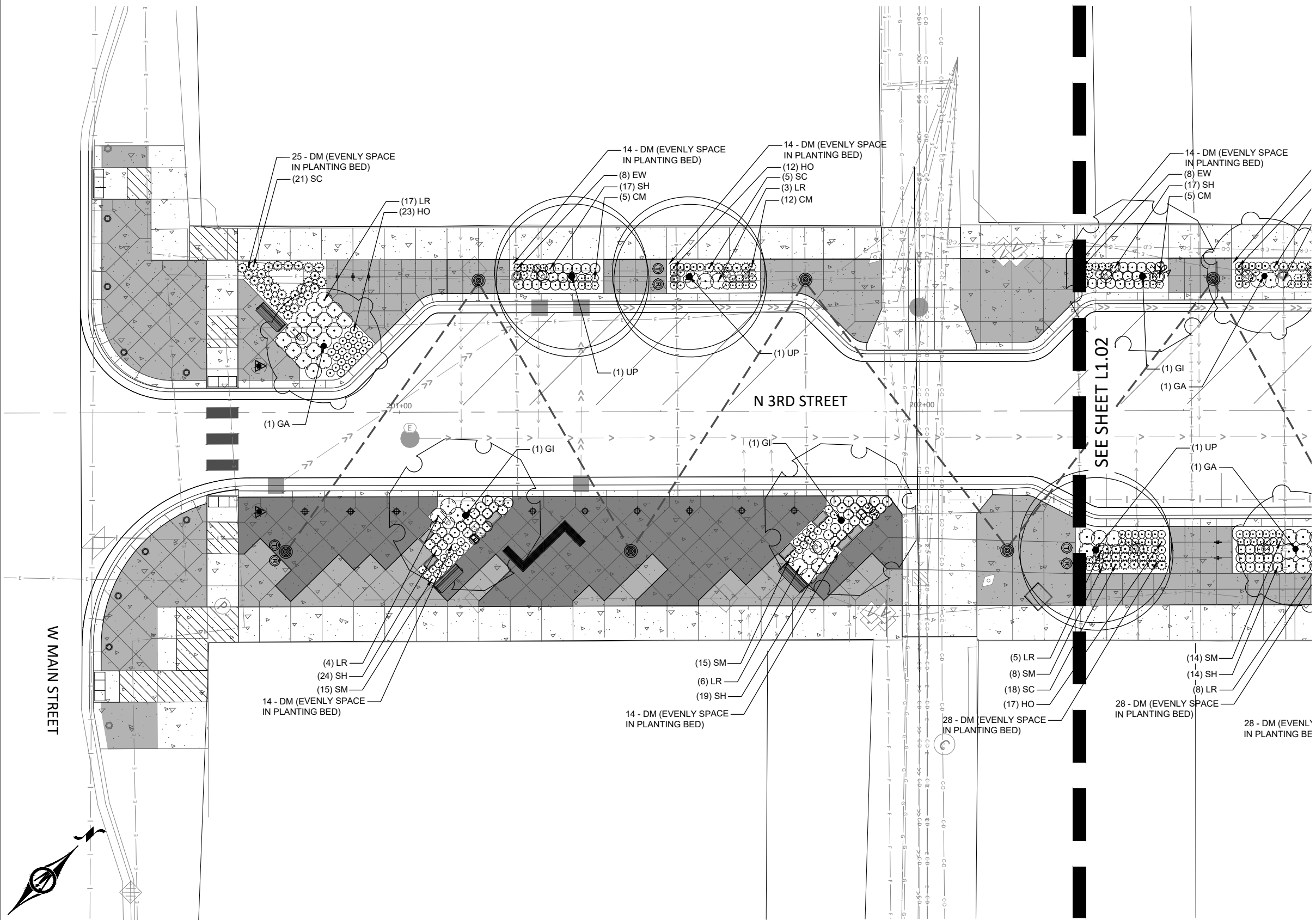
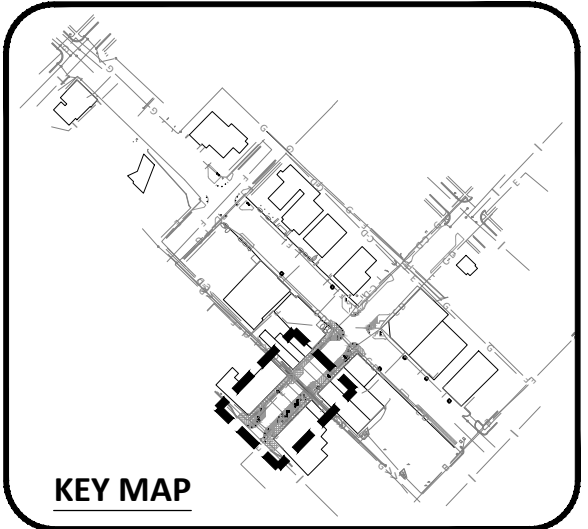
1960 PREMIER DRIVE
 MANKATO, MINNESOTA 56001
 Phone: (507) 625-4171
 Email: Mankato@bolton-menk.com
 www.bolton-menk.com



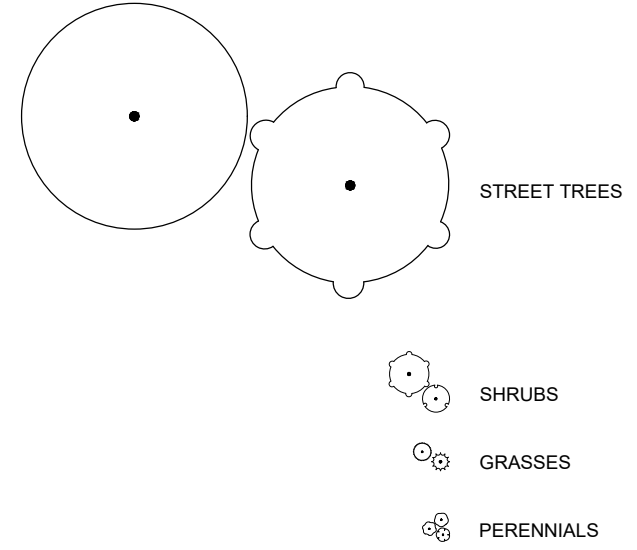
DESIGNED	NO.	ISSUED FOR	DATE
SJM/CCC			
DRAWN			
CCC			
CHECKED			
SJM			
CLIENT PROJ. NO.			
OW1.127006			

CITY OF MARSHALL, MINNESOTA
 2023 N 3RD ST - W LYON ST IMPROVEMENTS
 PLAN SHEETS
 STREETScape LAYOUT PLAN

SHEET
L1.04



LEGEND:



© Bolton & Menk, Inc. 2023. All Rights Reserved. MANKATO, MINN. 11/27/2023 2:29:08 PM 2/9/2023 7:50:23 PM



HEREBY CERTIFY THAT THIS PLAN, SPECIFICATION, OR REPORT WAS PREPARED BY ME OR UNDER MY DIRECT SUPERVISION AND THAT I AM A DULY LICENSED LANDSCAPE ARCHITECT UNDER THE LAWS OF THE STATE OF MINNESOTA.

REVIEW PLAN

SAMUEL J. KESSEL
LIC. NO. 50677 DATE XX/XX/2023



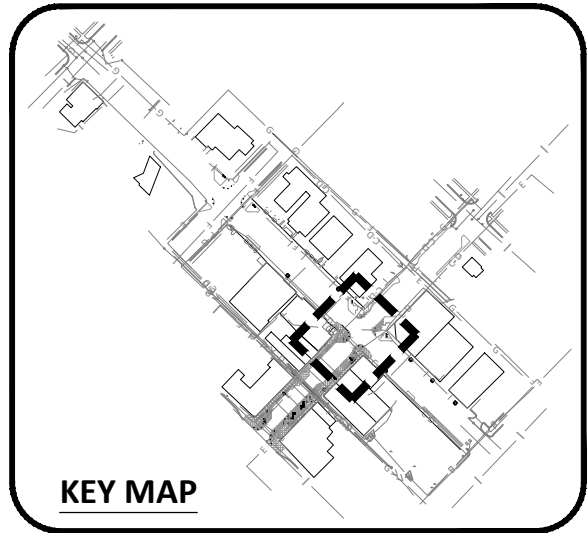
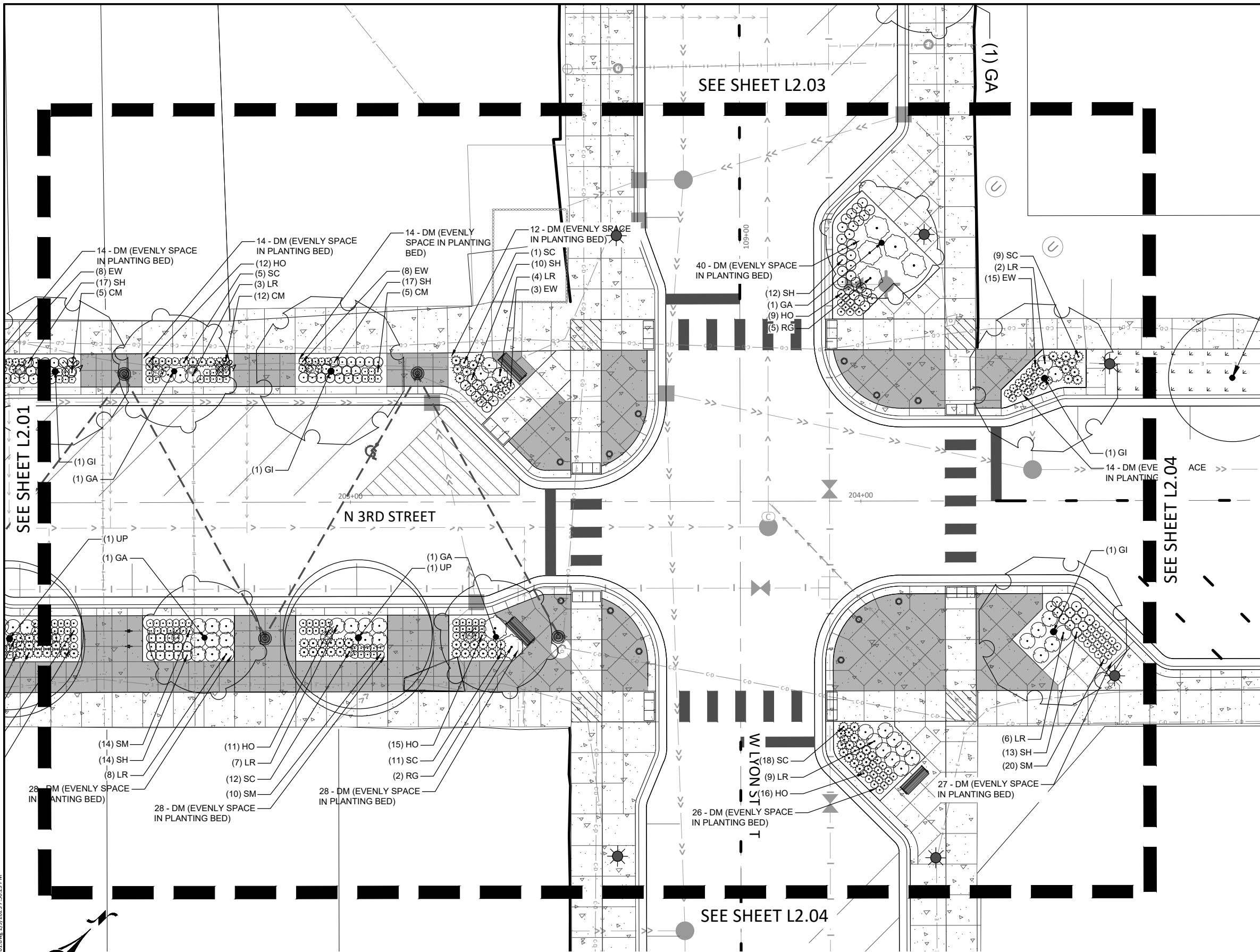
1960 PREMIER DRIVE
MANKATO, MINNESOTA 56001
Phone: (507) 625-4171
Email: Mankato@bolton-menk.com
www.bolton-menk.com



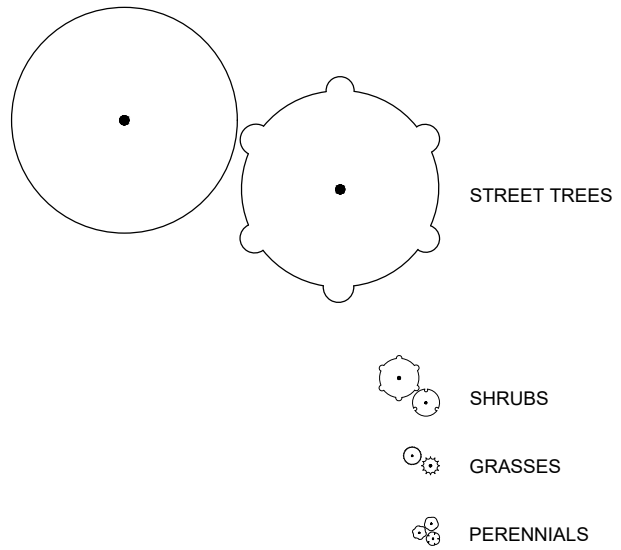
DESIGNED	NO.	ISSUED FOR	DATE
SJM/CCC			
DRAWN			
CCC			
CHECKED			
SJM			
CLIENT PROJ. NO.			
OW1.127006			

CITY OF MARSHALL, MINNESOTA
2023 N 3RD ST - W LYON ST IMPROVEMENTS
LANDSCAPE PLANS
LANDSCAPE PLAN

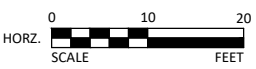
SHEET
L2.01



LEGEND:



© Bolton & Menk, Inc. 2023. All Rights Reserved. MANKATO 1127006 CADD L2.02 DWG 2/9/2023 7:50:29 PM



HEREBY CERTIFY THAT THIS PLAN, SPECIFICATION, OR REPORT WAS PREPARED BY ME OR UNDER MY DIRECT SUPERVISION AND THAT I AM A DULY LICENSED LANDSCAPE ARCHITECT UNDER THE LAWS OF THE STATE OF MINNESOTA.

REVIEW PLAN

SAMUEL J. KESSEL
 LIC. NO. 50677 DATE XX/XX/2023



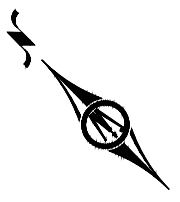
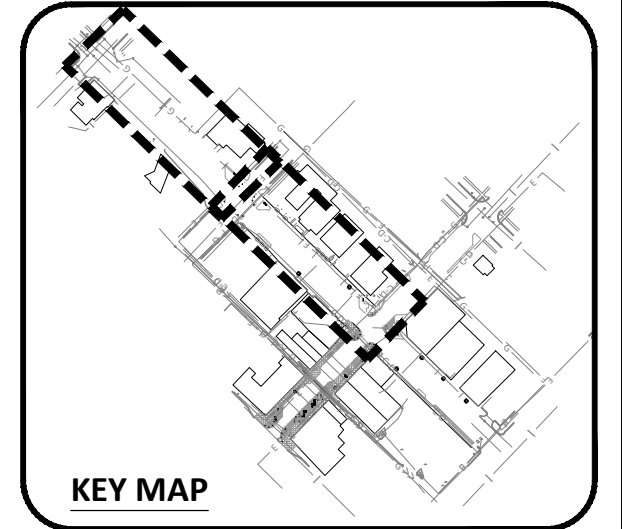
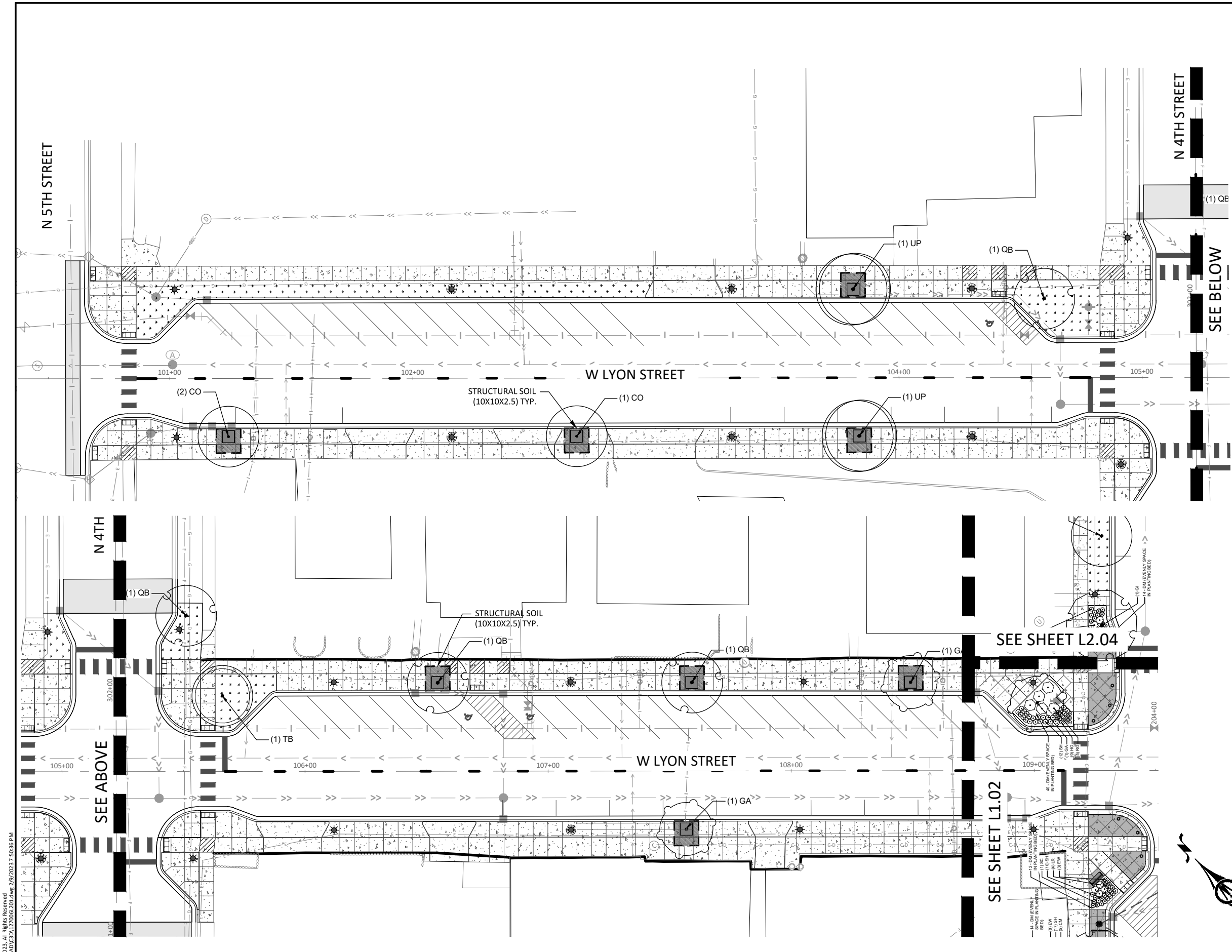
1960 PREMIER DRIVE
 MANKATO, MINNESOTA 56001
 Phone: (507) 625-4171
 Email: Mankato@bolton-menk.com
 www.bolton-menk.com



DESIGNED	NO.	ISSUED FOR	DATE
SJM/CCC			
DRAWN			
CCC			
CHECKED			
SJM			
CLIENT PROJ. NO.			
OW1.127006			

CITY OF MARSHALL, MINNESOTA
 2023 N 3RD ST - W LYON ST IMPROVEMENTS
 LANDSCAPE PLANS
 LANDSCAPE PLAN

SHEET
L2.02



© Bolton & Menk, Inc. 2023. All Rights Reserved. MANKATO12127006.CAD (L2.03) DWG, 2/9/2023 7:50:36 PM



HEREBY CERTIFY THAT THIS PLAN, SPECIFICATION, OR REPORT WAS PREPARED BY ME OR UNDER MY DIRECT SUPERVISION AND THAT I AM A DULY LICENSED LANDSCAPE ARCHITECT UNDER THE LAWS OF THE STATE OF MINNESOTA.

REVIEW PLAN

SAMUEL J. KESSEL
 LIC. NO. 50677 DATE XX/XX/2023



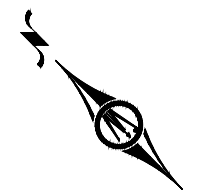
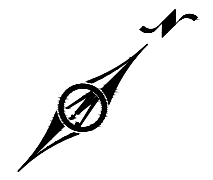
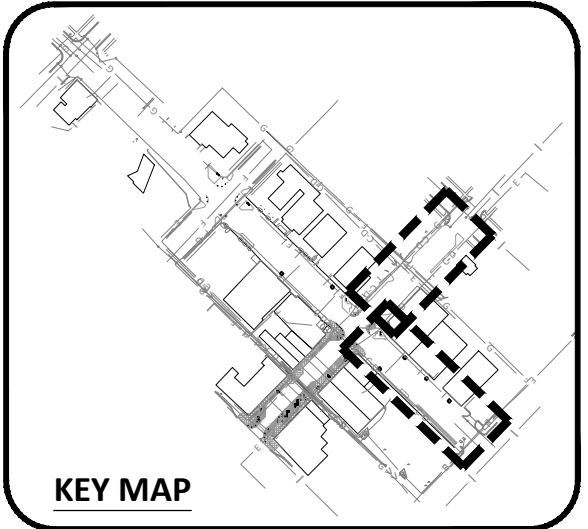
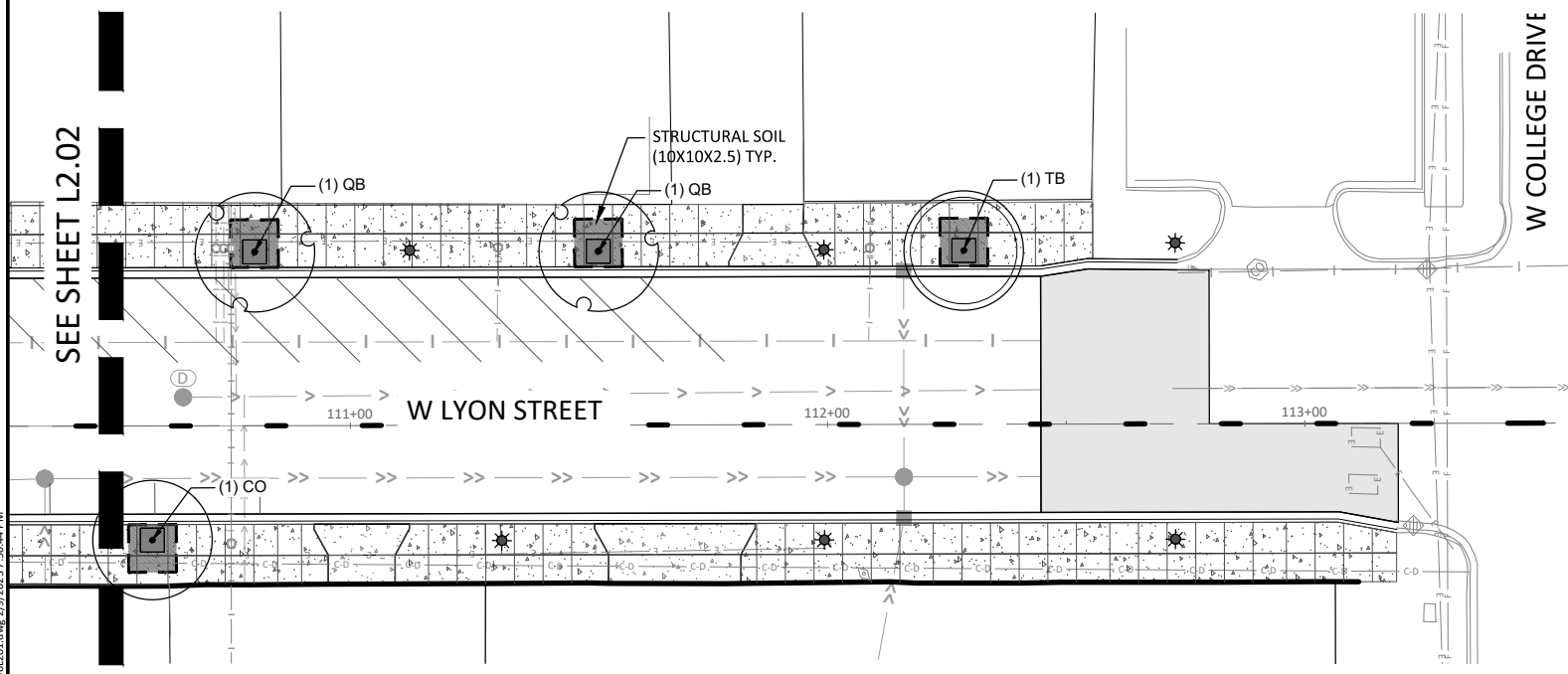
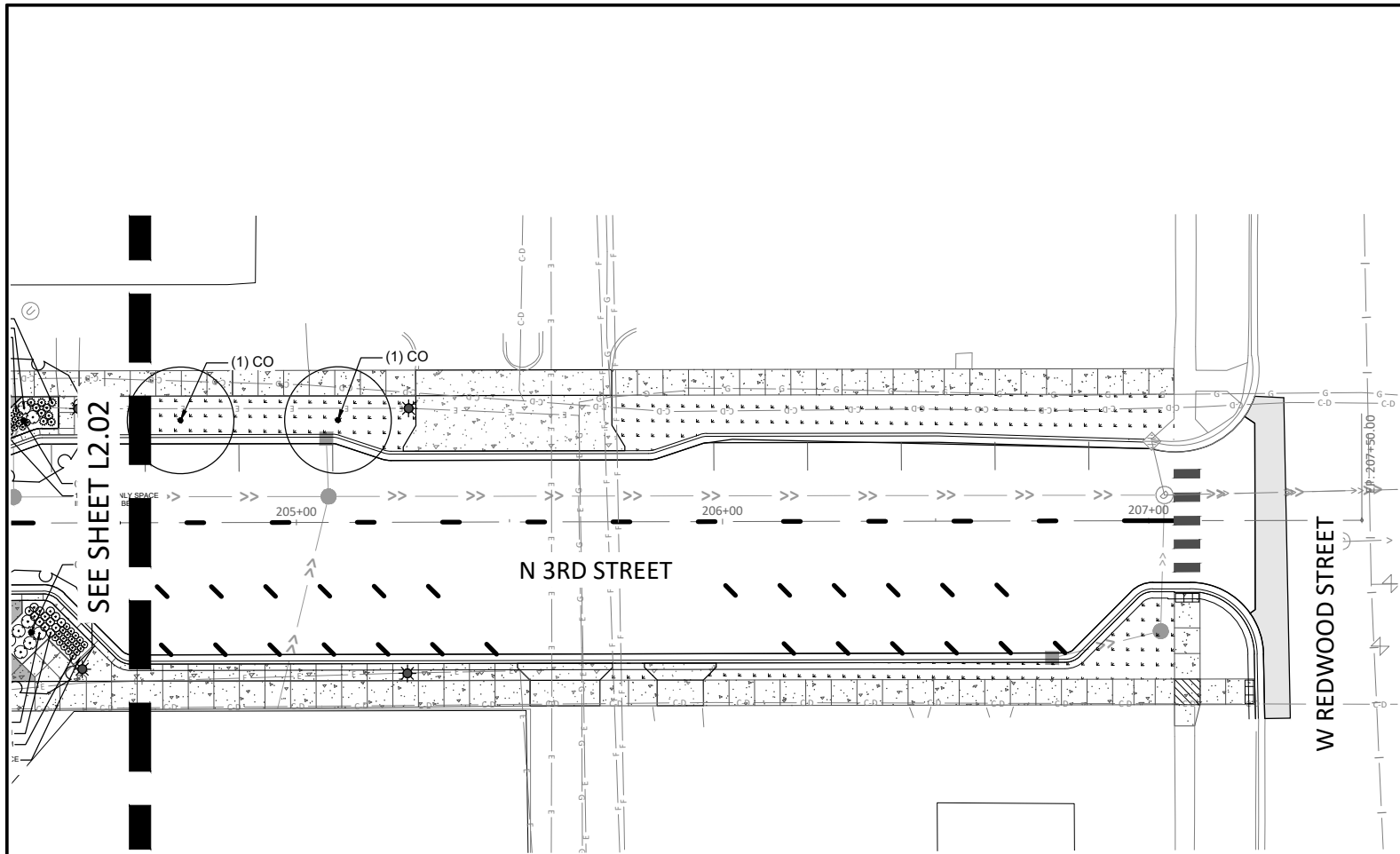
1960 PREMIER DRIVE
 MANKATO, MINNESOTA 56001
 Phone: (507) 625-4171
 Email: Mankato@bolton-menk.com
 www.bolton-menk.com



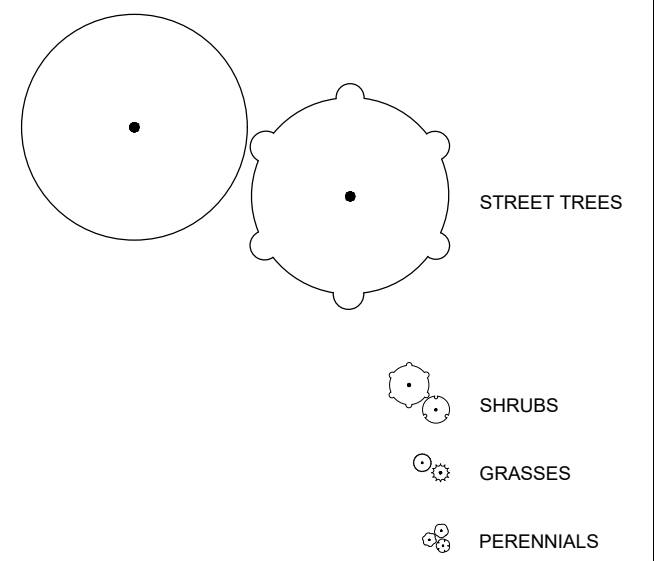
DESIGNED	NO.	ISSUED FOR	DATE
SJM/CCC			
DRAWN			
CCC			
CHECKED			
SJM			
CLIENT PROJ. NO.			
OW1-127006			

CITY OF MARSHALL, MINNESOTA
 2023 N 3RD ST - W LYON ST IMPROVEMENTS
 LANDSCAPE PLANS
 LANDSCAPE PLAN

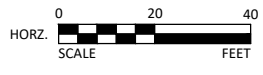
SHEET
L2.03



LEGEND:



© Bolton & Menk, Inc. 2023. All Rights Reserved. MANKATO 1127006.CAD (E:\127006\2023\2023-04-14.dwg, 2/9/2023 7:50:44 PM)



I HEREBY CERTIFY THAT THIS PLAN, SPECIFICATION, OR REPORT WAS PREPARED BY ME OR UNDER MY DIRECT SUPERVISION AND THAT I AM A DULY LICENSED LANDSCAPE ARCHITECT UNDER THE LAWS OF THE STATE OF MINNESOTA.
REVIEW PLAN
 SAMUEL J. KESSEL
 LIC. NO. 50677 DATE XX/XX/2023



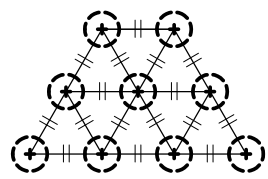
1960 PREMIER DRIVE
 MANKATO, MINNESOTA 56001
 Phone: (507) 625-4171
 Email: Mankato@bolton-menk.com
 www.bolton-menk.com



DESIGNED	NO.	ISSUED FOR	DATE
SJM/CCC			
DRAWN			
CCC			
CHECKED			
SJM			
CLIENT PROJ. NO.			
OW1.127006			

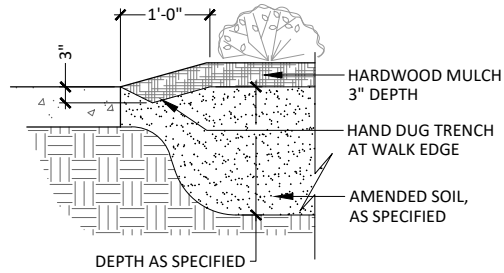
CITY OF MARSHALL, MINNESOTA
 2023 N 3RD ST - W LYON ST IMPROVEMENTS
 LANDSCAPE PLANS
 LANDSCAPE PLAN

SHEET
L2.04

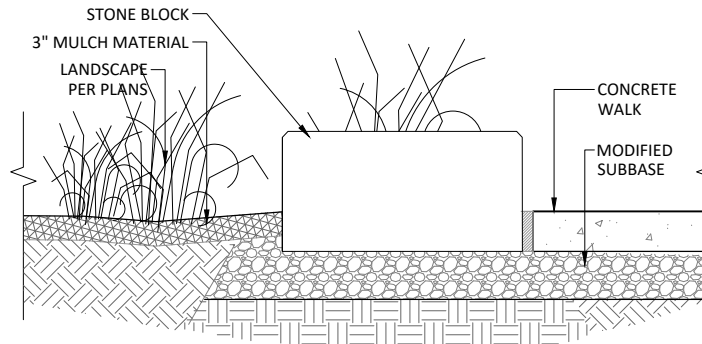


- NOTES:
- O.C. TRIANGULAR PLANT SPACING PER PLANS
 - AREAS IDENTIFIED ON PLANTING PLAN AS O.C. SHALL BE TRIANGULAR SPACED
 - SEE PLANTING PLAN/SCHEDULE FOR SPECIES

1 PERENNIAL PLANT SPACING
SCALE: N.T.S.



2 PLANTING EDGE AT HARDSCAPE SURFACE
SCALE: N.T.S.



BOULDER GENERAL NOTES

- SEE PLAN FOR LOCATIONS. FIELD VERIFY LOCATION BY OWNER'S REPRESENTATIVE.
- 2'X2'X4' STONE BLOCK
- STONE BLOCK, COLOR TO VARY - CONTRACTOR TO SUBMIT STONE TYPE AND COLOR FOR APPROVAL

CONTACT: TODD OLSON
800.328.5040
tolson@coldspringusa.com

3 DECORATIVE BOULDER SETTING DETAIL
SCALE: N.T.S.

PLANT SCHEDULE

OVERSTORY TREES	QTY	BOTANICAL NAME	COMMON NAME	SIZE	CONTAINER
CO	5	CELTIS OCCIDENTALIS	COMMON HACKBERRY	2.5" CAL.	B&B
GA	7	GINKGO BILOBA 'AUTUMN GOLD'	AUTUMN GOLD MAIDENHAIR TREE	2.5" CAL.	B&B
GI	6	GLEDITSIA TRIACANTHOS INERMIS 'SKYCOLE'	SKYLINE® HONEY LOCUST	2.5" CAL.	B&B
QB	6	QUERCUS BICOLOR	SWAMP WHITE OAK	2.5" CAL.	B&B
TB	2	TILIA AMERICANA 'BOULEVARD'	BOULEVARD AMERICAN LINDEN	2.5" CAL.	B&B
UP	6	ULMUS AMERICANA 'PRINCETON'	PRINCETON AMERICAN ELM	2.5" CAL.	B&B

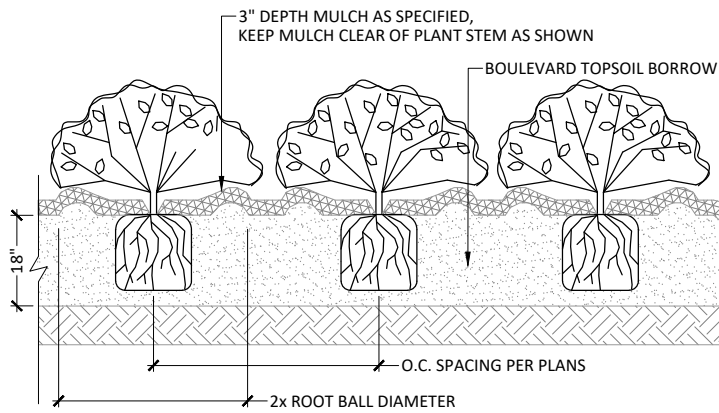
SHRUBS	QTY	BOTANICAL NAME	COMMON NAME	SIZE	SPREAD
LR	75	DIERVILLA X 'G2X88544'	KODIAK® ORANGE DIERVILLA	#5 CONT.	36" O.C.
RG	7	RHUS AROMATICA 'GRO-LOW'	GRO-LOW FRAGRANT SUMAC	#5 CONT.	60" O.C.

BULBS	QTY	BOTANICAL NAME	COMMON NAME	SIZE	SPREAD
ND	210	NARCISSUS X 'DUTCH MASTER'	DUTCH MASTER DAFFODIL	1 GAL.	1.5'-2'

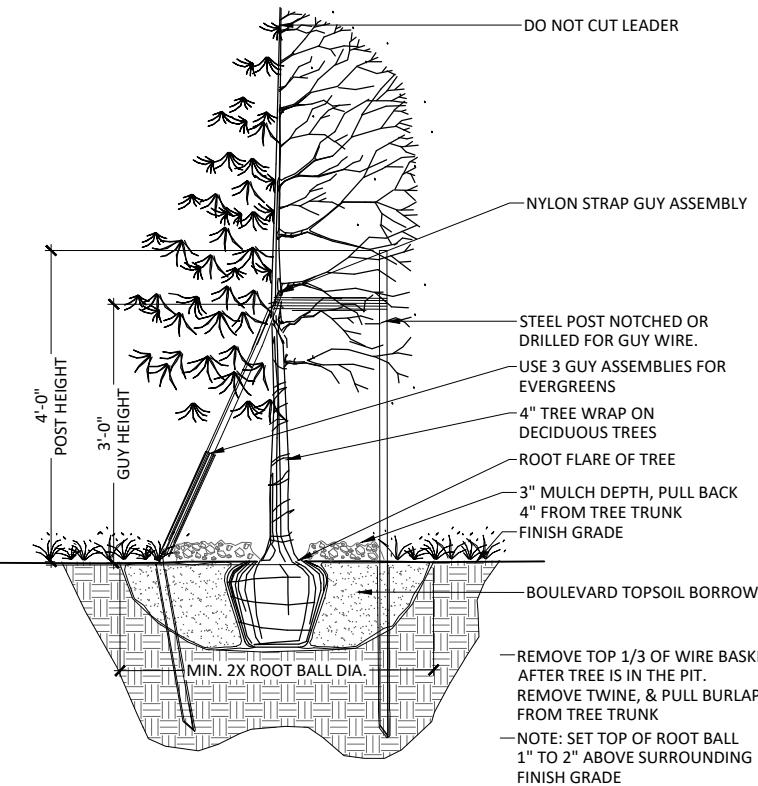
PERENNIALS	QTY	BOTANICAL NAME	COMMON NAME	SIZE	SPREAD
CM	42	COREOPSIS X 'MOONBEAM'	MOONBEAM TICKSEED	#1 CONT.	18" O.C.
EW	47	ECHINACEA PURPUREA 'PAS702917'	POWWOW® WILD BERRY CONEFLOWER	#1 CONT.	18" O.C.
HO	114	HEMEROCALLIS X 'STELLA DE ORO'	STELLA DE ORO DAYLILY	#1 CONT.	18" O.C.
SC	115	SCHIZACHYRIUM SCOPARIUM 'CAROUSEL'	CAROUSEL LITTLE BLUESTEM	#1 CONT.	24" O.C.
SM	82	SEDUM X 'MR. GOODBUD'	MR. GOODBUD STONECROP	#1 CONT.	18" O.C.
SH	158	SPOROBOLUS HETEROLEPIS	PRAIRIE DROPSSEED	#1 CONT.	24" O.C.

GENERAL NOTES:

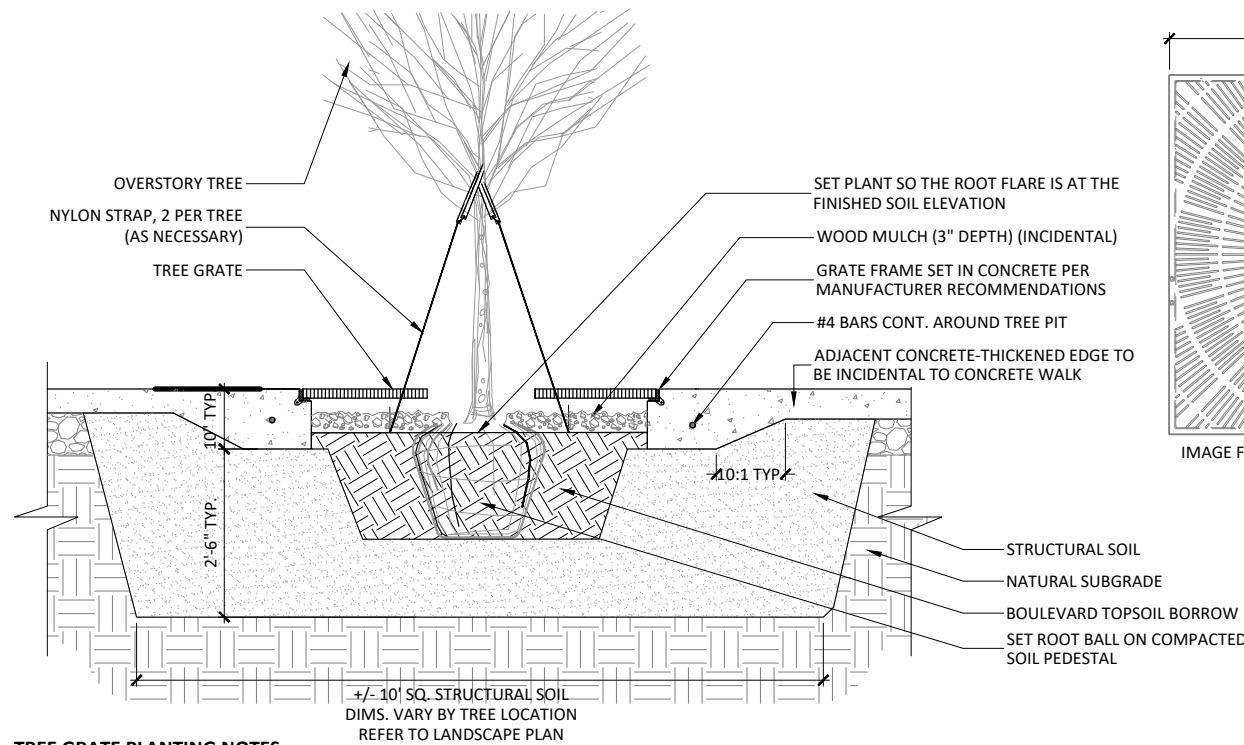
- MASTER PLANT SCHEDULE: ALL PLANT MATERIALS ARE LISTED IN THE MASTER PLANT SCHEDULE. IF THERE IS A CONFLICT BETWEEN THE QUANTITIES SHOWN ON THE DRAWING AND THE QUANTITIES SHOWN IN THE PLANT SCHEDULE, THE PLAN QUANTITIES SHALL PREVAIL.
- ALL DISTURBED AREAS SHALL RECEIVE SOD PER EROSION AND SEDIMENT CONTROL PLANS.
- CONTRACTOR TO PRESERVE AND PROTECT EXISTING TREES AND SHRUBS, UNLESS OTHERWISE NOTED. ANY PLANT MATERIAL DAMAGED DUE TO CONTRACTOR NEGLIGENCE SHALL BE REPLACED AT CONTRACTOR'S EXPENSE.



4 PERENNIAL / SHRUB PLANTING
SCALE: N.T.S.



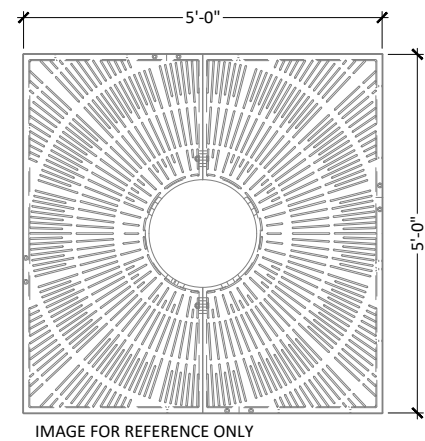
5 TREE PLANTING
SCALE: N.T.S.



TREE GRATE PLANTING NOTES:

- TREE GRATE - NEENAH METROPOLITAN COLLECTION R-8707 TREE GRATE AND FRAME OR APPROVED (5'X5') EQUAL
 - CAST IRON / NATURAL FINISH
 - NO OPENINGS GREATER THAN 1/4"
- REFER TO MANUFACTURER'S SPECIFICATIONS FOR INSTALLATION DETAILS
- CONTRACTOR TO USE CONCRETE EMBEDDED "L" FRAME ON ALL SIDES OF GRATE ADJACENT TO CONCRETE. SECURE PER MANUFACTURER RECOMMENDATIONS
- EACH NEW TREE PIT SHALL CONTAIN APPROXIMATELY 10 CY OF STRUCTURAL SOIL (10'X10'X2.5' DEEP)
- TREE PLANTINGS WHERE THE TREE PIT IS OPEN, BLVD. TOPSOIL SHOULD BE PLACED AROUND THE TREE BALL AND ALL OPEN PLANTING AREA. STRUCTURAL SOIL SHOULD BE PLACED UNDER THE BALL TO PREVENT TREE BALL SUBSIDENCE.

6 TYPICAL SECTION: TREE GRATE & STRUCTURAL SOIL



© Bolton & Menk, Inc. 2023. All Rights Reserved. 14:MARSHALL1271065-0001-0001-0001.dwg, 2/9/2023 7:51:41 PM

REVIEW PLAN



1960 PREMIER DRIVE
MANKATO, MINNESOTA 56001
Phone: (507) 625-4171
Email: Mankato@bolton-menk.com
www.bolton-menk.com

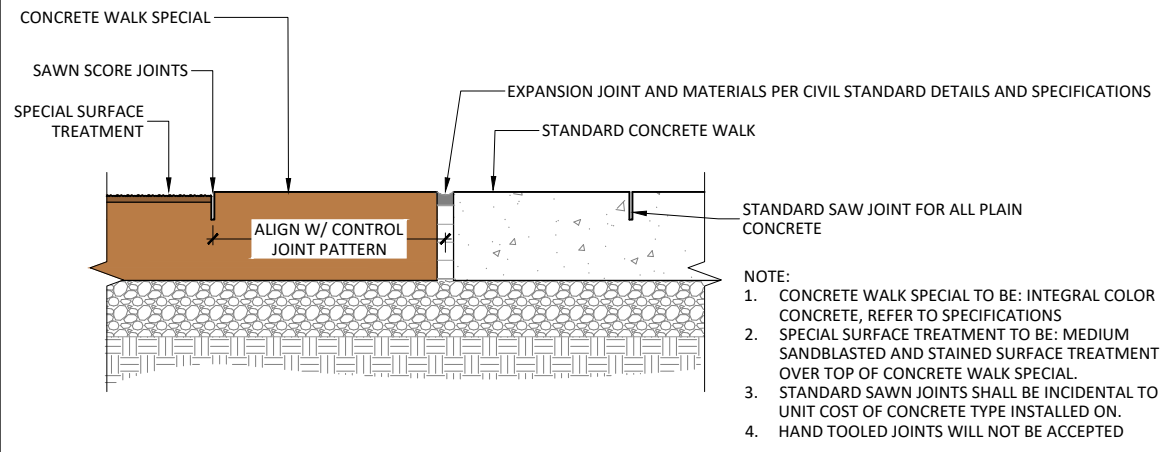


DESIGNED	NO.	ISSUED FOR	DATE
SJM/CCC			
DRAWN			
CCC			
CHECKED			
SJM			
CLIENT PROJ. NO.			
OW1-127006			

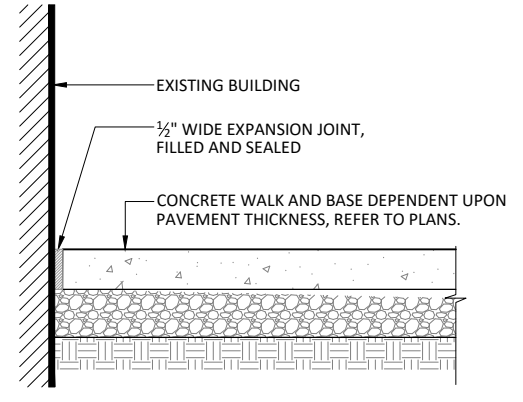
CITY OF MARSHALL, MINNESOTA
2023 N 3RD ST - W LYON ST IMPROVEMENTS
LANDSCAPE DETAILS
PLANTING DETAILS

SHEET

L3.01

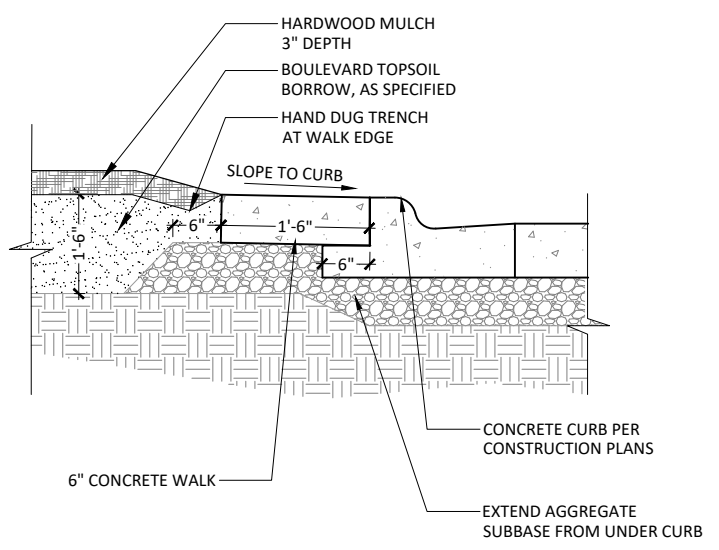


- NOTE:
1. CONCRETE WALK SPECIAL TO BE: INTEGRAL COLOR CONCRETE, REFER TO SPECIFICATIONS
 2. SPECIAL SURFACE TREATMENT TO BE: MEDIUM SANDBLASTED AND STAINED SURFACE TREATMENT OVER TOP OF CONCRETE WALK SPECIAL.
 3. STANDARD SAWN JOINTS SHALL BE INCIDENTAL TO THE UNIT COST OF CONCRETE TYPE INSTALLED ON.
 4. HAND TOOLED JOINTS WILL NOT BE ACCEPTED



1 TYPICAL SECTION: CONCRETE SIDEWALK TYPES AND JOINTS

2 CONCRETE SIDEWALK AT BUILDING



3 TYPICAL SECTION: LANDSCAPE BED
SCALE: N.T.S.

© Bolton & Menk, Inc. 2023. All Rights Reserved. P:\MANKATO\1127\006\CAD\C3D\127006\DWG_29/2023_7:51:44 PM

REVIEW PLAN



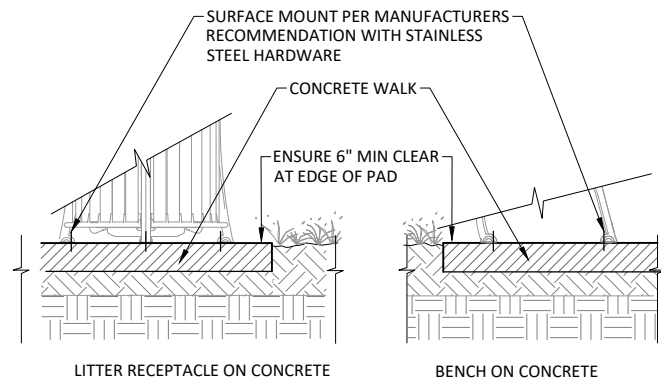
1960 PREMIER DRIVE
MANKATO, MINNESOTA 56001
Phone: (507) 625-4171
Email: Mankato@bolton-menk.com
www.bolton-menk.com



DESIGNED	NO.	ISSUED FOR	DATE
SJM/CCC			
DRAWN			
CCC			
CHECKED			
SJM			
CLIENT PROJ. NO.			
OW1-127006			

CITY OF MARSHALL, MINNESOTA
2023 N 3RD ST - W LYON ST IMPROVEMENTS
LANDSCAPE DETAILS
SITE FURNISHING DETAILS

SHEET
L3.02



- NOTES:
1. REFER TO SPECS FOR MODEL AND MANUFACTURERS
 2. FIELD VERIFY LOCATION BY LANDSCAPE ARCHITECT
 3. SHIM TO LEVEL SITE FURNISHINGS

1 TYPICAL SECTION: SURFACE MOUNT FURNISHINGS



- BIKE RACK:**
1. MANUFACTURER - VICTOR STANLEY
 2. MODEL - BRHS-101, CYCLE SENTRY
 3. FINISH - POWDERCOAT, BLACK
 4. SURFACE MOUNT

OR APPROVED EQUAL

INSTALLATION ONLY, FURNISHING TO BE PROVIDED BY OTHERS.

CONTACT: BECKY MCNAMARA
301.855.8300 x. 375
beckym@victorystanley.com

- BENCH TYPE 1:**
1. MANUFACTURER - VICTOR STANLEY
 2. MODEL - FM-324, FRAMERS MODERN COLLECTION, 6' LENGTH
 3. FINISH - POWDERCOAT, BLACK
 4. SURFACE MOUNT
 5. WOOD: IPE

OR APPROVED EQUAL

INSTALLATION ONLY, FURNISHING TO BE PROVIDED BY OTHERS.

- TRASH RECEPTACLE:**
1. MANUFACTURER - VICTOR STANLEY
 2. MODEL - SDC-36, STEEL SITES SERIES, 36 GALLON, SIDE DOOR OPENING
 3. STANDARD LINER
 4. SURFACE MOUNT

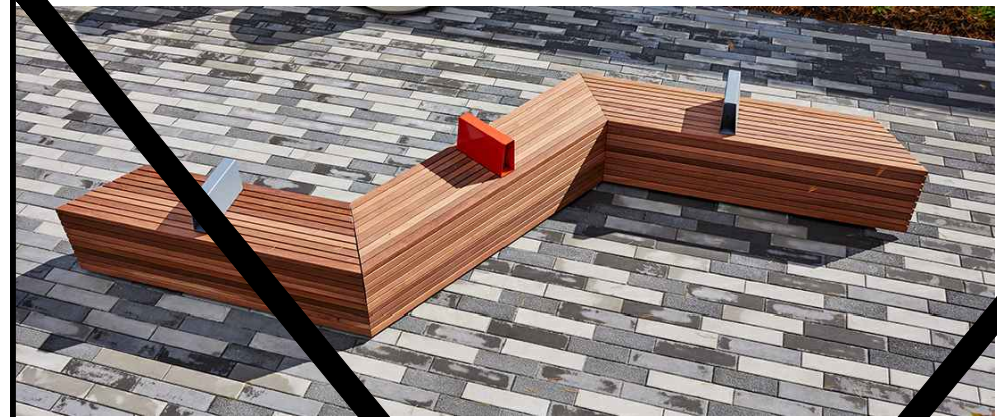
OR APPROVED EQUAL

INSTALLATION ONLY, FURNISHING TO BE PROVIDED BY OTHERS.

- RECYCLING CONTAINER:**
1. MANUFACTURER - VICTOR STANLEY
 2. MODEL - SDC-36, STEEL SITES SERIES, 36 GALLON, SIDE DOOR OPENING
 3. STANDARD LINER
 4. RAISED BAND AND DECALS
 5. SIDE DEPOSIT
 6. SURFACE MOUNT

OR APPROVED EQUAL

INSTALLATION ONLY, FURNISHING TO BE PROVIDED BY OTHERS.



RIGHT 45	DEPTH	LENGTH	HEIGHT	LEFT 45	DEPTH	LENGTH	HEIGHT
	18"		18"		18"	77"	18"

BENCH TYPE 2 (A):

- 1.
- 2.
- 3.

NOT IN CONTRACT

OR APPROVED EQUAL
PRODUCT & INSTALLATION BY OTHERS.

BENCH TYPE 2 (B):

OR APPROVED EQUAL
PRODUCT & INSTALLATION BY OTHERS.

STRAIGHT W/ LEFT 45	DEPTH	LENGTH	HEIGHT
	18"	67"	18"

BENCH TYPE 2 (C):

1. MANUFACTURER: LANDSCAPE FORMS
2. MODEL: PARALLEL 42, STRAIGHT
3. WOOD: IPE

OR APPROVED EQUAL
PRODUCT & INSTALLATION BY OTHERS.

CONTACT:

STACY ERNST
816-444-4376
sitesource@landscapeforms.com

2 SITE FURNISHINGS

NOTE: FOR PRODUCT REFERENCE ONLY, CONTRACTOR TO INSTALL ONLY, OWNER TO PROVIDE PRODUCT FOR INSTALLATION

© Bolton & Menk, Inc. 2023. All Rights Reserved. 11/14/2023 11:27:06 AM C:\E:\DWG\2023\202301.dwg 2/9/2023 7:51:47 PM

REVIEW PLAN



1960 PREMIER DRIVE
MANKATO, MINNESOTA 56001
Phone: (507) 625-4171
Email: Mankato@bolton-menk.com
www.bolton-menk.com



DESIGNED	NO.	ISSUED FOR	DATE
SJM/CCC			
DRAWN			
CCC			
CHECKED			
SJM			
CLIENT PROJ. NO.			
OW1-127006			

CITY OF MARSHALL, MINNESOTA
2023 N 3RD ST - W LYON ST IMPROVEMENTS
LANDSCAPE DETAILS
SITE FURNISHING DETAILS

SHEET
L3.03

MANUFACTURER'S NOTES:

LIGHT COLUMN: OPEN PILLAR, 600 CM HEIGHT, POWDER-COAT

MANUFACTURER: STREETLIFE

MODEL NUMBER: OP-PIL-WI-600-PC

COLOR: TO BE SELECTED BY OWNER

CONTACT: SONNO WITJES

switjes@streetlife.com

484 496 8280

LIGHT FIXTURE & CONTROLLER:

LIGHT PRODUCT: PROSPOT 6 COLOR-CHANGING LED

MANUFACTURER: INSIGHT LIGHTING

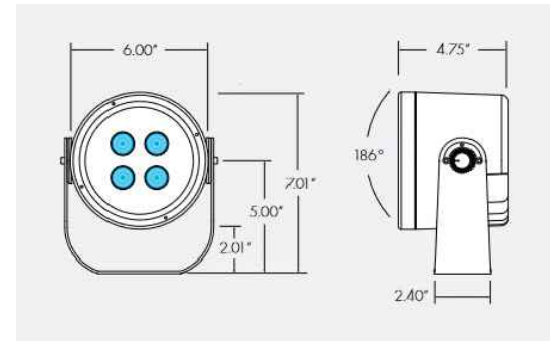
MODEL NUMBER: PS6-HO-RGB40-Q-20-TR-120 DMXFX-TBL

CONTROLLERS: PHAROS BY INSIGHT LIGHTING

CONTACT: MLAZGAR ASSOCIATES

DARREN STRAFELDA

952-513-7511



LIGHT COLUMN MONUMENT NOTES:

1. MEASUREMENT AND PAYMENT FOR GATEWAY MONUMENT COLUMN WITH LIGHT SHALL INCLUDE ALL SITE PREP, MATERIALS, AND LABOR REQUIRED, INCLUDING BUT NOT LIMITED TO EXCAVATION, CONCRETE FOOTINGS, STEEL STRUCTURE, LIGHT FIXTURE, ELECTRICAL CONNECTIONS DATA CONNECTIONS, METAL WORK, AND ALL ITEMS NECESSARY FOR CONSTRUCTION, FABRICATION, AND INSTALLATION COMPLETE.
2. CONTRACTOR SHALL PROVIDE SHOP DRAWINGS OF ALL MATERIALS AND CONNECTIONS SIGNED BY CONTRACTOR'S STRUCTURAL ENGINEER IF CUSTOM FABRICATED FOR ALL METAL WORK. ALL MATERIAL SIZING IS FOR AESTHETIC PURPOSES ONLY. CONTRACTOR RESPONSIBLE TO CONFIRM STRUCTURAL SUITABILITY AND FABRICATION FOR ANY CUSTOM FABRICATION. SHOP DRAWINGS SHALL BE SUBMITTED TO ENGINEER FOR REVIEW PRIOR TO BEGINNING OF CONSTRUCTION. CONTRACTOR'S SCHEDULE SHALL ALLOW 15 CALENDAR DAYS FOR ENGINEER'S REVIEW.
3. ALL CONNECTIONS SHALL FOLLOW MANUFACTURER RECOMMENDATION AND SHOP DRAWINGS
4. ALL METAL COMPONENTS SHALL POWDER COATED PER MANUFACTURER'S STANDARDS. COLOR TO BE SELECTED FROM MANUFACTURER'S STANDARD COLORS. CONTRACTOR TO SUBMIT COLOR CHIPS FOR REVIEW AND SELECTION BY THE OWNER.
5. ALL EXPOSED CONCRETE TO BE FINISHED WITH A SLURRY COAT RUBBED SMOOTH TO CREATE A UNIFORM FINISH.

LIGHTING CONTROLLER NOTE:

1. LIGHTING CONTROLLER AND TEMP CONTROLLED CABINET TO BE PAID FOR AS SEPARATE BID ITEM. CONTRACTOR TO COORDINATE LIGHTING CONTROL CABINET AND LOCATION FOR MOUNTING WITH CITY OF MARSHALL AND MMU. CIRCUITRY FOR CONTROLLER AND DMX WIRE TO COMMUNICATE WITH THE LIGHT SHALL BE CONSIDERED AS PART OF THE LIGHTING CONTROLLER BID ITEM.
2. CABINET AND HEATER TO BE...



SPECIFICATION

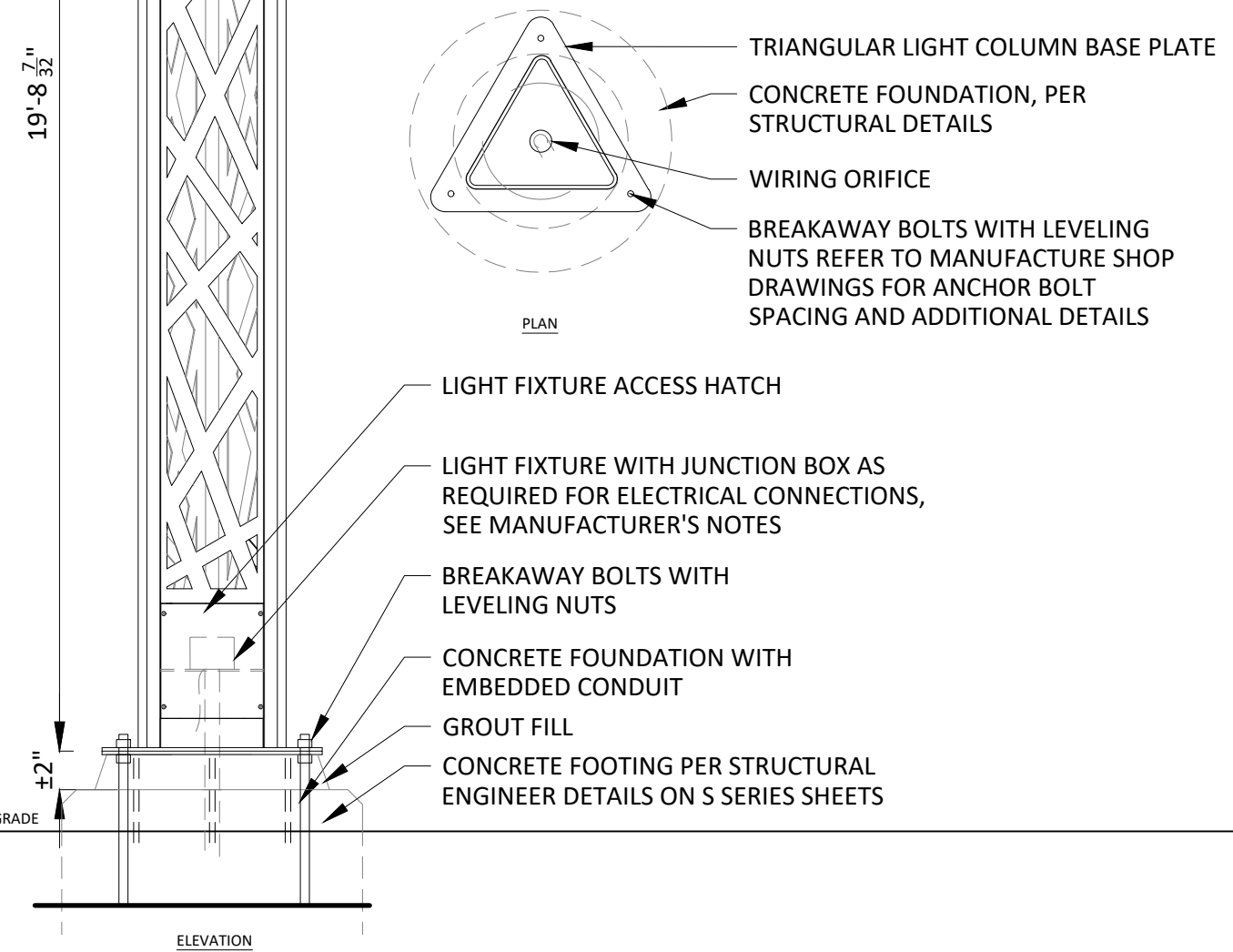
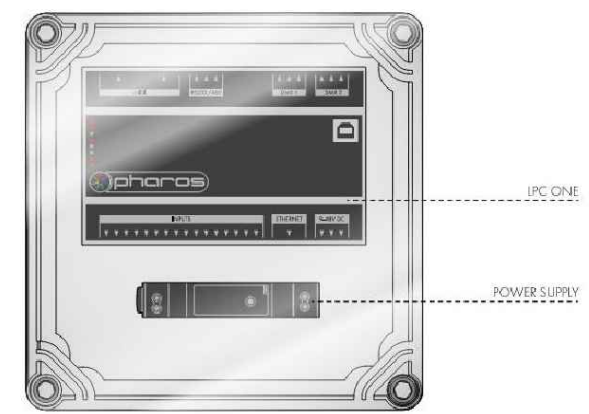
PHAROS

- PRODUCT
 - PHAROS PHAROS
- SYSTEM TYPE
 - PHAROS ONE P1 (PC ON, AND POWER SUPPLY)
 - PHAROS ONE + TOUCH P1T (PC ON, POWER SUPPLY, TIS AND TOE)
 - PHAROS TWO + TOUCH P2T (PC TWO, POWER SUPPLY, TIS AND TOE)
 - PHAROS FOUR + TOUCH P4T (PC FOUR, POWER SUPPLY, TIS AND TOUCHPORT 6074)

SYSTEM TYPES

PHAROS ONE (P1)

AT Universe DMX control system perfect for projects that are looking for System Control where all fixtures will be respond the same way. This Pharos One Package (P1) consist pre-assembled in a IP67 enclosure with a 48V Power supply and 2 DMX outputs.



1 GATEWAY MONUMENT COLUMN W/LIGHT
SCALE: NTS

© Bolton & Menk, Inc. 2023. All Rights Reserved. 11/24/2023 11:27:06 AM C:\E:\BOLMEN\DWG_2/9/2023 7:51:50 PM

REVIEW PLAN



1960 PREMIER DRIVE
MANKATO, MINNESOTA 56001
Phone: (507) 625-4171
Email: Mankato@bolton-menk.com
www.bolton-menk.com



DESIGNED	NO.	ISSUED FOR	DATE
SJM/CCC			
DRAWN			
CCC			
CHECKED			
SJM			
CLIENT PROJ. NO.			
OW1-127006			

CITY OF MARSHALL, MINNESOTA
2023 N 3RD ST - W LYON ST IMPROVEMENTS
LANDSCAPE DETAILS
SITE FURNISHING DETAILS

SHEET
L3.04