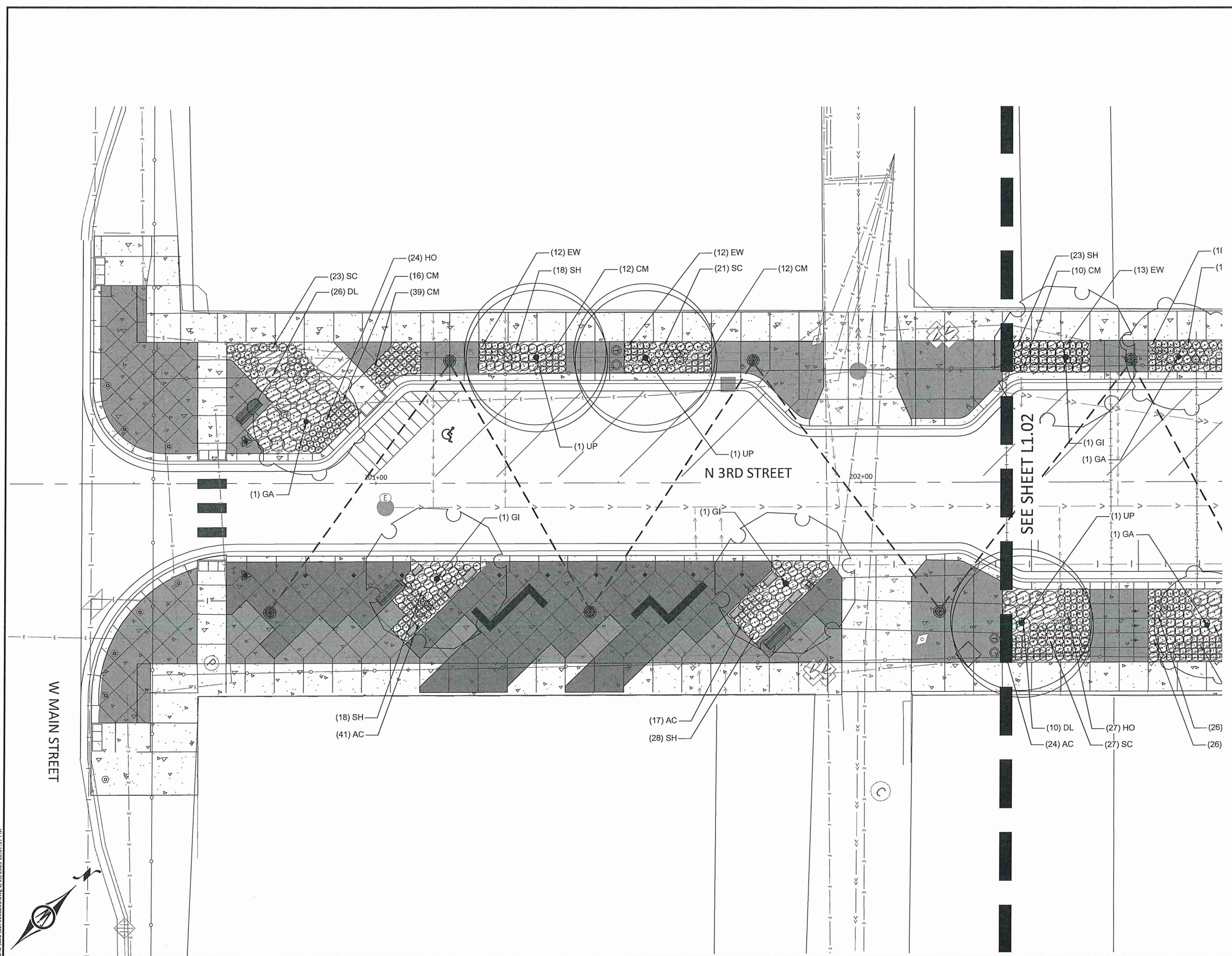
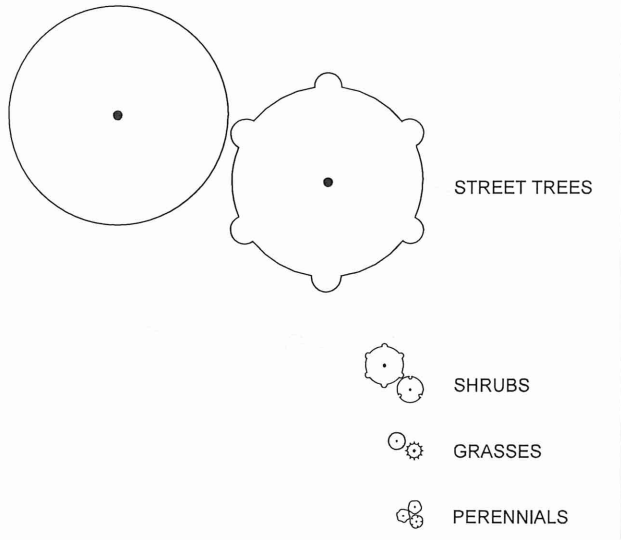


KEY MAP

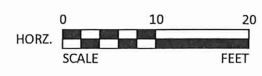


SEE SHEET L1.02

LEGEND:



© Bolton & Menk, Inc. 2023. All Rights Reserved. H:\MARSH\DWG\1127006\CAD\1127006L201.dwg 1/13/2023 12:07:17 PM



I HEREBY CERTIFY THAT THIS PLAN, SPECIFICATION, OR REPORT WAS PREPARED BY ME OR UNDER MY DIRECT SUPERVISION AND THAT I AM A DULY LICENSED LANDSCAPE ARCHITECT UNDER THE LAWS OF THE STATE OF MINNESOTA.

REVIEW PLAN

SAMUEL J. KESSEL
 LIC. NO. 50677 DATE XX/XX/2023



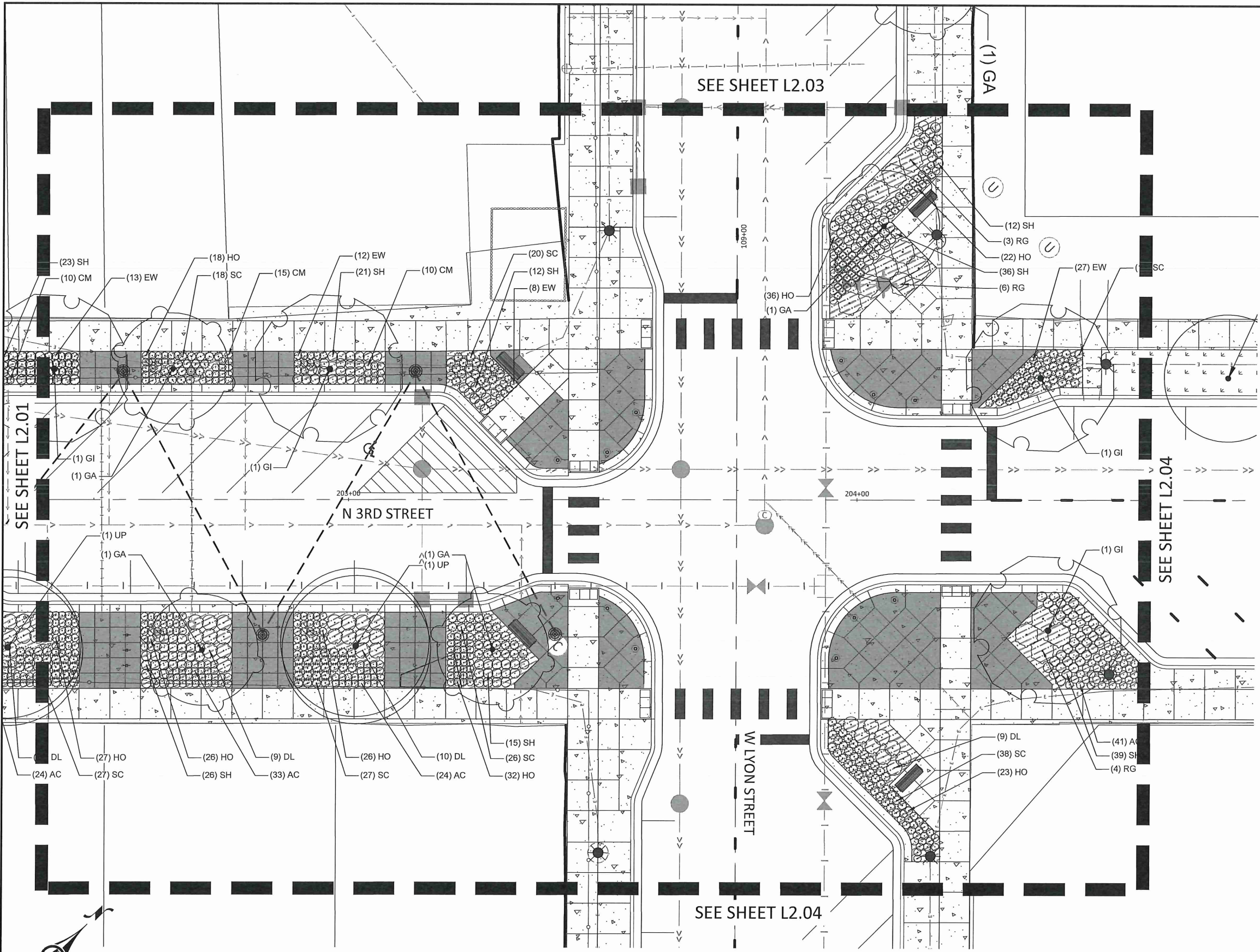
1960 PREMIER DRIVE
 MANKATO, MINNESOTA 56001
 Phone: (507) 625-4171
 Email: Mankato@bolton-menk.com
 www.bolton-menk.com



DESIGNED	NO.	ISSUED FOR	DATE
SJM/CCC			
DRAWN			
CCC			
CHECKED			
SJM			
CLIENT PROJ. NO.			
0W1.127006			

CITY OF MARSHALL, MINNESOTA
 2023 N 3RD ST - W LYON ST IMPROVEMENTS
 LANDSCAPE PLAN

SHEET
L2.01

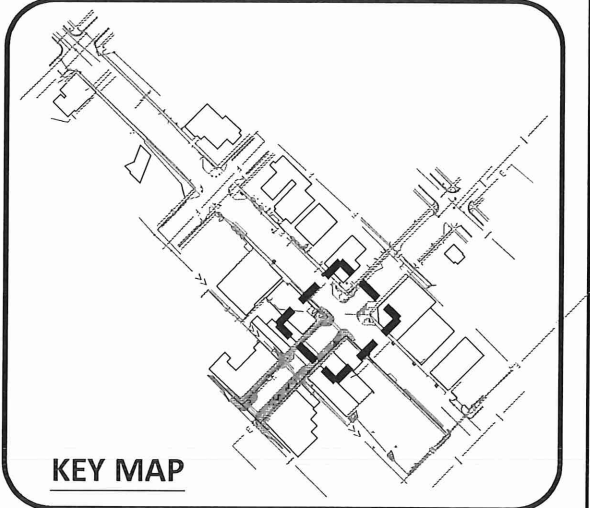


SEE SHEET L2.03

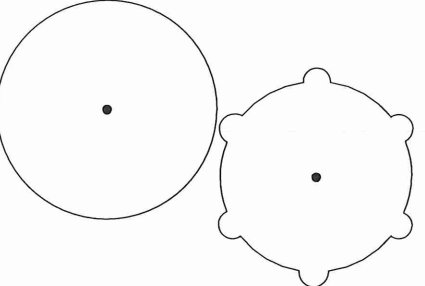



SEE SHEET L2.01

SEE SHEET L2.04

SEE SHEET L2.04



LEGEND:

-  STREET TREES
-  SHRUBS
-  GRASSES
-  PERENNIALS

© Bolton & Menk, Inc. 2023. All Rights Reserved. H:\MARKETING\2023\CAD\DWG\L2\2006.L2.L2006.001.dwg 1/13/2023 12:07:26 PM



I HEREBY CERTIFY THAT THIS PLAN, SPECIFICATION, OR REPORT WAS PREPARED BY ME OR UNDER MY DIRECT SUPERVISION AND THAT I AM A DULY LICENSED LANDSCAPE ARCHITECT UNDER THE LAWS OF THE STATE OF MINNESOTA.

REVIEW PLAN
SAMUEL J. KESSEL
LIC. NO. 50677 DATE XX/XX/2023



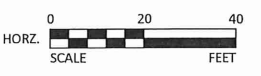
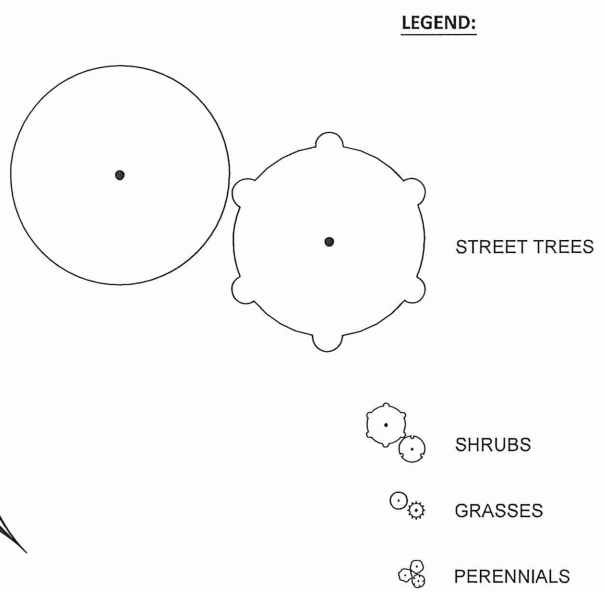
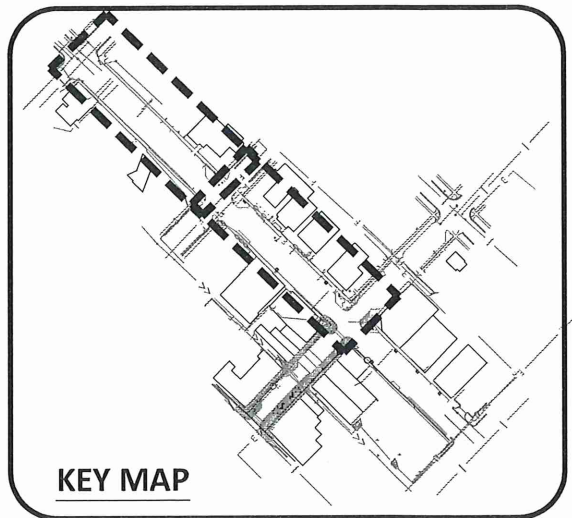
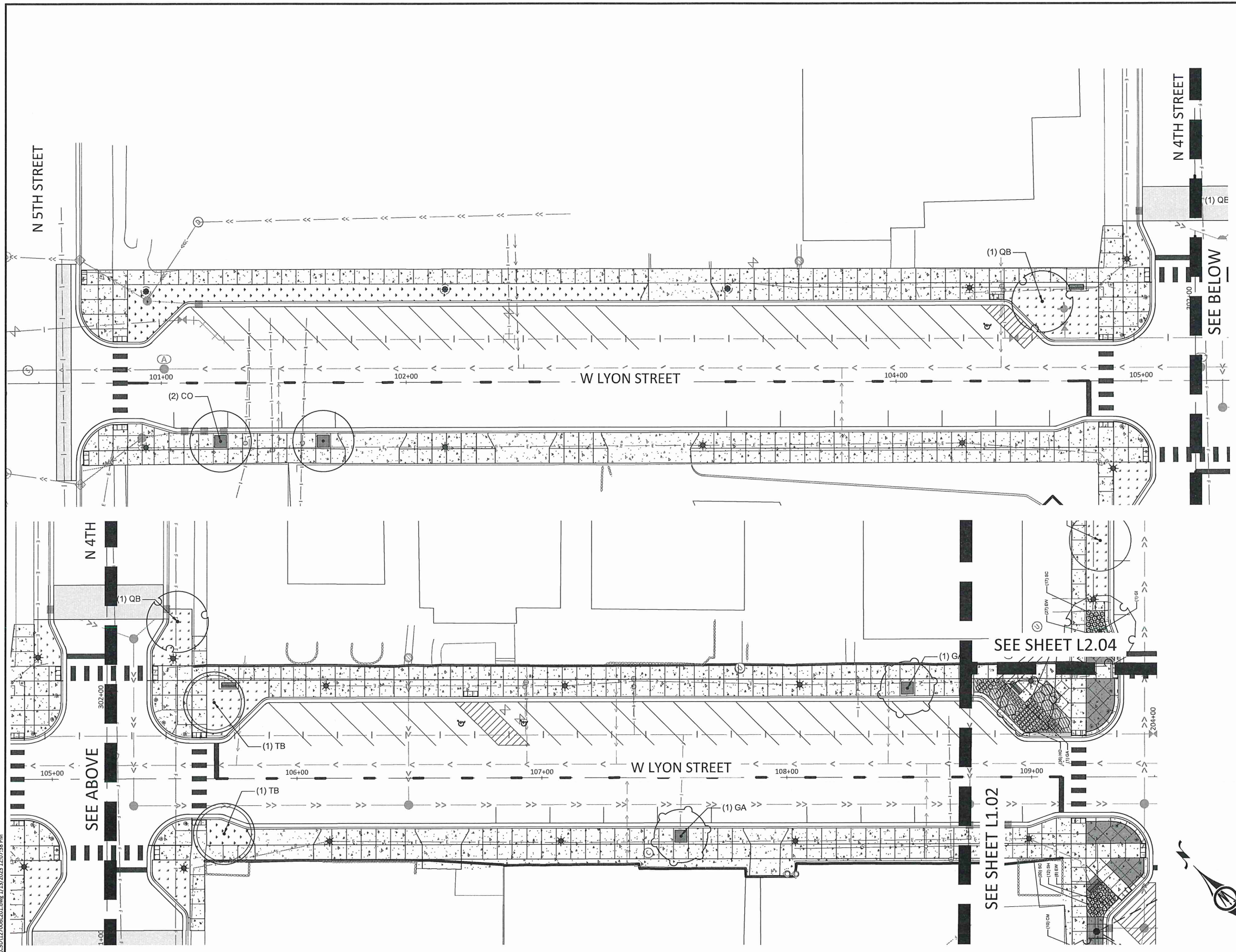
1960 PREMIER DRIVE
MANKATO, MINNESOTA 56001
Phone: (507) 625-4171
Email: Mankato@bolton-menk.com
www.bolton-menk.com



DESIGNED	SJM/CCC	NO.	ISSUED FOR	DATE
DRAWN	CCC			
CHECKED	SJM			
CLIENT PROJ. NO.	OW1.127006			

CITY OF MARSHALL, MINNESOTA
2023 N 3RD ST - W LYON ST IMPROVEMENTS
LANDSCAPE PLAN

SHEET
L2.02



I HEREBY CERTIFY THAT THIS PLAN, SPECIFICATION, OR REPORT WAS PREPARED BY ME OR UNDER MY DIRECT SUPERVISION AND THAT I AM A DULY LICENSED LANDSCAPE ARCHITECT UNDER THE LAWS OF THE STATE OF MINNESOTA.

REVIEW PLAN

SAMUEL J. KESSEL
 LIC. NO. 50677 DATE XX/XX/2023



1960 PREMIER DRIVE
 MANKATO, MINNESOTA 56001
 Phone: (507) 625-4171
 Email: Mankato@bolton-menk.com
 www.bolton-menk.com

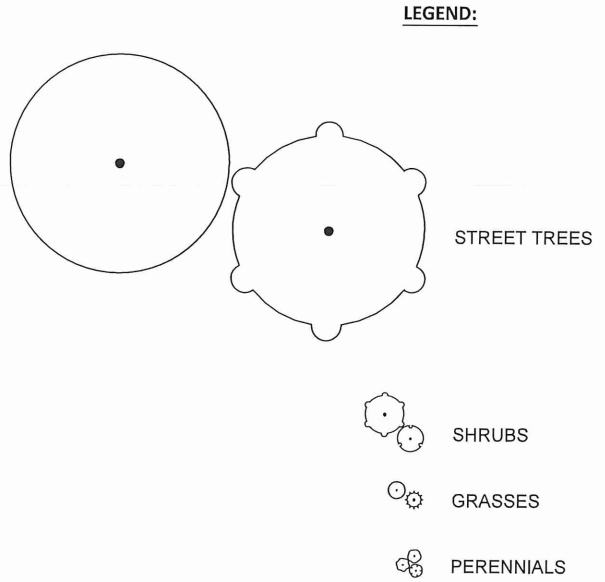
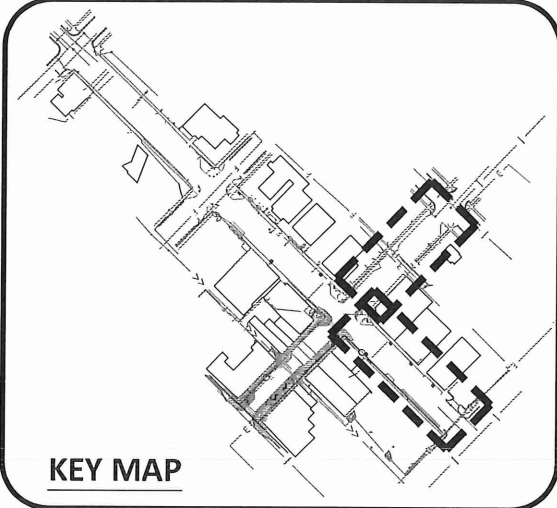
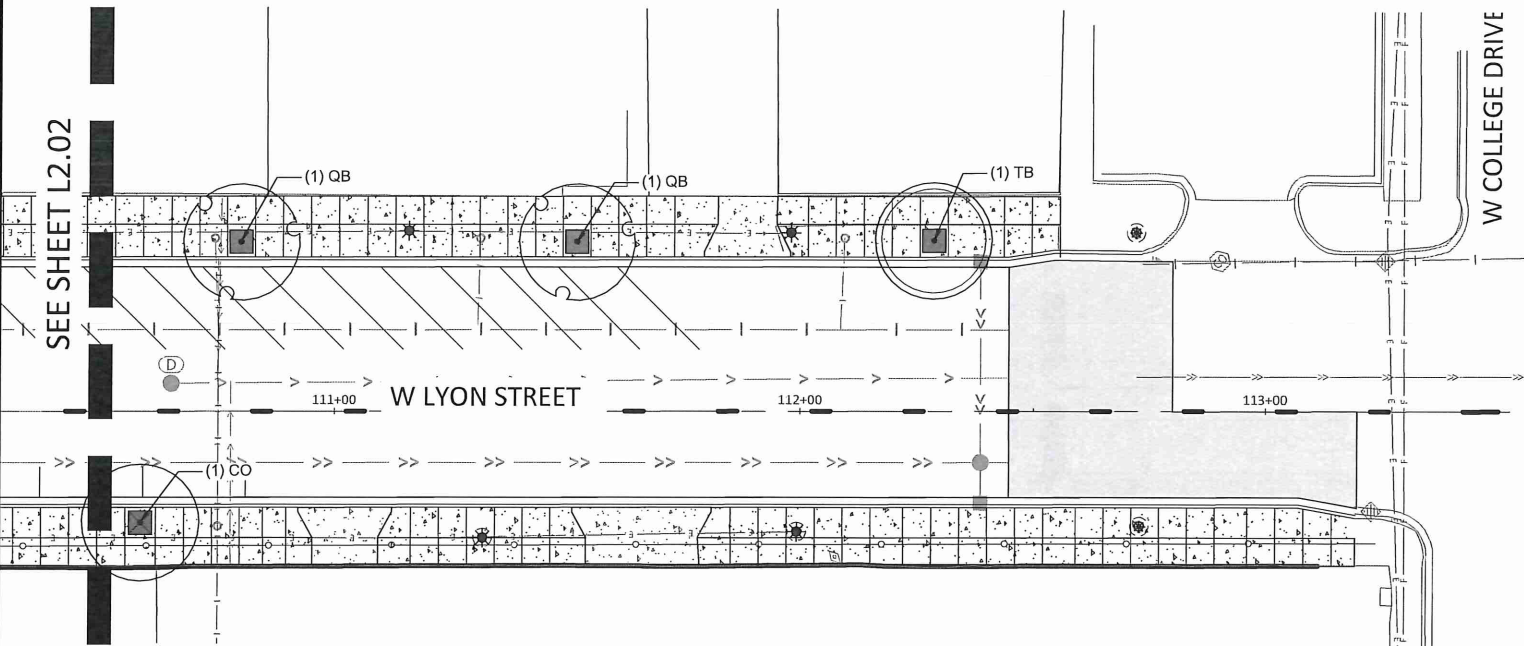
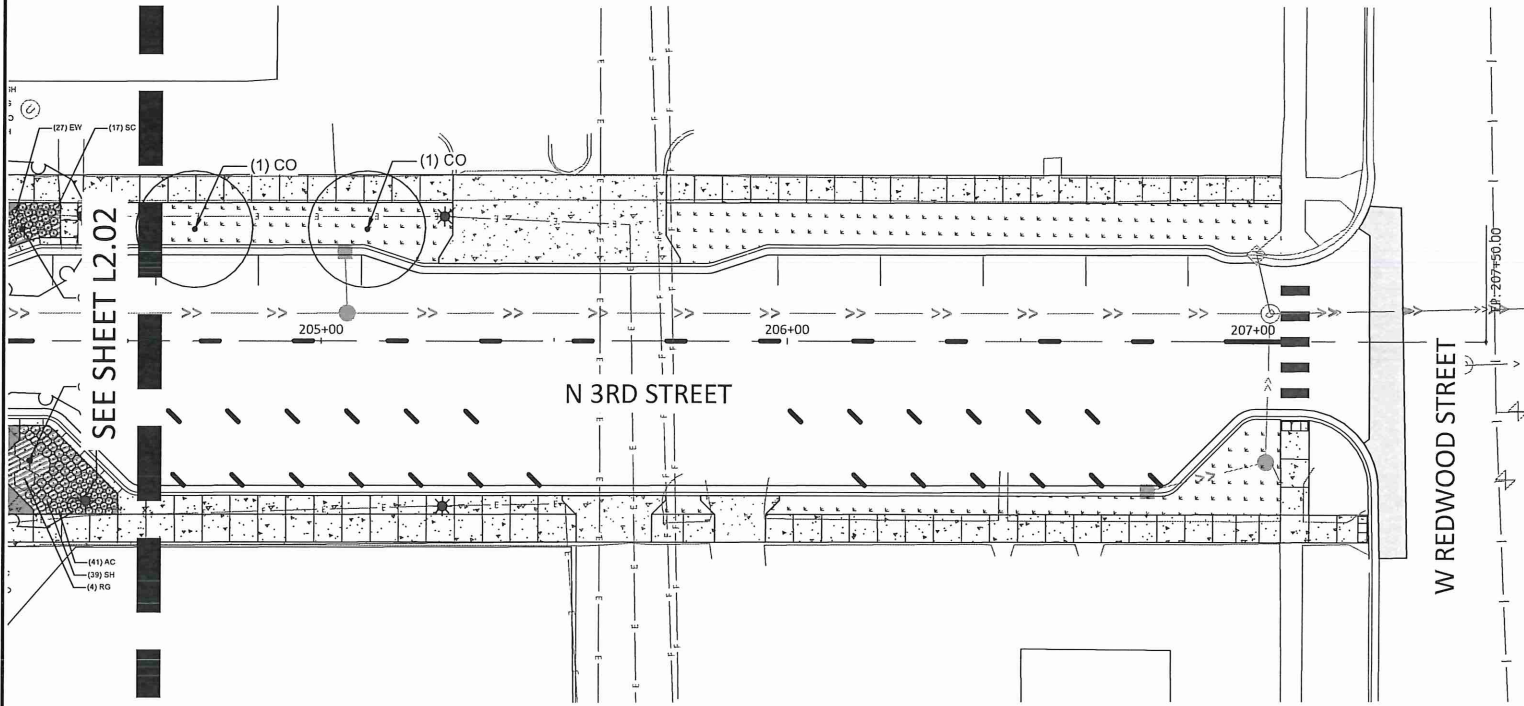


DESIGNED	SJM/CCC	NO.	ISSUED FOR	DATE
DRAWN	CCC			
CHECKED	SJM			
CLIENT PROJ. NO.	OW1.127006			

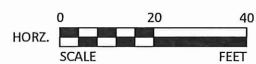
CITY OF MARSHALL, MINNESOTA
 2023 N 3RD ST - W LYON ST IMPROVEMENTS
 LANDSCAPE PLAN

SHEET
L2.03

© Bolton & Menk, Inc. 2023. All Rights Reserved.
 H:\MARS\01\127006\CAD\DWG\127006L203.DWG 1/13/2023 12:07:38 PM



© Bolton & Menk, Inc. 2023. All Rights Reserved.
 H:\MARSH\01127006\CAD\C3D\12706L201.dwg, 1/13/2023 1:07:48 PM



I HEREBY CERTIFY THAT THIS PLAN, SPECIFICATION, OR REPORT WAS PREPARED
 BY ME OR UNDER MY DIRECT SUPERVISION AND THAT I AM A DULY LICENSED
 LANDSCAPE ARCHITECT UNDER THE LAWS OF THE STATE OF MINNESOTA.

REVIEW PLAN
 SAMUEL J. KESSEL
 LIC. NO. 50677 DATE XX/XX/2023



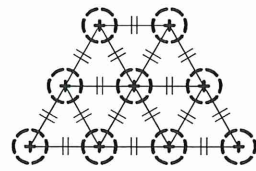
1960 PREMIER DRIVE
 MANKATO, MINNESOTA 56001
 Phone: (507) 625-4171
 Email: Mankato@bolton-menk.com
 www.bolton-menk.com



DESIGNED	NO.	ISSUED FOR	DATE
SJM/CCC			
DRAWN			
CCC			
CHECKED			
SJM			
CLIENT PROJ. NO.			
0W1.127006			

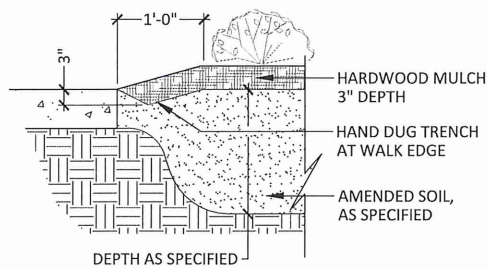
CITY OF MARSHALL, MINNESOTA
 2023 N 3RD ST - W LYON ST IMPROVEMENTS
 LANDSCAPE PLAN

SHEET
L2.04

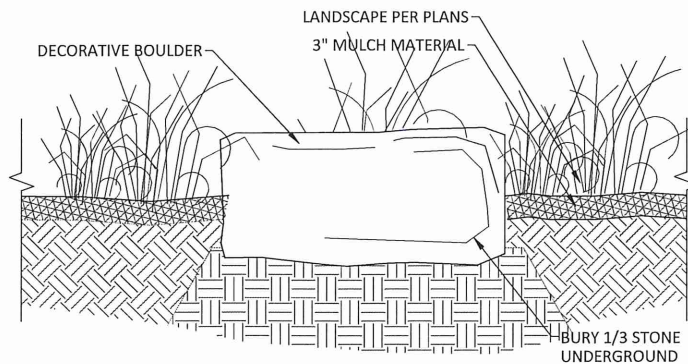


- NOTES:
- O.C. TRIANGULAR PLANT SPACING PER PLANS
 - AREAS IDENTIFIED ON PLANTING PLAN AS O.C. SHALL BE TRIANGULAR SPACED
 - SEE PLANTING PLAN/SCHEDULE FOR SPECIES

1 PERENNIAL PLANT SPACING
SCALE: N.T.S.



2 PLANTING EDGE AT HARDSCAPE SURFACE
SCALE: N.T.S.



BOULDER GENERAL NOTES

- SEE PLAN FOR LOCATIONS. FIELD VERIFY LOCATION BY OWNER'S REPRESENTATIVE.
- BOULDERS TO VARY IN SIZE FROM 2'-3' TALL, 2'-3' WIDE, 2'-3' DEEP
- NATURAL SHAPED BOULDERS, COLOR TO VARY - CONTRACTOR TO SUBMIT BOULDER TYPE AND COLOR FOR APPROVAL

3 DECORATIVE BOULDER SETTING DETAIL
SCALE: N.T.S.

PLANT SCHEDULE

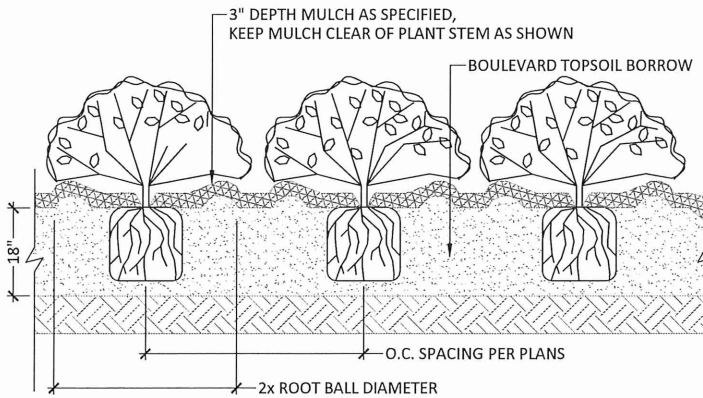
OVERSTORY TREES	QTY	BOTANICAL NAME	COMMON NAME	SIZE	CONTAINER
CO	6	CELTIS OCCIDENTALIS	COMMON HACKBERRY	2.5" CAL.	B&B
GA	8	GINKGO BILOBA 'AUTUMN GOLD'	AUTUMN GOLD MAIDENHAIR TREE	2.5" CAL.	B&B
GI	6	GLEDITSIA TRIACANTHOS INERMIS 'SKYCOLE'	SKYLINE® HONEY LOCUST	2.5" CAL.	B&B
QB	4	QUERCUS BICOLOR	SWAMP WHITE OAK	2.5" CAL.	B&B
TB	3	TILIA AMERICANA 'BOULEVARD'	BOULEVARD AMERICAN LINDEN	2.5" CAL.	B&B
UP	4	ULMUS AMERICANA 'PRINCETON'	PRINCETON AMERICAN ELM	2.5" CAL.	B&B

SHRUBS	QTY	BOTANICAL NAME	COMMON NAME	SIZE	SPREAD
DL	64	DIERVILLA LONICERA	DWARF BUSH HONEYSUCKLE	#5 CONT.	36" O.C.
RG	14	RHUS AROMATICA 'GRO-LOW'	GRO-LOW FRAGRANT SUMAC	#5 CONT.	60" O.C.

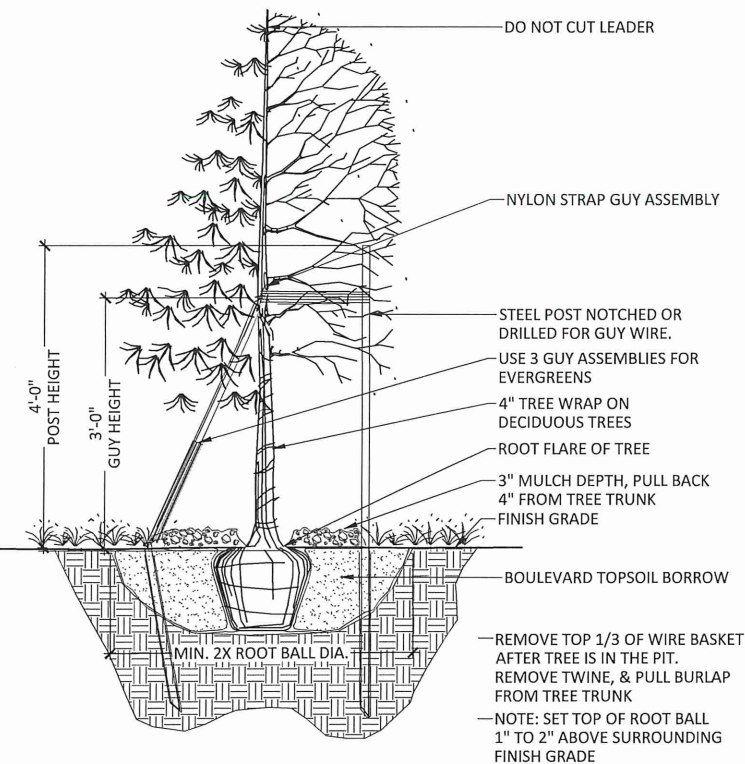
PERENNIALS	QTY	BOTANICAL NAME	COMMON NAME	SIZE	SPREAD
AC	181	ASTILBE X CHINENSIS 'VISIONS'	HAPPY DAY ASTILBE	#1 CONT.	18" O.C.
CM	115	COREOPSIS X 'MOONBEAM'	MOONBEAM TICKSEED	#1 CONT.	18" O.C.
EW	85	ECHINACEA PURPUREA 'PAS702917'	POWWOW® WILD BERRY CONEFLOWER	#1 CONT.	18" O.C.
HO	235	HEMEROCALLIS X 'STELLA DE ORO'	STELLA DE ORO DAYLILY	#1 CONT.	18" O.C.
SC	218	SCHIZACHYRIUM SCOPARIUM 'CAROUSEL'	CAROUSEL LITTLE BLUESTEM	#1 CONT.	24" O.C.
SH	247	SPOROBOLUS HETEROLEPIS	PRAIRIE DROPSEED	#1 CONT.	24" O.C.

GENERAL NOTES:

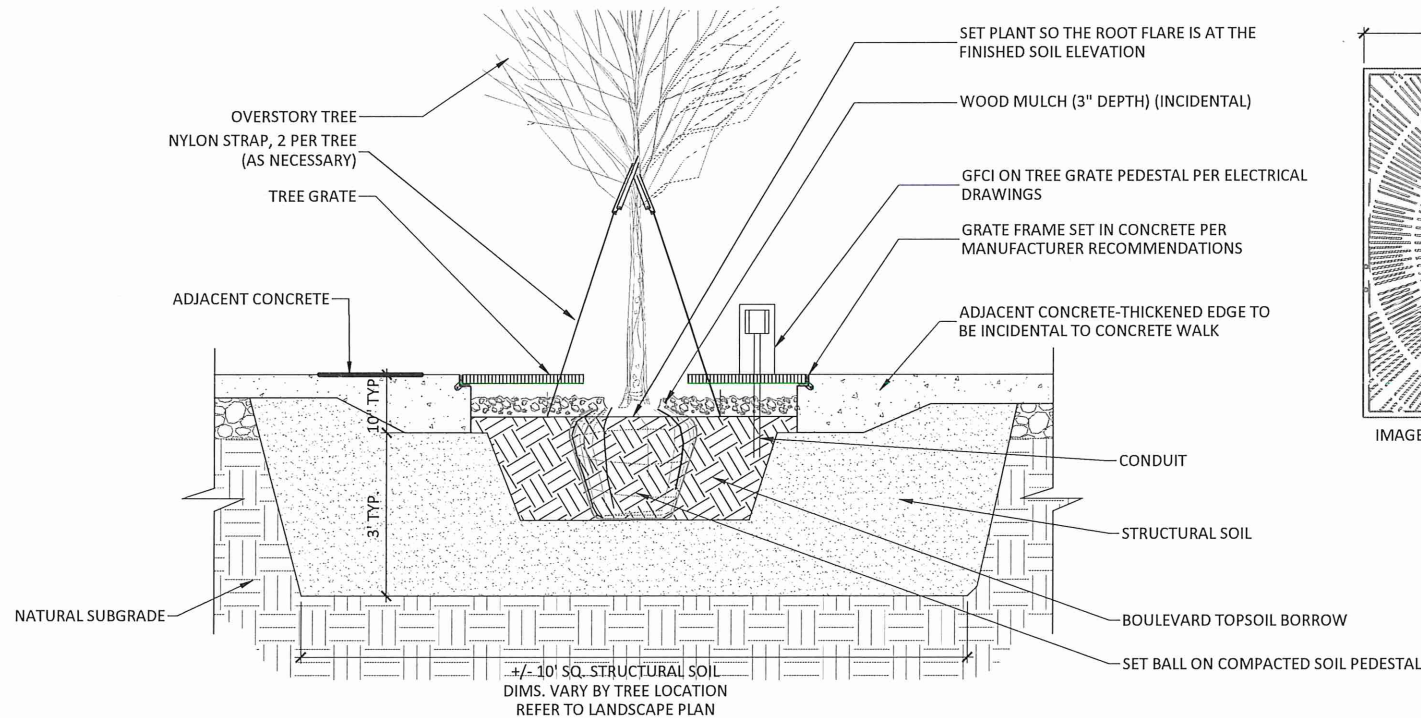
- MASTER PLANT SCHEDULE: ALL PLANT MATERIALS ARE LISTED IN THE MASTER PLANT SCHEDULE. IF THERE IS A CONFLICT BETWEEN THE QUANTITIES SHOWN ON THE DRAWING AND THE QUANTITIES SHOWN IN THE PLANT SCHEDULE, THE PLAN QUANTITIES SHALL PREVAIL.
- ALL DISTURBED AREAS SHALL RECEIVE SOD PER EROSION AND SEDIMENT CONTROL PLANS.
- CONTRACTOR TO PRESERVE AND PROTECT EXISTING TREES AND SHRUBS, UNLESS OTHERWISE NOTED. ANY PLANT MATERIAL DAMAGED DUE TO CONTRACTOR NEGLIGENCE SHALL BE REPLACED AT CONTRACTOR'S EXPENSE.



4 PERENNIAL / SHRUB PLANTING
SCALE: N.T.S.



5 TREE PLANTING
SCALE: N.T.S.



TREE GRATE PLANTING NOTES:

- TREE GRATE - NEENAH METROPOLITAN COLLECTION R-8709-A TREE GRATE AND FRAME OR APPROVED (6'X6') EQUAL
- CAST IRON / NATURAL FINISH
- NO OPENINGS GREATER THAN 1/4"
- REFER TO MANUFACTURER'S SPECIFICATIONS FOR INSTALLATION DETAILS
- CONTRACTOR TO USE CONCRETE EMBEDDED "L" FRAME ON ALL SIDES OF GRATE ADJACENT TO CONCRETE. SECURE PER MANUFACTURER RECOMMENDATIONS
- EACH NEW TREE PIT SHALL CONTAIN APPROXIMATELY 10 CY OF STRUCTURAL SOIL (10'x10'x2.5' DEEP)
- TREE PLANTINGS WHERE THE TREE PIT IS OPEN, BLVD. TOPSOIL SHOULD BE PLACED AROUND THE TREE BALL AND ALL OPEN PLANTING AREA. STRUCTURAL SOIL SHOULD BE PLACED UNDER THE BALL TO PREVENT TREE BALL SUBSIDENCE.

6 TYPICAL SECTION: TREE GRATE & STRUCTURAL SOIL

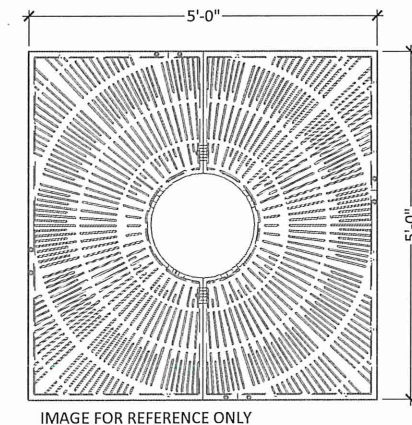


IMAGE FOR REFERENCE ONLY

© Bolton & Menk, Inc. 2023. All Rights Reserved. H:\MARSH\DW1127006\CAD\CED\127006L301.dwg 1/13/2023 12:08:04 PM

REVIEW PLAN



1960 PREMIER DRIVE
MANKATO, MINNESOTA 56001
Phone: (507) 625-4171
Email: Mankato@bolton-menk.com
www.bolton-menk.com



DESIGNED: SJM/CCC
DRAWN: CCC
CHECKED: SJM
CLIENT PROJ. NO.: DW1.127006

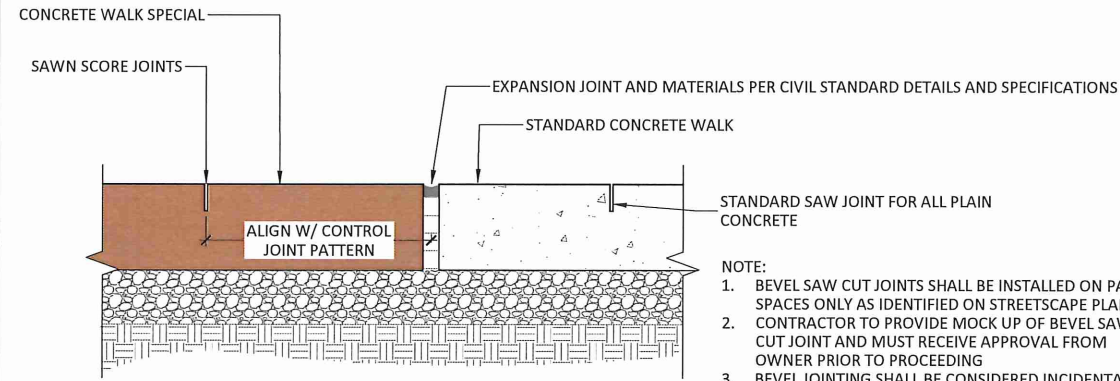
NO.	ISSUED FOR	DATE

CITY OF MARSHALL, MINNESOTA
2023 N 3RD ST - W LYON ST IMPROVEMENTS

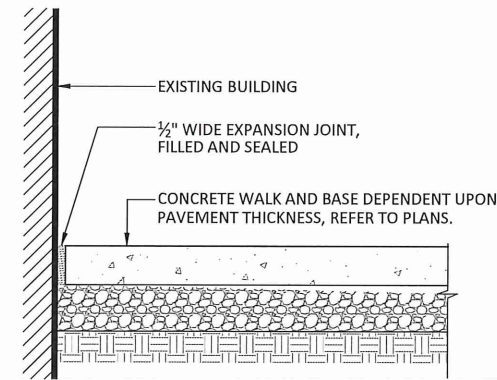
PLANTING DETAILS

SHEET

L3.01



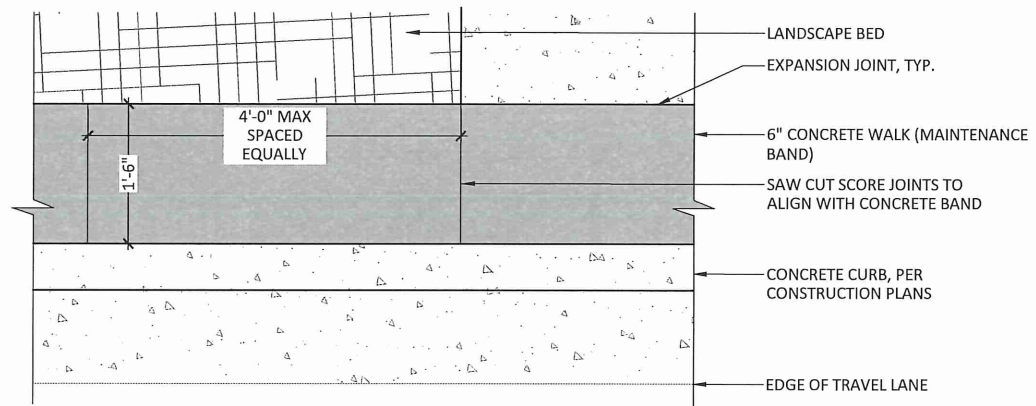
- NOTE:
1. BEVEL SAW CUT JOINTS SHALL BE INSTALLED ON PATIO SPACES ONLY AS IDENTIFIED ON STREETScape PLANS. CONTRACTOR TO PROVIDE MOCK UP OF BEVEL SAW CUT JOINT AND MUST RECEIVE APPROVAL FROM OWNER PRIOR TO PROCEEDING
 2. BEVEL JOINTING SHALL BE CONSIDERED INCIDENTAL TO THE UNIT COST OF CONCRETE WALK SPECIAL.
 3. STANDARD SAWN JOINTS SHALL BE INCIDENTAL TO THE UNIT COST OF CONCRETE TYPE INSTALLED ON.
 4. HAND TOOLED JOINTS WILL NOT BE ACCEPTED



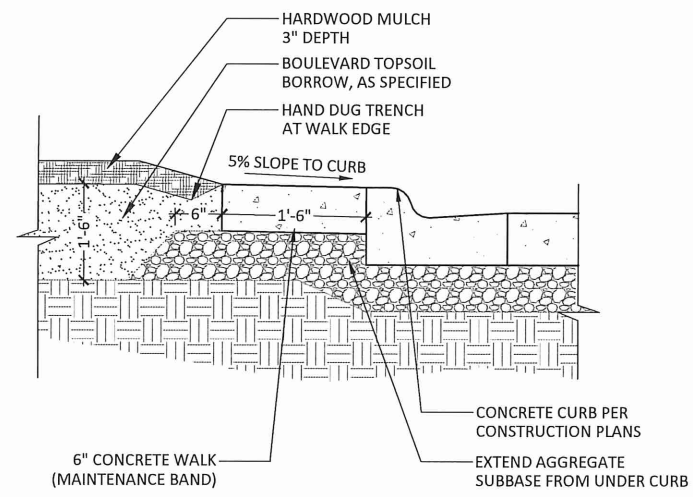
1 TYPICAL SECTION: CONCRETE SIDEWALK JOINTS - BEVELED AND STANDARD

2 CONCRETE SIDEWALK AT BUILDING

SCORING NOTES:
 1. PROVIDE A CONSISTENT PANEL LENGTH, WITH 4'-0" MAX DISTANCE BETWEEN SCORE JOINTS.



3 PLAN ENLARGEMENT: 6" CONCRETE WALK (MAINTENANCE BAND)
 SCALE: N.T.S.



4 TYPICAL SECTION: LANDSCAPE BED
 SCALE: N.T.S.

© Bolton & Menk, Inc. 2023. All Rights Reserved.
 H:\MARKS\0W1.127006\CAD\CED\127006E301.dwg 1/13/2023 12:08:08 PM

REVIEW PLAN



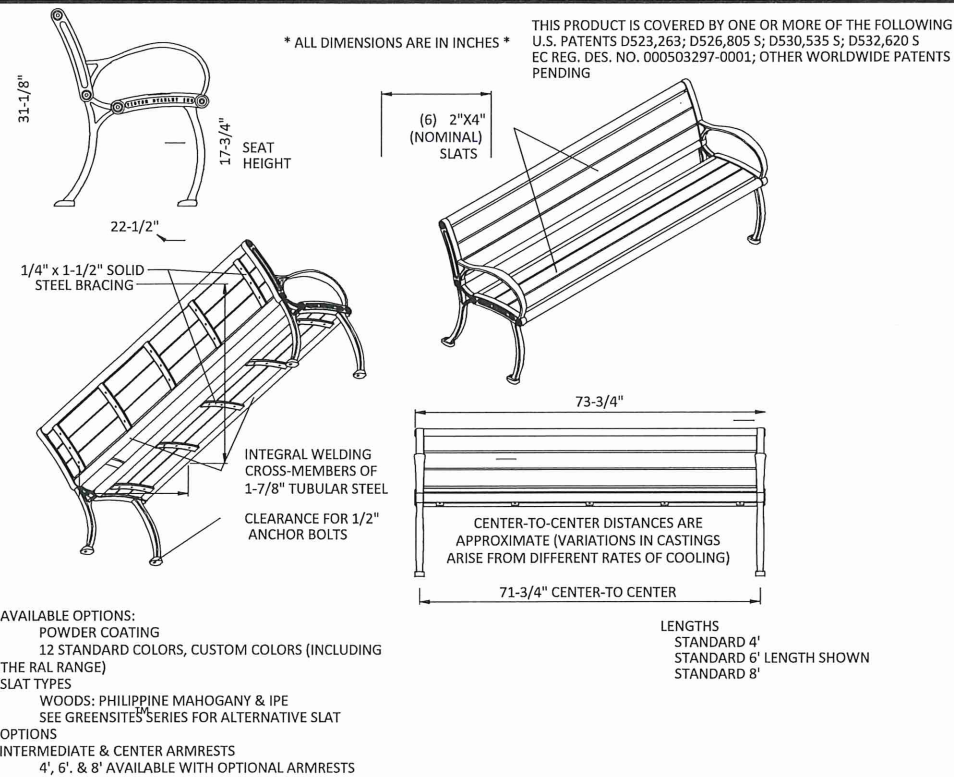
1960 PREMIER DRIVE
 MANKATO, MINNESOTA 56001
 Phone: (507) 625-4171
 Email: Mankato@bolton-menk.com
 www.bolton-menk.com



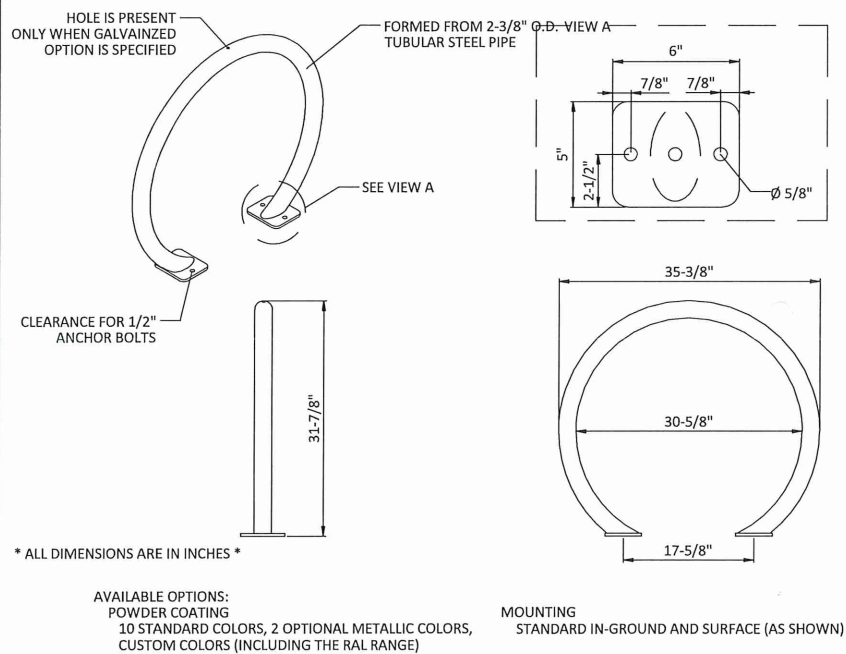
DESIGNED	SJM/CCC	NO.	ISSUED FOR	DATE
DRAWN	CCC			
CHECKED	SJM			
CLIENT PROJ. NO.	0W1.127006			

CITY OF MARSHALL, MINNESOTA
 2023 N 3RD ST - W LYON ST IMPROVEMENTS
 SITE FURNISHING DETAILS

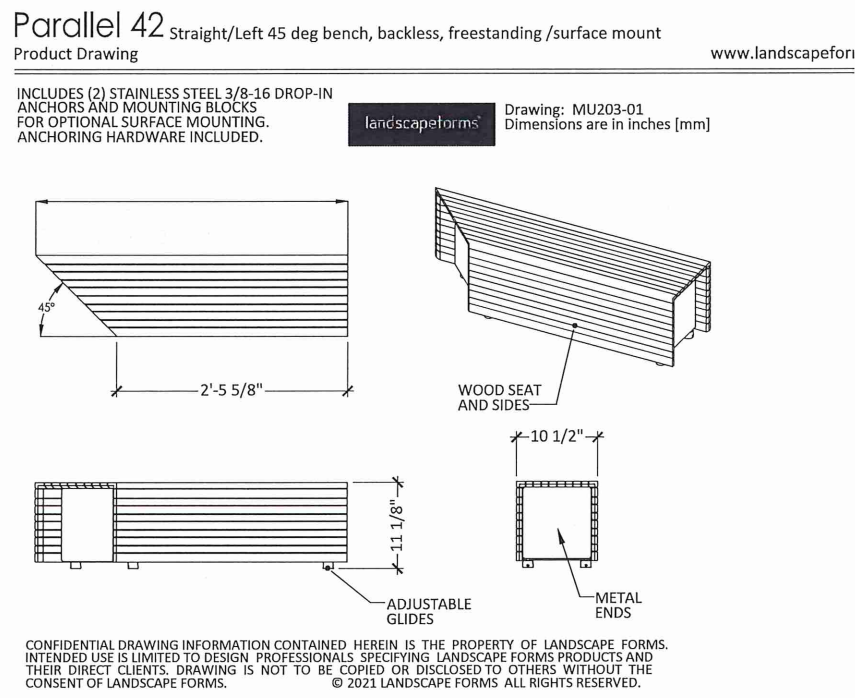
SHEET
 L3.02



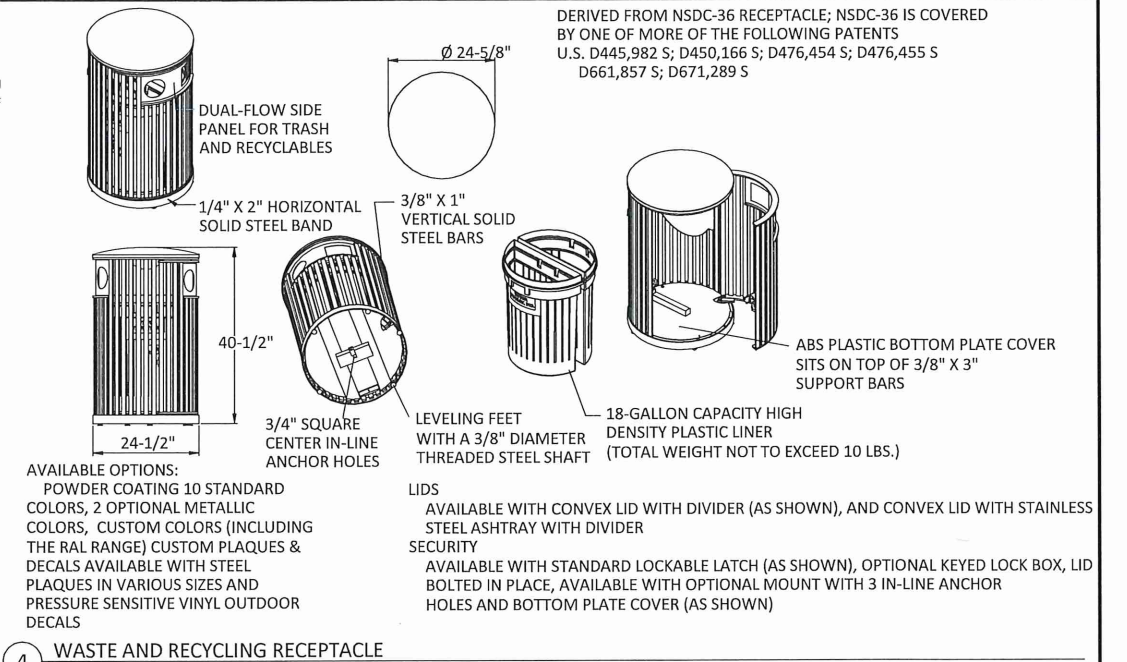
1 BENCH TYPE 1



2 BIKE RACK



3 BENCH TYPE 2



© Bolton & Menk, Inc. 2023. All Rights Reserved. H:\MARKETING\127006\CAD\CAD127006L301.dwg 1/13/2023 12:08:18 PM

REVIEW PLAN



1960 PREMIER DRIVE
MANKATO, MINNESOTA 56001
Phone: (507) 625-4171
Email: Mankato@bolton-menk.com
www.bolton-menk.com



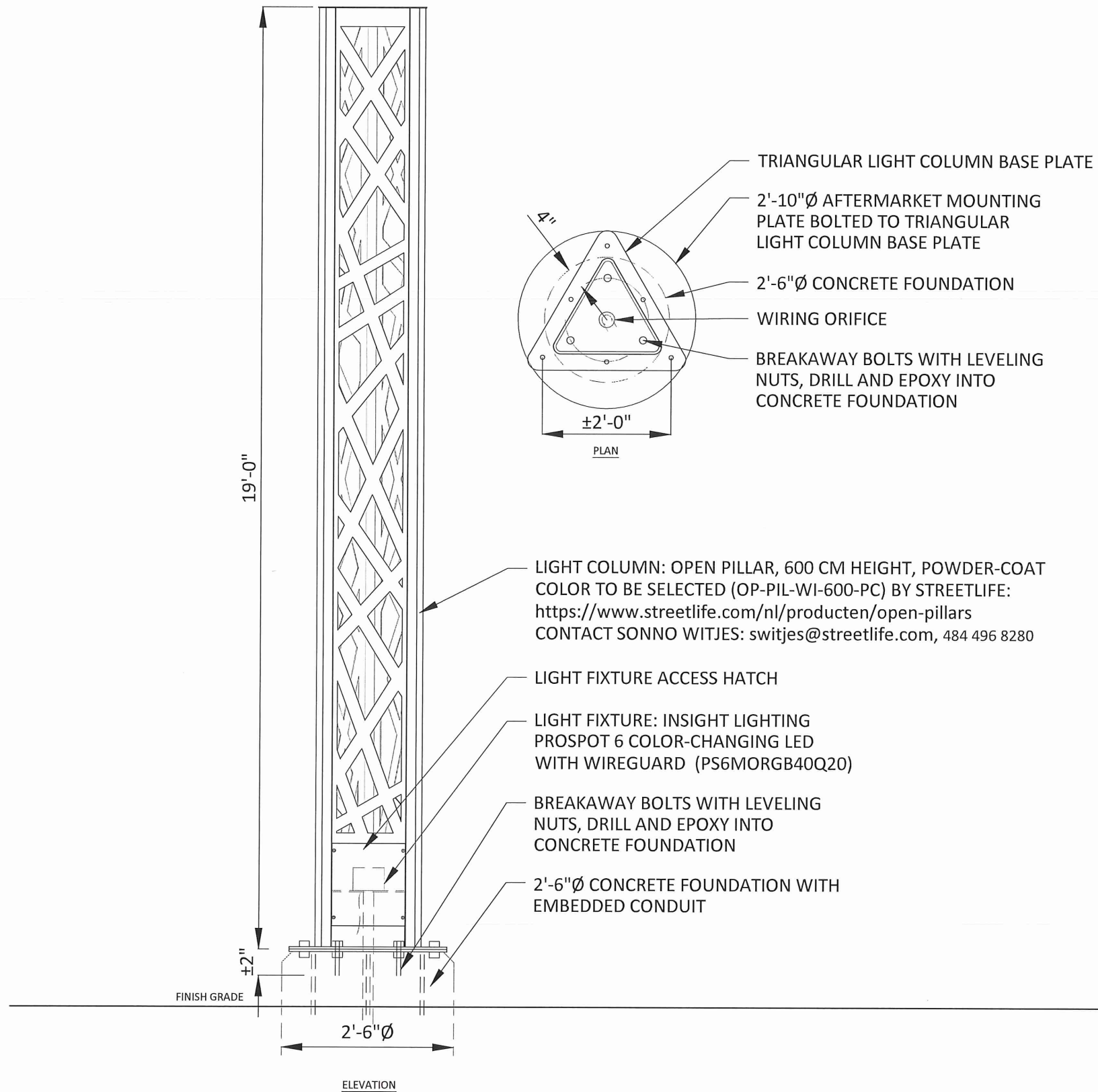
DESIGNED	NO.	ISSUED FOR	DATE
SJM/CCC			
DRAWN			
CCC			
CHECKED			
SJM			
CLIENT PROJ. NO.			
0W1.127006			

CITY OF MARSHALL, MINNESOTA
2023 N 3RD ST - W LYON ST IMPROVEMENTS

SITE FURNISHING DETAILS

SHEET

L3.03



1 GATEWAY MONUMENT COLUMN W/LIGHT
SCALE: NTS

© Bolton & Menk, Inc. 2023. All Rights Reserved. H:\MARSH\DWG\127006\CAD\3D\127006.301.dwg 1/13/2023 12:08:22 PM

REVIEW PLAN



1960 PREMIER DRIVE
MANKATO, MINNESOTA 56001
Phone: (507) 625-4171
Email: Mankato@bolton-menk.com
www.bolton-menk.com



DESIGNED	NO.	ISSUED FOR	DATE
SJM/CCC			
DRAWN			
CCC			
CHECKED			
SJM			
CLIENT PROJ. NO.			
0W1.127006			

CITY OF MARSHALL, MINNESOTA
2023 N 3RD ST - W LYON ST IMPROVEMENTS

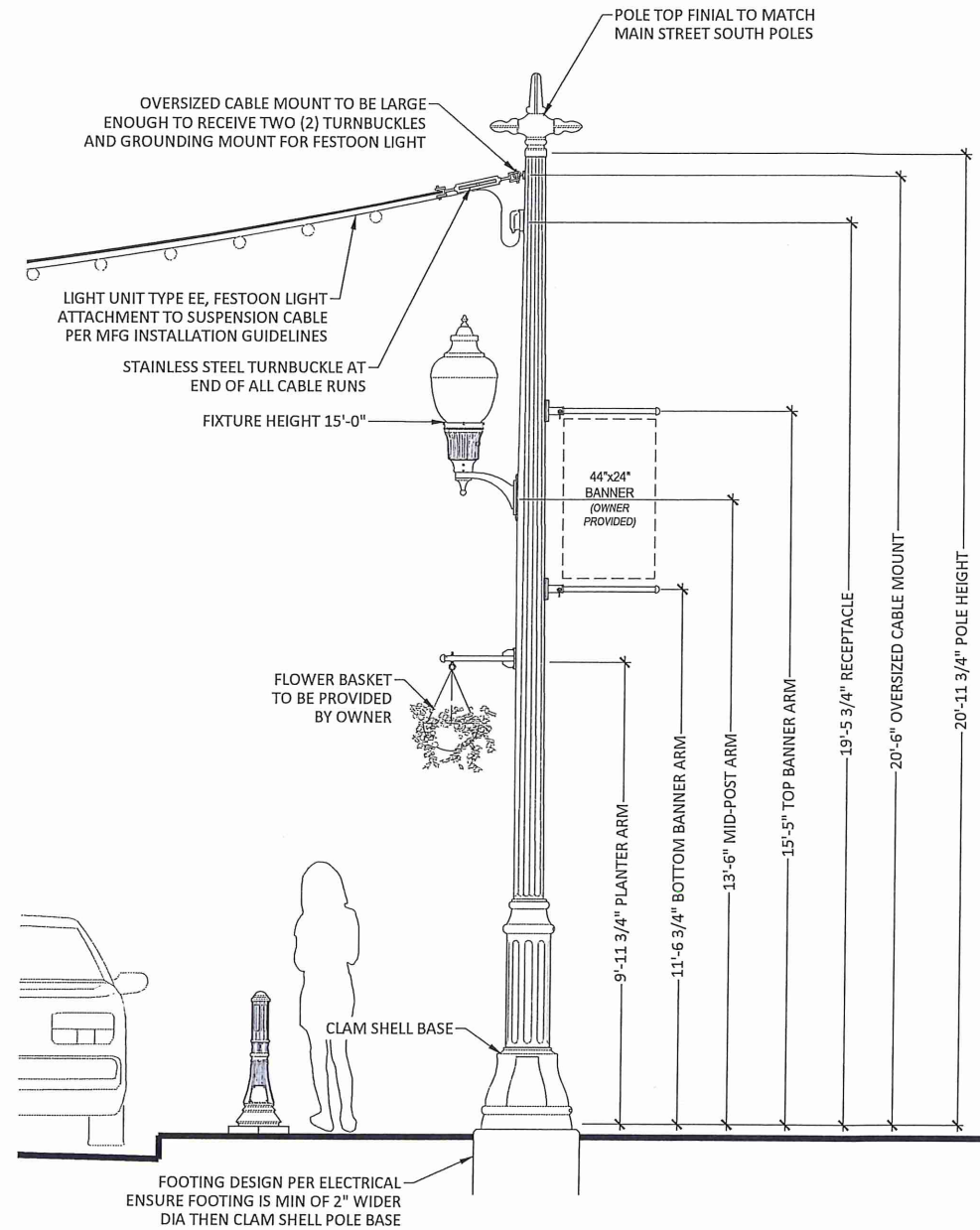
SITE FURNISHING DETAILS

SHEET

L3.04

LIGHT UNIT NOTES:

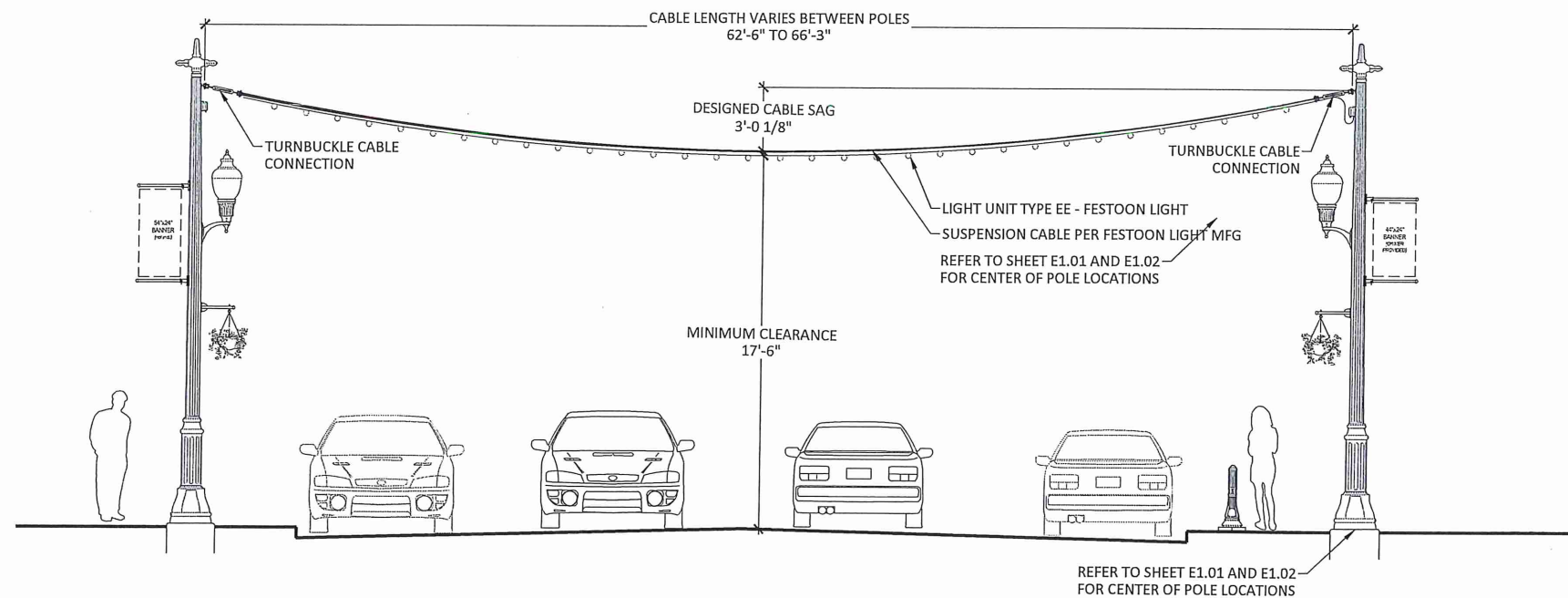
1. STRUCTURAL DESIGN OF POLE IS THE RESPONSIBILITY OF THE POLE MANUFACTURER TO WITHSTAND POLE LOADS AND SUSPENSION CABLE
 - 1.1. SUSPENSION CABLE SAG OF 36" MINIMUM
 - 1.2. SYSTEM IS SIZED TO ONLY SUPPORT ITEMS SPECIFIED ON POLE ASSEMBLY AND FESTOON LIGHTING. NO ADDITIONAL ITEMS TO BE ATTACHED TO POLE OR SUSPENSION CABLE.
2. STRUCTURAL DESIGN OF POLE FOOTING SHALL FOLLOW ELECTRICAL ENGINEER SPECIFICATIONS AND DETAILS.
3. MOUNTING AIRCRAFT CABLE TO BE ML2000-AC-1/8" FROM CALI LIGHTING OR APPROVED EQUAL AS REQUIRED FOR STRUCTURAL INTEGRITY OF SYSTEM. CONTRACTOR TO COORDINATE LOAD REQUIREMENTS WITH POLE MFG DURING FINAL SHOP DRAWING REVIEW.
4. CONTRACTOR TO USE CABLE CRIMPING PER CABLE MANUFACTURER WITH WIRE ROPE THIMBLES AND STAINLESS STEEL CABLE FERRULES TO CREATE LOOPED ENDS OR APPROVED EQUAL. CONTRACTOR RESPONSIBLE TO ENSURE STRUCTURAL INTEGRITY OF CABLE CONNECTIONS.
5. TURNBUCKLES TO BE JAW/JAW TURNBUCKLE - 316 STAINLESS STEEL. SIZED FOR WORKING LOAD LIMITS OF CABLE SYSTEM OR APPROVED EQUAL. NO OPEN CONNECTIONS OR HOOKS WILL BE ACCEPTABLE.
6. POLE EYELET TO BE OVERSIZED TO FIT TWO TURNBUCKLE JAWS AND GROUNDING CONNECTION FOR FESTOON LIGHT. ALL POLES TO ASSUME TWO CABLE TURNBUCKLES TO BE ATTACHED AS LAID OUT PER PLANS. CONTRACTOR SHALL PROVIDE CONNECTION MOCKUP OF TURNBUCKLES AND POLE EYELET TO ENSURE FIT AND FUNCTION. ALTERNATIVE METHODS CAN BE PROPOSED DURING SHOP DRAWING PROCESS.
7. LIGHT UNIT TYPE EE TO BE CALI ML2000 WITH POWER PLUG FOR OUTDOOR WET LOCATION OR APPROVED EQUAL. INSTALLATION PER MFG INSTALLATION INSTRUCTIONS TO AIRCRAFT CABLE.
8. PROVIDE GROUND CONNECTION FOR STRAIN RELIEF CABLE ON FESTOON LIGHT AS REQUIRED BY MANUFACTURER AND SHALL BE CONSIDERED INCIDENTAL TO LIGHT UNIT TYPE EE.
9. INSTALLATION OF SUSPENSION CABLE AND FESTOON LIGHT TO FOLLOW ZIG-ZAG RUN PATTERN NOT EXCEEDING MFG RECOMMENDED LENGTH. CONTRACTOR TO FOLLOW MFG RECOMMENDATION FOR MINIMUM BEND RADIUS AND CABLE LOCKING TO PREVENT DAMAGE TO STRING LIGHT SYSTEM.
10. MEASUREMENT FOR PAYMENT SHALL BE FROM POLE CONNECTION POINT TO POLE CONNECTION POINT. ALL HARDWARE, LOOPS, TIE BACKS, TURNBUCKLES, AND OTHER HARDWARE REQUIRED TO COMPLETE CABLE INSTALLATION SHALL BE CONSIDERED INCIDENTAL TO CABLE UNIT PRICE.



NOTES:

1. REFER TO ELECTRICAL SHEETS AND SPECIFICATIONS FOR PRODUCT MODEL NUMBERS
2. FINAL HEIGHT AND ORIENTATION FOR ALL POLE ACCESSORIES TO BE DEFINED DURING SHOP DRAWING PROCESS PRIOR TO PRODUCTION.
3. REFER TO MFG AND ELECTRICAL PLANS/SPECS FOR ANCHOR BOLTS AND FOOTING DESIGN
4. B3 AND B5 LIGHT UNITS SHALL INCLUDE ALL ASSEMBLY ITEMS IDENTIFIED AND SHALL BE INCIDENTAL TO UNIT PRICE.

3 LED BOLLARD
SCALE: NTS



1 LIGHT UNIT TYPE B WITH SUSPENSION CABLE LAYOUT

1

2

3

© Bolton & Menk, Inc. 2023. All Rights Reserved. P:\MARSH\01\127006\CAD\DWG\127006.DWG, 1/13/2023 12:10:06 PM

I HEREBY CERTIFY THAT THIS PLAN, SPECIFICATION, OR REPORT WAS PREPARED BY ME OR UNDER MY DIRECT SUPERVISION AND THAT I AM A DULY LICENSED LANDSCAPE ARCHITECT UNDER THE LAWS OF THE STATE OF MINNESOTA.

REVIEW PLAN

SAMUEL J. KESSEL
LIC. NO. 50677 DATE XX/XX/2023



1960 PREMIER DRIVE
MANKATO, MINNESOTA 56001
Phone: (507) 625-4171
Email: Mankato@bolton-menk.com
www.bolton-menk.com



DESIGNED	NO.	ISSUED FOR	DATE
SJM/CCC			
DRAWN	CCC		
CHECKED	SJM		
CLIENT PROJ. NO.	0W1.127006		

CITY OF MARSHALL, MINNESOTA
2023 N 3RD ST - W LYON ST IMPROVEMENTS

ELECTRICAL DETAILS

SHEET

E2.01