

CITY OF MARSHALL

CONSTRUCTION PLANS FOR

LEGION FIELD ROAD STORMWATER IMPROVEMENTS PHASE II

POND GRADING, BITUMINOUS TRAIL, STORM SEWER

DECEMBER 2022

RESOURCE LIST

CITY OF MARSHALL
CITY HALL
344 W MAIN ST
MARSHALL, MN 56258
507-537-6760

CITY ADMINISTRATOR:
SHARON HANSON

DIRECTOR OF PUBLIC WORKS/CITY ENGINEER
JASON ANDERSON
507-537-6051

WASTEWATER SUPERINTENDENT
SCOTT TRUEDSON

WATER OPERATIONS MANAGER
JEFF LARSON

ELECTRICAL OPERATIONS MANAGER
TONY MEAD

PUBLIC WORKS SUPERINTENDENT:
DEAN COUDRON



SHEET NUMBER	SHEET TITLE
1	TITLE SHEET
2 - 3	LEGEND, GENERAL NOTES & STATEMENT OF ESTIMATED QUANTITIES
4-11	CONSTRUCTION DETAILS
12	EXISTING CONDITIONS & REMOVALS PLAN
13	GRADING PLAN
14	PROPOSED TRAIL PLAN & PROFILE
15	STORM SEWER PLAN & PROFILE
16 - 17	STORMWATER POLLUTION PREVENTION PLAN
18	TEMPORARY EROSION CONTROL & TURF ESTABLISHMENT PLAN
19 - 20	DITCH CROSS-SECTIONS

THIS PLAN SET CONTAINS 20 SHEETS.

SPECIFICATION REFERENCE

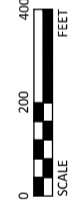
THE 2020 EDITION OF THE MINNESOTA DEPARTMENT OF TRANSPORTATION "STANDARD SPECIFICATIONS FOR CONSTRUCTION" AND THE "SUPPLEMENTAL SPECIFICATIONS" DATED SEPTEMBER 2022 SHALL GOVERN.

ALL TRAFFIC CONTROL DEVICES SHALL CONFORM TO THE LATEST EDITION OF THE MINNESOTA MANUAL ON UNIFORM TRAFFIC CONTROL DEVICES, INCLUDING THE LATEST FIELD MANUAL FOR TEMPORARY TRAFFIC CONTROL ZONE LAYOUTS.

THE CITY OF MARSHALL STANDARD SPECIFICATIONS AND SPECIAL PROVISIONS.

THE SUBSURFACE UTILITY INFORMATION IN THIS PLAN IS UTILITY QUALITY LEVEL D UNLESS OTHERWISE NOTED. THIS UTILITY LEVEL WAS DETERMINED ACCORDING TO THE GUIDELINES OF C/ASCE 38-02, ENTITLED "STANDARD GUIDELINES FOR THE COLLECTION AND DEPICTION OF EXISTING SUBSURFACE UTILITY DATA."

MAP LEGEND
PROJECT LIMITS



MAP OF THE
CITY OF MARSHALL
LYON COUNTY, MN



ENGINEERING DEPARTMENT
344 WEST MAIN STREET
MARSHALL, MINNESOTA
56258

UNLESS OTHERWISE NOTED, ALL SPECIFICATIONS, SURVEY DATA, AND FIELD NOTES SHALL BE UNDER MY DIRECT SUPERVISION AND THAT I AM A DULY LICENSED PROFESSIONAL ENGINEER IN THE STATE OF MINNESOTA.

JOSHUA G. STIER
LIC. NO. 54171 DATE 12/05/2022



1960 PREMIER DRIVE
MANKATO, MINNESOTA 56001
Phone: (507) 625-4171
Email: Mankato@bolton-menk.com
www.bolton-menk.com

REVISION	NO.	REASON FOR	DATE
DRAWN	MDS		
CHECKED	CMM		
CLIENT PROJ. NO.	JGS		
	OW1126277		

REVIEWED & APPROVED

CITY ENGINEER

DATE:

PROJECT DATUM: LYON COUNTY
HORIZONTAL: NAD 83
VERTICAL: NAVD 88

RECORD DRAWING INFORMATION

OBSERVER:

CONTINUATOR:

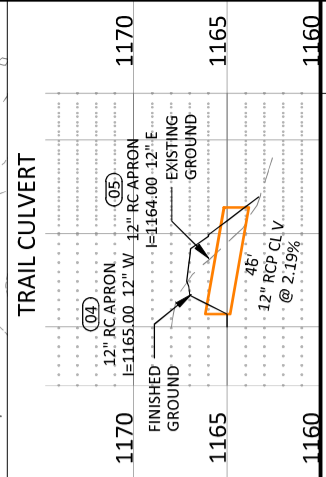
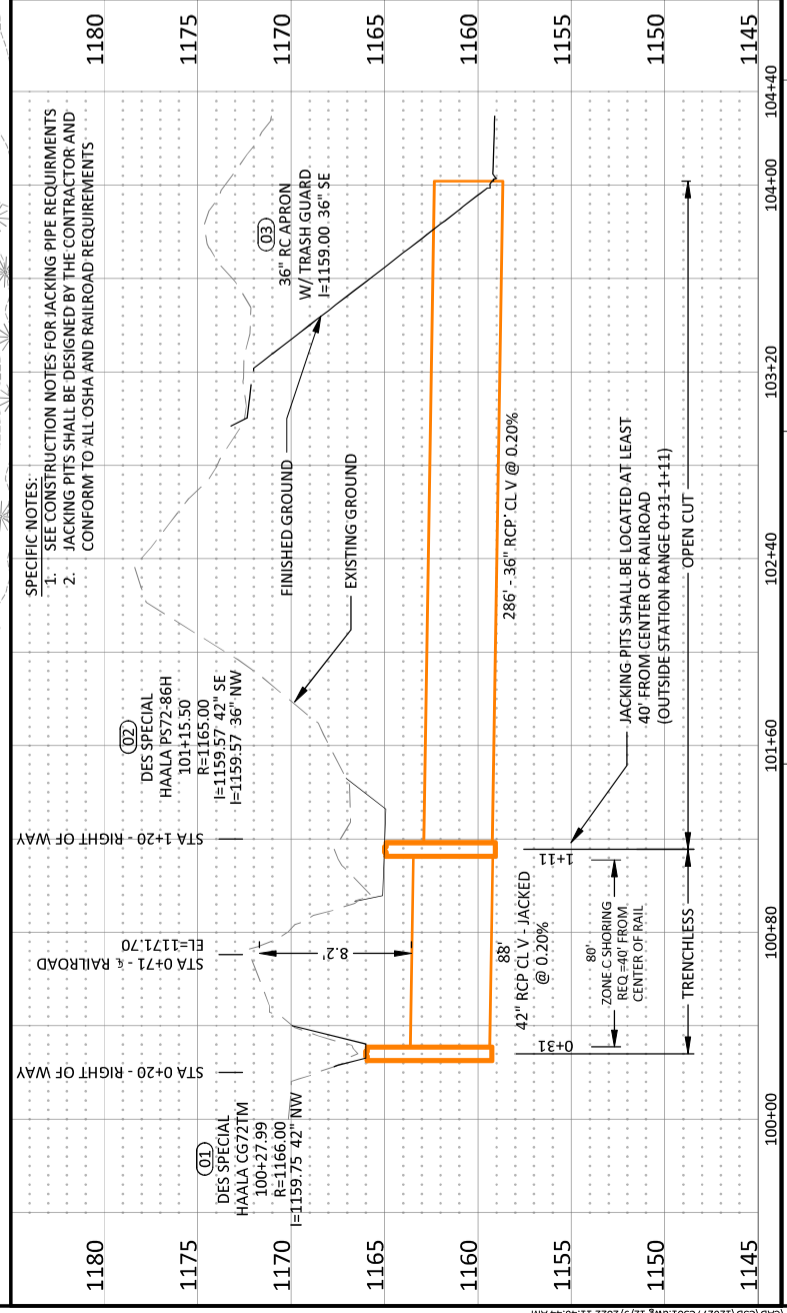
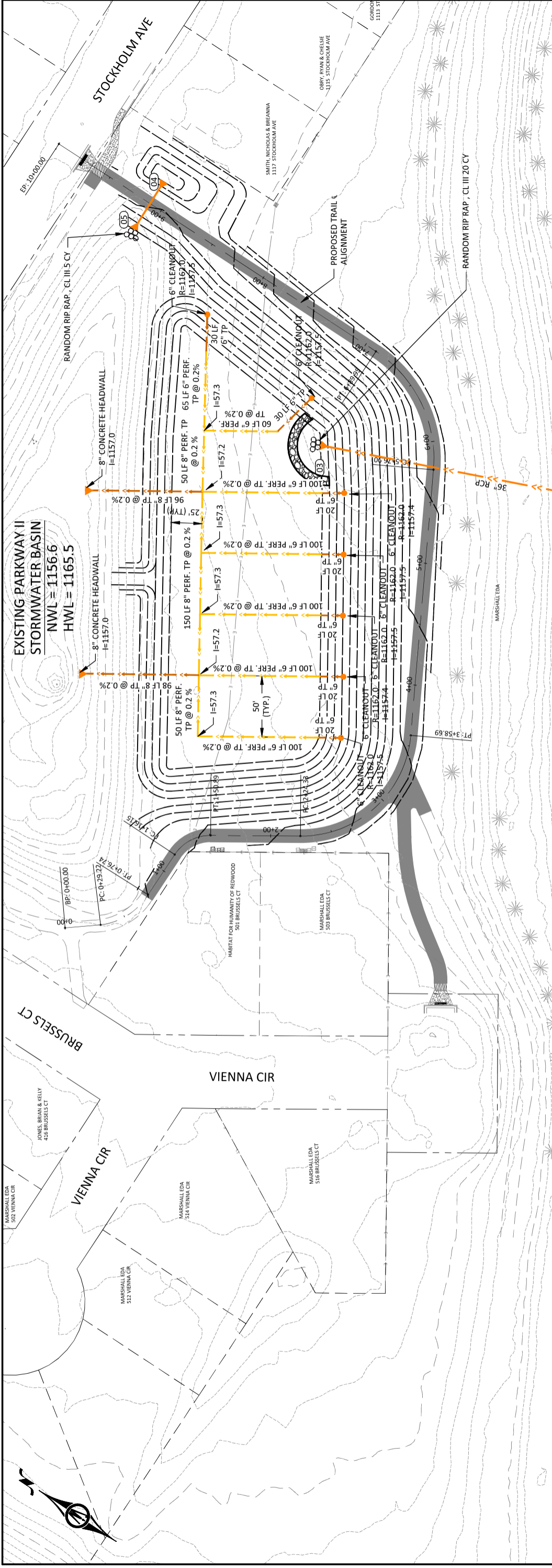
CITY OF MARSHALL, MINNESOTA

LEGION FIELD ROAD STORMWATER IMPROVEMENTS PHASE II

TITLE SHEET

SHEET

1



STORM SEWER PLAN & PROFILE

CITY OF MARSHALL, MINNESOTA
LEGION FIELD ROAD STORMWATER IMPROVEMENTS PHASE II

DATE: 12/05/2022
PROJECT NO.: 54171
SHEET NO.: 15

PREPARED BY: MDS
DRAWN BY: CMM
CHECKED BY: JGS
CLIENT PROJ. NO.: OW1126277

1960 PREMIER DRIVE
MANKATO, MINNESOTA 56001
Phone: (507) 625-4171
Email: Mankato@bolton-menk.com
www.bolton-menk.com

BOLTON & MENK

ENGINEERING DEPARTMENT
344 WEST MAIN STREET
MARSHALL, MINNESOTA 56208

© Bolton & Menk, Inc. 2022. All Rights Reserved. H:\MANS\OW1126277\CD\126277\CS01.dwg 12/5/2022 11:46:44 AM