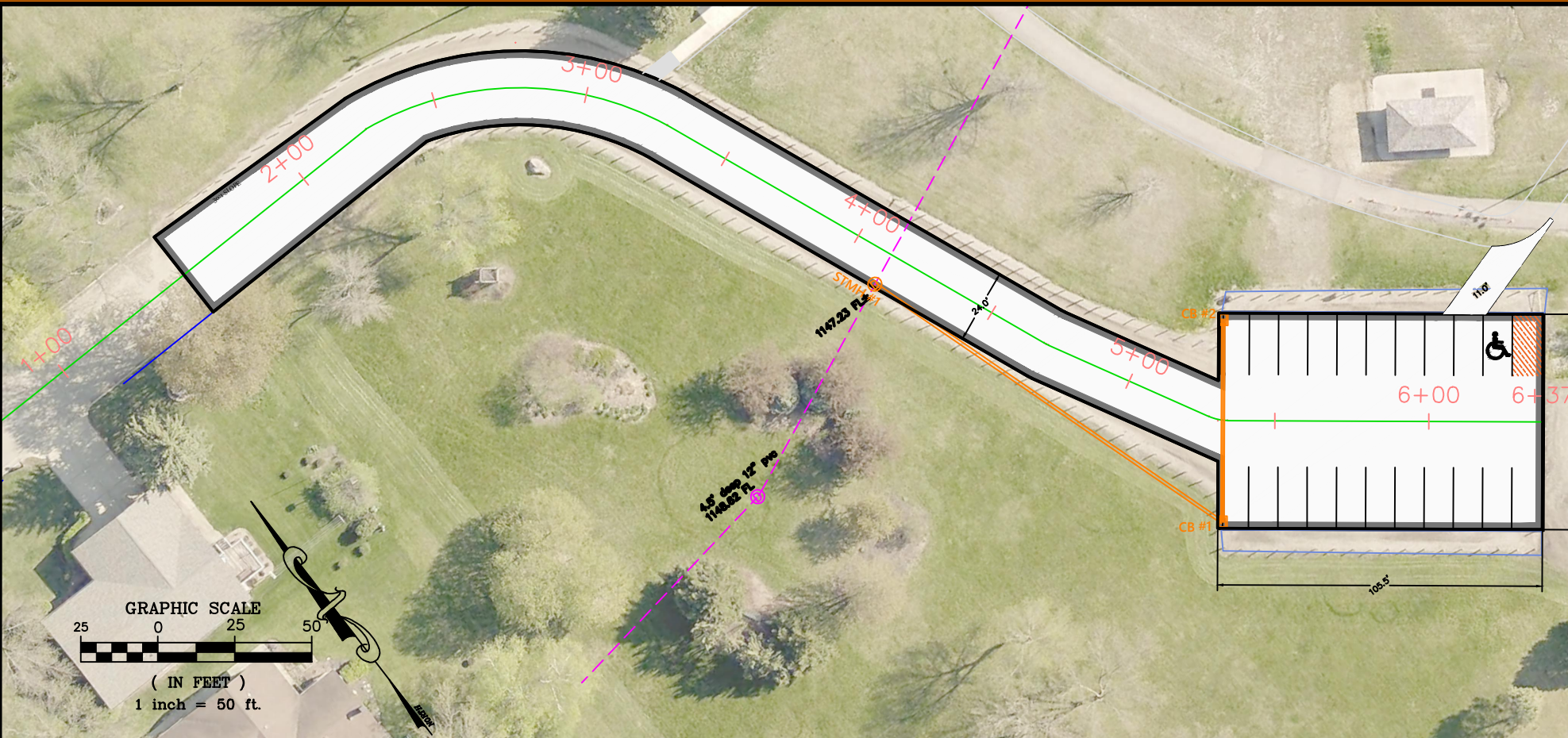




Alternate #1 Full Subcut, 12" Gravel, 5" Concrete Entrance Road, Concrete Lot						
Line No.	Item No.	Description	Units	Quantity	Unit Price	Total Price
1	2021.501	MOBILIZATION	L S	1	\$10,000.00	\$10,000.00
2	2104.501	REMOVE CURB & GUTTER	L F	20	\$5.00	\$100.00
3	2105.501	COMMON EXCAVATION (P)	C Y	930	\$15.00	\$13,950.00
4	2104.502	REMOVE POST	EACH	175	\$6.00	\$1,050.00
5	2108.504	GEOTEXTILE FABRIC TYPE 7	S Y	1,950	\$6.00	\$11,700.00
6	2211.503	AGGREGATE BASE (CV) CLASS 5 (P)	C Y	650	\$35.00	\$22,750.00
8	2502.503	4" PVC PIPE DRAIN	L F	490	\$20.00	\$9,800.00
12	2521.518	4" CONCRETE WALK	S F	50	\$7.00	\$350.00
14	2531.507	5" CONCRETE PARKING LOT PAVEMENT	SY	1885	\$55.50	\$104,617.50
15	2531.507	6" CONCRETE DRIVEWAY PAVEMENT	S Y	37	\$80.00	\$2,960.00
16	2531.618	TRUNCATED DOMES	S F	9	\$75.00	\$675.00
17	2563.601	TRAFFIC CONTROL	L S	1	\$2,000.00	\$2,000.00
18	2573.501	STABILIZED CONSTRUCTION EXT	L S	1	\$1,500.00	\$1,500.00
19	2573.502	STORM DRAIN INLET PROTECTION	EACH	1	\$150.00	\$150.00
20	2574.507	BOULEVARD TOPSOIL BORROW (LV)	C Y	200	\$38.00	\$7,600.00
21	2575.601	TURF ESTABLISHMENT	L S	1	\$2,000.00	\$2,000.00
					Construction	\$191,202.50
					Contingency 10%	\$19,120.25
					Engineering 16%	\$30,592.40
					Contract Total	\$240,915.15



Alternate #2 Full Subcut, 12" Gravel, 5" Curb & Gutter Concrete Entrance Road, Concrete Lot						
Line No.	Item No.	Description	Units	Quantity	Unit Price	Total Price
1	2021.501	MOBILIZATION	L S	1	\$10,000.00	\$10,000.00
2	2104.501	REMOVE CURB & GUTTER	L F	20	\$5.00	\$100.00
3	2105.501	COMMON EXCAVATION (P)	C Y	930	\$15.00	\$13,950.00
4	2104.502	REMOVE POST	EACH	175	\$6.00	\$1,050.00
5	2108.504	GEOTEXTILE FABRIC TYPE 7	S Y	1,950	\$6.00	\$11,700.00
6	2211.503	AGGREGATE BASE (CV) CLASS 5 (P)	C Y	650	\$35.00	\$22,750.00
8	2502.503	4" PVC PIPE DRAIN	L F	285	\$20.00	\$5,700.00
9	2503.603	12" STORM SEWER	LF	203	\$72.00	\$14,616.00
10	2506.502	CONST. DRAINAGE STRUCTURE, DESIGN A	EACH	2	\$3,400.00	\$6,800.00
11	2506.503	CONST. DRAINAGE STRUCTURE, DESIGN 48-4020	LF	7	\$1,050.00	\$7,350.00
12	2521.518	4" CONCRETE WALK	S F	50	\$7.00	\$350.00
13	2531.501	CONCRETE CURB & GUTTER DESIGN B618	L F	1,120	\$22.00	\$24,640.00
14	2531.507	5" CONCRETE PARKING LOT PAVEMENT	SY	1620	\$55.50	\$89,910.00
15	2531.507	6" CONCRETE DRIVEWAY PAVEMENT	S Y	37	\$80.00	\$2,960.00
16	2531.618	TRUNCATED DOMES	S F	9	\$75.00	\$675.00
17	2563.601	TRAFFIC CONTROL	L S	1	\$2,000.00	\$2,000.00
18	2573.501	STABILIZED CONSTRUCTION EXT	L S	1	\$1,500.00	\$1,500.00
19	2573.502	STORM DRAIN INLET PROTECTION	EACH	3	\$150.00	\$450.00
20	2574.507	BOULEVARD TOPSOIL BORROW (LV)	C Y	200	\$38.00	\$7,600.00
21	2575.601	TURF ESTABLISHMENT	L S	1	\$2,000.00	\$2,000.00
					Construction	\$226,101.00
					Contingency 10%	\$22,610.10
					Engineering 16%	\$36,176.16
					Contract Total	\$284,887.26

DESIGNED BY: G.J.S.	DATE	REVISIONS	INIT.
DRAWN BY: G.J.S.			
APPROVED BY: J.R.A.			
SCALE: 1"=50'			


MARSHALL
 ENGINEERING DEPARTMENT
 344 WEST MAIN STREET
 MARSHALL, MINNESOTA
 56258

INDEPENDENCE PARKING LOT

 REVISED ALTERNATES #1 & #2

I HEREBY CERTIFY THAT THIS PLAN, SPECIFICATION OR REPORT WAS PREPARED BY ME OR UNDER MY DIRECT SUPERVISION AND THAT I AM A DULY LICENSED ENGINEER UNDER THE LAWS OF THE STATE OF MINNESOTA.
 DATE _____ LICENSE NO. 53322

CITY PROJECT NO. PK-015	DATE 02/29/2024
STATE AID PROJECT NO. NA	SHEET NO. 1 OF 1