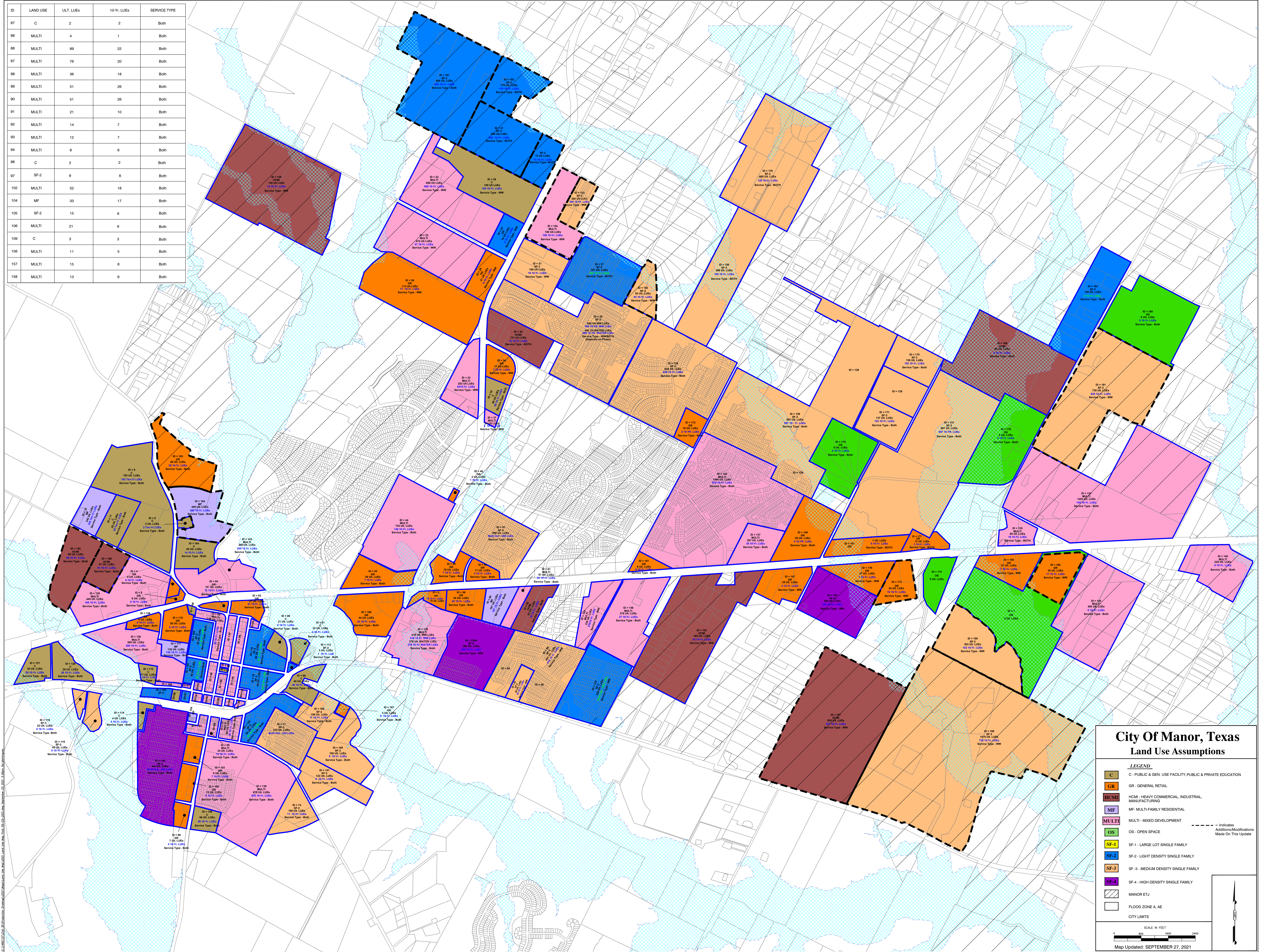


ID	LAND USE	ULT. LUEs	10-Yr. LUEs	SERVICE TYPE
67	C	2	2	Both
68	MULTI	4	1	Both
86	MULTI	80	22	Both
87	MULTI	70	20	Both
88	MULTI	36	18	Both
89	MULTI	51	26	Both
90	MULTI	51	26	Both
91	MULTI	21	10	Both
92	MULTI	14	7	Both
93	MULTI	12	7	Both
94	MULTI	8	6	Both
96	C	2	2	Both
97	SF-2	8	6	Both
102	MULTI	52	18	Both
104	MF	33	17	Both
105	SF-2	15	6	Both
106	MULTI	21	9	Both
109	C	3	3	Both
156	MULTI	11	5	Both
157	MULTI	15	8	Both
158	MULTI	13	6	Both



### City of Manor, Texas Land Use Assumptions

**LEGEND**

- C** - PUBLIC & GEN. USE FACILITY, PUBLIC & PRIVATE EDUCATION
- GR** - GENERAL RETAIL
- HCM** - HEAVY COMMERCIAL, INDUSTRIAL, MANUFACTURING
- MF** - MULTI-FAMILY RESIDENTIAL
- MULTI** - MULTI - MIXED DEVELOPMENT
- OS** - OPEN SPACE
- SF-1** - LARGE LOT SINGLE FAMILY
- SF-2** - LIGHT DENSITY SINGLE FAMILY
- SF-3** - MEDIUM DENSITY SINGLE FAMILY
- SF-4** - HIGH DENSITY SINGLE FAMILY
- MANOR ETJ** - MANOR ETJ
- FLOOD ZONE A, AE** - FLOOD ZONE A, AE
- CITY LIMITS** - CITY LIMITS

--- Indicates Additions/Modifications Made On This Update

SCALE IN FEET  
0 800 1600 2400

Map Updated: SEPTEMBER 27, 2021