

Pavement Inventory and Management Report

Update for Fiscal Year 2022
Manor, Texas

GBA



Project Summary

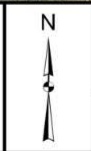
The annual video collection for pavement condition ratings were performed in December 2022.

Recommendations:

- 15 Street segments for Mill & Overlay
- 14 Street segments for Reconstruction
- Recommendations for each street segment are not linear from 2021 report recommendations.
- Recommendations for FY 2023 do not include streets or segments the City has set aside for future separate projects.

Fiscal Year 2023 Budget

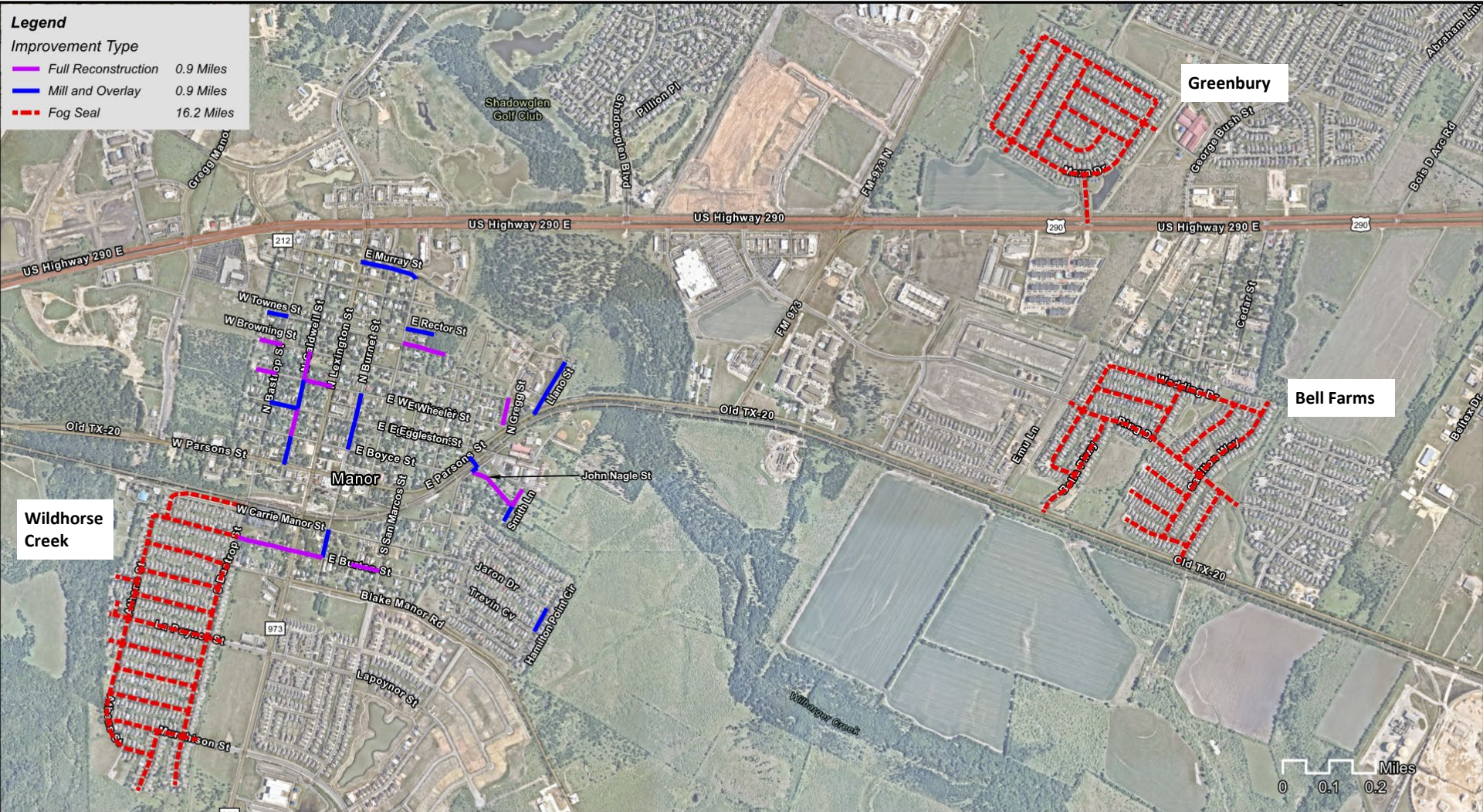
- \$2,300,000 (combined City & Cap Metro)



Pavement Inventory and Management Report
FY 2022 Update
May 2023

Exhibit 3
Street Rating (PCI) Map
Map depicting the PCI ratings to the streets that were part of the FY 22 assessment

City of Manor
Travis County, Texas



Legend

Improvement Type

Full Reconstruction	0.9 Miles
Mill and Overlay	0.9 Miles
Fog Seal	16.2 Miles



Pavement Inventory and Management Report
FY 2022 Update

May 2023

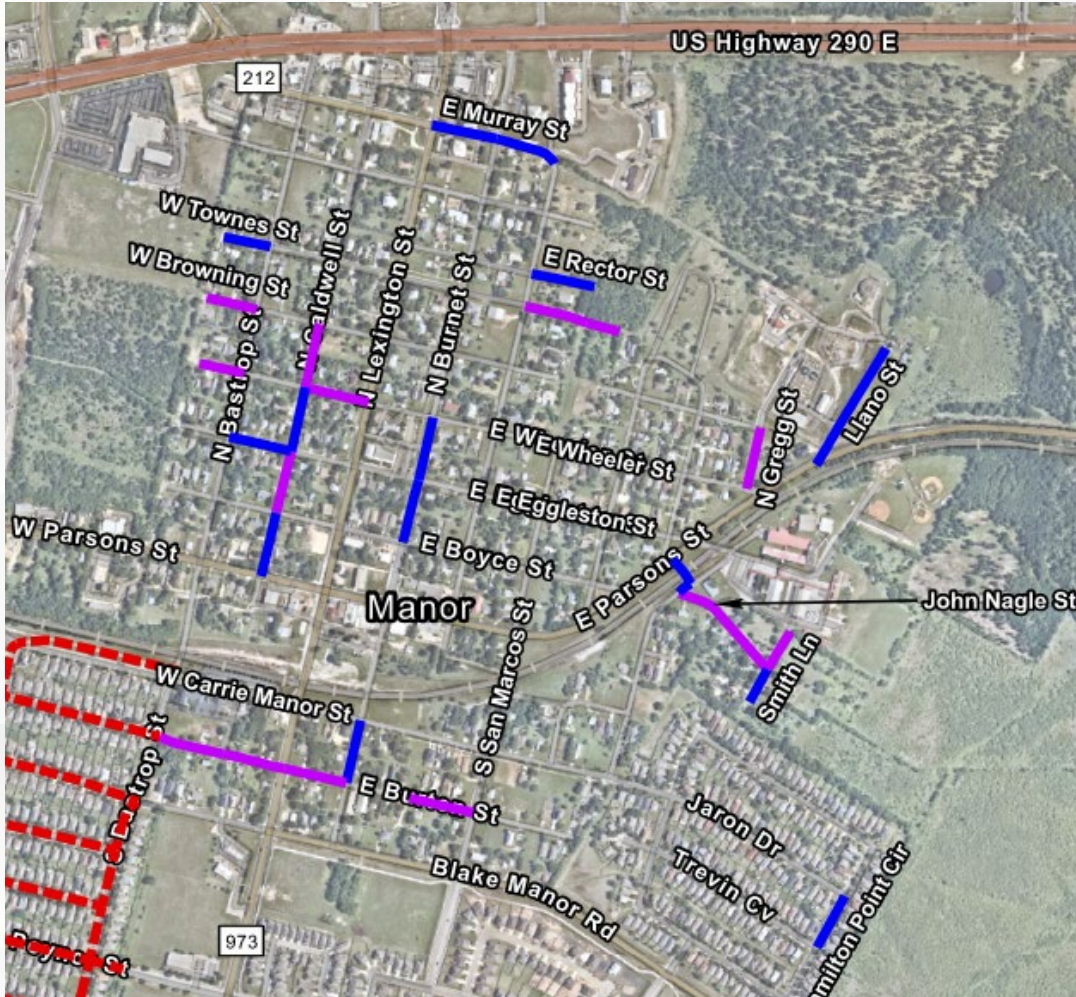
Exhibit 5
Street Improvements Map (FY 23)

Map of recommended streets to be improved in
Fiscal Year 23

City of Manor
Travis County, Texas

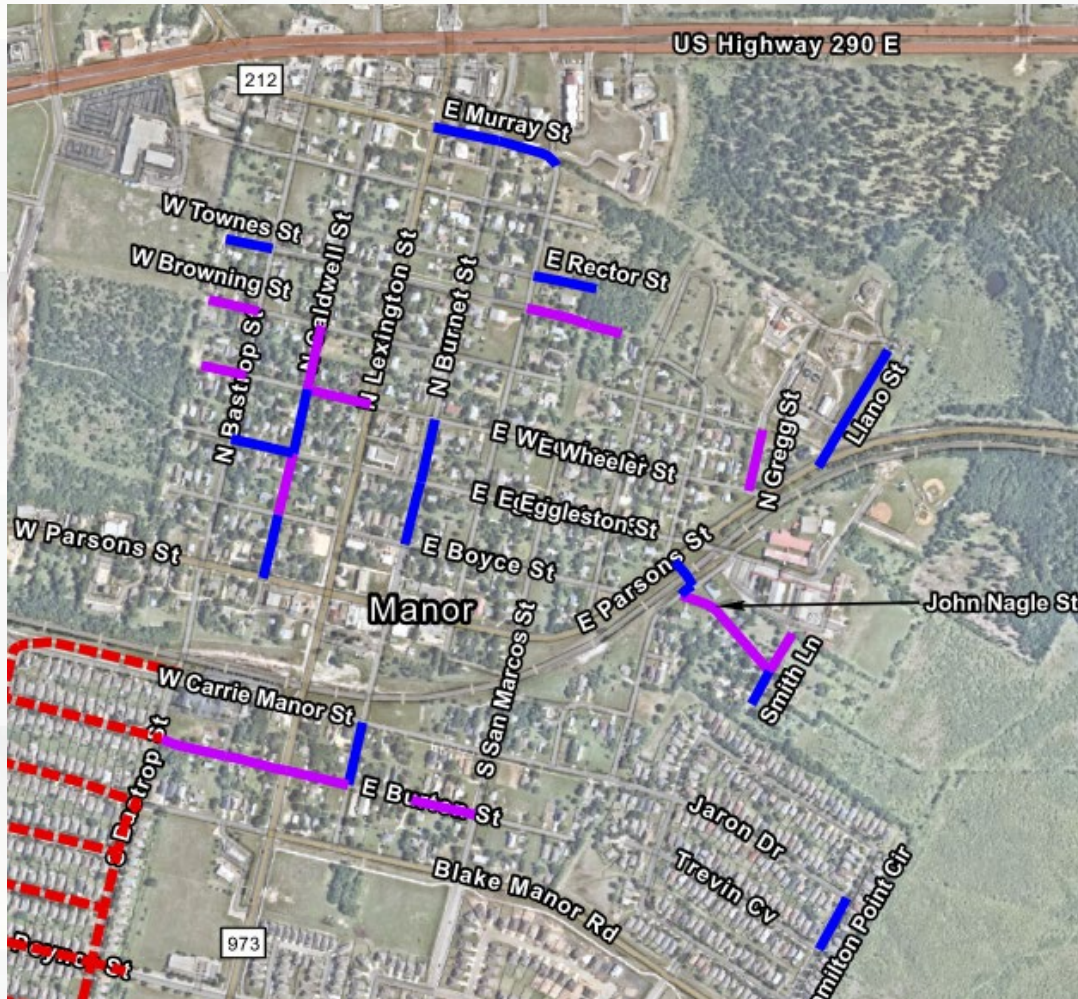


Mill and Overlay Projects (FY 23)



	Roadway	From	To	Length (FT)	2022 PCI Rating
1	CALDWELL	E Wheeler	E Eggleston	333	51.3
2	CALDWELL	E Boyce	E Parsons	334	71.9
3	HAMILTON POINT	Jaron	Trevin Cove	299	52.4
4	RECTOR	N La Grange	Dead End	330	52.9
5	BURNET	E Carrie Manor	E Burton	328	55.5
6	BURNET	E Wheeler	E Eggleston	331	59.2
7	BURNET	E Eggleston	E Boyce	328	60.8
8	MURRAY	N Burnet	N La Grange	329	56.9
9	MURRAY	N Lexington/FM 973	N Burnet	341	59.1
10	LLANO	E Parson	Dead End	696	57.1
11	J F NAGLE	E Parson	S Lampasas	158	58.2
12	J F NAGLE	S Lampasas	Smith	78	69.5
13	EGGLESTON	N Bastrop	N Caldwell	327	59.1
14	SMITH	Dead End	J F Nagle	191	61
15	TOWNES	Dead End	N Bastrop	245	71.8

Full Reconstruction Projects (FY 23)



	Roadway	From	To	Length (FT)	2022 PCI Rating
1	WHEELER	Dead End	N Bastrop	233	24.7
2	WHEELER	N Caldwell	N Lexington/FM 973	332	37.8
3	CALDWELL	W Boyce	E Eggleston	325	42.4
4	CALDWELL	E Wheeler	E Browning	333	44.6
5	J F NAGLE	S Lampasas	Smith	613	51
6	BROWNING	Dead end	N Bastrop	265	52.2
7	GREGG**	E Wheeler	E Browning	321	54
8	SMITH	John Nagle	High School	226	53.7
9	BURTON	S Caldwell	Lexington/FM 973	318	43
10	BURTON	S Bastrop	S Caldwell	338	47.3
11	BURTON	S LaGrange	S San Marcos	334	55.3
12	BURTON	Lexington	S Burnet	328	65.9
13	TOWNES	N La Grange	Mid-block	327	49.1
14	TOWNES	Mid-block	Dead End	175	49.1

GBA

Creating
remarkable
solutions