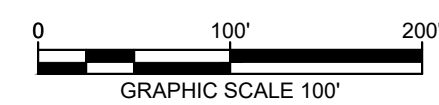
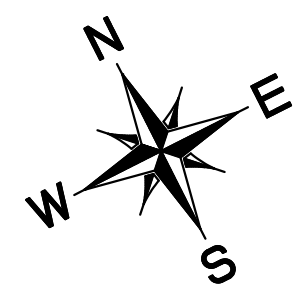
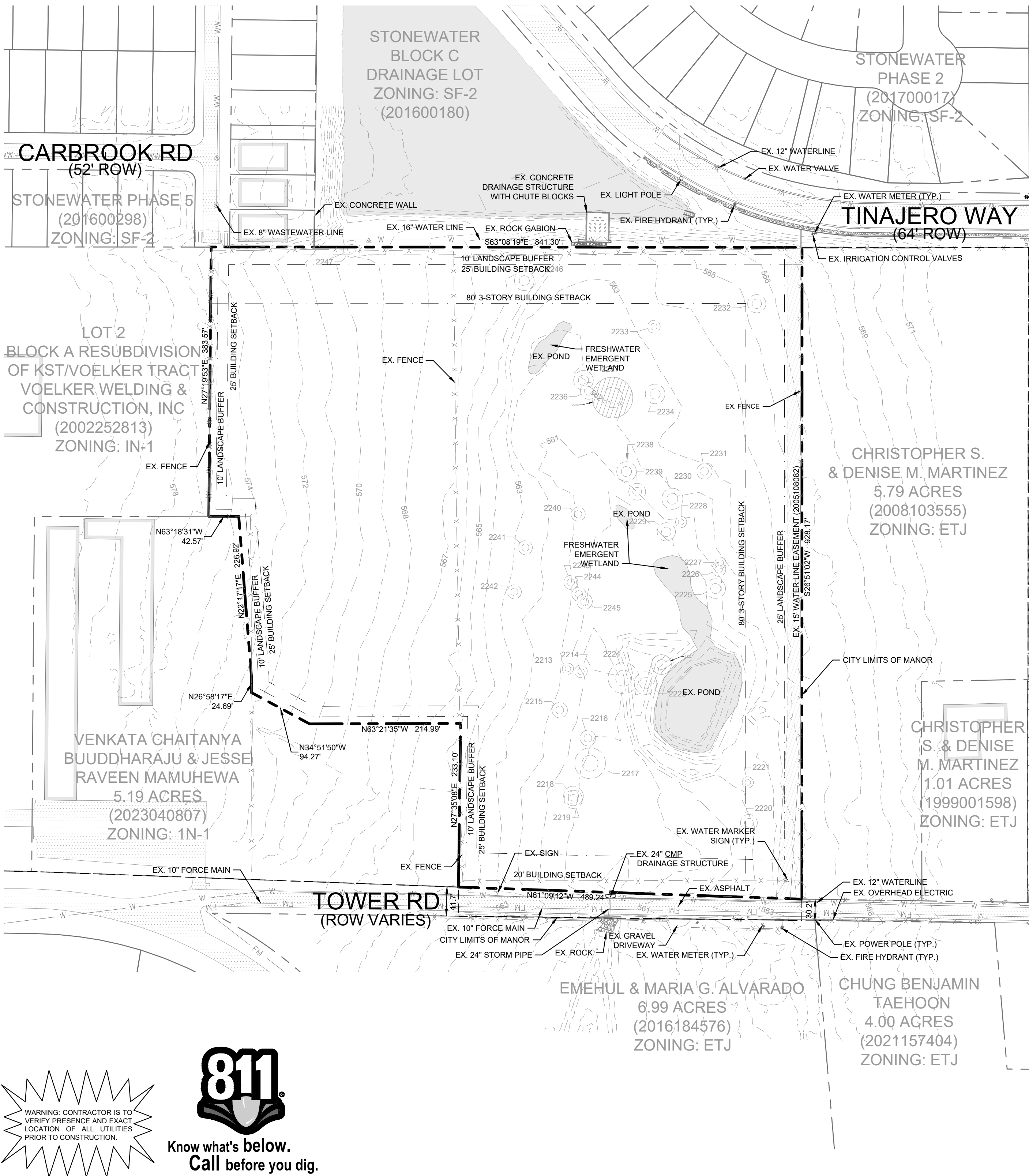


Plotted By: Henry, Dean Date: August 23, 2024 03:09:41pm File Path: K:\SAU\_Civil\069264311 - Dominion Manor\Cad\Preliminary\PlanSheets\NC - Existing Conditions and Demo Plan.dwg  
 This document, together with the concepts and designs presented herein, is intended only for the specific purpose and client for which it was prepared. Reuse of and improper reliance on this document without written authorization and adaptation by Kimley-Horn and Associates, Inc. shall be without liability to Kimley-Horn and Associates, Inc.



**LEGEND**

	PROPERTY LINE
	EXISTING OVERHEAD POWER LINE
	EXISTING WATER LINE
	EXISTING WASTEWATER LINE
	EXISTING STORM SEWER LINE
	EXISTING POWER POLE
	EXISTING FIRE HYDRANT
	EXISTING WATER VALVE
	EXISTING WATER METER
	EXISTING WASTEWATER MANHOLE
	EXISTING FENCE
	TREE TO REMAIN
	TREE TO BE REMOVED
	HERITAGE TREE

**NOTES:**

ALL TREE REPLACEMENT WILL BE HANDLED IN THE SITE DEVELOPMENT PLAN. DETAILED CALCULATIONS WILL BE PROVIDED BASED ON CITY OF MANOR STANDARDS TO COMPENSATE FOR INCHES REMOVED OF SIGNIFICANT TREES.

TREE TABLE			TREE TABLE		
No.	DESCRIPTION	STATUS	No.	DESCRIPTION	STATUS
2213	8" ELM	TO BE REMOVED	2231	11" ELM	TO BE REMOVED
2214	9" ELM	TO BE REMOVED	2232	13" ELM	TO BE REMOVED
2215	11" ELM	TO BE REMOVED	2233	9" ELM	TO BE REMOVED
2216	11" ELM	TO BE REMOVED	2234	14" ELM	TO BE REMOVED
2217	22" ELM	TO BE REMOVED	2235	29" ELM	TO REMAIN
2218	14" ELM	TO BE REMOVED	2236	12" ELM	TO BE REMOVED
2219	13" ELM	TO BE REMOVED	2237	14" ELM	TO BE REMOVED
2220	12" ELM	TO BE REMOVED	2238	14" ELM	TO BE REMOVED
2221	8" ELM	TO BE REMOVED	2239	12" ELM	TO BE REMOVED
2222	14" ELM	TO REMAIN	2240	10" ELM	TO BE REMOVED
2223	16" ELM	TO BE REMOVED	2241	10" ELM	TO BE REMOVED
2224	22" ELM	TO BE REMOVED	2242	10" ELM	TO BE REMOVED
2225	14" ELM	TO REMAIN	2243	10" ELM	TO BE REMOVED
2226	10" ELM	TO REMAIN	2244	10" ELM	TO BE REMOVED
2227	8" ELM	TO REMAIN	2245	11" ELM	TO BE REMOVED
2228	8" ELM	TO BE REMOVED	2246	14" ELM	TO BE REMOVED
2229	13" ELM	TO BE REMOVED	2247	12" ELM	TO BE REMOVED
2230	15" ELM	TO BE REMOVED			

**BENCHMARKS**

TBM 100:  
 MAG NAIL IN CONC. LOCATED ON THE NORTH SIDE OF A SIDEWALK ON THE NORTH SIDE OF TINAJERO WAY  
 N: 10109082.81'  
 E: 3182429.85'  
 ELEV: 576.15'

TBM 101:  
 MAG NAIL IN CONC LOCATED ON THE NORTH SIDE OF A SIDEWALK ON THE NORTH SIDE OF TINAJERO WAY  
 N: 10109962.14'  
 E: 3181826.19'  
 ELEV: 576.41'

**Kimley»Horn**  
 5301 SOUTHWEST PARKWAY, BUILDING 2, SUITE 100  
 Austin, Texas 78746  
 PHONE: 512-646-2237  
 WWW.KIMLEY-HORN.COM  
 © 2024 KIMLEY-HORN AND ASSOCIATES, INC.  
 TBP Firm No. 928

**Professional Engineer Seal:**  
 ANDREW B. GRAHAM  
 139295  
 LICENSED PROFESSIONAL ENGINEER

KHA PROJECT	069264311
DATE	August 24
SCALE:	AS SHOWN
DESIGNED BY:	ABG
DRAWN BY:	ARP
CHECKED BY:	BLG

**EXISTING CONDITIONS**

**VENTURA AT TOWER ROAD PRELIMINARY PLAN**

CITY OF MANOR  
 TRAVIS COUNTY, TEXAS

SHEET NUMBER  
**2 OF 6**

**811**  
 Know what's below.  
 Call before you dig.

WARNING: CONTRACTOR IS TO VERIFY PRESENCE AND EXACT LOCATION OF ALL UTILITIES PRIOR TO CONSTRUCTION.